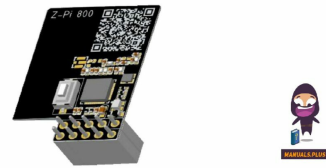


bonondar Z-Pi 800 Z-Wave Plus Static Controller



# bonondar Z-Pi 800 Z-Wave Plus Static Controller User Manual

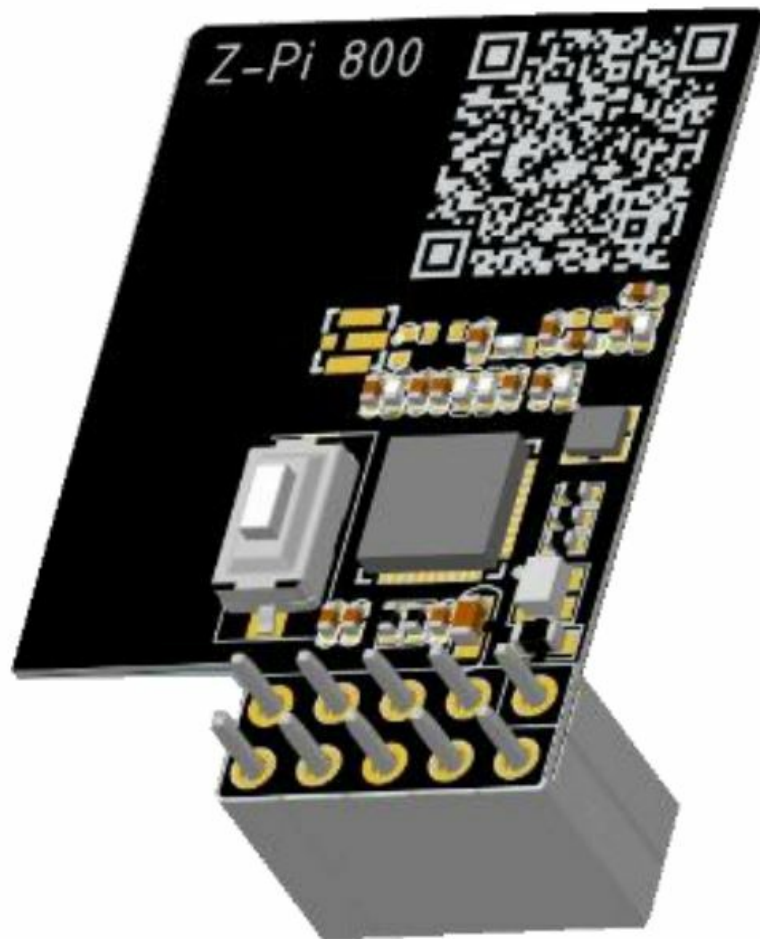
[Home](#) » [bonondar](#) » bonondar Z-Pi 800 Z-Wave Plus Static Controller User Manual 

## Contents

- 1 bonondar Z-Pi 800 Z-Wave Plus Static Controller
- 2 FEATURES
- 3 SPECIFICATIONS
- 4 SET UP
- 5 FACTORY RESET
- 6 Documents / Resources
  - 6.1 References

# bonondar

bonondar Z-Pi 800 Z-Wave Plus Static Controller



## FEATURES

- Z Wave Plus <sup>™</sup> Static Controller to easily add Z Wave <sup>™</sup> communication to your smart home ecosystem
- Latest S2 security protocol for a truly private network
- 800 Series Z Wave <sup>™</sup> Long Range for fast, low power direct communication (For US Long Range frequency ONLY)
- Extended range up to a mile in open space when using Long Range
- Designed for Raspberry Pi and Home Assistant Yellow hardware

## SPECIFICATIONS

- Model Number: Z PI V01
- Power: 3.3 VDC
- SDK: 7.18. 3
- Operating Temperature: 32 104 F
- Operating Humidity: Up to 85%
- Installation and Use: Indoor only
- Dimensions: 50.4 x 19 x 7.4 mm

## SET UP

Use this 800 Series Z Wave Plus <sup>™</sup> Pi Module as a wireless radio for your host controller, such as Raspberry Pi. Follow the detailed instructions in the link below to connect the module. Please proceed with caution when

installing the device.

Scan the code with your phone's camera and click on the link to access detailed installation instructions for the Z-Pi 800 module



Once the controller is set up and connected to your home automation software, you can enjoy a fully secure, private Z-Wave Plus™ mesh network. If the software supports Z-Wave™ Long Range, enable direct communication between your devices and the controller for a supreme range up to 1 mile and a larger network size up to 4000 nodes (For US Long Range frequency ONLY).

## **Z-PI GPIO MODULE AS SECONDARY CONTROLLER**

You can use the Pi module as a secondary controller to your current Z-Wave™ system if it accepts additional controllers. To enroll the module in your current system, send the inclusion command and put the module into learning mode using the SerialAPI mode in the interface

## **FACTORY RESET**

The Pi Module can only be reset by the host software while it's in SerialAPI mode. The device is reset once an appropriate command from the host software is sent to reset the Z-Wave™ network. There is no way to manually reset the module without a connection to the host software.

## **WARNING**


- This product should be installed indoors upon completion of any building renovations.
- Do not install the device in a place with direct sun exposure, high temperature, or humidity.
- Keep away from chemicals, water, and dust.
- Ensure the device is never close to any heat source or open flame to prevent fire.
- Ensure the device is connected to an electric power source that does not exceed the maximum load power.
- No part of the device may be replaced or repaired by the user

This product can be included and operated in any Z-Wave™ network with other Z-Wave™ certified devices from other manufacturers and/or other applications. All non- battery operated nodes within the network will act as repeaters regardless of vendor to increase the reliability of the network. This product features the latest Security 2 (S2) framework to remove smart home network hacking risks. This ae vice is equipped with a unique authentication code for trusted wireless communication.

## **WARRANTY**

This product is covered under a 12-month limited warranty.

## Documents / Resources

	<p><a href="#">bonondar Z-Pi 800 Z-Wave Plus Static Controller</a> [pdf] User Manual</p> <p>Z-Pi 800, Z-Pi 800 Z-Wave Plus Static Controller, Z-Wave Plus Static Controller, Static Controller, Controller</p>
---	--

## References

- [User Manual](#)

**Manuals+.** [Privacy Policy](#)

This website is an independent publication and is neither affiliated with nor endorsed by any of the trademark owners. The "Bluetooth®" word mark and logos are registered trademarks owned by Bluetooth SIG, Inc. The "Wi-Fi®" word mark and logos are registered trademarks owned by the Wi-Fi Alliance. Any use of these marks on this website does not imply any affiliation with or endorsement.