

 **BONDTECH**  
**EXT01LGX41012**  
**Round Stepper Motor**



# BONDTECH EXT01LGX41012 Round Stepper Motor User Manual

[Home](#) » [BONDTECH](#) » BONDTECH EXT01LGX41012 Round Stepper Motor User Manual 

## Contents

- [1 BONDTECH EXT01LGX41012 Round Stepper Motor](#)
- [2 Specifications](#)
- [3 Product Usage Instructions](#)
- [4 Reassembly Steps](#)
- [5 TAKE GOOD CARE OF IT](#)
- [6 FAQ](#)
- [7 Documents / Resources](#)
  - [7.1 References](#)



**BONDTECH EXT01LGX41012 Round Stepper Motor**



## Specifications

- **Product:** Bondtech Extruder Assembly
- **Material:** Various
- **Compatibility:** Compatible with specified models
- **Manufacturer:** Bondtech

## Product Usage Instructions

### Disassembly Steps

1. Undo the bottom screws with a 2 mm hex key and remove the interface plug.
2. Undo the top screws and remove the front plate.
3. Rotate the extruder 90 degrees counterclockwise and remove the middle section.

### Cleaning and Maintenance

Perform maintenance every 6 months or sooner based on usage:

1. Clean the double gear and drive gears with a toothbrush and alcohol.
2. Clean the needle bearings with a toothbrush and alcohol.
3. Lubricate the needle bearings with a fine brush and lubricant.
4. Blow housing plastic parts with compressed air to remove dust and dirt particles.

### Reassembly Steps

### How to Get Help

If you have any questions or issues, visit our website for customer support: [Bondtech Customer Support](#)

## INSTRUCTIONS

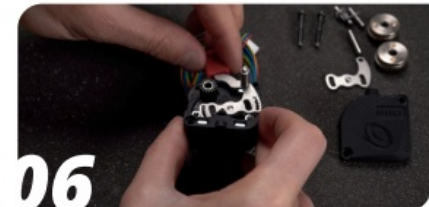
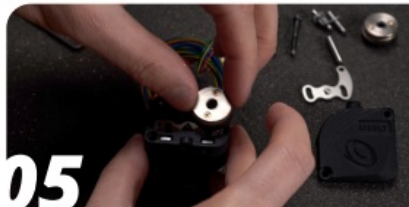
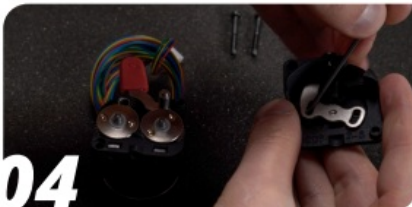
This guide is designed to be a reference manual for how to do maintenance on the LGX® Lite PRO. Follow the instructions below or, if you prefer to watch a YouTube video with the same instructions, use the provided link below or the YouTube icon to the right: <https://youtu.be/nhHWQQKScbc>



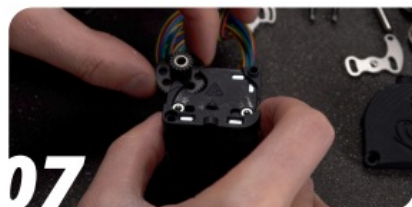
1. Undo the bottom screws with a 2 mm hex key and remove the interface plug.
2. Undo the top screws and remove the front plate.
3. Rotate the extruder 90 degrees counterclockwise and remove the middle section.



4. Remove the drive gears, plastic washers, and pins.
5. Remove the extruder assembly from the motor.
6. Remove the lever, double gear, and spring from the back SLS piece.



7. Lift the needle bearings out with your 2 mm hex key.
8. Place the double gear, drive gears, and needle bearings in a small container and fill up with IPA.
9. Let the parts soak for about 10 minutes.



10. Wipe off excess grease and solvent from the stepper motor. Brush the rest away.
11. Wipe off excess grease and solvent from the double gear. Brush the rest away.
12. Wipe off excess grease and solvent from the stepper motor. Brush the rest away.



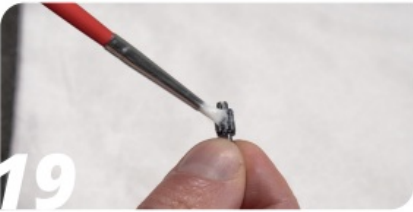
13. Wipe off excess grease and solvent from the needle bearings. Be careful to not lose needles.
14. Apply a generous amount of grease to the motor gear.
15. Next, place the needle bearings on the drive gear pins and apply grease.



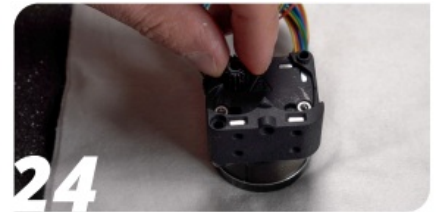
16. Insert the pins with needle bearings in the drive gears.
17. Apply a generous amount of grease to the drive gears. Avoid the filament teeth.
18. Apply grease to the inside of the double gear.



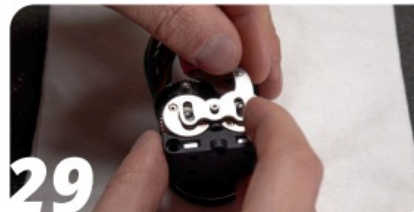
19. Gather all components for reassembly.
20. Insert the spring from the front of the SLS part. Shown here is the placement in the back.
21. Add the double gear behind the spring.



22. Push the double-gear pin into the double gear.
23. Add the right drive gear pin.
24. Add the lever to the drive gear pin.



25. Seat the spring onto the lever.
26. Add the drive gear washers, drive gears, and pins.
27. Spin the gears to spread the grease around and make sure nothing is binding.



28. Add some more grease to the double gear as you see fit.



29. Push the lever to the left.
30. Add the middle SLS part.



31. Place the assembly on the motor.

## TAKE GOOD CARE OF IT

Every 6 months, or sooner if you have a higher than 15h per week average usage, perform the following maintenance operations:

1. With a toothbrush and alcohol:
  1. **a.** Clean the double gear and the drive gears
  2. **b.** Clean the needle bearings
2. With a fine brush and lubricant
  1. **a.** Lubricate the needle bearings
3. With compressed air
  1. **a.** Blow the housing plastic parts to remove dust and dirt particles

## HOW TO GET HELP

We are available to help you with any questions or issues you may have. Simply go to our website where you can access our customer support and send us your questions or follow the provided link:

[https://www.bondtech.se/contact/#tab\\_technical-support-requests](https://www.bondtech.se/contact/#tab_technical-support-requests)  
[www.bondtech.se](https://www.bondtech.se)

## FAQ



- **Q: How often should I perform maintenance on the Bondtech Extruder Assembly?**
  - A: Maintenance should be performed every 6 months or sooner if usage exceeds 15 hours per week on average.
- **Q: Can I use any lubricant for the needle bearings?**
  - A: It is recommended to use the specified lubricant for the needle bearings to ensure optimal performance.

## Documents / Resources



[BONDTECH EXT01LGX41012 Round Stepper Motor](#) [pdf] User Manual  
EXT01LGX41012 Round Stepper Motor, EXT01LGX41012, Round Stepper Motor, Stepper Mot  
or

## References

-  [Bondtech Dual Drive Extruders and Extrusion Upgrade Kits](#)
-  [Contact Bondtech for support or to send us a message](#)
- [User Manual](#)

[Manuals+](#), [Privacy Policy](#)

This website is an independent publication and is neither affiliated with nor endorsed by any of the trademark owners. The "Bluetooth®" word mark and logos are registered trademarks owned by Bluetooth SIG, Inc. The "Wi-Fi®" word mark and logos are registered trademarks owned by the Wi-Fi Alliance. Any use of these marks on this website does not imply any affiliation with or endorsement.