

bomaker dB-80W Channel Soundbar User Manual

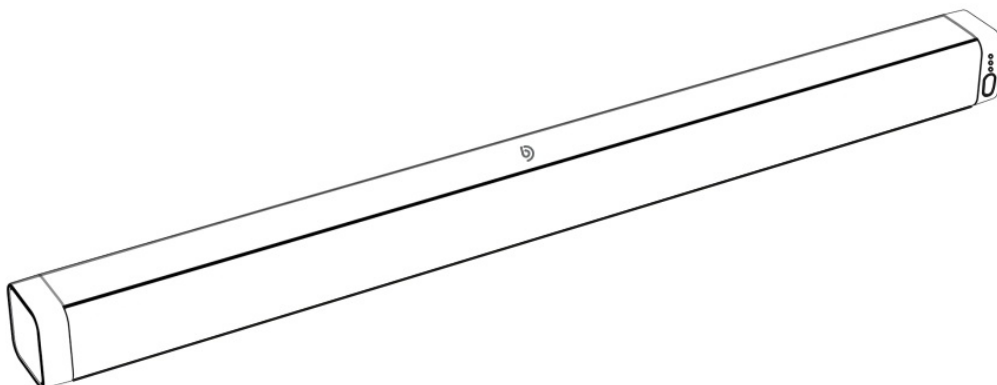
[Home](#) » [bomaker](#) » bomaker dB-80W Channel Soundbar User Manual 

Contents

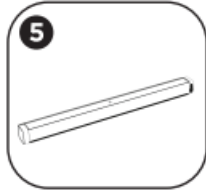
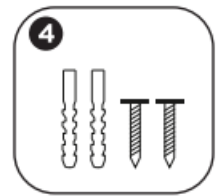
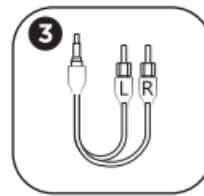
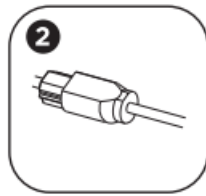
- [1 bomaker dB-80W Channel Soundbar](#)
- [2 BOX CONTENT](#)
- [3 DIAGRAM \(BUTTONS, PORTS & INDICATOR\)](#)
- [4 USING YOUR SOUNDBAR](#)
- [5 SPECIFICATION:](#)
- [6 Safety Instructions](#)
- [7 FCC Regulatory Compliance](#)
- [8 RF Exposure Compliance](#)
- [9 Correct Disposal of This Product](#)
- [10 Documents / Resources](#)
 - [10.1 References](#)
- [11 Related Posts](#)



bomaker dB-80W Channel Soundbar



BOX CONTENT



2.0 CH Soundbar



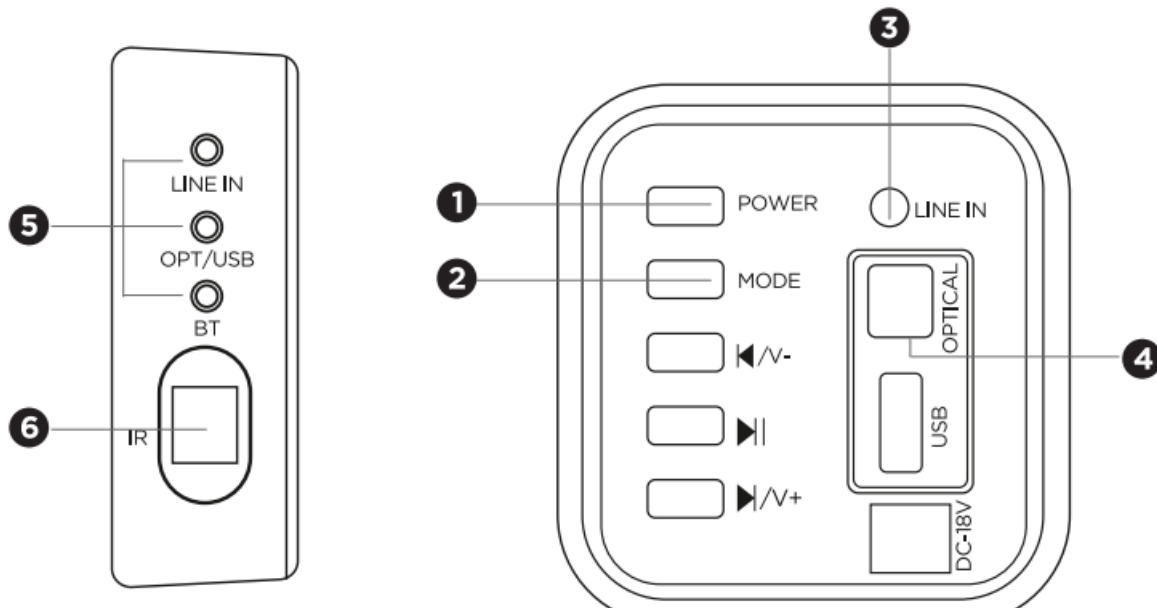
Remote Control



User Manual

1. Power Adapter
2. Optical Cable
3. 3.5mm to RCA Audio Cable
4. Wall Mounting Bolts

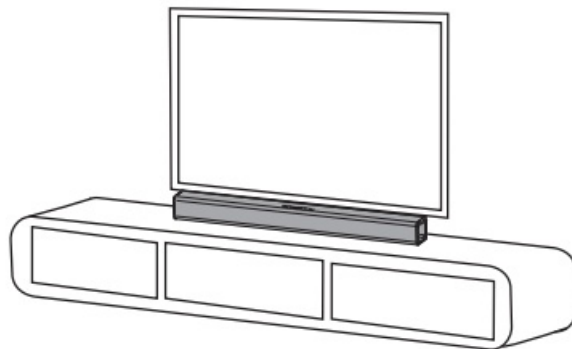
DIAGRAM (BUTTONS, PORTS & INDICATOR)



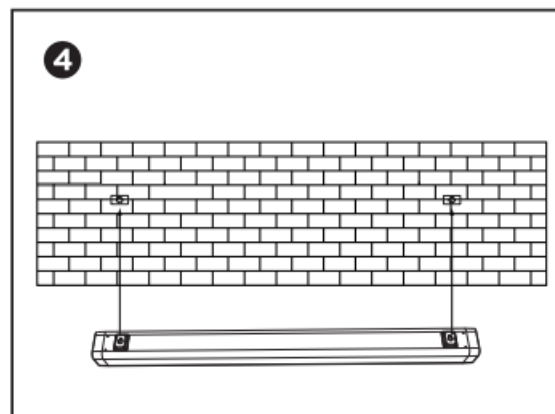
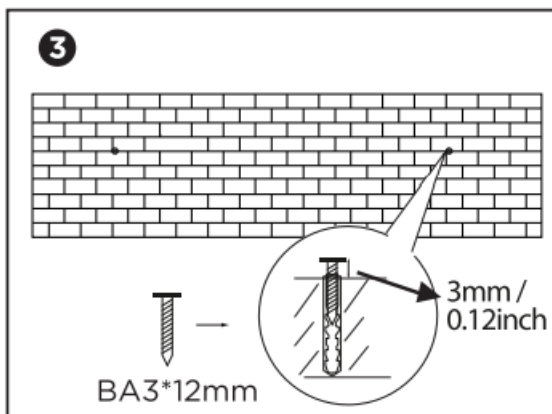
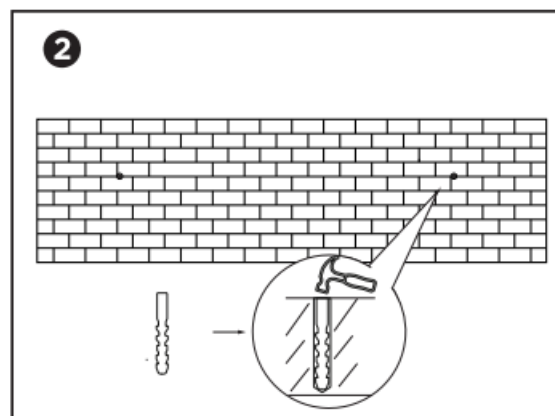
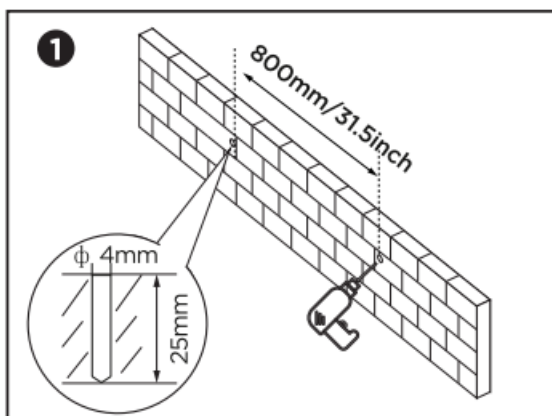
1. Press 0.5 second to switch on, hold for 3 seconds to turn off.
2. Press “Mode” button to switch between Bluetooth, Aux, Optical and USB mode.
3. 3.5mm Audio Input.
4. Optical Input.
5. When connected to Aux Input, the light turns “Red”, when switched to USB/Opt Mode, the light turns “Blue”.
Flashing blue means it’s in Bluetooth Pairing mode. Once paired, the blue light will turn solid blue and the voice prompt will be heard.
6. Infrared Receiving Area.

Placement

- Table placement
- Place the soundbar on a solid surface.

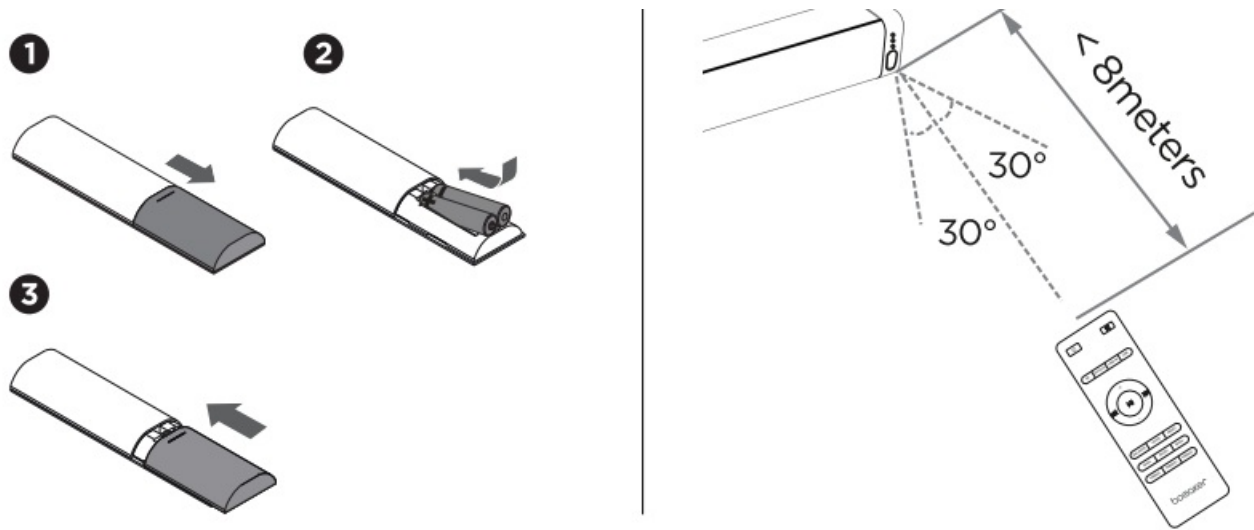


Wall Mounting Installation



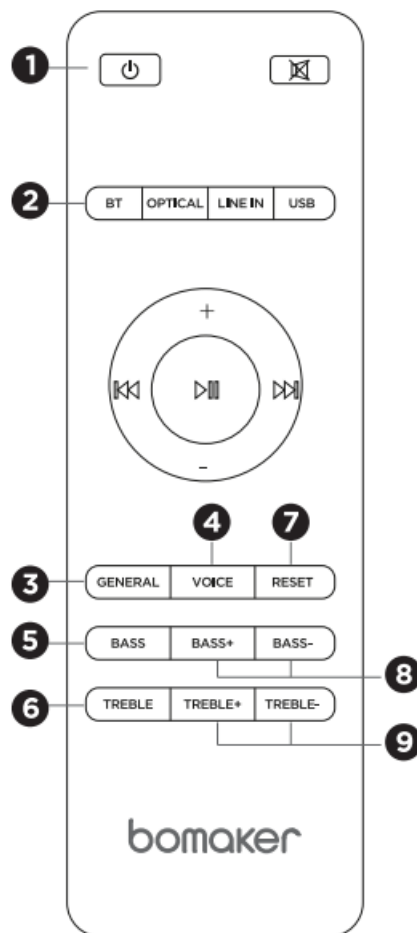
REMOTE CONTROL

Battery installation



Use remote control

The working range of remote is $\pm 30^\circ$ in both Vertical and Horizontal Direction.



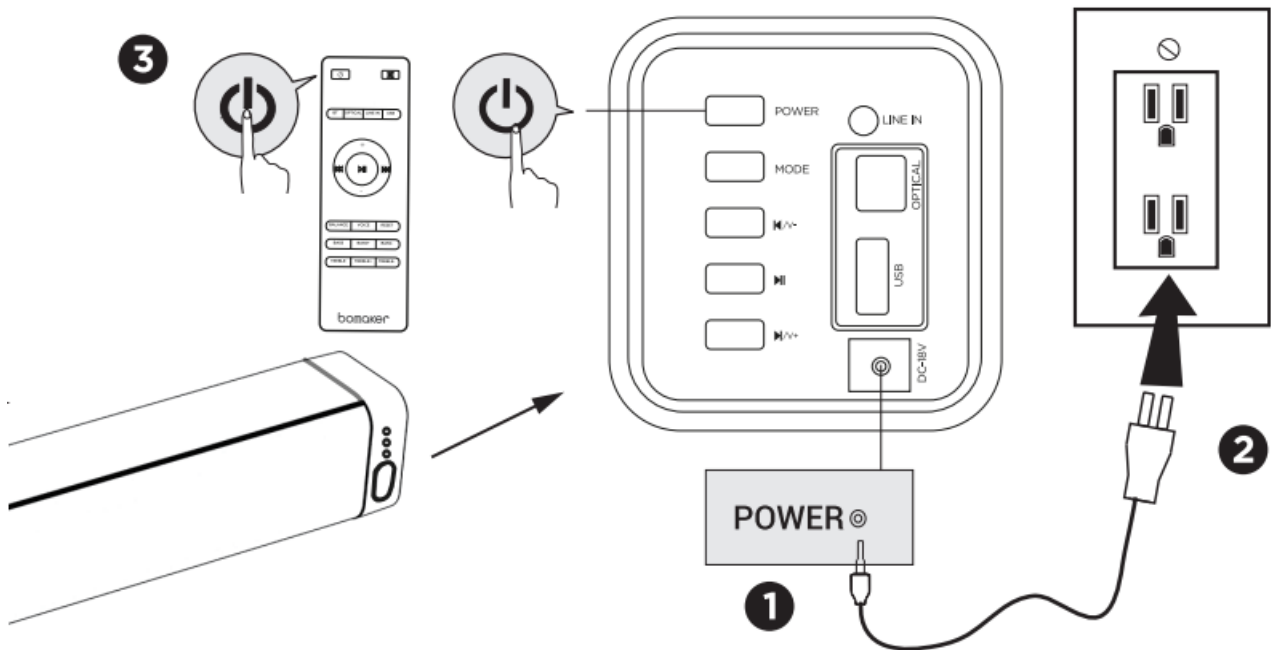
1. Press "Power on/off" for 1s to switch on, hold for 5s to turn off.
2. **Select inputs:** Bluetooth, Optical, Aux and USB.
Choose EQ Modes (Short press to switch between different EQ settings) : 3-6
3. **General:** The Equalizer in Dialogue. Bass and Treble.
4. **Voice:** For movies, TV shows and News to hear dialogues clearly.
5. **Bass:** Emphasis on Bass for movies and music.
6. **Treble:** Adjust treble for the best sound.
7. **Reset:** Press "Reset" button to clear all input, volume and EQ mode settings from the system and return to

original factory settings.

8. **Adjust Bass Volume:** The bass will increase or decrease 1dB by pressing “BASS+” or “BASS -” each time.
9. **Adjust Treble Volume:** The treble will increase or decrease 1dB by pressing “TREBLE +” or “TREBLE -” each time.

USING YOUR SOUNDBAR

Turn On / Off

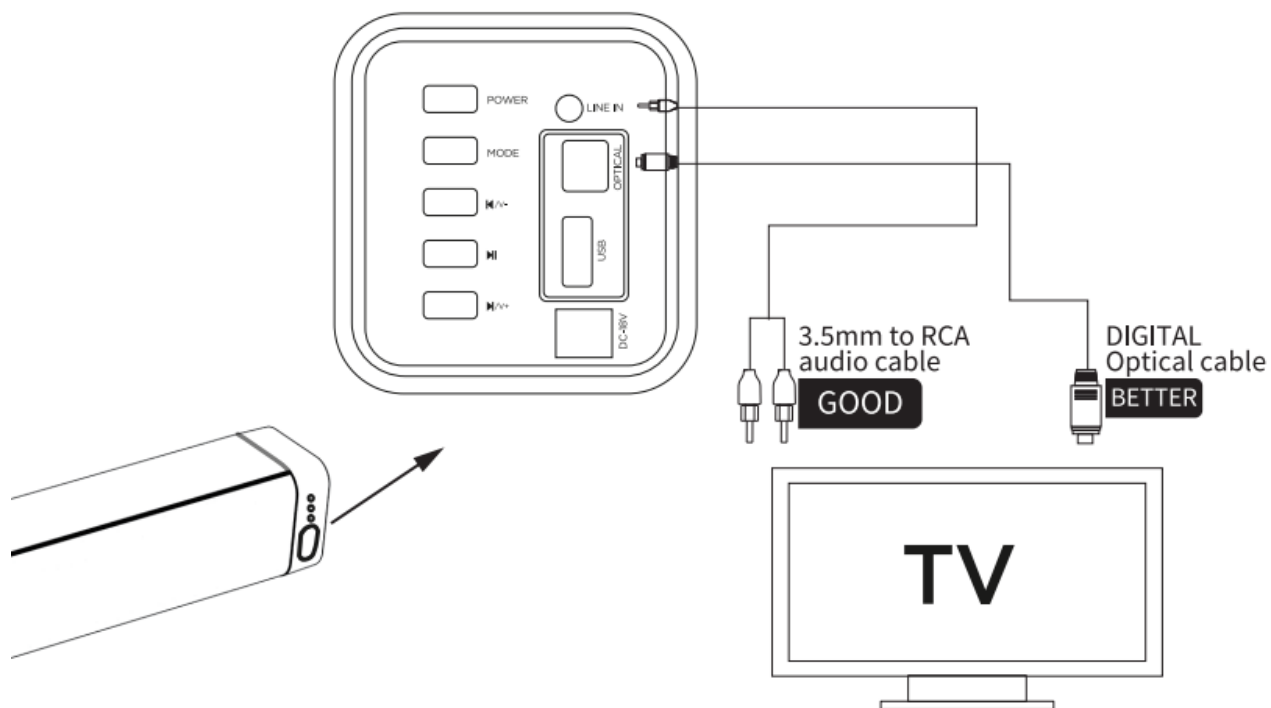


• Connect to your TV

Use Remote Control or Side Buttons of Soundbar to change modes.

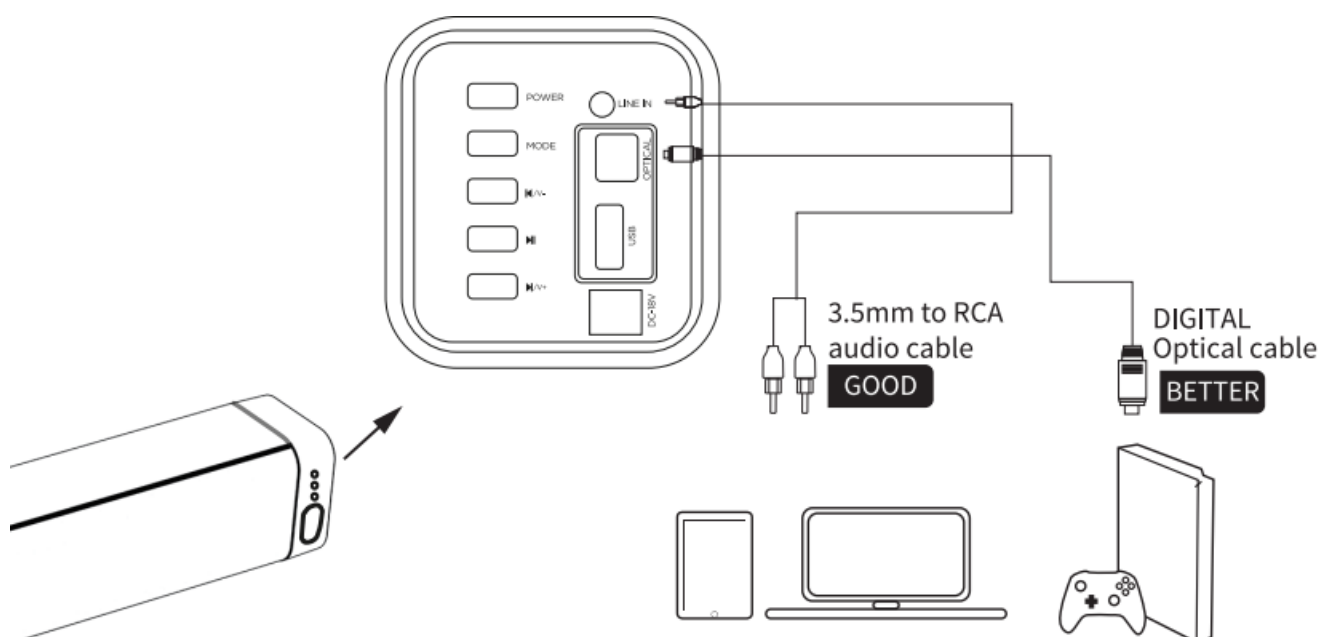
Note:

1. Prior to usage, check if your TV has Optical and Aux Output.
2. The soundbar doesn't have coaxial and hdmi Inputs.
3. Turn on PCM settings of your tv when connected in Optical Mode In case it doesn't have sound.
4. 32 is the maximum volume of the soundbar.



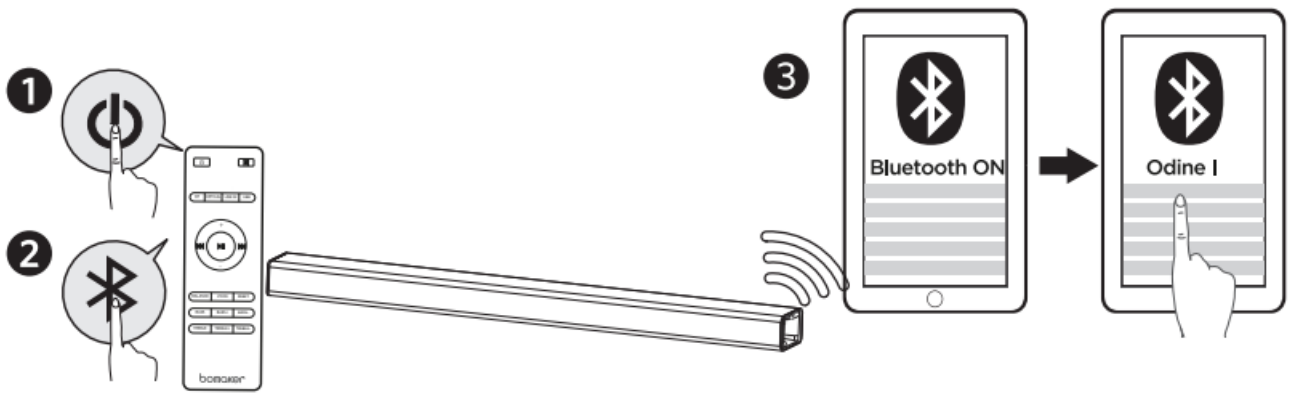
- **Connect to other devices**

Need to purchase one 3.5mm Audio Cable if your tv has 1 male audio output, the included RCA cable is 1 male to 2 male, will not fit.



- **Bluetooth mode**

To enter Bluetooth Mode, use remote or side buttons on the soundbar, it shows flashing "Blue" light when connected



SPECIFICATION:

- **Input:** DC18V / 2A
- **Speaker Driver:** 2.25" *4PCS
- **Net Weight:** 2000g /4.4Lb
- **Size:** L940*D85*H74mm / 3.7*3.35*2.91 in
- **Audio Output:** 60W Max.
- **Range:** 10m / 33ft.
- **Bluetooth Version:** V4.2

Safety Instructions

1. Avoid dropping
2. Do not disassemble
3. Avoid extreme temperatures
4. Don't use the device outdoors during thunderstorms
5. Use original or certified cables
6. Don't use any corrosive cleaner / oil to clean
7. The products should not be exposed to dripping or splashing water

FCC Regulatory Compliance

- **Note:** This equipment has been tested and found to comply with the limits for a Class B digital device, pursuant to Part 15 of the FCC Rules. These limits are designed to provide reasonable protection against harmful interference in a residential installation. This equipment generates, uses and can radiate radio frequency energy and, if not installed and used in accordance with the instructions, may cause harmful interference to radio communications. However, there is no guarantee that interference will not occur in a particular installation.
- If this equipment does cause harmful interference to radio or television reception, which can be determined by turning the equipment off and on, the user is encouraged to try to correct the interference by one or more of the following measures:
 - Reorient or relocate the receiving antenna.
 - Increase the separation between the equipment and receiver.
 - Connect the equipment into an outlet on a circuit different from that to which the receiver is connected.

- Consult the dealer or an experienced radio/TV technician for help.
- **Warning:** changes or modifications not expressly approved by the party responsible for compliance could void the user's authority to operate the equipment.

RF Exposure Compliance

This equipment complies with FCC radiation exposure limits set forth for an uncontrolled environment. This equipment should be installed and operated with minimum distance 20cm between the radiator and your body. This transmitter must not be co-located or operating in conjunction with any other antenna or transmitter.

FCC Compliance Statement

This device complies with Part 15 of the FCC Rules. Operation is subject to the following two conditions:

1. This device may not cause harmful interference, and
2. this device must accept any interference received, including interference that may cause undesired operation.

Supplier's Declaration of Conformity


- 47 CFR § 2.1077 Compliance Information
- Unique Identifier Trade Name: Bomaker, Model No.: Odine I
- Responsible Party – U.S. Contact Information
- Substanbo Inc.
- 381 Elliot St. Suite 110L Newton, Upper Falls, MA 02464 USA
- Tel: +1(617)309-0528
- Model No. Of the Adapter: CW1802330RE
- MFG. Of the Adapter: Shenzhen Cenwell Technology Co., Ltd

Correct Disposal of This Product

Waste Electrical& Electronic Equipment

- This mark shown on the product or its packaging, indicates that this product should not be disposed with other household wastes at the end of its working life.
- To prevent possible harm to the environment or human health from uncontrolled waste disposal, please separate this from other types of wastes and recycle it responsibly to promote the sustainable reuse of material resources.
- Household user should contact either the retailer where they purchased this product, or their local government office, for details of where and how they can take this item for environmentally safe recycling.
- Business users should contact their supplier and check the terms and conditions of the purchase contract. This product should not be mixed with other commercial wastes for disposal.
- **Caution:** A warning that batteries of the remote control, shall not be exposed to excessive heat such as sunshine, fire or the like.

Documents / Resources

	bomoker dB-80W Channel Soundbar [pdf] User Manual dB-80W Channel Soundbar, dB-80W, Channel Soundbar, Soundbar
---	--

References

- [User Manual](#)