



bomaker Njord II 2.1 Channel Soundbar with Active Subwoofer User Manual

[Home](#) » [bomaker](#) » bomaker Njord II 2.1 Channel Soundbar with Active Subwoofer User Manual 

bomaker

Contents

1 USER MANUAL

1.1 Njord II

1.2 ACCESSORIES:

1.3 DIAGRAM (BUTTONS, PORTS & INDICATOR)

1.4 MODE

1.5 PLACEMENT

1.6 Remote Control

1.7 USING YOUR SOUNDBAR

1.8 USING YOUR SUBWOOFER:

1.9 SPECIFICATION:

1.10 Declaration of Conformity

2 Documents / Resources

3 Related Posts

USER MANUAL

Njord II

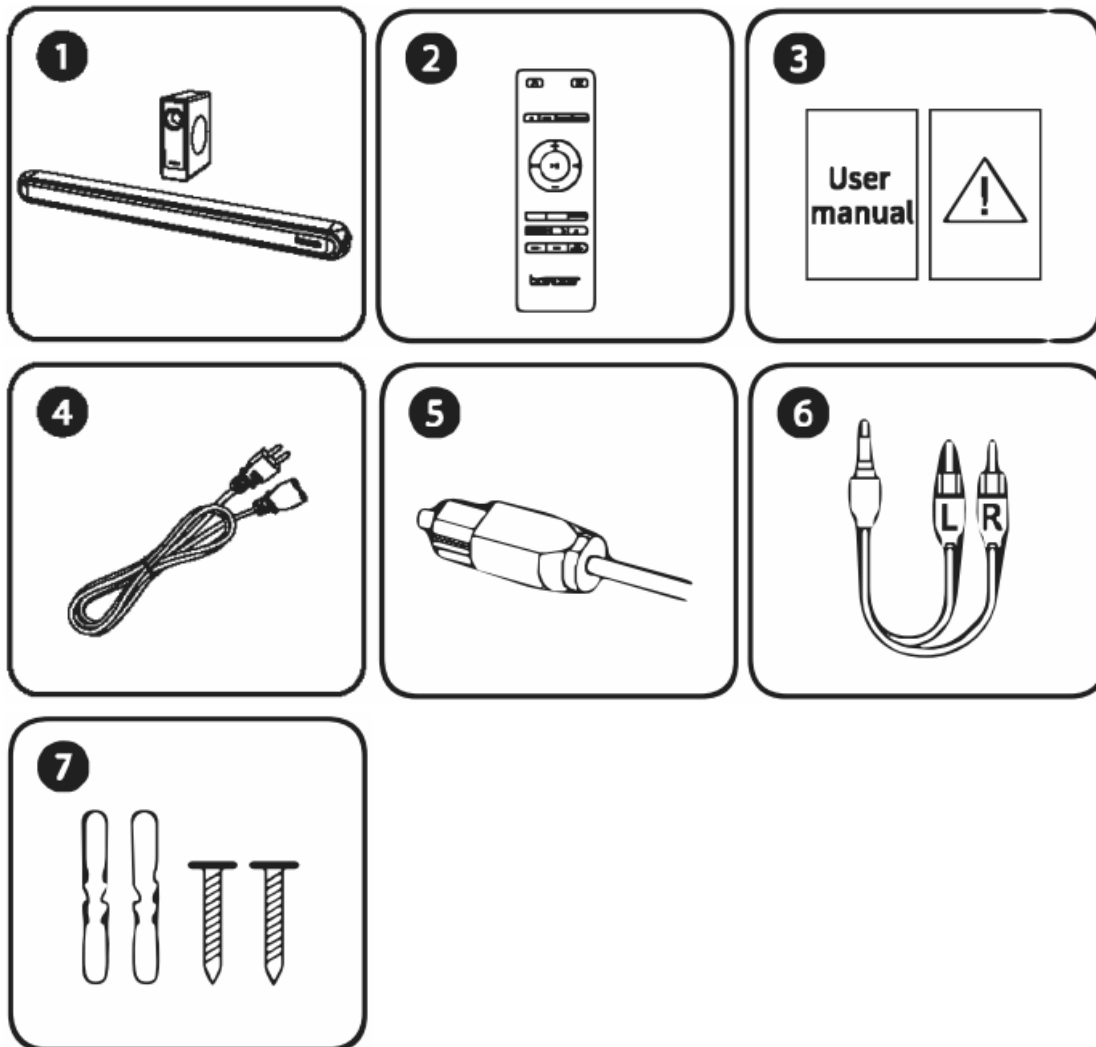
2.1 Channel Soundbar with Active Subwoofer



www.bomaker.com

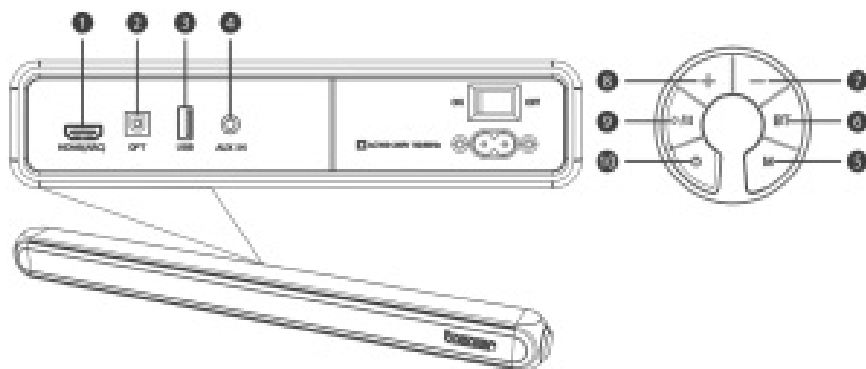
Thanks for purchasing Bomaker Njortd II. This guideline aims to offer you details on setting up this soundbar so that you can enjoy the ultimate sound experience.

ACCESSORIES:



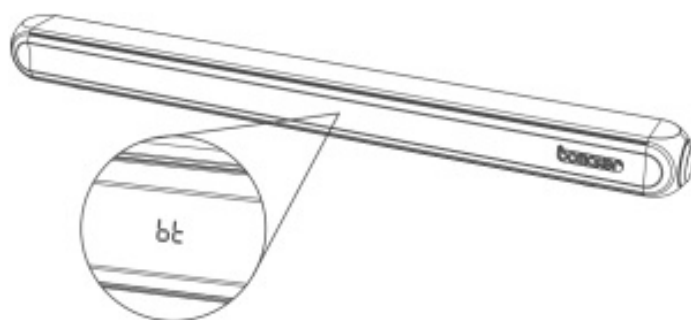
- 4 Power cable
- 5 Optical cable
- 6 AUX audio cable
- 7 Wall mounting bolts

DIAGRAM (BUTTONS, PORTS & INDICATOR)



- 1 HDMI(ARC):** Connect to compatible devices via a HDMI cable (not provided).
- 2 OPTICAL IN:** Connect to compatible devices via an optical cable (provided).
- 3 USB IN:** MP3/WAV playback (Driver FAT32 format and 64GB max).
- 4 AUX IN:** Connect to the compatible devices via the 3.5mm-RCA stereo jack cable(provided)
- 5 M:** Press to switch modes: HDMI(ARC)-Bluetooth-Optical-AUX-USB.
- 6 BT:** Press to switch BT Pairing Mode, hold for 3S to disconnect, and go to pairing mode.
- 7 – :** Short press the volume -1, long press the volume to decrease quickly.
- 8 +:** Short press the volume +1, long press the volume to increase quickly.
- 9 ►/||:** Play/Pause.
- 10 ⏻ :** Short press to turn on, long press to turn off.

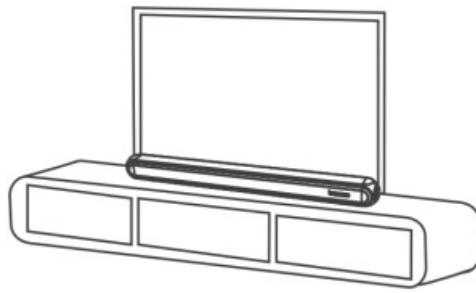
MODE



ARC	HDMI(ARC)mode	bt	Bluetooth mode
USB	USB media mode	AUX	Auxiliary input mode
OPT	Optical mode	HF	Hi-Fi mode
OC	DYNAMIC mode		

PLACEMENT

A. Table Placement

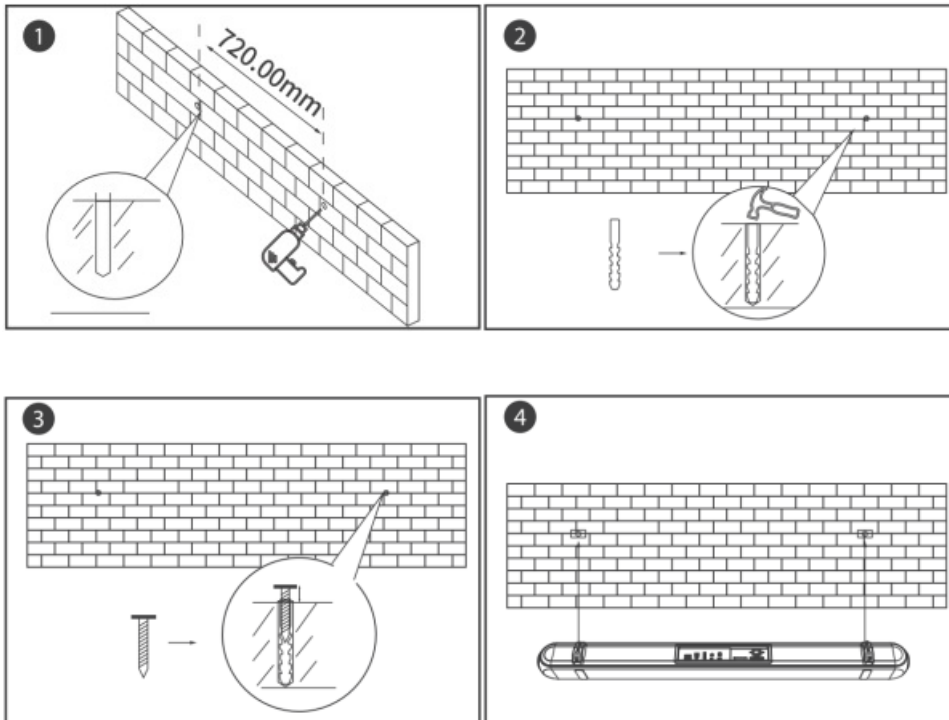


Placement

Table placement

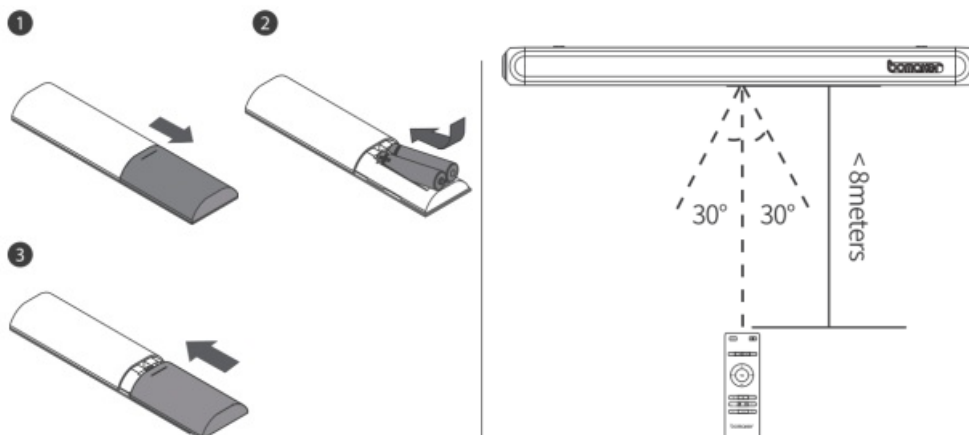
Place the soundbar on a solid surface.

B: Wall Mounted



Remote Control



Battery installation



Use remote control

The working range of remote is +/-30° in both Vertical and Horizontal Direction.

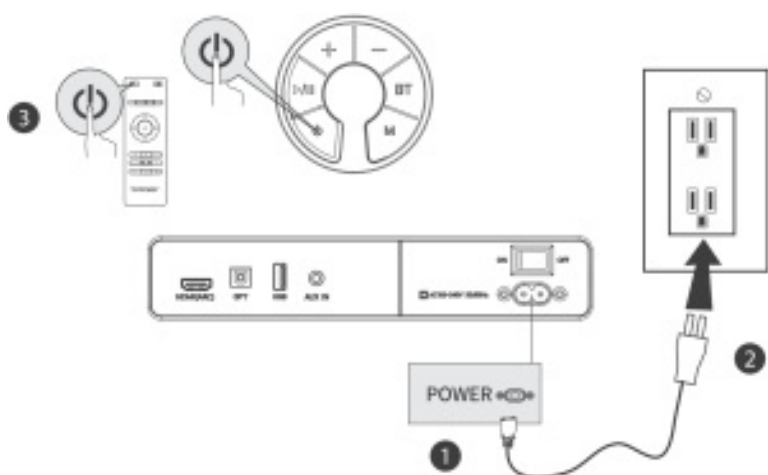


	Short press to turn on, long press to turn off	MUSIC	Music Mode/EQ 1
	Mute/ Recover the Volume	MOVIE	Movie Mode/EQ 2
BT	Go to BT Mode	NEWS/Game	News mode is displayed as EQ3/ Game mode is displayed as EQ4
HDMI	Go to HDMI Mode	OPTICAL	Go to Optical Mode
DYNAMIC	To enhance the dynamic effects of different EQ modes such as Music/Movie/News/Games/3D, suitable for scenes of needing more powerful sound effects.		
Hi-Fi	To adjust the sound effects on different EQ Modes such as Music/Movie/News/Games/3D to get clearer sound, suitable for some quiet scenes such as dialogue.		

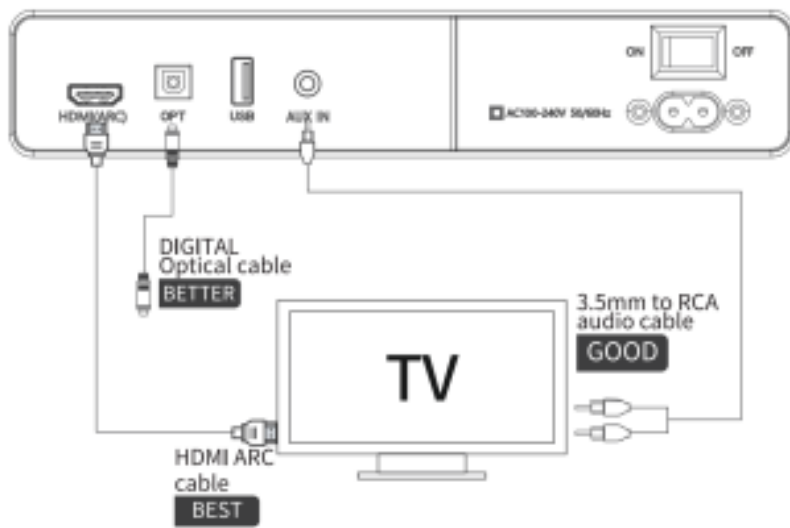
AUX/USB	Go to Aux/USB Mode	BASS+	Increase the Bass
+	Volume Up	BASS-	Decrease the Bass
—	Volume Down	3D	3D Surround sound on/off, can only be turned on in movie mode
⏮	Previous Track	⏭	Next Track
⏸	Play/Pause	↺/LED OFF	Short press button for Single loop or Full loop in USB mode / Long press to turn on/off the LED indicator

USING YOUR SOUNDBAR

A. Connect to Power



B. Connect to TV

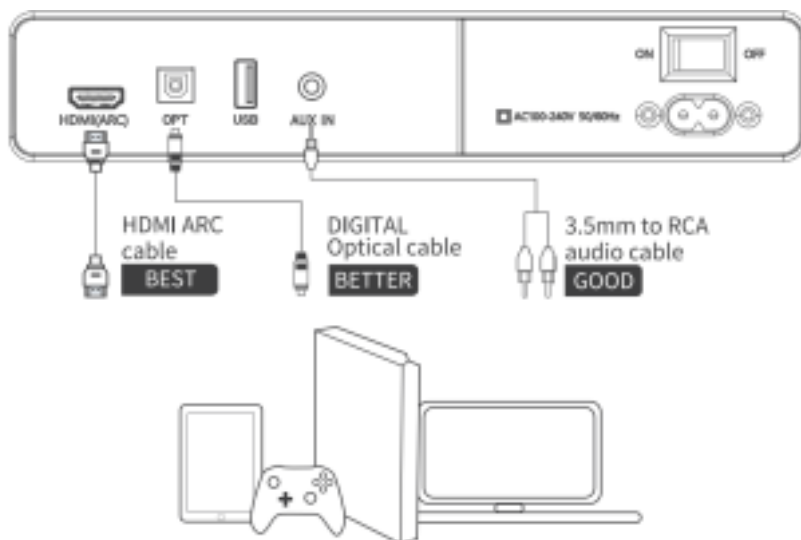


Use Remote Control or Button on Soundbar to change modes.

Note:

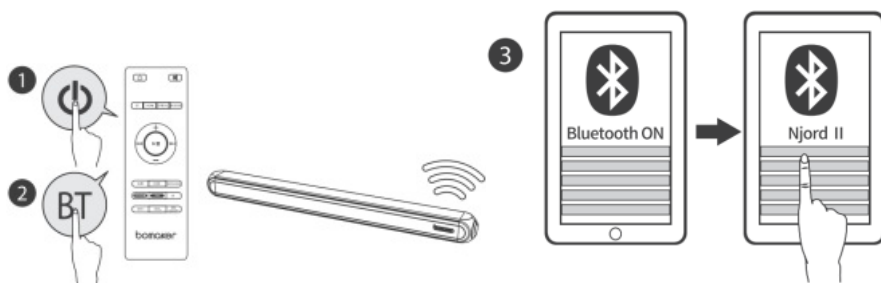
1. Prior to usage, check whether your TV has HDMI ARC, Optical and Aux Output.
2. Prior to using HDMI ARC connection, please ensure your TV supports HDMI ARC and HDMI Cable is not lower than HDMI 1.4.
3. Adjust the TV to PCM audio output format, when your TV is playing non-Dolby video; otherwise, adjust it back to original audio format, when playing Dolby Digital video.
4. 32 is the maximum volume of the soundbar.



C. Connect to Other Device



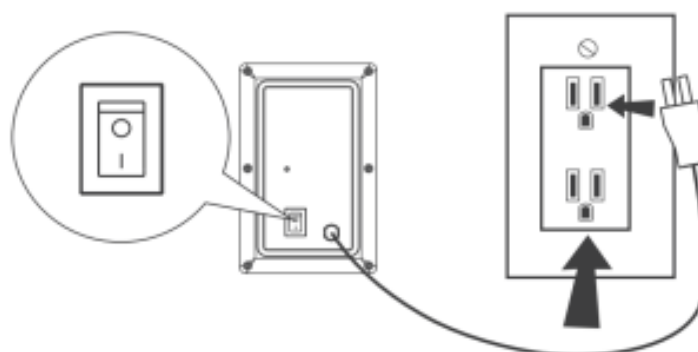
Need to purchase one 3.5mm -3.5mm audio cable if there is only 3.5mm female output on your Devices.

D. Connect to Bluetooth Device



Short press “BT” button on the remote control or on the soundbar to enter Bluetooth mode. The BT  will flash when entering the pairing mode, and  will stop flashing once successfully paired

USING YOUR SUBWOOFER:



Pair LED indicator: Solid red LED means the subwoofer is connected to sound bar successfully.

SPECIFICATION:

Model: Njord II	Sound Channel: 2.1
Driver: 2.25"x4 Driver+6.5"x1 Subwoofer	Distortion: <0.5%
Functional Jacks: Optical x 1,HDMI ARCx1,USBx1,AUXx1	Peak Power: 240W
Product Dimension: Soundbar L935 x D92 x H65mm, Subwoofer L145 x D425 x H305mm	BT Version: 5.0
Power Supply: AC100-240V 50/60Hz	Product Weight: 6.5Kg



Manufactured under license from Dolby Laboratories, Dolby, Dolby Audio, and the double-D symbol are trademarks of Dolby Laboratories.

Safety Instructions

1. Avoid dropping
2. Do not disassemble
3. Avoid extreme temperatures
4. Don't use the device outdoors during thunderstorms
5. Use original or certified cables

6. Don't use any corrosive cleaner/ oil to clean
7. The products should not be exposed to dripping or splashing water

FCC Regulatory Compliance

Note: This equipment has been tested and found to comply with the limits for a Class B digital device, pursuant to Part 15 of the FCC Rules. These limits are designed to provide reasonable protection against harmful interference in a residential installation. This equipment generates, uses and can radiate radio frequency energy and, if not installed and used in accordance with the instructions, may cause harmful interference to radio communications. However, there is no guarantee that interference will not occur in a particular installation.

If this equipment does cause harmful interference to radio or television reception, which can be determined by turning the equipment off and on, the user is encouraged to try to correct the interference by one or more of the following measures:

- Reorient or relocate the receiving antenna.
- Increase the separation between the equipment and receiver.
- Connect the equipment into an outlet on a circuit different from that to which the receiver is connected.
- Consult the dealer or an experienced radio/TV technician for help.

Warning: changes or modifications not expressly approved by the party responsible for compliance could void the user's authority to operate the equipment.

RF Exposure Compliance

This equipment complies with FCC radiation exposure limits set forth for an uncontrolled environment. This equipment should be installed and operated with minimum distance 20cm between the radiator and your body. This transmitter must not be co-located or operating in conjunction with any other antenna or transmitter.

FCC Compliance Statement

This device complies with Part 15 of the FCC Rules. Operation is subject to the following two conditions: (1) This device may not cause harmful interference, and (2) this device must accept any interference received, including interference that may cause undesired operation.

ISED WARNINGS

This device contains licence-exempt transmitter(s)/receiver(s) that comply with Innovation, Science and Economic Development Canada's licence-exempt RSS(s). Operation is subject to the following two conditions:

- (1) This device may not cause interference.
- (2) This device must accept any interference, including interference that may cause undesired operation of the device.

The device meets the exemption from the routine evaluation limits in section 2.5 of RSS 102 and compliance with RSS-102 RF exposure, users can obtain Canadian information on RF exposure and compliance.

This transmitter must not be co-located or operating in conjunction with any other antenna or transmitter. This equipment should be installed and operated with a minimum distance of 20 centimeters between the radiator and your body.

Supplier's Declaration of Conformity

47 CFR § 2.1077 Compliance Information

Unique Identifier Trade Name: Bomaker, Model No.: Njord II

Responsible Party — U.S. Contact Information

Substanbo Inc.

381 Elliot St. Suite 110L Newton, Upper Falls, MA 02464 USA

Tel: +1(719)309-2056

Correct Disposal of This Product



(Waste Electrical & Electronic Equipment)

This mark shown on the product or its packaging, indicates that this product should not be disposed with other household waste at the end of its working life. To prevent possible harm to the environment or human health from uncontrolled waste disposal, please separate this from other types of wastes and recycle it responsibly to promote the sustainable reuse of material resources.

Household user should contact either the retailer where they purchased this product, or their local government office, for details of where and how they can take this item for environmentally safe recycling.

Business users should contact their supplier and check the terms and conditions of the purchase contract. This product should not be mixed with other commercial wastes for disposal.

Declaration of Conformity

We (Manufacturer is responsible for this declaration)

Guang Dong Substanbo Technology Co , Ltd
(Company name)

Room 2508, Bd.4, Tianan yungu 2nd Industrial Park, Longgang District Shenzhen,China
(Company address)

declare under our sole responsibility that the product

Trade name: Bomaker

Equipment: 2.1 Soundbar system

Model No. : Njord II

to which this declaration relates is in conformity with the essential requirement set out in the Council Directive on the Approximation of the laws of the Member States relating to RED Directive(2014/53/EU) & RoHS(2011/65/EU) product is responsible to affix CE marking, the following standards were applied:

EN 62479:2010

EN 62368-1:2014+A11:2017

EN 55032:2015

EN 61000-3-2:2014

EN 61000-3-3:2013

EN 55035:2017

ETSI EN 301 489-1 V2.2.3(2019-11)

Draft ETSI EN 301 489-17 V3.2.0(2017-03)

EN 300 328 V2.2.1(2016-11)

IEC62321-3-1:2013

IEC62321-4:2013

IEC62321-5:2013

IEC62321-6:2015

IEC62321-7-1:2015

IEC62321-7-2:2017

IEC62321-8:2017

Full Name: Lion Liao Position: Approbation Manager

Signature:  Place/Date: Shenzhen,China/Feb.19-2021

bomaker

EU Representative: E2euro Consulting Hungary
Address: Hoferstasse 9B, 71636 Ludwigsburg, Germany
UK Representative: Substanbo Innovations Technology Limited
Address: 105, 11 Courtenay Road, East Lane East Lane
Wembley United Kingdom HA9 7ND
US Representative: Substanbo Inc.
Address: 36 South 18th Avenue, Suite A, Brighton, CO, USA 80601
Manufacturer: Guangdong Substanbo Technology Co., Ltd.
Address: 2508, Building 4, Tianan Cloud Park Phase II,
Bantian Street, Longgang District, Shenzhen, China 518100



+1(437)800-0151



support@bomaker.com



www.bomaker.com




@Bomaker Official

Made in China



RoHS

Documents / Resources

	<p>bomaker Njord II 2.1 Channel Soundbar with Active Subwoofer [pdf] User Manual NJORDS, 2AS9D-NJORDS, 2AS9DNJORDS, Njord II 2.1 Channel Soundbar with Active Subwoofer, 2.1 Channel Soundbar with Active Subwoofer</p>
---	---