



bomaker Magic 421 Max WiFi Projector User Manual

[Home](#) » [bomaker](#) » bomaker Magic 421 Max WiFi Projector User Manual

Contents [[hide](#)]

- 1 bomaker Magic 421 Max WiFi Projector
- 2 Important Safety Instructions
- 3 Packing List
- 4 Overview
- 5 Remote Control
- 6 Getting Started
- 7 Start Using
- 8 Screen Mirroring
- 9 Wired Mirroring(For Android System)
- 10 Wired Mirroring(For iOS System)
- 11 Bluetooth Connections
- 12 Specifications
- 13 Trouble Shooting
- 14 Documents / Resources
- 15 Related Posts



bomaker Magic 421 Max WiFi Projector



Important Safety Instructions

Thank you for purchasing Bomaker projector. Please read this manual thoroughly before using and keep it for future reference. If physical injury, loss of data, or damage is caused by failure to follow instructions, the warranty does not apply.

Setup

- Do not install the projector in places without proper ventilation.
- Do not install the projector in hot and humid places.
- Do not install the projector in dusty or smokey places.
- Do not block the ventilation holes (intake or exhaust).
- Do not install the projector near the temperature and smoke detectors. It may cause a sensor failure.
- Do not install the projector in areas where the warm and cool air will blow directly onto the projector, otherwise, it may cause projector failure due to moisture condensation or large temperature changes.

Power Supply

- Power off the device before removing the power supply from the socket.
- Use the power cord with caution to avoid unduly bending it. Damaged power cords may cause electric shock or fire.
- Unplug this device if there are lightning storms or when unused for a long period of time.
- Never touch the power cable or the power connection with wet hands.
- Unplug the power cord from the outlet after using the projector.

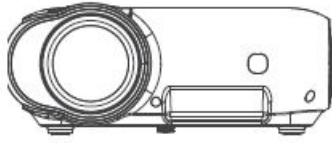
Repairs

- Never make any repairs to the projector yourself.
- No components in the projector can be repaired by customers.
- Please entrust qualified professional maintenance personnel for repair.

Caution

- Do not look at the lens, or it may cause severe eye injury.
- During and after use, the temperature near the outlet will rise. Therefore touching it may cause burns.

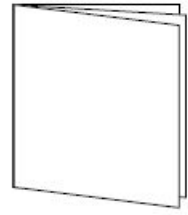
Packing List



Magic 421



Remote (Batteries
Not included)



User Manual



AV Cable



HD Cable

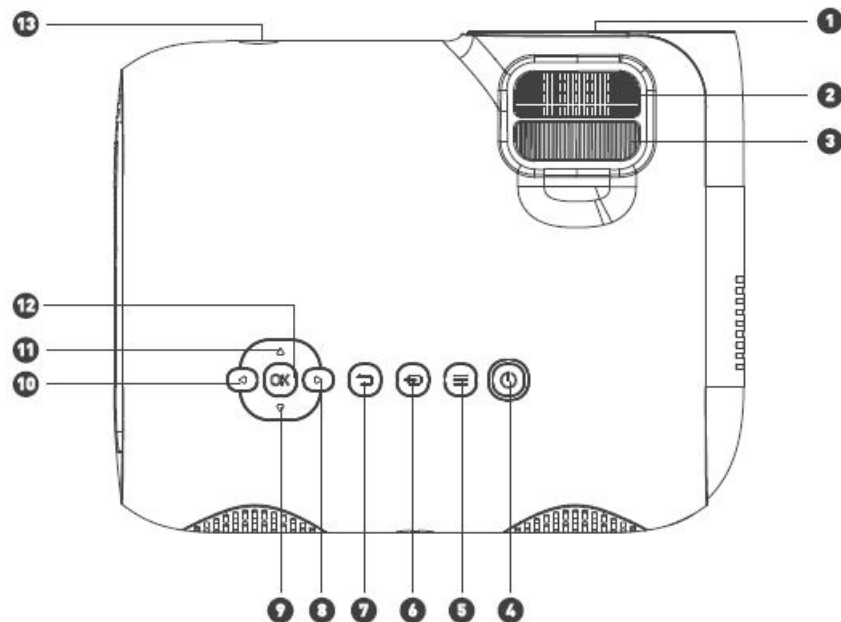


Power Cable



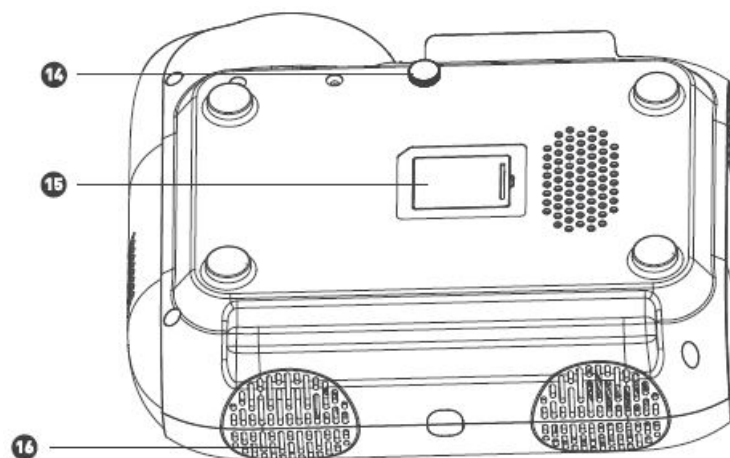
Adapter

Overview

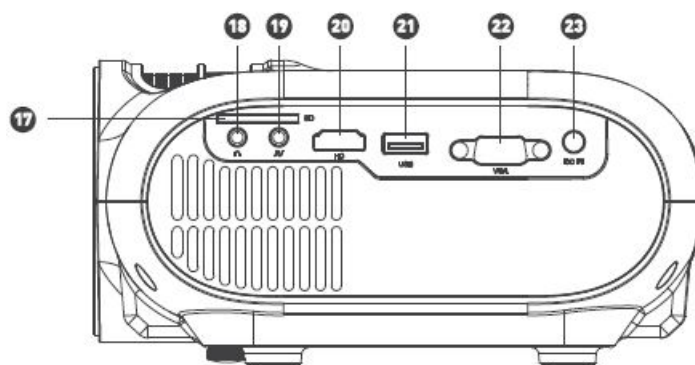


1. Lens
2. Focus
3. Keystone
4. Power
5. Menu
6. InputSource
7. Return
8. OK
9. Left Arrow
10. Right Arrow
11. Up Arrow
12. Down Arrow
13. Top Handle

- 8. Right
- 9. Down
- 10. Left
- 11. Up
- 12. .0K
- 13. IR

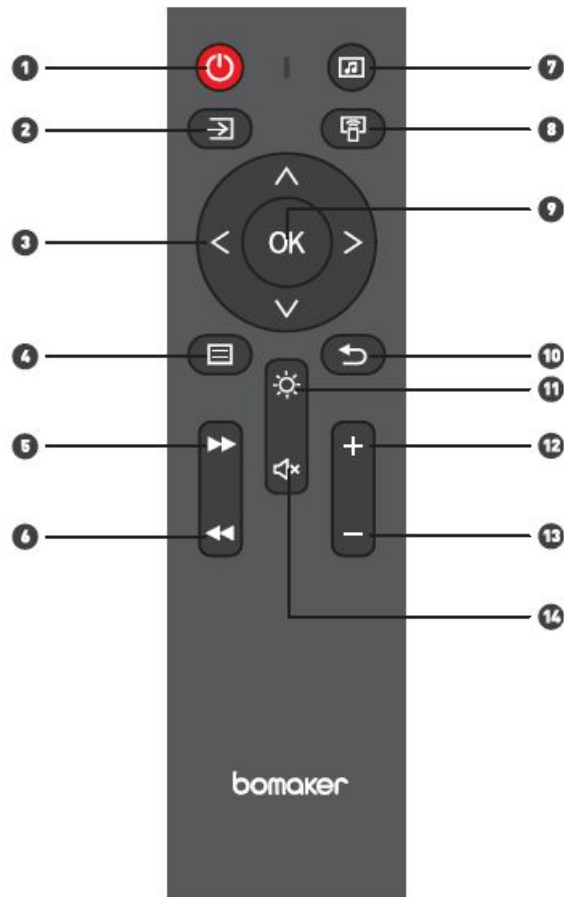


- 14. Adjusting Knob
- 15. Maintenance Window
- 16. Loudspeaker



- 17. SD
- 18. Audio Output
- 19. AV In
- 20. HDMI
- 21. USB
- 22. VGA
- 23. DC IN

Remote Control

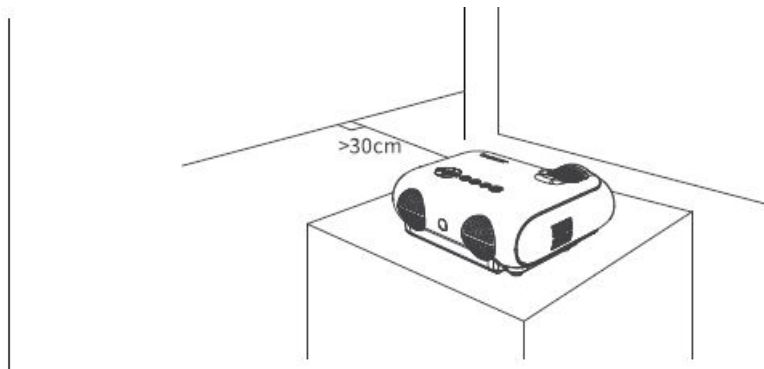


1. Power Switch
2. Input Source
3. Up/Down/Left/Right
4. Menu
5. Fast Forward
6. Rewind
7. One-key to Bluetooth pair
8. One-key to mirroring
9. OK
10. Return
11. One-key image brighten
12. Volume Up
13. Volume Down
14. Mute

Note: Only the Pro and Max models feature wifi function.

Getting Started

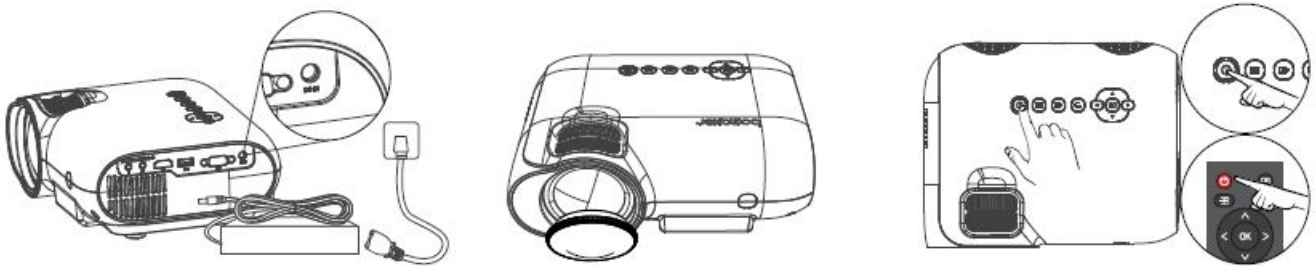
Projector Placement



Please leave at least a 30cm gap from walls to maintain adequate ventilation ensuring the projector's performance and reliability.

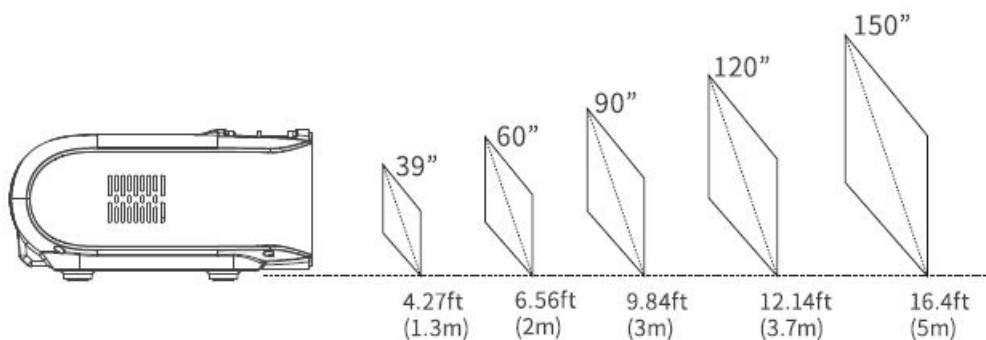
Start Using

Power On



1. Plug the power cord into an outlet.
2. Take off the lens
3. Press the power button to turn on the projector.

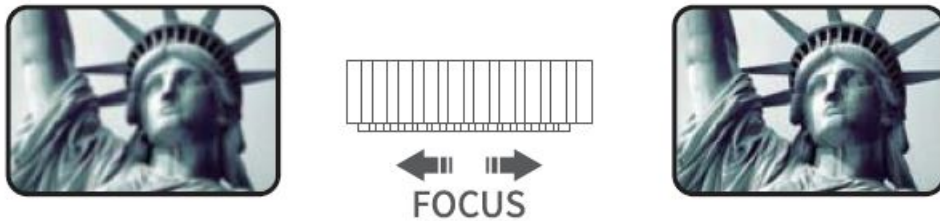
Projector Distance & Size



The recommended projection screen is around 80 inches with a projection distance of around 8.5 ft. Ambient darkness will improve the clarity of the projected images.

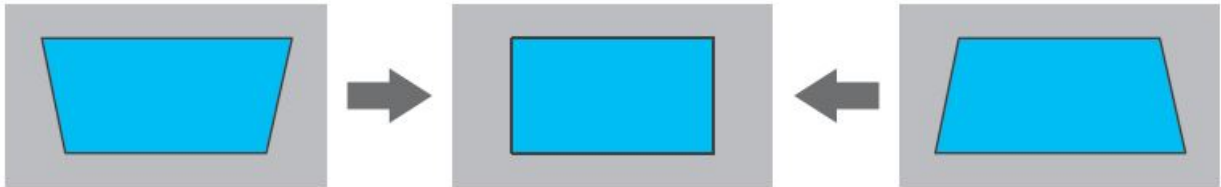
Adjusting the projected image

Please dial the focus knob slowly change the front and rear position of the lens and get a clear image.

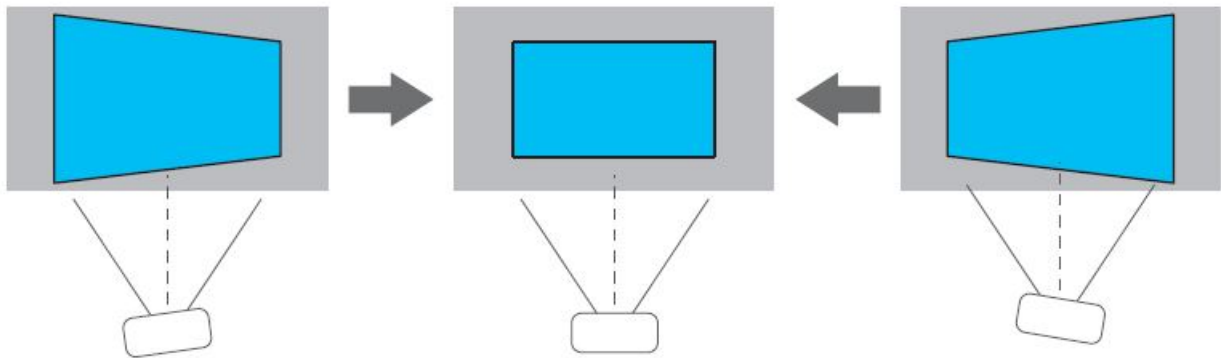


Keystone Correction

1. Adjust the keystone on the projector to adjust the images shape .



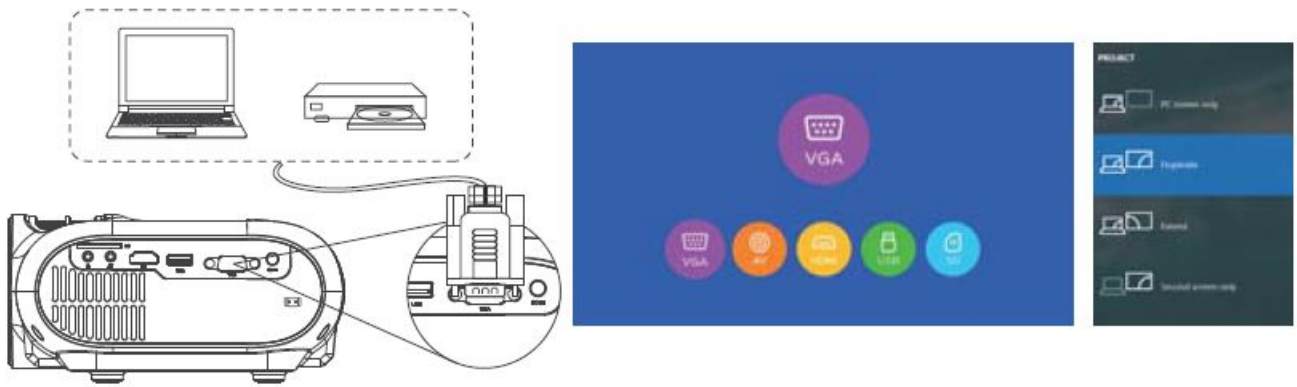
2. Adjust the placement of the projector. When the left side of the picture is wider, move the left side of the projector corresponding to the picture forward; when the right side of the picture is wider, move the right side of the projector corresponding to the picture forward .



Input Source VGA mode

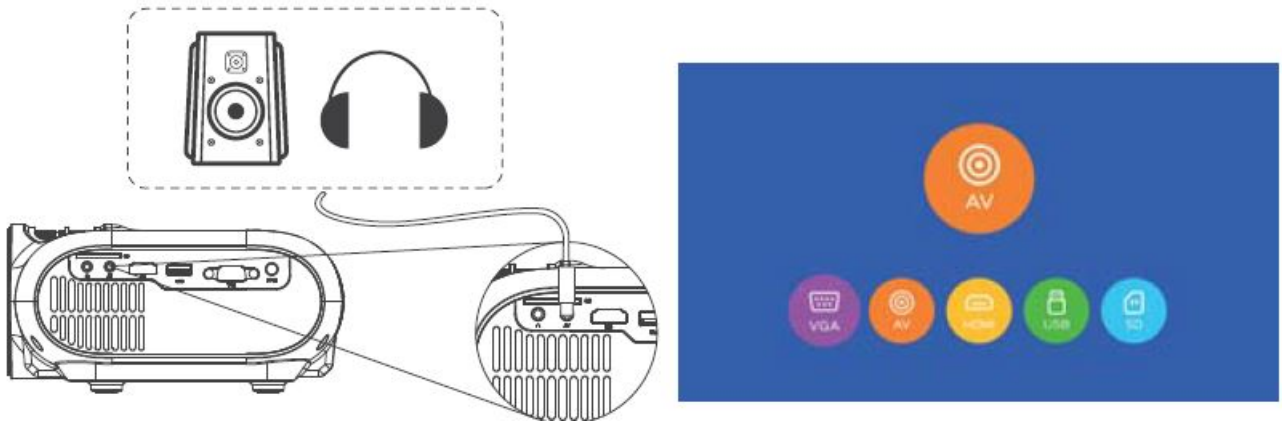
1. Step 1: Connect the projector and the device with a VGA cable.
2. Step 2: Press and hold the Source button ± 1 of the projector or remote control to enter the input source interface.
3. Step 3: Select VGA and press OK to enter. If the interface is not displayed successfully, please proceed to the next step.
4. Step 4: Use the shortcut key $||+P$ to enter the projection settings, select Duplicate to enter the interface. Step 5: Press the return key to exit and return to the main interface of the projector.

Note: When using the VGA mode, please change the resolution of the device connected to the projector to 1366*768 manually to get a better image effect



AVmode

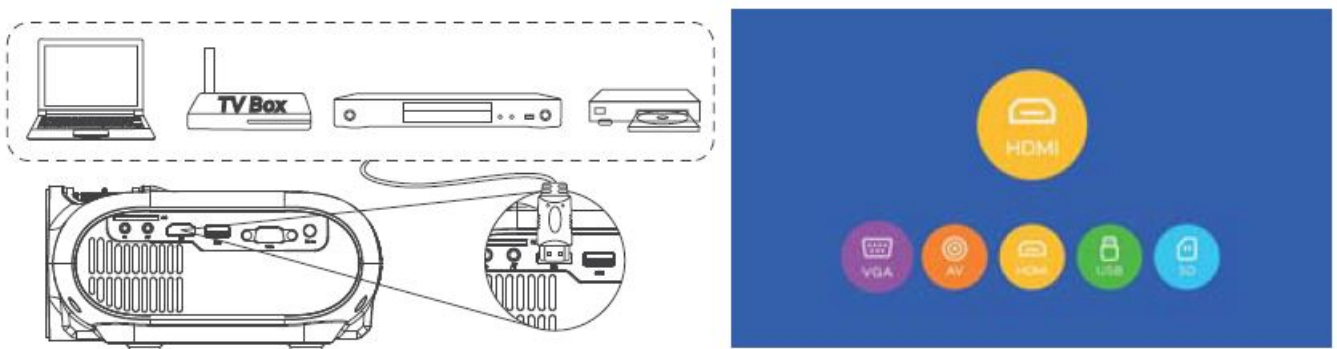
1. Step 1: Connect the projector and the device with the AV cable.
2. Step 2: Press and hold the Source button -[:E] of the projector or remote control to enter the input source interface.
3. Step 3: Select AV, press OK to enter, press return key to exit and return to the main interface of the projector.



HDMI mode

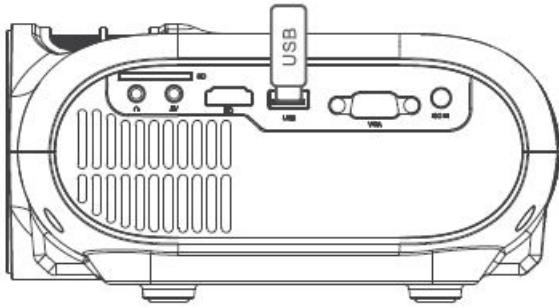
1. Step 1: Connect the projector and the device with HDMI cable.
2. Step 2: Press and hold the Source button of the projector or remote control to enter the input source interface.
3. Step 3: Select HDMI, press OK to enter; press Return to exit and return to the main interface of the projector.

Note: When using the HDMI mode, please manually change the resolution of the device connected to the projector to 1366*768 manually to get a better image effect



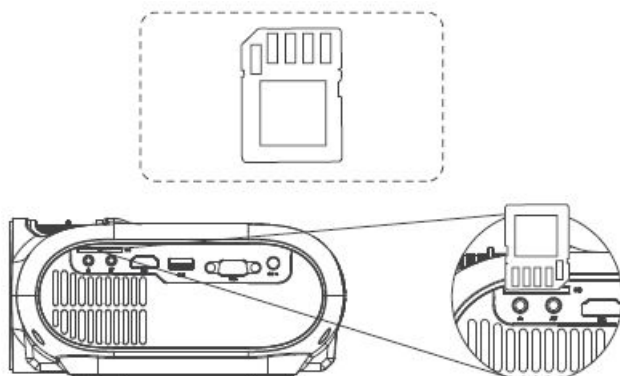
USBmode

1. Step 1: Connect the projector to the USB.
2. Step 2: Press and hold the Source button \pm 1 of the projector or remote control to enter the input source interface.
3. Step 3: Select USB and press OK to enter the module interface.
4. Step 4: Select the corresponding Movie, Music, and Picture modules of the file type, and press OK to enter the file interface.
5. Step 5: Select the file to be played in the file interface, and press OK to select play.
6. Step 6: Press the return key to exit and return to the main interface of the projector.



SDmode

1. Step 1: Connect the projector to the SD.
2. Step 2: Press and hold the Source button \pm 1 of the projector or remote control to enter the input source interface.
3. Step 3: Select SD and press OK to enter the module interface.
4. Step 4: Select the corresponding Movie, Music, and Picture modules of the file type, and press OK to enter the file interface.
5. Step 5: Select the file to be played in the file interface, and press OK to select play.
6. Step 6: Press the return key to exit and return to the main interface of the projector.



WiFi Settings

1. Turn on the projector and enter the projector main menu.



2. Use the direction buttons of the remote control to enter the mirroring interface, and press the OK button to enter WiFi settings.



3. Select the WiFi name to be connected, and use the remote control to control the virtual keyboard to enter the password.



4. Confirm OK, use the remote control to click the Enter button. The projector is successfully connected to WiFi.



Screen Mirroring

For IOS System (Streaming with WiFi)

1. Turn on the projector and enter the main interface of the projector.



2. Use the direction buttons of the remote control or the one-key mirroring button of the remote control to enter the mirroring interface. Notice: Only Pro and Max model feature one-key mirroring function.



3. Press and hold the remote OK button on the mirroring interface to enter the WiFi settings .



4. Select the WiFi name to be connected, and use the remote control to control the virtual keyboard to enter the password.



5. Please confirm OK, click the remote control "Enter" button and the projector will be connected to the WiFi successfully.
6. Open the WLAN setting on the mobile device, please make sure your mobile device and projector connected under the same WiFi.
7. Please switch the projector interface to "Screen Mirroring" via the remote control back button or the projector back button. Notice: Only Pro and Max model feature one-key mirroring function.
8. Open "Screen Mirroring" setting on the mobile device, choose "EKcast-xxxxxx" and connect.

9. Once connected successfully, your mobile device's screen will be displayed on the projection surface.



For IOS System (Streaming with cellular data)

1. Power on and enter the projector's main menu.



2. Enter "Screen Mirroring" interface via the remote control or projector direction button, or use the remote control one-key button to enter "Screen Mirroring" interface. Notice: Only Pro and Max model feature one-key mirroring function.



3. Open the iOS mobile device WiFi setting and connect the projectorWiFi. DEVICE:EKcast-xxxxxx
PIN:12345678
4. Find the screen mirroring settings on the iOS mobile devices, click and search the projector WiFi.

5. Select the projector device: EKcast-xxxxxx, click and connect.
6. Once connected successfully, your mobile device's screen will be displayed on the projection surface.



For Android System(Streaming with WiFi)

1. Power on and enter the projector's main menu.



2. Enter screen mirroring interface via the remote control direction button.



3. Click the remote OK button on the screen mirroring interface and enter the WiFi setting.

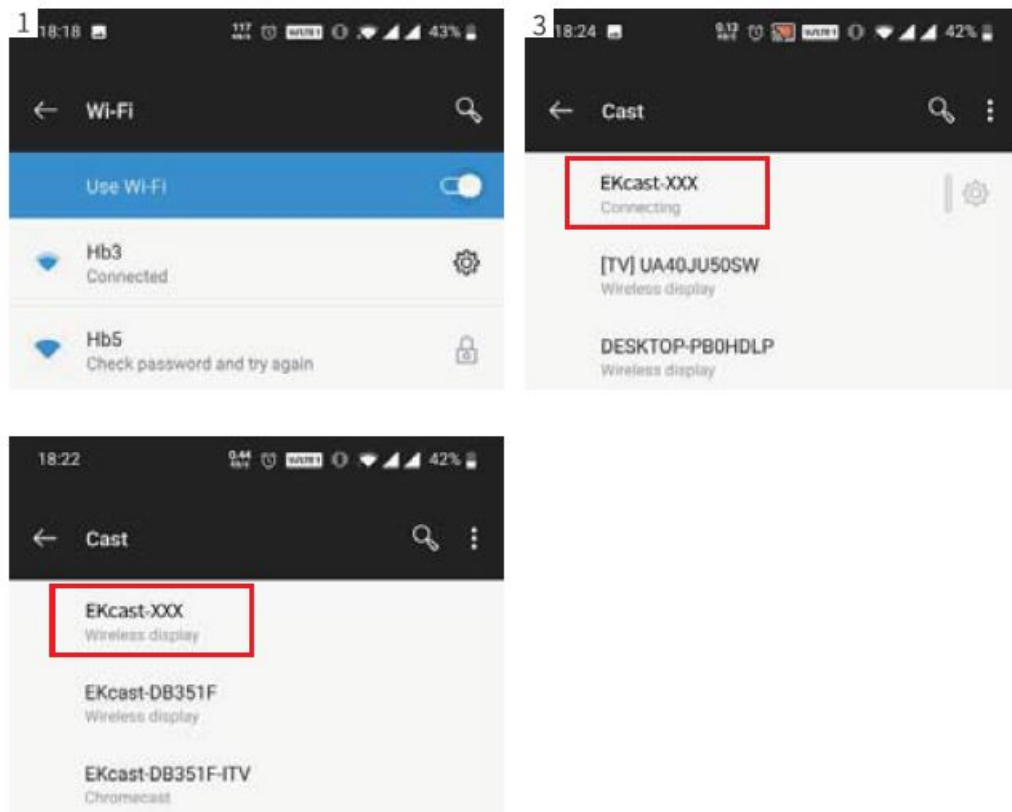


4. Select the WiFi name that needs to be connected, use the remote to control the virtual keyboard to enter the

password.



5. Confirm OK and use the remote control enter button, the projector connected the WiFi successfully.
6. Open the WLAN setting on Android device, please make sure your Android device and projector connected under the same WiFi.
7. Switch the projector to screen mirroring interface via the remote control or projector back button, or use the remote control one-key button to enter "Screen Mirroring". Notice: Only Pro and Max model feature one-key mirroring function
8. Select the projector device: EKcast-xxxxxx, click and connect.
9. Once connected successfully, your mobile device's screen will be displayed on the projection surface.



For Android System (Streaming with cellular data)

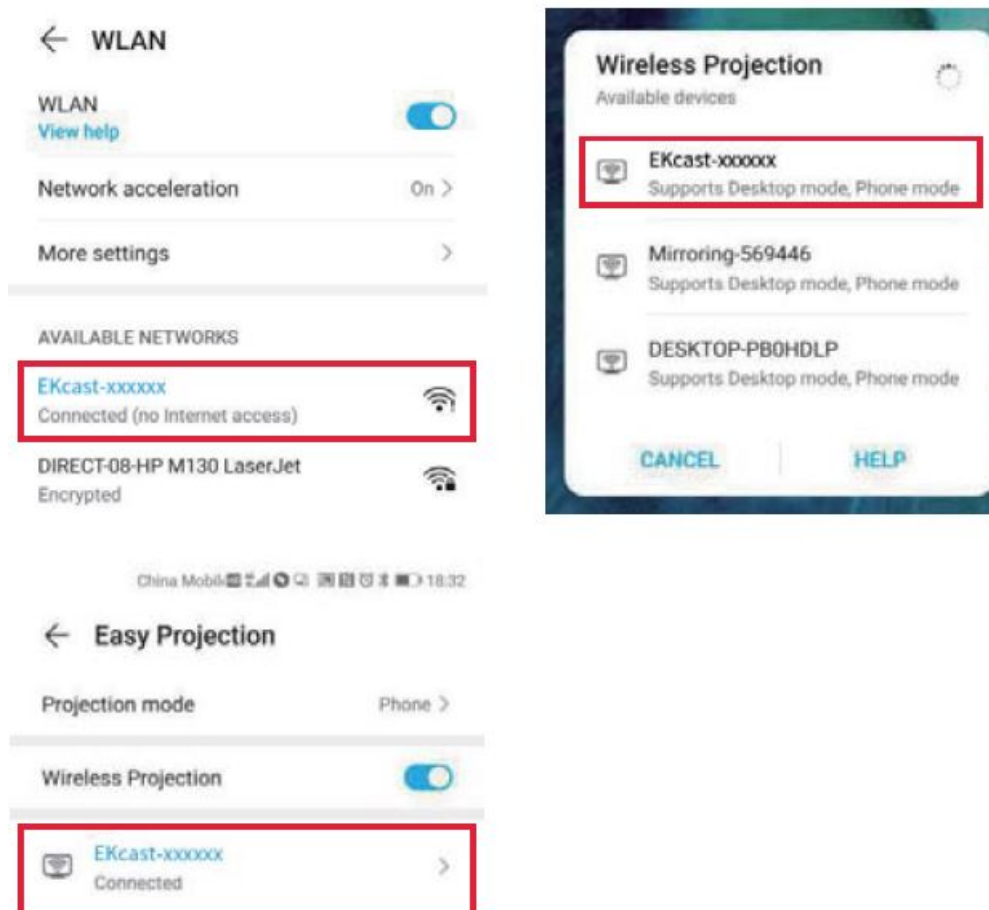
1. Power on and enter the projector's main menu.



2. Enter "Screen Mirroring" interface via the remote control or projector direction button, or use the remote control one-key mirroring button to enter '1Screen Mirroring" interface. Notice: Only Pro and Max model feature one-key mirroring function.



3. Open the WLAN setting on Android device and connect the projector WiFi DEVICE:EKcast-xxxxxx
PIN:12345678
4. Find the wireless projection settings on the Android mobile devices, click and search the projectorWiFi.
5. Open the screen mirror settings on your mobile phone device and select the projector device: EKcast-xxxxxx, click and connect.
6. Once connected successfully, your mobile device' s screen will be displayed on the projection surface.



For MacBook device

1. Power on and enter the projector's main menu.

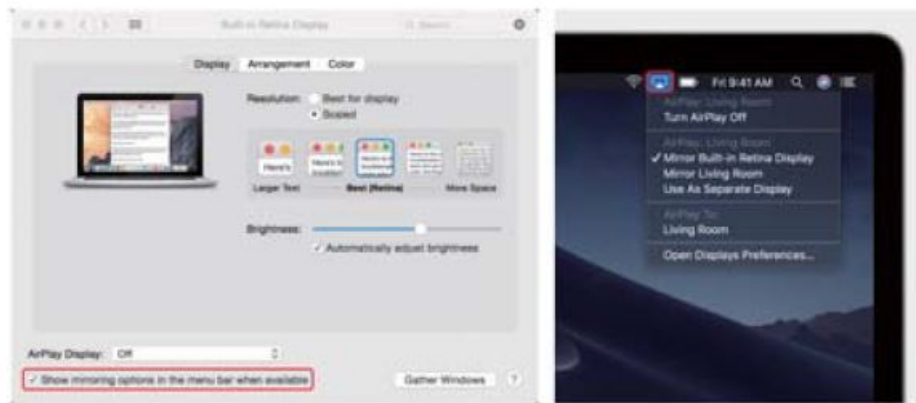


2. Enter "Screen Mirroring" interface via the remote control or projector direction button, or use the remote control one-key mirroring button to enter "Screen Mirroring" interface. Notice: Only Pro and Max model feature one-key mirroring function.



3. Connect the Mac Book to the projector WiFi DEVICE:EKcast-xxxxxx PIN:12345678

4. Turn on the setting and find “Airplay”, then click and search the projectorWiFi.
5. Select projector device: EKcast-xxxxxx, click and connect.
6. Once connected successfully, the projector’s screen display is the same as MacBook.

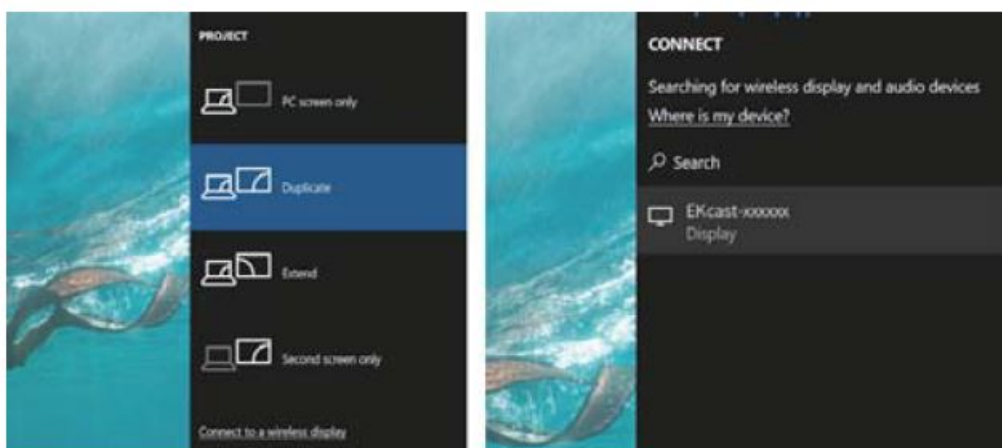


For Windows PC (Wireless Mira cast only support Window 10 system)

1. Power on and enter the projector’s main menu.
2. Enter “Screen Mirroring” interface via the remote control or projector direction button, or use the remote control one-key mirroring button to enter “Screen Mirroring” interface. Notice: Only Pro and Max model feature one-key mirroring function.

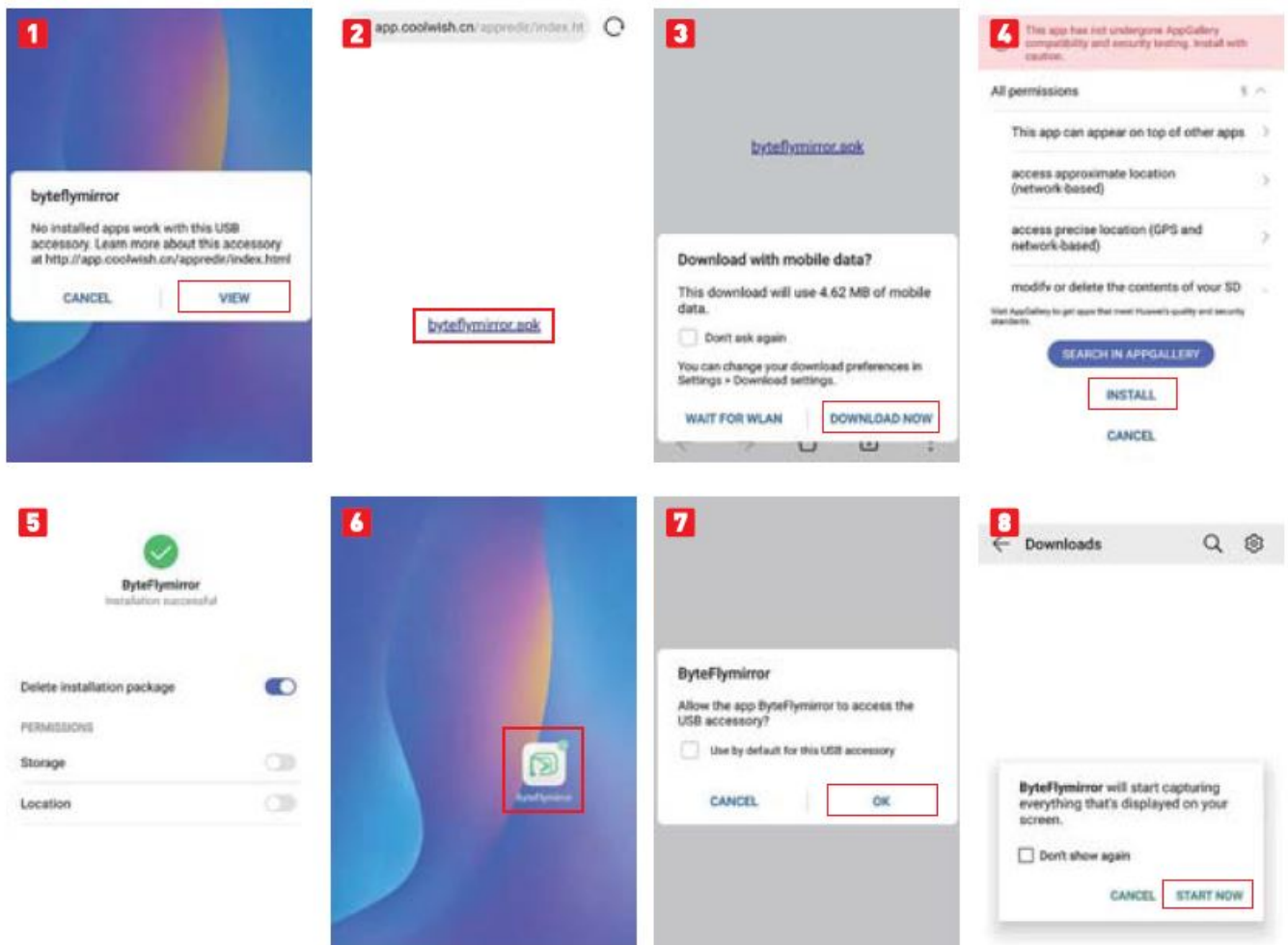


3. Connect Windows PC to the projectorWiFi DEVICE:EKcast-xxxxxx PIN:12345678
4. Use the shortcut key II+P to enter the projection settings, select Duplicate, click Connected to a wireless display to enter the device search.
5. Select projector device: EKcast-xxxxxx, click and connect.
6. The Wireless Screen Mirroring will be successful when the projector’ s screen display is the same as the device.



Wired Mirroring(For Android System)

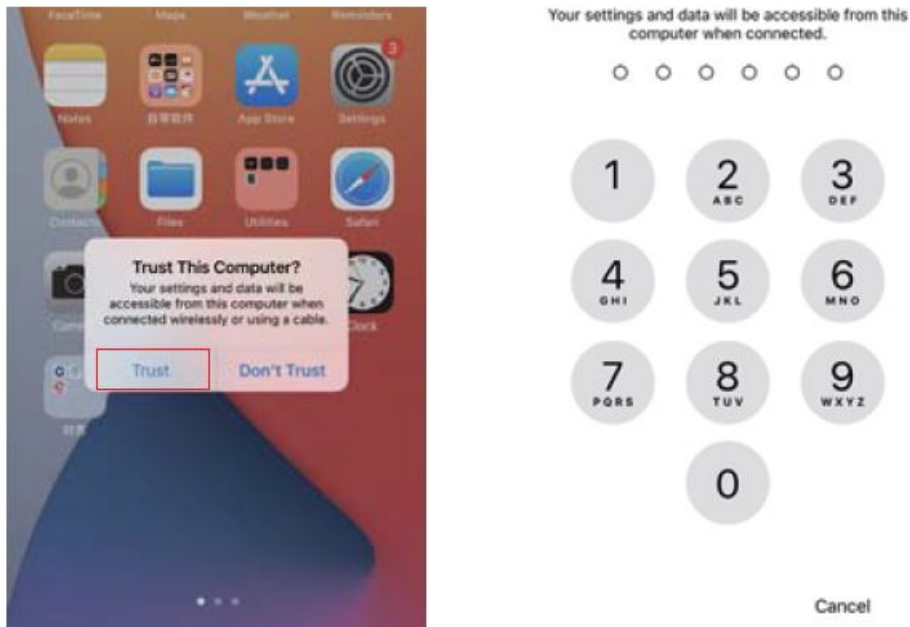
1. Step 1: Turn on the projector and enter the main interface of the projector.
2. Step 2: Use the direction buttons on the remote control to enter the mirroring interface.
3. Step 3: When using wired mirroring for the first time, connect the USB port of the mobile phone charging cable to the USB socket of the projector, and connect the charging port to the mobile phone charging port.
4. Step 4: After firm connection, the phone interface will automatically pop out a window, click “View” to transfer the pop-up URL to the browser.
5. Step 5: Click “byteflymirror.apk” on the browser interface to download, please install after downloading. Step 6: After the installation is complete, click on the “byteflymirror” app on the phone, and window 1 will pop up on the phone interface, click OK.
7. Step 7: After the confirmation is completed, window 2 will pop up on the phone, click “start now” to successfully mirroring the screen.
8. Step 8: Disconnect the mobile phone port to end the mirroring.
9. Step 9: Repeat Step 1, Step 2, Step 3, Step 7, and Step 8 for the second time mirroring .



Wired Mirroring(For 10S System)

1. Step 1: Turn on the projector and enter the main interface of the projector.
2. Step 2: Use the direction buttons on the remote control to enter the mirroring interface.
3. Step 3: When using wired mirroring for the first time, connect the USB port of the mobile phone charging cable to the USB socket of the projector, and connect the charging port to the mobile phone charging port.

4. Step 4: When you connect for the first time, window 1 will pop up on the phone interface, click “TRUST”, and window 2 will pop up, enter the phone password.
5. Step 5: Unplug the data cable connected to the charging port of the mobile phone and plug it in, then mirroring can be successfully.
6. Step 6: When connecting for the second time, connect the mobile phone and the projector with the mobile phone charging cable to mirroring .



Bluetooth Connections

1. Power on and enter the projector's main menu.

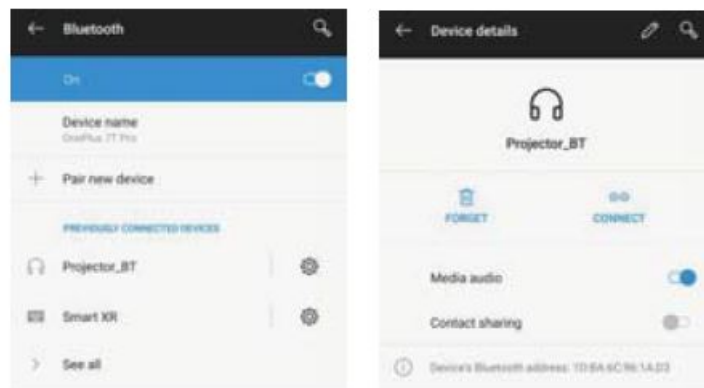


2. Enter “Bluetooth Mode” via the remote control or projector direction button, or use the remote control one-key Bluetooth button to enter BT mode. The Bluetooth name of the projector: Projector_BT



3. Open your devices Bluetooth settings, search and pair the projector Bluetooth . The Bluetooth name of the

projector: Projector_BT



4. You can use the remote control or projector direction button to enter the screen off button and press OK to enter BT mode in BT mode, press any button to light up the projector screen.
5. The playback track can be paused/previous/next via the remote control direction buttons or connected device.

Specifications

Features	Magic 421	Magic 421 Pro	Magic 421Max
Bluetooth	✓	✓	✓
One-key image brighten	✓	✓	✓
One-key to mirroring	X	✓	✓
WI FI	X	2.4G	2.4G+5G
Throw Ratio	1.4		
Display Technology	LCD		
Light Source	LED		
Aspect Ratio	16:9/4:3/Auto		
Focus	Manual		
Keystone	±15'		
Projection Mode	Front/Rear/Ceiling		
Speaker	I*SW		
Power Supply	DC 20V/3.6A		
Unit Dimension	237'188*91mm		
Unit Net Weight	1.26kg(2.78lb)		
Photo Format Supported	JPG/JPEG/PNG/BMP		
Audio Format Supported	MP2/MP3/WMA/FLAC/PCM		
Video Format Supported	AVI/MP4/MKV/FLV/MOV/RMVB/3G P/MPEG/H.264/XVID		
Ports	HDMI in/ USB Port/ Audio in/ AV in/ VGA Port/ SD Card Slot		
Mounting Screw	1/4 metric		
Number of Screw			

Trouble Shooting

Q1. Blurry Image

- Make sure the projection distance is farther than the minimum projection distance of 1.2 m.
- Adjust focus ring/keystone.

Q2. The content from Hulu,Netflix, and similar services cannot not be mirrored or cast?

Due to the copyright restriction from Hulu, Netflix, and similar services, the contents MAY NOT be mirroring.

Q3. What should I do if I want to watch the content from Hulu, Netflix, and similar services via the projector?

Please prepare a Fire TV stick,Roku stick or ChromecastTM(not included), then connect it to the projector to watch the content.

Q4. Remote Unresponsive

- Make sure remote points at IR receiver directly.
- Do not cover IR receiver.
- Try a new pair of AAA batteries.

Q5. The projector can't screen mirroring?

- Firstly, please kindly check whether the projector selects the Screen Mirroring input source and whether the device is connected to the projector WiFi .
- please make sure the device and projector connect to the same WiFi if the projector features WiFi function.
- Please unplug the power and re-apply it again If the Screen Mirroring input source is selected and the WiFi is connected while the projector still can't screen mirroring .
- Please reset the projector if it still can't work after unplugging the power.
- please feel free to contact us .

Q6. Black spots appear on the projector image?

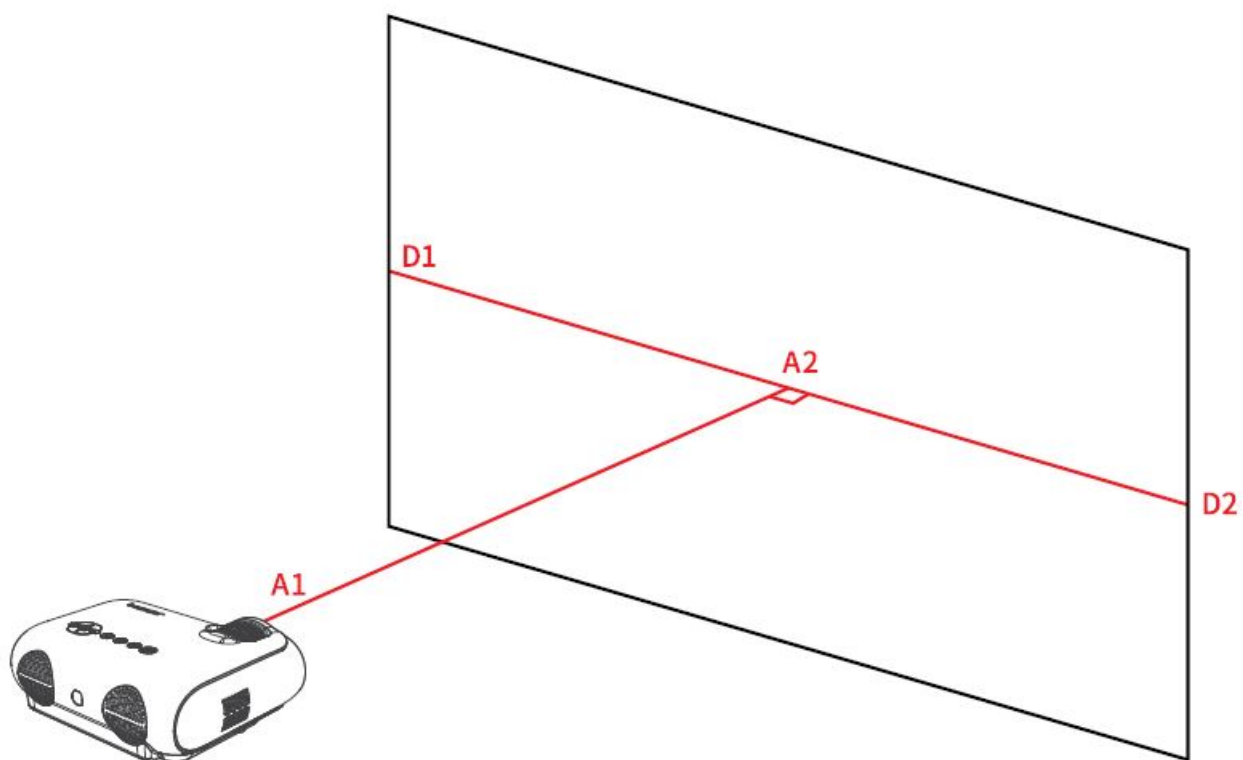
Open the Maintenance Window on the bottom of the projector.

Q7. Fail to connect the Bluetooth?

- Please open the projector and device Bluetooth setting
- please check if the device pair with the projector successfully.
- If the projector can't work if paired, please unplug the power and re-apply it again.

QB. How far between the projector and the wall to get a 100 inches image?


The projector throw ratio is 1.4, and the length of the 100-inch screen DID2 is 2214mm. The throw ratio = the distance from the projector to the wall A1A2/the projection screen length DID2 According to $1.4 = A1A2/2214$, A1A2 is 3099 mm.



Q9. There is no signal on the projector?

- Please make sure all cables are connected to the projector correctly and stably.
- Please check whether the projector input source mode has been selected as the correct source.
- For example: if the device and the projector are connected with an HDMI cable, the HDMI input source must be selected for projection, otherwise there is no signal if other source are selected.

Documents / Resources

	<p>bomaker Magic 421 Max WiFi Projector [pdf] User Manual MAGIC421S, 2AS9D-MAGIC421S, 2AS9DMAGIC421S, Magic 421 Max WiFi Projector, Max W iFi Projector, WiFi Projector, Projector, Magic 421</p>
---	---