



# **bol.com LED Ceiling Fan with Remote Control and TUYA App Control Instruction Manual**

[Home](#) » [bol.com](#) » bol.com LED Ceiling Fan with Remote Control and TUYA App Control Instruction Manual 

## **Contents**

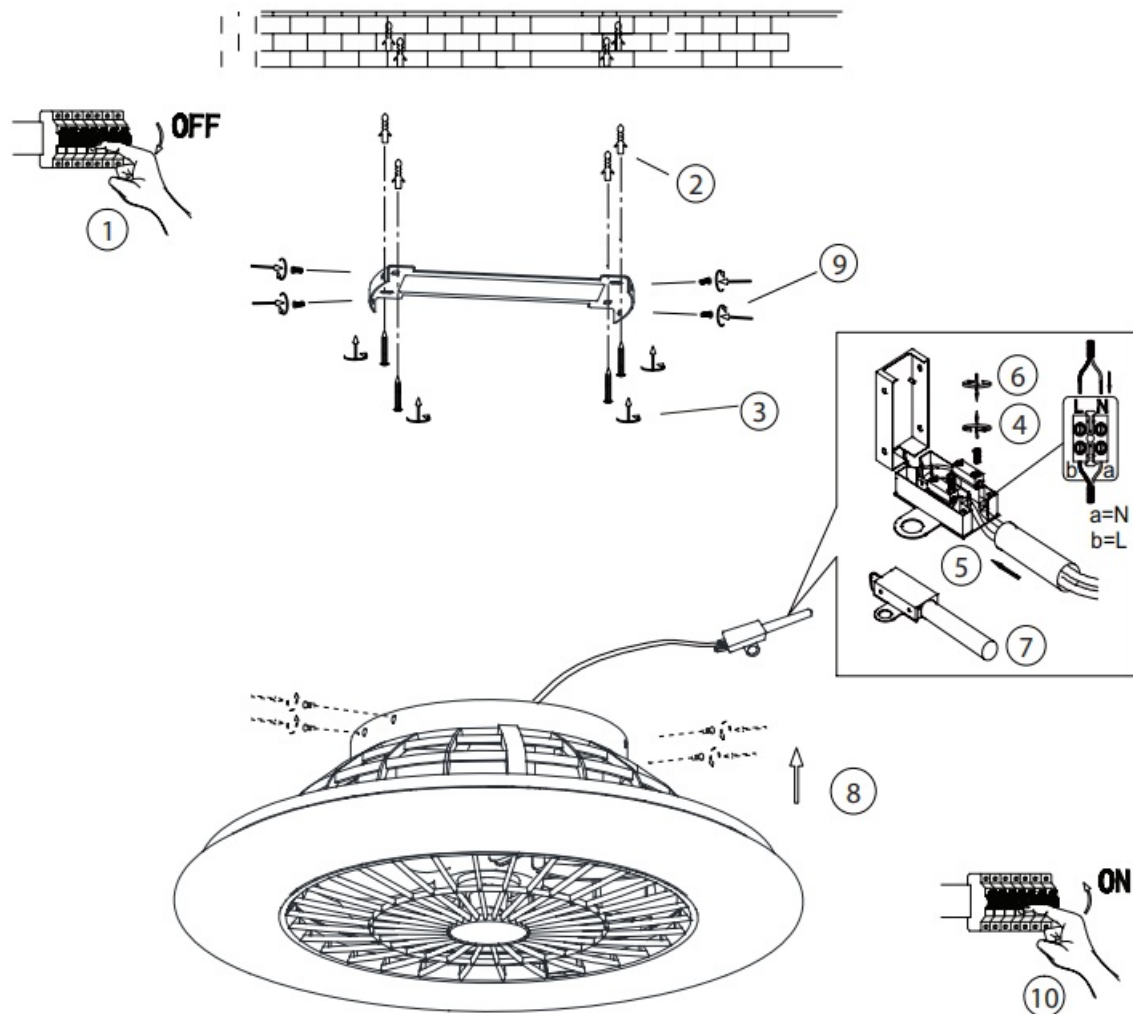
- [1 bol.com LED Ceiling Fan with Remote Control and TUYA App Control](#)
- [2 INSTALLATION MANUAL LED CEILING FAN](#)
- [3 INSTRUCTIONS REMOTE CONTROL](#)
- [4 Brightness](#)
- [5 INSTRUCTIONS TUYA APP](#)
- [6 Safety guidelines](#)
- [7 Warranty](#)
- [8 Documents / Resources](#)
- [9 Related Posts](#)



**bol.com LED Ceiling Fan with Remote Control and TUYA App Control**



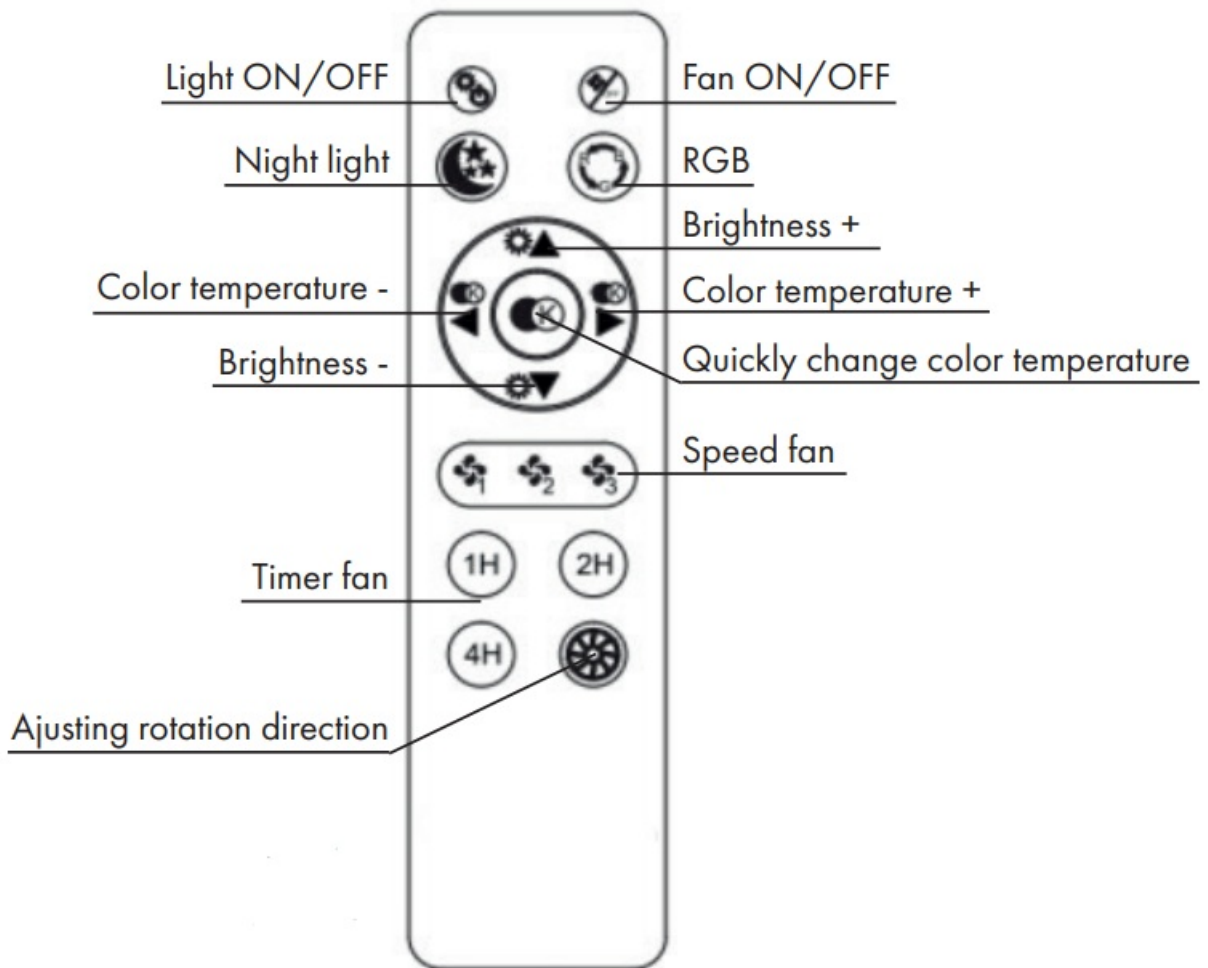
## INSTALLATION MANUAL LED CEILING FAN



1. Switch off electricity
2. Mount the ceiling plate
3. Connect the wires
4. Install fan on ceiling plate
5. Switch on electricity
6. Control with remote or app

- **Voltage:** 220-240V
- **Current:** 50/60 Hz
- **Protection grade:** IP20, indoor use only
- **Watt:** 43 watt
- **Lumen:** 1500 lumen
- **Dimension:** Ø50 x H16 cm
- **Controller:** Remote control or TUYA app

## INSTRUCTIONS REMOTE CONTROL



- **Battery:** 2 x AAA, 1.5V
- **Distance:** 6 meter
- **Output:** Radio frequency
- **Voltage:** 3V

## Brightness

- Long press: gradually min/max
- Short press: min/max individual stages

## Color temperature

- Long press: gradually min/max
- Short press: min/max individual stages

## Quickly change color temperature

- 1 x press to quickly change between 2700K (warm white), 3500K (bright white) and 5000K (cold white)

## INSTRUCTIONS TUYA APP

### **Step 1:** Download and install the Tuya app

1. Turn on the bulb while ensuring that your phone is connected to the 2.4 GHz Wi-Fi network.
2. Use your phone to scan the QR code below or search 'Tuya Smart' in the App Store to download and install the app.



### **Step 2:** Register or log into your account

If you don't have a Tuya account yet, you can register a new account. You can do so by following the steps below:

Click on the button 'Register' in the top right corner of the screen.

- Select your country and fill in your email address. Accept terms and conditions.
- You will now receive a verification code. Fill in this code and create a password.  
Tap 'Confirm' to finish your registration.
- You can now log in with your email address and chosen password.  
If you don't have a Tuya account yet, you can register a new account.  
You can do so by following the steps below:

### **Step 3:** Add your device

To add the smart bulb to your device, click on 'Add device' or on the '+' in the right corner of the screen. The app will start looking for devices itself (see step 4) or you can add it manually from the list.

### **Step 4:** Put your smart lamp in discovery mode

Turn your smart bulb on and off for three times in a row (on-off-on-off-on). Ensure that your smart bulb is flashing/blinking quickly (twice a second) which indicates that the device is in configuration. The smart bulb is now ready to be connected to the Tuya app. Click the 'Confirm light blinks rapidly' button on the page to start the configuration.

### **Step 5:** Access settings

After setting up successfully, you can now see your smart bulb on the 'Devices' page. You are now also able to give the smart bulbs a name, for example 'Kitchen lamp' or 'Big lamp'.

### **Step 6:** Control devices

1. Open the light control page. If it is off, only the 'Schedule' function will be displayed. If the light is on, the complete function will be displayed at the bottom.

2. Click on 'White' to manually adjust the brightness and color temperature.
3. Click on 'Color' to manually select a color.
4. Click on 'Scene', you can choose the lighting mode under different scenes.

#### **Step 7: Profile**

You are now able to adjust the settings and manage the timer setting with the Tuya app. You can control the Tuya app with your voice or through the screen.

For all possibilities of the app consult the FAQ menu.

### **Safety guidelines**

#### **Notes on disposal**

The product is designated for separate collection at an appropriate collection point.

Do not dispose of the product with household waste. For more information, contact the retailer or the local authority responsible for waste management.

#### **Care**

Before cleaning the unit, disconnect it from the power outlet, if necessary. Do not use aggressive cleaning agents.

### **Warranty**

The unit has been carefully checked for defects. If nevertheless you do have cause for complaint, please go back to the retailer where you have bought the product together with your proof of purchase.

#### **Safety General advices**

- Read the manual carefully before use. Keep the manual for future reference.
- Only use the product for its intended purposes. Do not use the product for other purposes than described in the manual.
- Do not use this product if any part is damaged or defective. If the product is damaged or defective, replace the product immediately.
- Do not modify the product in any way.
- Do not expose the product to water or moisture (IP20).
- Do not immerse the product into water (IP44 – IP66).
- Keep the product away from heat sources.
- Do not block the ventilation openings.
- Do not look directly into the light source of the LED lamp.
- Keep a minimum distance of >2 metres between the lamp and the surface being illuminated.

#### **Electrical safety**

- To reduce risk of electrical shock, this product should only be opened by an authorized technician when service is required.
- Do not use the product if the cable or plug is damaged or defective.
- When damaged or defective, it must be replaced by the manufacturer or an authorized repair agent.
- Before use, always make sure that the voltage is the same as the voltage on the rating plate of the device.

Warning

- The light source contained in this luminaire shall only be replaced by the manufacturer or his service agent or a similar qualified agent.
- Caution, risk of electric shock.
- The external flexible cable or cord of this luminaire cannot be replaced; if the cord is damaged, the luminaire has to be destroyed.
- This product is not a toy – please keep it inaccessible for children.

Disclaimer

We reserve the right to make technical modifications without notice. We are not liable for damage arising from incorrect handling, improper use or wear or tear.

Documentation

The product has been manufactured and supplied in compliance with all relevant regulations and directives, valid for all member states of the European Union. The product complies with all applicable specifications and regulations in the country of sales. The declaration of conformity is available upon request.

CE declaration

This product complies with the following directives:

- **LVD:** 2014/35/EU (Not applicable for solar products)
- **EMC:** 2014/30/EU
- **RoHS:** 2011/65/EU
- **ADDRESS:** Additionally, for products with Radio transmitter units:
- **RED:** 2014/53/EU

Imported by Lumen Import B.V.  
Postbus 15980, 1001 NL  
Amsterdam, the Netherlands  
Made in China

Documents / Resources

LED Fan with remote control and TUYA app control  
RGB-color and adjustable color temperature

INSTALLATION MANUAL  
REMOTE INSTRUCTIONS

CE RoHS REACH

Import: Lumen Import B.V. | 1001 NL Amsterdam, the Netherlands

1	Nederlands	.....	31
2	Engels	.....	32
3	Duits	.....	33
4	Frans	.....	34
5	Spaans	.....	35
6	Portugees	.....	36
7	Italiaans	.....	37
8	Duits	.....	38
9	Spaans	.....	39

[bol com LED Ceiling Fan with Remote Control and TUYA App Control](#) [pdf] Instruction Manual

LED Ceiling Fan with Remote Control and TUYA App Control, LED Ceiling Fan with Remote Control, LED Ceiling Fan, Ceiling Fan, LED Fan