



boifun Baby 6T 2K Smart Add On Camera User Manual

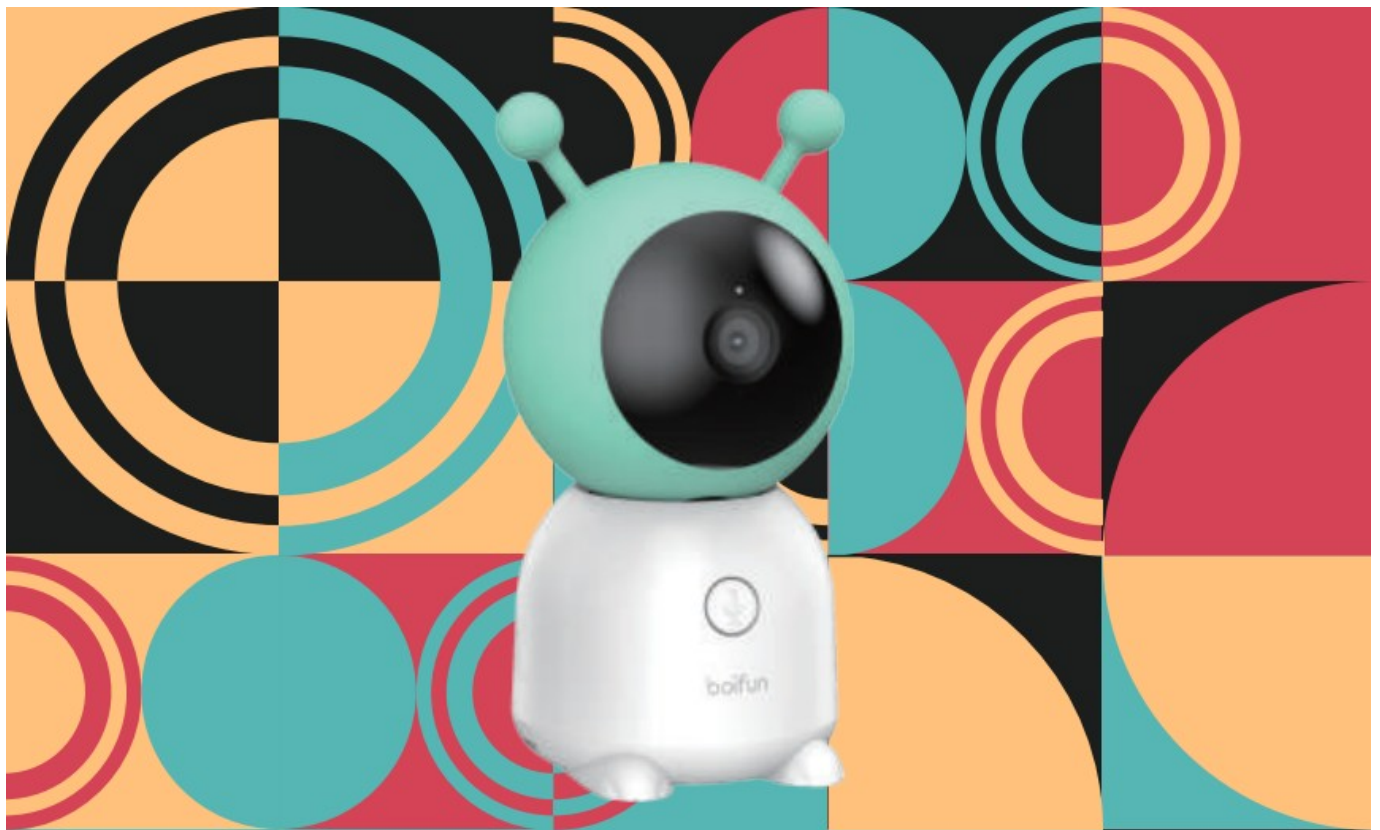
[Home](#) » [BOIFUN](#) » boifun Baby 6T 2K Smart Add On Camera User Manual 



Contents

- [1 Baby 6T 2K Smart Add On Camera](#)
- [2 FCC Statement](#)
- [3 AFTer-sale Support](#)
- [4 What's in the box](#)
- [5 Description](#)
- [6 Installation](#)
- [7 Connection](#)
- [8 Usage](#)
- [9 Documents / Resources](#)
 - [9.1 References](#)

Baby 6T 2K Smart Add On Camera



**Baby 6T
2K Smart Add On Camera**

FCC Statement

This equipment has been tested and found to comply with the limits for a Class 8 digital device, pursuant to part 15 of the FCC rules. These limits are designed to provide reasonable protection against harmful interference in a residential installation. This equipment generates, uses and can radiate radio frequency energy and, if not installed and used in accordance with the instructions, may cause harmful interference to radio communications. However, there is no guarantee that interference will not occur in a particular installation. If this equipment does cause harmful interference to radio or television reception, which can be determined by turning the equipment off and on, the user

Is encouraged to try to correct the interference by one or more of the following measures:

- Reorient or relocate the receiving antenna.
- Increase the separation between the equipment and receiver.
- Connect the equipment into an outlet on a circuit different from that to which the receiver is connected.
- Consult the dealer or an experienced radio/TV technician for help.

Responsible for compliance could void the user's authority to operate this equipment. (Example-use only shielded interface cables when connecting to computer or peripheral devices).

Any Changes or modifications not expressly approved by the party responsible for compliance could void the user's authority to operate the equipment.

This equipment complies with Part 15 of the FCC Rules. Operation is subject to the following two conditions:

1. This device may not cause harmful interference, and:
2. This device must accept any interference received, including interference that may cause undesired operation.

FCC Radiation Exposure Statement:

The equipment complies with FCC Radiation exposure limits set forth for uncontrolled environment, This equipment should be installed and operated with minimum distance 20cm between the radiator and your body.

After-sale Support

Dear friends,

Thank you very much for supporting BOIFUN !

If you have any issues, please email your order number and the problem to admin@bcifun.net. Receiving your message, we will provide a fast solution in 24 hours. Please do not worry. Actually, many problems can be easily solved by setting, such as Battery Management. Networking Connection Fails, VOX made, Alarm sound too loud, etc. If you have any questions or ambiguities during using, please feel free to contact us. We will try to find a good solution with our professional engineers, and reply you in 24 hours.

Warm Regards

BOIFUN Service Team

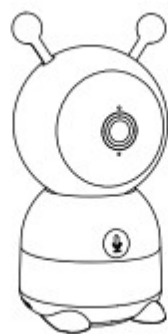


Official website

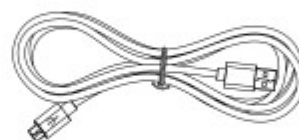
<http://qr.hotlink.cn/url/79829115556>

What's in the box

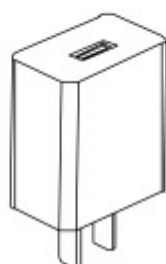
Please consult this checklist for all parts.



Camera



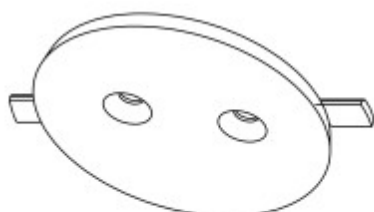
USB cable x 1



Power adapter x 1



Screws

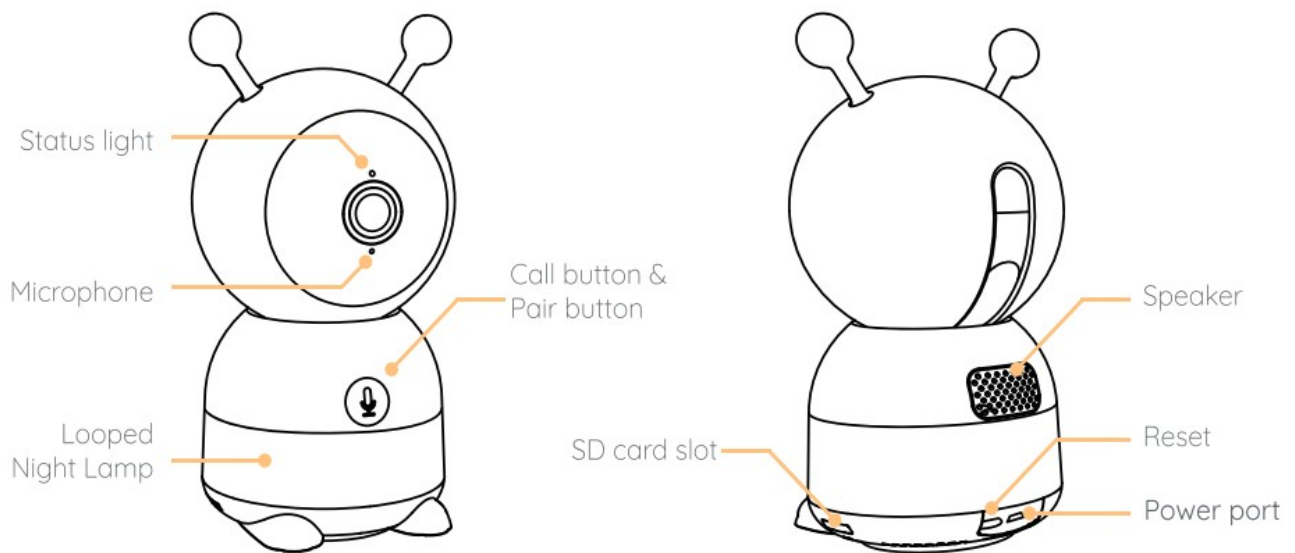


Bracket



Manual

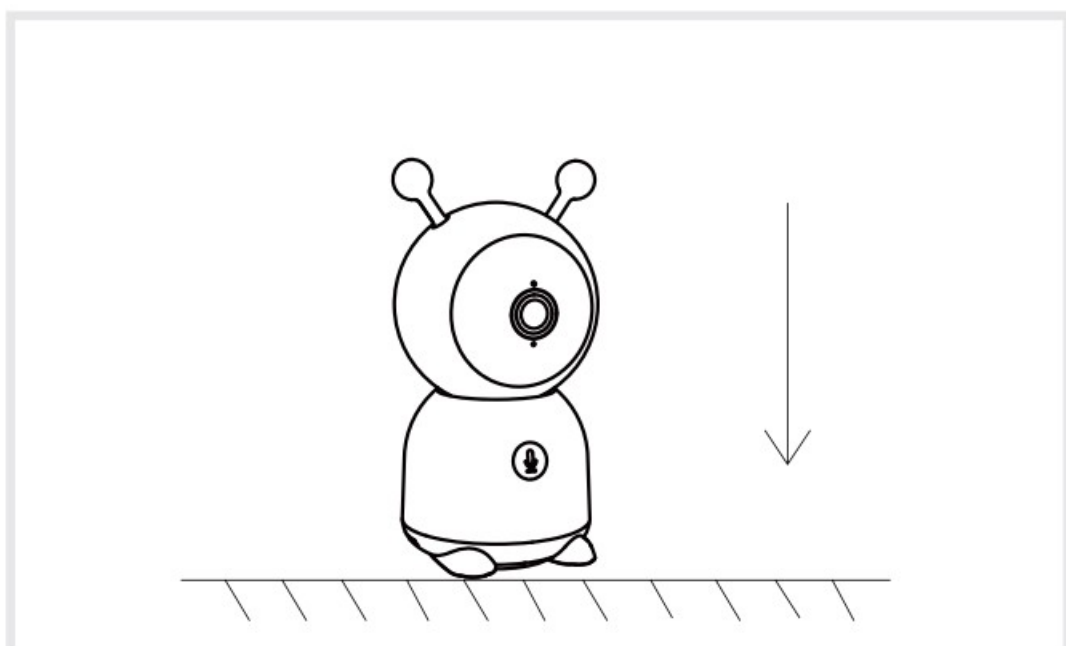
Description



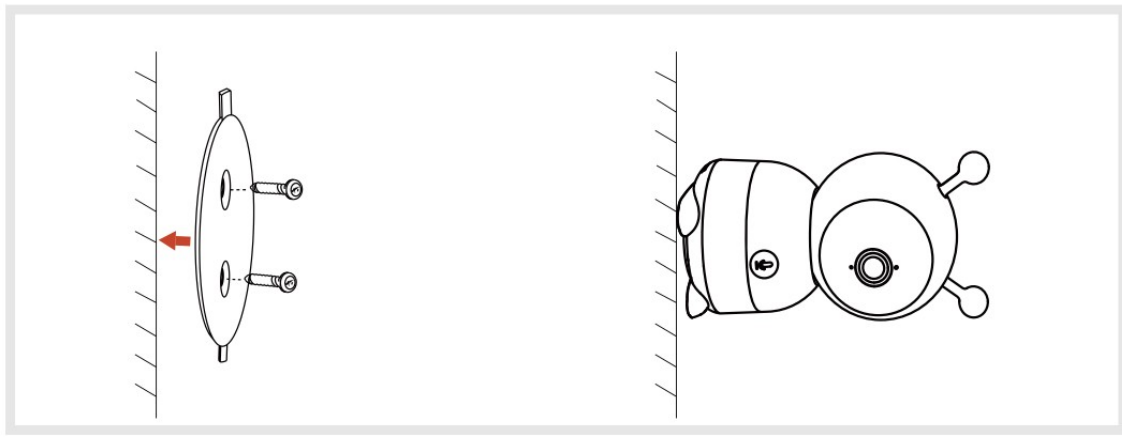
Power Port	DC 5V/1A
Microphone	Capture sound for your video
SD cord slot	Support loco! SD Cord storage (Mooc128G)
Status light	<ul style="list-style-type: none"> •Solid red light on: network is motfunctional •Banking red light wail for network connection (slowly blinking) connecting the network (fast blinking) •Solid blue light art carters is working correctly
Coll/Poiring	Press to make o call to phone:long press for 5 seconds to pck
Reset	Press RESET for S seconds to reset the comero (If you have modified settings, they will return to factory defaults)

Installation

1. Install the camera on a flat surface.



2. Or use the included mounting bracket to fix the camera to a clean surface.




Connection

Connect the camera to the display

Power on the camera and the display and then the camera will connect to the display automatically.


Note: If the connection to each other is not successful the first time, press and hold the reset button on the back of the camera and reconnect the monitor after the second beep of the camera. The connection is distance limited, so make the distance between the camera and the display is no more than 1000ft.

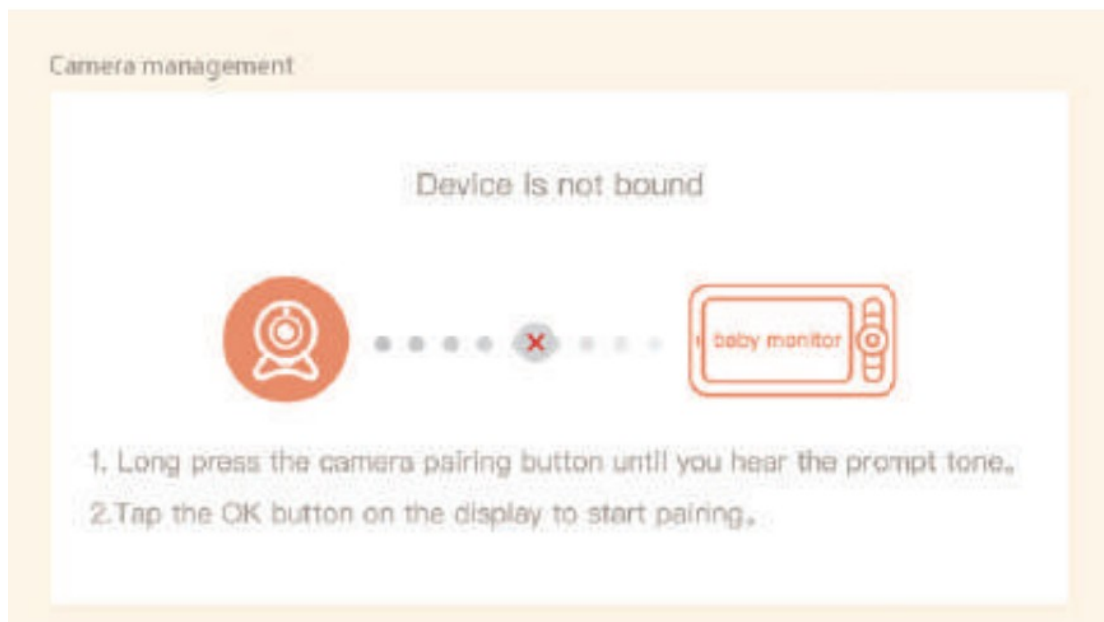
Disconnect the camera to the display:

1. Press Menu button on the display screen, and select  > Camera Management.
2. Long press the OK button on the display screen to release the binding.



Reconnect the camera to the display:

1. Press the Menu button on the display screen, and select .  > Camera Management
2. Long press the camera pairing button until you hear the prompt tone.
3. Press the OK button on the display screen to start pairing.



NOTE: If you have problems with connection, please feel free to contact admin@boifun.net for one-on-one customer service guidance.

2. Connect the camera to the App

The camera can be connected both to the display and the App. Generally, it is connected to the display by default.

Follow the steps below to connect the camera to the App:

1. Make sure the Wi-Fi network is a 2.4 GHz network, as the camera doesn't support 5 GHz Wi-Fi.
2. Download the **BoifunCam** App on your phone. Register a new account to log in or log in directly.
3. Press the Reset button for five seconds until you hear the "BOOGU" beep, which means the camera has been reset, after 10-20 seconds, you will hear another beep and the red light of the camera blinks slowly.
4. Follow the step instructions on your smartphone to add the cam, and scan the QR code with your camera

Usage

1. Download

BoifunCam is available for both (OS and Android OS. Search the name "BoifunCam" in App Store or Google Play or scan the QR-Code to download the App.



Download the APP

<http://qr.hotlink.cn/79847667793>

Note: A very small number of mobile phone models may not be compatible with BoifunCam.

We apologize for any inconvenience this may cause. If you encounter this situation, could you please send us your phone model by email? Our email address is admin@boifun.net. We will optimize the software in time, and we have prepared a backup software "CloudEdge" for you, which you can download and use from the Google Store or Apple Store. We would greatly appreciate your understanding and kindness!

2. Add device

Log in the BoifunCam, select "Add Device", then select wifi smart camera and add the smart camera to the App according to the screen tips (Make the smart camera close to the router when configuring).

NOTE:


1. If you have problems with BoifunCam, please feel free to contact admin@boifun.net for one-on-one customer service guidance



2. If you need to re-select the WiFi network, please press and hold the “RESET” button for 5 seconds, the device will restart, and the indicator will be flashing red.



Documents / Resources

	<p>boifun Baby 6T 2K Smart Add On Camera [pdf] User Manual</p> <p>Baby 6T, Baby 6T 2K Smart Add On Camera, Baby 6T, 2K Smart Add On Camera, Smart Add On Camera, Add On Camera, On Camera, Camera</p>
---	---

References

- [User Manual](#)

[Manuals+](#), [Privacy Policy](#)