



BOBOLEE 2020 Case with Magnetically Detachable Wireless Keyboard User Manual

[Home](#) » [BOBOLEE](#) » BOBOLEE 2020 Case with Magnetically Detachable Wireless Keyboard User Manual 

BOBOLEE®

WIRELESS KEYBOARD CASE



USER MANUAL

Contents

- 1 Package Contents
- 2 Product Overview
- 3 Pairing Instructions
- 4 Function Keys
- 5 Installation and Removal
- 6 Input Method Switching
- 7 Indicator description
- 8 Charging Instructions
- 9 Troubleshooting
- 10 Specifications
- 11 Usage Tips
- 12 Question & Answer
- 13 Documents / Resources
 - 13.1 References

Package Contents



iPad Protective Case

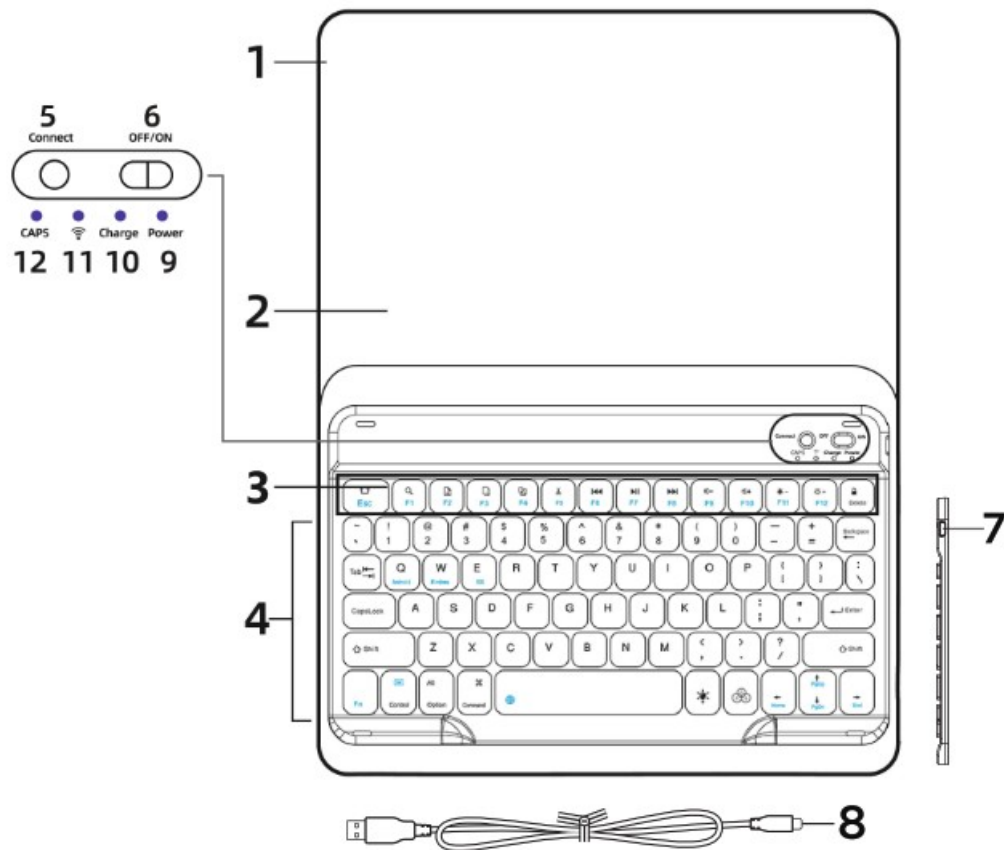


Charging Cable

Product Overview

<ul style="list-style-type: none">1. iPad holder2. Protective case3. Shortcut keys4. Keyboard5. Bluetooth connect button6. On/off switch	<ul style="list-style-type: none">7. Type-C USB charging port8. Type-C USB charging cable9. Power LED: Power indicator10. Charge LED: Charging indicator11. WIFI LED: Bluetooth status light12. CAPS LED: Caps lock indicator
-----------------------------------------------------------------------------------------------------------------------------------------------------------------------------------------------------	------------------------------------------------------------------------------------------------------------------------------------------------------------------------------------------------------------------------------------------------------------------------------------------

Features: The keyboard will enter into sleeping mode if there is no action in 15 minutes.



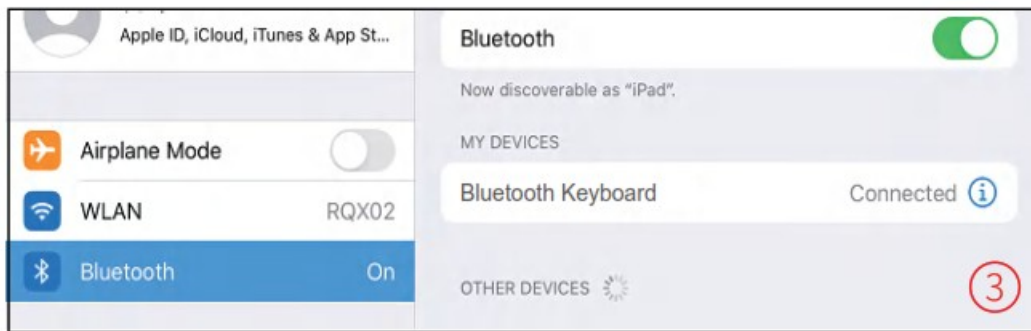
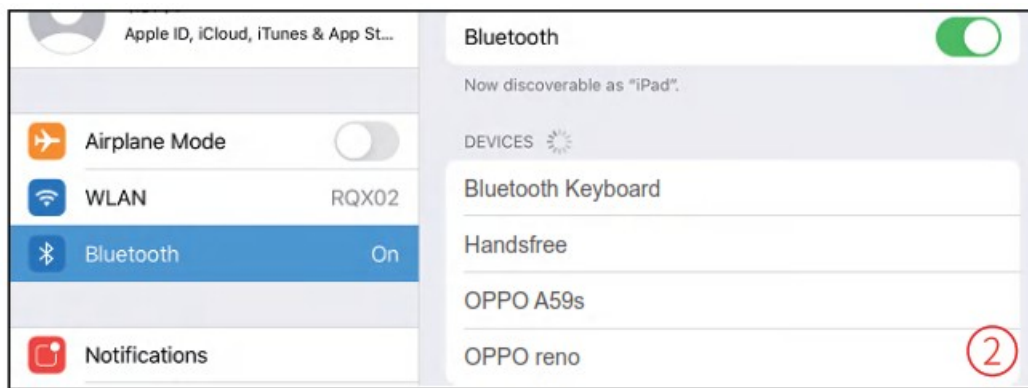
Pairing Instructions

The keyboard links to your tablet via a Bluetooth connection. The first time you use the keyboard, you must pair it with your tablet

Please to connect the keyboard with your tablet according to the right graphic instruction as below

1. Turn on the keyboard:

Push the power switch button to ON position to turn on the keyboard, then press and hold the "connect" button for 3 seconds until the WIFI blue light flashes.



2. On your tablet:

Make sure your tablet's Bluetooth feature is on. Select Settings > Bluetooth > On, select "Bluetooth Keyboard" from the Devices menu, and click it to Connect.

3. Select application system:

Note: After connection, the WIFI status light will turn off. Then you need to switch the keyboard to the corresponding tablet system.

After pairing for the first time, your device will connect to the keyboard automatically when opening the keyboard.

iOS System: Fn+iOS; Android System; Fn+Android;


















Windows System: Fn+Windows



For example:

conversion to IOS system

Function Keys

	Home/Esc		Previous Track		Function
	Search		Play/Pause		Command
	Select ALL		Next Track		Brightness- (Only for Backlit Keyboard)
	Copy		Volume-		Brightness+ (Only for Backlit Keyboard)
	Paste		Volume+		Shows/Hides the Virtual Keyboard (iOS system only)
	Cut		Lock Screen		

Optional (Only for Backlit Keyboard)

Backlight adjustment (optional):



Adjust three modes: press once to turn on the light, press twice to turn on the seven-color breathing light cycle mode, press three times to turn off the light



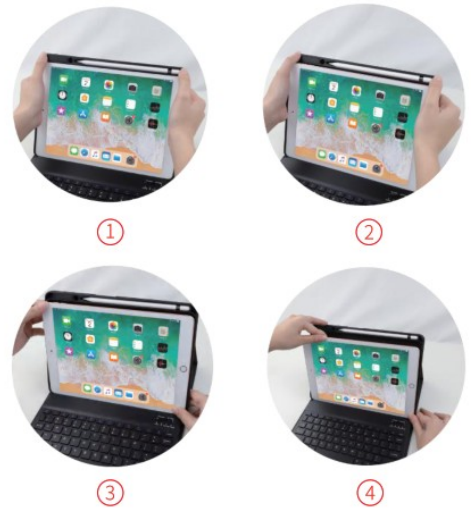
Adjusting colorful light colors

Installation and Removal

Installation: Open the protective case, make sure the edge of your iPad is aligned with the iPad holder and push down.

Removal:

1. Removing back protective piece. Hold tablet on both sides (picture) gently push back cover of the tablet with the thumb (back piece held in place by two tabs.)
2. Proceed to "peel" cover away from the tablet
3. Take the tablet out
4. Take the tablet upwards



Input Method Switching

IOS: Control+Space. Android: Control+Shift. Windows: Control+Shift.

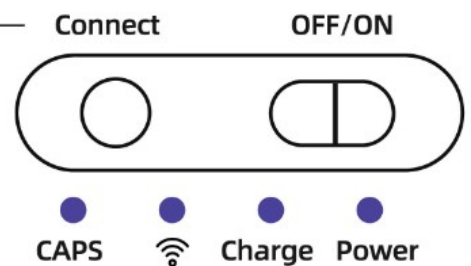
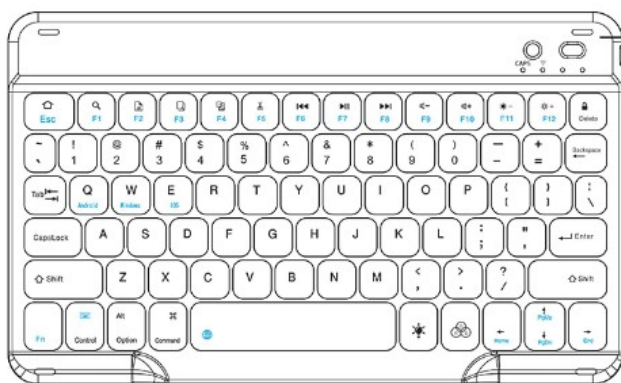
Indicator description

Power LED: When the keyboard is turned on, this LED will turn on as blue, then turn off automatically after 1-2Sec.

Charge LED: The Charge LED blinks red as the battery needs to be charged. The Charge LED will show a solid red light while the keyboard is charging, and it will go out when the keyboard is fully charged.

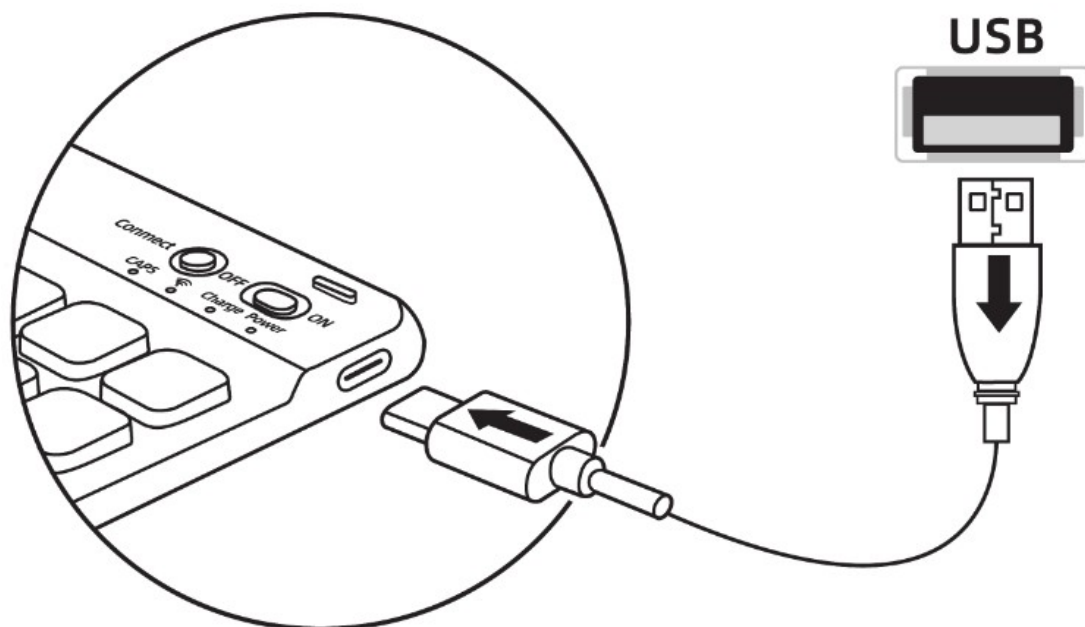
WIFI: The status light blinks blue to indicate that the keyboard is discoverable, ready for pairing with your tablet, and the WIFI LED goes out automatically after the connection done.

CAPS LED: When this LED is on as blue, which means the keyboard is locked in uppercase.



Charging Instructions

1. The first time using the keyboard, please charge the keyboard for at least 6 hours. In the future, when the keyboard run out of power, please charge it for at least 2 hours when charging.
2. The Charge LED blinks red as the battery needs to be charged.
The Charge LED will show a solid red light while the keyboard is charging. Charge the battery until the Charge LED light turns off.
3. Please connect the charging cable to the keyboard correctly as shown below:



Troubleshooting

1. What should I do if the Bluetooth keyboard fails to connect or fails to pair?

IOS System:

1. Turn off Bluetooth in the tablet settings, then turn off the tablet and keyboard;
2. Then turn on the tablet to start (the keyboard does not need to be turned on at this time);
3. On your tablet, check that Bluetooth is turned ON. Select Bluetooth, locate "Bluetooth Keyboard" in the Devices list, and remove it.
(Click the "i" symbol, and select "Forget this Device".);
4. Turn Bluetooth OFF, and then back on. "Bluetooth Keyboard" should NOT be displayed in the Devices list;
5. Push the power switch button to ON position to turn on the keyboard, then press and hold the "connect" button for 3 seconds until the WIFI blue light flashes. (then follow the instructions on the previous page "Pairing instructions" point 2 and 3).

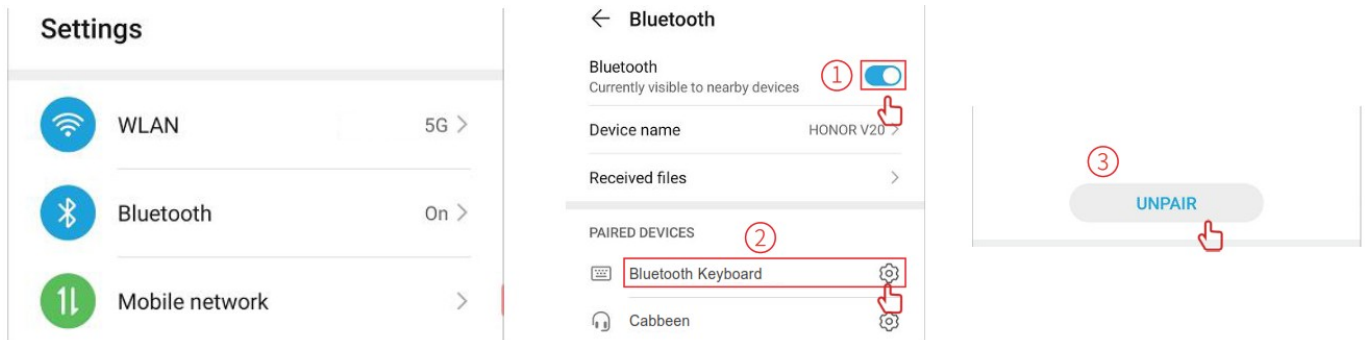


Android System:

1. Turn off Bluetooth in the tablet settings, then turn off the tablet and keyboard;

2. Then turn on the tablet to start (the keyboard does not need to be turned on at this time);
3. On your iPad, check that Bluetooth is turned ON. Select Bluetooth, locate “Bluetooth Keyboard” in the Devices list, and remove it.
(Click the “<os” symbol, and select “UNPAIR”.);
4. Turn Bluetooth OFF, and then back on. “Bluetooth Keyboard” should NOT be displayed in the Devices list;
5. Push the power switch button to ON position to turn on the keyboard, then press and hold the “connect” button for 3 seconds until the WIFI blue light flashes. (then follow the instructions on the previous page “Pairing instructions” point 2 and 3).

Note: Remember to convert the corresponding operating system after successful connection!



2. The keyboard does not work:

- Please make sure your tablet's Bluetooth function is enabled;
- Press any key to wake the keyboard from sleep mode;
- The keyboard should be within 10 meters from the tablet;
- Turn the keyboard off and then back on.
- Recharge the internal battery;

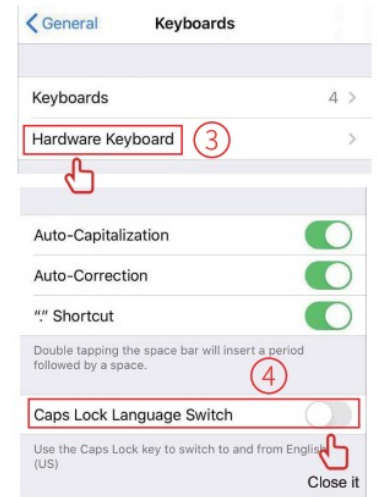
3. If the keyboard cannot be paired with the tablet; typing delay or continuous typing occurs during text input, please follow the steps below:

- Remove all Bluetooth devices from tablet Bluetooth options
- Turn off the Bluetooth option on your tablet
- Restart the tablet
- Keyboard and tablet are connected again

4. What if I cannot use the uppercase key?

Open Tablet Settings> General> Keyboard> Hardware Keyboard> Caps Lock Language Switch keyboard (turn it off just fine)

Note: Please make sure that the Bluetooth keyboard and tablet have been paired successfully before performing the following operations.



Specifications

Frequency range	2.4GHz band.
Working voltage	3.7VDC
Working current	<5mA
Standby current	1.0mA
Sleep current	<0.25mA
Transmission distance	up to 10 meters
Standby time	30days
Charge time	2 hours
Uninterrupted work time (without without turning ON the backlight)	40-60 hours

Usage Tips

- The keyboard enters sleep mode automatically if not used for 15 minutes in the typing position.
Press any key to wake it and wait for 3 seconds.
- Clean the keyboard by lightly wiping it with a slightly damp cloth.
- Keep the product away from oil, chemicals, and liquids.
- Do not drop the product, bump it against hard surfaces, or dismantle it.
- When not in use, turn off the keyboard to conserve battery power.

Question & Answer

What if the Bluetooth Keyboard arrived missing charging cable or keys are fell out?

My iPad doesn't fit into the slot?

Make sure you are using your keyboard cover with an iPad only, and not with any other covers or thick glass

protectors.

What are the functions of Delete and Backspace?


Delete deletes the cursor backward and Backspace deletes forwards.



WIRELESS KEYBOARD CASE

The manufacturer reserves the right to make changes to the product, and update this manual at any time.

Documents / Resources

 <p>WIRELESS KEYBOARD CASE USER MANUAL</p>	<p>BOBOLEE 2020 Case with Magnetically Detachable Wireless Keyboard [pdf] User Manual 2020 Case with Magnetically Detachable Wireless Keyboard, 2020, Case with Magnetically Detachable Wireless Keyboard, Magnetically Detachable Wireless Keyboard, Detachable Wireless Keyboard, Wireless Keyboard, Keyboard</p>
----------------------------------------------------------------------------------------------------------------------------------	-----------------------------------------------------------------------------------------------------------------------------------------------------------------------------------------------------------------------------------------------------------------------------------------------------------------------------------------

References

- [User Manual](#)