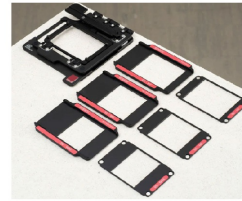


BOBACH

SP 3000 Multi
Mask System



BOBACH SP 3000 Multi Mask System Installation Guide

[Home](#) » [BOBACH](#) » BOBACH SP 3000 Multi Mask System Installation Guide 

Contents

- [1 BOBACH SP 3000 Multi Mask System](#)
- [2 Installation Guide for the Multi-Mask System](#)
- [3 Documents / Resources](#)
 - [3.1 References](#)

BOBACH

BOBACH SP 3000 Multi Mask System



Installation Guide for the Multi-Mask System

What is the BOBACH Multi Mask System?

The Multi Mask System replaces the insert masks for the Fujifilm Manual Carrier (MFC 10AY)



The original Fujifilm format masks require a separate mask for each format.

In contrast, the BOBACH Multi Mask System is modular and consists of a base mask in which the formats can be changed by simply exchanging the insert masks. Additionally, it is possible to perform full-frame scans in addition to conventional scans, as all insert masks for the BOBACH Multi Mask System have a larger cutout and thus make it possible to scan including the border of the frame.

In addition to 120 medium format film, there are also insert masks for various 135 formats such as Xpan, 135XL including sprockets, or even less common formats such as 110 pocket film and 126 film.



BOBACH - 135 - 35mm Mask +Sprockets

All inlay masks are correctly recognized by the scanner. For example, the 6×6 inlay is identified by the scanner as a 6×6 mask. Custom formats like 135XL or 126 are enabled through a small workaround. For instance, the 135XL mask is recognized as „6×4.5 vertical.

Custom masks are also possible upon request.

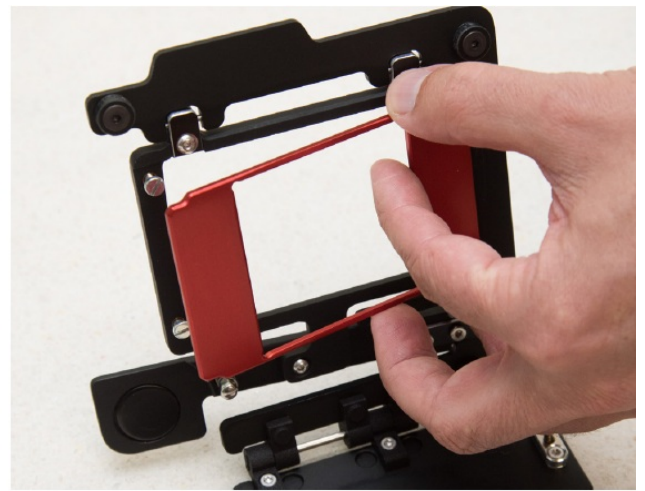
How does the BOBACH Multi Mask System work?

To use the BOBACH Multi Mask System, you need the base system and at least one insert mask.

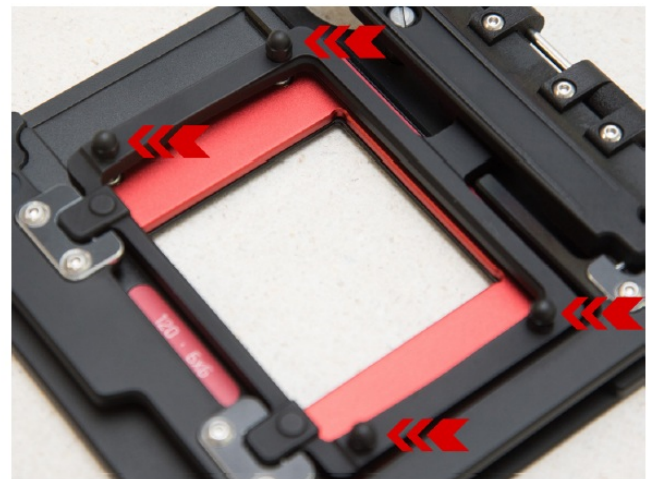
The insert masks always consist of a black lower mask and a red pressure mask.

The lower mask is simply inserted into the base system.

The pressure mask is attached to the pressure frame of the base system via four magnets.



The distance between the lower mask and the pressure mask is calibrated during assembly. However, if the distance needs to be adjusted, this is easily possible via the four screws on the pressure frame, these four screws must be fixed with the four black cap nuts after adjustment. The film should be able to move easily and without contact with the mask when open.



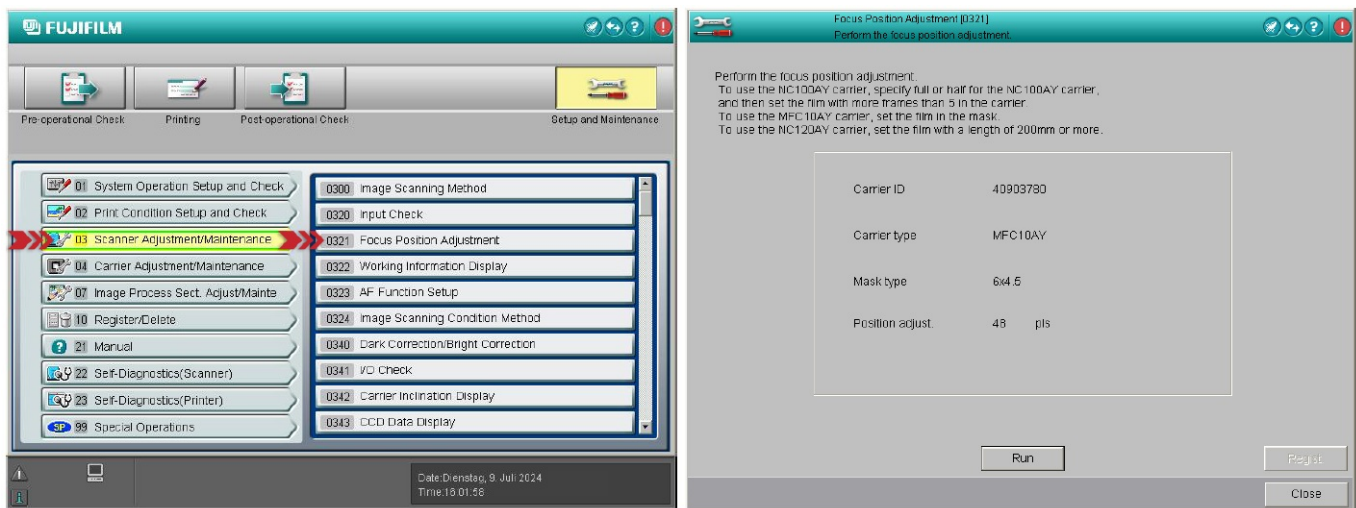
IMPORTANT

Each insert mask requires a „Focus Position Adjustment“ to be done before it can be used for the first time. This step is only necessary once and does not need to be repeated.

Open the menu „03 Scanner Adjustment/Maintenance“ > „0321 Focus Position Adjustment.“ click „Run.“

You will now be prompted to insert a film strip; insert a strip (color negative).

Make sure the emulsion side is facing down (the labeling must be correctly readable from above). The film strip should be properly exposed and undamaged. Then click „Regist.“ and „Close.“



To scan with the BOBACH Multi Mask System, start the scanner as usual with the calibration mask. Click on „Printing“. Wait until all checks are completed and the scan screen is visible.

Now you can install the Multi Mask system in the carrier The scanner now recognizes the inserted format, the corresponding „Print size“ must be selected (e.g. 6×7 or 6×9)

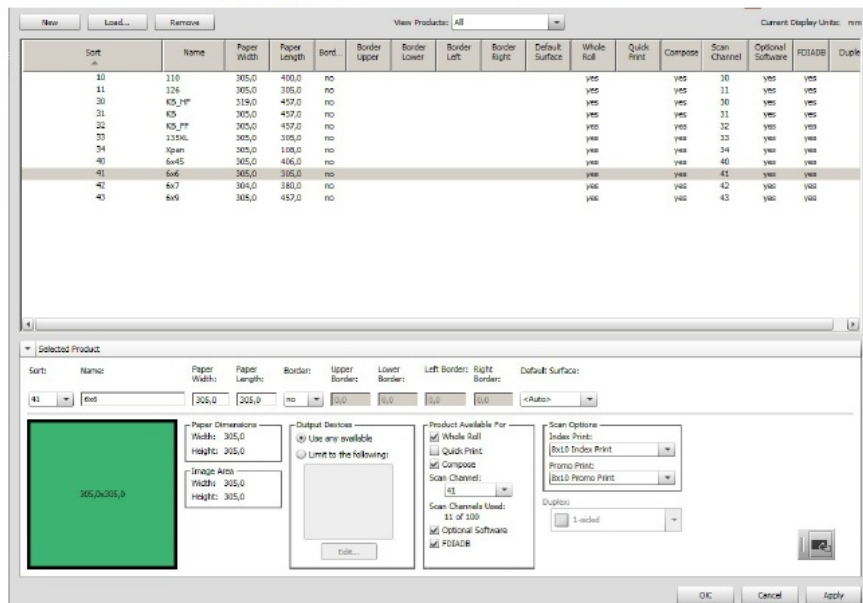
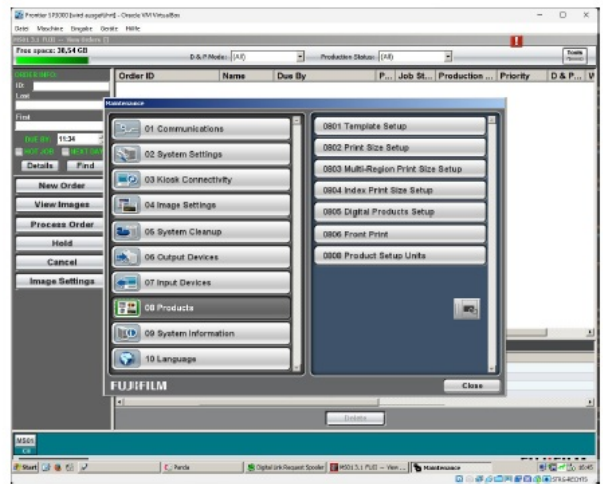
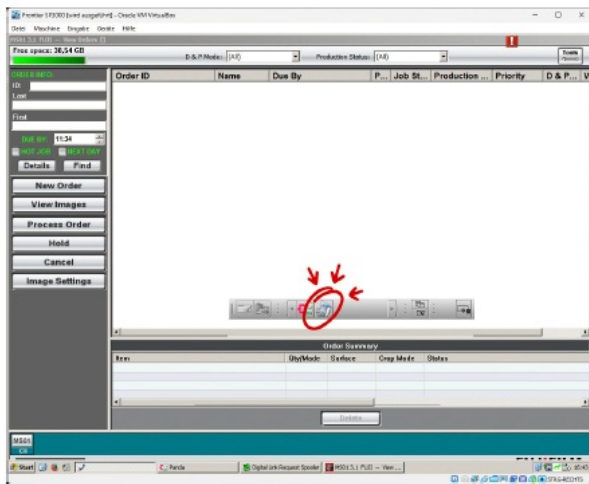
The Multi Mask system is manufactured with very small tolerances to guarantee a firm fit, please ensure that the system is seated correctly in the carrier when inserting it. From here, the system works exactly like the original masks from Fujifilm.

The frame is manually positioned via the preview and the scan is started using the Start/Enter key. The mask closes and the film is held flat.

Creating new formats (Software MS01)

A format/template must be created for each insert mask. Fujifilm also calls these formats „Print Size“ To do this, open the Maintenance Menu on the frontend PC (or the virtual machine).

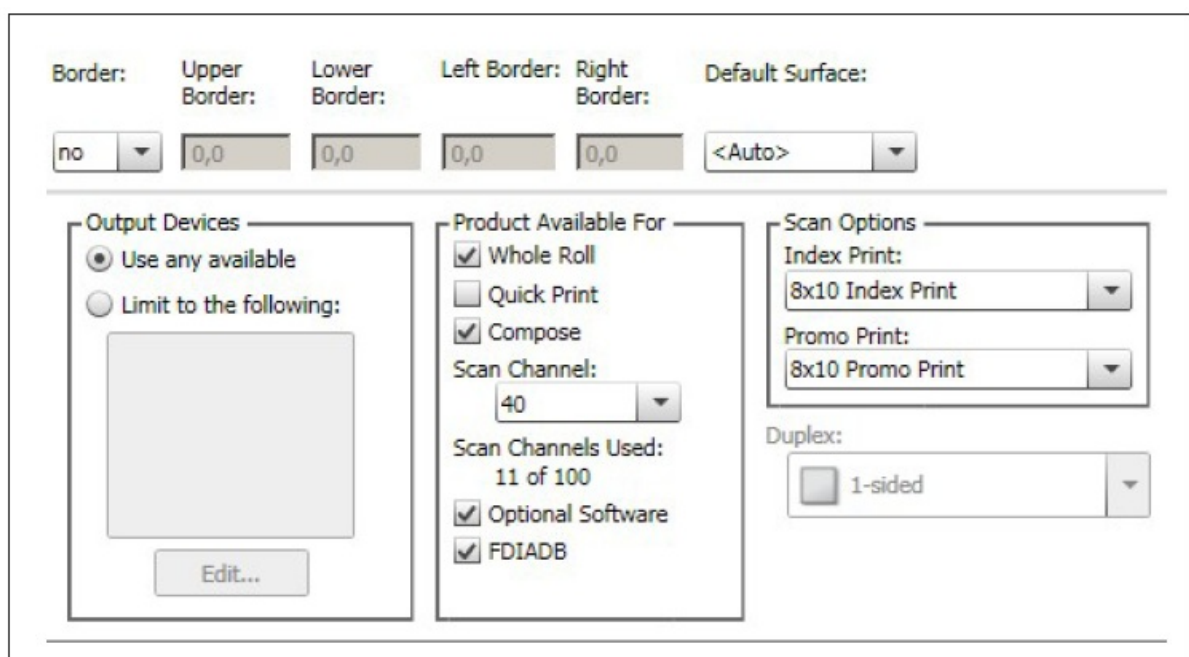
Then „08 Products“ and „0802 Print Size Setup“



Here an entry must be created for each format, the settings are always identical, only the name, the „scan channel“ and the value „sort“ differ, but can be chosen freely.

It is recommended to delete all „Print size“ entries that are not needed.

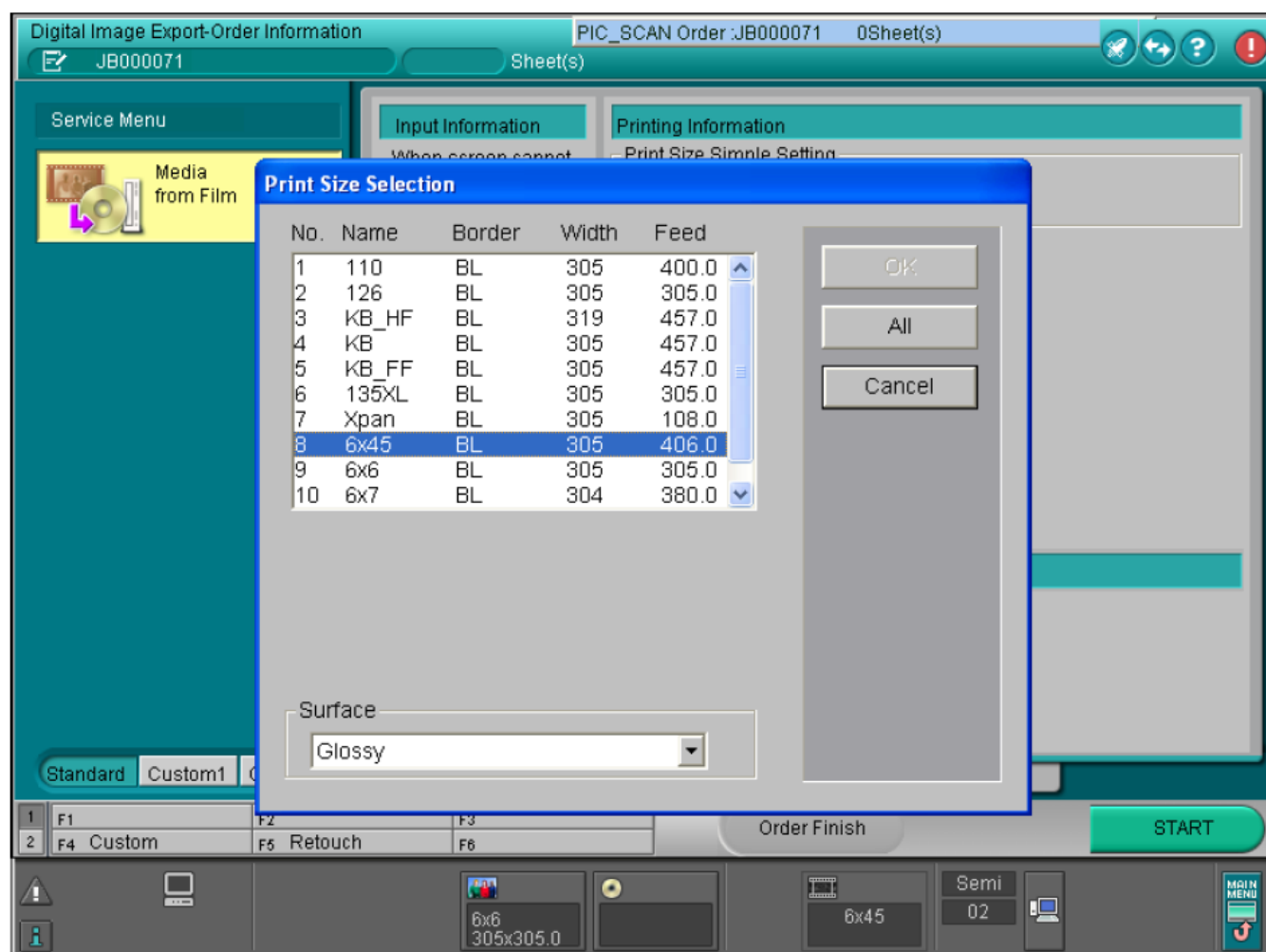
If you only use the Fujifilm SP 3000 for scanning, the settings from the following image can be adopted:



The formats can be created as follows, but may need to be adjusted to your own requirements:

FORMAT	WIDTH	LENGHT	MAG. (Rate%)
110	305	400	96%
126	305	305	
135 (35mm)	305	453	
135XL (35mm)	305	305	110%
XPan (35mm)	305	108	
6×4,5	305	406	
6×6	305	305	
6×7	304	380	
6×8	305	406	
6×9	305	457	

IMPORTANT To use the newly created or modified formats on the SP3000 scanner, you'll need to restart the scanner.

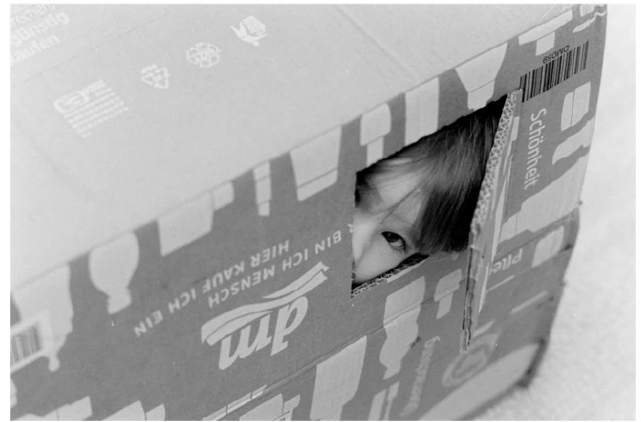


Full-Frame scanning

Full-frame scans refer to a scan that captures the entire negative, including the border of the frame. The Frontier SP 3000 was not originally designed to perform this type of scan. To avoid clipping and automate the process as much as possible, scans with a scanner in the original configuration are heavily cropped. Fuji's original masks have a very small cutout, making it impossible to scan the entire frame. However, this is possible with the BOBACH Multi Mask System.



Full-Frame scan with BOBACH mask



Regular Scan

How to Set up full frame scans

Open the menu „02 Print Condition Setup and Check“ -> „0241 Fine Adjustment of the Print Mag. Setting.“

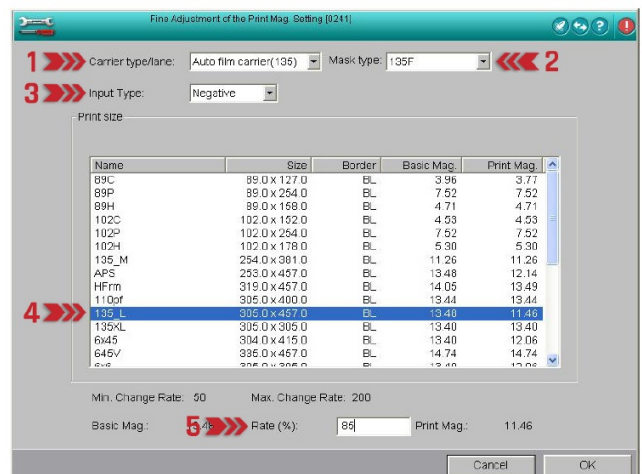
Here, the value „Magnification“ is set, which determines how much border is visible around the scan.

A lower value creates more border, a higher value crops the image.

A good starting point is 90%, but test scans should be done to find the appropriate value.

IMPORTANT Please ensure the settings are made in the correct order.

1. Carrier type/lane
2. Mask type
3. Input Type
4. Print size
5. Rate (%)





Multi-Mask System
Fujitsu Edition SP 3000 - 1993 1207



[BOBACH SP 3000 Multi Mask System](#) [pdf] Installation Guide

SP 3000 Multi Mask System, SP 3000, Multi Mask System, Mask System, System

References

- [User Manual](#)

Manuals+, Privacy Policy

This website is an independent publication and is neither affiliated with nor endorsed by any of the trademark owners. The "Bluetooth®" word mark and logos are registered trademarks owned by Bluetooth SIG, Inc. The "Wi-Fi®" word mark and logos are registered trademarks owned by the Wi-Fi Alliance. Any use of these marks on this website does not imply any affiliation with or endorsement.