



## boAt Xtend Call Plus Smartwatch User Manual

[Home](#) » [Boat](#) » boAt Xtend Call Plus Smartwatch User Manual 



### Contents

- [1 Xtend Call Plus Smartwatch](#)
- [2 CHARGING THE WATCH](#)
- [3 CONNECTING TO THE APP](#)
- [4 SETTINGS](#)
- [5 GENERAL](#)
- [6 PRODUCT PARAMETERS](#)
- [7 MAINTENANCE](#)
- [8 FAQ](#)
- [9 SAFETY & PRODUCT INFORMATION](#)
- [10 Documents / Resources](#)

### Xtend Call Plus Smartwatch

#### STORM CONNECT PLUS

Thank you for choosing the boAt Storm Connect Plus as your fitness transformation companion. Allow this manual to guide you through the functioning of your smartwatch. Please read it thoroughly before using it for a smooth sail. You may refer to these instructions for later use as well.



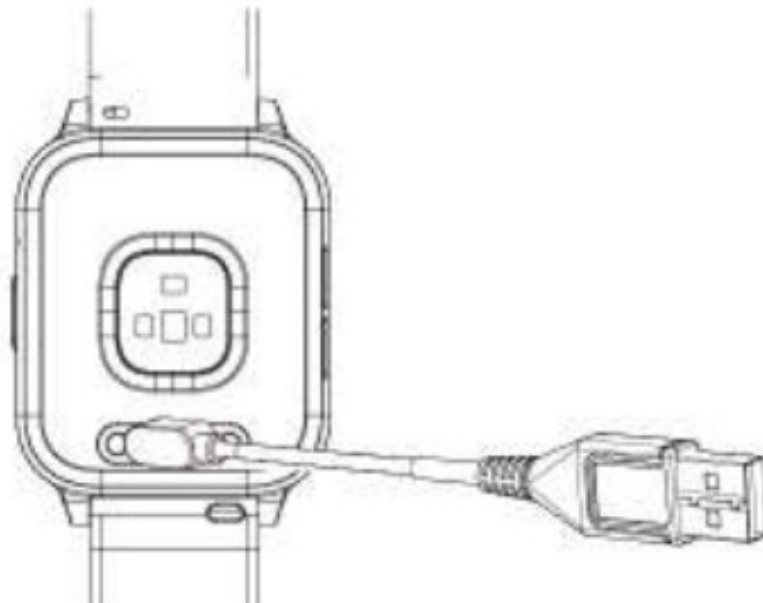
#### **PACKAGE CONTAINS:**

- boAt Storm Connect Plus x1
- US\$ magnetic charging cable x1
- User Manual x1
- Warranty Card x1

#### **CHARGING THE WATCH**

The smartwatch must be charged before initial use. It takes up to 2 hours to be fully charged. Connect and charge the watch with the image below as a reference, using a 5V/2A adapter.

**TURNING THE WATCH ON/OFF** To turn the watch on/off, long-press the side button for 3-5 seconds. You can wake up the screen by lifting your wrist.



To turn the watch on/off, long-press the side button for 3-5 seconds. You can wake up the screen by lifting your wrist.

#### **TURNING THE WATCH ON/OFF**



## CONNECTING TO THE APP

1. Download the boAt Crest app on your phone.

Available on both App Store (05 120 and above) and Google Play Store (Android 7.0 and above)

or

**Scan [QR CODE] (Also available on the watch)**



<http://c0ve.net/boat1>

2. Connect the device with the boAt Crest app; ensure that the phone's Bluetooth as well as the GPS functionalities are turned on.
3. Select Storm Connect Plus on the home screen of the app and Click pair to connect.
4. Once connected, you will get an alert to connect with SCONNECTPLUSET, click pair if need to receive or make calls from the watch.
5. To use all features of your Storm Connect Plus seamlessly, tap on 'yes' to the 'connection' and 'grant access' system prompt.
6. Disable battery optimization



**Note:** To ensure connectivity throughout your journey, make sure the app is allowed to run in the background of

your phone at all times.

## Data Synchronization

- Open the app on your phone.
- Make sure your Storm Connect Plus is connected to the app.
- Synchronization will start automatically once you enter the app interface.

### Note:

Synchronize data at least once a day to avoid data loss in the watch.

## NAVIGATING THROUGH THE FUNCTIONS

SHORT PRESS THE SIDE BUTTON FOR MAIN MENU

### Activity

Tracker Click on this to check your daily activity data like step count calorie. active minutes. no. of times you were standing.



### Phone



To use the BT Calling feature, open the boAt Crest app and pair the watch.

Once paired you will get the pop-up on the app home screen to connect with Phones Bluetooth.

Click on – “pair” to connect with phone’s Bluetooth.

Alternatively, you can go to phone’s Bluetooth settings and pair “SCONNECTPLUSBT” to start the calling feature on your watch.

**\*Note:** Enable call alerts from the setting to get calls on the watch

Up to 10 contacts can be saved in the phonebook.

Call history will show the latest call details.

Use a dialer to dial any number

### Spo2 Monitor



Wear the watch on your wrist. then click on the icon to start measurements. You can also view the data on the app

**Note:** Measurements are for reference only and not for medical purposes.

### Workout



Choose from multiple sports mode like outdoor run. outdoor walk. indoor walk, long lump, indoor run, strength training, football. basketball, table tennis. badminton, indoor cycle, elliptical, yoga. cricket, mountaineering, golf. Tap on any sport mode to start the activity, you can pre-set your goal as well for each activity. Press the side button to pause or stop the activity. If the activity is less than 3 mins, it will not be recorded.

Sync your smartwatch to the app to get the detailed analysis

### Heart Rate Monitor



Wear the watch on your wrist, then click on the icon to start measurements. You can also view the data on the app.

**Note:** Measurements are for reference only and not for medical purposes.

### Sleep Monitor



Tap on the icon to review the sleep data of the previous night.

Once the asleep criteria are met, your smartwatch will start recording from 8 pm at night to 10 am in the morning the next day.

Once you lie down and watch detects no movement for 30 minutes. it will start recording, and will stop recording if it detects excessive movement.

You can check the data on the app only after the awake criteria is met.

You can also track sleep scores on the boAt Crest app.

**Note:**

- For accurate sleep data recording, the asleep criteria have to be met which includes limited movement, wrist positions and angles, and more.
- The awake criteria will be met only after it records some noticeable movement.

**Workout records**

You can view the records of your workouts here

**Breathe**

Click on the breath training icon to regulate your breathing With the instructions given to relax.

**Alarm**

Tap on this to set an alarm on your watch.

**Stress monitoring**

Click this option to start the stress monitoring. Make sure you wear your watch on your wrist properly to get the accurate results.

Analysis of the measurement is

Relax: 1-29

Normal: 30-59

Medium: 60-79

High: 80-100

**Note:** Measurements are for reference only and not for medical purposes.

### **Event reminders**



You can create event reminders from the app and get the alerts on the watch.

### **Women Health**



Enable and set the details on the boAt crest app and get the alerts of your period and ovulation dates on the watch.

### **Weather**



Connect with the boAt crest app to get daily weather updates on the watch.

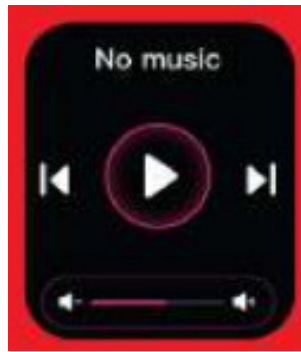
### **TOOLS**

#### **Stopwatch**



Click on this to start the stopwatch on your watch

#### **Music Player**



Tap on the remote music control icon on your watch to play music from your phone.

**Note:** Some apps with different protocols might not work.

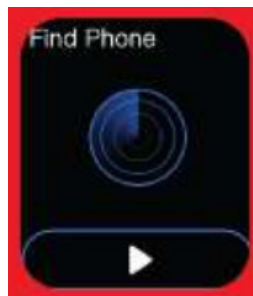
### Camera Control Mode



Tap on the remote camera icon on your smartwatch to take a photo from your phone.

\* **Note:** Turn the camera on from your phone to use this feature.

### Find My Phone



Tap on this icon to find your phone. Once enabled, your phone will start ringing and vibrating. Tap again to stop it.

**Note:** Your smartwatch should be connected to your phone via Bluetooth and within its range for this feature to work.

### Timer



Tap on this to turn on the timer.

### Flashlight



Tap on this to turn your dial into a flashlight.



## SETTINGS

### Watch Faces



Tap on this icon to change your watch face.

### Display



Tap on this to adjust the brightness, set the screen on time and enable wake gesture.

### Language



Tap on this icon to change the language.

### Sound and Vibration



Tap on this to adjust the watch volume, enable/disable fingtones, adjust vibration levels.

### Workout



Enable auto workout mode from here.

### **Do Not Disturb**



Tap on this to disable all notifications except alarms.

## **GENERAL**

### **View**



Change the menu style to grid or list view from here

### **Restart**



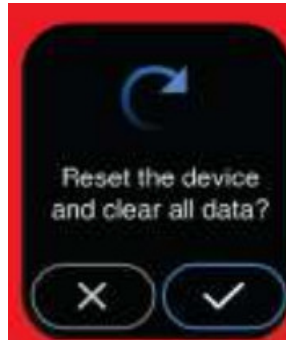
Tap on this to restart your watch.

### **Power off**



Tap on this to switch your watch off.

### Factory Reset



Tap on this to reset watch data.

**\*Note:** All data will be erased if watch is reset

### About



Shows the device details

### SWIPE DOWN FOR SHORTCUT MENU



You can access DMD. Brightness. Settings, Battery saving mode etc.

### SWIPE LEFT OR RIGHT TO ACCESS ALL DATA



You can access daily activity, sleep, heart rate monitor, weather music player from here.

## SWIPE UP TO ACCESS THE NOTIFICATIONS



You can check all the notifications from here. Click delete icon to delete all the notification.

## PRODUCT PARAMETERS

Model	boAt Storm Connect Plus
Screen type	4.85 cm (1.91") Big HD Display
Battery capacity	300 mAh
Net weight	35g
Bluetooth version	V5.3
Working temperature	0-40t
Charging time	up to 2 hours
Working time	up to 2 days on with BT calling. up to 7 days on normal mode
Maximum transmit power	2.5dMB
Frequency band	2402Mhz-2480Mhz

## MAINTENANCE

Regularly clean your wrist and the strap of the smartwatch, especially after sweating during exercise or being exposed to substances such as soap or detergent, which may get stuck on the other end of the product.

Do not wash the strap with a household cleanser. Please use soap less detergent, rinse thoroughly and wipe with a piece of soft towel or napkin. For spots or stains that are not easy to remove, scrub the area with rubbing alcohol and then follow the above procedure.

## FAQ

Search for the app to connect keeps failing

1. Keep the boAt Crest app updated to the latest version. 2. Close all the programs on the watch -> Stop and restart Bluetooth and GPS - Connect again. 3. Check and enable notification functions of your phone and keep the phone and watch in close contact. Note: Make sure your phone system meets Android 7.0 and above and iOS 12.0 and above

My Watch Storm Connect Plus is receiving no alerts, texts, or phone calls

Make sure smart reminders on the app are on and synced to the Storm Connect Plus. Also make sure your notification center of the phone is displaying messages. Only then will your smartwatch also display those notifications. Make sure app is running in the background and battery optimization feature on the phone is disabled.

My Bluetooth keeps getting disconnected

1. Make sure there is not more than 7m distance between Bluetooth on the phone and the watch. 2. There is no obstacle in between the watch and the phone. 3. Make sure the app is running in background.

Which functions of the Storm Connect Plus need Bluetooth to work?

Call & Text Notifications, Find My Phone, music control, camera control, weather forecast, cloud and custom watch faces and Bluetooth calling need Bluetooth connectivity to work.

Will It be okay to take a bath wearing the Storm Connect Plus?

The IP68 water resistance will only work under the following conditions: 1. Maximum depth of water 1.5m 2. Maximum time for exposure to water: 10 minutes The watch isn't suitable for hot baths, hot springs, saunas, snorkeling, diving, water skiing and other wading or deep-water activities with high-speed water flow.

## **SAFETY & PRODUCT INFORMATION**

### **Battery**

Do not disassemble, bore or damage the battery.

Do not disassemble the built in batteries of non-replaceable battery devices.

Do not use sharp objects to remove the battery.

### **HEALTH WARNING**

- If you are wearing a pacemaker or other implanted electronic devices, please consult your doctor before using the heart rate monitor of the watch. The optical heart rate sensor will glow green. If you suffer from epilepsy or are sensitive to blinking light sources, please consult your physician before wearing this device.
- The device tracks your daily activities through sensors. This data is Intended to tell you about your daily activities such as steps, sleep, distance, heart rate and calories, but may not be completely accurate.
- The device accessories, heart rate sensor, oxygen level monitor, and other relevant data is designed for fitness and not for medical purposes. They are not applicable to the diagnosis, monitoring, treatment or prevention of any diseases or symptoms. The heart rate and blood pressure data is for reference only. We're not responsible for any deviation in data.
- Avoid wearing the watch too tightly. Make sure you keep your skin dry – the area that comes in contact with the watch. If symptoms such as redness or swelling appear on your skin, immediately stop using the watch and consult the doctor

## **THINGS TO KEEP IN MIND**

- Sync data everyday days to avoid data loss.
- Water Resistance will not work for seawater, acidic and alkaline solutions, chemical reagents and other

corrosive liquid. The damage or defects caused by misuse or improper use are not covered by the warranty.

- Sports modes support up to 6 hours of exercise at a time.
- Avoid wearing the watch too tight In daily use. Keep the parts of skin touching the watch dry.
- Keep your arm still while measuring data for accurate measurement.

**Disclaimer:** This product is an electronic monitoring product and is not intended as a medical reference. We reserve the right to modify or improve any of the functions described in this manual without any prior notice. At the same time, we hold the right to continuously update the product content.

## CAUTION

RISK OF EXPLOSION IF BATTERY IS REPLACED BY AN INCORRECT SUBSTITUTE.

DISPOSE OF USED BATTERIES ACCORDING TO THE INSTRUCTIONS.

Old electrical appliances must not be disposed of together with the residual waste. but have to be disposed of separately. The disposal at the communal collecting point via private persons is for free. The owner of old appliances is responsible to bring the appliances to these collecting points or to similar collection points. With this little personal effort you contribute to recycle valuable raw materials and treatment of toxic substances.



## Documents / Resources



[boAt Xtend Call Plus Smartwatch](#) [pdf] User Manual  
Xtend Call Plus, Xtend Call Plus Smartwatch, Smartwatch