



Bo Lian BW10 USB WiFi Repeater Installation Guide

[Home](#) » [Bo Lian](#) » Bo Lian BW10 USB WiFi Repeater Installation Guide 

Bo Lian BW10 USB WiFi Repeater Installation Guide



Contents

- 1 LED Explanation
- 2 Button Explanation
- 3 Working mode Diagram
- 4 Quick Installation Guide
- 5 Wi-Fi Repeater mode setup
- 6 FAQ (Frequently Asked Questions)
- 7 Q1: What should I do if I cannot access the Repeater's web management page?
- 8 Q2: Why does the wireless transmission rate speed down, when the wireless signal is stronger after repeated by the Repeater?
- 9 Q3: Why the devices connected to the Repeater cannot get an IP address from the Repeater and cannot access the Internet?
 - 9.1 AP mode Setting
 - 9.2 Warning Statement
 - 9.3 Documents / Resources
 - 9.3.1 References
 - 9.4 Related Posts

LED Explanation



2. 4 G

Blinking Green: The extender wireless network is working.



Blinking Blue: WPS connection is in process.

Blinking Green: The extender is connected to the Internet



Solid orange: The extender is connected to the router, but is too far away from the router.

Solid green: The extender is connected to the router, and is in a good location.



Blinking green: The Extender wired network is active connection.

Button Explanation



WPS Button: WPS connection

RESET

Reset Button : With the extender powered on, Press the Reset button for 10 second. The extender will reboot.

1. **Note:** This equipment has been tested and found to comply with the limits for a Class B digital device, pursuant to part 15 of the FCC Rules. These limits are designed to provide reasonable protection against harmful interference in a residential installation. This equipment generates, uses and can radiate radio frequency energy and, if not installed and used in accordance with the instructions, may cause harmful interference to radio communications. However, there is no guarantee that interference will not occur in a particular installation. If this equipment does cause harmful interference to radio or television reception, which can be determined by

turning the equipment off and on, the user is encouraged to try to

Important: Change or modifications not expressly approved by the manufacturer responsible for compliance could void the user's authority to operate the equipment.

Working mode Diagram

Note: If you need to connect the network cable, please connect the network cable after the configuration is completed.

Repeater Mode: As a wireless signal extender

A. Extend your Wi-Fi signal without using any cables to reduce wiring troubles.

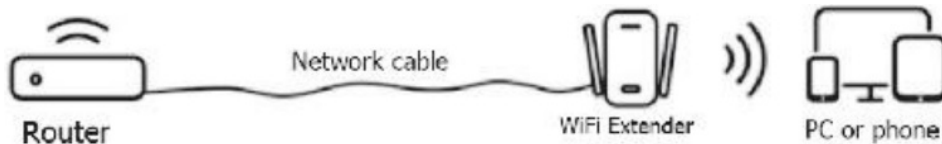


B. Extend your Wi-Fi signal with a cable, connect your device and extender stably.



AP Mode: As a wired signal extender (access point)

Get better WiFi speed by connecting the router and the extender with network cable in the poor WiFi signal area.



Quick Installation Guide

'When the machine work nor mall,use the mobile phone to search and

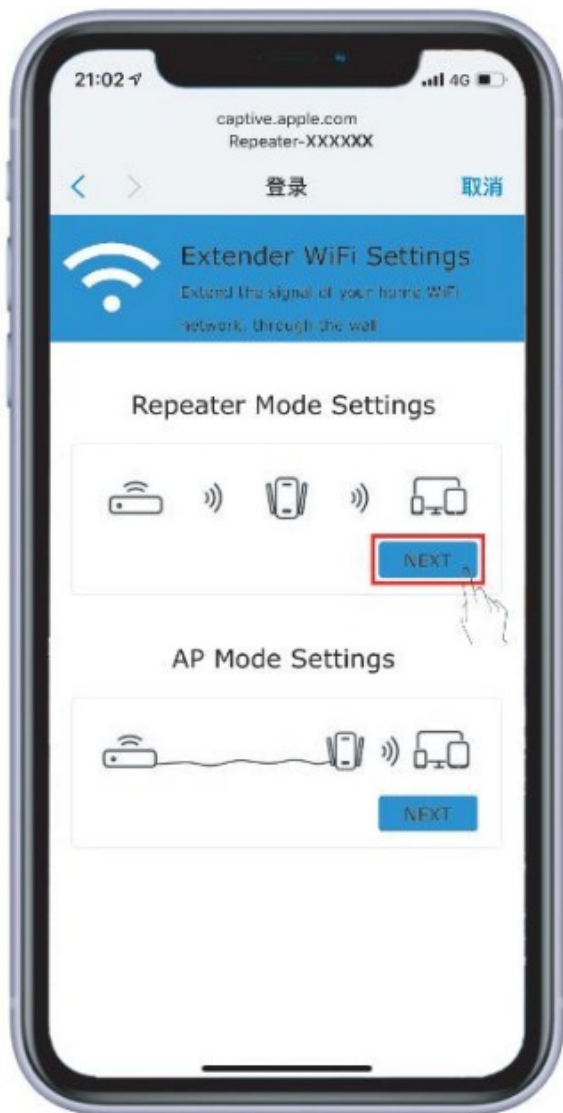
When the machine work normally, use the mobile phone to search and connect to Repeater-xxxxxx (xxxx is the last 6 numbers of the repeater MAC address)

Note: If the mobile phone does not automatically jump to setting page after connecting, please click "forget" the wifi name that has been connected on the mobile in wifi manage, turn off the wifi and then reopen the wifi to search it, or input 192.168.11.1".



Wi-Fi Repeater mode setup

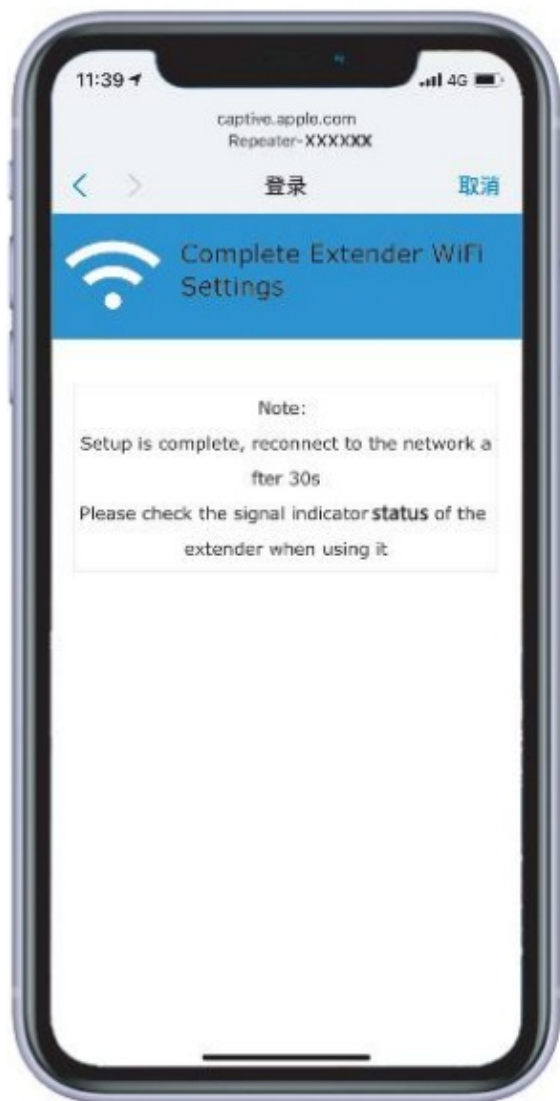
Step: Click repeater mods to enter the network search page.



Step 3 : Click the “Finish” button to complete the AP mode configuration.



Step 4 : Complete AP mode setting.



FAQ (Frequently Asked Questions)

Q1: What should I do if I cannot access the Repeater's web management page?

A1: Make sure your computer is connected to the extended network A2; Make sure your computer is set to obtain an IP address automatically. A3 If the Repeater has connected to the router, you should go to your router's DHCP client list to obtain the Repeater's current IP address. A4; Reset the Repeater.

A4; Reset the Repeater. Q2: Why does the wireless transmission rate speed down, when the wireless signal is stronger after repeated by the Repeater?

A1 In compliance with the wireless transmission protocol, all the Repeater devices are set to work in half-duplex instead of full-duplex mode. In other words, the Repeater has to process one-way communication between your root Wireless router (or AP) and the terminal clients; so the transmission time will be double-increased, while the speed will be decreased. Recommends that you connect to the extender when your home network connection is poor, or when you want a larger wireless coverage to eliminate "dead zones"

Q3: Why the devices connected to the Repeater cannot get an IP address from the Repeater and cannot access the Internet?

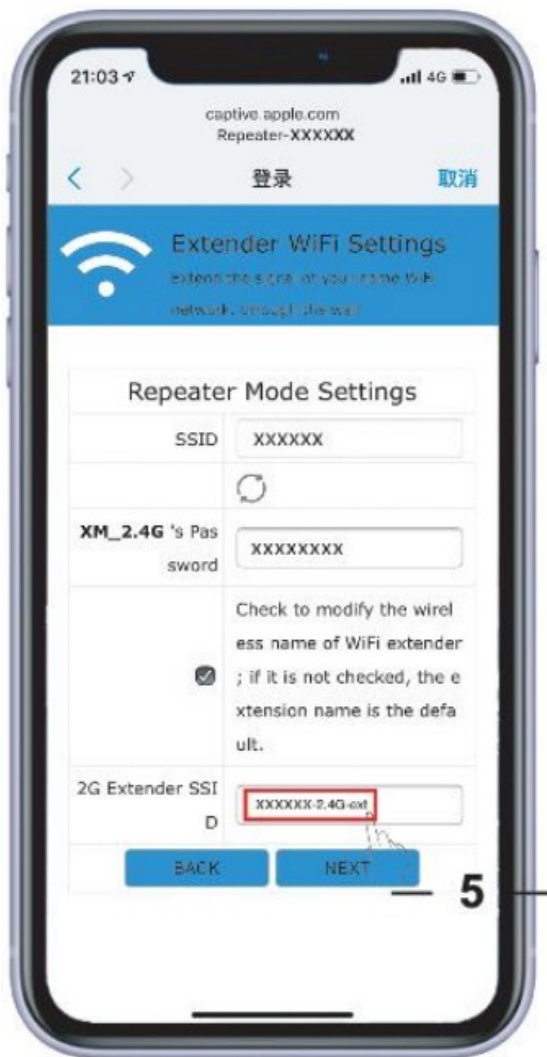
A1: Maybe you enabled a wireless MAC filter, wireless access control, or access control list (ACL) on your router.

To solve this problem, please log into your router and disable the MAG filter, wireless access control or AL A2; Maybe the Repeater has not been successfully connected to your router, please reset the Repeater and Reconfiguration A3: Maybe the IP address of the router is occupied or the wireless device connected by the router has reached the limit. please reboot your router, then reset the Repeater and Reconfiguration

Step 2 : Select the wireless signal you want to expand, if it is a hidden network, you need to add it manually.



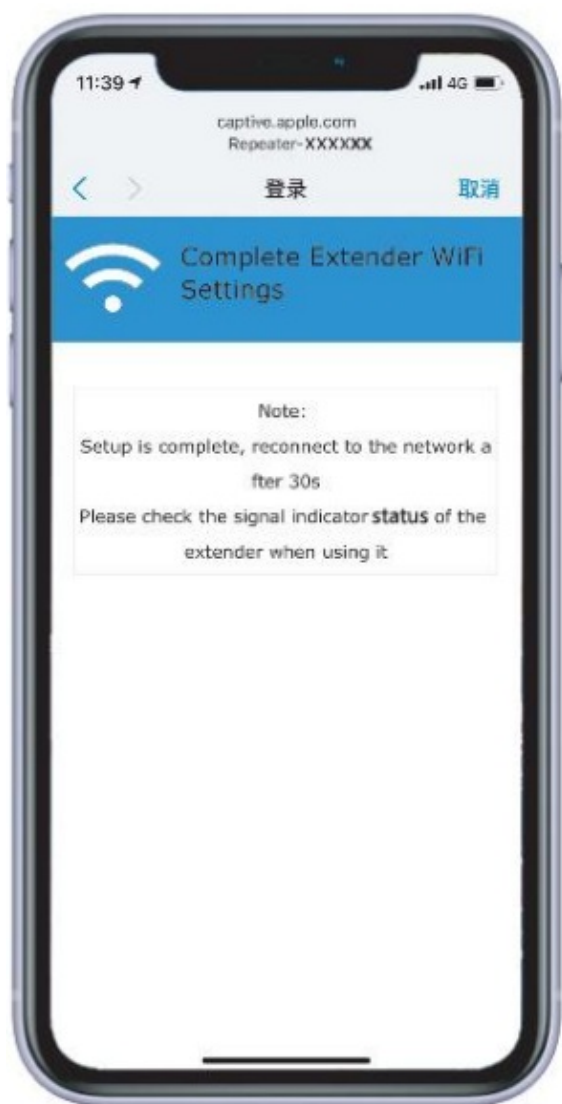
Step 3 : Enter your router connection password and click "NEXT". If you don't want the same name as your router, please choose and input the new name.



Step 4 : Click the “Finish” button to complete the relay mode configuration (The extended WiFi’s password is the same as the routers’ by default)



Step 5 : Complete Repeater Mode setting.



AP mode Setting

Step 1 : Click to Select “AP” mode to enter the setting page.



Step 2 : Set the wireless name and password with more than 8 digits (the wireless name and password can be set according to personal preference).



Warning Statement

This device complies with part 15 of the FCC Rules. Operation is subject to the following two conditions: (1) This device may not cause harmful interference, and (2) this device must accept any interference received, including interference that may cause undesired operation.

Any Changes or modifications not expressly approved by the party responsible for compliance could void the user's authority to operate the equipment.

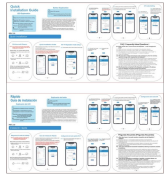
Note: This equipment has been tested and found to comply with the limits for a Class B digital device, pursuant to part 15 of the FCC Rules. These limits are designed to provide reasonable protection against harmful interference in a residential installation.

This equipment generates uses and can radiate radio frequency energy and, if not installed and used in accordance with the instructions, may cause harmful interference to radio communications. However, there is no guarantee that interference will not occur in a particular installation. If this equipment does cause harmful interference to radio or television reception, which can be determined by turning the equipment off and on, the user is encouraged to try to correct the interference by one or more of the following measures:

- Reorient or relocate the receiving antenna.
- Increase the separation between the equipment and receiver.
- Connect the equipment into an outlet on a circuit different from that to which the receiver is connected.
- Consult the dealer or an experienced radio/TV technician for help.

This equipment complies with FCC radiation exposure limits set forth for an uncontrolled environment. This equipment should be installed and operated with minimum distance 20cm between the radiator & your body.

Documents / Resources

	<p>Bo Lian BW10 USB WiFi Repeater [pdf] Installation Guide 2A48T-BW10, 2A48TBW10, bw10, BW10 USB WiFi Repeater, BW10, BW10 WiFi Repeater, US B WiFi Repeater, WiFi Repeater, WiFi, Repeater</p>
---	---

References

- [User Manual](#)

[Manuals+](#), [Privacy Policy](#)

This website is an independent publication and is neither affiliated with nor endorsed by any of the trademark owners. The "Bluetooth®" word mark and logos are registered trademarks owned by Bluetooth SIG, Inc. The "Wi-Fi®" word mark and logos are registered trademarks owned by the Wi-Fi Alliance. Any use of these marks on this website does not imply any affiliation with or endorsement.