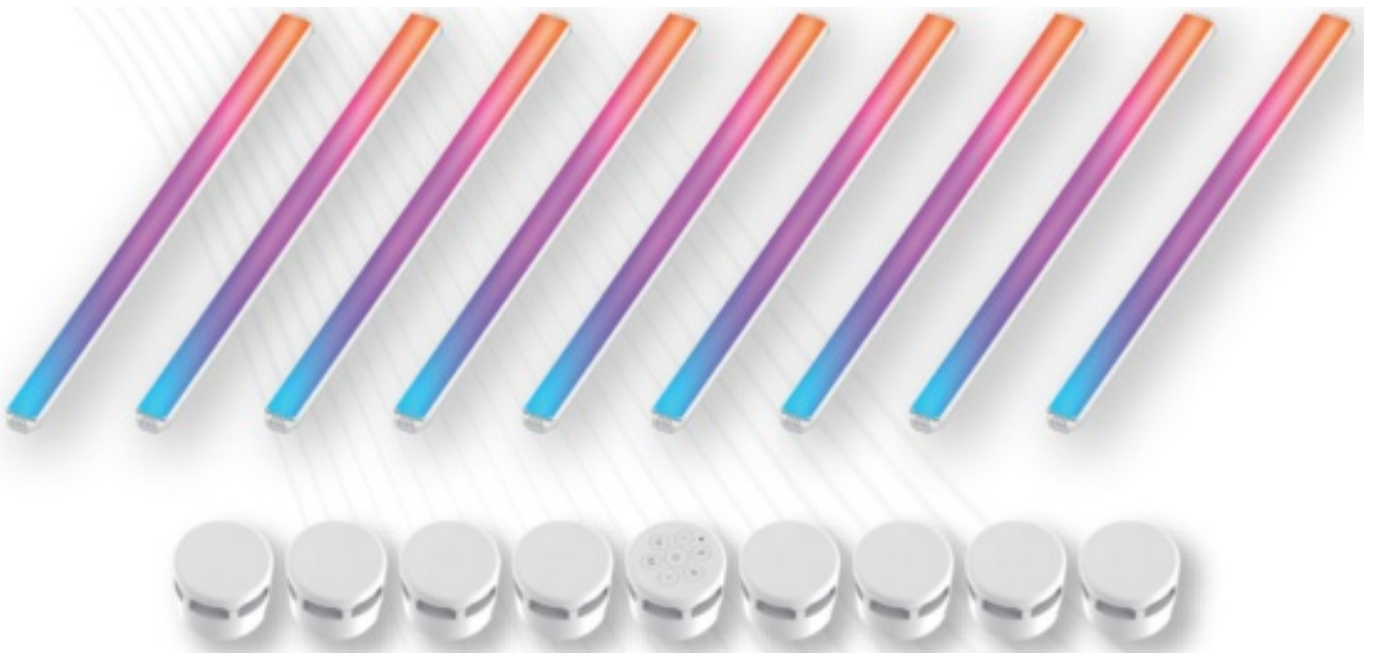




## **BNETA ST64 Smart Constellation Connect Light User Manual**

[Home](#) » [BNETA](#) » BNETA ST64 Smart Constellation Connect Light User Manual 

### **BNETA ST64 Smart Constellation Connect Light**



## Contents

- [1 GOOD TO KNOW](#)
- [2 INTRODUCTION](#)
- [3 SPECIFICATIONS](#)
- [4 PACKAGE INCLUDES](#)
- [5 QUICK INSTALLATION GUIDE](#)
- [6 BEFORE USE](#)
- [7 APP CONTROL](#)
- [8 BLUETOOTH MODE CONFIG \(COMMON\)](#)
- [9 QUICK MODE CONFIGURATION](#)
- [10 CONNECT TO AMAZON ALEXA](#)
- [11 CONNECT TO GOOGLE HOME](#)
- [12 FAQ](#)
- [13 Customer Support](#)
- [14 Documents / Resources](#)
  - [14.1 References](#)
- [15 Related Posts](#)

## GOOD TO KNOW

- Please keep the product away from open flames.
- Please keep away from water to avoid damage.
- Please keep out of reach of children. Use by children only under adult supervision.
- Please cut off power supply if a hazard occurs.
- Please use the product in line with instructions.
- For indoor use only – works better in a dark environment.

## INTRODUCTION

The Smart Constellation Splicing Light is an entertaining electronic device that can be spliced into your favorite pattern. It has 16 million colour effects that can be controlled by buttons, an app or voice device. Enhance your visual experience and make life more fun with creative patterns.

## SPECIFICATIONS

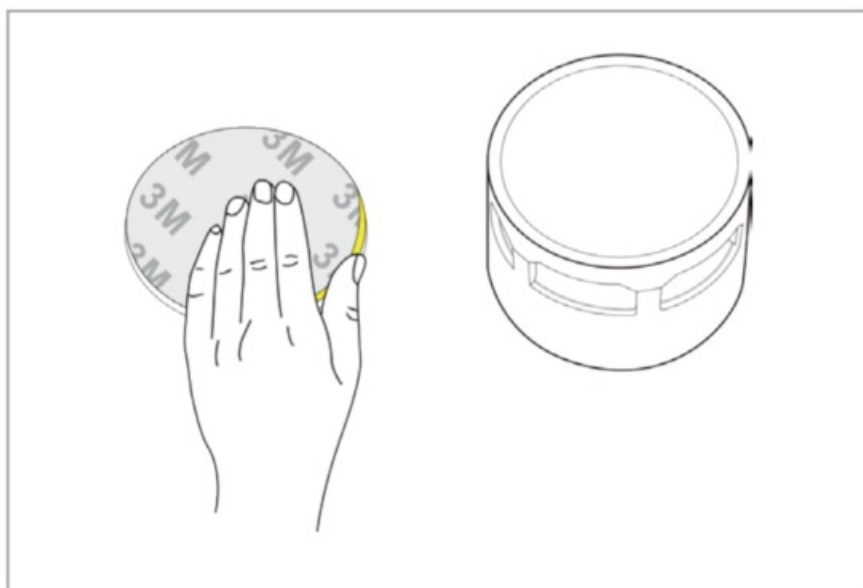
Power Input	12V 2A
Single Size (mm)	L270 x W16 x H10
Connector Size (mm)	040 X H33
Weight	Approx. 0.75kg
Work Temperature	<b>Operating:</b> -100°C-40°C RH<80% <b>Storage:</b> -20°C-70°C RH<80%
LED Color	RGBW
Wireless Type	Wi-Fi 2.4 GHz
Radio Technology	IEEE 802.11 B/G/N, Bluetooth 5.1
Application	Amazon Alexa, Google Home, Vandex Alice
App Support	iOS 8.0 or Android 4.1 and higher
Timer	Flexible Timing
Product Warranty	1 Year

## PACKAGE INCLUDES

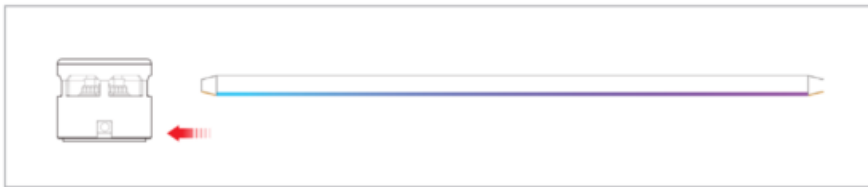
- 9 x Light Bars
- 19 x Connector
- 12 x EVA Foam
- 1 x Adapter
- 1 x User Manual

## QUICK INSTALLATION GUIDE

1. Peel off one side of the EVA foam sticker and stick it to the bottom of the connector.

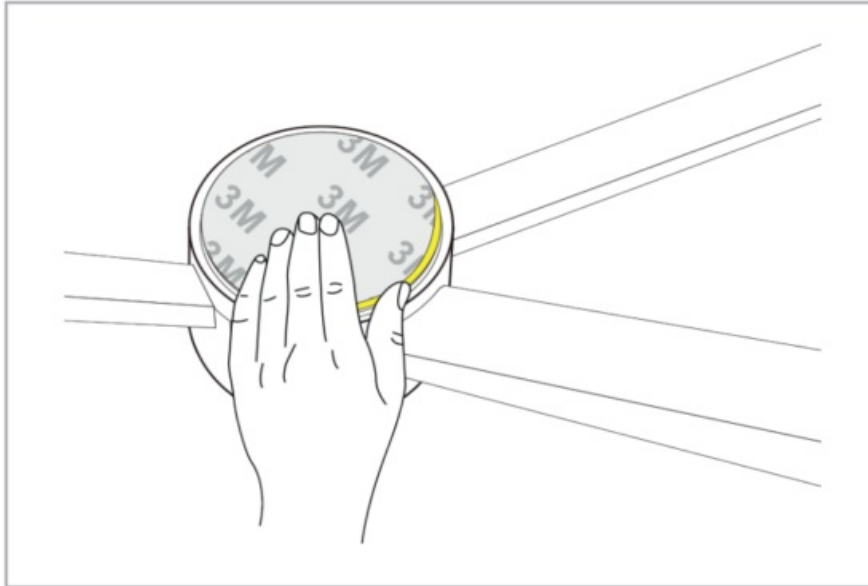


2. Insert the light bar into the connector for free splicing.

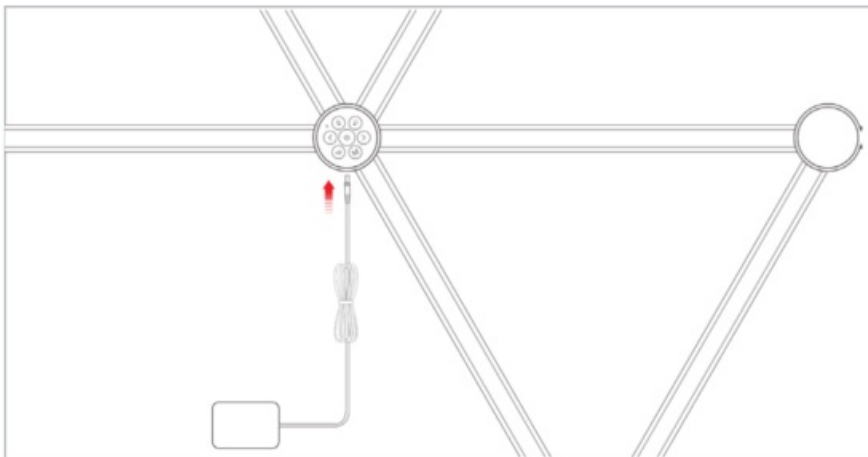


3. After the splicing is completed, tear off the EVA foam tape on the back of the connector and stick it on the wall.

**Note: Please make sure the wall is dry and flat.**



4. Please find the connector with the button and connect it to the adapter. Then connect the power supply. You can use the Smart Constellation Connector Lights to your heart's content.



## BEFORE USE

Please go through the functions of each button of the control box.

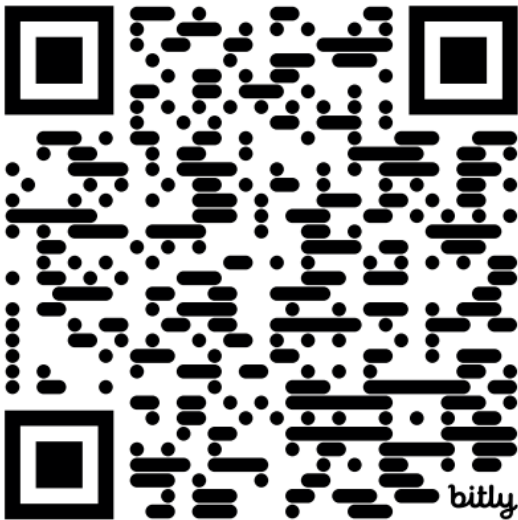
1. Switch to color light
2. Switch to white
3. Turn down brightness
4. Turn up brightness
5. Enter Music Sync Mode
6. On or Off Power Button
7. On or Off Power Button Mode
8. Scene Mode



## APP CONTROL

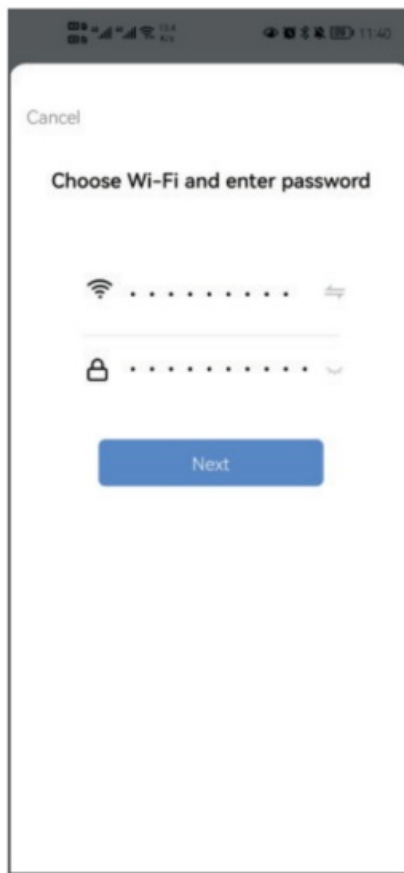
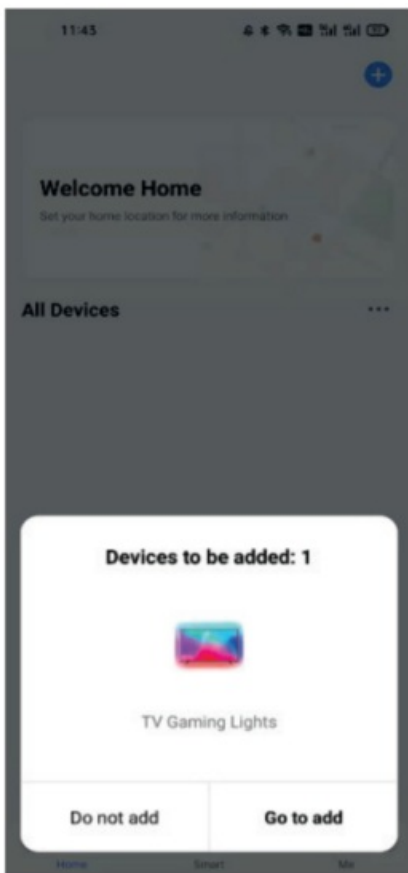
### DOWNLOAD THE FREE BNETA IoT APP

Scan the QR code and install our free app for either iOS or Android. Once downloaded, the app will ask you to register your device. Enter your email and select your country of residence.

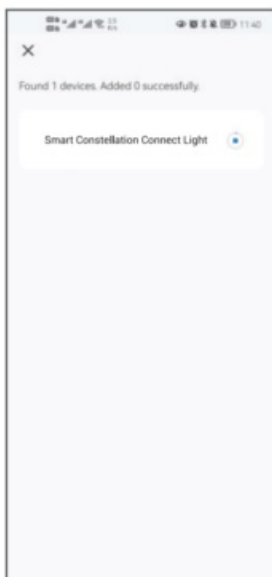


## BLUETOOTH MODE CONFIG (COMMON)

1. Turn on your phone's Bluetooth, after the Smart Constellation Connect Light is powered on. Wait for 3-5 seconds to press the power button on the Connector for 6-10 seconds until the red light blinks rapidly. Enter the add device interface. It automatically says "Devices to be added" then press "Go to add". If the devices doesn't appear automatically, then the product must be added manually.



2. Enter your Wi-Fi Password and press “Next” to add advice. Once connected, the App will prompt you to press “Done”.

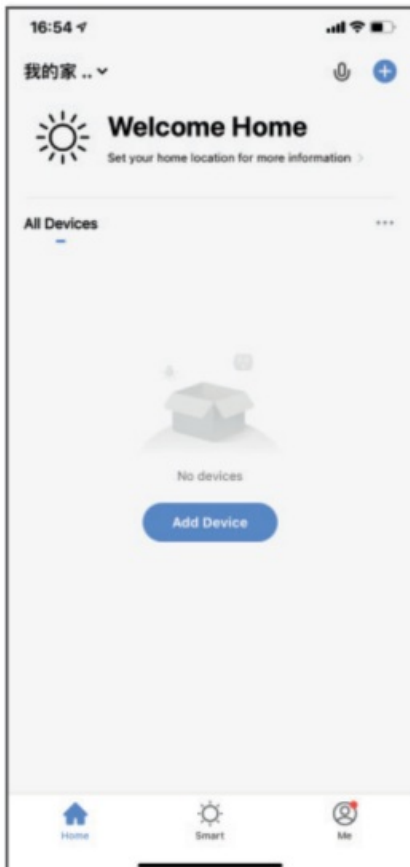


## QUICK MODE CONFIGURATION

1. **Ensure that quick mode configuration is initiated:**

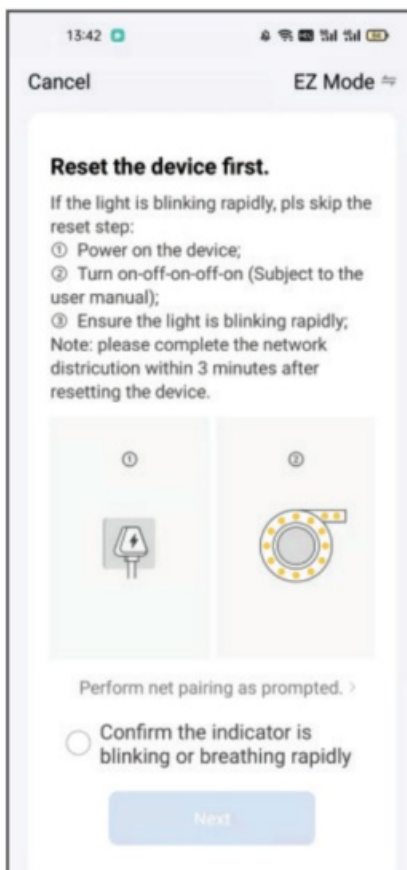
The indicator light blinks green rapidly (twice per second). If it blinks green slowly (once every 3 seconds), press and hold the Power Button on the Connector for 6-10 seconds until it blinks a red light rapidly.

2. Tap the icon “+” at the top of the light, choose any device type, and enter “Add Manually”.



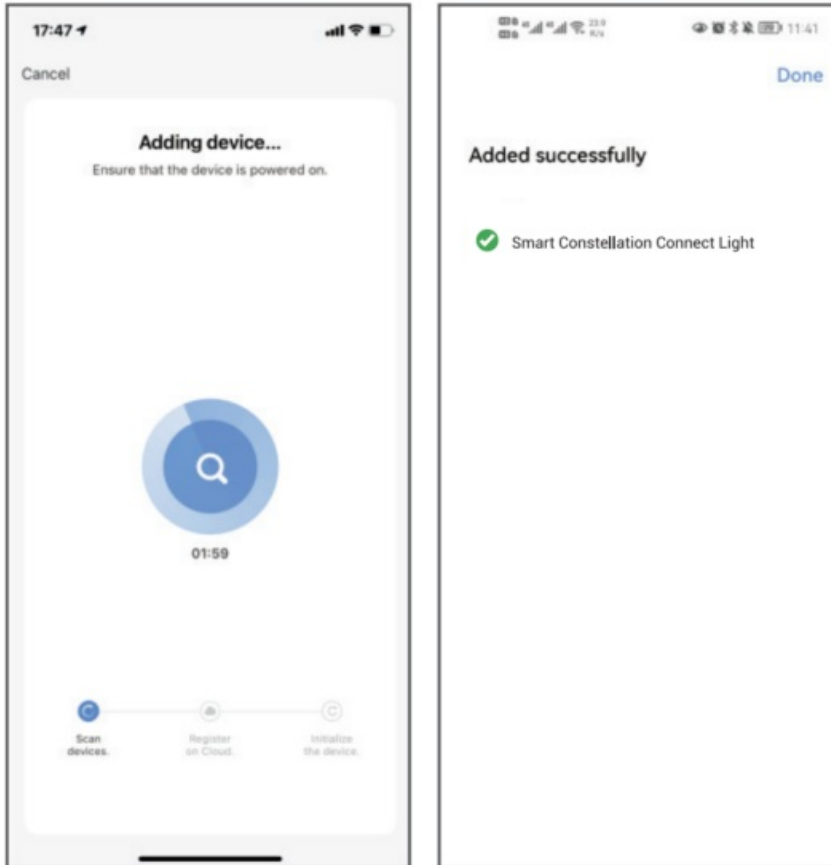
Please remember to choose the fast blinking option.

3. Follow up the in-app instruction to connect the Smart Constellation Connect Light to your Wi-Fi network.
4. Enter your Wi-Fi Password and press “Next” to add device. Once connected, the red light will change from blinking to always on.



5. Once connection finished, the App will prompt you to press “Done”.
6. Now you can control Smart Constellation Connect Light through Bneta IoT App, and the device will be added to

the “Device List”.



## CONNECT TO AMAZON ALEXA

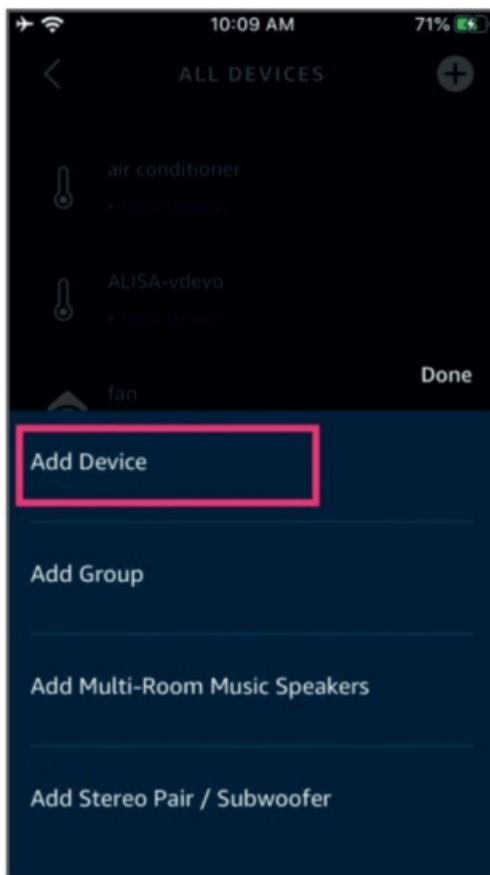
### 1. Complete product networking configuration in the BNETA App:

Complete the device’s networking configuration according to the prompts in the App. Note: In the App, change the name of the device to an easily identifiable name such as Alexa; names are usually in English, such as “Constellation Light”.

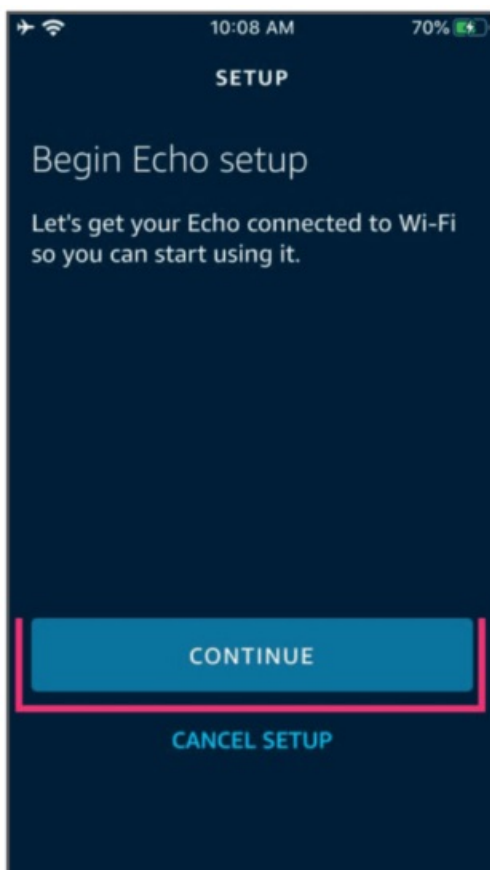
### 2. Configure the Amazon Echo device. If you have already configured Amazon Echo, you can skip this step. The following instructions are based on the iOS client.

- Make sure your Amazon Echo device is powered on and connected to a Wi-Fi network.
- Open the Alexa app on your phone. After successful login, tap on the menu in the upper left corner of the Home page, select “Settings” and tap “Set Up A New Device” to set up the Amazon Echo.



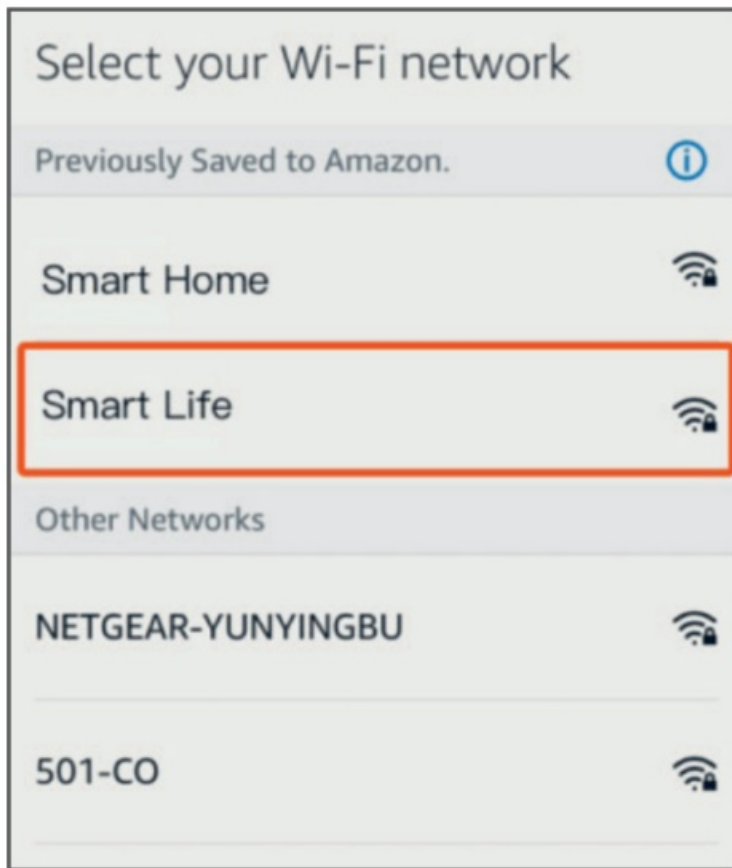


- Choose your Amazon Echo device type and language for connecting. Press and hold the small dot on the device until the light turns yellow. Then tap “Continue” to connect to the hotspot.
- After connecting to the Amazon Echo hotspot, return to the page. At this point, the connection is successful. Tap “Continue” to proceed to the next step. Choose a Wi-Fi network to connect to. Amazon Echo will take a few minutes to try to connect to the network.



- After the network connection is successful, Tap “Continue.” An introduction video will appear. After the

video ends, Tap “Continue” to jump to the Alexa Home page. The Amazon Echo’s configuration process has now been completed.




### 3. Key Step – Link Skills:

Tap on “Skills” in the Alexa app menu.

- Then search for “BNETA IoT”. Tap “Enable” to enable the Skill.
- Enter the BNETA IoT App account and password, then tap “Link Now” to link your BNETA IoT account to enable the Skill. Now you can start your smart home journey.

## CONNECT TO GOOGLE HOME

1. Launch the Google Home App and make sure Google Home speaker is installed. If not, please follow Google Home speaker installation instruction to complete the installation. Once Google Home is installed, in the upper left corner of App.
2. Home page, Pressing  button to show App menu. Then press “Home Control” in the menu.
3. After successfully linking your account, in the Google Home App you can see all your smart devices from your BNETA IoT App account. You can assign rooms for each device.
4. Now you can use Google Home to control your smart device, you can say like.



## FAQ

### What should I do when the configuration fails?

- Make sure the Smart Constellation Splicing Light's Red light is flashing -Twice per second.
- Make sure to connect your Smart Constellation Connect light within a short distance of your internet router.
- Check whether the available internet network has a frequency of 2.4GHz.
- Check your internet connection is working properly.

### How can I share devices with my family members?

- Open the BNETA App, select "profile"> "Devices Sharing" >"Sent" select "Add Sharing", now you can share with your family members.

### Can this APP be used on any type of mobile phone? Can I control the device from a distance?

- Yes, the APP can work with both Android & iOS systems. Once connected to the Internet, there is no distance limitation.

### Can I control the devices with a 2G/3G/ 4G connection?

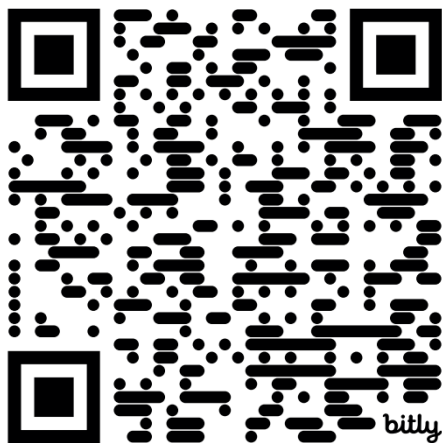
- The Smart devices must be registered first on a Wi-Fi network, after you have successfully connected it, then the Smart Constellation Connect Light can be controlled by your Smart Phone with 2G/3G/ 4G networks.

**Will it cause a fire or other safety hazards if kept on all night?**

- No, it will be safe to use all night.

**Can I adjust the brightness on this?**

- Yes, you can adjust the brightness on the App or the control button.



Download **BNETA IoT** free App from App Store or Google Play.



**Customer Support**

**BNETA International**

[sales@bneta.co.za](mailto:sales@bneta.co.za)

[www.bneta.co.za](http://www.bneta.co.za)



**Documents / Resources**

A small image of the BNETA ST64 Smart Constellation Connect Light. It shows a white, cylindrical light fixture with a series of colored lines (red, orange, yellow, green, blue) emanating from the top, suggesting a smart or adjustable light feature. The BNETA logo is visible in the top left corner of the image.	<p><a href="#">BNETA ST64 Smart Constellation Connect Light</a> [pdf] User Manual</p> <p>ST64 Smart Constellation Connect Light, ST64, Smart Constellation Connect Light, Constellation Connect Light, Connect Light, Light</p>
-------------------------------------------------------------------------------------------------------------------------------------------------------------------------------------------------------------------------------------------------------------------------------------------------------------------------	---------------------------------------------------------------------------------------------------------------------------------------------------------------------------------------------------------------------------------

**References**

- [User Manual](#)

[Manuals+](#), [Privacy Policy](#)

This website is an independent publication and is neither affiliated with nor endorsed by any of the trademark owners. The "Bluetooth®" word mark and logos are registered trademarks owned by Bluetooth SIG, Inc. The "Wi-Fi®" word mark and logos are registered trademarks owned by the Wi-Fi Alliance. Any use of these marks on this website does not imply any affiliation with or endorsement.