




BNDL TECH CFX Hybrid Heating System Meter User Manual

[Home](#) » [BNDL TECH](#) » BNDL TECH CFX Hybrid Heating System Meter User Manual 

BNDL TECH CFX Hybrid Heating System Meter User Manual



Contents

- 1 CFA VAPORIZER
- 2 What's in the Box:
- 3 Key Features
- 4 What's in a CFX Vape?
- 5 How to Use CFX with Dry Herbs?
- 6 How to Use CFX Vape with oil/wax
- 7 Battery and Charging
- 8 How to Dis-Assemble the Mouthpiece Components
- 9 Safety
- 10 Safety Features
- 11 Documents / Resources
 - 11.1 References

CFA VAPORIZER

Building off the powerful innovative heating technology found in the CF, The CFX takes vape innovation To the next level. Featuring a full 1.77 inch OLED Screen, The CFX easily produces massive amounts of vapor while simultaneously cooling down the vapor being drawn.



With a truly powerful 80w heating system, the CFX can produce a vapor that has full flavor and a full body. The CFX easily cools the vapor by taking advantage of an innovative bottom airflow path. Creating some of the purest tasting vape usually reserved for desktop vaporizers.



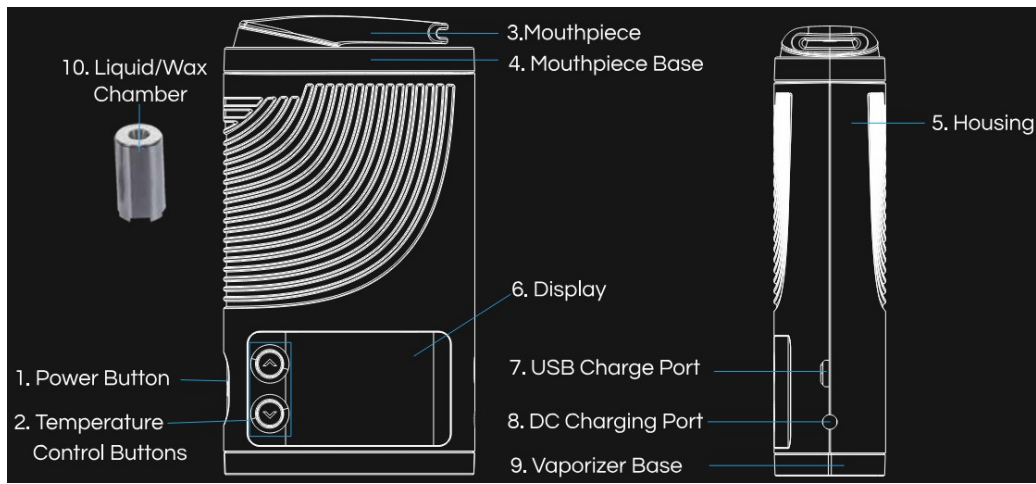
What's in the Box:

- 1 CFX Dry Herb Vaporizer
- 1 Liquid/Waxy Chamber (Organic COtton)
- 3 Stainless steel screens
- 1 Packing Tool and Dabber
- 1 Cleaning Brush
- 1 USB Charger
- 1 AC/DC Charger
- 1 User Manual

Key Features

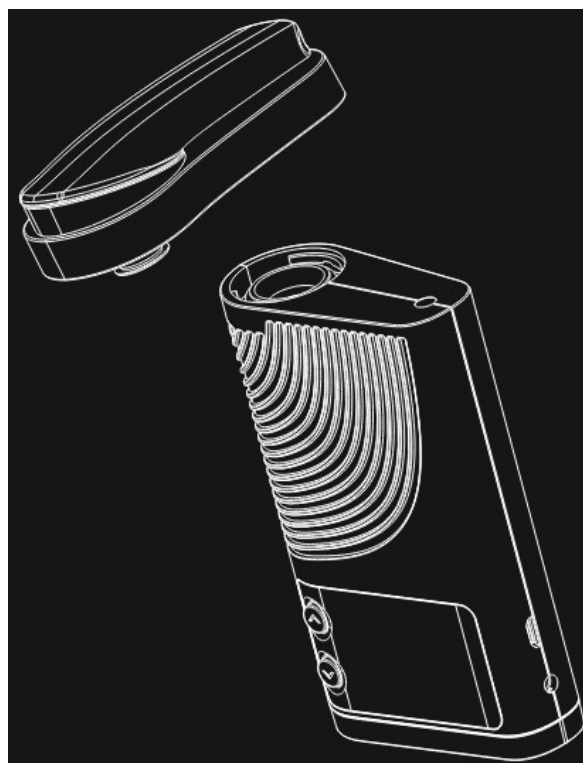
- 1.77" Colored Display with Full Range Temperature Control: 100°F – 430°F (40°C – 220°C)
- Next Generation Patented Cooling-Airflow-System (CAS) Technology.
- Portable Vaporizer that is Ergonomically Designed and Easy to Hold and Operate.
- Non Combustion Vaporizer.
- Fully Isolated Air Path allows for Clean and Pure Vaping.
- Compact, Rugged Design.
- Vibration Feedback for Operations.
- Built with Medical and Food Grade Material.
- Dual Charging Ways: Fast Charging DC 12V 1.5A Port, Regular Charging Micro 5-Pin 5V 2A Port.

What's in a CFX Vape?



1. Power Button – On/Off with Vibration Feedback.
2. Temperature Control Buttons – Adjusting accurately by 1°F per setting, 100°F-340°F (40°C – 220°C).
Press and hold the “+” or “-” to increase or decrease by 10F/10C
Press and hold “+” or “-” buttons simultaneously for 2 seconds to change from Fahrenheit to Celsius degrees or from Celsius to Fahrenheit degrees.
3. Mouthpiece – Food Grade, Safety and Healthy Insurance. Rotary 360°, Vape from any direction.
4. Mouthpiece Base – Made with different easy disassembled components.
5. Housing – Rugged and Ergonomically Design, Hot-Dissipation Design.
6. Display – 1.77” TFT Colored Display indicates Temperature Information, Battery Status, Duration Timer etc.
7. USB Charge Port – Regular Charging, Micro 5-Pin 5V 2A is best suggested.
8. DC Charging Port – Fast Charging, DC 12V 1.5A.
9. Vaporizer Base – Air Inflow.
10. Liquid/Wax Chamber – Fill your choice oil/waxy (not the same Time)

How to Use CFX with Dry Herbs?



How to LOAD

- Get the CFX and remove mouthpiece from the device.
Insert Screen into ceramic heating camber.
- Load choice blend loosely into the ceramic heating chamber. Tamp down with the dabber tool.
Do not over-fill. (note: do not turn on device while loading blend).
- Attach CFX mouthpiece.

ACTIVATE

- Rapidly press Power button five times within 2 seconds to power on CFX. The display will be opened with light.
- The display indicates the Temperature Information, Battery Status, Duration Timer etc.
- The Duration time is 300 seconds (5 minutes). “S” is short for Starting, “F” is short for Finishing.
- The Temperature Range is 100°F-430°F (40°C – 220°C), showed as below:



DISPLAY INDICATION

When setting, the Temperature is Green.

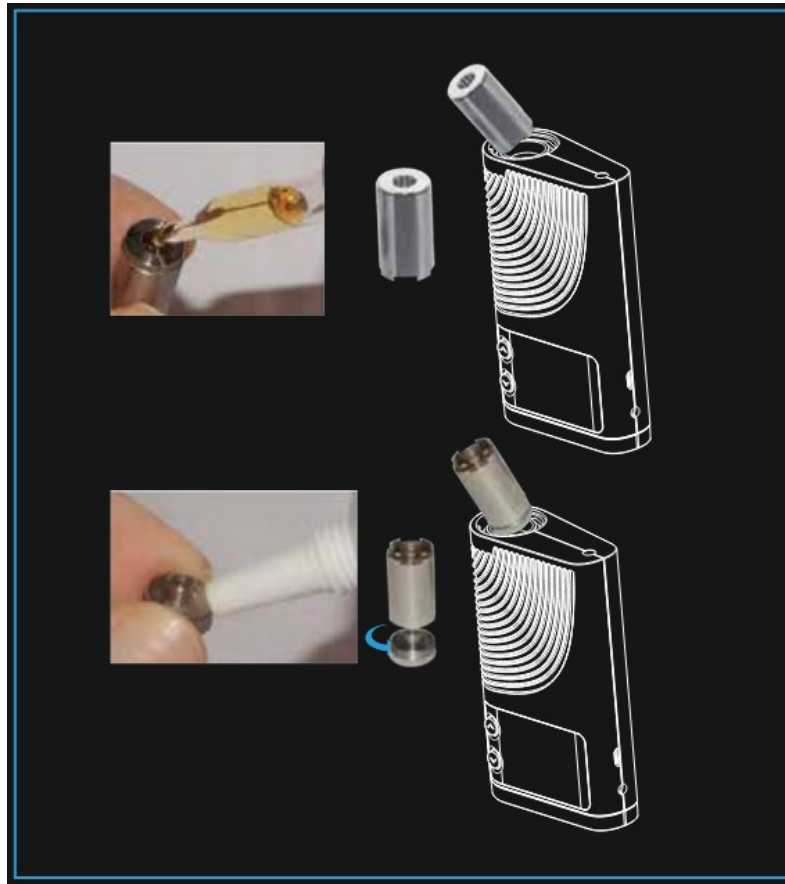


After Setting, the Temperature is Red. With Duration Timer running.



How to Use CFX Vape with oil/wax

LOAD

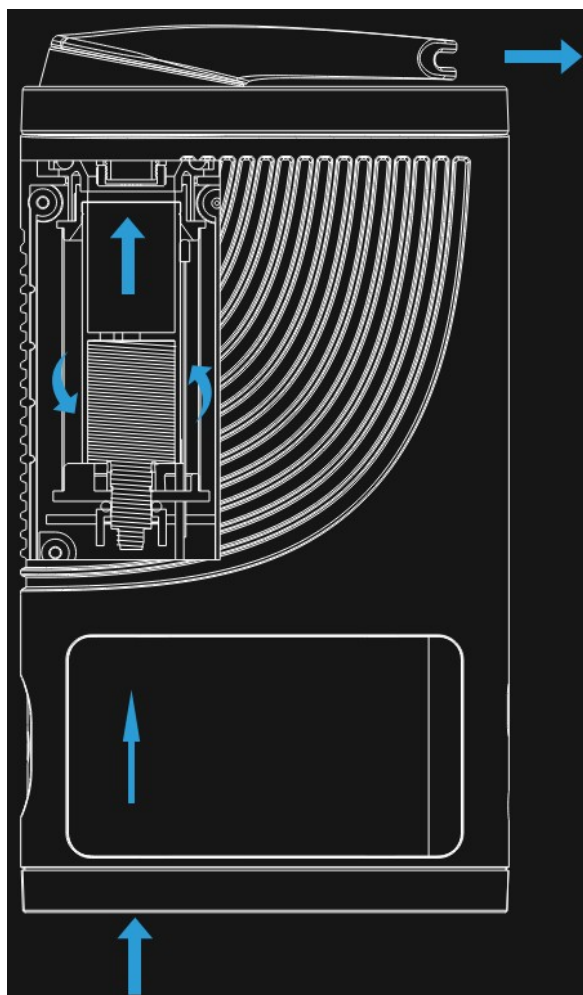


Oil

- Fill oil/wax chamber with at least 5 drops of (0.2 – 0.3ml) oil. Let oil settle for a few seconds.
- Insert oil/wax chamber into ceramic heating chamber
(**note:** do not turn on device while loading oil/wax chamber).

Wax

- Place concentrated oil around the recess of the lid. Screw lid on to oil/wax chamber.
- Insert oil/wax chamber , with lid facing down towards ceramic heating chamber (**Note:** do not turn on device while loading oil/wax chamber).



Fully Isolated Air Path for Clean Vaping



Air is fully directed to the heating chamber, isolating its path from the electronics. Ensuring a clean and pure vaping each time.

Technical Specifications CFX VAPE

- Dimension: 5.07"H x 1.26"D x 2.79"W (129mmH x 32mmD x 71mmW)
- Temperature Levels: 100°F – 430°F (40°C – 220 C)
- Capacity: 2500MAh
- Output Voltage: 5.8V-8.4V, Nominal Voltage: 7.4V
- Power On/Off: Press power button 5 times consecutively
- Safety Power Duration: 5 minutes
- Safeguard: Dual PCBA/IC Protection

Battery and Charging

CHARGING

- Initially charge the CFX for 4 to 4.5 hours by Micro 5-Pin Port (5V 2A), 1 for 1.5 hours by DC Port (12V 1.5A). The battery will stop charging when the icon is full.  When the battery level is low, charge the battery with included Micro 5-Pin Charger or DC Charger. Low battery level will be indicated with  icon flashing 10

times repeatedly.

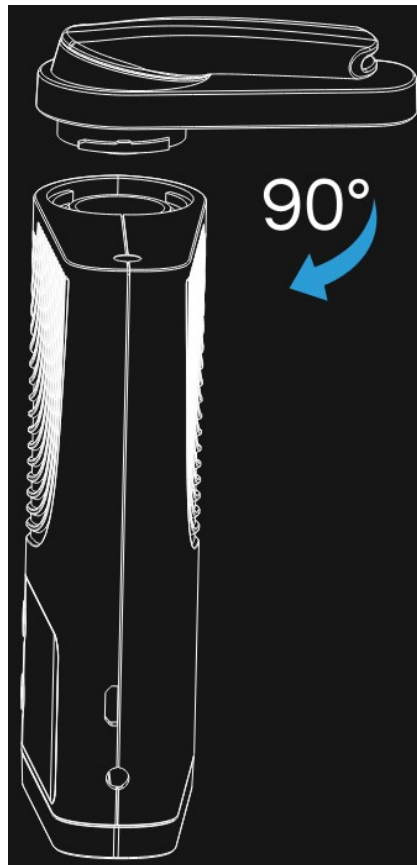
- Charging the CFX while powered on, the OLED display will stay lit.
- Charging the CFX while powered off, only the battery icon will be visible.
- Do not use CFX while charging. This will cause damage to the device.
- To prevent the device from overheating, do not leave the charger plugged in overnight.
- Do not leave charger plugged in or unattended without the device. Do not charge unit on bare carpet or rug.

BATTERY

The device contains a Lithium-Ion battery. Take caution and dispose in the correct receptacle. Do not discard in trash. Do not overcharge. Do not short-circuit the battery. at over 200°F

Notice: Lithium Ion Batteries are subject to degradation and reduced run time over the course of regular use while Flowermate took great care in selecting premium quality long life Lithium Ion batteries due to their non-memory features and ability to cycle 300 times preceding degradation, battery life will gradually diminish with extended use.

How to Load and Remove the Mouthpiece

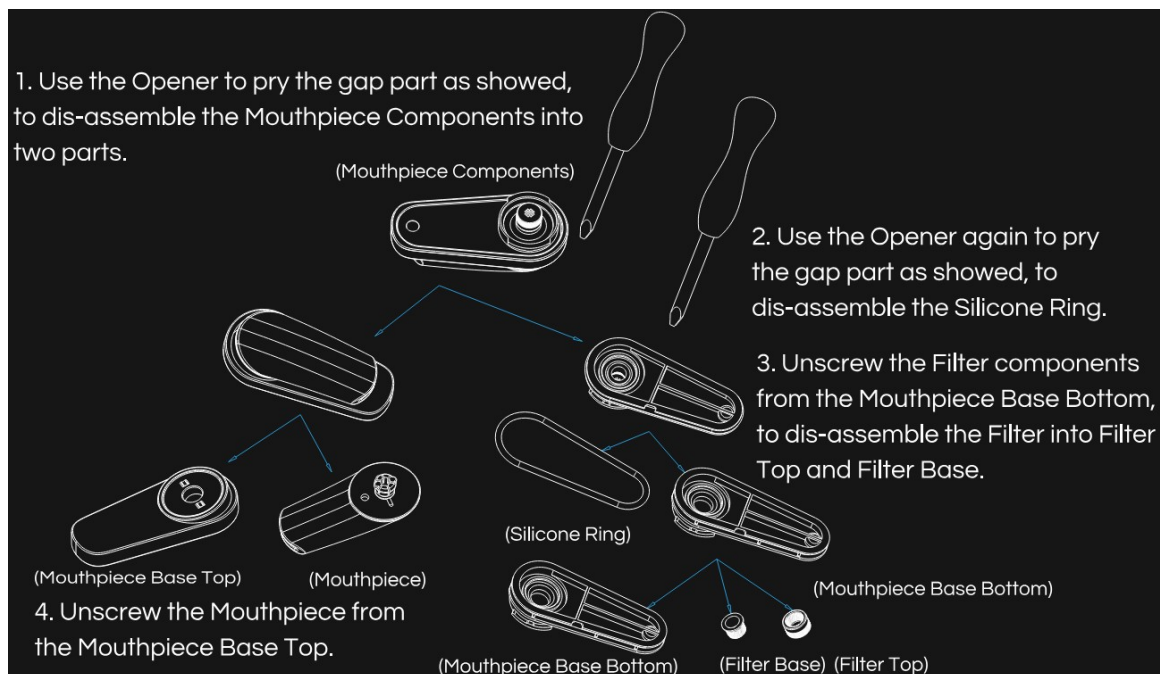


How to Load the Mouthpiece Components:

1. Make the Mouthpiece Components and the Device at 90°Angle.
2. Press the Mouthpiece Components into the device downward as showed.
3. Then rotate the Mouthpiece Component clockwise.

How to Remove the Mouthpiece Components is just the reverse of the above steps.

How to Dis-Assemble the Mouthpiece Components



Safety

WARNING

Failure to follow these safety instructions could result in personal injury or damage. Users of this device do so at their own risk. Neither Boundless Technology, LLC nor its retailers assume any responsibility or liability associated with the use/misuse of the device. Boundless Technology branded products are intended for adult use and consumption only. Keep this booklet in a safe place for future reference.

DISCLAIMER

This device is designed as a mobile solution for the practitioners of aromatherapy and should be used for dry herbal blends as indicated. This device is not intended for use with illegal substances.

CHOKING HAZARD

The CFX contains small parts which may be a choking hazard to small children. Keep device away from children.

HANDLING

- Do not drop, deform, bend, crush, puncture, incinerate, microwave, shred, paint or insert foreign objects into a Boundless Technology, LLC CFX.
- Do not clean CFX other than instructed by Boundless Technology, LLC.
- Do not attempt to repair or modify CFX yourself.
- Do not use a damaged CFX charger or non Boundless Technology charger. Incompatible chargers may carry different voltages, which may be a fire hazard. Use only the charger provided.
Failure to do so will void the limited warranty offered on Flowermate Technology products.
- Use caution when handling CFX, the heating chamber area is hot powered on. Refrain from direct contact with the main heating chamber when hot. Do not leave the device unattended when it is powered on or while the device is still hot.

Safety Features

SLEEP PROTECTION

The device is equipped with a safety sleep mode. When the device is powered on and after 6 minutes vaping, it

will go into sleep mode to avoid over-use.
Press and Hold the power button for 3 seconds to resume vaping.

MEMORY FUNCTION

The device features a smart memory function. It will memorize the data of current use before powering off. When powered on for next use, the last setting will be displayed.

SMART TEMPERATURE LEVELS

The CFX is equipped with a smart OLED display to manually configure any desired temperature setting within the modular range.

[BNDLSTECH.COM](https://bndltech.com)

Documents / Resources



[BNDLSTECH CFX Hybrid Heating System Meter](#) [pdf] User Manual
CFX Hybrid Heating System Meter, CFX, Hybrid Heating System Meter, Heating System Meter, System Meter, Meter

References

- [User Manual](#)

[Manuals+.](#) [Privacy Policy](#)

This website is an independent publication and is neither affiliated with nor endorsed by any of the trademark owners. The "Bluetooth®" word mark and logos are registered trademarks owned by Bluetooth SIG, Inc. The "Wi-Fi®" word mark and logos are registered trademarks owned by the Wi-Fi Alliance. Any use of these marks on this website does not imply any affiliation with or endorsement.