

BN-LINK®
U110AB 8-Button
Countdown In Wall Timer



BN-LINK U110AB 8-Button Countdown In Wall Timer Owner's Manual

[Home](#) » [BN-LINK](#) » BN-LINK U110AB 8-Button Countdown In Wall Timer Owner's Manual 

Contents

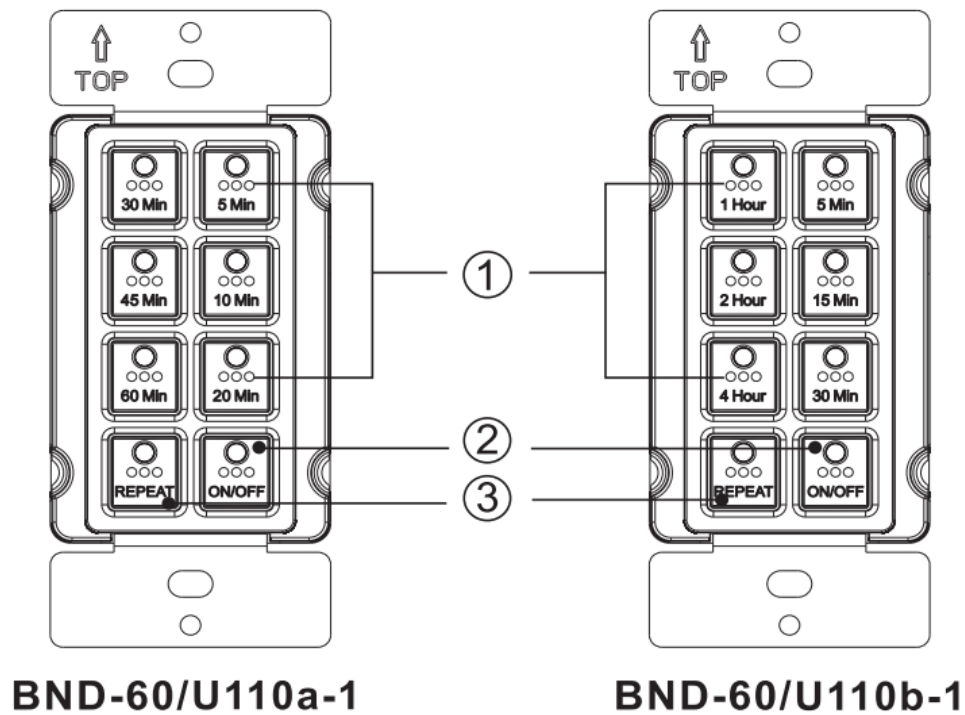
- [1 BN-LINK U110AB 8-Button Countdown In Wall Timer](#)
- [2 PRODUCTS VIEW](#)
- [3 TECHNICAL SPECIFICATION](#)
- [4 INSTALLATION](#)
- [5 OPERATING INSTRUCTION](#)
- [6 TROUBLESHOOTING](#)
- [7 ABOUT COMPANY](#)
- [8 Documents / Resources](#)
 - [8.1 References](#)
- [9 Related Posts](#)



BN-LINK U110AB 8-Button Countdown In Wall Timer



PRODUCTS VIEW



1. Countdown Program Button: Press to start a countdown program.
2. ON/OFF Button: Manually turn ON/OFF or override a running program.
3. 24-Hr Repeat Button: Activate or deactivate the daily repeat of a program.

There are 8 buttons on the main panel: 6 countdown buttons, ON/OFF button and REPEAT button.

Configuration of the countdown buttons varies in different sub-models:

- **U 11 0a-1:** 5Min, 1 0Min, 20Min, 30Min, 45Min, 60Min
- **U 110b-1:** 5Min, 15Min, 30Min, 1Hour, 2Hour, 4Hour

TECHNICAL SPECIFICATION

- 125V~,60Hz
- 15A/1875W Resistive, 10N1250W Tungsten,
- 10A/1250W Ballast, 1 /2HP, TV-5
- **Operating temperature:** 5°F- 122°F(-15°C- 50°C)
- **Storage temperature:** -4°F-140°F (-20°C-60°C)
- **Insulation class:** II
- **Protection class:** IP20
- **Clock accuracy:** + 2 minutes/month

WARNING

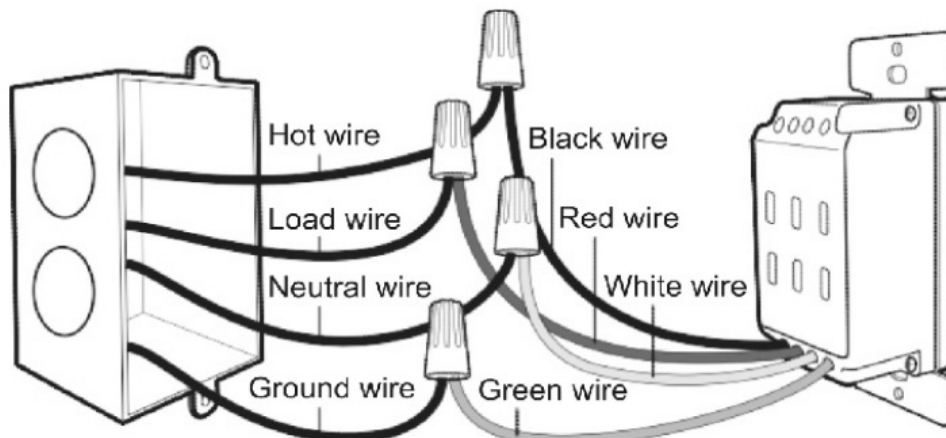
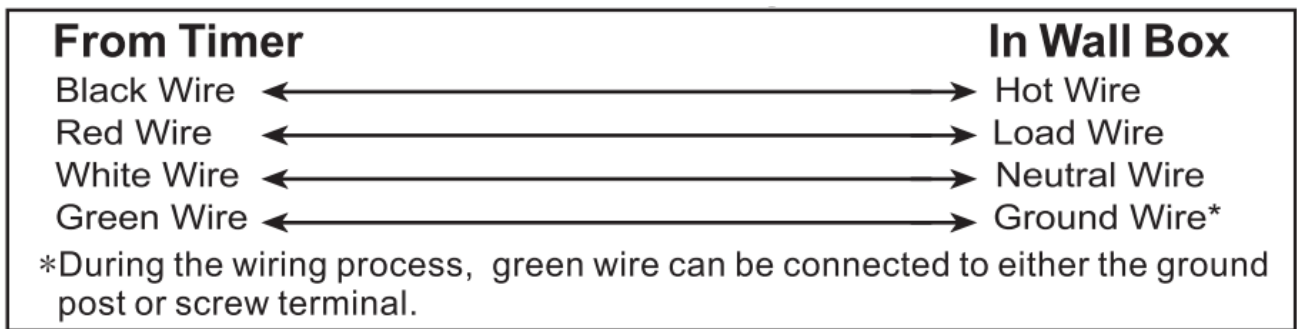
- **Single Pole:** Controls devices from one location. Not for use in 3-way setups where multiple switches control the same device.
- **Neutral Wire Required:** Must be present in the wall box for the timer to work properly.
- **Direct Wire Installation:** Designed for permanent installation in an electrical wall box.
- **Safety First:** Turn off power at the circuit breaker or fuse box before wiring to prevent fire, shock, or injury.
- **Professional installation:** Recommended to be installed by a licensed electrician following local, state, and national codes.
- **Indoor Use Only:** Not for outdoor use.
- **Electrical Ratings:** Do not exceed specified ratings.

INSTALLATION

1. Turn off the power: Shut off the power at the circuit breaker or fuse box, then remove the existing device or install a new timer.
2. Remove the existing fixture: Take off the current wall plate and switch from the wall box.
3. Check the wires: Make sure there are three wires in the wall box.
 1. Hot Wire: Comes from the circuit breaker box.
 2. Load Wire: Goes to the device that needs power.
 3. Neutral Wire

If these wires are absent, the timer won't function properly. Before installing the timer, it's essential to ensure that the necessary wires are present in the wall box. The neutral wire is particularly crucial here, as it provides the path for current to return, which is necessary for the proper functioning of many electrical devices. Without the neutral wire, the timer cannot complete the circuit and provide the required functionality.
4. Strip the wires: Remove about 1 /2 inch of insulation from the wires, ensuring the conductors are exposed and ready to connect.
5. Connect the wires: Use the included wire nuts to securely twist together the timer wires with the building wires. Make sure the connections are tight and reliable to avoid any loosening or poor contact.

Wire Pairing



6. Carefully insert the timer into the wall box, ensuring no wires are pinched. Make sure the timer is upright.
7. Secure the timer to the wall box using the provided screws.
8. Place the included decorator wall plate around the timer face.
9. Restore power at the circuit breaker or fuse box.

OPERATING INSTRUCTION

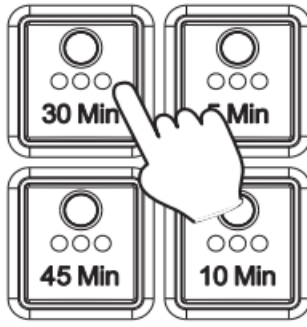
1. Initialization:

Upon initial power-up, all indicators on the timer will illuminate briefly, followed by them turning off after the self-diagnosis process. At this stage, there is no power output.

2. Setting a countdown program:

- Simply press the button corresponding to your desired countdown program.
- The indicator on the button will illuminate, and the countdown will commence.
- The timer will supply power and then cut it off upon completion of the countdown process. Pressing the same button repeatedly before the countdown concludes will not restart the countdown.

Example: The 30-minute button is pressed at 12:00, pressing this button before 12:30 will not restart the countdown program.



3. Shifting to another countdown program

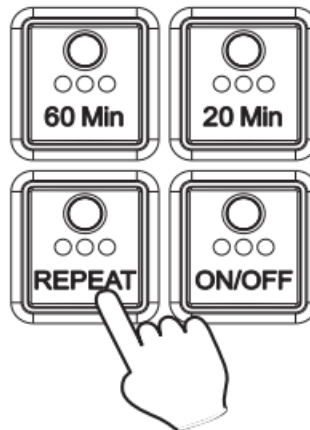
To shift to another countdown program, just press the corresponding button. The indicator on the previous button will go out and the indicator on the newly pressed button illuminates. The new countdown process starts.

Example: If the 1-hour button is pressed while a 30-minute program is already running, the indicator on the 30-minute button will turn off, and the indicator on the 1-hour button will light up. The timer will then output power for 1 hour. The power output will not be interrupted during the transition.

4. Activating the daily repeat function

Press the REPEAT button when a countdown program is running, the indicator on the REPEAT button illuminates, indicating that the daily repeat function is now active. The current program will run once again at the same time in the next day.

Example: If a 30-minute program is set at 12:00 and the REPEAT button is pressed at 12:05, the 30-minute countdown program will run every day at 12:05 from the next day on.



5. Deactivation of the daily repeat function Follow either way below to turn off the daily repeat function.

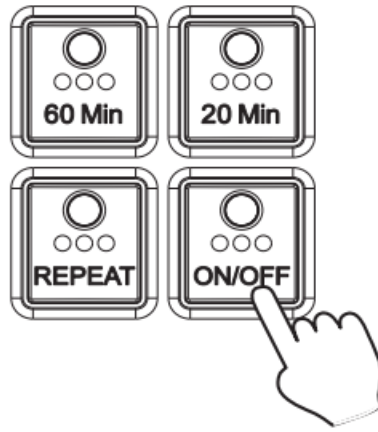
- Press REPEAT button, the indicator on the button will go out. This will not affect an ongoing program.
- Press ON/OFF button to end the ongoing program as well as the daily repeat function.

Note: When a countdown program is in the run with the daily repeat function active, press another countdown program button will start a new countdown process and deactivate the daily repeat function.

6. Termination of a countdown program.

countdown program terminates in the following 2 conditions:

- When the countdown program completes, the indicator goes out and the power output is cut off.
- Press ON/OFF button at any time to terminate a countdown program. This operation also deactivates the daily repeat function.



7. Always ON

- If a countdown is already in the run or the daily repeat function is active, press ON/OFF twice to set the timer to ALWAYS ON.
- If the timer is in OFF mode, press ON/OFF once.

Note: In ALWAYS ON mode, the indicator on the ON/OFF button illuminates and the power output is permanent.

8. Terminating ALWAYS ON

- Press ON/OFF button. The ON/OFF indicator goes out and the power output is cut off, or,
- Press a countdown program button.

9. Restarting a running countdown program

- Press ON/OFF to terminate the current program, then press the desired countdown button, or
- Press another countdown button, then press the previous countdown button again, or
- Activate the daily repeat function (if it is already active, deactivate it first) to restart the current countdown process. If the daily repeat function is not needed, press the REPEAT button again to turn it off.

TROUBLESHOOTING

When the product is powered, please check that all buttons and indicators operate properly. Please note that REPEAT indicator illuminates only when a countdown program is active.

• PROBLEM:

No button is responsive when pressed.

◦ SOLUTION:

1. Check if the product is receiving power.
2. Check if the wiring is correct.

• PROBLEM:

The 24-hr repeat function is not active.

◦ SOLUTION:


Please check if the REPEAT indicator is on. This function activates only when the indicator is on.

ABOUT COMPANY

- BN-LINK INC.
- **Address:** 11701 6th Street, Rancho Cucamonga, CA91730

- **Customer Service Assistance:** + 1 [909-592-1881](tel:909-592-1881)
- **E-mail:** support@bn-link.com
- **Web:** <http://www.bn-link.com>
- **Working Hours:** MON-FRI 09:00AM-5:00 PM
- Designed in California Mada in China

Documents / Resources

 <p>BN-LINK PRODUCT # U110AB/110</p> <p>8-BUTTON COUNTDOWN IN-WALL TIMER WITH REPEATING FUNCTION</p> <p>ENERGY STAR 50W/60</p> <p><small>Please keep this handbook near the timer unit Designed in California, Made in China</small></p>	<p>BN-LINK U110AB 8-Button Countdown In Wall Timer [pdf] Owner's Manual</p> <p>U110AB 8-Button Countdown In Wall Timer, U110AB, 8-Button Countdown In Wall Timer, Count down In Wall Timer, In Wall Timer, Wall Timer, Timer</p>
--	--

References

- [User Manual](#)

[Manuals+](#), [Privacy Policy](#)

This website is an independent publication and is neither affiliated with nor endorsed by any of the trademark owners. The "Bluetooth®" word mark and logos are registered trademarks owned by Bluetooth SIG, Inc. The "Wi-Fi®" word mark and logos are registered trademarks owned by the Wi-Fi Alliance. Any use of these marks on this website does not imply any affiliation with or endorsement.