




## BN-LINK CP-C11 Smart Wall Socket User Guide

[Home](#) » [BN-LINK](#) » BN-LINK CP-C11 Smart Wall Socket User Guide 

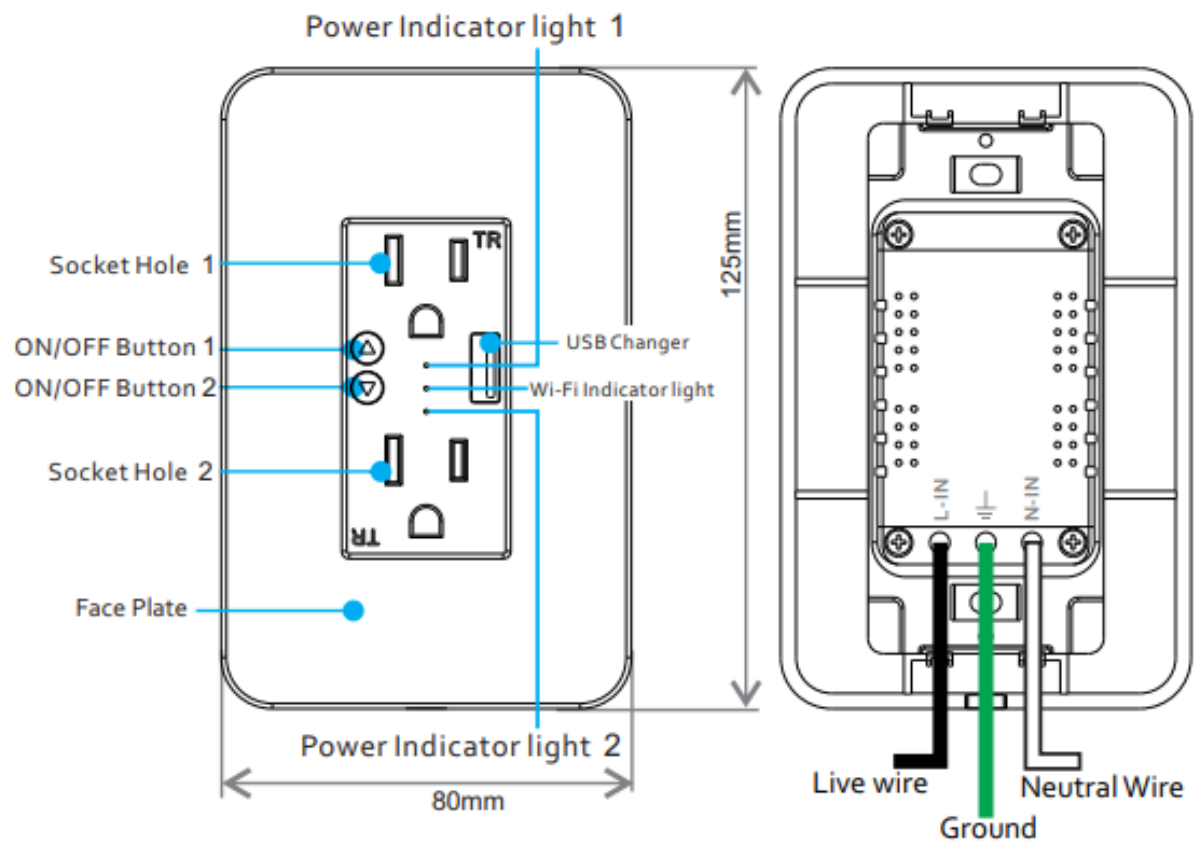


### Smart Wall Socket User Guide

#### Notes Before Installation

1. Wi-Fi Only support a 2.4GHz network (802.11 b/g/n)
2. Neutral wire Required.
3. Basic electrical wiring knowledge or experience required, or please consult a professional electrician
4. Do not access more than the maximum power of the device design
5. ON/OFF Button also can be used as the reset button, long press to reset your smart socket to factory defaults. Only do this if you are sure you want to erase all your settings

#### Smart Home



#### **Safety Notice:**

Cut off the power before installation

Please use it only when it's installed with RCD or current leakage protector at home

#### **Contents**

- [1 Specifications](#)
- [2 Indicator light meaning](#)
- [3 Installation Guide](#)
- [4 Documents / Resources](#)
- [5 Related Posts](#)

## **Specifications**

Type	Smart Wall Socket
Model	KS-604S
Power supply mode	Neutral+Live Wire
Rated Current	15A(Max)
Rated Voltage	AC110-125V-50/60Hz
Load Power	Single 1500W Total 2500W Inductive Load<2000W
USB Output	5V/2.1A
Wireless Frequency	2.4GHZ
Wireless Standard	IEEE802.11 b/g/n

### Indicator light meaning

Indicator	Status	Description
Green	Rapidly blinks	Ready for connection (Default Mode Only)
Green	Slowly blinks (1 time every 3 S)	Ready for connection (AP Mode Only)
The red light is off	Off	Turn the light off
The red light is always on	On	Turn the light on
Green	Flash Slowly	No Internet

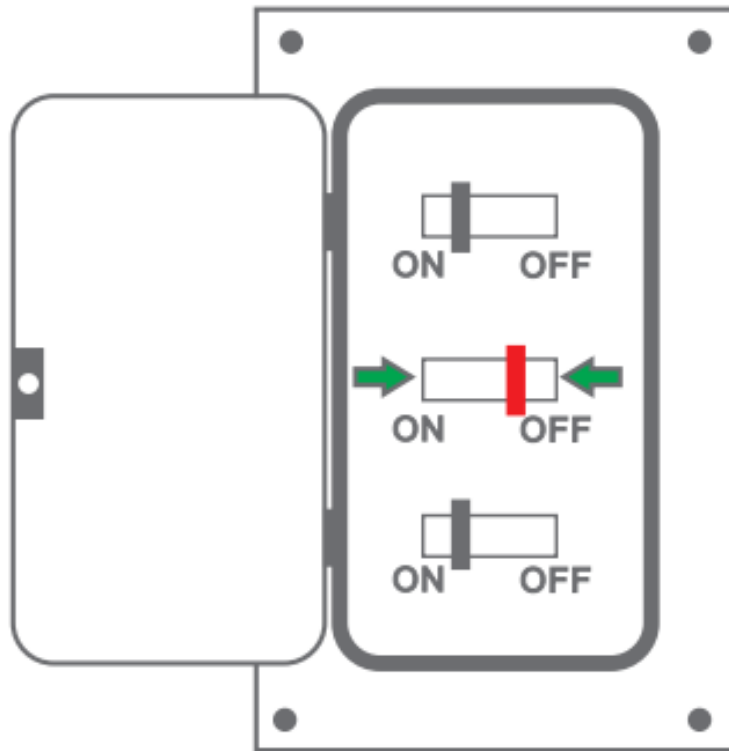
### Installation Guide

#### STPE.1

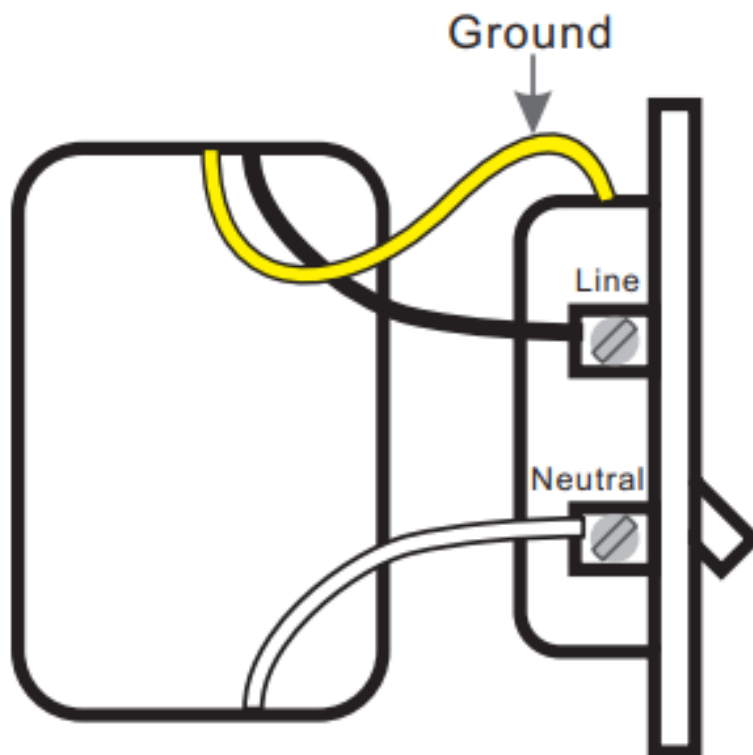
Turn off the circuit breaker

Find your socket's control in your circuit breaker and turn it off, ensuring the socket power off completely.

#### STPE.2



Remove the original socket  
In the wall cassette, find the neutral wire line wire and ground wire.

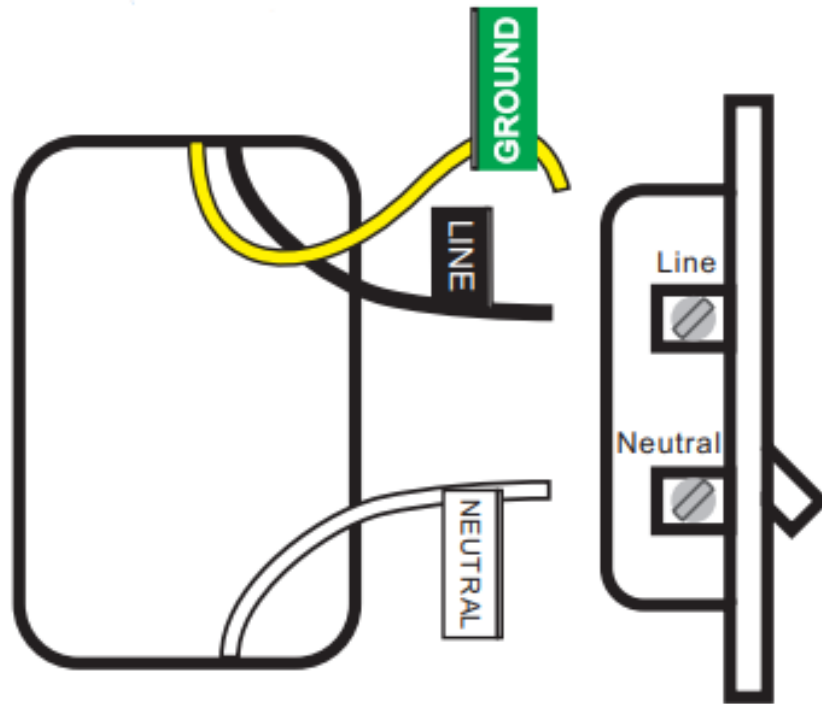


If your original socket is also two jacks, you may find 4 or 5 wires. Please find the neutral wires Line wires and ground wires. This smart socket only needs to use neutral wires Line wires and ground wires, other lines do not need to be connected

### STPE.3

#### Label your wires

Mark or record the corresponding line before removing the old socket



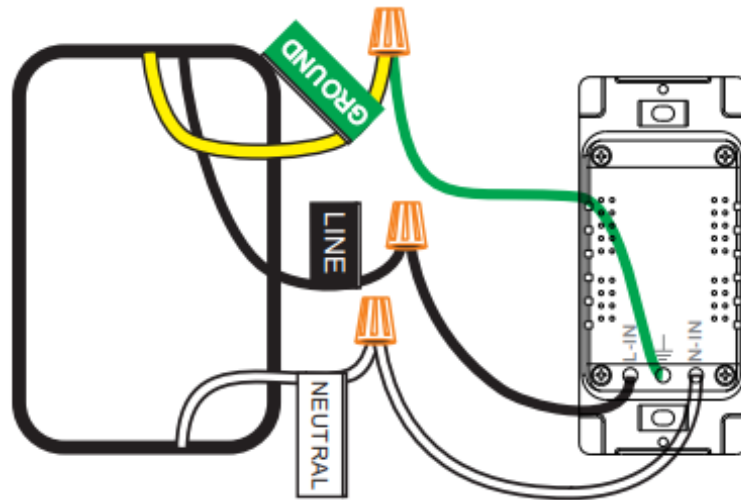
Usually:

White represents the neutral line Black represents the fire line Green or yellow or a single bare copper wire represents the ground wire The above is for reference only and cannot be used as a standard.

#### STPE.4

##### Install socket

Use wire nuts to connect the socket wires to your home wires, following the diagram. Be careful to match the line. Then remove the stickers, screw the socket into the wall. And attach the faceplate.

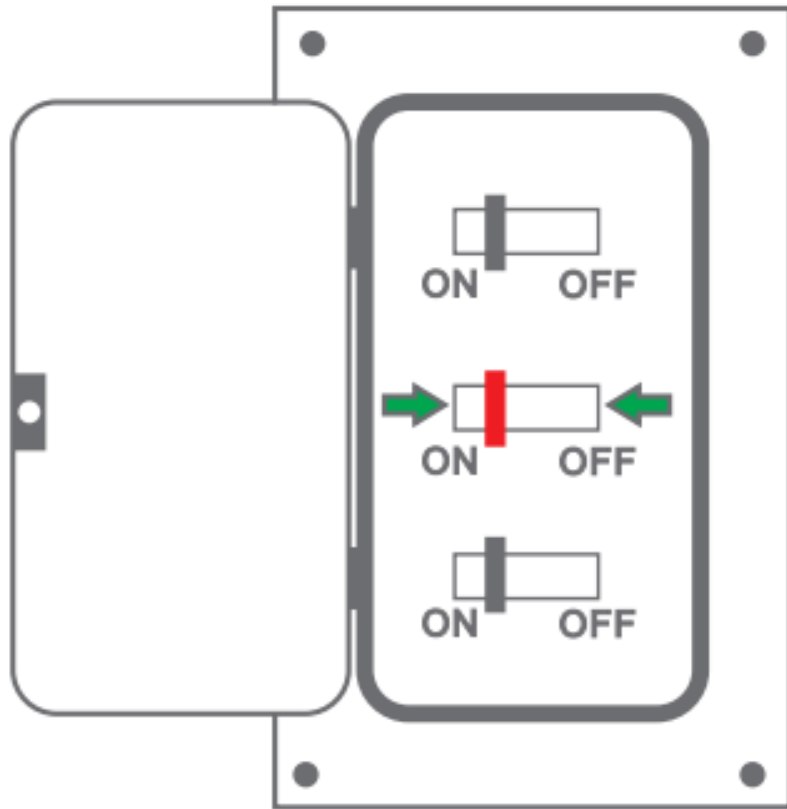


For safety, please connect the ground wire

#### STPE.5

##### Turn on the circuit breaker

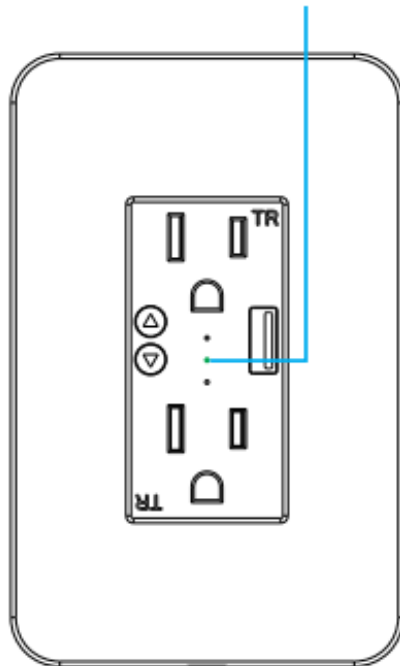
Turn on your socket's power from the circuit breaker. Press the socket a few times to make sure it works.



#### STPE.6

#### Check the Wi-Fi light

Tap NEXT when the Wi-Fi indicator light blinks Indicator light rapidly blinks (2 times per second)



#### Install the “Smart Life” APP

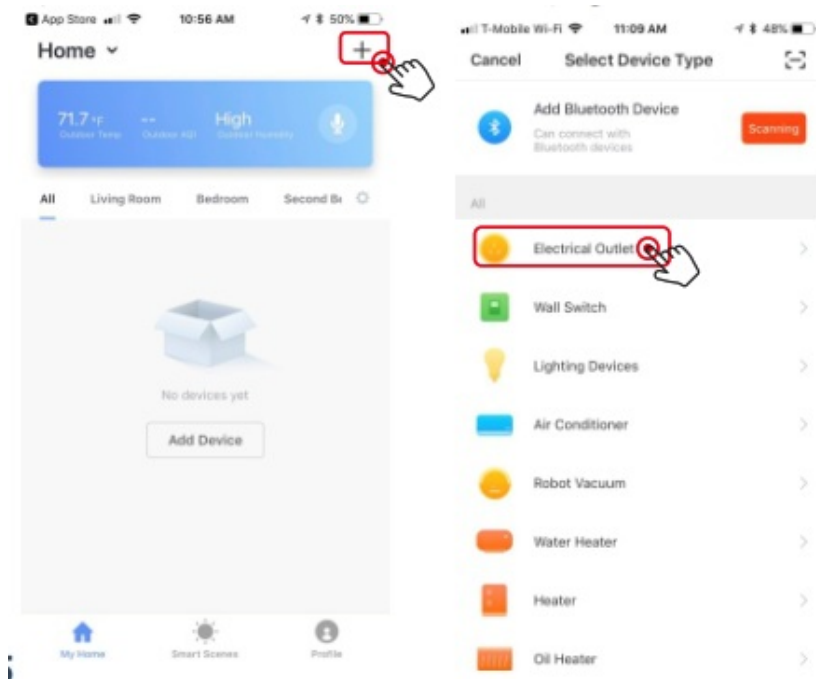
Step A . Find out the “Smart Life” app in the Apple app store, Google Play, or scan the QR code below and install it.



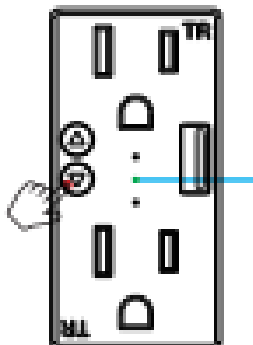
<https://smartapp.tuya.com/smartlife>

The free app "Smart Life" is compatible with mobile devices that support iOS 8.0 above, Android 4.4 above. Step B: Enter the register interface, input the email address/phone number for getting the verification code to register an account. Please just log in if you already have a Smart Life account.

Step C: Add the switch to the Smart Life APP. Note: This smart socket can only support a 2.4G network and cannot work with a 5.0G network. Please check if your home network is 2.4G and make sure that your phone has been connected to your WI-FI home network. (1) Tap the "+" button on top right corner to add a device, then tap "Electrical Outlet" to enter the next page.

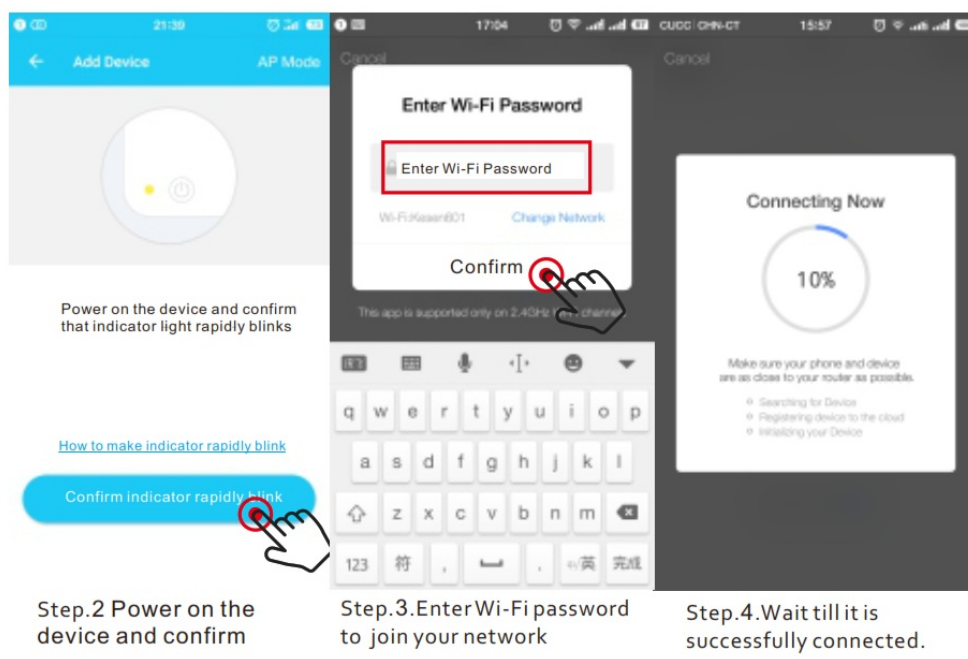


Default Mode(Recommend)

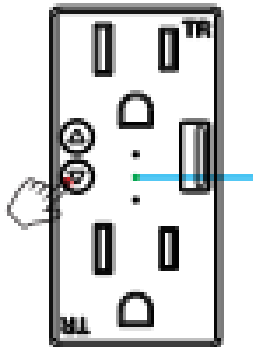


Indicator light rapidly blinks (2 times per second)

Step 1. Make sure the indicator blinks rapidly, if not, hold the any one ON/OFF button for 7 seconds for reset.



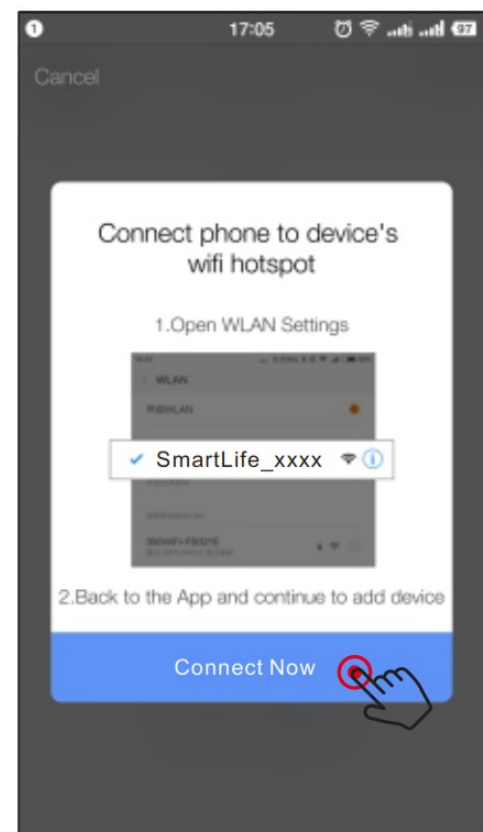
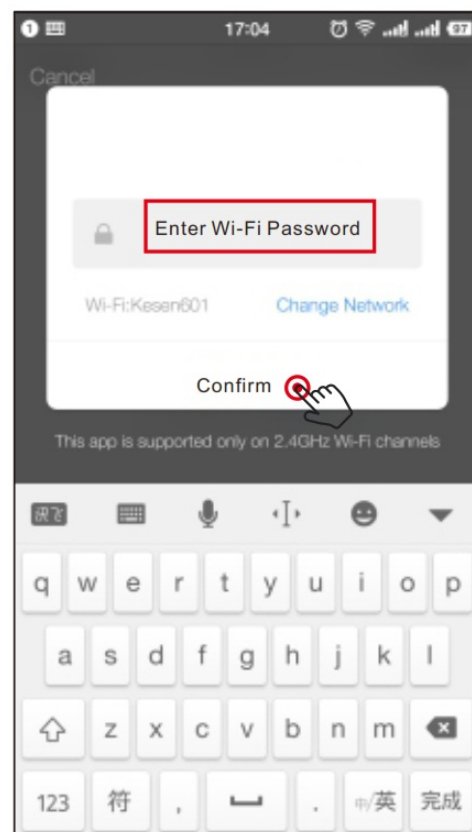
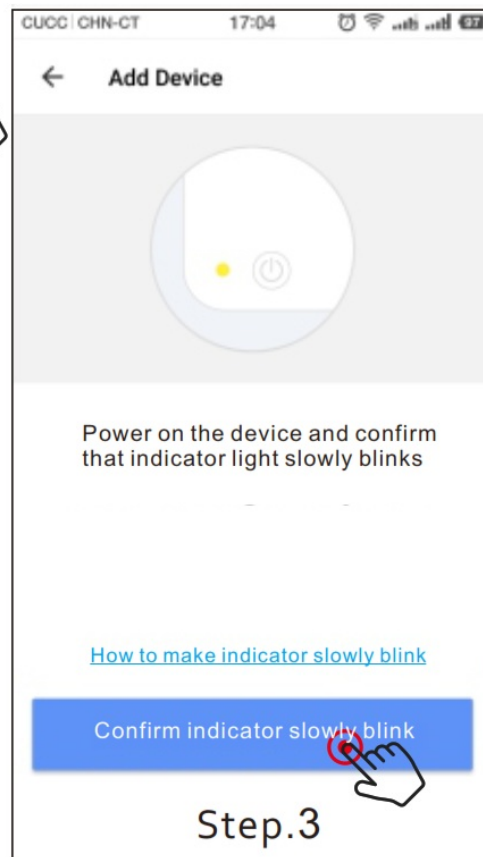
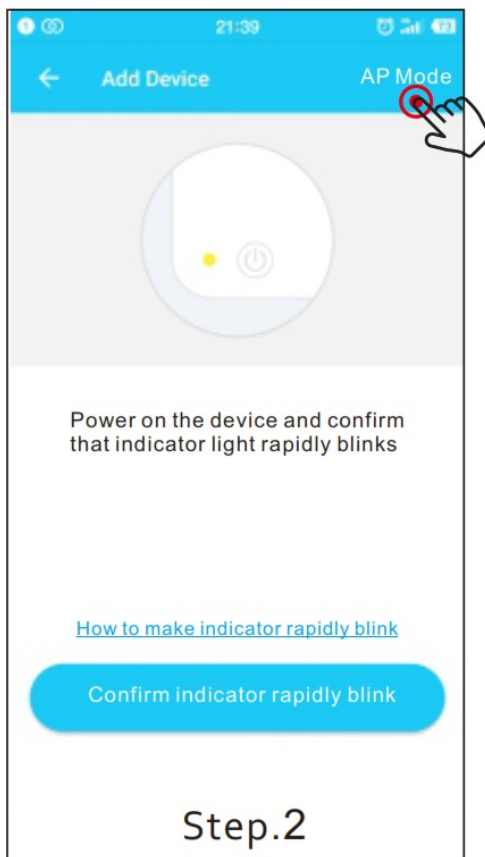
**Note:** When finishing the default mode please go directly to Step.9  
AP Mode(Alternative)

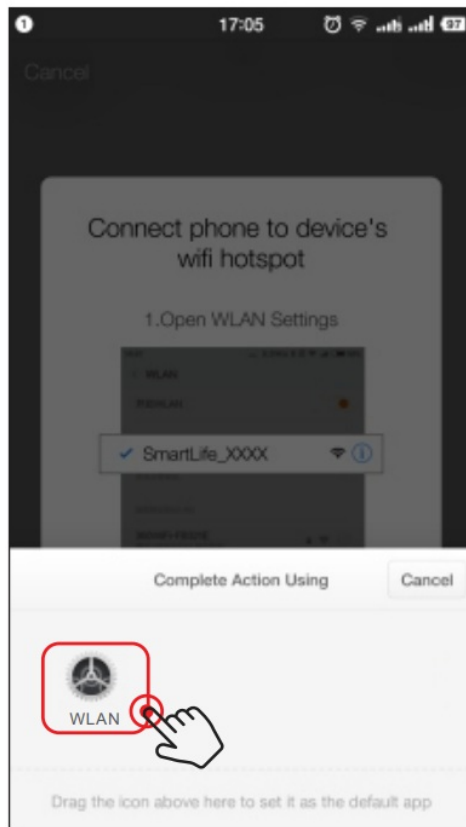


Indicator light slowly blinks (1 time every 3 seconds)

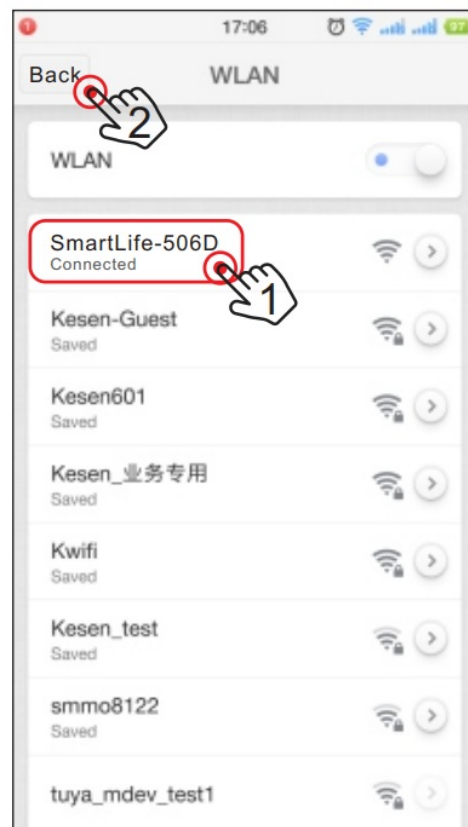
Step 1. When the indicator blinks rapidly, press and hold the anyone ON/OFF button for another 7 seconds. the indicator will blink slowly.



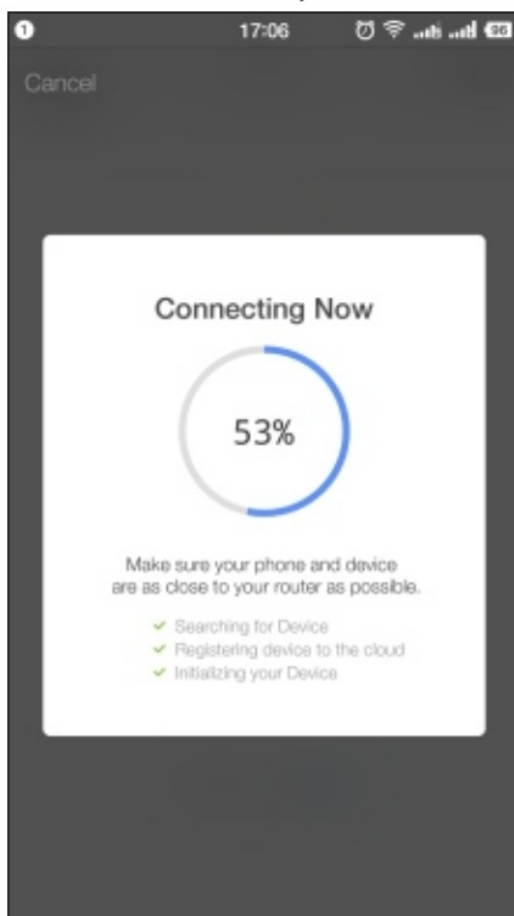




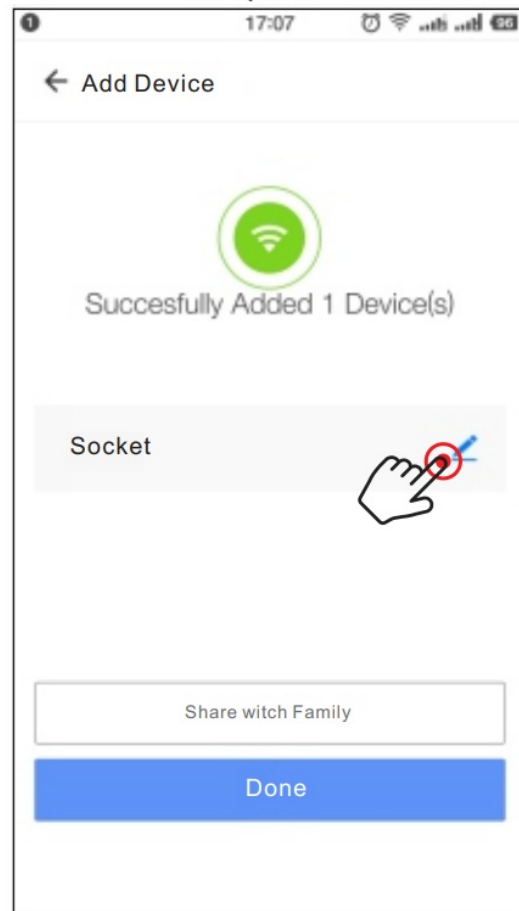
Step.6



Step.7



Step.8

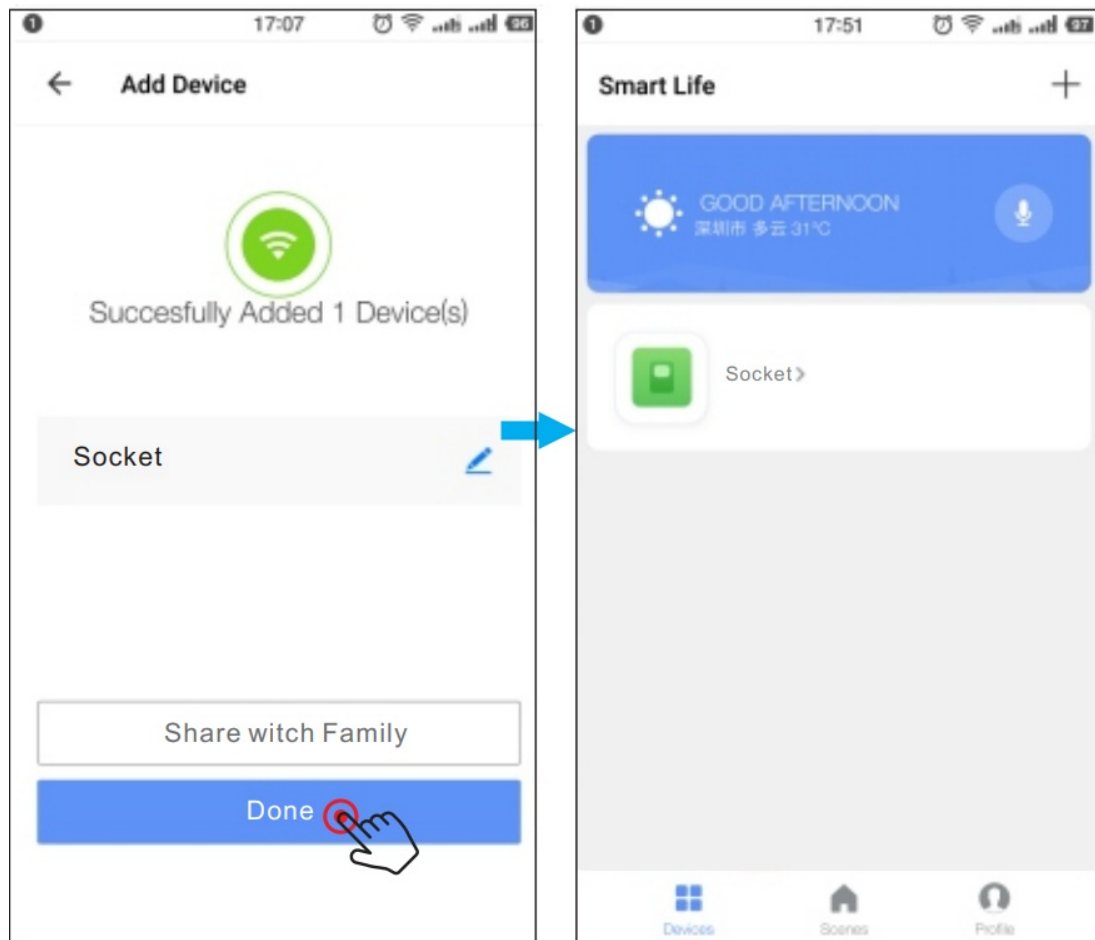


Step.9  
Modify socket name

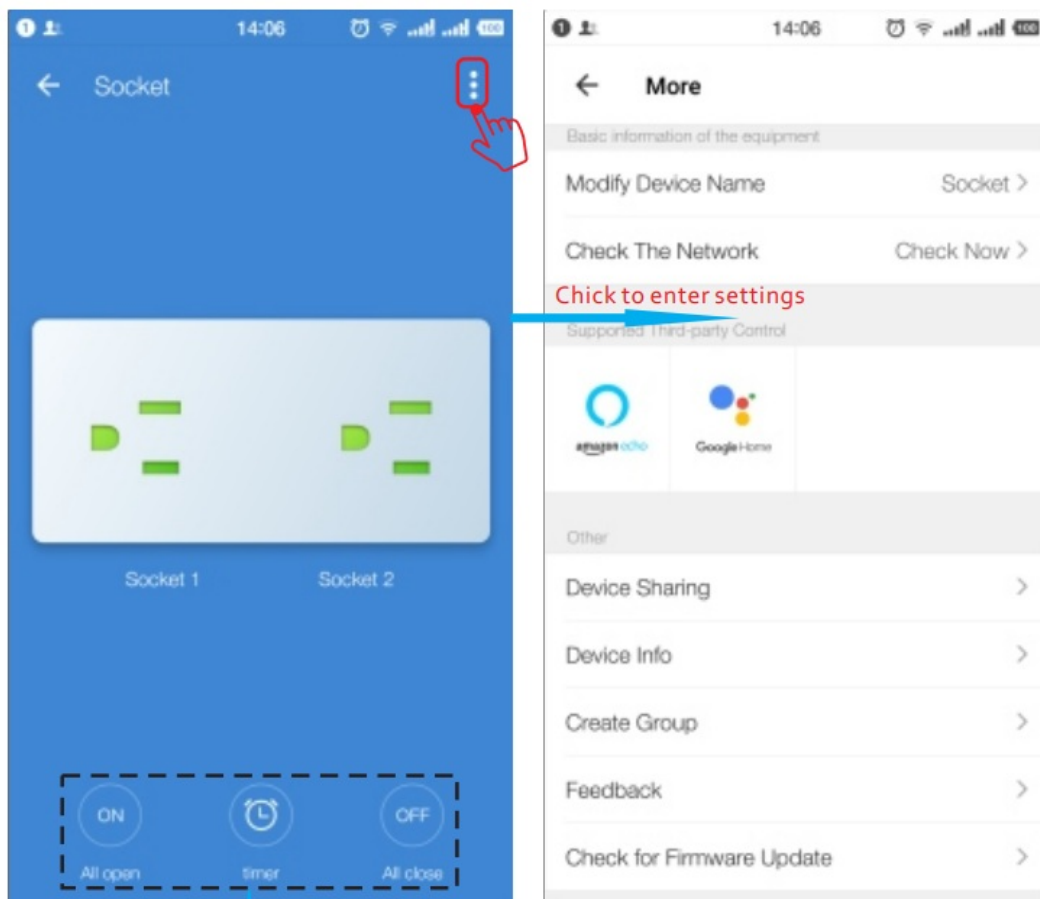
Step D: Give a name to the switch and tap" Done". you will find the device you've named is shown on the app

homepage. Tap the device to enter the setting page.

**Note:** The name you give to the device will be the name for voice control on Amazon Alexa or Google Home later. For example, the device is named "Socket" in this user guide.

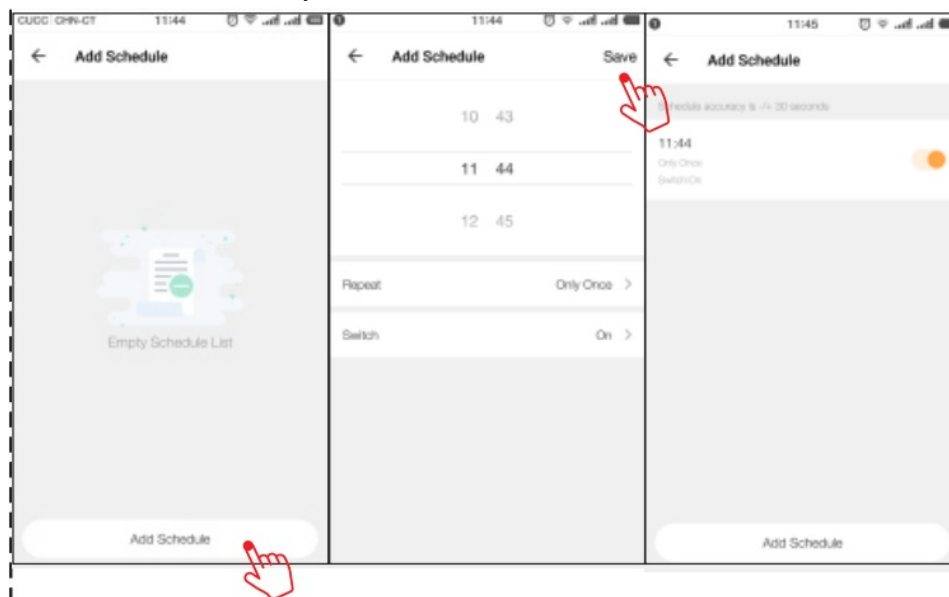


After completing Part Two, you can control the soc with Smart Life APP on this setting page now.  
note: Two socket holes can be controlled separately, long press "Socket1 or Socket2 font" to rename



Try on/off and timer functions on the app to control the socket.

Try timer function to easily set up a schedule to turn on/off the smart socket.  
Note: Two socket holes can be individually timed

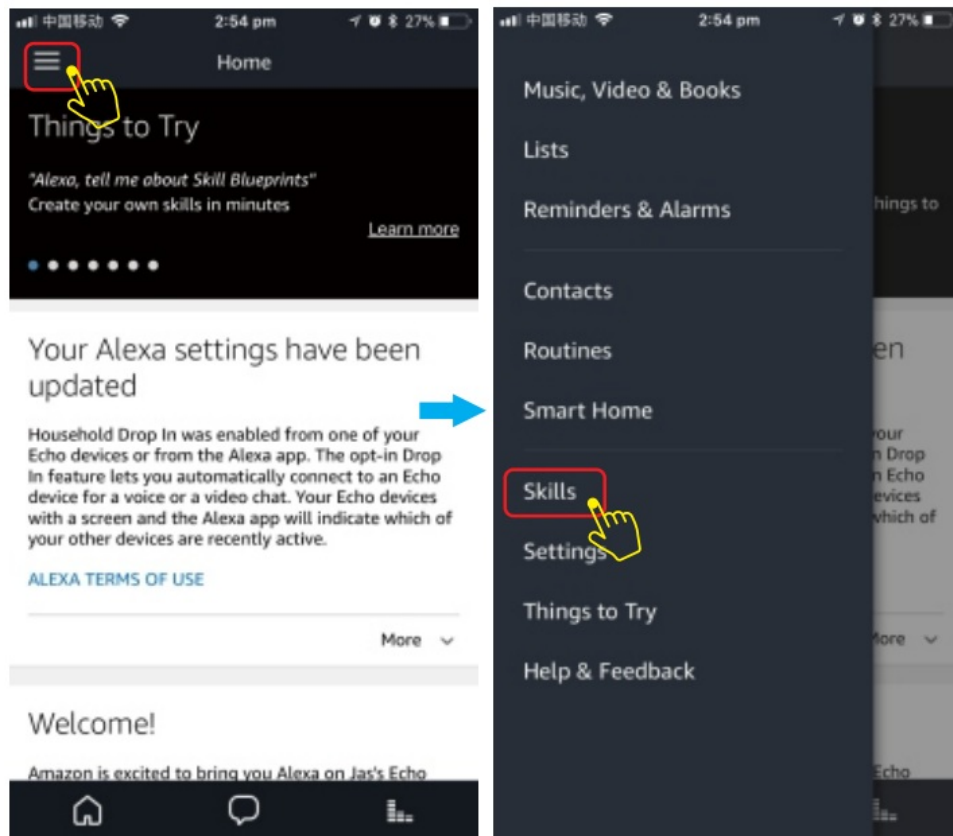


**Note:** If you want to control the light with Amazon Alexa, please continue to read Page 10. If you want to control the light with Google Home, please skip Page 10 and read Page 13 directly. If you want to control the light with IFTTT, please read Page 15 directly.

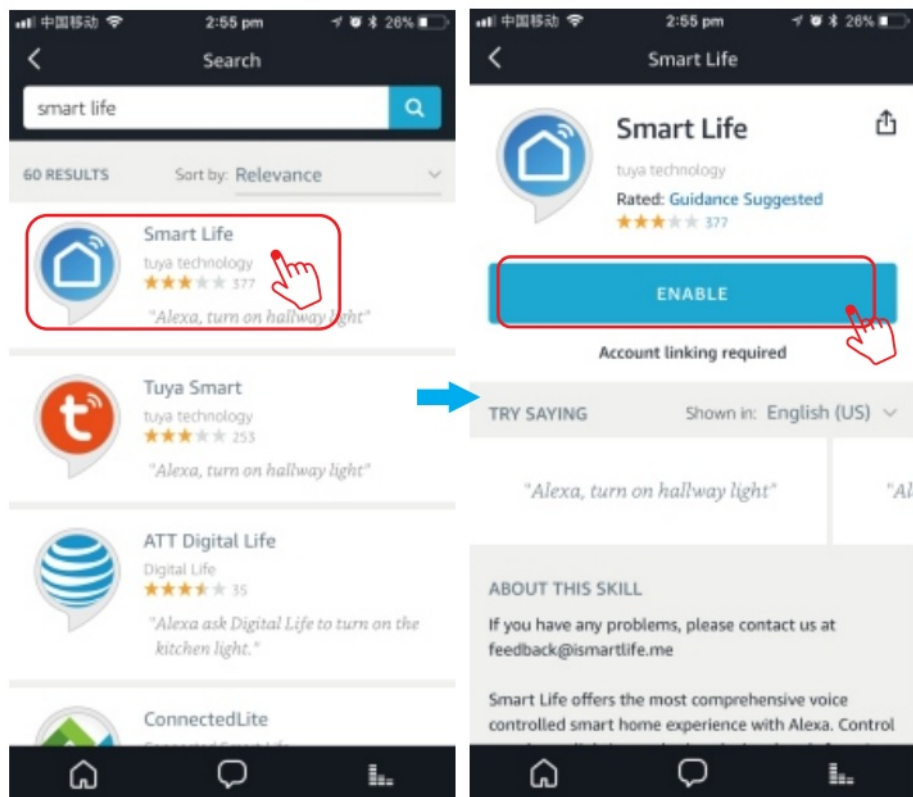
#### How to control the switch with Amazon Alexa?

Please make sure that your Alexa APP is connected to Amazon Echo. and both work together successfully under your Wi-Fi home network.

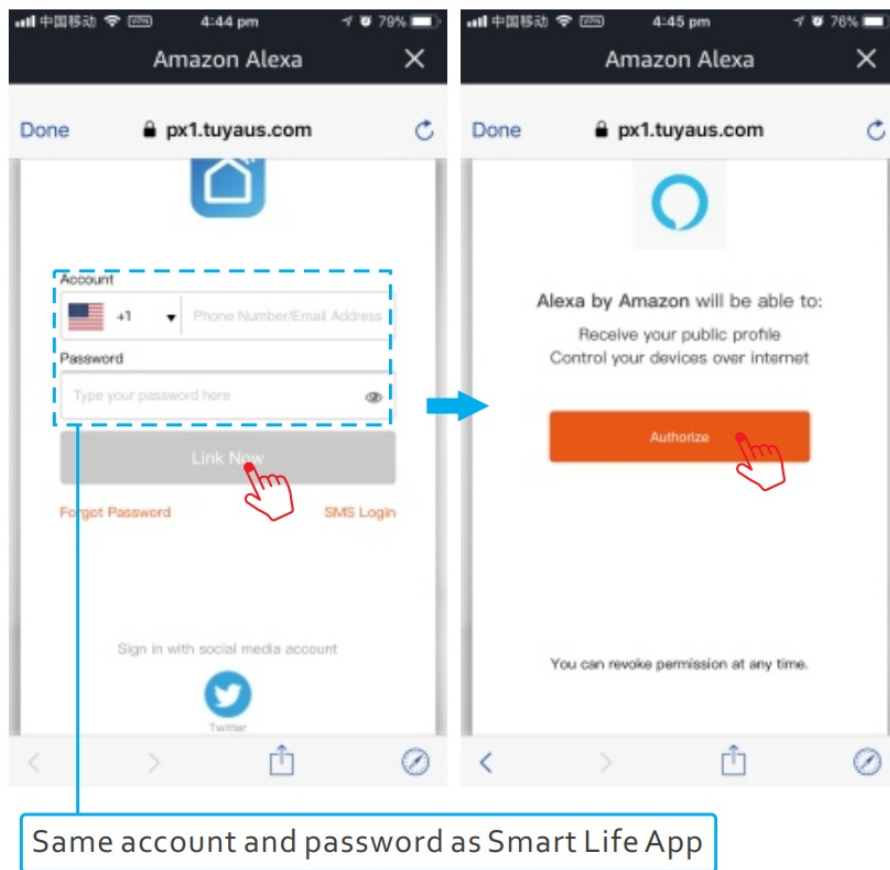
Step. A: Log in to your Alexa APP, tap the top left corner, and tap” Skills”.



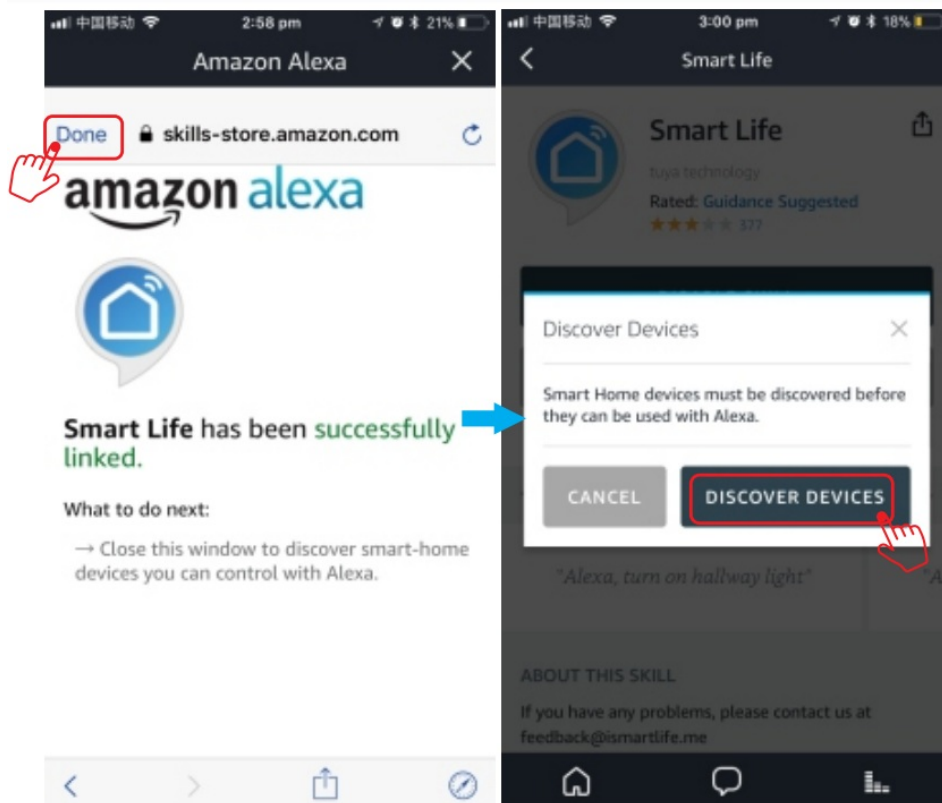
Step. B: Type” Smart Life”, find “Smart Life ” from the search result and tap it to enable the skill.



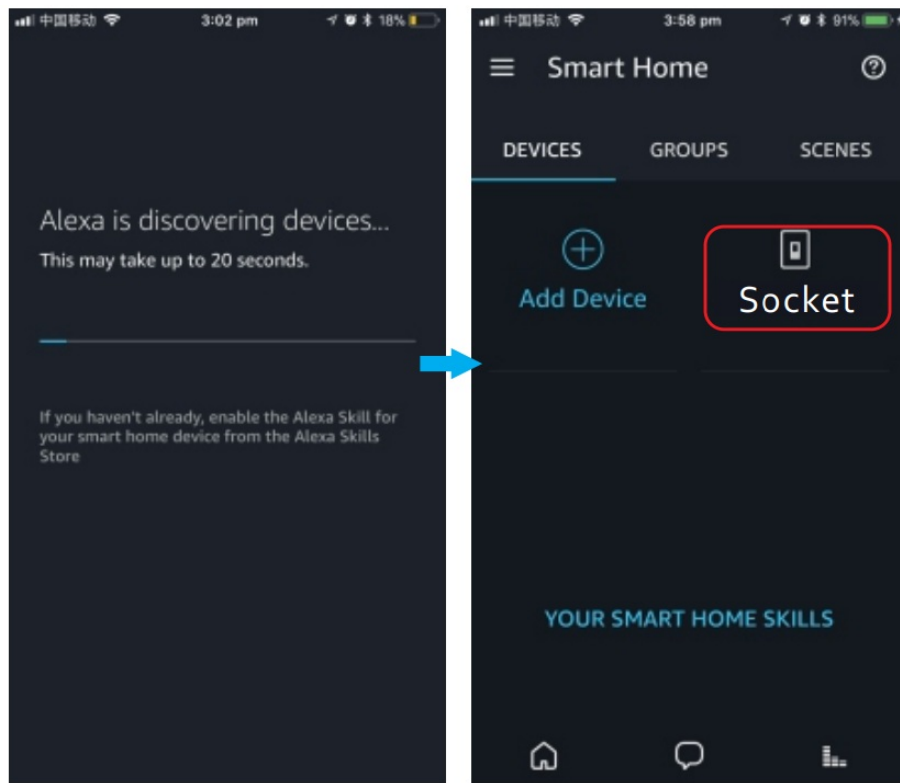
Step. C: Enter your account and password of “Smart Life” app, tap “Link now”.then tap “Authorize” on the next page to bind the Smart Life account to Alexa



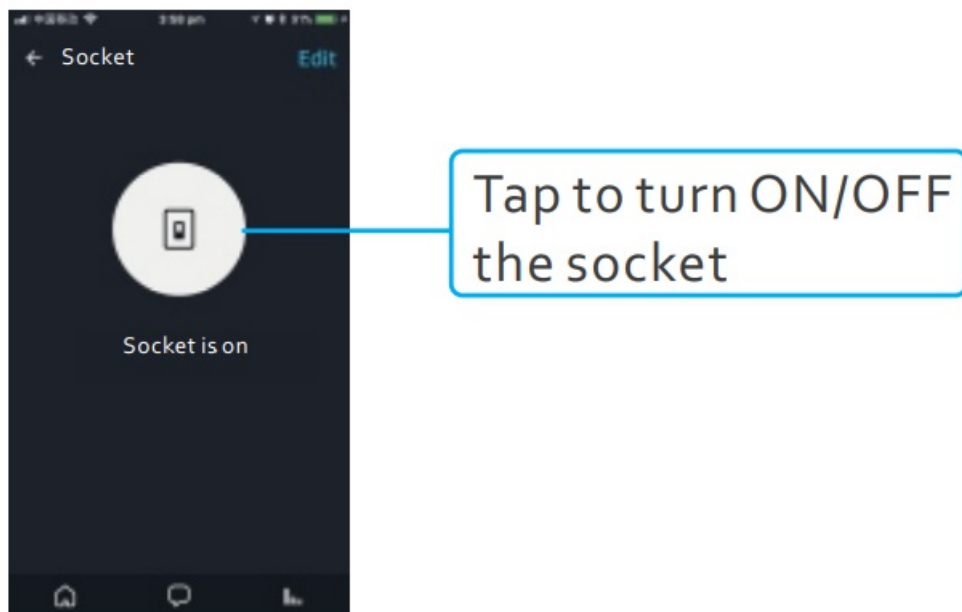
Step .D: Once your Smart Life account is successfully bound to Alexa, the following page will pop up. Tap “Done” on the top left corner, the tap” DISCOVER DEVICES” on the next page.



Step. E: Wait a few seconds for Alexa to detect the switch from the Smart Life app. and you will find the device named” Socket” has been paired to Alexa APP from the “Smart Life” APP.



After Step E is done, you can now control the switch with the Alexa app on this setting page.



Step. F: Now you are able to control the socket via Amazon Alexa.

Try these commands and see what happens by asking Alexa: Alexa, turn on “device name” Alexa, turn off “device name”

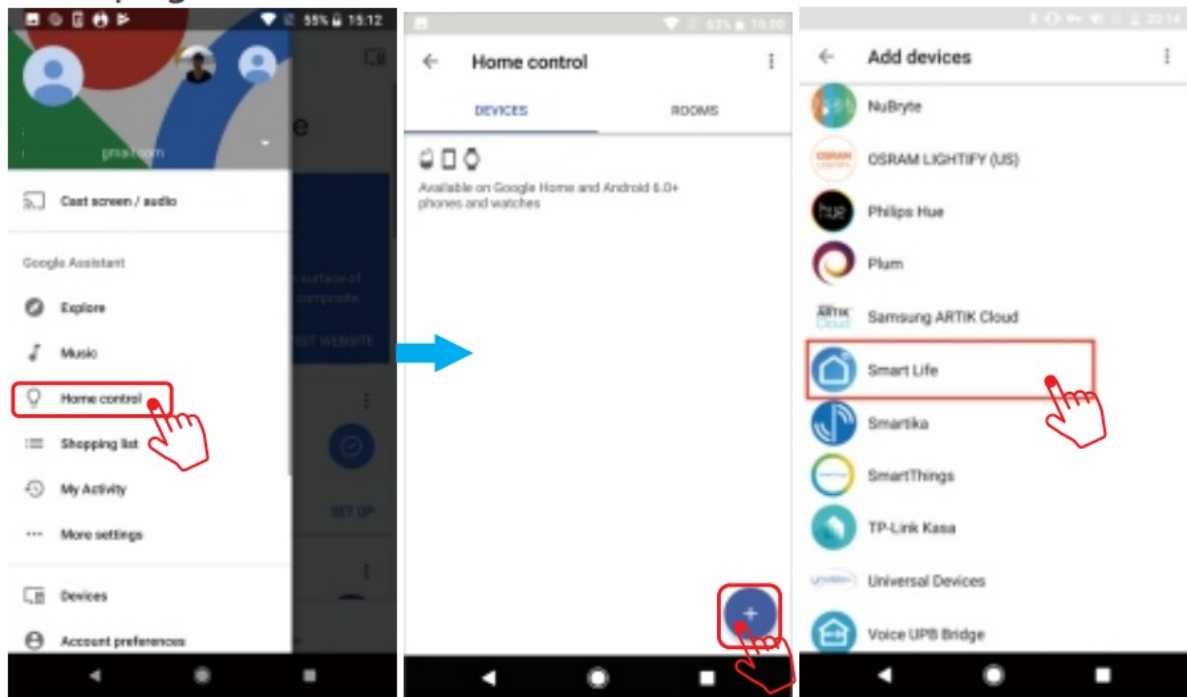
**Note:** The device name is the one you give to the socket on the “Smart Life” App. In this user guide, the device is named” Socket 1”. For example: “Alexa, turn on Socket 1”, ”Alexa, turn off Socket 1” etc. If you also want to control the socket with Google home, you can continue to read the next page.

## How to control the switch with Google Home?

### Preparation:

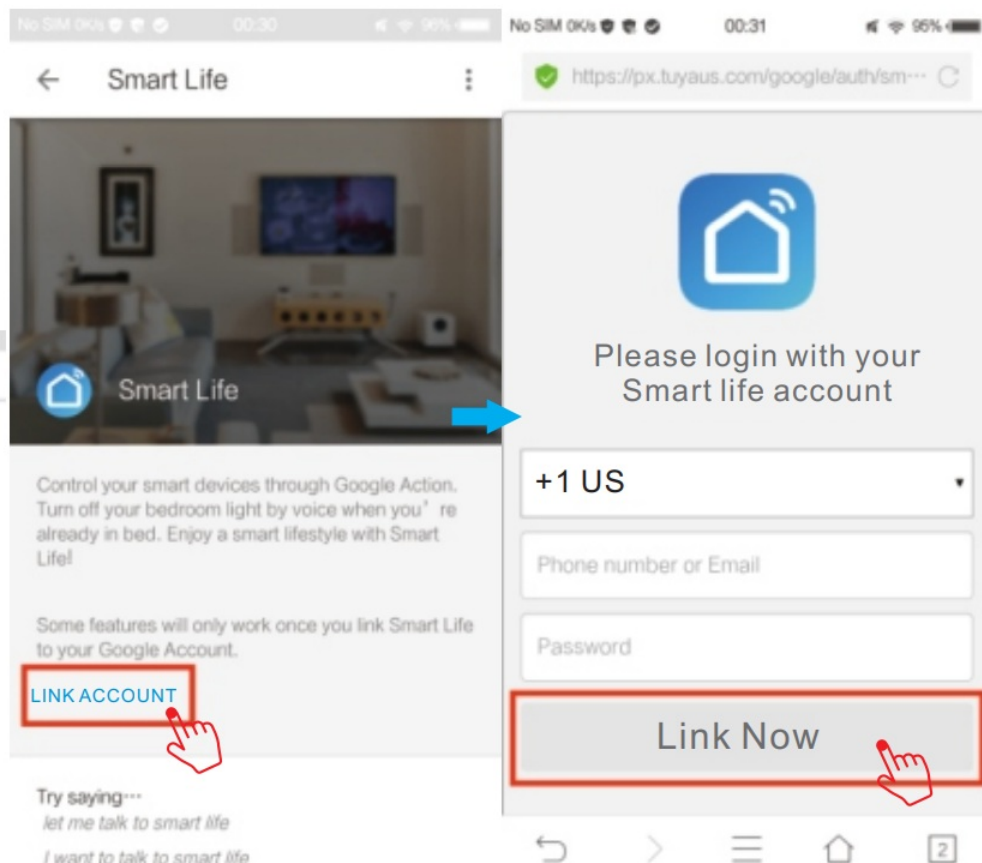
Have downloaded the Google Home app Have registered your Google Account (only support US account) Have paired Smart Socket with Smart life App and named with simply and easily recognizable name. Have finished setting up Google Home Step. A: Open your Google Home APP, tap” Home Control” on the left sidebar page. Step . B: Tap the “+” button on the button right to enter the next page.





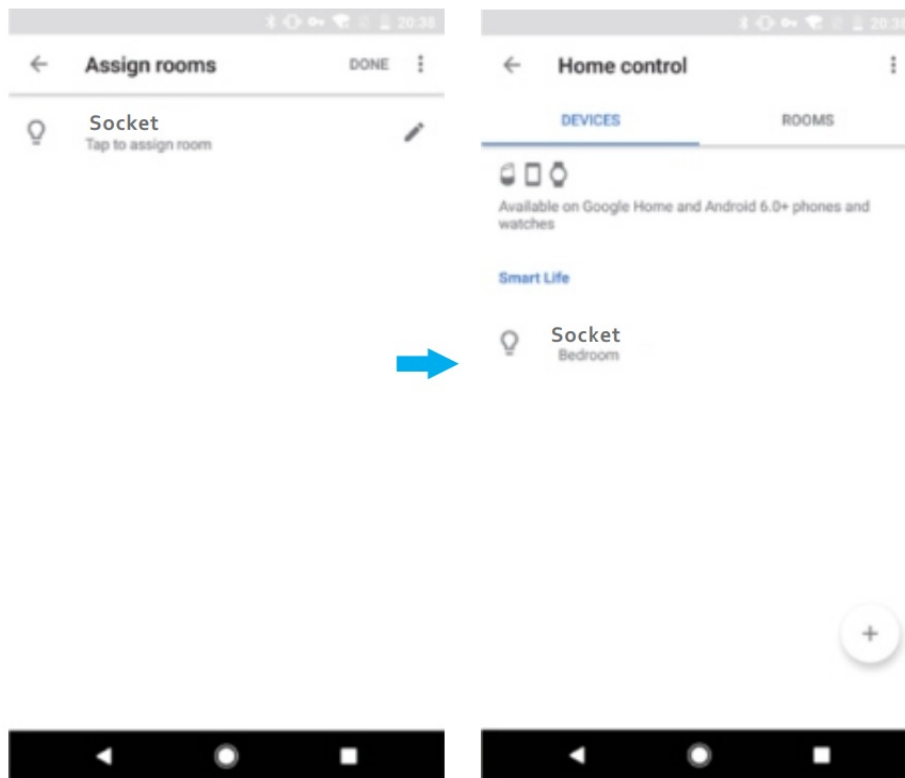
**Step .C:** Find “Smart Life” from the side bar list 

Step .D: Enter your account and password of the “Smart Life” app, tap “Link now”.then tap “Authorize” on the next page to bind the Smart Life account to Google Home.



Step. E: You will find that Google Home has found the device named” Socket” on this page.





Step. F: Now you are able to control the socket via Google Home.

Try these commands and see what happens by asking Google ok, Google, turn on “device name” ok, Google, turn off “device name”

**Note:** The device name is the one you give to the switch on the “Smart Life” App. In this user guide, the device is named” Socket 1”. For example: “ok, Google, turn on Socket 1” “ok, Google, turn off Socket 1” etc.

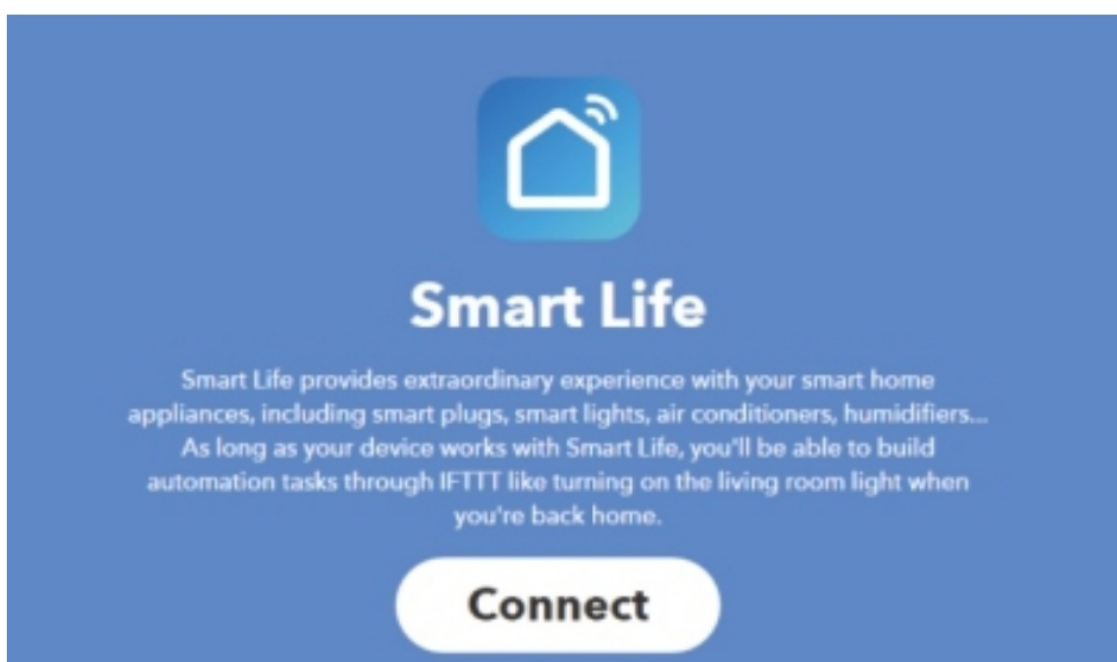
### How to control the switch with IFTTT?

Step. A: Visit the IFTTT official website on your PC and sign in with your IFTTT account.

**Note:** You can also use the IFTTT app and follow similar steps to connect your device to the IFTTT. In this FAQ we take the website setting method for example.

Step. B: Search for “Smart Life”, and then click “Smart Life” service.

Step. C: Click “Connect”, then log in to your Smart Life ID and then tap” Link Now”.



Step .D: Successfully connect your IFTTT account to your Smart Life ID. You are ready to enjoy the IFTTT service of the product now.

**Instructions: 2 methods to use IFTTT with the product.**

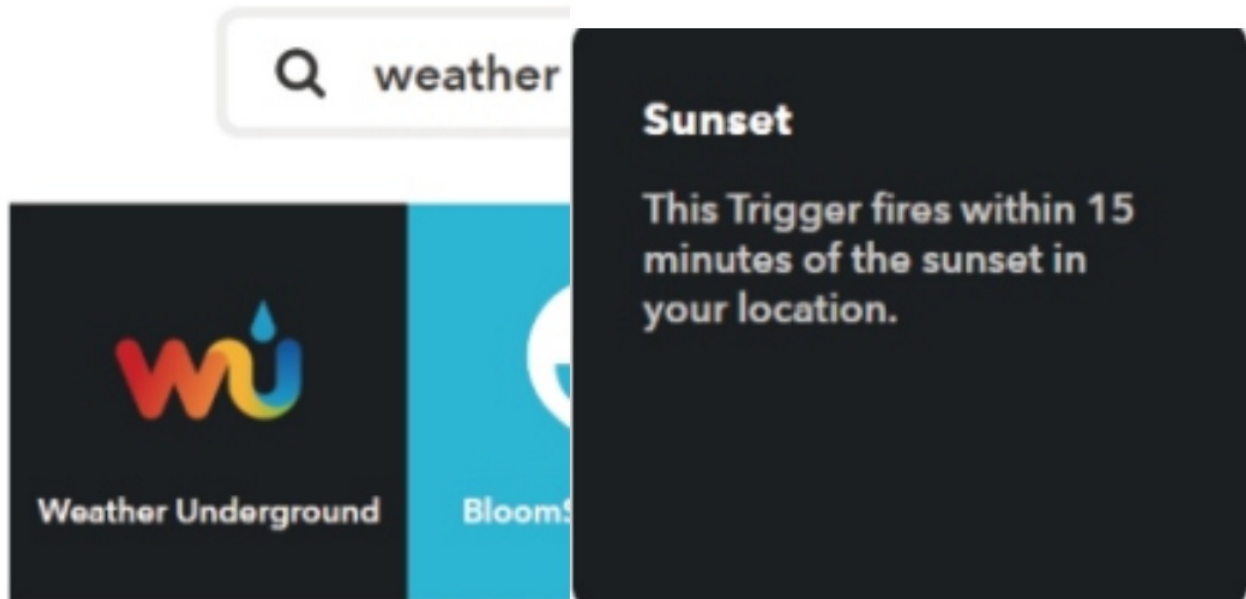
Method 1: On the Smart Life service page, choose an existing Applet you need, turn on it, and then finish the configuration.

Method 2: Create a new Applet on your own.

Click "My Applets" at the top and then click "New Applet" at the right top corner of the webpage to create a new Applet.

Step. A: Create a Trigger.

Tap "this" to choose a Trigger. You can search for "Weather Underground" to choose a Trigger.



We select "Sunset" as the Trigger.

Step. B: Create an Action.

Tap "this" to choose a Trigger. You can search for "Smart Life" to choose a Smart Life Action.



We select "Turn on" of Socket as the Action in this case.

Step . C: New Applet" if sunset, then turn on a light switch" is created as a result.

Note: The Smart Life service can only work when creating an action. You can't use the "Smart Life" as a Trigger.

**FAQ**

Please note when adding device:

1. Confirm the device is powered on.
2. Confirm the device is waiting for network configuration.
3. Confirm that the device, smartphone, and router are as close to each other.

4. Make sure the network function of the router and smartphone are unblocked.
5. Confirm the entered router password is correct.
6. Confirm adding the device is under the 2.4G Wi-Fi channel. Enable the broadcast and not allow to hide Wi-Fi.
7. Confirm that router's encryption method is WPA2-PSK and authentication type is AES, or both are set up as automatic.
8. Confirm that the Wi-Fi name contains letters only.
9. If the router's connected device reaches the amount limit. Please try to turn off some device's Wi-Fi function and configure it again.
10. If the router enables the MAC address filter, please try removing the device from the MAC filter list and make sure the router is allowing the device to be connected.

#### **Does control device under 2G/3G/4G network?**

The device and smartphone must be in the same Wi-Fi environment when adding a device. After successfully adding, the device can be controlled via the mobile network.

#### **How to share my device with family?**

Open App, enter into "shared device", tap "add sharing" to share the device with family.

#### **How to add a device?**

Two methods to add a device: "Default Mode" and "AP Mode". "Default Mode" is set up as default and can switch to "AP Mode"

#### **Why can't I control the load after installing the product?**

1. Please check if the wiring is correct.
2. Please check if there is a neutral line in the cassette (the neutral line is required)
3. Please check if the connected load exceeds the maximum value of the device.

#### **FCC NOTE**

This device complies with Part 15 of the FCC Rules. Operation is subject to the following two conditions:

- (1) this device may not cause harmful interference,
- (2) this device must accept any interference received, including interference that may cause undesired operation.

The manufacturer is not responsible for any radio or tv interference caused by unauthorized modifications or changes to this equipment. Such modifications or changes could void the user's authority to operate the equipment. This equipment has been tested and found to comply with the limits for a Class B digital device, pursuant to part 15 of the FCC Rules. These limits are designed to provide reasonable protection against harmful interference in a residential installation.

This equipment generates, uses, and can radiate radio frequency energy and, if not installed and used in accordance with the instructions, may cause harmful interference to radio communications. However, there is no guarantee that interference will not occur in a particular installation. If this equipment does cause harmful interference to radio or television reception, which can be determined by turning the equipment off and on, the user is encouraged to try to correct the interference by one or more of the following measures:

- Reorient or relocate the receiving antenna.
- Increase the separation between the equipment and receiver.
- Connect the equipment into an outlet on a circuit different from that to which the receiver is connected.
- Consult the dealer or an experienced radio/TV technician for help.

#### **RF warning statement:**

To maintain compliance with FCC's RF exposure guidelines, this equipment should be installed and operated with a minimum distance of 20cm between the radiator and your body.

#### **Documents / Resources**



**[BN-LINK CP-C11 Smart Wall Socket](#) [pdf] User Guide**  
CP-C11, Smart Wall Socket