

BMS Bluetooth Communication Mobile APP System User Guide

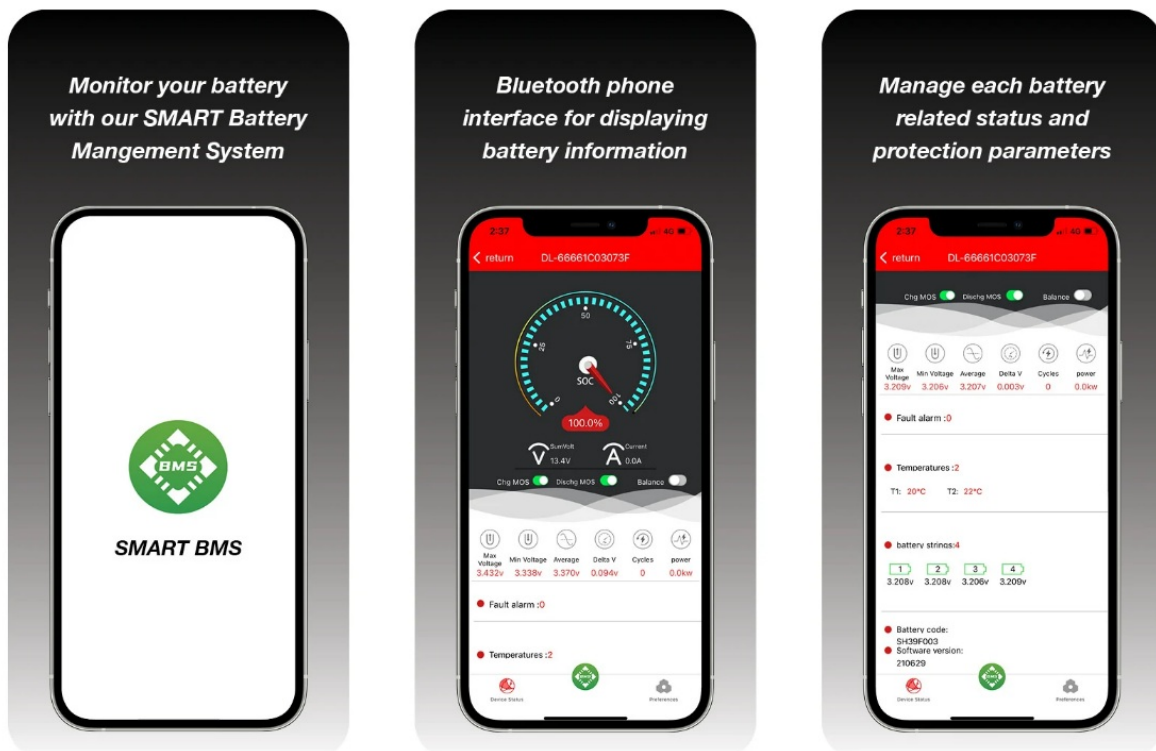
[Home](#) » [BMS](#) » BMS Bluetooth Communication Mobile APP System User Guide 

Contents

- [1 BMS Bluetooth Communication Mobile APP System](#)
- [2 Overview](#)
- [3 System features](#)
- [4 Specification and pin definition](#)
- [5 Operating instructions](#)
- [6 Documents / Resources](#)
 - [6.1 References](#)
- [7 Related Posts](#)



BMS Bluetooth Communication Mobile APP System



Overview

The Bluetooth communication mobile APP system mainly connects the dedicated Bluetooth device through the Bluetooth function of the mobile phone to enable communication between the Bluetooth device and the BMS. In this way, users can directly detect BMS information through their mobile phones and use reading, management, inquiry and management functions, thereby replacing dedicated BMS equipment and software. Bluetooth communication mobile APP system includes real-time data reading, protection parameters, battery cell features, acquisition board settings, temperature protection, system settings and inquiry functions.

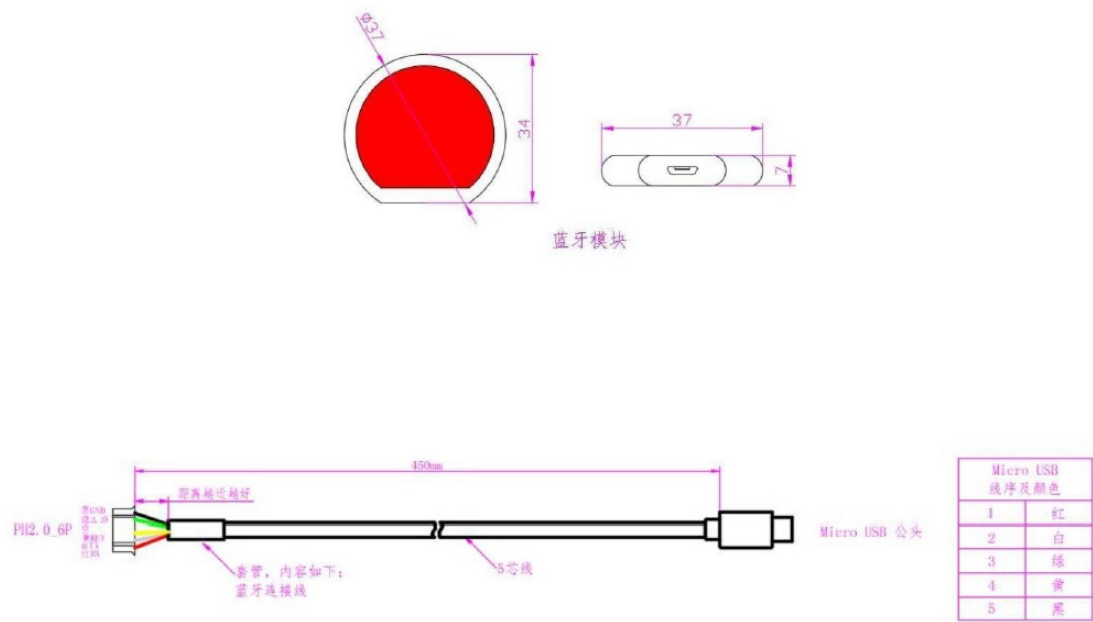
The main functions of the system are:

1. Parameter reading: alarm fault information, number of temperatures, number of battery strings.
2. protection parameters: monomer over-voltage protection, single under-voltage protection, overall over-voltage protection, overall under-voltage protection, differential pressure protection, charging over current protection, and discharge over current protection.
3. battery cell features: battery type, rated capacity, monomer reference voltage, sleep mode waiting time, SOC setting, balanced opening voltage, and balanced opening pressure difference.
4. Acquisition board setting: number of acquisition boards, number of acquisition board unit 1, number of acquisition board unit 2, number of acquisition board unit 3, number of acquisition board unit 1 temperature, number of acquisition board unit 2 temperature, number of acquisition board unit 3 temperature.
5. Temperature protection: charging high-temperature protection, charging low-temperature protection, discharge high-temperature protection, discharge low-temperature protection, temperature difference protection, and power tube temperature protection.
6. System settings: charging switch, discharge switch, restart system, factory reset, current to zero, reset password.

System features

1. Alarm prompt: Alarm fault check. The alarm prompt will be automatically eliminated after the fault is resolved.
2. When the user opens the software, if the user does not turn on the Bluetooth function, it will automatically prompt you to turn on the Bluetooth of the phone, unplug the phone or automatically disconnect the Bluetooth connection during sleep mode.

Specification and pin definition

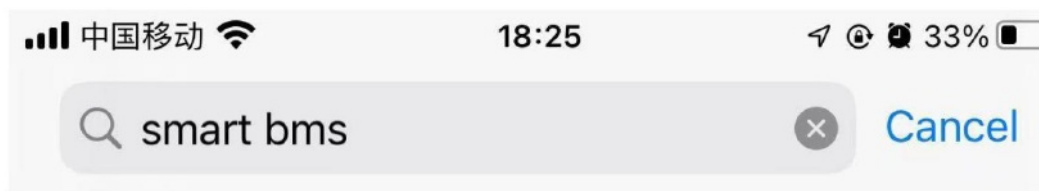


Bluetooth cable interface definition description cable colour

	cable colour		Pin definition	Pin
PH2.0 Colour and definition	Black	GND	GND	1
	Green	3.3V	Power supply 3.3v	2
	Balnk	/	/	3
	Yellow	S1	Bluetooth button	4
	White	TX	Communication sending end	5
	Red	RX	Communication receiving end	6
Micro USB Colour and definition	Red			1
	White			2
	Green			3
	Yellow			4
	Balnk			5

Operating instructions

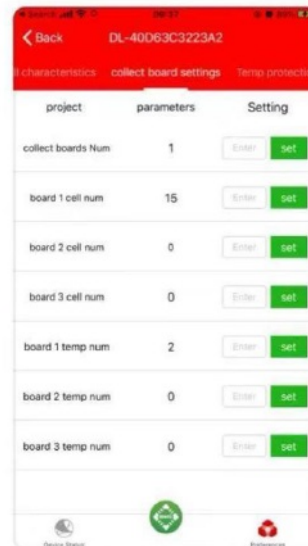
Enter the mobile app store, search for “SMART BMS”, download and install it on the mobile desktop (take IOS as an example)



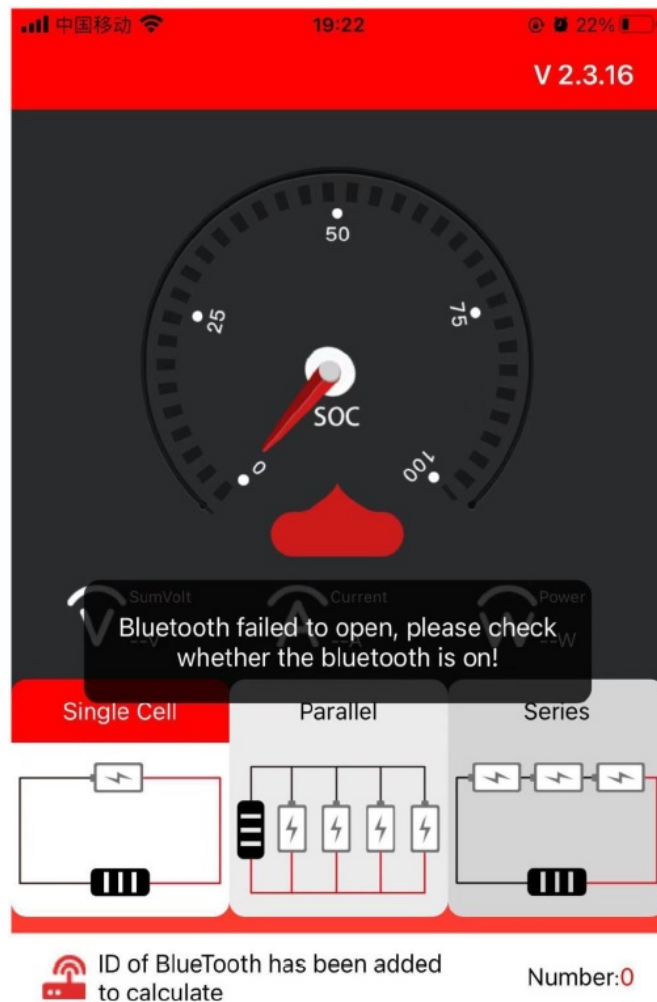
SMART BMS

工具

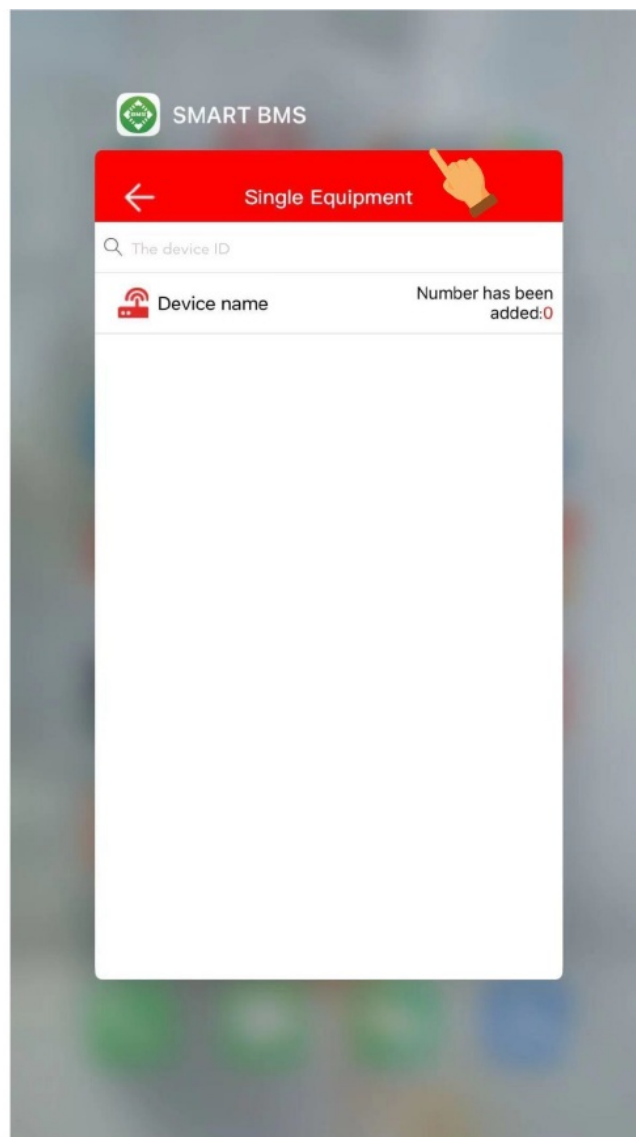
★★★★☆ 10



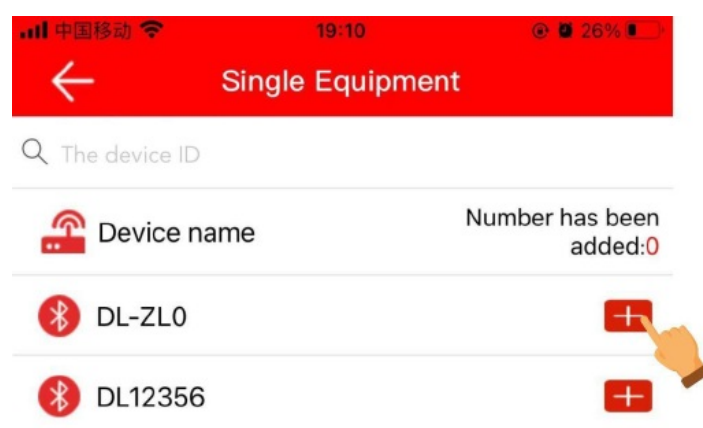
Open the downloaded “SMART BMS” APP and Connect to Bluetooth



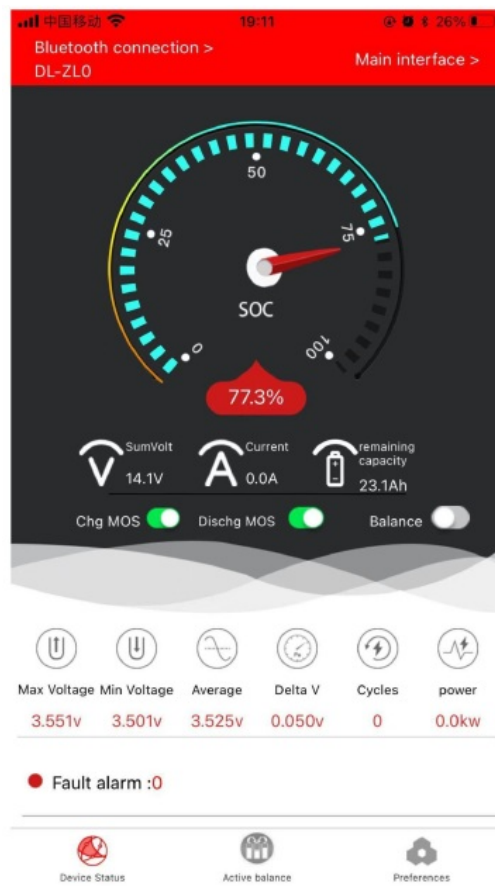
Quit the APP background



Return to the mobile phone desktop and re-enter the “SMARTBMS” APP, wait a few seconds until the phone automatically displays “Connected”, and then click the device.




Enter the Bluetooth APP interface and read real-time data



Enter "Parameter Settings" to set various parameters(The password is 123456)



Documents / Resources

 <p>BMS Bluetooth Instructions</p>	<p>BMS Bluetooth Communication Mobile APP System [pdf] User Guide Bluetooth Communication Mobile APP System, Communication Mobile APP System, Mobile AP P System, APP System, System</p>
---	--

References

- [User Manual](#)

[Manuals+](#), [Privacy Policy](#)

This website is an independent publication and is neither affiliated with nor endorsed by any of the trademark owners. The "Bluetooth®" word mark and logos are registered trademarks owned by Bluetooth SIG, Inc. The "Wi-Fi®" word mark and logos are registered trademarks owned by the Wi-Fi Alliance. Any use of these marks on this website does not imply any affiliation with or endorsement.