



BMC Mini App User Manual

[Home](#) » [BMC](#) » BMC Mini App User Manual 



App Manual
BMC Mini App

CE 0123

Contents

- 1 Software Profile**
 - 1.1 Intended Use
 - 1.2 Operating environment
 - 1.3 Icon Profile
- 2 Use of Software**
 - 2.1 Software Installation
 - 2.2 Bluetooth Management
 - 2.3 Report
- 3 Options of the Patient Menu and Corresponding Descriptions**
- 4 Documents / Resources**
- 5 Related Posts**

Software Profile

Intended Use

The M1 Mini Auto CPAP system is a CPAP (Continuous Positive Airway Pressure) device designed for the treatment of adult Obstructive Sleep Apnea (OSA) only, either in the hospital or at home.

BMC Mini App is the control software for the Mini Serial ventilator. The user can set the parameters of the ventilator, and control the running state of the ventilator with this software. The ventilator can upload the running data to BMC Mini App where they can be displayed, stored, and uploaded to the cloud platform. BMC Mini App can also obtain the remote parameter setting of the cloud platform and realize the online firmware upgrade of the ventilator.

Operating environment

BMC Mini App includes the Android version and IOS version.

1.2.1 Android version

a) Hardware requirements

CPU Snapdragon 400 series and above, MT67XX series and above, Kirin 8 series and above, and other mainstream chips;

Memory: 1G and above;

Hard disk: 16G and above;

Display: 4.0 inches and above, resolution 1136 * 640 and above;

Interface: Compatible with BLE4.2, cellular network, or WiFi network;

b) Operating system software platform: Android4.3 and above.

1.2.2 iOS version

a) Hardware requirements

CPU A6 and above;

Memory: 1G and above;




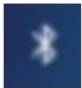
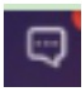

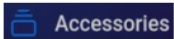
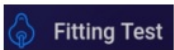


Hard disk: 16G and above;

Display: 4.0 inches and above, resolution 1136 * 640 and above;

Interface: Compatible with BLE4.2, cellular network, or WiFi network;

b) Operating system software platform: iOS9.0 and above.

Icon Profile

Icon	Description
 Sleep  Report  More	Sleep icon, click it to enter into the sleep therapy interface.
	Report icon, click it to enter the data report interface.
	More icons, click it to enter into interface of more functions.
   Settings  Accessories  Fitting Test  	Bluetooth icon, click it to enter into the Bluetooth management interface.
	Message icon, click it to enter into the message management interface.
	Parameter setting icon, click it to enter into parameter setting interface.
	Consumables setting icon, click it to enter into the consumables setting interface.
	Wearing the test icon, click it to enter into the mask-wearing test interface.
	Report sharing icon, click it to share the report.
	Report time selection icon, click to select the time period of a report.

Use of Software

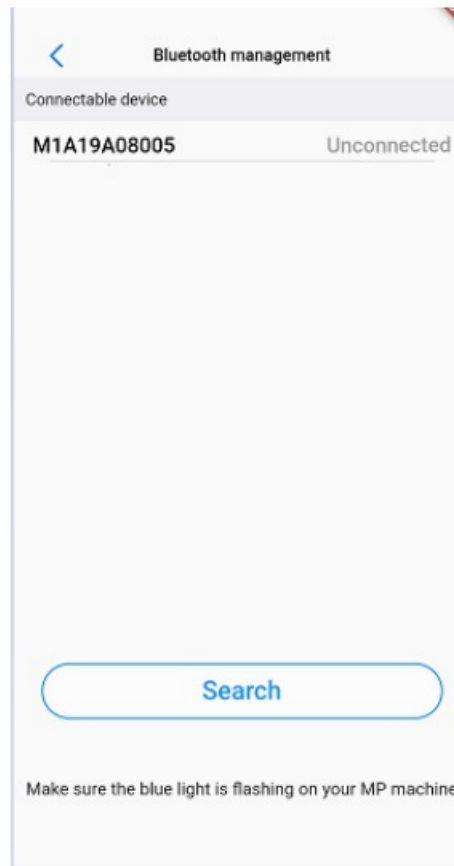
Software Installation

Search BMC Mini App (BMC Mini) in the Software App Store. Click to download and install it.

Bluetooth Management

2.3.1 Bluetooth Connection

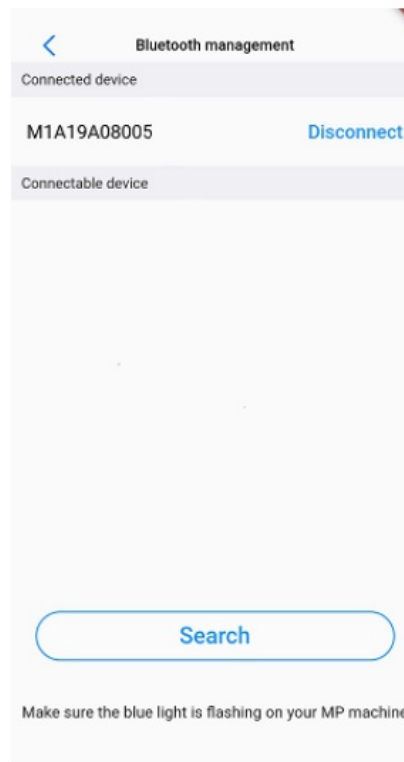
- Switch on, click the Bluetooth button of the ventilator, and the Bluetooth status light starts flashing, showing the ventilator is in the state of waiting to be connected;
- Open BMC Mini App, click the Bluetooth button to start searching for the device, and select the Mini device you searched in the device list (the device name is “device serial number”, you can see the device serial number on the device nameplate) to connect;



- After the above operation, the Bluetooth connection is successful, and the Bluetooth working status light on the host should be always on.

2.3.2 Bluetooth Maintenance

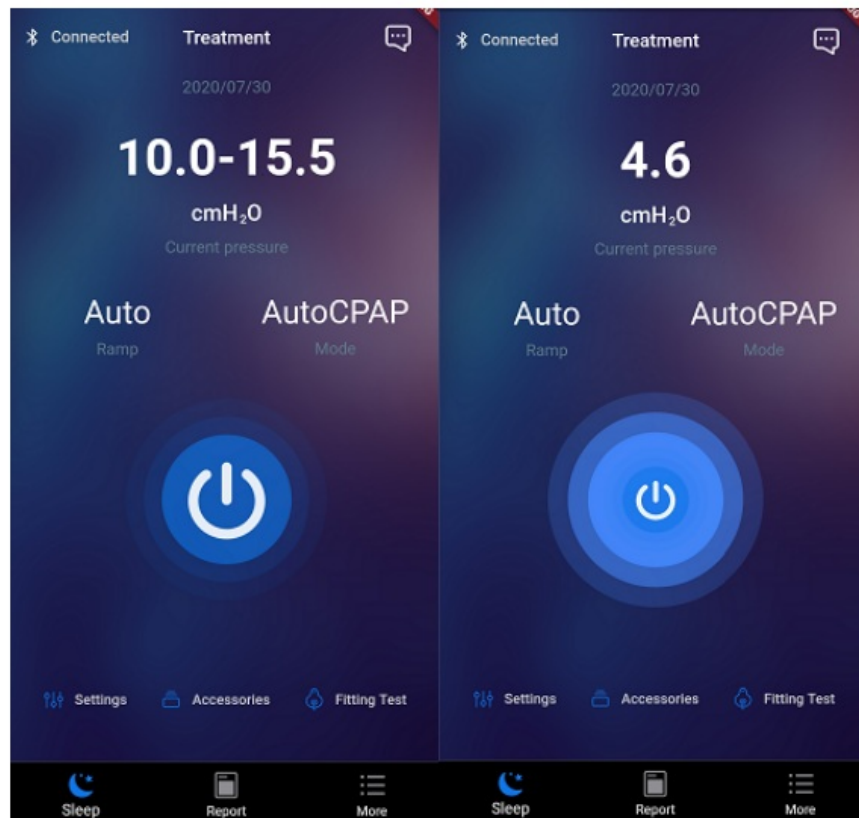
You can disconnect Bluetooth and re-select other devices to connect.



Sleep Treatment

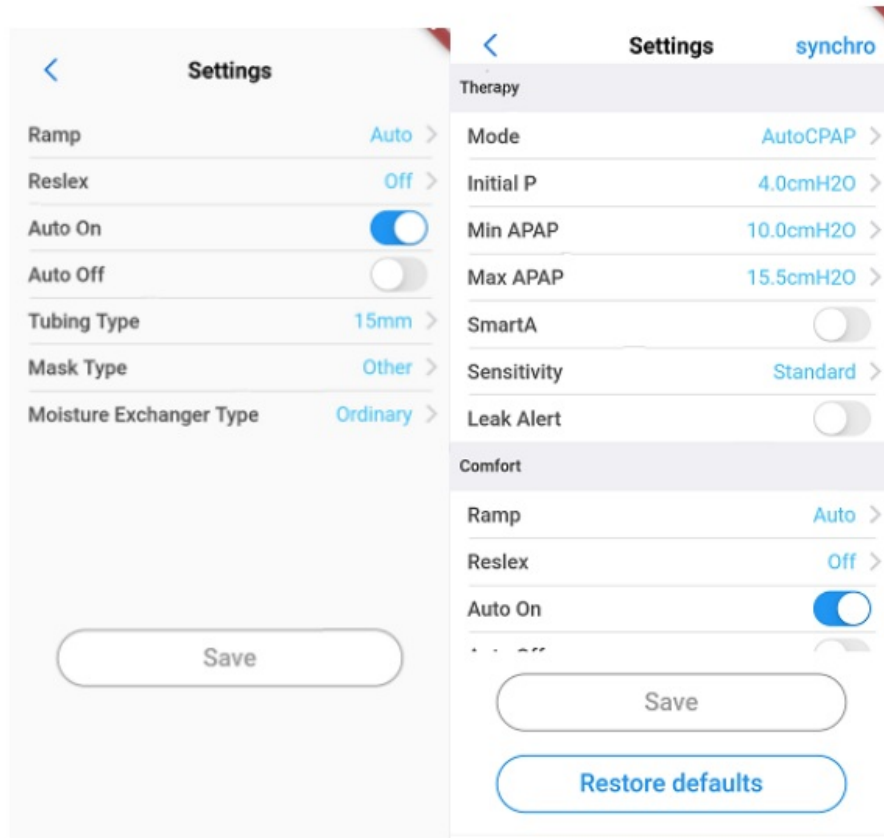
2.4.1 Device Control

- When connecting with Bluetooth, click the treatment button to display the current working pressure and delay time of the ventilator in real-time;
- Unable to access the report page and other pages during treatment.



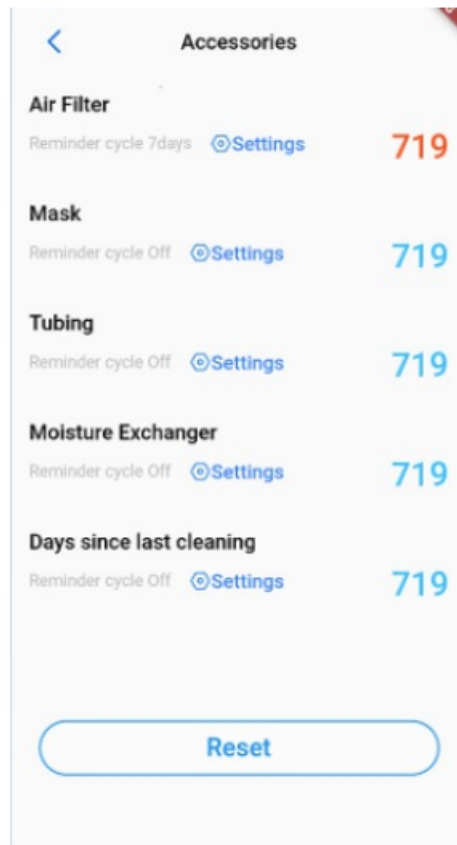
2.4.2 Parameter Setting

1. When the Bluetooth is connected, click the parameter setting button to enter the user parameter setting page; if the Bluetooth is not connected, a pop-up window will appear, click the confirmation button to enter into the Bluetooth management page;
2. Click the parameter setting button and the treatment button at the same time, you can enter the doctor parameter setting page;
3. Unable to modify maintenance parameters in the doctor parameter setting page during treatment;
4. If the parameters in the parameter setting page are modified but are not saved, a pop-up window will appear when clicking the return button, click cancel to stay in the parameter setting page, and click to determine the return to sleep page.



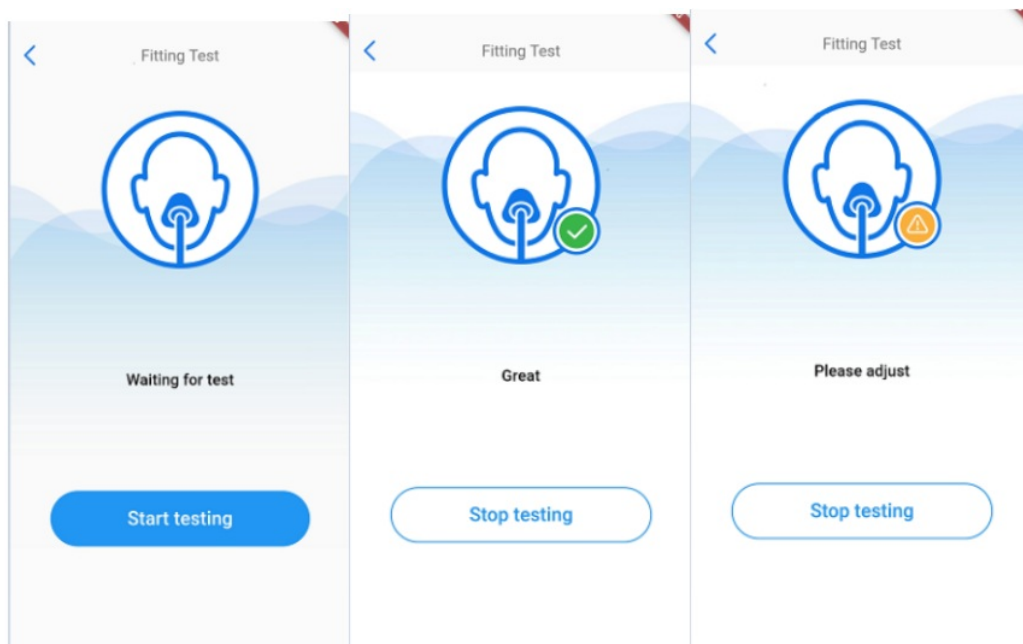
2.4.3 Consumables Setting

- When Bluetooth is connected, click the consumables settings button to enter into the consumables settings page, if Bluetooth is not connected, a pop-up window will appear, click the confirmation button to enter into the Bluetooth management page;
- Click the setting button to select the reminder cycle. If the number of days in the reminder cycle is less than the actual number of days in use, the actual number of days in use will be shown in orange-red and otherwise blue;
- The parameters may be reset by clicking the reset days button. Clicking the reset button to makes the number of actual days become 0.



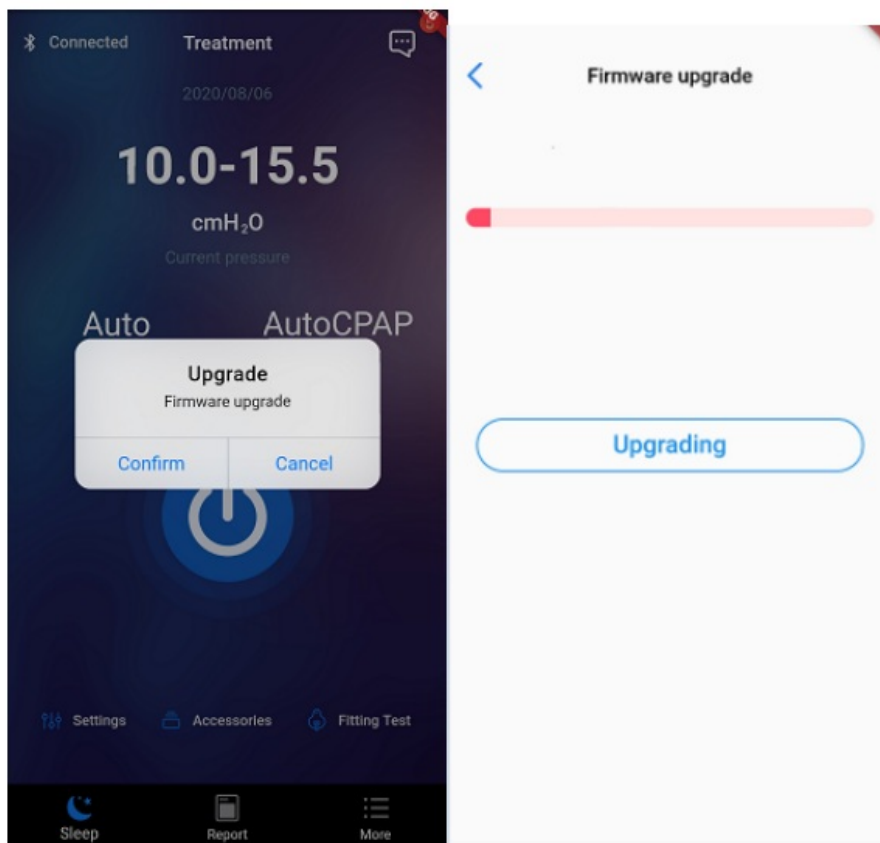
2.4.4 Wearing Test

1. When Bluetooth is connected, click the consumables settings button to enter the consumables setting page, if Bluetooth is not connected, a pop-up window will appear, Click the confirmation button to enter the Bluetooth management page;
2. Put on the mask and click the start test button to view the current wearing status;
3. Adjust the mask according to the interface prompt.



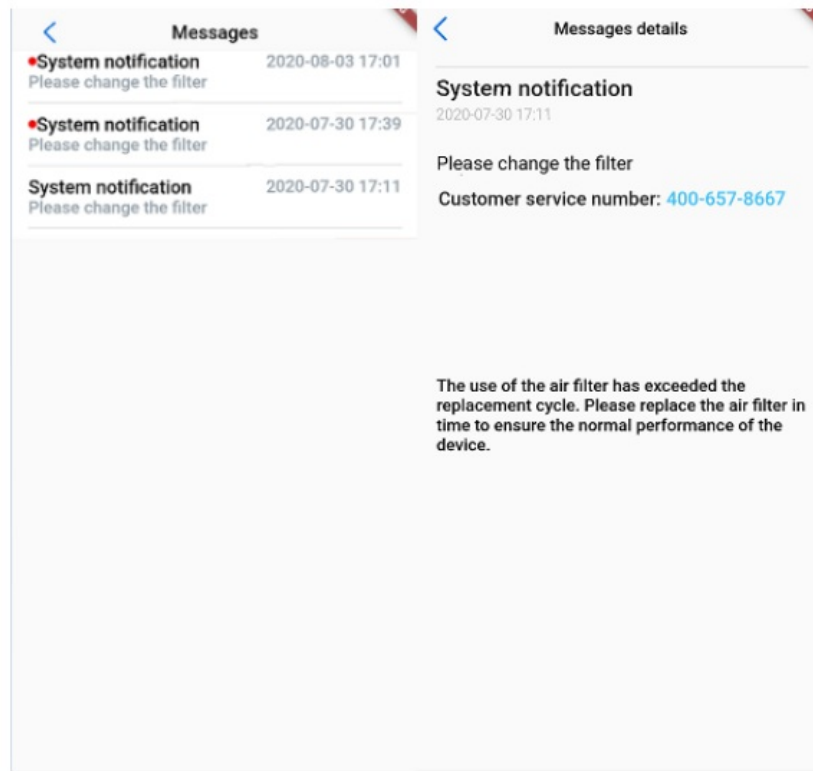
2.4.5 Firmware Upgrade

- When the Bluetooth is connected, it will automatically detect whether the firmware the upgrade is required, and a pop-up window will appear once entering into the sleep page;
- Click the OK button to enter the firmware upgrade page;
- Click the upgrade button to upgrade the firmware and display the upgrade progress bar.
The screen will automatically stay on.
- After the upgrade is accomplished, Bluetooth will be disconnected, and a pop-up window of re-connection will appear. It will enter into the sleep page when clicking the confirmation button after a successful upgrade.



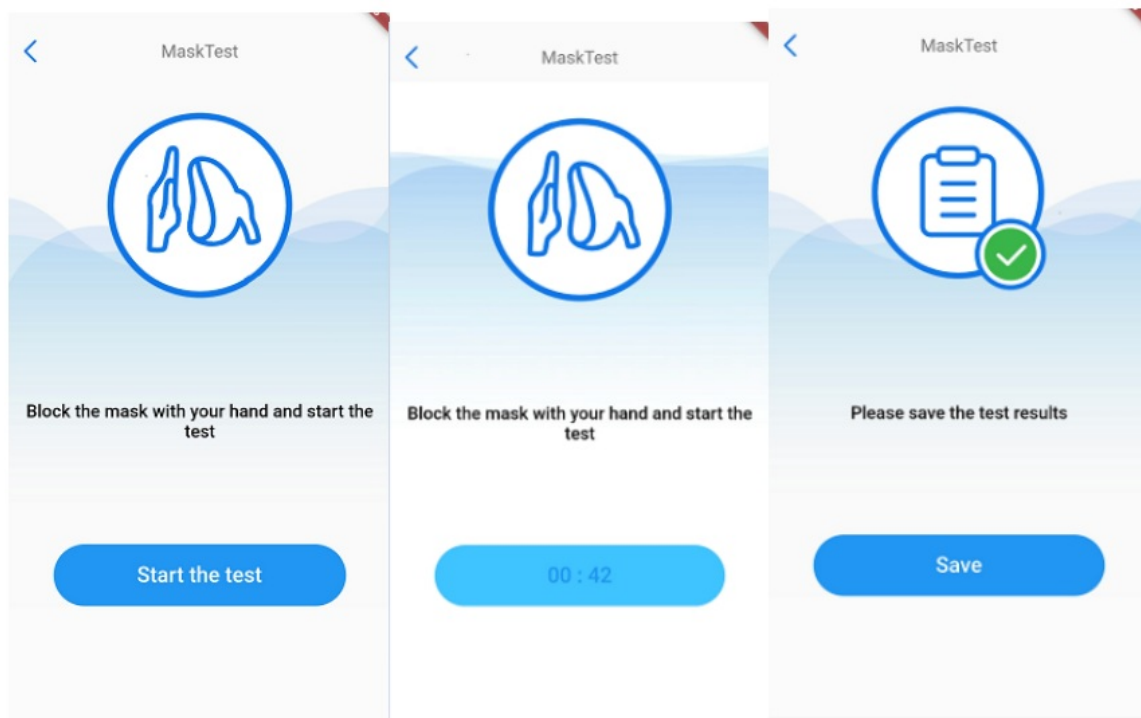
2.4.6 Viewing Message

- Click the sleep page message icon, and enter into the message interface to view the message list;
- When the message is not read, the red dot is displayed at the front end of the message;
- Click on the message, and enter the message details page to view the message details;
- Slide the message to the left, and the delete button appears. Click the button, this message will be deleted.
- At most, 50 messages can be displayed.



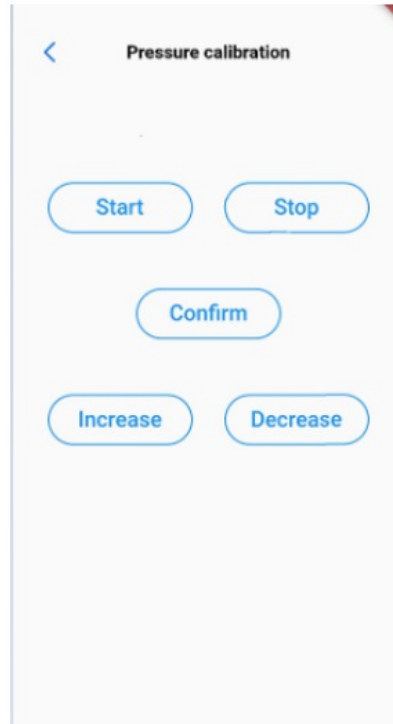
2.4.7 Mask Test

- In the option of maintenance parameter in the doctor parameter setting page, click the mask test button to enter into the mask test page;
- Click the start test button for a 40-second test;
- If clicking the button again or the return button above during the test, a pop-up window will appear;
- After the test, click the save button and return to the sleep page



2.4.8 Pressure Calibration

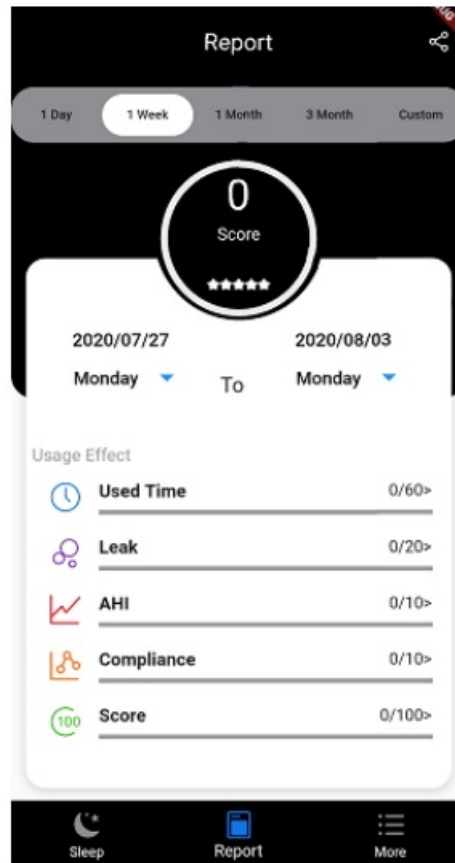
- Click the pressure calibration button in the maintenance parameter option of the doctor parameter set to enter into the pressure calibration page
- Click on the start button to start the pressure calibration function, and click boost pressure, reduce pressure to carry out related operations
- Click the stop button to stop pressure calibration



Report

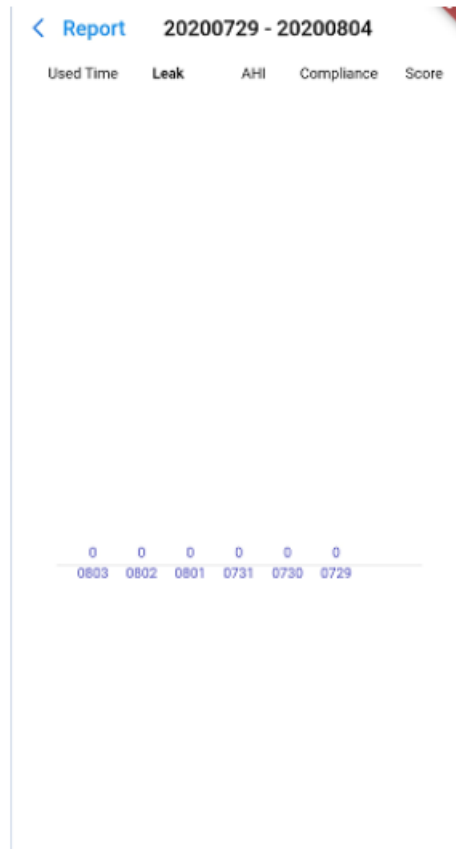
2.5.1 Report View

1. Click the report button in the bottom navigation bar to enter the report page;
2. When Bluetooth is connected, this page will automatically check whether there are data to be upgraded; if any, a pop-up window will appear;
3. Click the bottom of the right side of the week button, a pop-up selection button will appear for date selection.



2.5.2 HistogramView

- Click the effects option on the report page to view the histogram page;
- Click time on the top, and a pop-up time selection box will appear for the selection of customized time.

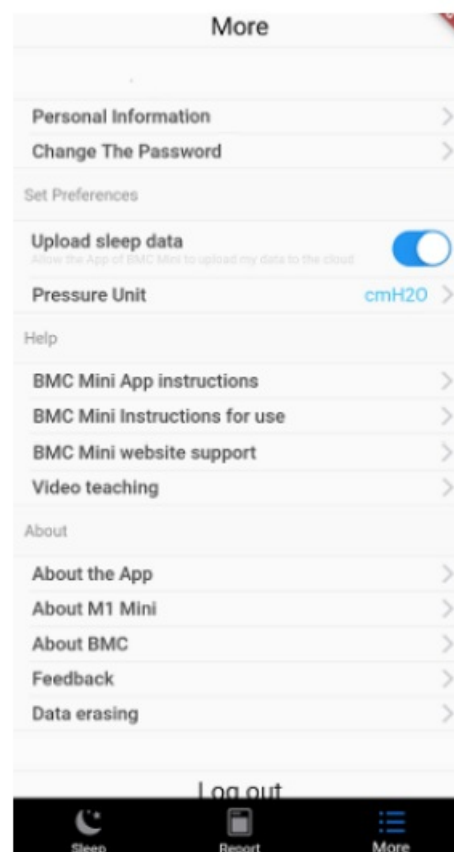


2.5.3 Report Sharing

Click on the Share icon, and you can choose to share ways to share the report to other applications.

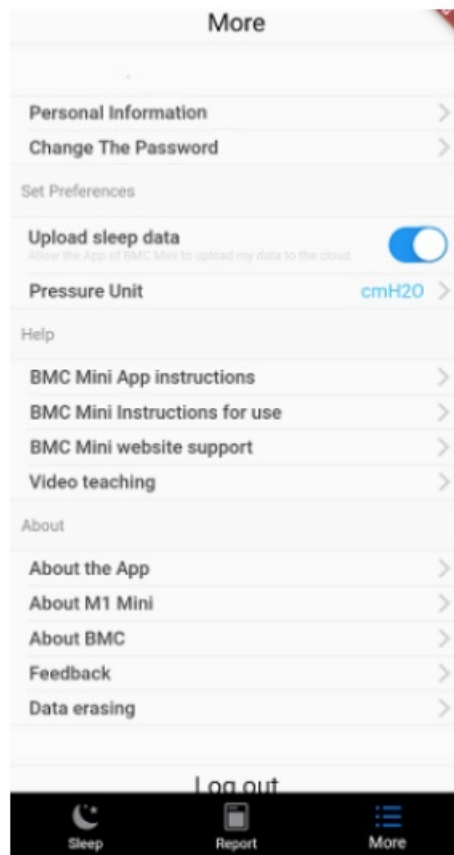
2.6 More Functions

In the interface of more functions, you can set up and view more information.



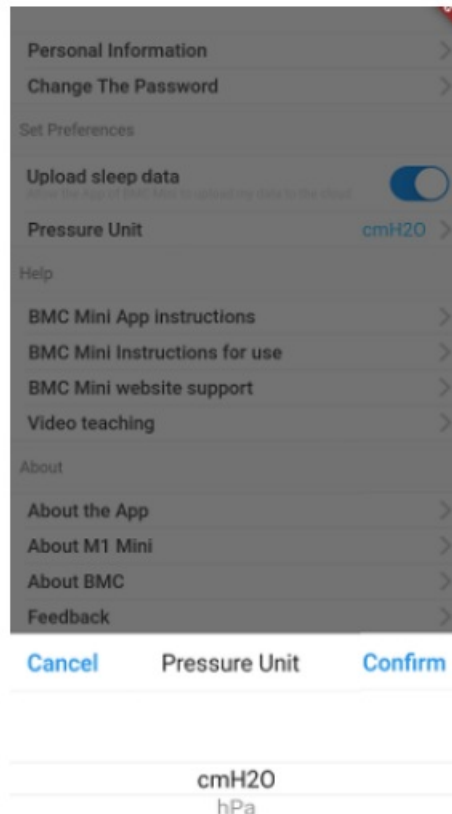
2.6.3 Data Uploading

- Users choose the switch on whether to upload sleep data, if it is closed, the treatment data will not be actively uploaded, and the cloud will not record the analysis of user's treatment data;
- The upload data switch is enabled by default.



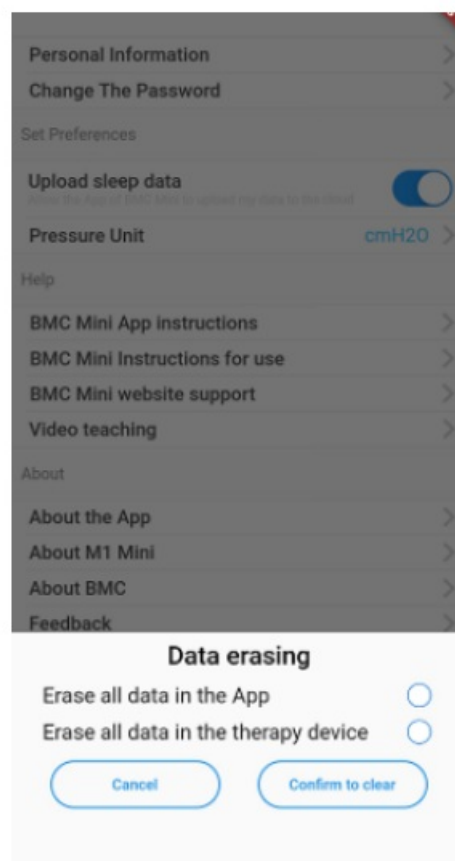
2.6.4 Unit Setting

1. When a user selects the pressure units, the selection box will pop up from the bottom;
2. According to the pressure unit selected by the user, the unit displayed on various pages will be changed.



2.6.5 Data Erasure

- Able to choose to erase control software data or ventilator data;
- When Bluetooth is not connected, the option of erasing the ventilator data is not available;



2.6.6 Instructions for Use

2.6.6.1 BMC Mini APP Instructions for Use

- Click the BMC Mini APP instructions option to enter the instructions page;
- Able to turn the page to view by sliding.



2.6.6.2 BMC Mini Instructions for Use

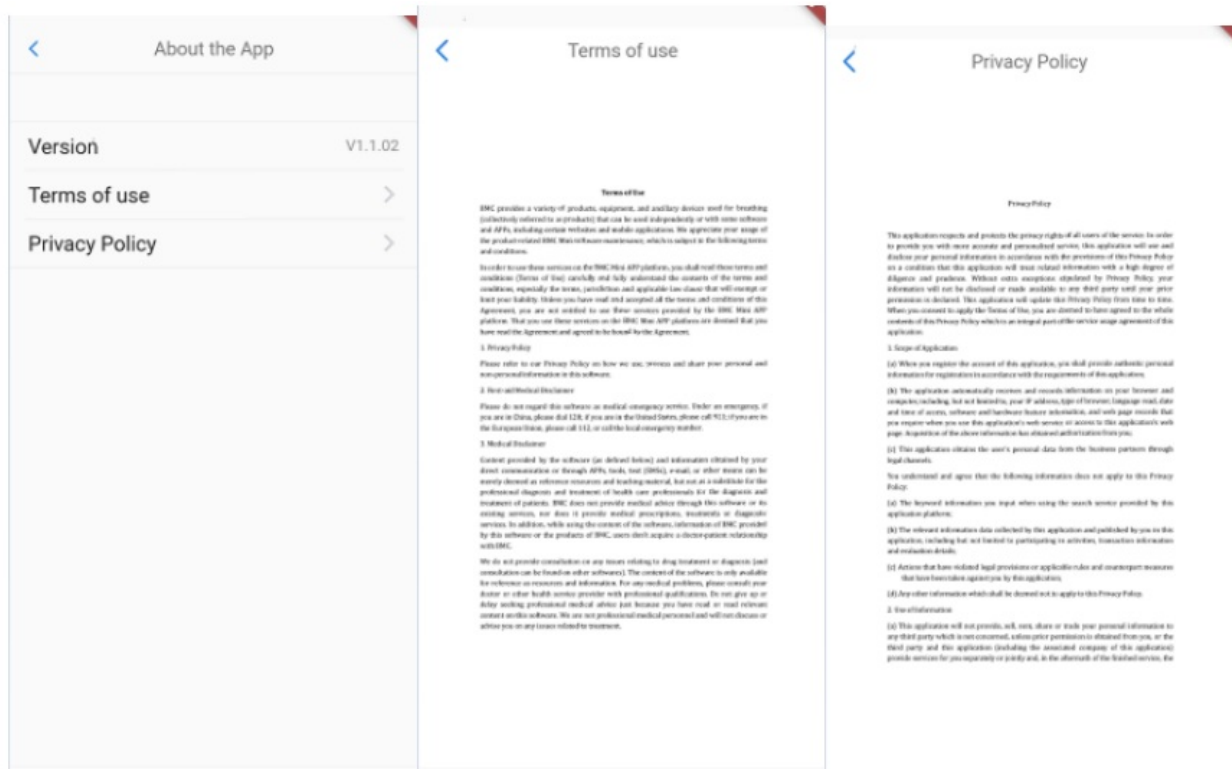
1. Click the BMC Mini instructions option to enter the instructions page;
2. Able to turn the page to view by sliding.



2.6.7 About

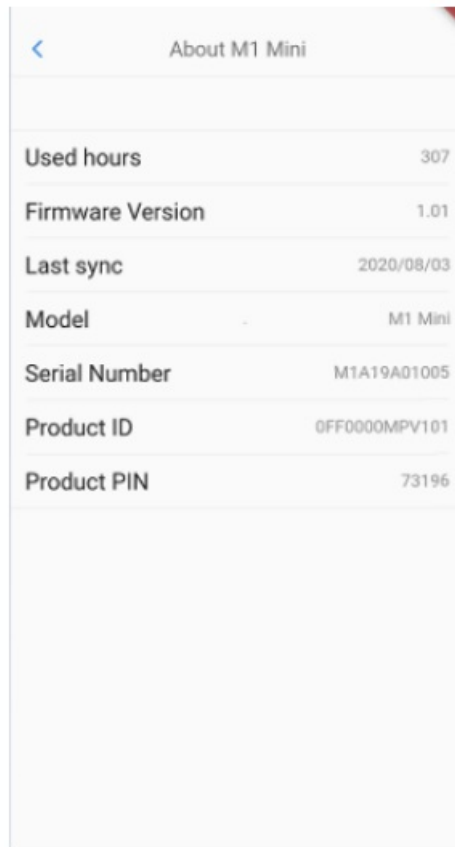
2.6.7.1 About APP

- Click on the About APP button and enter the About APP page;
- Click the option on Terms of Use to view the Terms of Use;
- Click on the Privacy Policy to view the Privacy Policy.



2.6.7.2 About device

- Click the about the device button and enter the page about the device.
- If Bluetooth is not connected, there is no data;

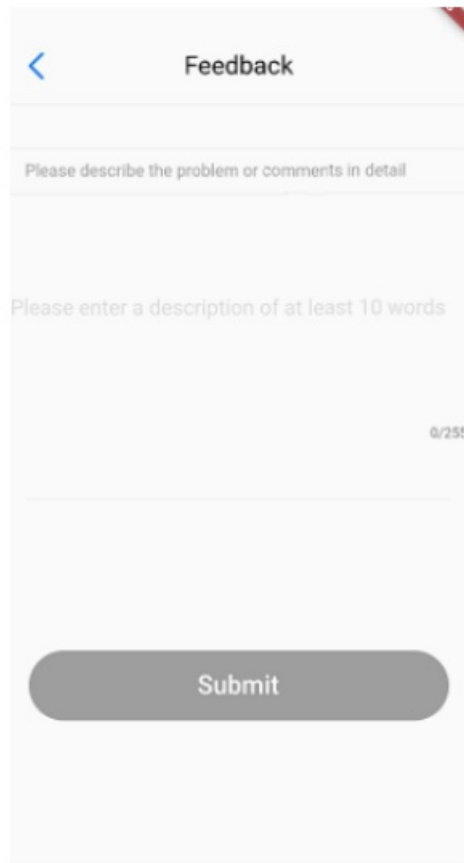


The screenshot shows a mobile application interface for 'About M1 Mini'. It features a header with a back arrow and the title 'About M1 Mini'. Below the header is a table listing various device specifications.

About M1 Mini	
Used hours	307
Firmware Version	1.01
Last sync	2020/08/03
Model	M1 Mini
Serial Number	M1A19A01005
Product ID	0FF0000MPV101
Product PIN	73196

2.6.8 Opinion Feedback

- Click the opinion feedback button to enter the opinion feedback page;
- Click the input box, input questions, and comments;
- If the input is less than 10 words, it is not able to be submitted, and click the submit button, a pop-up window will appear;
- If you enter more than 10 words, the submit button becomes blue;
- A pop-up window will appear after submission.



Feedback

Please describe the problem or comments in detail

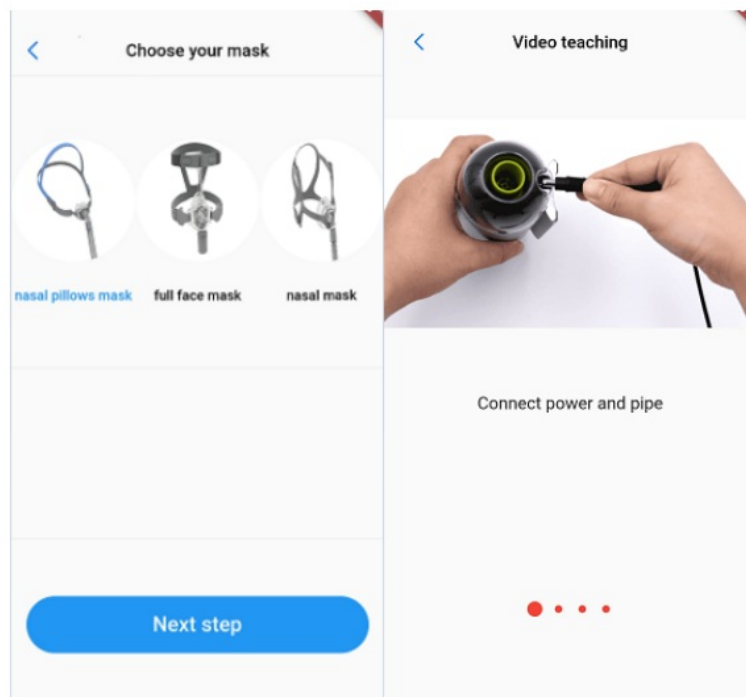
Please enter a description of at least 10 words

0/255

Submit

2.6.9 Video Teaching

1. Choose different face masks, and you can see the corresponding link, and videos about how to wear them;
2. View different steps by sliding.



Options of the Patient Menu and Corresponding Descriptions



3.1.1 Treatment setting

Option	Range	Description
Reflex	Off, 1/2/3	This feature enables the device to automatically reduce the treatment pressure when the patient exhales, so as to make the user more comfortable. The higher the numbering is, the more pressure the device reduces. "OW" means this feature is disabled.
Ramp Time	0 – Max Ramp	In order to increase comfort and help the patient fall asleep easily, the pressure can increase gradually, when
		the Ramp feature is enabled. The ramp time during which the initial pressure rises to the prescribed treatment pressure can be adjusted. The numbering increases or decreases by five minutes. The BMC Mini App displays a real-time countdown of the remaining ramp time in minutes
Auto-on	On/Off	If this function is turned on, the therapeutic device will automatically start delivering air under preset pressure after the patient puts on a breathing mask and takes several deep breaths. Click to select "on" or "off".
Auto-off	On/Off	If this function is turned on, the therapeutic device will automatically stop delivering air and shut down after the patient takes off the breathing mask. Click to select "on" or "off".
Tubing Type	22mm / 15mm	There are two tubing types available. Click to select "22mm" or "15mm".
Mask Type	Full Face; Nasal; Pillow; Other	There are three mask types available, namely Full Face (full-face mask), Nasal (nasal mask), and Pillow (nasal pillow mask). But the patient can choose other suitable masks as well. When selecting masks other than the above three types of BMC masks, the patient can identify the masks as other.
Moisture Exchanger Type	None/Normal /Pluses	It can be selected according to the moisture exchanger type of mask
Mask Test	/	Test the leakage of the mask, if it is not provided by our company, it will be defined as "other" mask

3.1.2 Consumables setting

Option	Range	Description
Remind cycle of Air Filter	Off/7 days/14 days/21 days/30 days/60 days/90 days	Set the air filter reminder cycle, it will remind the user once the cycle is up.
Remind cycle of Mask	Off/30 days-720 days	Set the mask to remind the cycle, it will remind the user once the cycle is up. The setting increment is 30 days
Remind cycle of Tubing	Off/30 days-720 days	Set the tubing to remind the cycle, it will remind the user once the cycle is up. The setting increment is 30 days
Remind cycle of Moisture Exchanger	Off/7 days/14 days/21 days/28 days	Set the moisture exchanger to remind the cycle, it will remind the user once the cycle is up. The setting increment is 7 days
Remind cycle of cleaning and maintenance	Off/180 days/360 days	Set the cleaning and maintenance reminder cycle, it will remind the user once the cycle is up.

Documents / Resources

 App Manual 	BMC BMC Mini App [pdf] User Manual BMC Mini App, BMC Mini App
--	--