



Blusafe Mirage Fingerprint Padlock Instruction Manual

[Home](#) » [Blusafe](#) » Blusafe Mirage Fingerprint Padlock Instruction Manual 

Blusafe Mirage Fingerprint Padlock Instruction Manual



Contents

- [1 Product Specification](#)
- [2 Battery Life](#)
- [3 Fingerprint Registration](#)
- [4 Unlocking the Padlock](#)
- [5 Deleting all fingerprints \(reset\)](#)
- [6 Documents / Resources](#)
 - [6.1 References](#)
- [7 Related Posts](#)

Product Specification

Average Recognition Time	0.5sec
FAR	1/100000
Spatial Resolution	508dpi
Battery Life	>200day
Locking Force	50-60KG (110-132113s)
Size	88 x 55 x 25mm (3-1/2" x 2-3/16" x 1")
Capacity of Fingerprint	20
FRR	1.59%
Battery Capacity	400mAh
Charging Current	5VDC, 1A
N.W.	203g(7oz)

Battery Life

Stated battery life is based on optimal operational conditions. As with all lithium batteries, performance can be noticeably affected by cold temperatures. When using outside, check the battery level regularly. If the LED turns purple on use, fully recharge the Padlock to avoid complete battery depletion.

Note: Operating temperatures of less than 0°C 32°F may lead to a more dramatic reduction in battery performance. During periods of very cold weather more frequent checking of the battery level is recommended.

Please read carefully before installation



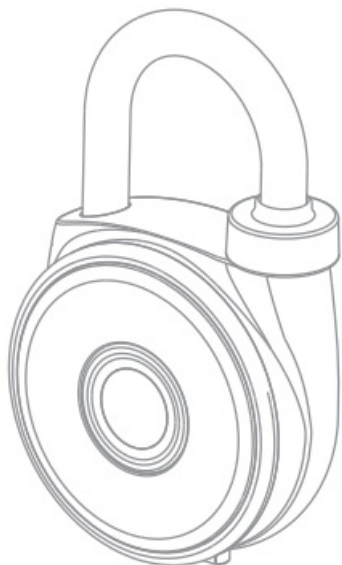
Important

Upon initial use of the padlock and after a reset the lock can be opened with each touch of the sensor.

The fingerprint sensor and finger that touches the sensor should always be kept clean, dry and free from grease.

The fingerprints will remain stored when the battery runs low.

It is recommended to use this product in an environment where it will not be exposed to heavy rain or salt water, or direct sunshine, which could damage the internal electronics.



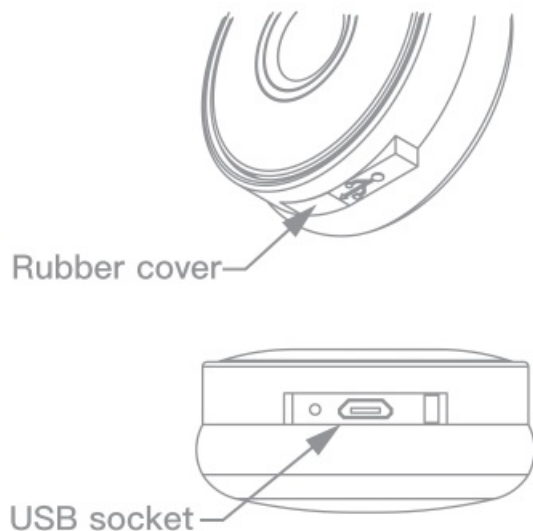
Charge the battery

It is recommended to fully charge the padlock at room temperature before first use, this can take up to 5 hours. To maximise the performance of the padlock's lithium battery we recommend fully recharging every 3 months.

Insert the USB cable into the socket in the padlock and charge using a USB mains device or compatible mains wall plug.

The circular LED ring will light up red to indicate the padlock is charging. When the red LED turns off charging is complete.

Close the rubber charging cover



Fingerprint Registration

1. On first use

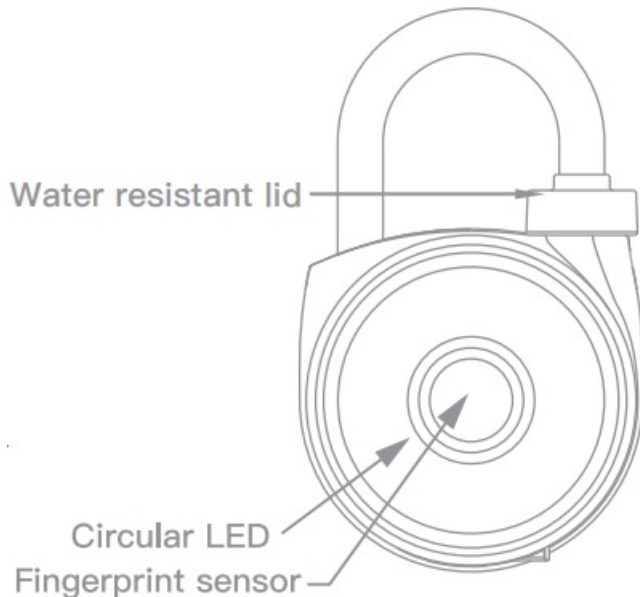
Press the fingerprint sensor to check that the battery has charged fully. The fingerprint sensor is located in the centre of the padlock. The circular LED ring around the sensor will light up.

If the LED BLUE lights up – Normal power. Lock is ready.

If the LED PURPLE lights up & BEEP sounds- Low power. Lock can still operate. Charge required.

If the LED PURPLE lights up and stays on – Very low power.

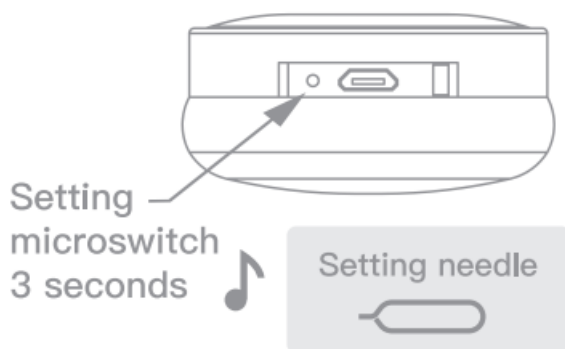
Note that if the padlock does not operate normally at any time please charge the battery



2. How to set up ADMIN Fingerprints

Note that the first 3 registered fingerprints are all ADMIN fingerprints. ADMIN fingerprints can be used to unlock the padlock and to authorise new user fingerprints.

A. Set up the first ADMIN fingerprint. Using the setting needle provided, gently press the setting microswitch (located under the rubber charging cover) for 3 seconds until 1 beep sounds and the LED BLUE lights up.



WARNING : Please do NOT push the needle too hard as this can cause damage to the setting microswitch. A click should be felt as the needle makes contact with the microswitch, when operated correctly.

B. Press the fingerprint sensor. 1 triple beep will sound and the LED GREEN flickers. The LED BLUE lights up. Fingerprint is authorised & ADMIN registration is now ready.



Note: If the LED RED flickers with no beep sound the sensor has not detected the fingerprint. Try again.

C. Press the fingerprint sensor a further 4 times. 1 beep will sound and the LED GREEN flickers each time the sensor is pressed. On the final press a triple beep sounds. ADMIN registration is complete.



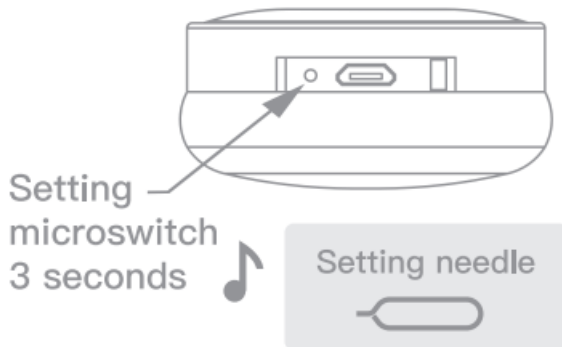
Note: For the 2nd ADMIN fingerprint to be registered step 2b must be done using the 1st ADMIN fingerprint. For the 3rd ADMIN fingerprint to be registered step 2b can be done using either the 1st or 2nd ADMIN fingerprint.

It is recommended to register ALL 3 ADMIN fingerprints on first use.

3. How to set up USER Fingerprints

Note that an ADMIN fingerprint will be required to authorise the register of new fingerprints on the padlock.

A. Using the setting needle provided, gently press the setting microswitch (located under the rubber charging cover) for 3 seconds until 1 beep sounds and the LED BLUE lights up.



WARNING: Please do NOT push the needle too hard as this can cause damage to the setting microswitch. A click should be felt as the needle makes contact with the microswitch, when operated correctly.

B. Press the fingerprint sensor with a registered ADMIN fingerprint for authorisation. The LED BLUE flickers. Registration is now ready.



C. Press the sensor with a USER fingerprint. If the LED GREEN flickers and 1 beep sounds registration is valid.



Note: If the LED RED flickers with no beep sound the sensor has not detected the fingerprint. Try again.



Unlocking the Padlock

Press the fingerprint sensor with a registered fingerprint.

If a triple beep sounds and the LED GREEN flickers, validation is ok and the padlock will open.

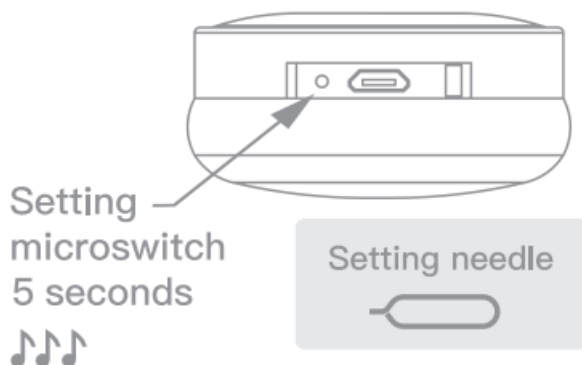
If a single beep sounds and the LED RED flickers, validation has failed. Press the fingerprint sensor again with a registered fingerprint.



Deleting all fingerprints (reset)

A. Using the setting needle provided, gently press the setting microswitch (located under the rubber charging cover) for 5 seconds until 3 beeps sound and the LED RED lights up 3 times.

WARNING : Please do NOT push the needle too hard as this can cause damage to the setting microswitch. A click should be felt as the needle makes contact with the microswitch, when operated correctly.



B. Press the fingerprint sensor with a registered ADMIN fingerprint.

A triple beep sounds and the LED green flickers. All fingerprint data has now been deleted and the padlock has been reset.



Low battery indication

If the LED PURPLE flickers and 1 beep sounds the padlock requires charging. Use the USB cable provided to do this.

Notes

Recharge the padlock if it does not operate normally at any stage of operation. If the problem persists, reset the

padlock.

When registering fingerprints it is recommended that you press your finger on the sensor in different positions so that the fingerprint data is fully collected.

When the padlock has been reset there is no data saved, any fingerprint can be used to unlock.



SCAN ME

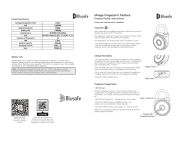
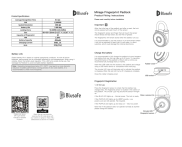
Watch the set-up tutorial by scanning the QR code above with your camera or going to: <https://blu-safesolutions.co.uk/how-to-videos/>



Please scan above QR to get newest manuals on Blusafe Products



Documents / Resources

	Blusafe Mirage Fingerprint Padlock [pdf] Instruction Manual Mirage Fingerprint Padlock, Mirage, Fingerprint Padlock, Padlock
	Blusafe Mirage Fingerprint Padlock [pdf] Instruction Manual Mirage Fingerprint Padlock, Mirage, Fingerprint Padlock, Padlock

References

- [safesolutions.co.uk domain name is for sale. Inquire now.](#)