



blurams S15F Internal Wi-Fi Camera Instruction Manual

[Home](#) » [blurams](#) » blurams S15F Internal Wi-Fi Camera Instruction Manual 

Contents

- [1 blurams S15F Internal Wi-Fi Camera](#)
- [2 Product Information](#)
- [3 Product Usage Instructions](#)
- [4 Packing list](#)
- [5 FAQs](#)
- [6 FCC Statement](#)
- [7 FCC Radiation Exposure Statement](#)
- [8 Documents / Resources](#)
 - [8.1 References](#)
- [9 Related Posts](#)

blurams

blurams S15F Internal Wi-Fi Camera



Product Information

Specifications

- Photosensor
- Microphone
- Indicator light
- Lens
- TF card slot
- Louver
- USB interface
- Speaker
- Reset button

Product Usage Instructions

Step 1: Plug in your camera

1. Plug the power adapter into a power outlet.
2. Connect the USB cable to the camera.
3. Ensure you are using the items included in the original package for optimal performance.

Step 2: Download blurams App

Download the App by searching “blurams” in the App Store or Google Play. Alternatively, you can open a QR scanner App and scan the blurams App QR code below to install the App.

Step 3: Add your camera into App

1. Enter into the blurams App.
2. Sign up for a free blurams account and log in.
3. Go to the home page and click the + icon on the top right corner.
4. Select your camera.
5. Follow the instructions on the App interface to add your camera.

FAQs

If you encounter any troubles in product information, product installation, and use

Please refer to the “Mine > Help And Feedback” section in the blurams app or email us at support@blurams.com.

Give us your feedback

blurams strives for a high-quality product and user experience. We're eager to hear your feedback or suggestions. Send your feedback through the App or email us at support@blurams.com.

FCC Statement

Congratulations! Your camera is ready to use. Thank you for choosing blurams.

Additional Information

For more information, you can visit

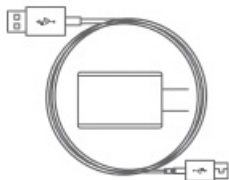
- blurams Facebook: <https://www.facebook.com/blurams>
- blurams Instagram: <https://www.instagram.com/blurams>
- Blurams Support Email: support@blurams.com
- Blurams Website: <https://www.blurams.com>

Snowman S15F Multilingual Manual & Guide

Packing list



1 × Camera



1 × USB cable &
Power adapter



1 × Screw
accessory pack

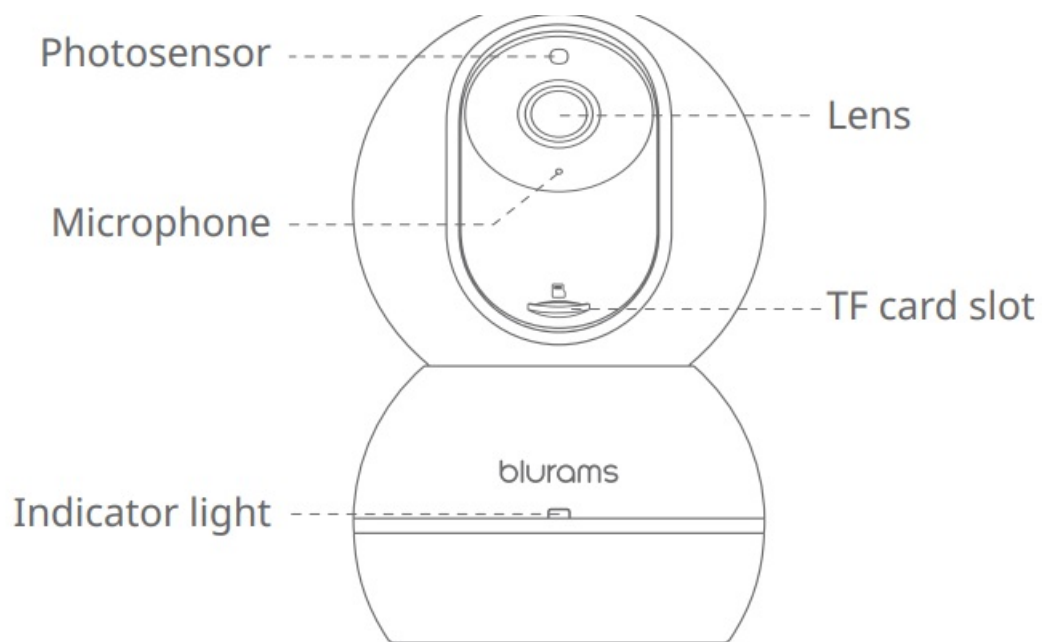


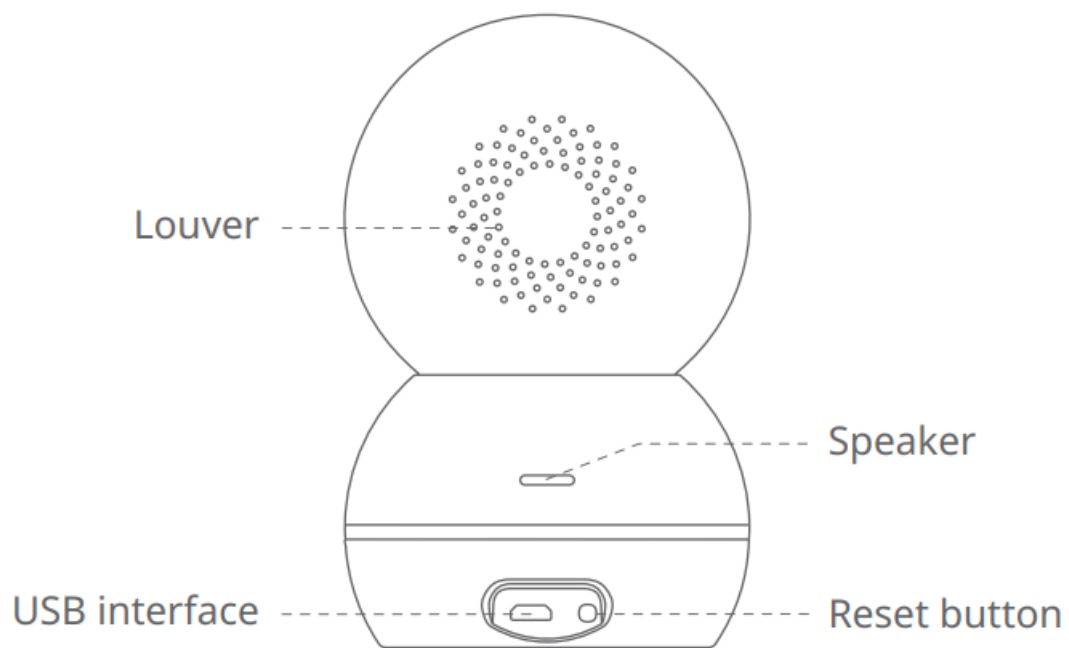
1 × Mounting base



1 × Manual

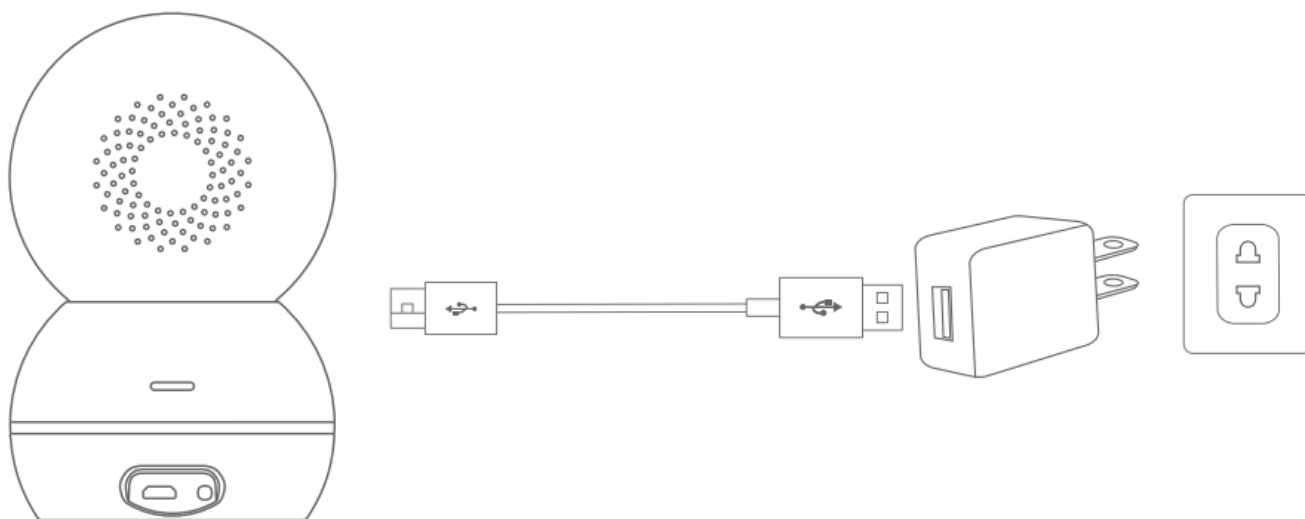
Get to know your camera





Plug in your camera

Plug the power adapter into a power outlet with USB cable connected. Please use the items included in the original package for optimal performance.



Download blurams App

Download the App by searching “blurams” in the App Store or Google Play. Alternatively, you can open a QR scanner App and scan the blurams App QR code below to install the App.

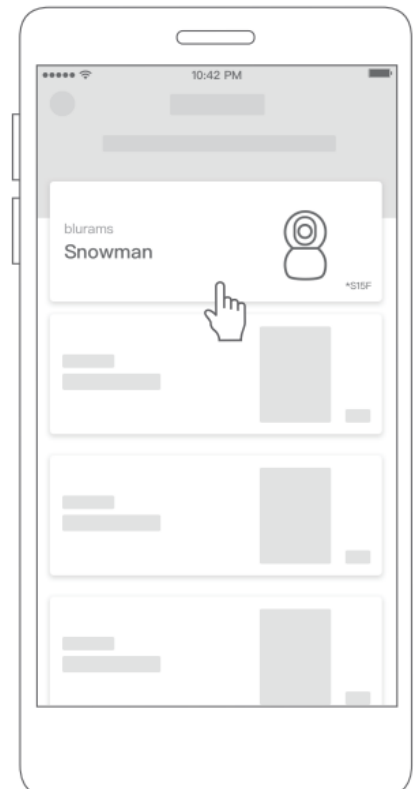
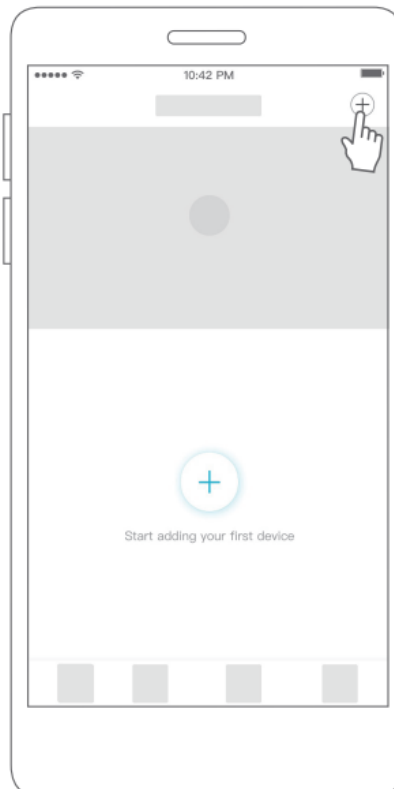
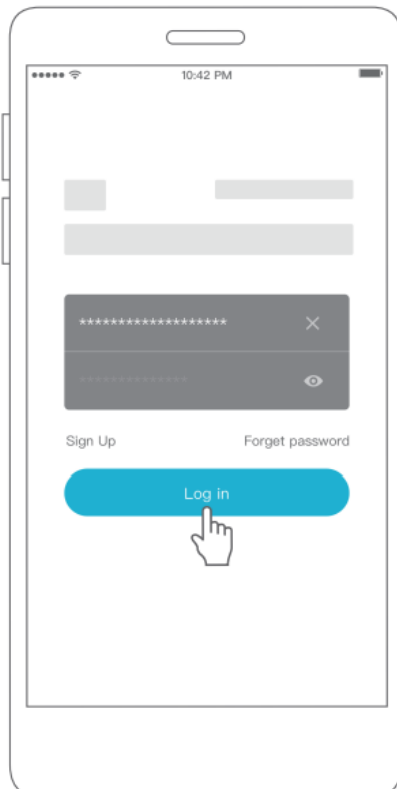


blurams App QR code



Add your camera into App

Enter into the blurams App, sign up for a free blurams account and log in. Go to the home page and Click the “+” icon on the top right corner, select your camera. Please follow the instruction on the App interface to add your camera.



FAQs

If you encounter any troubles in product information, product installation and use, please refer to the “Mine > Help And Feedback” in blurams app or email at support@blurams.com.

Give us your feedback blurams strive for a high-quality product and user experience, we’re eager to hear your feedback or suggestions. Send your feedback through the App or email at support@blurams.com.



FCC Statement

This equipment has been tested and found to comply with the limits for a Class B digital device, pursuant to part 15 of the FCC rules.

These limits are designed to provide reasonable protection against harmful interference in a residential installation. This equipment generates, uses and can radiate radio frequency energy and, if not installed and used in accordance with the instructions, may cause harmful interference to radio communications. However, there is no guarantee that interference will not occur in a particular installation.

If this equipment does cause harmful interference to radio or television reception, which can be determined by turning the equipment off and on, the user is encouraged to try to correct the interference by one or more of the following measures

- Reorient or relocate the receiving antenna.
- Increase the separation between the equipment and receiver.
- Connect the equipment into an outlet on a circuit different from that to which the receiver is connected.
- Consult the dealer or an experienced radio/TV technician for help.

To assure continued compliance, any changes or modifications not expressly approved by the party.

Responsible for compliance could void the user's authority to operate this equipment. (Example- use only shielded interface cables when connecting to computer or peripheral devices).

This equipment complies with Part 15 of the FCC Rules.

Operation is subject to the following two conditions

1. This device may not cause harmful interference, and
2. This device must accept any interference received, including interference that may cause undesired operation.

FCC Radiation Exposure Statement

The equipment complies with FCC Radiation exposure limits set forth for uncontrolled environment. This equipment should be installed and operated with minimum distance 20cm between the radiator and your body.

- **FCC ID:** 2ASAQ-S15F

Congratulations

Your camera is ready to use. Thank you for choosing blurams.



blurams Facebook



blurams Instagram


- support@blurams.com
- www.blurams.com

Snowman S15F



Multilingual Manual & Guide

Documents / Resources

 <p>Packing list</p>	<p>blurams S15F Internal Wi-Fi Camera [pdf] Instruction Manual S15F, S15F Internal Wi-Fi Camera, Internal Wi-Fi Camera, Wi-Fi Camera, Camera</p>
---	--

References

- [🌐 **Blurams Official Smart Home Security Camera | Shop Indoor&Outdoor Cam**](#)
- [User Manual](#)

[Manuals+](#), [Privacy Policy](#)