



BLUONICS RO-50G 5 Stage Undersink Reverse Osmosis Drinking Water Filter System Instruction Manual

[Home](#) » [BLUONICS](#) » BLUONICS RO-50G 5 Stage Undersink Reverse Osmosis Drinking Water Filter System Instruction Manual 📖

BLUONICS RO-50G 5 Stage Undersink Reverse Osmosis Drinking Water Filter System Instruction Manual



Very Important After your system is installed, the pre-filters need to be flushed. See owner's manual under **OPERATION AND MAINTENANCE**

To flush your filters, turn the blue valve (in the picture below) to **ON POSITION**.

After the filters have been flushed, make sure the blue valve is in **OFF POSITION** for regular operation.



Contents

- 1 INTRODUCTION
- 2 PACKAGE CONTENTS
- 3 TECHNICAL SPECIFICATIONS
- 4 BEFORE YOU START
- 5 CAUTIONS
- 6 HOW YOUR SYSTEMS WORKS
- 7 SYSTEM COMPONENTS
- 8 INSTALLATION
 - 8.1 Tools and Parts Required
 - 8.2 Unit Placement
- 9 TROUBLESHOOTING
- 10 Documents / Resources
- 11 Related Posts

INTRODUCTION

We would like to thank you for choosing the Bluonics Reverse Osmosis Unit. This is our standard 5-stage filtration unit with optional 6th stage filtration add-on. Our unit has been manufactured to strict quality standards to ensure you receive the best product possible. This unit is your first step to cleaner, healthier and better tasting water. The stages and their functions are outlined below.

First Stage: Spun PP Filter— removes larger particles suspended in water.

Second Stage: Granular Carbon Filter — removes organics , chlorine, odor, and turbidity.

Third Stage: Block Carbon Filter — further removes any organics. chlorine, odor and turbidity.

Fourth Stage: RO Membrane — removes bacteria heavy metals, dissolved matter, and salinity.

Fifth Stage: Inline Carbon Filter (post filter) — adjusts the taste of treated water.

Optional Sixth Stage add-ons include:

Mineralized Ball Filter — reincorporates healthy minerals back in to treated water.

Ultraviolet Sterilizer — kills any bacteria, virus, or organisms present in water.

PACKAGE CONTENTS

- **Reverse Osmosis Unit** — 1 pcs
- **Housing Wrench** — 2 pcs
- **Food Grade Tubing** —4 pc (Red, White, Yellow and Blue)
- **Faucet** —1 pcs
- **Accessories** — Tube Plug, Screws. Drain Clamp, Tee Fitting. Ball Valve. Feed Water Valve
- **RO Membrane** —1 pcs
- **Manual** —1 pcs

TECHNICAL SPECIFICATIONS

- **RO Element Capacity:** 50/75/80/100/125 GPD
- **Tank Capacity** : 3.2G Steel or 3.0G Plastic
- **Inlet TDS:** 250ppm
- **Chlorine Level:** 0.2ppm
- **Average RO Rejection Rate:** 98%
- **Inlet Water Pressure (min/Max):** 40-80 psi
- **Inlet Water Temperature (min/Max):** 5°C – 45°C Flush Type Manual

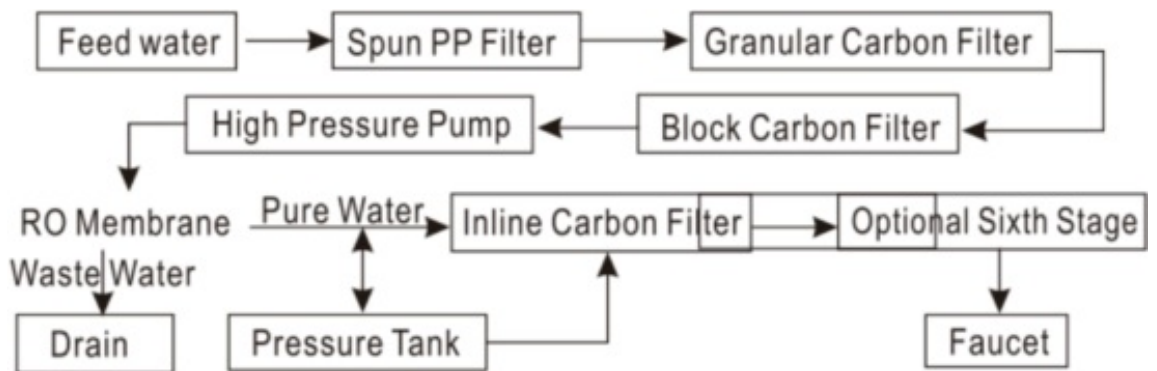
BEFORE YOU START

- Read through all instructions before beginning installation and using this system. Follow all steps exactly or risk damaging system/incorrect operation.
- This system contains filters that need to be replaced at certain intervals. Replacement intervals will vary according to use. please contact your local dealer for details.
- Please install system on potable water only . On non-potable water sources. system will not function properly and additional pre-treatment may be needed.
- Ensure source water pressure is between 3/ , 7/ psi. If source water pressure exceeds maximum pressure a pressure reduction valve may be needed. consult your local dealer.
- Ensure source water temperature is between 3/ °E 00! °E System will not function properly if these temperatures are exceeded. **DO NOT INSTALL ON HOT WATER SOURCE.**
- Do not use system on noticeably contaminated water such raw sewage or well water.

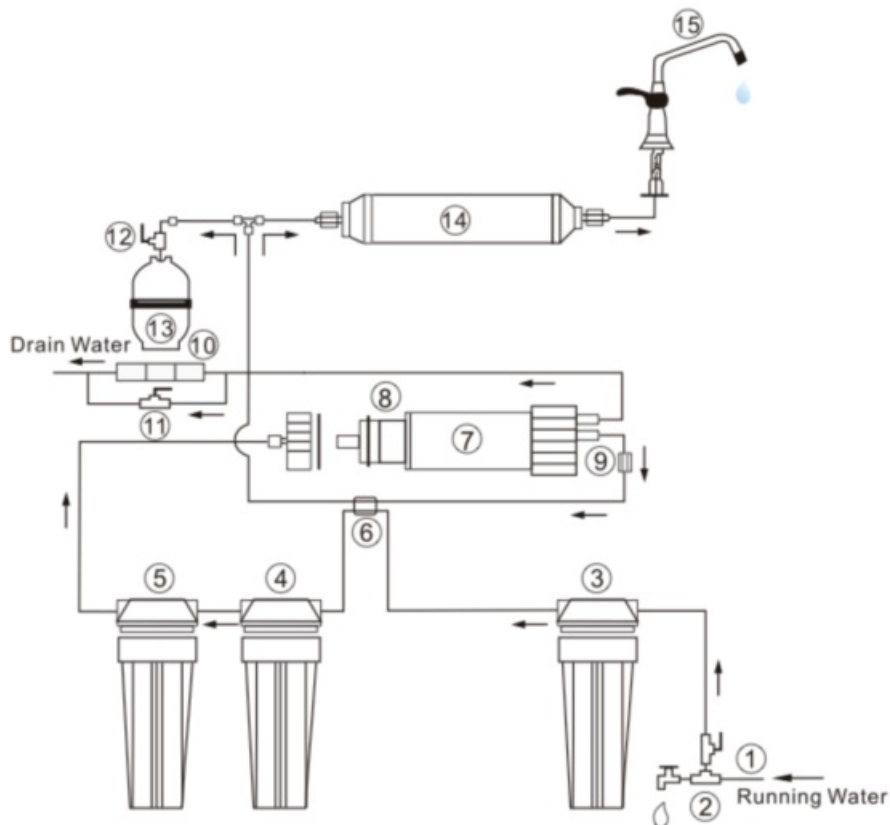
CAUTIONS

- Do not disassemble. open, or modify this unit. Tampering with the unit may cause failure or damage and will void warranty.
- Do not cover the unit, as this will prevent proper heat dissipation and can cause damage or fire.
- Do not place objects on top of the unit as this may cause damage to the unit and may cause leaking.
- Follow all recommended operating pressures and temperature, failure to do so will cause damage to the unit and void warranty.

HOW YOUR SYSTEMS WORKS



SYSTEM COMPONENTS



1. Feed Water Valve
2. Tee Fitting
3. PP Spun Fiber
4. Granular Carbon Filter
5. Block Carbon Filter
6. Auto Shut Off Valve (option)
7. Membrane Housing
8. RO Membrane
9. Check Valve
10. Drain Restrictor
11. By-pass flush Valve (option)
12. Ball Valve
13. Pressure Tank
14. Inline Carbon Filter
15. Faucet

INSTALLATION

Tools and Parts Required

- Knife



- Electric Drill



- Seal Tape



- Hammer



- Monkey Wrench



- Scissors



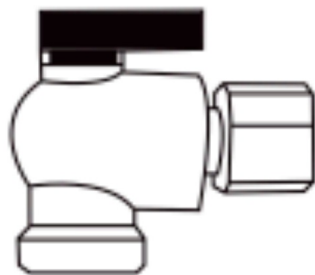
- Faucet



- Tank



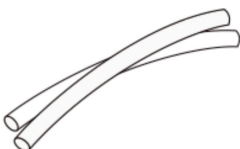
- Housing Wrench



- Tank Ball Valve



- Water Pipe



- Clip



- Faucet Bracket

- RO Membrane

- Feed Water Valve

- Tee Fitting

- Manual

- Drain Clamp



Faucet Bracket



RO Membrane



Manual



Feed Water Valve

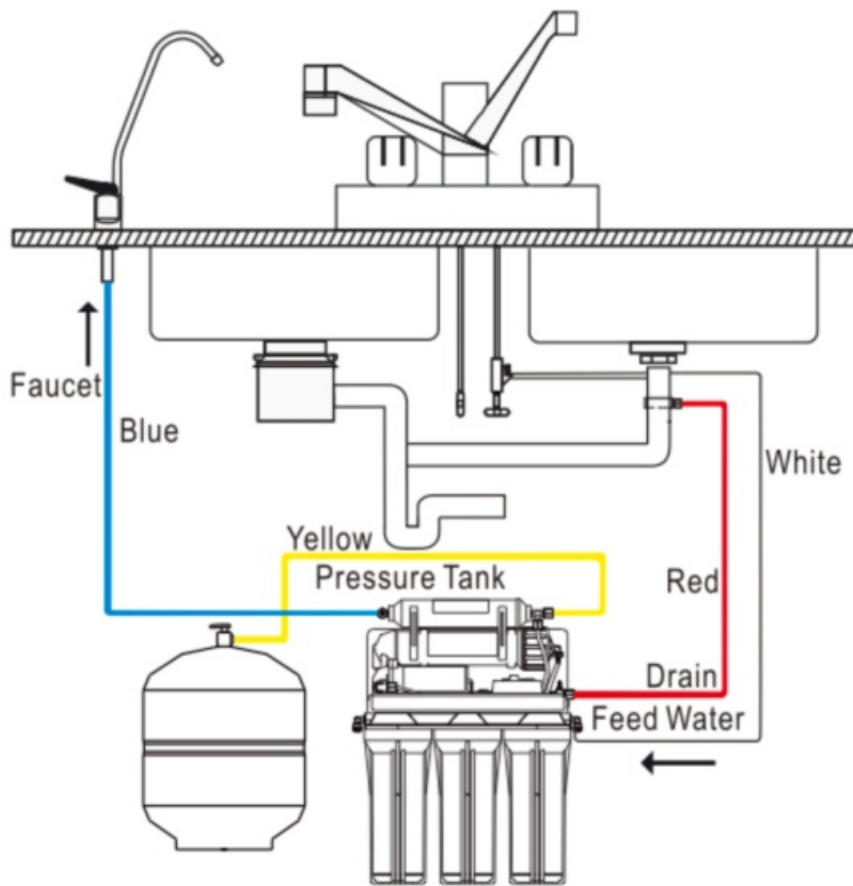


Tee Fitting



Drain Clamp

Unit Placement



- The unit can be placed flat or upright and on top, inside, or under the cabinet. Feed Water connection should be as close as possible to unit. However, if due to space or other limitations, this unit can be placed where it is convenient.
- When choosing a location for the unit, remember to have easy access to cold water line, drain pipe, power outlet, and enough room to change filters.



NOTE: All components and tubing should be located in an area not exposed to freezing temperatures or direct sunlight.

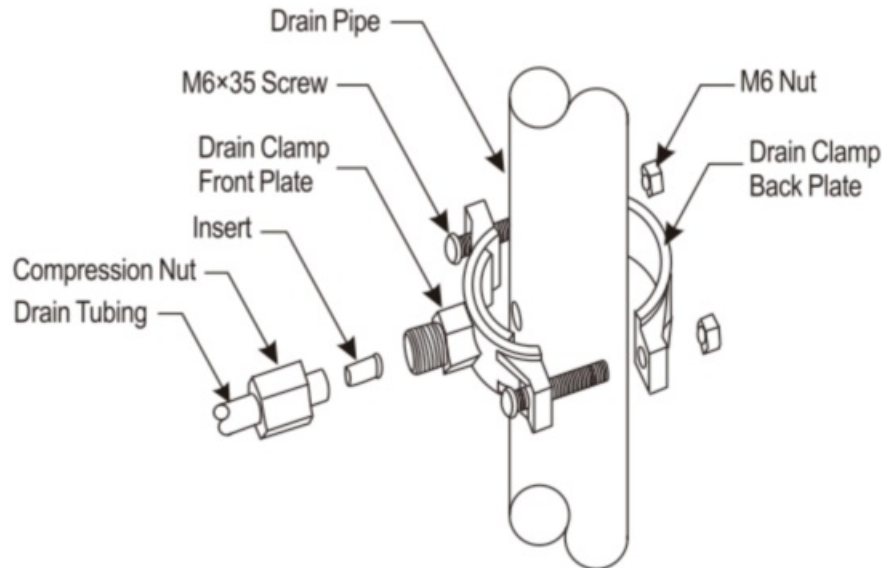
Drain Clamp Installation

- Position drain clamp on drain pipe above the drain trap and tighten securely.
- Using the drain clamp as a guide, drill a 6mm hole, enough for the 1/4" tubing to pass, through one side of the drain pipe. DO NOT drill through both sides.
- Connect **Red Waste Water Tubing** from unit to Drain Clamp.

NOTE: When cutting the tubing make clean, square. cuts. failing to do so result in poor connection and possible leaks.

CAUTION: The lowest point of the line should be the point of connection to the Drain Clamp. There should be no sag in the line as this may cause excessive noise as the reject water is flowing to drain.

DRAIN CLAMP ASSEMBLY



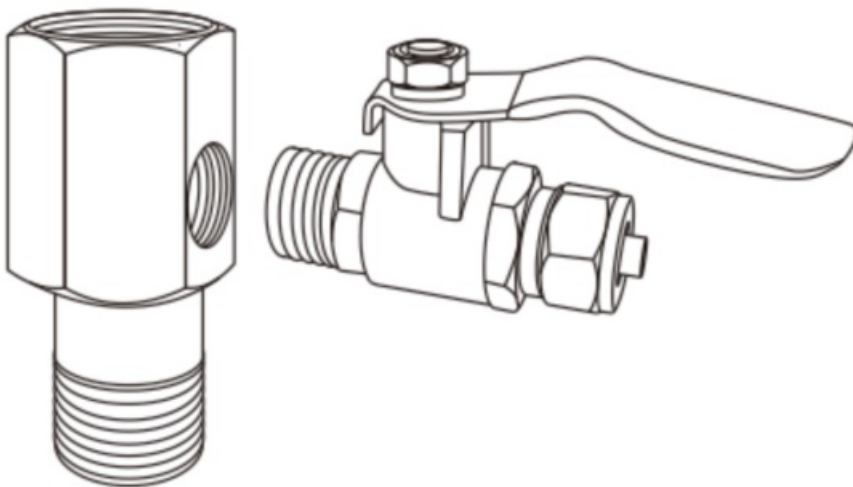
Feed Water Valve and Tee Fitting

- Install Tee Fitting and Feed Water Valve as per diagram.
- Wrap threads of Feed Water Valve and Tee Fitting with Teflon tape.
- Connect White Feed Water Tubing from unit to Feed Water Valve.

Install the Feed water valve

Install the Feed water valve Tee fitting, and then connect to source water.

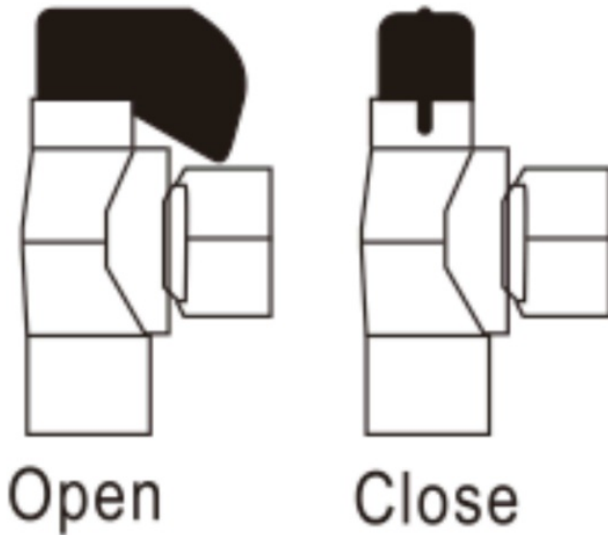
Caution: The water supply to your unit **MUST** be from **COLD WATER LINE**.



NOTE: Use only a **cold potable water** supply as Feed Water, hot water will damage your unit. Softened Feed Water will extend the life of the RO Membrane.

Pressure Tank

- Keep Pressure Tank within 10 feet of faucet.
- If longer length of tubing is needed, use 3/8" tubing only to prevent pressure drop.
- Tank can weigh up to 30lbs when full, find firm and level flooring.
- Install Ball Valve by screwing Valve on to Tank and apply Teflon tape to prevent leaking.



Tank Ball Valve

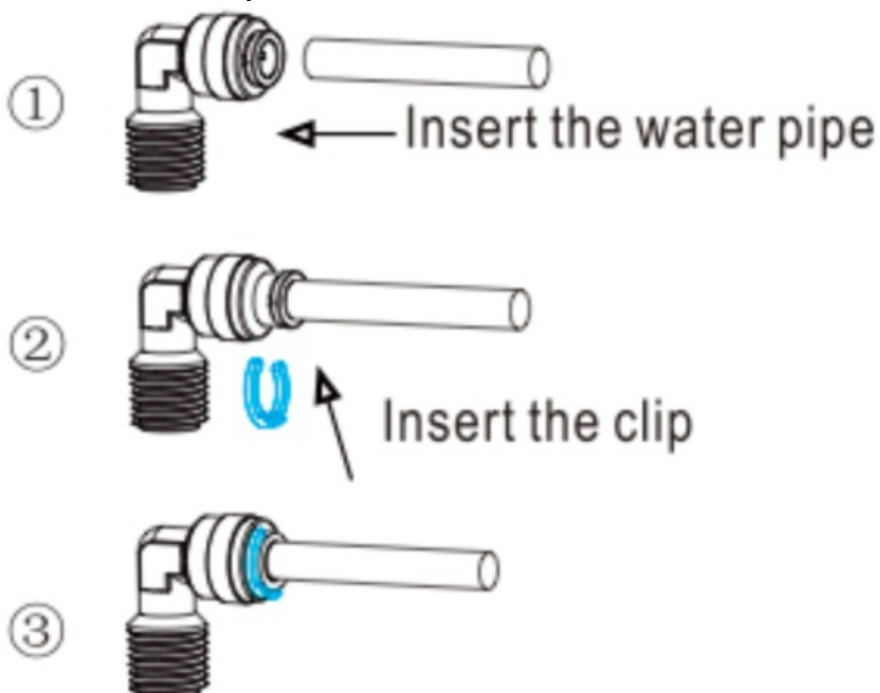
- Tank ball valve Connect Red tubing from post filter to Pressure Tank.

Tubing Connection

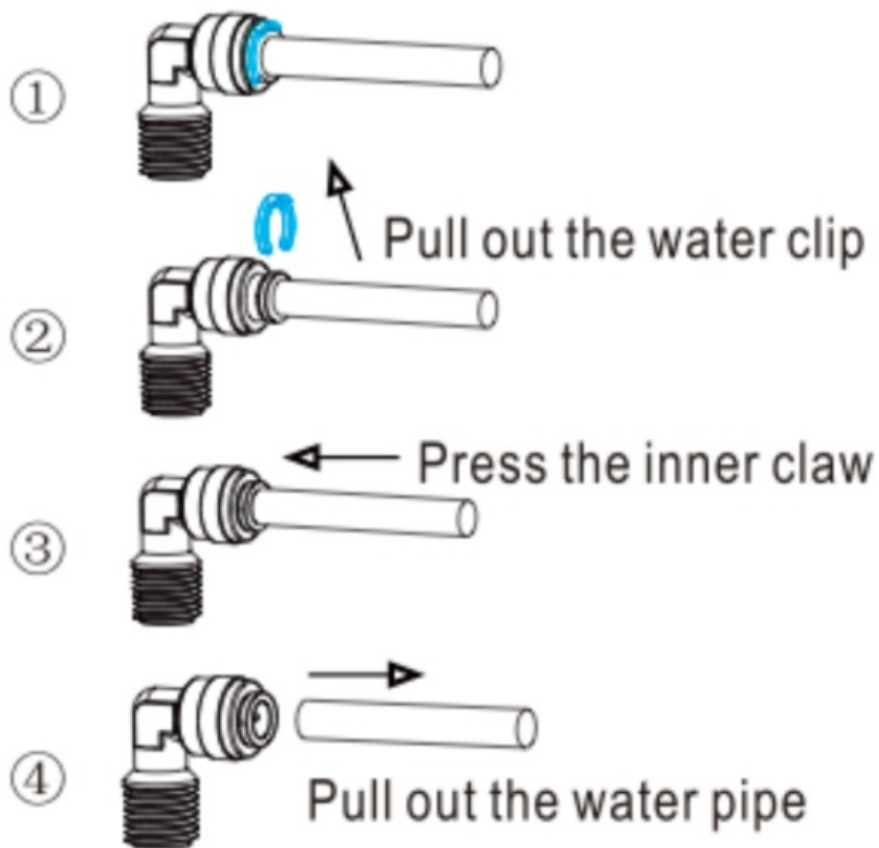
Refer to the following diagram for how to properly install the Quick fittings and JACO fittings.

Quick Fitting

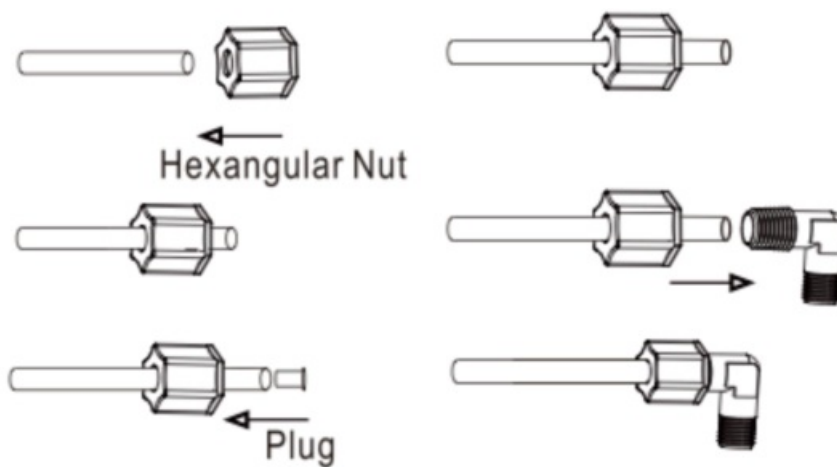
Install the Water Pipe



Pull out the Water Pipe



JACO Fitting



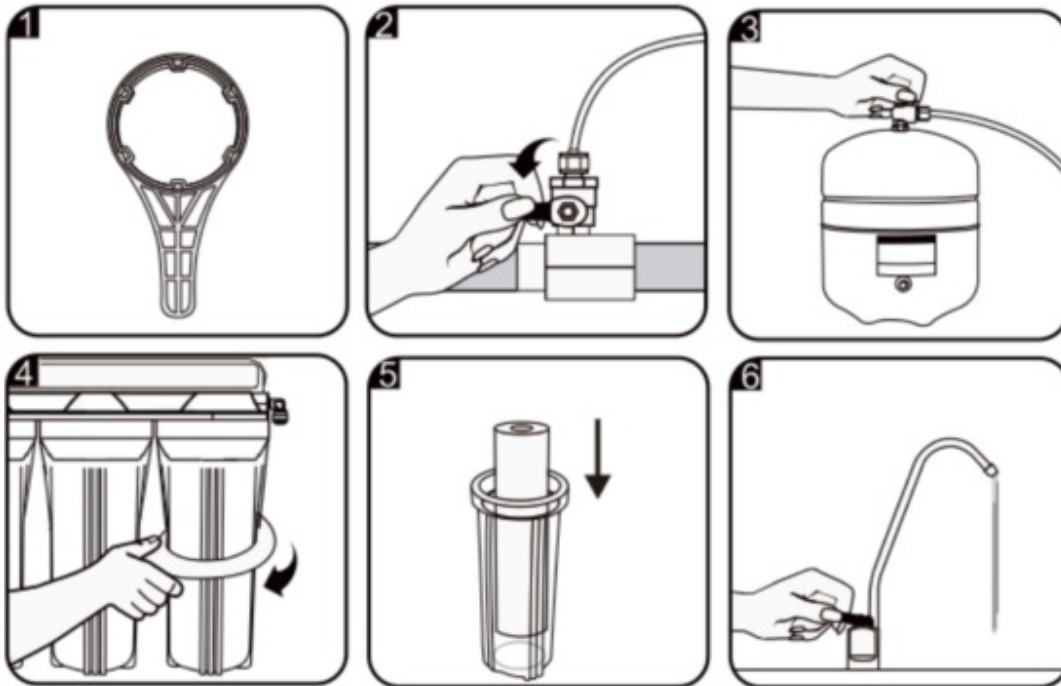
Faucet Installation

- Select a convenient location near your sink to place the faucet.
- Drill a hole 12mm in diameter in counter top.
- Place washers, plates, seals and nuts in order as per diagram and tighten on to counter.
- Attach **Blue Pure Water tubing** to the bottom of faucet and connect tubing to unit.

CAUTION: Check that tubing is connected correctly according to Connection Diagram at beginning of section.

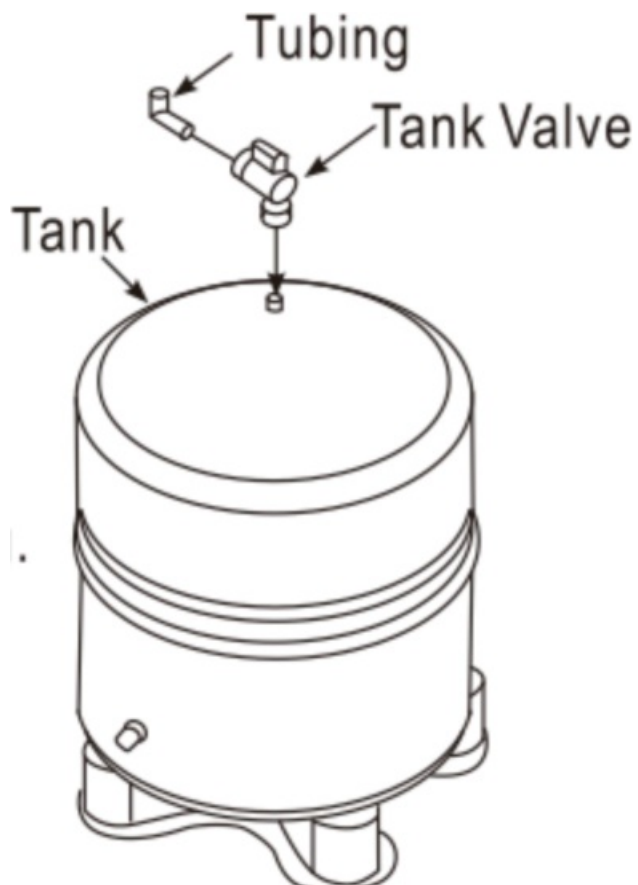
Install Pre-Filters

- Remove Pre-Filters from packaging.
- Place filters in appropriate housings according to labels and install filter housing from right to left in the following order: PP, GAC, CTO.
- Tightening housings with wrench provided.



Note: When installing housings make sure housing is level and even to avoid leaking.

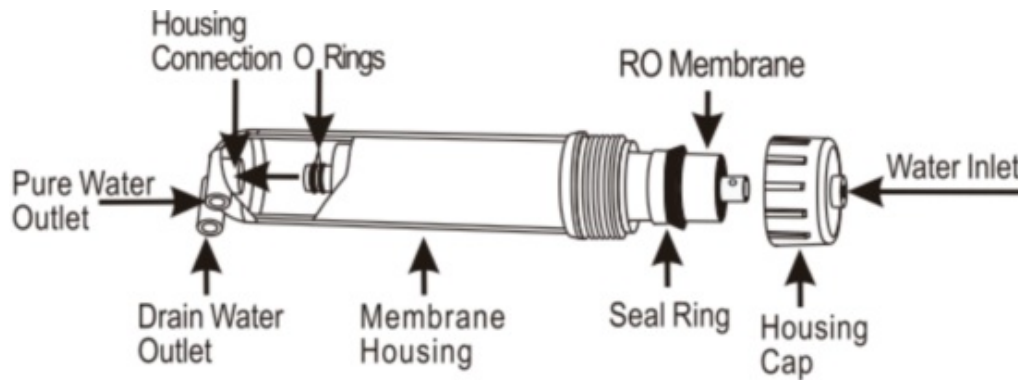
Install Tank



- Hand tighten plastic.
- Shut-off valve to tank.
- Then connect yellow color tubing.

Install RO Membrane Element

NOTE: Before proceeding with membrane element installation, please flush pre-filters thoroughly. (Instructions on how to perform filter flush provided in next section)



- Remove RO housing cap using wrench.
- Remove RO element from packaging.
- Insert RO element into housing with the small double O rings facing inward. Install membrane housing cap and tighten with wrench provided.

OPERATION AND MAINTENANC

Pre-filter Flushing (initial setup, before installing RO Element)

Prepare system for operation by flushing pre-filters:

- After your system is installed, the filters need to be flushed.
- To flush your filters. turn the blue valve in front to ON POSITION.
- Continue flushing until output water is visibly clean.
- After the filters have been flushed. make sure the blue valve is in OFF POSOTION for regular operation.

Note: membrane may be severely damaged if system is run without flushing pre-filters. Discard all water from flush, it is not suitable for use or consumption.

- After flushing pre-filters connect and open all valves.
 - Wait approximately 2 minutes before opening faucet
 - Allow system to flush for first 10-15 minutes with faucet open.
- Do not use water from RO unit at this time.

Flushing the Pressure Tank

- After flushing the Pre-Filters, allow the unit to operate and fill the Pressure Tank.

- Tank will take approximately 3.5 hours to fill. Once tank is full, discharge Pressure Tank by leaving faucet open.
- Once Tank is completely empty, close faucet and allow tank to fill again.

After the Pressure Tank has been flushed, the unit is ready for use.

After flushing the system is ready to use.

Regular Operation

Once system has been set up, it will operate and begin treating water automatically. Once the faucet is closed, the unit will switch off automatically when the tank is full.

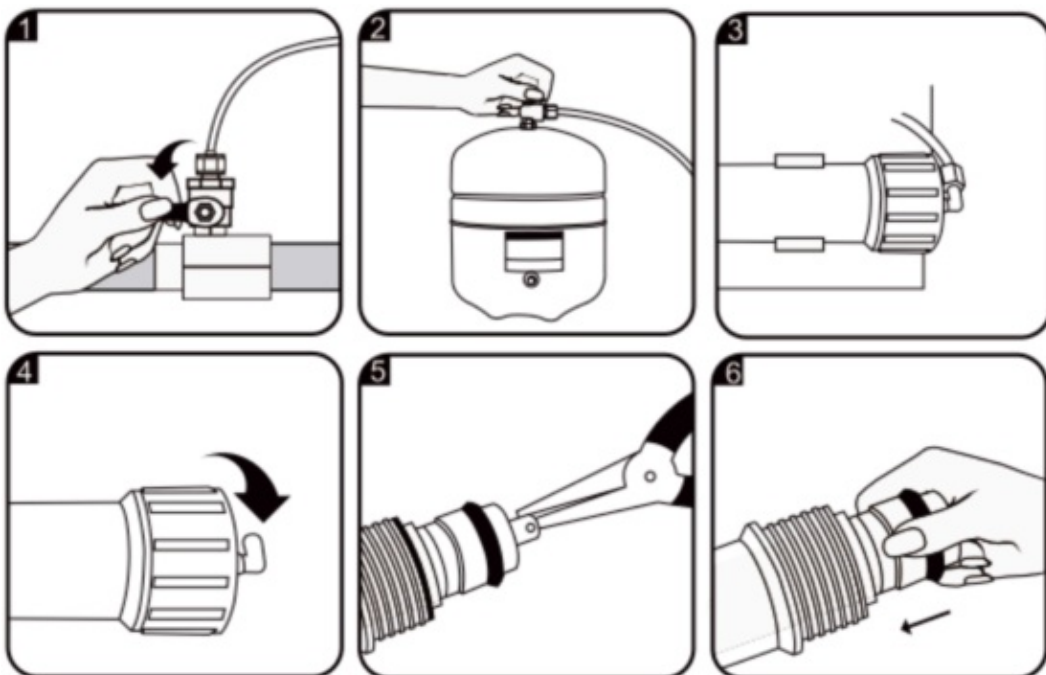
Filter Replacement

- Close Feed Water Valve.
- Close Tank Ball Valve on Pressure Tank.
- Open Faucet and drain any remaining water from system.
- Replace filters. reconnect, and open valves.
- Perform pre-filter flush after filters have been changed

Note: Diagrams on how to connect using quick connect fittings can be found in the installation section.

Membrane Replacement

- Close Feed Water Valve.
- Close Tank Ball Valve on Pressure Tank.
- Open Faucet and drain any remaining water from system.
- Open membrane housing and remove used membrane.
- Follow the same procedure as RO membrane installation to replace RO membrane.




TROUBLESHOOTING

| PROBLEM | CAUSE | SOLUTION |
|---|-------------------------------------|------------------------------|
| No product water | Water supply is off | Turn on feed water |
| Not enough product water | Water supply is blocker | Clear restriction |
| | Feed water valve is plugged | Open valve or unplug |
| | No drain flow | Clear or replace check valve |
| Pump not running | Low feed water pressure | Check source water supply |
| | No power supply or loose connection | Turn on power supply |
| | Transformer burnt out | Replace filter cartridges |
| Pump is running but system is not producing water | Pre-filters plugged | Replace filter cartridges |
| | Inlet solenoid valve not working | Repair or replace valve |
| System does not shut off | Auto shut off switch not working | Repair or replace switch |
| Abnormal pump noise | Pre-filters plugged | Replace filter cartridges |
| | Low feed water pressure | Adjust feed water pressure |
| No drain water | Plugged drain flow restrictor | Replace |
| Tubing leaks | Tubing connection incorrect | Check/reinstall tubing |
| | Defective or damaged tubing | Replace section of tubing |



Manufactured exclusively for wholesale market LLC
636-356-991

Documents / Resources

| | |
|---|--|
|  | <p>BLUONICS RO-50G 5 Stage Undersink Reverse Osmosis Drinking Water Filter System [pdf] Instruction Manual RO-50G, 5 Stage Undersink Reverse Osmosis Drinking Water Filter System</p> |
|---|--|