



## BluMill Ice Cube Machine User Manual

[Home](#) » [bluMill](#) » BluMill Ice Cube Machine User Manual 

### Contents

- 1 [BluMill Ice Cube Machine User Manual](#)
  - 1.1 [KNOW YOUR ICE MAKER](#)
  - 1.2 [CONTROL PANEL](#)
  - 1.3 [BEFORE FIRST USE](#)
  - 1.4 [USING YOUR ICE MAKER](#)
  - 1.5 [CLEANING AND MAINTENANCE](#)
  - 1.6 [TROUBLESHOOTING](#)
  - 1.7 [TECHNICAL PARAMETERS](#)
  - 1.8 [ENVIRONMENT FRIENDLY DISPOSAL](#)
- 2 [Documents / Resources](#)
- 3 [Related Posts](#)

**BluMill Ice Cube Machine User Manual**



**Read this manual thoroughly before using and save it for future reference**

### **IMPORTANT SAFETY INSTRUCTIONS**

**To reduce the risk of fire, explosion, electric shock, or injury when using your ice maker, follow these important safety instructions:**

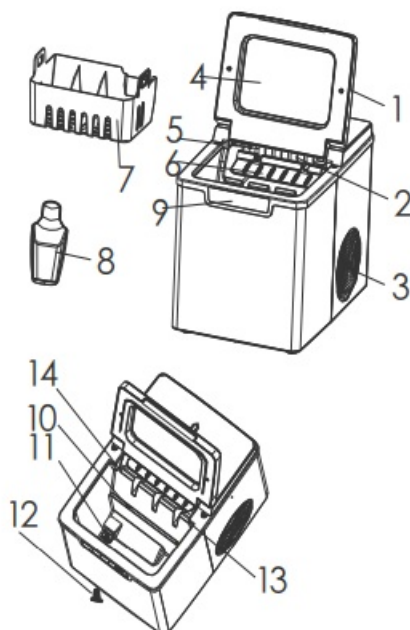
- Before using check that the voltage power corresponds to the one shown on the appliance nameplate.
- Do not remove any safety, warning, or product information labels from your ice maker.
- Plug the ice maker into an exclusive grounded power outlet. No other appliance should be plugged into the same outlet. Be sure that the plug is fully inserted into the receptacle.
- This appliance must be grounded. It is equipped with a power cord having a grounding plug. The plug must be plugged into an outlet that is properly installed and grounded.
- Avoid the use of an extension cord because it may overheat and cause a risk of fire. However, if it is necessary to use an extension cord: 1) Use only extension cord with grounding plug. 2) The marked rating of an extension cord must be equal to or greater than the rating of this appliance. 3) It should be positioned such that it does not drape over the counter or tabletop where it can be pulled on by children intentionally.
- Do not operate any appliance with a damage cord or plug or after the appliance malfunction or has been damaged in any manner. Return the appliance to the nearest authorized service facility for examination, repair or adjustment.

- If the supply cord is damaged, it must be replaced by the manufacturer or its service agent or a similarly qualified person in order to avoid a hazard.
- Do not let cord hang over edge of table or counter.
- Do not place on or near a hot gas or electric burner, or in a heated oven.
- Place power cord in such a way it cannot be pulled on by children or cause a tripping hazard.
- Place power cord in such a way that it is not in contact with hot surfaces.
- The use of attachment not recommended or sold by manufacturer may cause fire, electric shock or injury.
- Do not touch the evaporator when using the ice maker or making ice to avoid being suffer from frostbite.
- Do not immerse any part of the product in water.
- To disconnect, turn any control to "OFF", then remove plug from wall outlet.
- Do not plug or unplug product with wet hands.
- Unplug the product before cleaning, maintaining and when not in use.
- Do not use with water that is microbiologically unsafe or of unknown quality.
- Do not clean your ice maker with any flammable fluids. The fumes may create a fire hazard or explosion.
- Do not overturn the ice maker. If the ice maker is overturned accidentally, make it stand steadily for 2 hours before power it on again.
- If the ice maker is brought in from outside in wintertime, do not use for a few hours, allowing the unit to warm up to the room temperature before operating.
- Never put flammable, explosive and corrosive articles into the ice maker.
- Never use the ice maker when there is flammable gas leakage.
- Never store or use gas and other flammable articles near the ice maker to avoid any fire.
- Unplug the ice maker before moving it to avoid damaging the refrigerating system.
- Do not attempt to disassemble, repair, modify, or replace any part of your product.
- This appliance can be used by children aged from 8 years and above and persons with reduced physical, sensory or mental capabilities or lack of experience and knowledge if they have been given supervision or instruction concerning use of the appliance in a safe way and understand the hazards involved. Children shall not play with the appliance. Cleaning and user maintenance shall not be made by children without supervision.
- Do not leave the appliance unattended while in use.
- Do not use outdoors.
- Do not use the appliance for other than intended use.
- Please abandon the ice maker according to local regulators as it uses flammable blowing gas and refrigerant.
- Please according to local regulations regarding disposal of the appliance for its flammable refrigerant and blowing gas.
- Save these instructions.

## **HOUSEHOLD USE ONLY**

## **KNOW YOUR ICE MAKER**

1. Top lid
2. Evaporator
3. Air outlet
4. Viewing window
5. Ice tray
6. Ice shovel
7. Ice basket
8. Ice scoop
9. Control panel
10. "MAX" water level
11. Water reservoir
12. Drain plug
13. Infrared light-emitting diode
14. Infrared light-receiving diode



## CONTROL PANEL



Key (with indicator)	Function
ON/OFF	Start or stop the appliance
ICE	Standby mode: "ICE" indicator blinks; Working condition: "ICE" indicator lights solidly.
ICE FULL	"ICE FULL" indicator lights up when the ice basket is full.
ADD WATER	"ADD WATER" indicator lights up when the water reservoir is lack of water.

## BEFORE FIRST USE

1. Please ensure the ice maker is level and on a stable table or platform to avoid malfunction.
2. The incline angle of the ice maker cabinet should not exceed 45° during transportation or use. Do not turn the ice maker upside down. Doing so could cause the compressor or refrigerating system to operate incorrectly. Please allow time for the fluids in the compressor to settle after the ice maker is moved or transported. Before using the ice maker for the first time, please wait for 2 hours after the unit has been leveled and positioned in the proper place.
3. Unpack the appliance, then check and make sure that all the accessories including ice basket and ice scoop etc. are complete. Please contact with the client service department if some accessories are missed.
4. The appliance must be placed on a dry and level surface with sufficient ventilation, far from heat sources such as ovens, heaters and corrosive gases. Leave an about 8-inch clearance on all sides of the ice maker for proper ventilation.
5. Do not fill the water reservoir with hot water. This may damage the ice maker. It isDo not use the appliance at a very cold environment (lower than 50 C).

6. Clean the appliance by following the operation of “CLEANING AND MAINTENANCE” before operate.

## **USING YOUR ICE MAKER**

1. Ensure that the drain plug at the bottom of water reservoir is closed well.
2. Plug the ice maker into the wall outlet, the “ICE” indicator blinks. Note: Please make the ice maker be rested for 30 minutes before plug if it has been moved.
3. Open the top lid and remove the ice basket.
4. Fill the water reservoir with drinking water. Note: Do not fill above the MAX water level mark.
5. Replace the ice basket and close the top lid.
6. Press the ON/OFF key and the “ICE” indicator lights solidly.
7. The ice-making cycle will last approximately 7-15 minutes, depending on the ambient temperature and water temperature.
8. The ice-making cycle starts with water being pumped into the ice tray situated below the evaporator. Over the next 7-15 minutes ice forms on the evaporator. Once this has completed, the ice tray will tilt backwards and the remaining water in the ice tray is drained back into the water reservoir. The ice cubes are then dropped from the evaporator and pushed forward into the ice basket by the ice shovel. The ice tray will automatically move back into position under the evaporator and start the next cycle.
9. The “ICE FULL” indicator will light up when the ice basket is full and the ice maker will stop the ice-making cycle automatically. Gently remove the ice from the ice basket with the ice scoop. About 5 seconds later, the ice maker will restart its ice making function automatically.
10. The “ADD WATER” indicator will light up when the water reservoir is lack of water and the ice-making cycle will stop automatically. At that time, remove the ice basket and add water to the water reservoir, and then press ON/OFF key again to restart the ice-making cycle.
11. When you have got your desired amount of ice, stop the ice making cycle by pressing the ON/OFF key and unplug the unit from the wall outlet.
12. Open the top lid and transfer the ice to a freezer. Note: The ice will last in the ice maker for up to a 18 hour period, depending on the ambient temperature.
13. Allow the ice maker to reach room temperature.
14. Suggest replacing the water every a week. Please empty the water reservoir if the ice maker is not used for a long time.

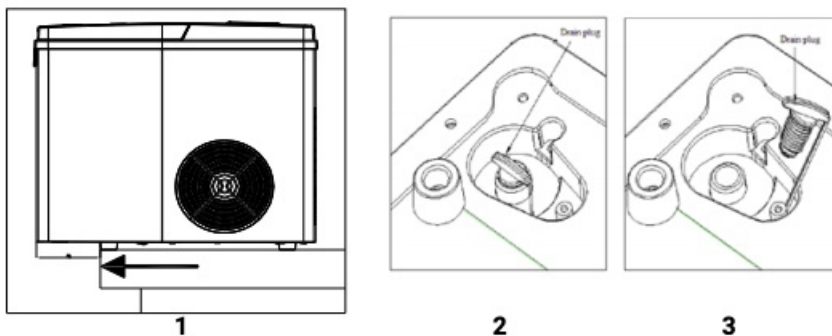
## **CLEANING AND MAINTENANCE**

Check and make sure the drain plug must be closed well. Fill the water reservoir with clean water, then hold and press the “ON/OFF” key for 10 seconds, the pump will start to pump water and keep running for 15 minutes, and it will enter into standby condition after running for 15 minutes, finally, open the drain plug and empty the water

To keep your ice tasting fresh and your ice maker looking great, we recommend cleaning your ice maker once per week.

1. Stop the ice-making cycle by pressing the ON/OFF key, unplug the ice maker from the wall outlet and allow it to warm up to room temperature.
2. If residual water is found in the ice tray, gently push the ice tray back so that all water drains into the water reservoir.

3. Move the appliance forward to a position 75mm away from the working table and open the drain plug to drain out excess water (see Fig.3, Fig.4 and Fig.5).
4. Remove the ice basket.
5. Clean the evaporator by following the operation as below: pour the clean water into the ice maker and run it to make ice for three cycles, and then empty the ice and water in the ice maker.
6. Clean the ice maker interior with a soft cloth soaked with warm water and vinegar, then rinse with clean water and then drain all the water.
7. Replace the drain plug well in position. Wash the ice basket and ice scoop in warm soapy water. Rinse and dry.
8. Clean the exterior of the ice maker with a soft damp cloth. Use a mild dishwashing soap, if necessary. Note: Do not use organic solvent, boiled water, detergent, strong acid and strong alkali etc. for cleaning.
9. Please empty the water reservoir and dry it for storage if the ice maker is not used for a long time.



## TROUBLESHOOTING

Problem	Possible causes	Solution
ADD WATER indicator turns on	Low water level or lack of water	Stop making ice, refill water and then press "ON/OFF" key to restart ice-making cycle.
	The water screen at the bottom of water reservoir is blocked.	Do cleaning
	Pump malfunction.	Send it to the authorized department for repair.
ICE FULL indicator lights up	Ice basket is full and the infrared light is blocked by the ice.	Remove the ice from ice basket.
	Infrared light-emitting diode & light-receiving diode do not work	Wipe up the foreign objects on the infrared light-emitting diode & light-receiving diode and restart the ice maker.
		Call Customer Service if the infrared light-emitting diode & light-receiving diode still can not work after wiping up the foreign objects on them and restarting the ice maker.
ADD WATER and ICE FULL indicators turn on simultaneously	The ice tray is not in the right position.	Check if the ice tray is blocked by something.
		Unplug the appliance and plug it again, then restart the appliance.
The ice collects together.	Making ice takes too much time.	Stop making ice and restart the ice-making cycle after the ice melts.
	The water in the water reservoir is of too low temperature.	Fill the water reservoir with water ranges between 8°C and 25°C.

Problem	Possible causes	Solution
The ice-making cycle seems normal but no ice is produced.	The ambient temperature or water temperature is too high.	Start the ice-making cycle at a environment with an ambient temperature less than 32°C and fill the water reservoir with some cold water.
	Refrigerating system leaks	Call customer service
	Refrigerating system blocks	Call customer service
Poor ice-making result	Poor heat dissipation.	Leave an 8-inch clearance on all sides of the ice maker for proper ventilation.
	The water temperature is too high.	Fill the water reservoir with water ranges between 8°C and 28°C
	The ambient temperature is too high.	Operate the ice maker at a environment with an ambient temperature between 10°C and 32°C.

## TECHNICAL PARAMETERS

Model: EP1069-GS

Applicable climate: ST/SN/N/T

Class: I

Power source: 220-240V/50Hz

Rated power: 105W

Refrigerant/Refrigerant amount: R600a/29g

Foaming agent: C5H10

Net weight: 9.03Kg

Housing: ABS

Unit size\*DXWXH)\* 348\*248\*295mm

## ENVIRONMENT FRIENDLY DISPOSAL



Distributed by: OCG Retail

Eemnesserweg 11-10

1251 NA Laren

the Netherlands

[klantenservice@omnichannelgroup.com](mailto:klantenservice@omnichannelgroup.com)

## Documents / Resources





**BluMill Ice Cube Machine** [pdf] User Manual  
BluMill, Ice Cube Machine



**BluMill ICE Cube Machine** [pdf] User Manual  
BluMill, ICE, Cube, Machine



**BluMill Ice Cube Machine** [pdf] User Manual  
Ice Cube Machine