

BLUMAGS Moby Game Changing Magnet



# BLUMAGS Moby Game Changing Magnet User Manual

[Home](#) » [BLUMAGS](#) » BLUMAGS Moby Game Changing Magnet User Manual 

## Contents

- [1 BLUMAGS Moby Game Changing Magnet](#)
- [2 SAFETY](#)
- [3 OPERATION](#)
- [4 CUSTOMISATION](#)
- [5 STORAGE, PRESERVATION & SHIPPING](#)
- [6 Documents / Resources](#)
  - [6.1 References](#)
- [7 Related Posts](#)

# BLUMAGS

## BLUMAGS Moby Game Changing Magnet



## SAFETY

Always keep a safe distance between the magnet and the following equipment

Pacemakers or other electronic life-sustaining equipment	2 m / 7 feet
Other magnets	400 mm / 16 inches
Steel surfaces and tools (except when intentional)	
Sensitive electronic and magnetic equipment such as phones, compasses, stripe cards and hard drives	

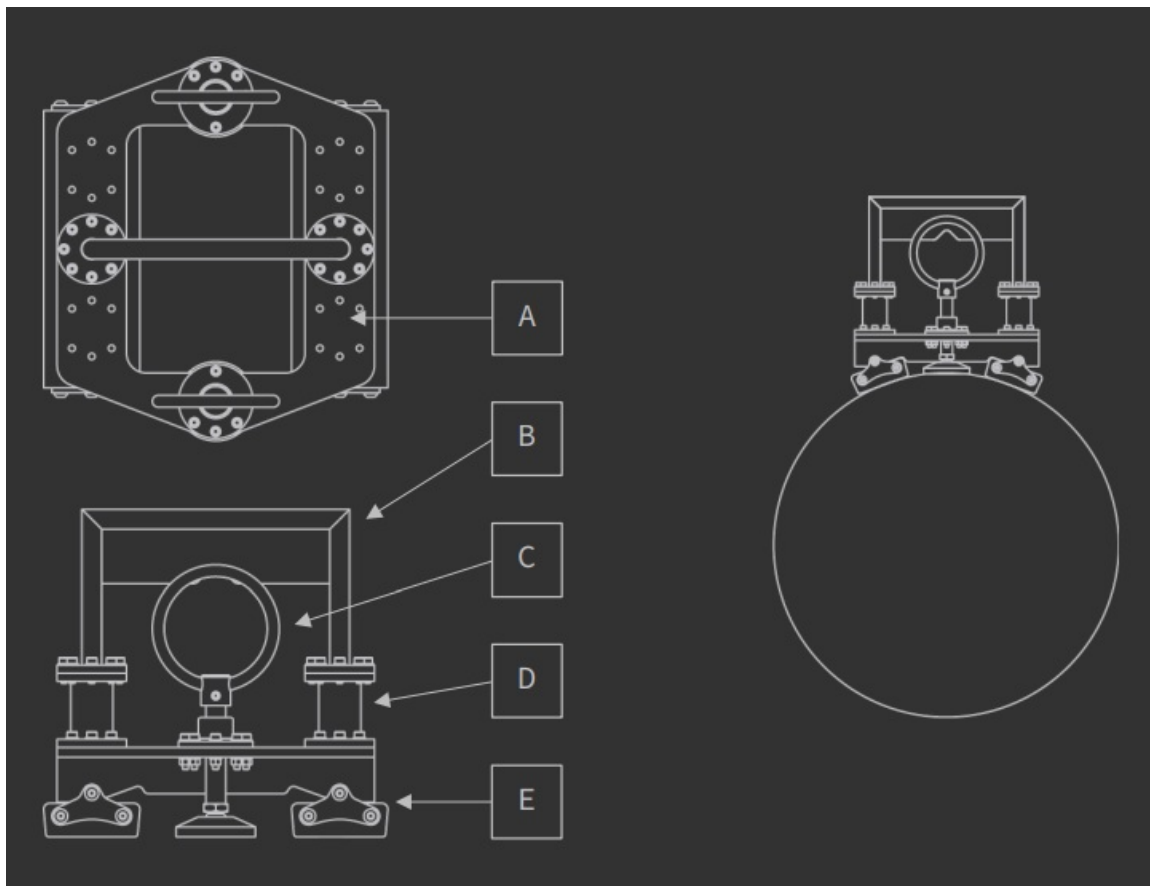
When applying the magnet (whether by hand or from an ROV), keep the release screw in its extended position to reduce the force of impact when it meets a steel surface. Do not put your fingers under the magnet. Be aware that the magnetic holding force may be reduced due to corrosion, paint, uneven steel surfaces, marine growth, steel thicknesses, alloy type, and pulling angle. Do not suspend yourself from the magnet or in any other way put yourself in danger should the magnet lose its grip. Likewise, refrain from suspending objects that may cause injury or damage if the magnet is unable to maintain its hold.

#### **Disclaimer**

Under no circumstances will Blumags / Apex Technology AS be held responsible or liable in any way for any claims, damages, losses, expenses, costs or liabilities whatsoever (including, without limitation, any direct or indirect damages for loss of profits or business interruption) resulting or arising directly or indirectly from your use of or inability to use this product.

#### **OPERATION**

The grip bar (B) is the primary interface for the ROV, intended as an anchoring point or for holding the magnet. The two flex joints (D) are intended to reduce the forces transferred to the ROV. The magnet is shipped with two release screws (C). Only one is needed for operation. When applying the magnet on a steel surface, keep the release screw(s) in the extended position to reduce the force of impact, then turn the screw(s) anti-clockwise until the magnetic modules (E) are in full contact with the surface. The magnet is released by turning the release screw(s) clockwise. The magnetic modules are hinged, allowing Moby to be attached to a tubular element.



## CUSTOMISATION

If so preferred, one of the two release screws can be removed from the magnet. The tool plate (A) has several holes which can be used to attach custom equipment on the magnet. Refer to the Technical Specification for dimensions, available for download at [www.blumags.com/pages/moby](http://www.blumags.com/pages/moby).

## STORAGE, PRESERVATION & SHIPPING

Clean the magnet with fresh water and dry it after each use. Dust and dirt may be difficult to brush off from the magnetic surfaces but can be easily removed with pressurized air. Otherwise, use a wet cloth. Inspect the flex joints for damage after use. The rubber might get damaged if subjected to excessive bending. Due to the metal parts inside, they will not break off entirely. Contact Blumags if you need to replace the flex joints. The magnet is shipped with metal sheets (keepers) at the bottom of the case. With the keepers, the magnet can be safely shipped by air without restrictions (under IATA packing instruction 953).

- Blumags by Apex Technology AS Oslo, Norway
- Org. No. 924 362 170
- [hi@blumags.com](mailto:hi@blumags.com)
- [www.blumags.com](http://www.blumags.com)



[BLUMAGS Moby Game Changing Magnet](#) [pdf] User Manual

Moby Game Changing Magnet, Moby, Game Changing Magnet, Changing Magnet, Magnet

## References

- [Blumags | Underwater magnets](#)
- [Moby – Blumags](#)
- [User Manual](#)

### Manuals+, Privacy Policy

This website is an independent publication and is neither affiliated with nor endorsed by any of the trademark owners. The "Bluetooth®" word mark and logos are registered trademarks owned by Bluetooth SIG, Inc. The "Wi-Fi®" word mark and logos are registered trademarks owned by the Wi-Fi Alliance. Any use of these marks on this website does not imply any affiliation with or endorsement.