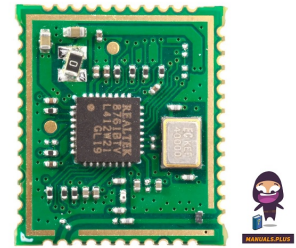




BP07B Wireless Module



BLUERIDGE BP07B Wireless Module User Manual

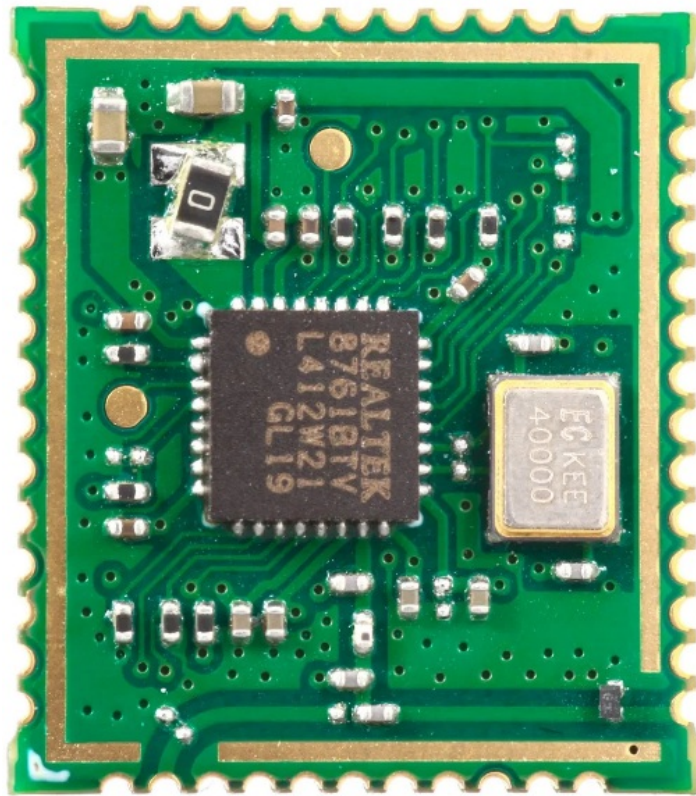
[Home](#) » [BLUERIDGE](#) » BLUERIDGE BP07B Wireless Module User Manual 

Contents

- [1 BLUERIDGE BP07B Wireless Module](#)
- [2 SPECIFICATION](#)
- [3 PREPARATION](#)
- [4 NETWORK CONFIGURATION](#)
- [5 HOW TO USE APP](#)
- [6 SPECIAL FUNCTIONS](#)
- [7 APP DECLARATION](#)
- [8 Declaration of conformity](#)
- [9 FCC STATEMENT](#)
- [10 Documents / Resources](#)
 - [10.1 References](#)



BLUERIDGE BP07B Wireless Module

**IMPORTANT NOTE:**

Read the manual carefully before connecting your Smart kit(Wireless module). Make sure to save this manual for future reference. Illustrations in this manual are for explanatory purposes. The actual shape shall prevail.

SPECIFICATION

- **Unit model:**BP07B,BP09B,BP12B,BP15B
- **Wireless Module Model:** EU-SK105, US-SK105
- **Antenna Type:** Printed PCB Antenna
- **Frequency Band:** 2400-2483.5MHz
- **Operation Temperature:**0 C~45 C/32 F~113 F
- **Operation Humidity:** 10%~85%
- **Power Input:** DC 5V/300mA
- **Maximum TX Power:** <20dBm

NOTE: The company will not be liable for any issues and problems caused by the Internet, Wireless Router, and Smart Devices. Please contact the original provider to get further help.

DOWNLOAD AND INSTALL APP

CAUTION: The following QR code is only available for downloading the APP. It is different with the QR code packed with the unit.



Android



iOS

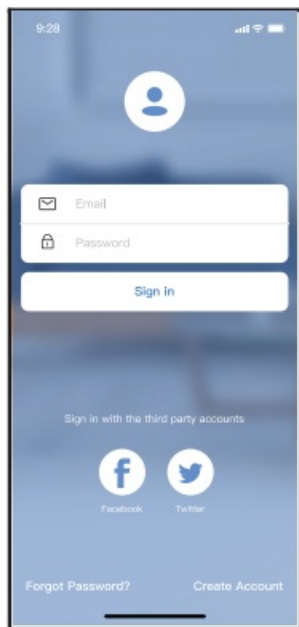
- Android Phone users: scan the Android QR code or go to Google Play, search for the 'Nethome Plus' App, and download it.
- iOS users: scan the iOS QR code or go to the APP Store, search the 'Nethome Plus' app, and download it.

PREPARATION

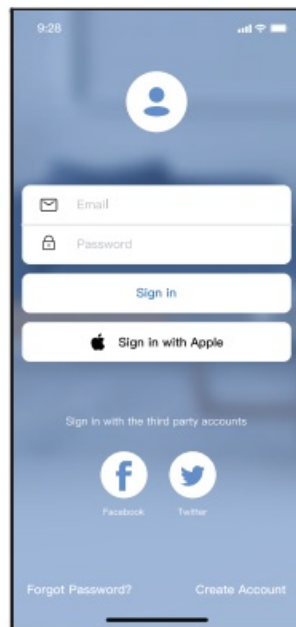
- Please ensure your mobile device is connected to a Wireless router. Also, the Wireless router has already connected to the Internet before doing user registration and network configuration.
- Make sure your mobile device has already been connected to the Wireless network that you want to use. Also, you need to forget another irrelevant Wireless network in case it influences your configuration process.

CREATE ACCOUNT

Reminder: When you register to use the app, you need to read and agree to the Data Privacy Notice.

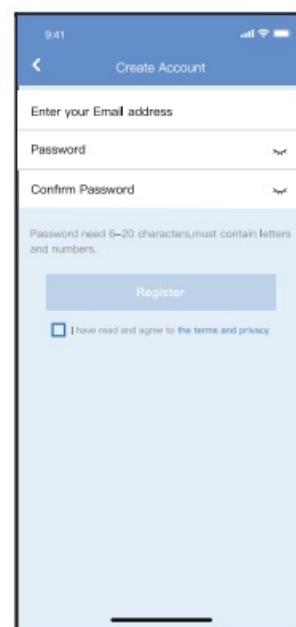


Android



iOS

① Click "Create Account"



② Enter your email address and password, and then click "Register"

NETWORK CONFIGURATION

Cautions

- It is necessary to forget any other network and make sure the Android or iOS device just connects to the Wireless network you want to configure.
- Make sure the Android or iOS device Wireless function works well and can be connected back to your original Wireless network automatically.

Kindly reminder

The user must finish all the steps in 8 minutes after powering on the AC, otherwise, you need to power on it again.

Using Android or iOS device to do network configuration

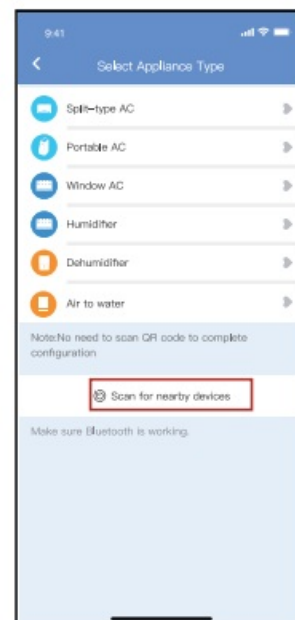
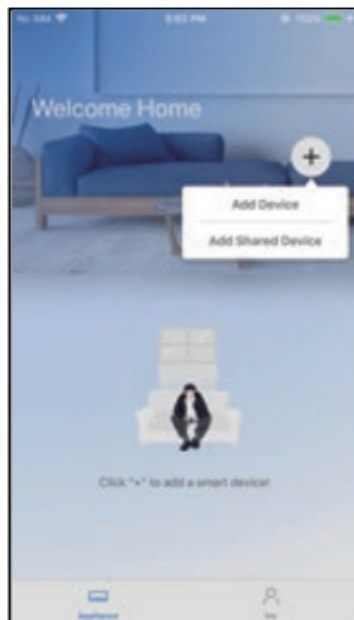
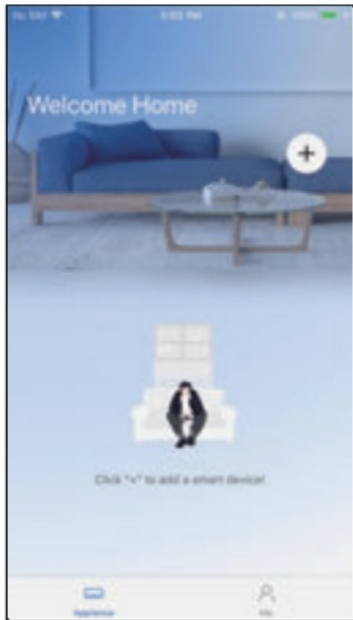
Make sure your mobile device has already been connected to the Wireless network that you want to use. Also, you need to forget another irrelevant Wireless network in case it influences your configuration process. Disconnect the power supply of the AC. Connect the power supply of the AC, and activate the AP mode (The pictures in the manual are for explanation purposes only. Your machine may be slightly different. Read the WIRELESS MODE IN USER'S MANUAL or INSTRUCTION MANUAL for detailed operations.). When AP appears in the display, It means that the AC WIRELESS has already entered into AP Mode. The user can do the next step configuration.

Note: There are two ways to finish the network configuration:

- Network configuration by Bluetooth scan
- Network configuration by selecting appliance type

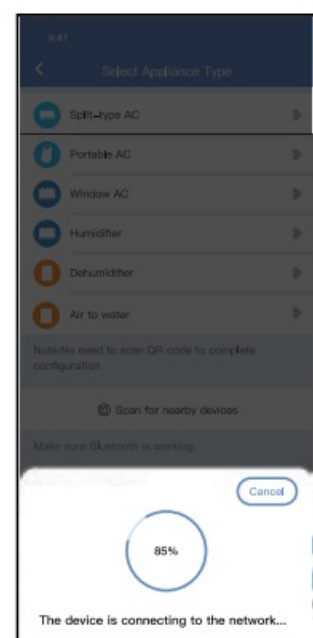
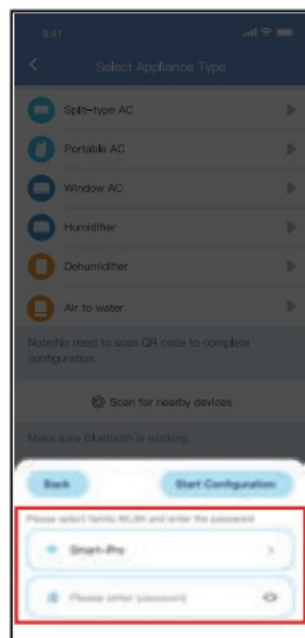
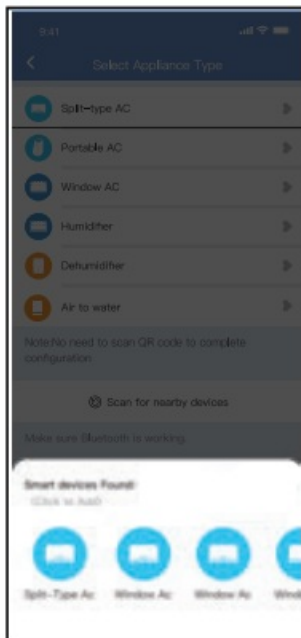
Network configuration by Bluetooth scan

Note: Make sure the bluetooth of your mobile device is working.

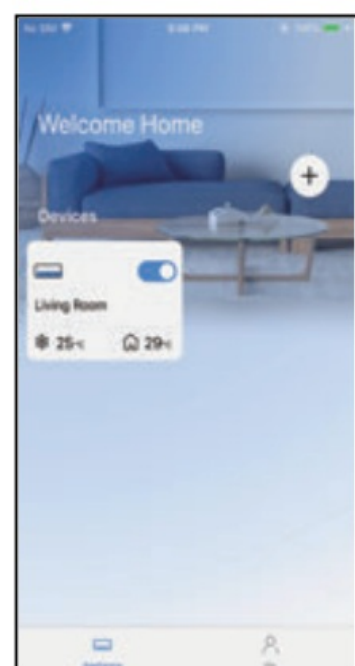
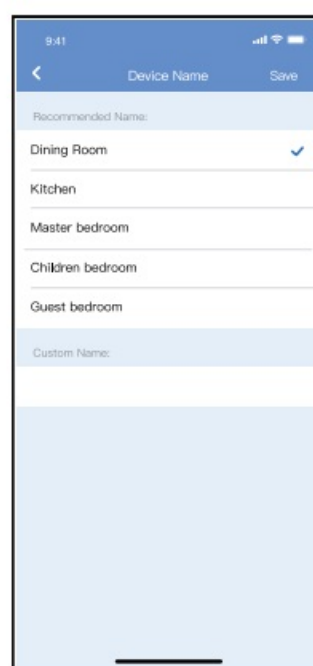
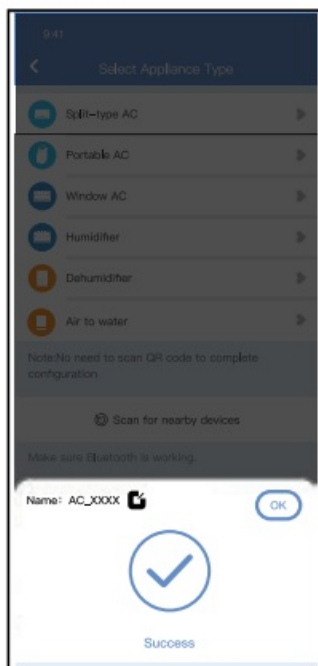


① Press “ + Add Device ”

② Press “Scan for nearby devices”

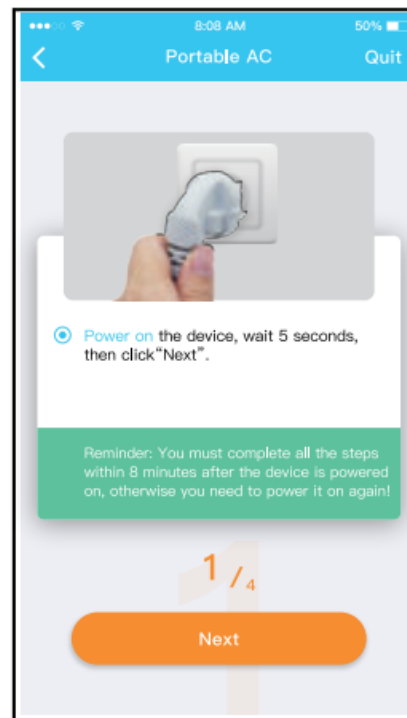
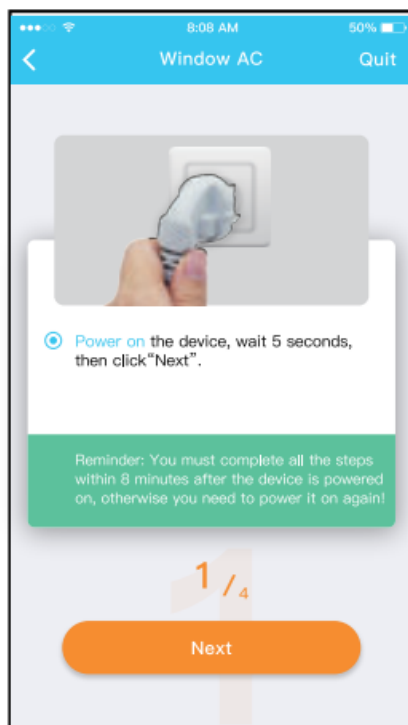
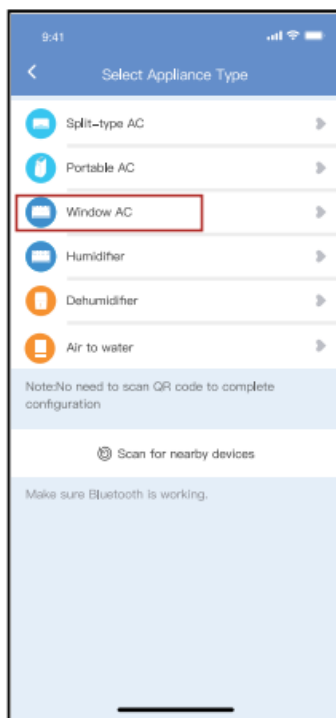


- ③ Wait smart devices to find, then click to add it ④ Select home wireless network, enter the password ⑤ Wait connecting to the network



- ⑥ Configuration Success, you can see the device on the list, you can modify the default name. ⑦ Bluetooth network configuration is successful, now you can see the device in the list.

Network configuration by selecting appliance type

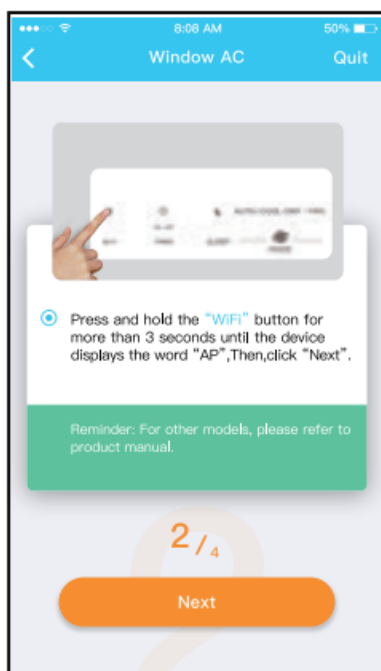


① If the bluetooth network configuration is failure, please select the appliance type.

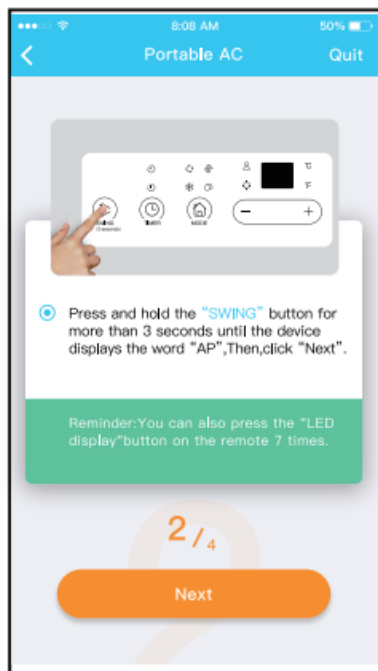
For Window AC

For Portable AC

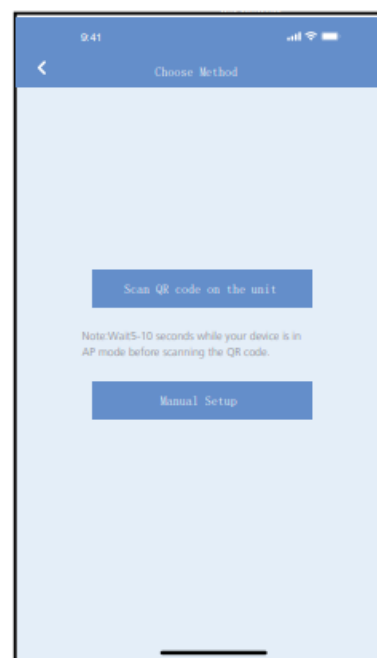
② Please follow the steps to enter "AP" mode.



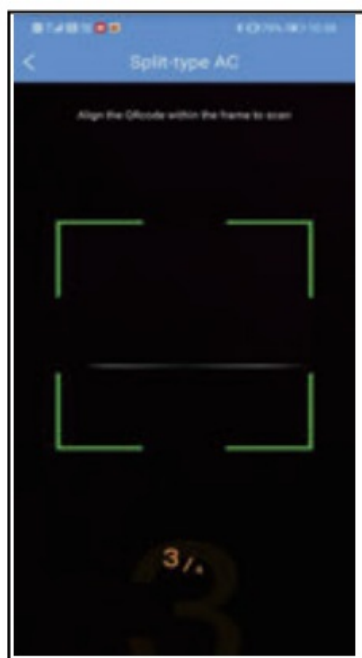
For Window AC



For Portable AC



③ Choose the network configuration method.



- ④ Choose the "Scan the QR code" method.



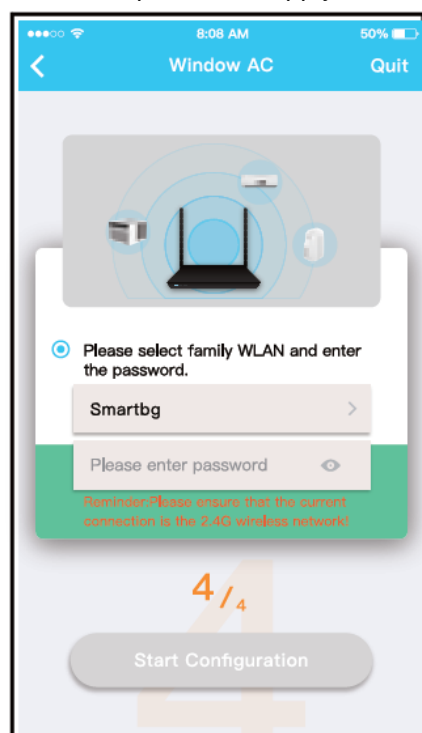
For Window AC



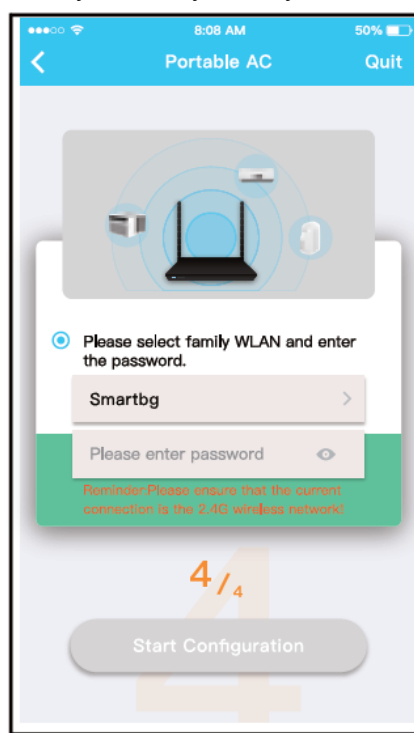
For Portable AC

- ⑤ When choose the "Manual Setup" method(Android). Connect to the wireless network(iOS).

NOTE: Steps 3 4 and apply to the Android system only. iOS system does not need these two steps.



For Window AC



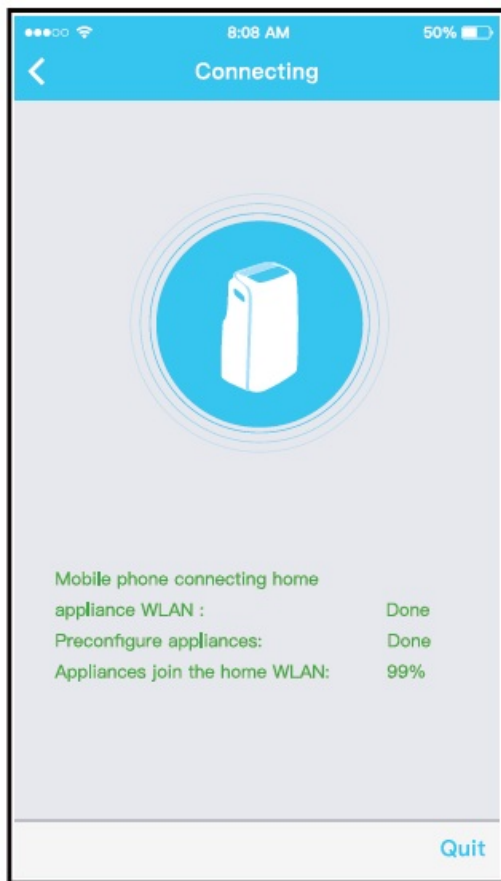
For Portable AC



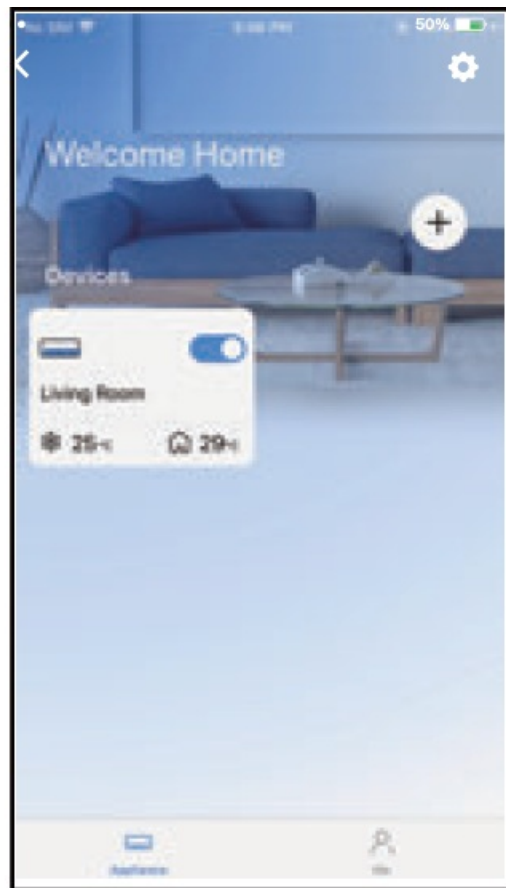
For Window AC

- ⑥ Please enter password

- ⑦ Network configuration is successful.



For Portable AC



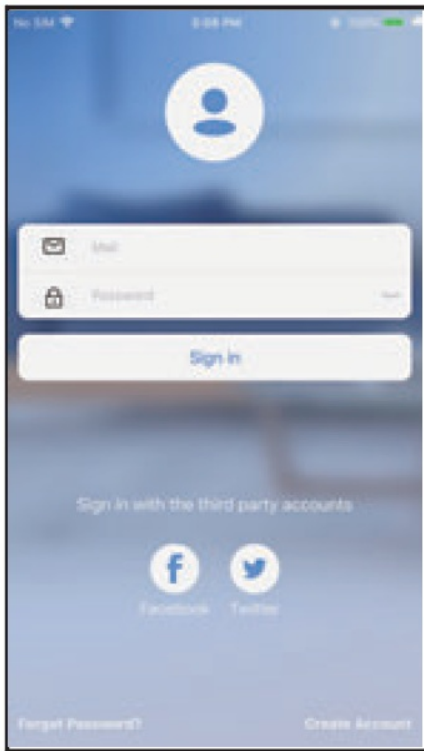
⑧ Configuration Success, you can see the device in the list.

NOTE

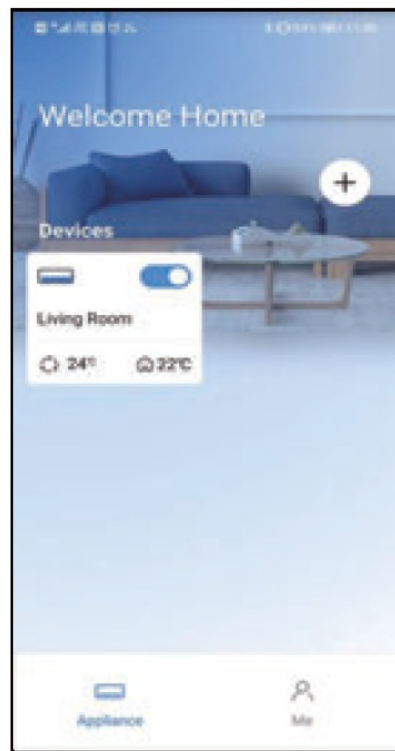
- When finishing the network configuration, the APP will display success cue words on the screen. Due to different internet environments, it is possible that the device status still displays “offline” .
- If this situation occurs, it is necessary to pull and refresh the device list on the APP and make sure the device status becomes “online”. Alternatively, the user can turn off the AC power and turn on it again, the device status will become “online” after a few minutes.

HOW TO USE APP

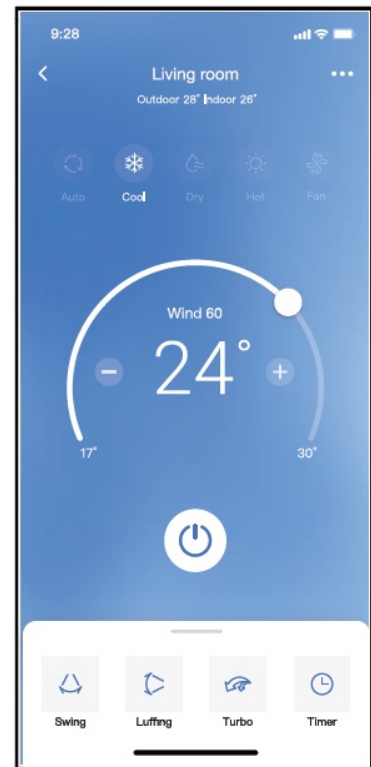
Please ensure both your mobile device and air conditioner are connected to the Internet before using the app to control the air conditioner via the Internet, please follow the next steps:



① Click “Sign in”



② Choose the air conditioner.



③ Thus, user can control air conditioners on/off status, operation mode, temperature, fan speed and so on.

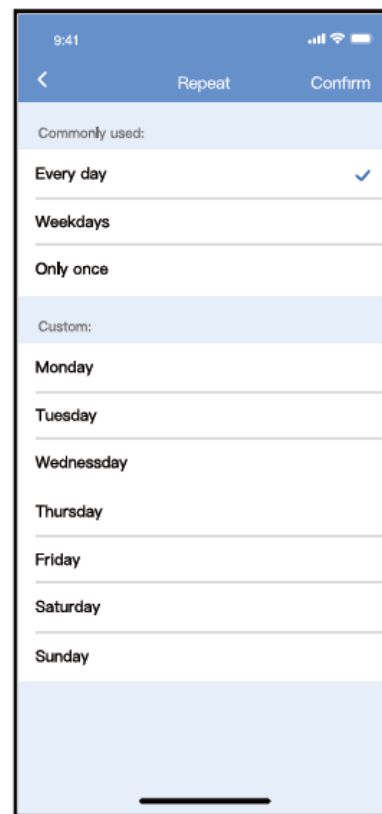
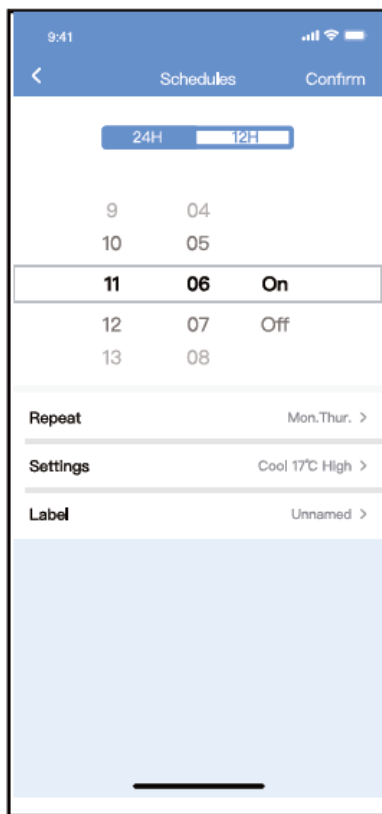
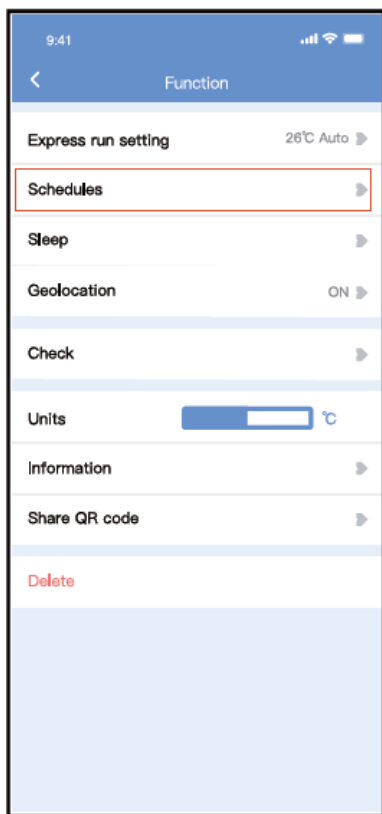
NOTE

Not all the functions of the APP are available on air conditioners. For example: ECO, Turbo, Swing function, please check the user manual to find more information.

SPECIAL FUNCTIONS

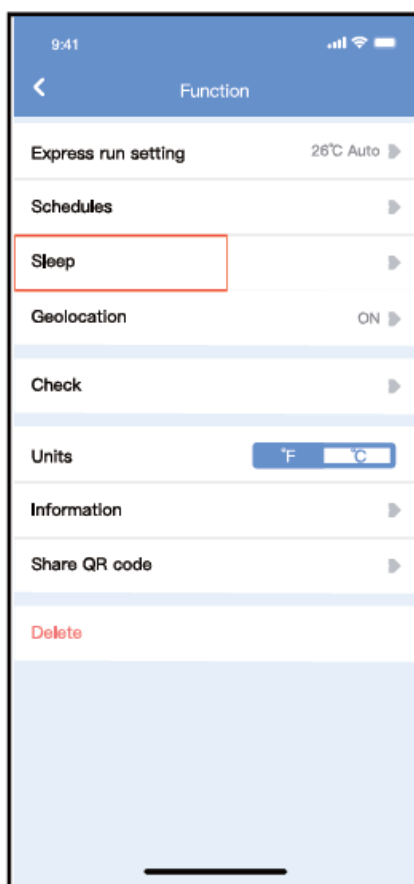
Schedule

Weekly, the user can make an appointment to turn the on or off AC on a specific time. Users also can choose circulation to keep the AC under schedule control every week.



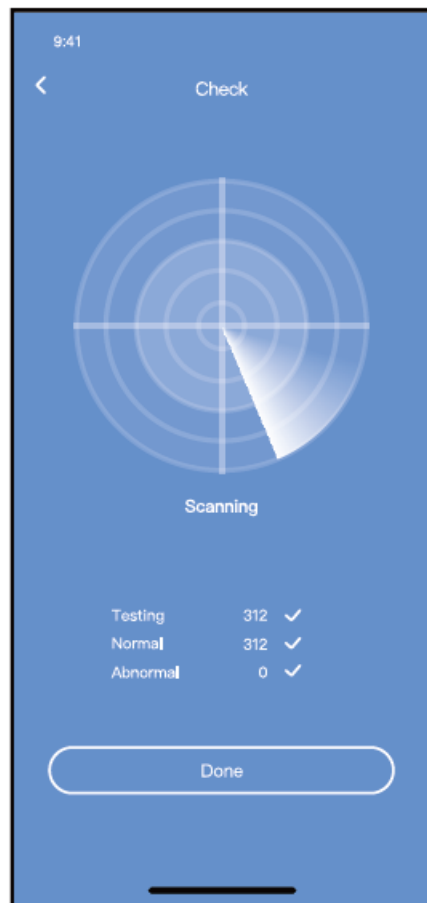
Sleep

User can customize their comfortable sleep by setting a target temperature.



Check

Users can simply check the AC running status with this function. When finishing this procedure, it can display the normal items, abnormal items, and detail information.

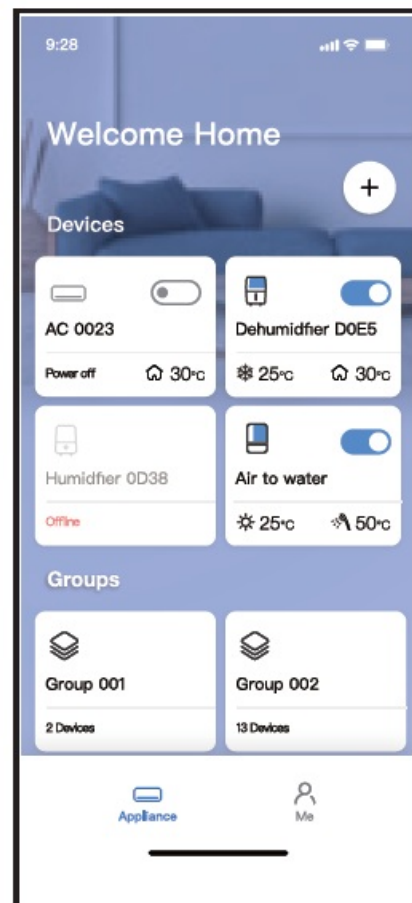
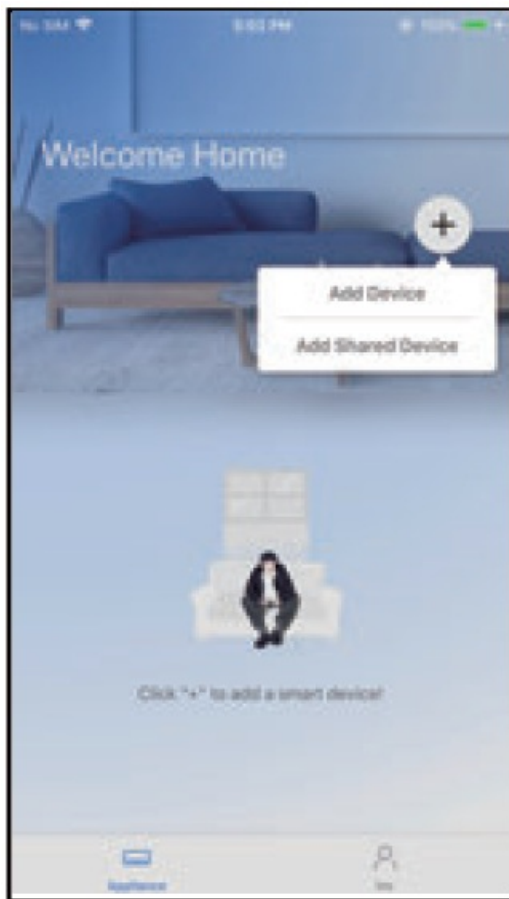


Share Device

The air conditioner can be controlled by multi-users at the same time by the Share Device function.



1. 1 Click “ Share QR code ”
2. 2 QR code display.



3. The other users must log in to the “Nethome Plus” app first, then click “Add Share Device” on their mobile, then ask them to scan the QR code.
4. Now the others can add the shared device.

APP DECLARATION

Applicable system: IOS, Android.

1. APP can not support the latest software version of Android and IOS systems.
2. Due to the special situation that may have occurred, we explicitly claim below that not all of the Android and IOS systems are compatible with the APP. We will not be responsible for any issue as a result of the incompatibility.
 - **Wireless safety strategy**
Smart kit only supports WPA-PSK/WPA2-PSK encryption and no encryption. WPA-PSK/WPA2-PSK encryption is recommended.

Cautions

1. Due to different network situations, the control process may return time-out sometimes. If this situation occurs, the display between the board and the App may not be the same, please do not feel confused.
2. The phone camera needs to be 5 million pixels or above to make sure scans the QR code well.
3. Due to different network situations, sometimes, request time-out could happen, thus, it is necessary to do network configuration again.
4. The APP system is subject to update without prior notice for product function improvement. The actual network configuration process may be slightly different from the manual, but the actual process shall prevail.

5. Please Check The Service Website For More Information. Hereby, we declare that this AC complies with the essential requirements and other relevant provisions of RE Directive 2014/53/EU. A copy of the full doc is attached.

NOTE:

All the illustrations in the manual are for explanation purposes only. Your unit may be slightly different. The actual shape shall prevail.

Declaration of conformity

CONTAINS FCC ID: 2ADQOMDNA21

CONTAINS IC: 12575A-MDNA21

This device complies with Part 15 of the FCC Rules and it contains license-exempt transmitter(s)/receiver(s) that comply with Innovation, Science and Economic Development Canada's license-exempt RSS(s).

Operation is subject to the following two conditions:

1. This device may not cause interference; and
2. This device must accept any interference, including interference that may cause undesired operation of the device.

Only operate the device by the instructions supplied. Changes or modifications to this unit not expressly approved by the party responsible for compliance could void the user's authority to operate the equipment. This device complies with FCC radiation exposure limits set forth for an uncontrolled environment. To avoid the possibility of exceeding the FCC radio frequency exposure limits, human proximity to the antenna shall not be less than 20cm (8 inches) during normal operation.


FCC STATEMENT

NOTE: This equipment has been tested and found to comply with the limits for a Class B digital device, under part 15 of the FCC Rules. These limits are designed to provide reasonable protection against harmful interference in a residential installation. This equipment generates, uses, and can radiate radio frequency energy and, if not installed and used by the instructions, may cause harmful interference to radio communications. However, there is no guarantee that interference will not occur in a particular installation. If this equipment does cause harmful interference to radio or television reception, which can be determined by turning the equipment off and on, the user is encouraged to try to correct the interference by one or more of the following measures:

- Reorient or relocate the receiving antenna.
- Increase the separation between the equipment and the receiver.
- Connect the equipment to an outlet on a circuit different from that to which the receiver is connected.
- Consult the dealer or an experienced radio/TV technician for help.

The company will not be liable for any issues and problems caused by the Internet, Wireless Router and Smart Devices. Please contact the original provider to get further help.

Documents / Resources

<div><div>USER MANUAL OF SMART KIT</div><div></div><div><small>IMPORTANT NOTICE: This document is the property of BLUERIDGE. It contains confidential information and is intended for internal use only. It is not to be distributed outside the company. If you are not an authorized user, please do not access this document. If you have received this document in error, please notify the sender immediately. Thank you for your cooperation.</small></div></div>	<div><div>BLUERIDGE BP07B Wireless Module [pdf] User Manual</div><div>BP07B, BP09B, BP12B, BP15B, BP07B Wireless Module, BP07B, Wireless Module, Module</div></div>
---	---

References

- [User Manual](#)

Manuals+. [Privacy Policy](#)

This website is an independent publication and is neither affiliated with nor endorsed by any of the trademark owners. The "Bluetooth®" word mark and logos are registered trademarks owned by Bluetooth SIG, Inc. The "Wi-Fi®" word mark and logos are registered trademarks owned by the Wi-Fi Alliance. Any use of these marks on this website does not imply any affiliation with or endorsement.