

## Bluedio T Share User Manual

[Home](#) » [Bluedio](#) » **Bluedio T Share User Manual** 

### **User Manual: Bluedio Speaker Model:T Share**

#### **Welcome to your new Bluedio speaker**

We appreciate your choice of Bluedio speaker. Before use, please read this user manual carefully and keep for future reference.

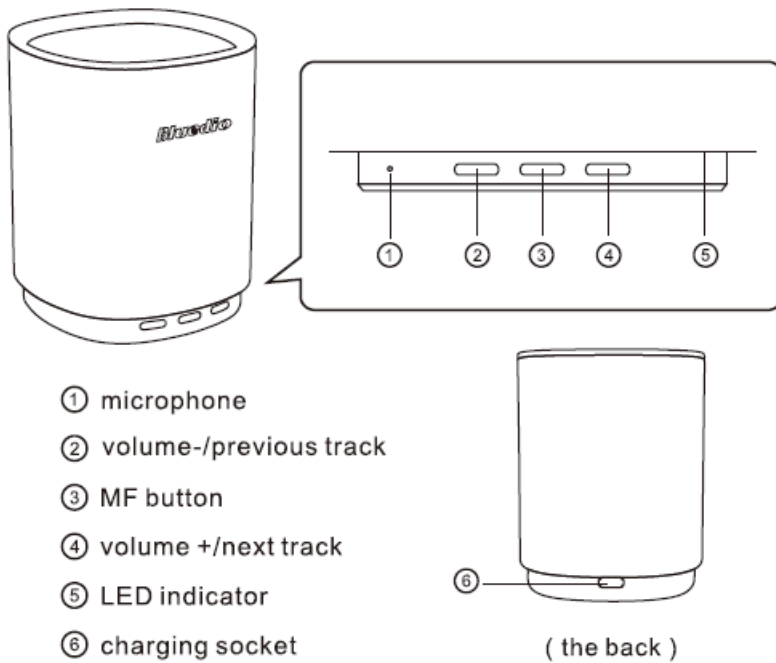
#### **Purchase verification**

You can find the verification code by scraping the coating off the security label that is affixed to the original packaging. Enter the code on our official website: [www.bluedio.com](http://www.bluedio.com) for purchase verification.

#### **Learn more and get support**

Welcome to visit our official website: [www.bluedio.com](http://www.bluedio.com); Or to email us at [aftersales@bluedio.com](mailto:aftersales@bluedio.com); Or to call us at 400-B89-0123.

#### **Speaker Overview**



### In the box



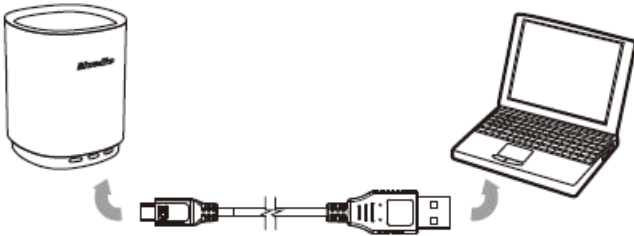
### Charge and battery

1. Charging cable: Use the included charging cable or the speaker may be damaged.
2. Charger: If you use a charger for charging, its output DC voltage should be  $5V \pm 0.3V$ , and its output current should exceed 1 000mA

#### Charge the speaker:

The built-in battery of the speaker is rechargeable and non-detachable. Do not replace the battery.

1. Turn off the speaker before charging.
2. Connect the Type-C plug (the smaller plug) of the charging cable to the charging socket of the speaker; Connect the other plug to the USB socket of your computer or other charging device. When charging, you will see the red LED stays on.
3. When fully charged (takes about 2-3 hours), you will see the blue LED stays on or the red LED goes out.



## Operation

### Power on

Press and hold the MF Button until you hear "Power on" or you see the blue light blinks.

### Power off

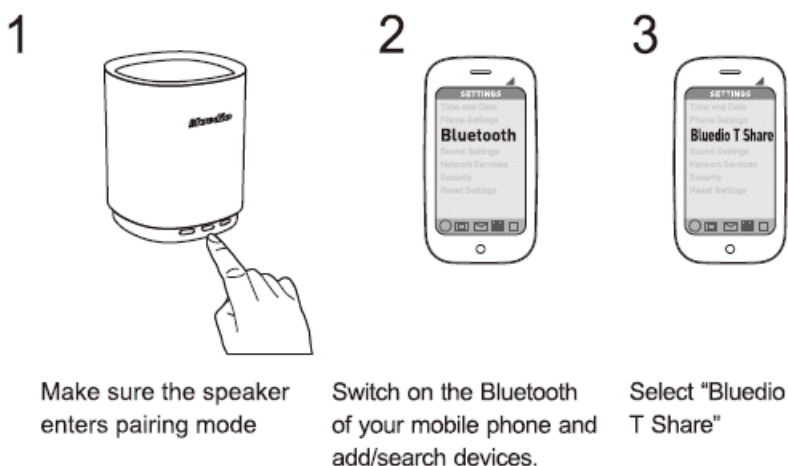
Press and hold the MF Button until you hear "Power off".

### Enter pairing mode

When the speaker is off, press and hold the M F Button until you hear "Pairing".

### Pair the speaker with your mobile phone

1. Keep the distance between the speaker and your mobile phone (or other device) within 1 meter. The closer, the better.
2. Make sure the speaker enters pairing mode. (See instruction "Enter pairing mode")
3. Switch on the Bluetooth of your mobile phone, add/search devices.
4. When 'Bluedio T Share' appears, select it. (If asked for a pass code: Enter "OOOO")
5. Finish.



### Using the speaker to talk (In Bluetooth mode)

#### Answer a call

When there is an incoming call, press the MF button once to answer it. Or use your mobile phone to answer it.

#### End a call

When you are on call, press the MF button once to end it. Or use your mobile phone to end it.

### **Reject a call**

When there is an incoming call, press and hold the MF button for 2 seconds to reject it. Or use your mobile phone to reject it.

### **Track/ Volume control (in Bluetooth mode)**

**Pause/Play:** Press the MF button once

**Previous track:** Press and hold the Volume- button for about 3 seconds

**Next track:** Press and hold the Volume+ button for about 3 seconds

**Volume Up:** Press the Volume+ button

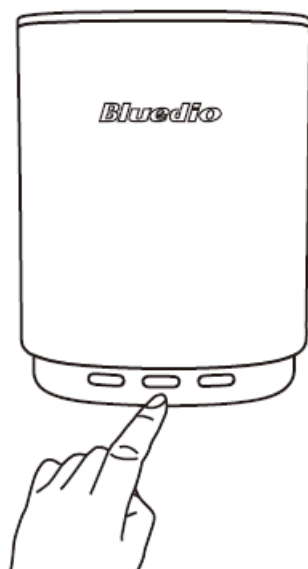
**Volume Down:** Press the Volume- button

### **Cloud function**

The speaker supports Alibaba Cloud Computing and other cloud platform. Users can download the app by scanning the QR code on page 61 .

### **Wake up the cloud (have installed the cloud app on your phone)**

Connect the speaker with your phone via Bluetooth; double-click the MF button.



### **Specifications**

Bluetooth version: 5.0

Bluetooth transmission frequency: 2.4GHz to 2.48GHz

Bluetooth operating range: up to 33 feet (free space)

Bluetooth profiles: A2DP, AVRCP, HSP, HFP

Frequency response: 50Hz-18,000Hz

Audio output power: 4W

Audio input: VRMSs1V

Standby time: 1000 hours

Music/talk time: 5 hours

Charging time: 2-3 hours for full charge

Operating temperature range: -10 °C to 50°C only

Please be noted specifications are subject to change without notice .

**Download**

**Questions about your Manual ? Post in the comments!**

[Manuals+](#)