

[Skip to content](#)

Manuals+

User Manuals Simplified.



BLUEDEE SK010 Dynamic RGB Computer Sound Bar User Manual

[Home](#) » [BLUEDEE](#) » BLUEDEE SK010 Dynamic RGB Computer Sound Bar User Manual



Only for white SK010

Contents [hide](#)

- [1 What's Included](#)
- [2 Product Diagram](#)
- [3 Button Function](#)
- [4 Wired Connection with 3.5 mm Plug](#)
- [5 Wireless Connection via Bluetooth](#)
- [6 LED Light Mode](#)
- [7 Troubleshooting of Sound](#)
- [8 Troubleshooting of Bluetooth Connection](#)
- [9 Worry-Free Service Guarantee](#)
- [10 Documents / Resources](#)
- [11 Related Posts](#)

What's Included



BLUEDEE Computer Soundbar

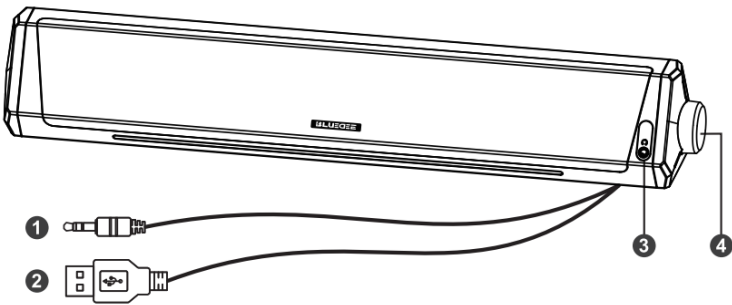


User Manual

Specification

| | |
|------------------------|-----------------------------------|
| Device Model | SK010 |
| Two Connection Options | Bluetooth 5.0 & 3.5 mm Audio Plug |
| Power Supply | USB Plug (no built-in battery) |
| Power Input | DC 5V-2A Max |
| Two Lighting Modes | Multicolor Breathing & Lights Off |

Product Diagram



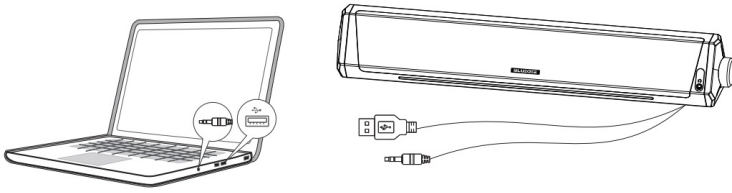
- 1. 3.5 mm Audio Plug
- 2. USB Power Plug
- 3. 3.5 mm Earphone Jack
- 4. Multi-function Button

Button Function

- **Volume Control:** Clockwise to raise the volume, and counterclockwise to lower the volume.
- **Pause/Play:** Press once.
- **Change lighting modes:** Press twice quickly.
- **Switch to Bluetooth/wired mode:** Hold for 3 seconds.

- **Clear the paired devices on the soundbar:** Hold for 7 seconds in Bluetooth mode.

Wired Connection with 3.5 mm Plug



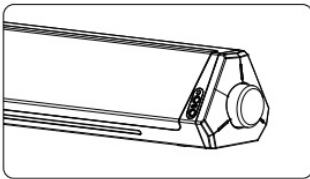
1. Insert the USB Plug into a USB port of a desktop, laptop, tablet, power bank, etc.
2. Insert the 3.5 mm Audio plug into the 3.5 mm jack of your device.

NOTE:

- Make sure the soundbar is not in Bluetooth mode.
- Extra driver or software installation is not needed, just plug and play.

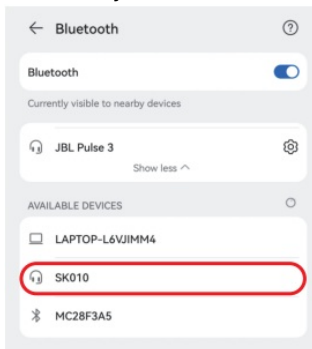
Wireless Connection via Bluetooth

1. Switch to Bluetooth mode



1. Hold the button for 3 seconds then release it.
2. The Bluetooth mode is on when the light flashes blue/red.

2. Pair with your device



1. Turn on the Bluetooth of your device.
2. Find "SK010" in the search results and tap to connect.

NOTE:

How to switch to wired mode from Bluetooth mode:

Hold the button for 3 seconds then release it, you will hear a tone meaning the Bluetooth mode is off.

LED Light Mode

1. Two lighting modes: multicolor breathing & lights off.
2. Change lighting modes: Press the button twice quickly.

Troubleshooting of Sound

Configure the sound output device on your device (System> Sound > Output > Choose your output device).

- > Raise the volume on your soundbar, device, or application.
- > Press the button of the soundbar to resume.
- > Reinsert the USB plug firmly into the USB power port.

Troubleshooting of Bluetooth Connection

- > Make sure that the soundbar Bluetooth pairing mode is on(LED light bar flashes blue/red).
- > Make sure the Bluetooth of the soundbar is not connected by other devices.
- > Clear the paired devices on the soundbar (hold the button for 7 seconds in Bluetooth mode), and delete the memorized "SK010" on your device, then reconnect the soundbar with your device

Worry-Free Service Guarantee

- 30 days free returns and exchanges.
- 18 months warranty.
- Lifetime friendly customer service.

Documents / Resources



[BLUEDEE SK010 Dynamic RGB Computer Sound Bar](#) [pdf] User Manual

SK010, Dynamic RGB Computer Sound Bar, SK010 Dynamic RGB Computer Sound Bar, Computer Sound Bar, Computer Soundbar, Sound Bar

[Manuals+](#),

- [home](#)
- [privacy](#)