




BLUEDEE SK010 Computer Soundbar User Manual

[Home](#) » [BLUEDEE](#) » BLUEDEE SK010 Computer Soundbar User Manual 

Contents

- [1 BLUEDEE SK010 Computer Soundbar](#)
- [2 What's Included](#)
- [3 Specification](#)
- [4 Product Diagram](#)
- [5 Button Function](#)
- [6 Wired Connection with 3.5 mm Plug](#)
- [7 Wireless Connection via Bluetooth](#)
- [8 LED Light Mode](#)
- [9 Troubleshooting of Sound](#)
- [10 Troubleshooting of Bluetooth Connection](#)
- [11 Worry-Free Service Guarantee](#)
- [12 Federal Communications Commission](#)
- [13 Documents / Resources](#)
- [14 Related Posts](#)



BLUEDEE SK010 Computer Soundbar



What's Included

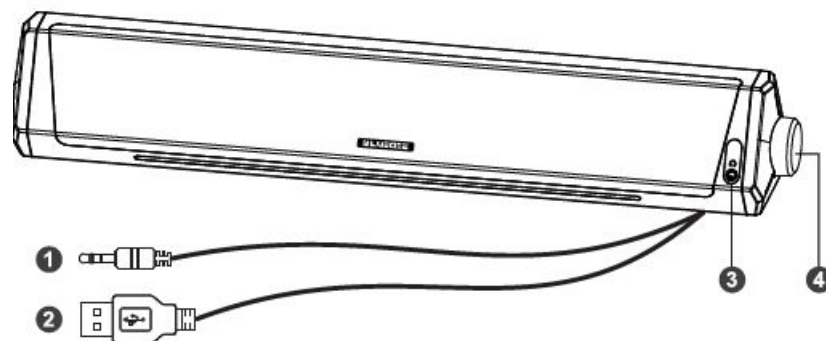


- BLUE DEE Computer Soundbar
- User Manual

Specification

Device Model	SK010
Two Connection Options	Bluetooth 5.0 & 3.5 mm Audio Plug
Power Supply	USB Plug (no built-in battery)
Power Input	DC 5V:::2AMax
Two LightingModes	Multicolor Breathing & Lights Off

Product Diagram

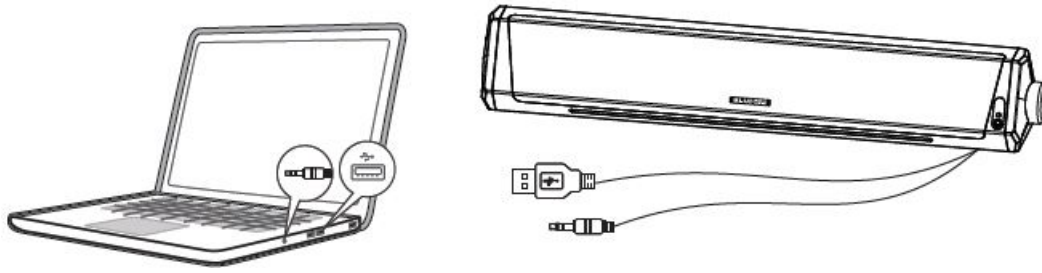


1. 03.5 mm Audio Plug
2. USB Power Plug
3. 0 3.5 mm Earphone Jack
4. Multi-function Button

Button Function

- **Volume Control:** Clockwise to raise the volume, and counterclockwise to lower the volume.
- **Pause/Play:** Press once.
- **Change lighting modes:** Press twice quickly.
- **Switch to Bluetooth/wired mode:** Hold for 3 seconds.
- **Clear the paired devices on the soundbar:** Hold for 7 seconds in Bluetooth mode.

Wired Connection with 3.5 mm Plug



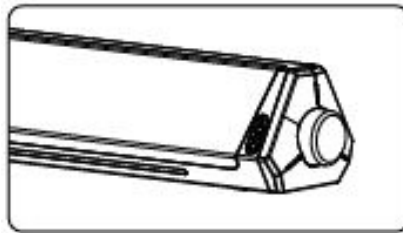
1. Insert the USB Plug into a USB port of a desktop, laptop, tablet, power bank, etc.
2. Insert the 3.5 mm Audio plug into the 3.5 mm jack of your device.

NOTE:

- Make sure the soundbar is not in Bluetooth mode.
- Extra driver or software installation is not needed, just plug and play.

Wireless Connection via Bluetooth

1. Switch to Bluetooth mode



- Hold the button for 3 seconds then release it.
 - The Bluetooth mode is on when the light flashes blue/red.
2. Pair with your device



- Turn on the Bluetooth of your device.
- 8 Find “SK01 O” in the search results and tap to connect.

NOTE: How to switch to wired mode from Bluetooth mode: Hold the button for 3 seconds then release it, you will hear a tone meaning the Bluetooth mode is off.

LED Light Mode

1. Two lighting modes: multicolor breathing & lights off.
2. Change lighting modes: Press the button twice quickly.

Troubleshooting of Sound

- Configure the sound output device on your device (System> Sound >Output > Choose your output device).
- Raise the volume on your soundbar, device, or application.
- Press the button of the soundbar to resume.
- Reinsert the USB plug firmly into the USB power port.

Troubleshooting of Bluetooth Connection

- Make sure that the soundbar Bluetooth pairing mode is on(LED light bar flashes blue/red).
- Make sure the Bluetooth of the soundbar is not connected by other devices.
- Clear the paired devices on the soundbar (hold the button for 7 seconds in Bluetooth mode), and delete the memorized “SK010” on your device, then reconnect the soundbar with your device.

Worry-Free Service Guarantee

- 30 days free returns and exchanges.
- 18 months warranty.
- Lifetime friendly customer service.

Service mailbox: support@bluedee-tech.com

Federal Communications Commission

This device complies with Part 15 of the FCC Rules. Operation is subject to the following two conditions: (1) this device may not cause harmful interference, and (2) this device must accept any interference received, including interference that may cause undesired operation.

Changes or modifications to this unit not expressly approved by the party responsible for compliance could void the user’s authority to operate the equipment.

NOTE: This equipment has been tested and found to comply with the limits for a Class B digital device, pursuant to Part 15 of the FCC Rules. These limits are designed to provide reasonable protection against harmful interference in a residential installation. This equipment generates uses and can radiate radio frequency energy and, if not installed and used in accordance with the instructions, may cause harmful interference to radio communications. However, there is no guarantee that interference will not occur in a particular installation. If this equipment does cause harmful interference to radio or television reception, which can be determined by turning the equipment off and on, the user is encouraged to try to correct the interference by one or more of the following measures:

- Reorient or relocate the receiving antenna.
- Increase the separation between the equipment and receiver.
- Connect the equipment into an outlet on a circuit different from that to which the receiver is connected.
- Consult the dealer or an experienced radio/TV technician for help.

This device and its antenna(s) must not be co-located or operated in conjunction with any other antenna or transmitter. Radiation Exposure Statement The device has been evaluated to meet general RF exposure requirements without restriction.

Documents / Resources



[BLUEDEE SK010 Computer Soundbar](#) [pdf] User Manual
SK010, 2A2QG-SK010, 2A2QGSK010, SK010 Computer Soundbar, Computer Soundbar