



**BBDS12IN1
DisplayLink
Docking
Station**



bluebuilt BBDS12IN1 DisplayLink Docking Station Instruction Manual

[Home](#) » [bluebuilt](#) » bluebuilt BBDS12IN1 DisplayLink Docking Station Instruction Manual 

Contents

- 1 [bluebuilt BBDS12IN1 DisplayLink Docking Station](#)
- 2 [Product Information](#)
- 3 [Product Usage Instructions](#)
- 4 [PRODUCT OVERVIEW](#)
- 5 [CONNECTING THE DOCKING STATION](#)
- 6 [EXPLANATION OF THE PORTS](#)
- 7 [PRODUCT SPECIFICATIONS](#)
- 8 [SAFETY INSTRUCTIONS](#)
- 9 [WARRANTY AND LIABILITY](#)
- 10 [Documents / Resources](#)
 - 10.1 [References](#)
- 11 [Related Posts](#)



bluebuilt BBDS12IN1 DisplayLink Docking Station



Product Information

Specifications

- **Input:** 22V5.9A 129.8W
- **Cable input:** 20V5A 100W
- **Adapter input:** 100-240V~ 50/60Hz 2.5A
- **Adapter output:** 22V5.9A 129.8W

Product Usage Instructions

Product Overview

The DisplayLink Docking Station with USB-C provides various ports for connectivity:

- On/off button
- USB-C 3.1
- USB TYPE-A 3.0 (max. 5 Gbps)
- LED function indicator
- SD/ microSD (SD/SDHC/SDXC, microSD/HC/XC)
- Audio port (3.5 mm)
- LAN/ethernet (10/100/1000 Mbps)
- HDMI (max. 3840 x 2160, 60Hz)
- Power Delivery (20V, max. 5A, 100W)
- External DC power (22V, 129.8W)

Connecting the Docking Station

1. Connect the docking station with the DC adapter to the power grid.
2. Use the on/off button to start the docking station.
3. Connect your laptop to the USB-C Power Delivery port for charging.
4. **Note:** Charging via the docking station requires laptop support for Power Delivery or Thunderbolt technology.

Explanation of the Ports

Instructions for using different ports:

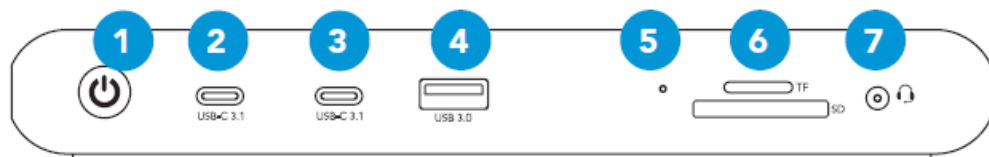
- Connect USB-C devices using ports 2 and 3.
- Insert an SD or microSD card into slot 6 for data access.
- Use the audio port (3.5 mm) for headphones.
- Connect to Ethernet for high-speed internet using port 8.
- Utilize HDMI ports for additional monitor or projector display with compatible laptop technology.
- Connect USB peripherals such as mouse, keyboard, or flash drive to ports 4, 11, and 12.
- **Note:** Only use HDMI cables as HDMI to DisplayPort cables are not supported.

FAQ

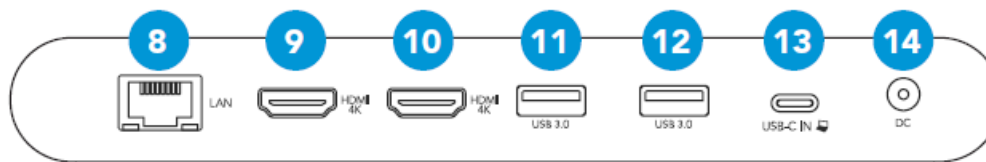
Q: What is the warranty period for the docking station?

A: The docking station comes with a five (5) year warranty from the date of purchase. For warranty terms and conditions, visit <https://www.coolblue.nl/en/customer-service>.

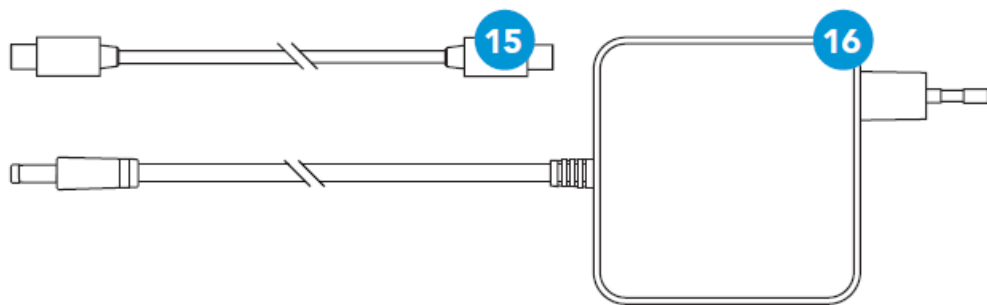
PRODUCT OVERVIEW



1. On/off button
2. USB-C 3.1
3. USB-C 3.1
4. USB TYPE-A 3.0 (max. 5 Gbps)
5. LED function indicator
6. SD/ microSD (SD/SDHC/SDXC, microSD/HC/XC)
7. Audio port (3,5 mm)



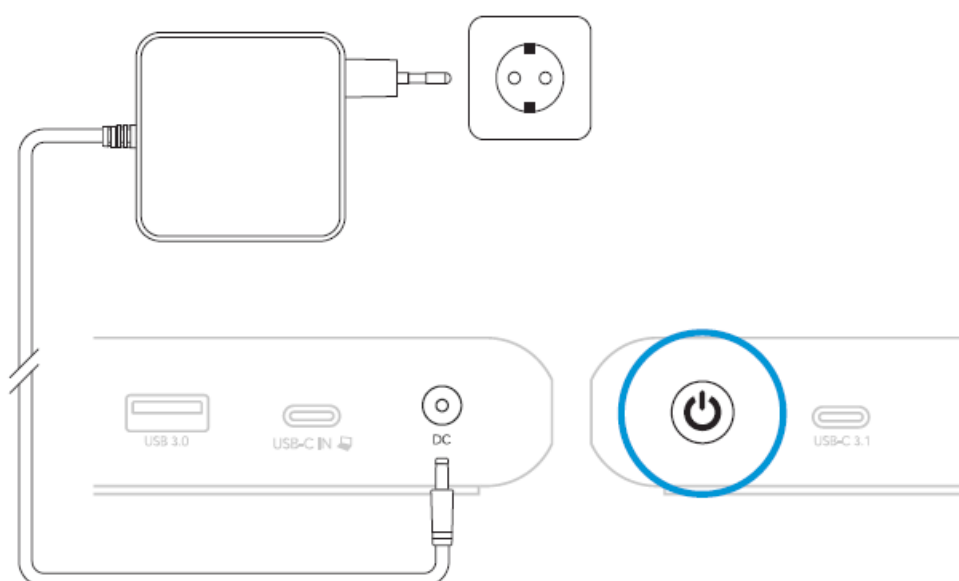
8. LAN/ethernet (10/100/1000 Mbps)
9. HDMI (max. 3840 x 2160, 60Hz)
10. HDMI (max. 3840 x 2160, 60Hz)
11. USB TYPE-A 3.0 (max. 5 Gbps)
12. USB TYPE-A 3.0 (max. 5 Gbps)
13. Power Delivery (20V, max. 5A, 100W)
14. External DC power (22V, 129.8W)



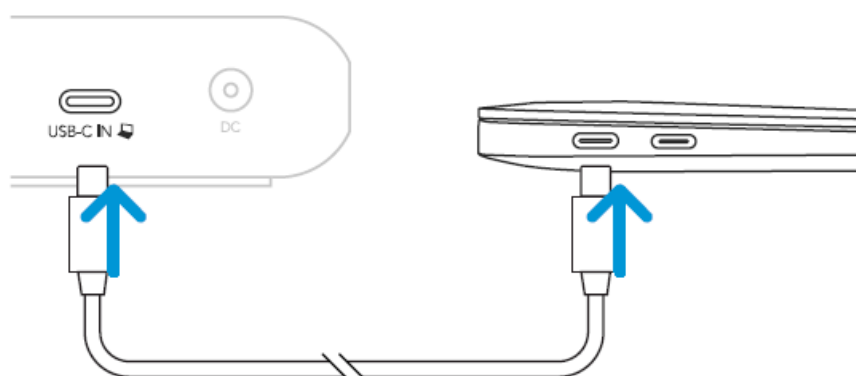
- 15. USB-C to USB-C cable
- 16. DC adapter (22V, 129.8W)

CONNECTING THE DOCKING STATION

Connect the docking station with the DC adapter 16 to the power grid.



Use the on/off button 1 to start the docking station.

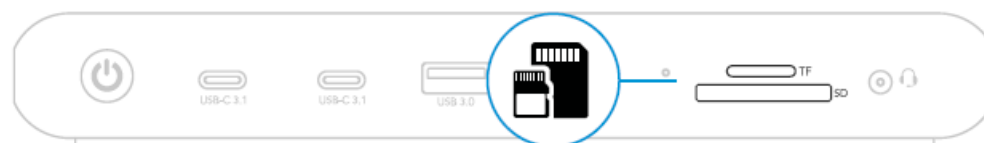


- Connect your laptop to the USB-C Power Delivery port 13.
- Charging your laptop via the docking station only works if your laptop supports Power Delivery (PD) or Thunderbolt 3 or 4 technology. View the manual of your laptop for more information.

EXPLANATION OF THE PORTS



Connect a device with USB-C, such as a data cable 2/3.



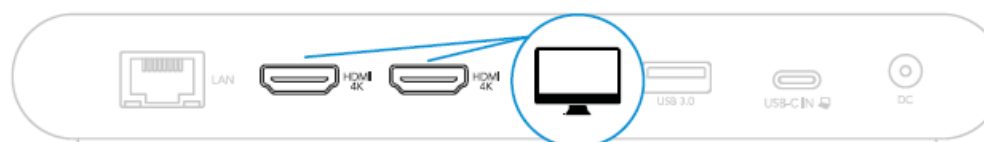
Place an SD or microSD card in the (micro) SD slot 6 to read your data.



Connect a device with a 3.5mm jack, such as headphones 7.



Connect an Ethernet cable to the Ethernet port 8. The docking station supports a speed of up to 1000Mbps. To reach this speed, you use a Category 5e (Cat5e) Ethernet cable or higher.



The HDMI connector 9/10 for viewing your screen on an extra monitor or projector only works if your laptop supports DisplayPort Alternate Mode or Thunderbolt 3 or 4 technology. View the manual of your laptop for more information.



Connect a USB device, such as a mouse, keyboard, or USB flash drive 4/11/12.



You can only achieve the maximum resolution of 4K at 60Hz if your laptop supports DisplayPort 1.4 via alternate mode via the USB-C port and if you download the DisplayLink® software. Scan the QR code or go to: grco.de/beky6L for the right program. For more information, check the manual of your laptop.

Note:

The docking station only works with HDMI cables. HDMI to DisplayPort cables are not suitable.

PRODUCT SPECIFICATIONS

- **Input:** 22V 5.9A 129.8W
- **Cable input:** 20V 5A 100W
- **Adapter input:** 100-240V~ 50/60Hz 2.5A
- **Adapter output:** 22V 5.9A 129.8W

BACKSIDE.

Turn over for use.

Input in Volt, Ampere, and Watt	22V 5.9A 129.8W
Standby current	≤3.5w
Weight	388±10g
Dimensions	190 x 82.8 x 25.1 mm
Housing material	Aluminium, ABS
Operating temperature	0°C ~ 40°C
Storage temperature	-10°C ~ 70°C
Electrical class I, II or III	II (adapter)

SAFETY INSTRUCTIONS

1. Always follow these instructions and note the warnings, save this document for future use as long as you own or use the device, and give it to the next users of the device.
2. Make sure you read and understand the entire manual before you use the device.
3. Use the device only in the application for which it is intended, namely as a device for charging laptops and/or connecting them to other devices and/or peripherals.
4. Before you connect a device, check if the output power of the charger provides enough power for the connected device.
5. Don't expose the device to extreme heat, like sunlight or fire. Avoid sudden temperature shifts.
6. Don't use or use the device in moist or wet conditions.

7. Don't use the device close to explosive gasses or flammable materials.
8. Don't burn the device.
9. Avoid contact with the chemicals of the battery. When the chemicals of the battery come into contact with the skin or the eyes, stop using the device right away, use plenty of water to rinse off the chemicals, and contact a doctor.
10. Don't throw, shake, vibrate, drop, or mechanically misuse the device, and don't expose it to impacts.
11. Don't cover the device with objects that affect the heat dispersal.
12. Only use the device with the included cables or with cables that came with the device. Don't use the device when the included cables are damaged or have gotten damaged over time.
13. Disconnect the device when it's not in use. Don't charge or discharge the device unsupervised.
14. Keep the device away from children.
15. Don't disassemble, open, or repair the device.
16. Only clean the device with a damp cloth with water. Don't use (aggressive) cleaning agents.
17. This device can be used by people with reduced physical, sensory, or mental capacity, or by people without experience and knowledge, given that they're supervised or have gotten instructions about safe use of the product and understand any dangers.


WARRANTY AND LIABILITY

This device comes with a warranty period of five (5) years after the date of purchase. For more information about the warranty terms and conditions, go to <https://www.coolblue.nl/en/customer-service>. Coolblue B.V. can in no way be held liable for material and immaterial damage suffered by you, others, the device, other property, or the property of others due to non-compliance with the instructions in this manual.

This symbol on the product indicates that it can't be treated as regular waste, but that it's supposed to be collected separately. Hand the product in at a collection point for the recycling of electronic devices if you live in the EU or in a different European country that has a separate collection system for electronic devices. If you correctly dispose of the product, you help to avoid risks for the environment and public health which might arise by the mishandling of disposed devices. Recycling materials contributes to the maintenance of our natural resources.

BlueBuilt is a registered trademark of Coolblue B.V., Weena 664, 3012 CN Rotterdam, The Netherlands.

Documents / Resources

	<p>bluebuilt BBDS12IN1 DisplayLink Docking Station [pdf] Instruction Manual 933695, BBDS12IN1, BBDS12IN1 DisplayLink Docking Station, BBDS12IN1, DisplayLink Docking Station, Docking Station, Station</p>
---	--

References

- [DisplayLink Downloads | Synaptics](#)
- [User Manual](#)

This website is an independent publication and is neither affiliated with nor endorsed by any of the trademark owners. The "Bluetooth®" word mark and logos are registered trademarks owned by Bluetooth SIG, Inc. The "Wi-Fi®" word mark and logos are registered trademarks owned by the Wi-Fi Alliance. Any use of these marks on this website does not imply any affiliation with or endorsement.