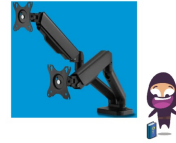


BlueBuilt 935001 Monitor Arm with Mechanical Spring for 2 Monitors



BlueBuilt 935001 Monitor Arm with Mechanical Spring for 2 Monitors User Manual

[Home](#) » [bluebuilt](#) » BlueBuilt 935001 Monitor Arm with Mechanical Spring for 2 Monitors User Manual 

Contents

- 1 [BlueBuilt 935001 Monitor Arm with Mechanical Spring for 2 Monitors](#)
- 2 [Monitor Arm with Mechanical Spring for 2 Monitors](#)
 - 2.1 [SET UP MONITOR ARM.](#)
- 3 [Documents / Resources](#)
 - 3.1 [References](#)



BlueBuilt 935001 Monitor Arm with Mechanical Spring for 2 Monitors



Product Specifications

- Product Name: Monitor Arm with Mechanical Spring for 2 Monitors
- Model Number: 935001 – BBMAG2M Version: V1.1
- Mounting Options: Clamp mount (A) and Feed-through mount (B)
- Desk Thickness Compatibility: Suitable for desks between 10 and 80 millimeters thick

Clamp Mount Installation

Clamping Attachment

Remove the cover from the base. Place the connection angle on the base and tighten the bolts.

Determine Desk Thickness

Depending on the desk thickness, place the desk clamp in the top or bottom holes and tighten the bolts.

Secure Clamp to Desk

Place the clamp on the desk and turn the screw upwards to firmly secure the base.

Monitor Arm with Mechanical Spring for 2 Monitors

- **Clamp mount (A)**

Mount your monitor arm to your desk with the clamp.



- **Feed-through mount (B)**

Drill a hole in your desk and feed the clamp through it.

SET UP MONITOR ARM.

A helping hand.





In the box:

1. Swivel arms
2. Lift arms
3. VESA plates
4. Base
5. Clamp
6. Clamp attachment
7. Mounting plate
8. Screw
9. Screws
10. Hex keys 4mm and 5mm
11. Screws and washers

From your own toolbox:

12. Screwdriver
13. Electric drill

CHECKLIST.

Does the tick.

Check the VESA size of your monitor. Then you know whether it fits on the monitor arm. The screw holes must match between the VESA plate and your monitor.

Do you have a question?

[Coolblue.nl/en/ customer-service](https://coolblue.nl/en/customer-service)

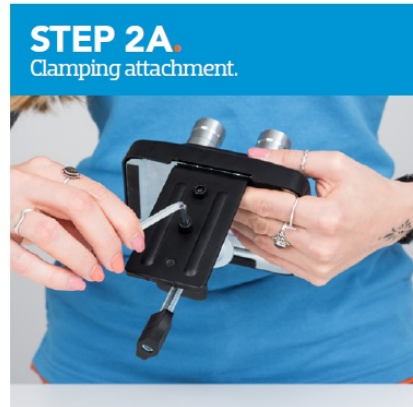
Coolblue is not liable for any injury, damage or bickering with your friend caused by an incorrect installation.

1. Suitable for desks between 10 and 80 millimetres thick.

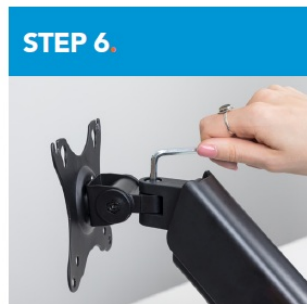
Remove the cover from the base 4 . Place the connection angle 6 on the base and tighten the bolts 9 .

2. Determine the thickness of your desk. Depending on this, place the desk clamp 5 in the top or bottom holes and tighten the bolts 9 .v

3. Place the clamp on the desk and turn the screw upwards so that the base is firmly secured.



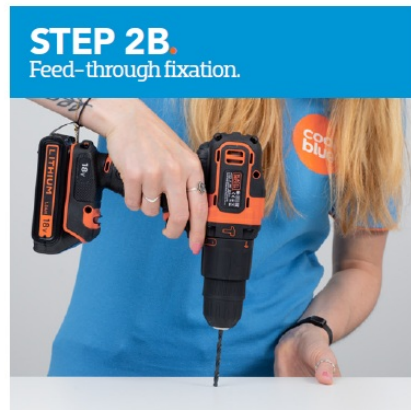
4. Place the swivel arms 1 on the base. Tighten the screws as desired. The tighter you go, the less smooth the arms will move.
5. Place the lift arms 2 . Tighten the screws as desired.
6. Place the VESA plates 3 on the monitor arm and tighten the bolts 8 .
7. Place your monitor on a cloth and place the top screws 11 in the monitor. Use the washers 11 as an option for extra reinforcement.



8. Slide the monitors onto the VESA plates and screw the lower screws 11 into the monitor.
9. Slide the cable tray upwards to open it. Use this to conceal your monitor cables and close it again.



1. Suitable for desks between 10 and 45 millimetres thick.
Unscrew the disc from the clamp 5 and unscrew the connection angle 6
2. Drill two 10-millimetre holes through your desk.
3. Place the fixing plate 7 around the feed-through. Then screw it through the hole into the base until it is firmly secured.



BACKSIDE.
Turn over for use.

BlueBuilt is a registered trademark of Coolbue B.V., Weena 664, 3012 CN Rotterdam, The Netherlands.

Documents / Resources



BlueBuilt 935001 Monitor Arm with Mechanical Spring for 2 Monitors [pdf] User Manual
935001 Monitor Arm with Mechanical Spring for 2 Monitors, 935001, Monitor Arm with Mechanical Spring for 2 Monitors, Mechanical Spring for 2 Monitors, Spring for 2 Monitors

References

- [Coolblue - tout pour un sourire](#)
- [Coolblue - alles voor een glimlach](#)
- [Kundendienst | Coolblue - Kostenlose Lieferung & Rückgabe](#)
- [Coolblue - anything for a smile](#)
- [Klantenservice - Coolblue - alles voor een glimlach](#)
- [User Manual](#)

[Manuals+](#), [Privacy Policy](#)

This website is an independent publication and is neither affiliated with nor endorsed by any of the trademark owners. The "Bluetooth®" word mark and logos are registered trademarks owned by Bluetooth SIG, Inc. The "Wi-Fi®" word mark and logos are registered trademarks owned by the Wi-Fi Alliance. Any use of these marks on this website does not imply any affiliation with or endorsement.