

BLUE OX BX88417 2 Receiver Adjustable Drop Receiver Add On User Manual

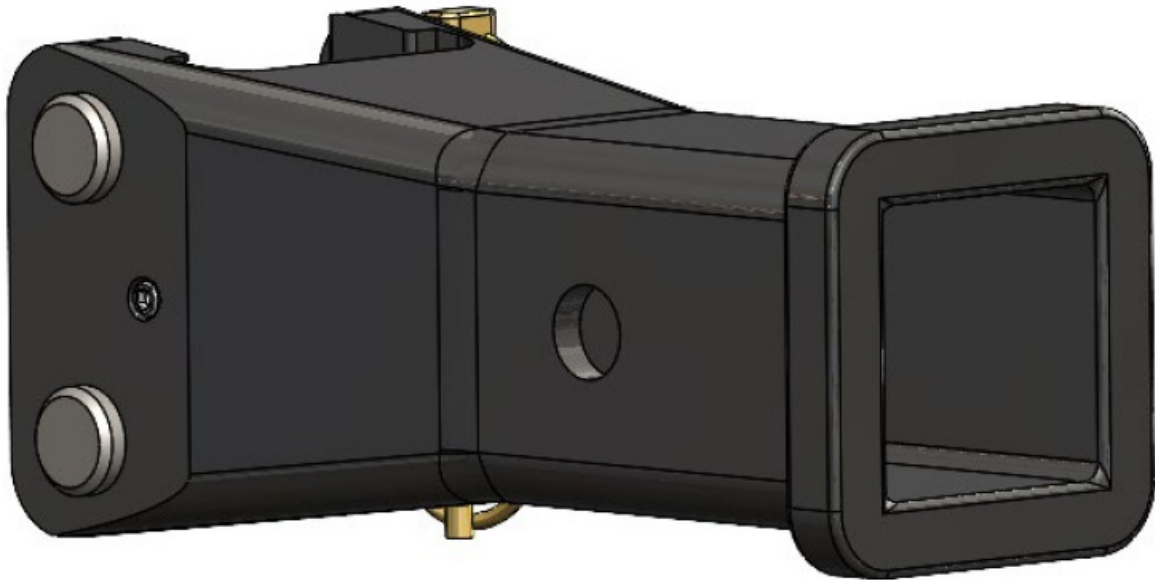
[Home](#) » [BLUE OX](#) » BLUE OX BX88417 2 Receiver Adjustable Drop Receiver Add On User Manual 

Contents

- [1 BLUE OX BX88417 2 Receiver Adjustable Drop Receiver Add On](#)
- [2 Product Information](#)
- [3 Product Usage Instructions](#)
- [4 Installation Instructions](#)
- [5 Description](#)
- [6 CUSTOMER SERVICE COMMITMENT](#)
- [7 Documents / Resources](#)
 - [7.1 References](#)
- [8 Related Posts](#)



BLUE OX BX88417 2 Receiver Adjustable Drop Receiver Add On



Product Information

The BX88417 is an adjustable drop receiver add-on designed for flat towing use. It has a weight rating of 500 lbs when used as an add-on receiver with accessories such as a bike rack, and a weight rating of 10,000 lbs when used as a replacement receiver for flat towing.

It comes with the following items:

- 1 Bolt Bag (Part No. 63-4938)
- 1/4-20 x 3/8 Set Screw, SS (Part No. 201-1142)
- 2 Adjustable Drop Receiver (Part No. 210-0197)
- 2 3/16 x 1-1/4 Lynch Pin (Part No. 299-0829)
- 1 1/8 Drive x 3-3/4 Long Hex Key (Part No. 229-1227)
- 2 5/8 Dia. x 3-1/2 Eff. Pin, ZP (Part No. 299-0801)

Product Usage Instructions

1. Visit www.blueox.com for the latest version of the installation instructions.
2. Ensure that the add-on receiver and products used with the add-on receiver do not interfere with the primary receiver or flat towing products.
3. Install the adjustable receiver onto the receiver shank using the 5/8 x 3-11/16 pins with 3/16 x 1-1/4 lynch pins above the primary receiver. Move up or down one hole on the receiver to adjust the height.
4. Insert the set screw to eliminate any excess play.
5. Make sure that the add-on accessory weight does not exceed the hitch weight rating of 500 lbs.

Please visit www.blueox.com for the latest version of these installation instructions

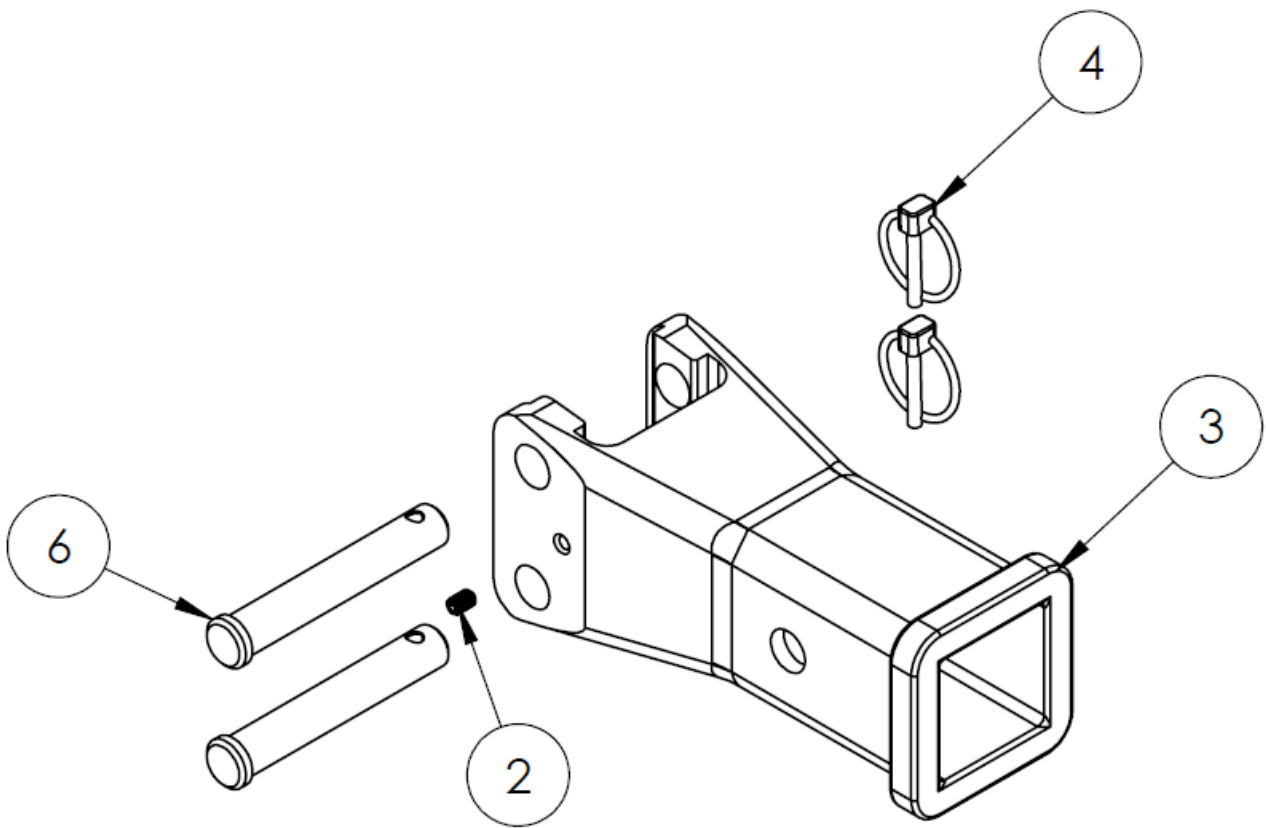
2" Receiver, Adjustable Drop Receiver Add-On BX88417 *500 lb. Weight Rated when used as an add-on receiver with accessories such as a bike rack, etc.* 10,000 lb. Weight Rated when used as a replacement receiver for flat tow

Tools Required

- Tape Measure

Installation Instructions

Note: For Flat Towing Use Only



1. Install the adjustable receiver onto the receiver shank, using the 5/8" x 3-11/16" pins with 3/16" x 1-1/4" lynch pins above primary receiver. Ensure that the add-on receiver and products use with the add-on receiver do not interfere with primary receiver or flat towing products.

Note: Moving up or down one hole on the receiver allows for 1" of adjustment.

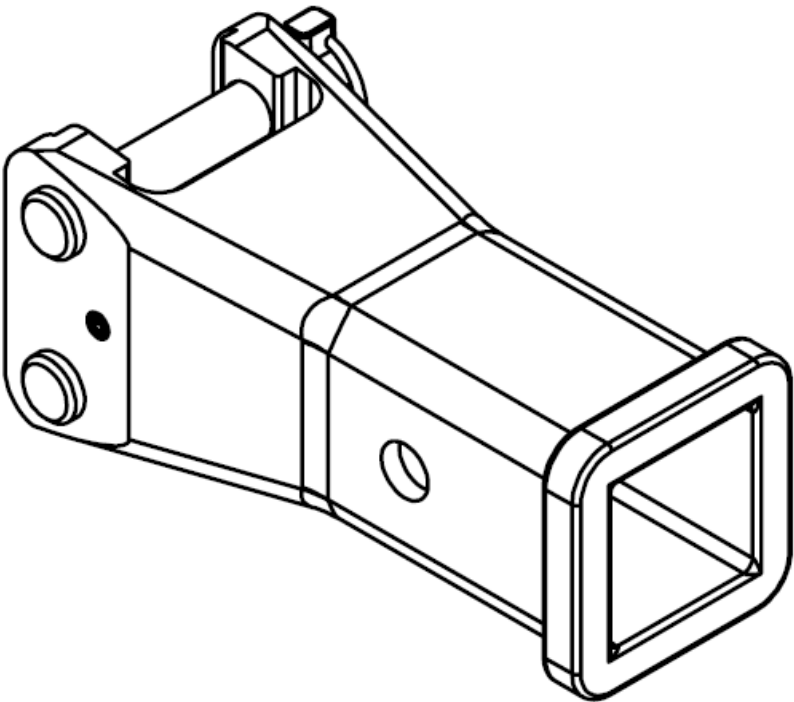
Note: When properly installed the lynch pin ring will snap back onto itself, and the chamfered side will be facing outwards.

2. Insert set screw to eliminate any excess play.

Note: Add-on accessory weight should not exceed the hitch weight rating of 500 lbs

Description

Item No.	Part No.	Description	Qty.
1.....	63-4938	Bolt Bag	1
2.....	201-1142	1/4"-20 x 3/8" Set Screw, SS	1
3.....	210-0197	2" Adjustable Drop Receiver	1
4.....	299-0829	3/16" x 1-1/4" Lynch Pin	2
5.....	229-1227	1/8" Drive x 3-3/4" Long Hex Key	1
6.....	299-0801	5/8" Dia. x 3-1/2" Eff. Pin, ZP	2

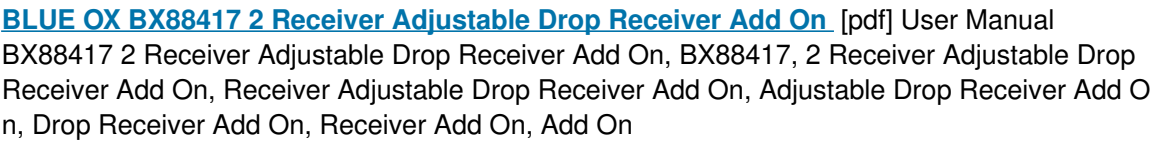


CUSTOMER SERVICE COMMITMENT

- Blue Ox® is committed to providing you with exceptional customer care throughout your lifetime with our products. Our team is here to assist you with any questions you may have regarding the performance of your product. Simply call [402-385-3051](tel:402-385-3051) and you can speak with our customer care team.
- Additionally, please visit our website to see which rallies our Destination America team will be attending. For a nominal fee, our service technician will service your towing system to ensure it's in proper working condition. Also, as a commitment to our customers, should you visit our factory, you can stay at our full service Blue Ox® campground at no charge along with enjoying a factory tour.
- Again, thank you for being our customer and for the confidence you have shown in the performance of our products. It is because of customers like you we enjoy the success we have today

© 2013 Blue Ox
 One Mill Road, Industrial Park Pender, Nebraska 68047
Phone: [402-385-3051](tel:402-385-3051)
Fax: [402-385-3360](tel:402-385-3360)
www.blueox.com

Documents / Resources



This website is an independent publication and is neither affiliated with nor endorsed by any of the trademark owners. The "Bluetooth®" word mark and logos are registered trademarks owned by Bluetooth SIG, Inc. The "Wi-Fi®" word mark and logos are registered trademarks owned by the Wi-Fi Alliance. Any use of these marks on this website does not imply any affiliation with or endorsement.