

Contents [[hide](#)]

[1 Blue Ocean Gear PLOTTERLINK Software](#)

[2 Introduction](#)

[3 Troubleshooting](#)

[4 FAQs](#)

[5 Documents / Resources](#)

[5.1 References](#)



Blue Ocean Gear PLOTTERLINK Software



Introduction

Blue Ocean Gear smart buoys enable you to track your gear and gather valuable sensor data. This manual explains how to see the location of your smart buoys on your TimeZero™ plotter. To purchase TimeZero™, contact a TimeZero reseller.

System Requirements

Your computer must be running TimeZero™ Professional – note that other versions of TimeZero™, such as 'Navigator' do not allow buoy data to be imported.

In order to run TimeZero™ Professional, your system should meet these requirements:

- Microsoft® Windows® 8.1 or Windows® 10/11 (64-bit operating system)
- CPU 2 GHz Intel® Core™ i5 4th generation or equivalent
- 4GB of RAM (8GB recommended)
- Video Board:
 - Minimum – Intel HD4400 Graphic Chipset (i5 4th generation with HD4400 or above)
 - Recommended – Dedicated Video Board with 1GB VRAM
- Screen Resolution: 1024 X 768 or higher (1280 x 800 or above highly recommended)
- Hard Disk: 40 GB of free space

Download

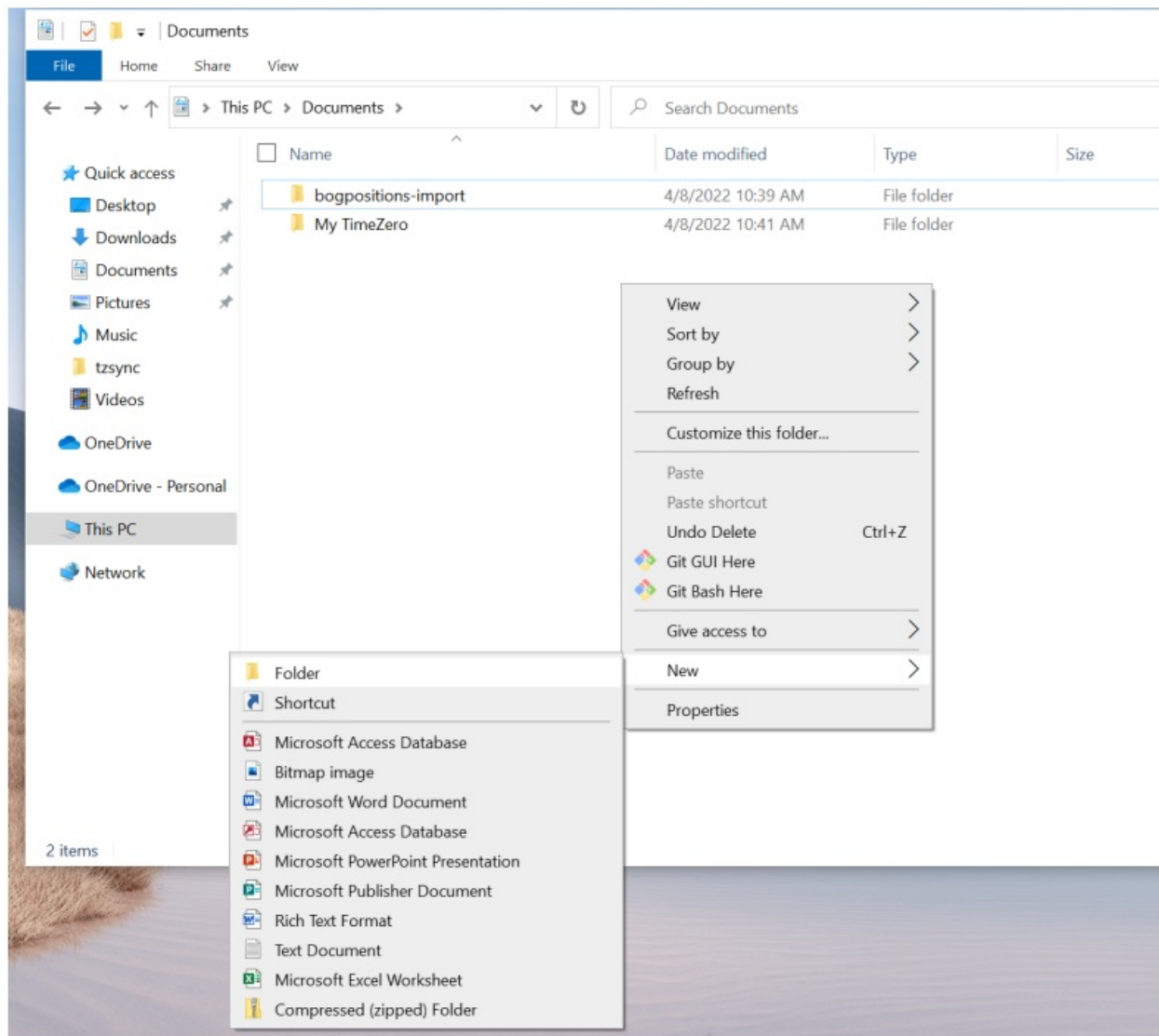
The Plotter Sync App installer can be downloaded from:

www.blueoceangear.com/resources > Then scroll down to 'Installer Download' and click on the download. Download this installer on the PC running TimeZero™. Note: this file is 50MB so if your PC is on satellite internet you may want to download over a lower-cost internet connection and transfer the file via USB stick. Once installed, the app is designed to use minimal bandwidth and should be usable over any satellite internet system. It will attempt to synchronize with the cloud once per minute. If your internet is available sporadically, the app will synchronize whenever it is available.

Create Data Sync Folder

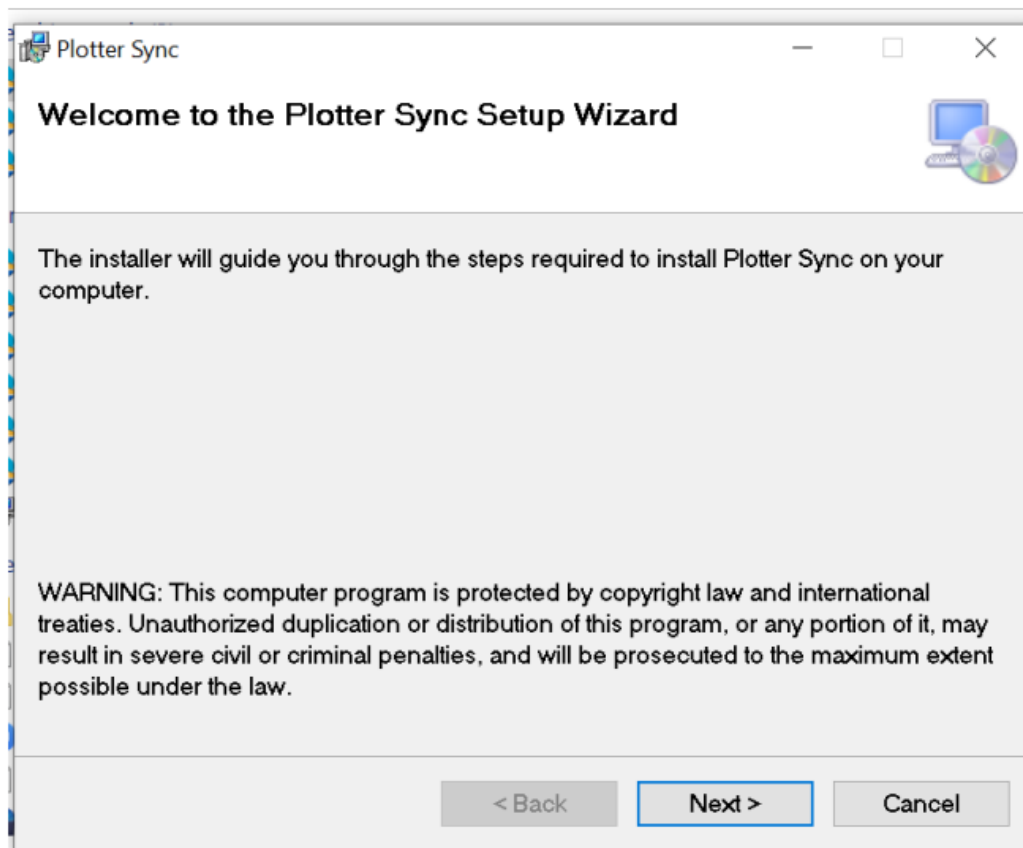
To synchronize the data between the Blue Ocean Gear cloud and TimeZero™, you must create an empty Windows folder on your PC. This can be anywhere; we recommend creating it in your Documents folder. We have called this folder bogpositions-import but you can call it anything; below we refer to this as the Data Sync

Folder. This folder should not be used for any other purpose.



Install

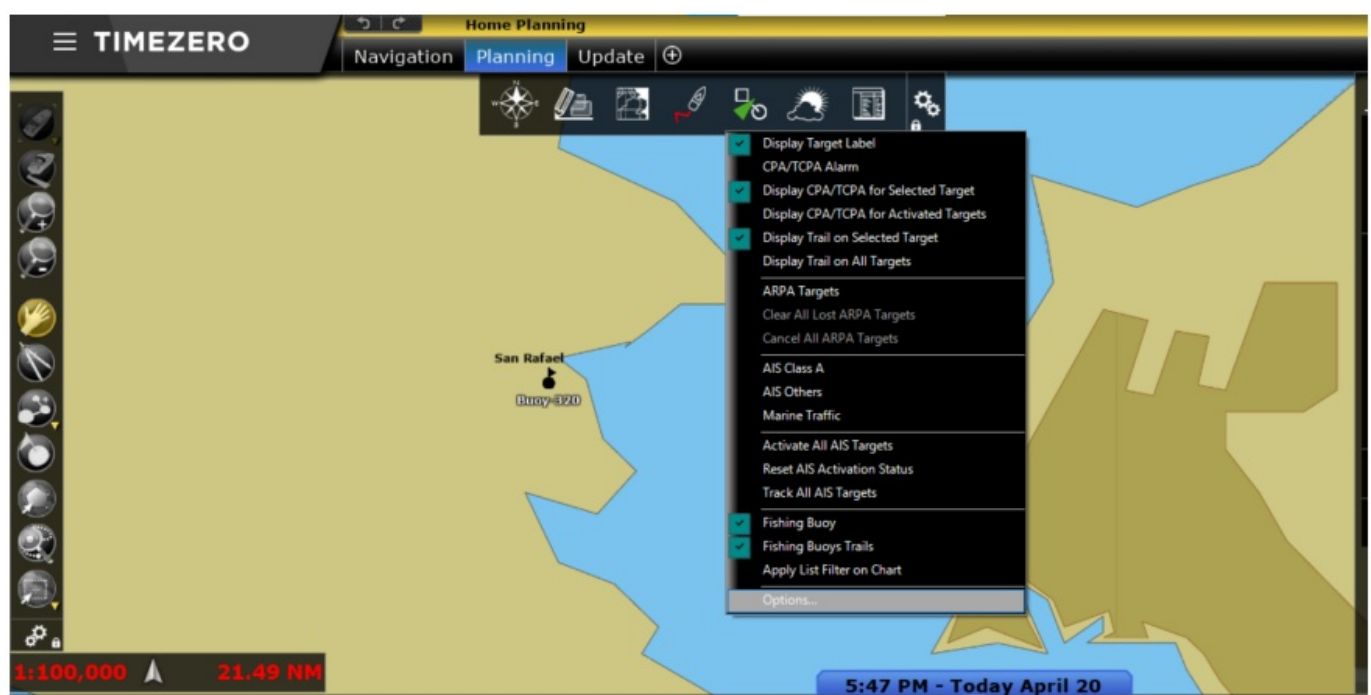
Double-click the installer file on your TimeZero™ PC to install the app. Click 'Next' to run through the installer process. The default options should not need to be changed. We recommend running as an administrator user, but this is not required. If this shows an error about Unknown or Untrusted Developers (depending on your version of Windows), click More Info and Allow / Install.



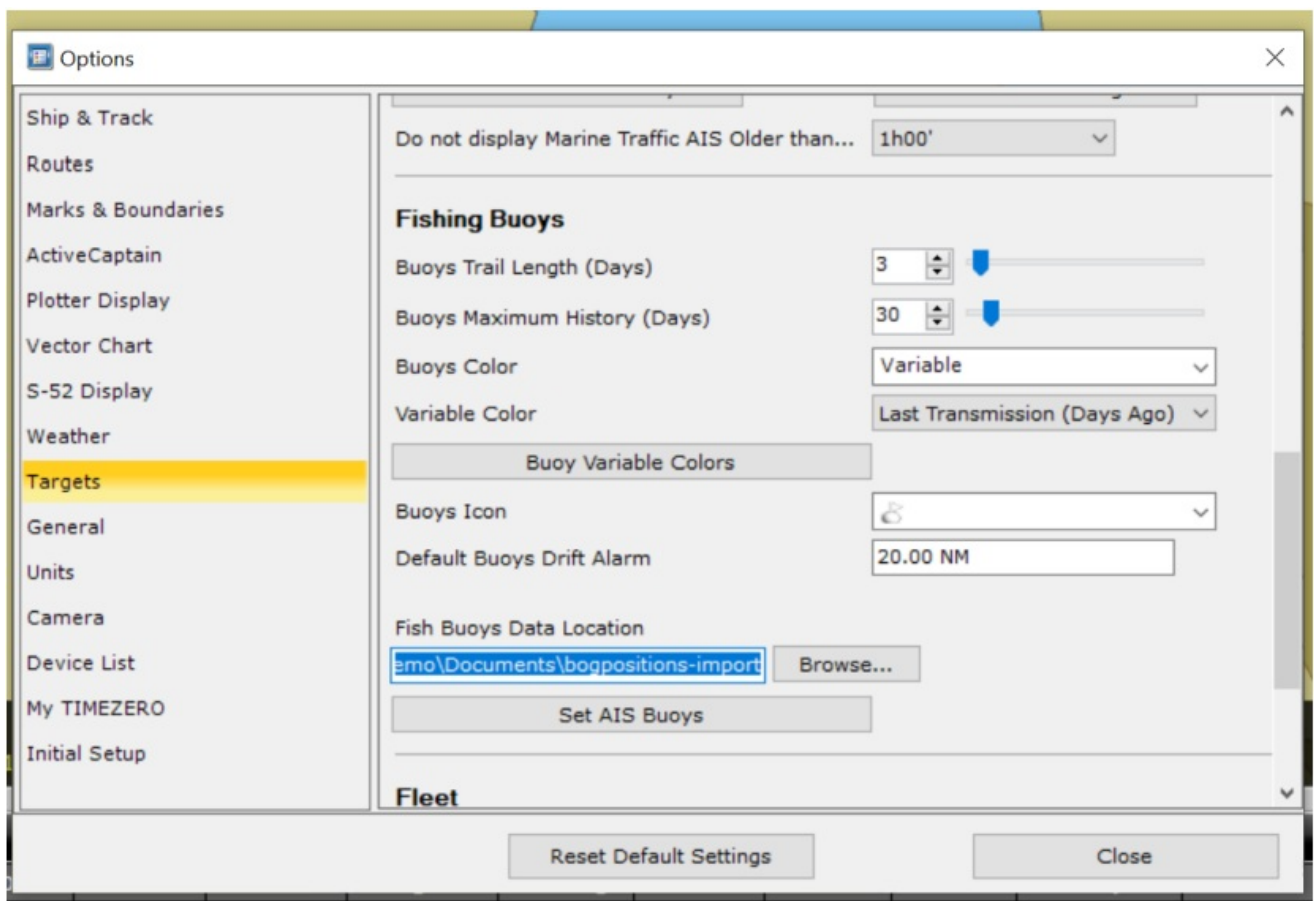
At the end of the installer, you should see the Blue Ocean Gear login screen. Leave this for now, we'll return to it later.

Configure TimeZeroTM

Open TimeZeroTM. In the top button bar, click Targets then Options.



- In the options menu, scroll down to Fish Buoys Data Location and enter the Data Sync Folder you created earlier.



Configure Firewall / Internet Access

Many onboard internet configurations allow only specific websites and apps to access the in-ternet. In this case, you or your network integrator must add these host names to the allowed list of sites:

- blueapi.boggroup.net
- bluevue.boggroup.net

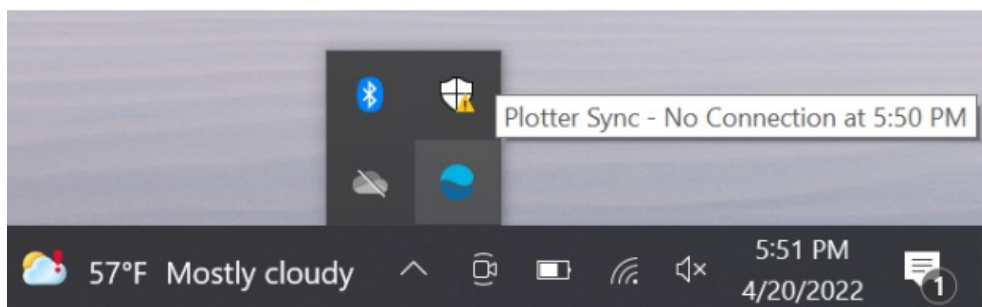
Internet device configurations vary; for details on how to add these sites to your device, please consult your network integrator or the device manufacturer. You can check if these sites were successfully added by visiting <https://bluevue.boggroup.net> in your browser. If you were able to access this website, then your firewall/internet settings are valid.

Open Plotter Sync App

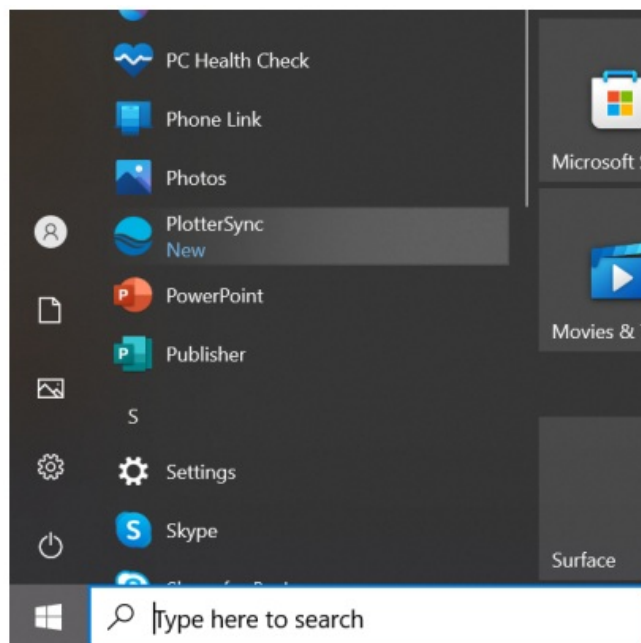
If the Blue Ocean Gear login screen is still running after the installer finished, switch to it now.



If the login screen is not running, find the Blue Ocean Gear icon in the System Tray (the list of icons in the bottom-right of your screen – you may have to expand this list with the arrow), right-click and select Open.



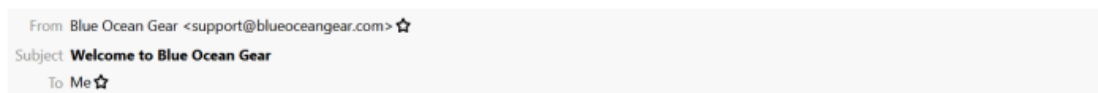
If the Blue Ocean Gear icon is not in the system tray, you can start the Plotter Sync app from the Start Menu.



Log Into Your Blue Ocean Gear Account

When your Blue Ocean Gear account was created, you received an email with the subject “Welcome to Blue Ocean Gear”. This email contains your username and a link to set your password.

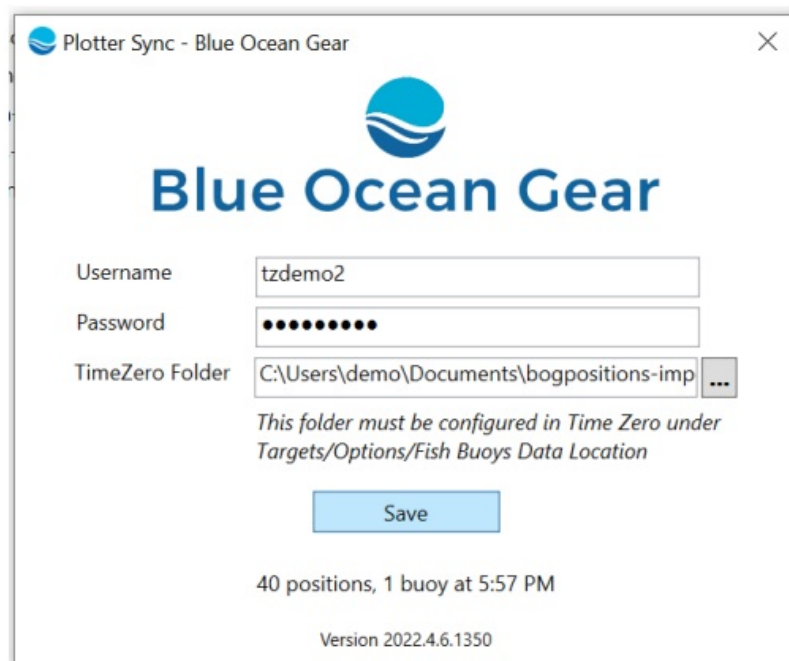
- **Note** – you must set your password before logging into the Plotter Sync app.



- Hello and welcome to Blue Ocean Gear.
- Your account has been created: your username is tzdemo
- Now please set your password. Then you can view your buoys' location on the Blue Ocean customer site.
- You can also download the for your iPhone.



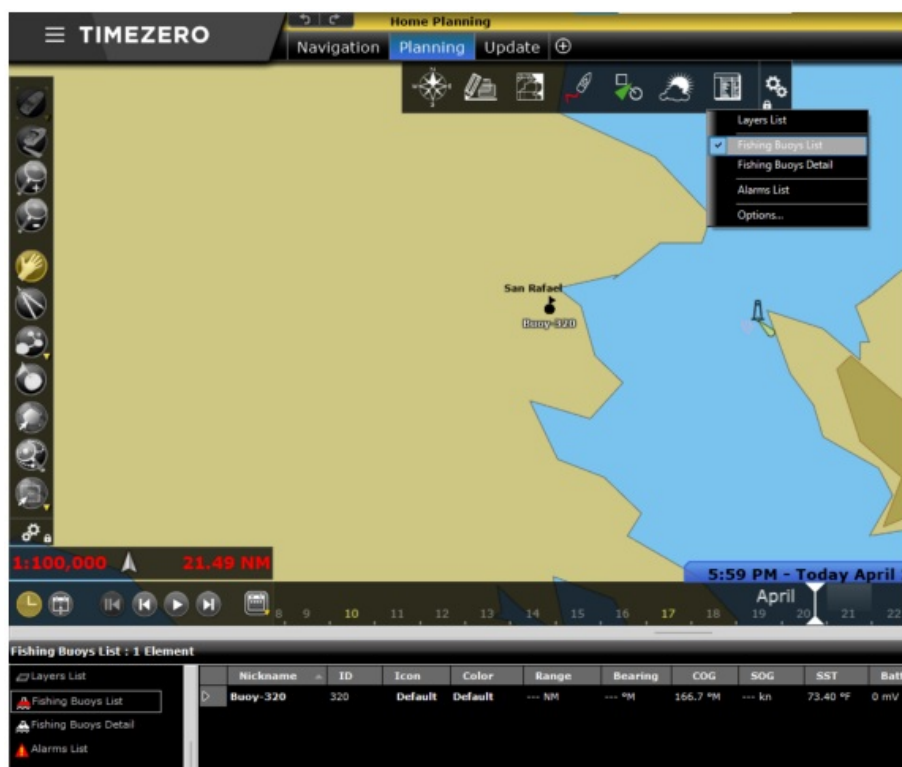
- Please don't hesitate to contact us at support@blueoceangear.com with any questions or comments!
 - From your friends at Blue Ocean Gear
- Enter your username & password into the login form. Under the TimeZero Folder, click the button and select the Data Sync Folder you created earlier. Click Save.



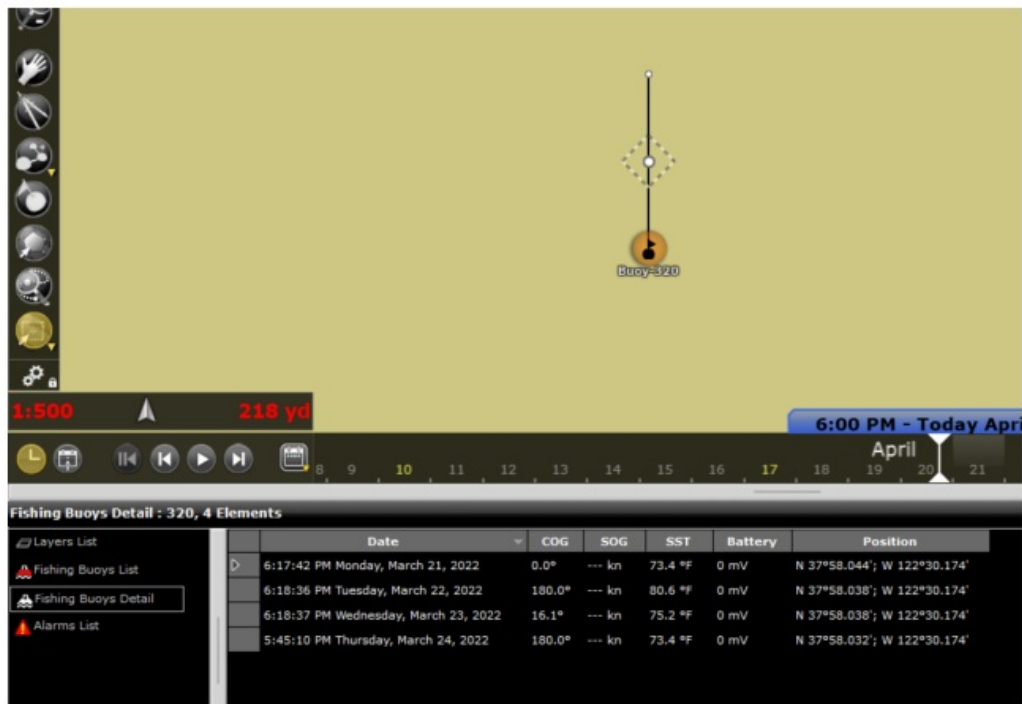
- Your buoy data will start importing into TimeZero™ automatically

Viewing Your Buoys in TimeZero™

You should see the list of your buoys in the Fishing Buoys List panel at the bottom of your TimeZero™ screen. If this panel is not showing, click Lists from the top menu and select Fishing Buoys List.

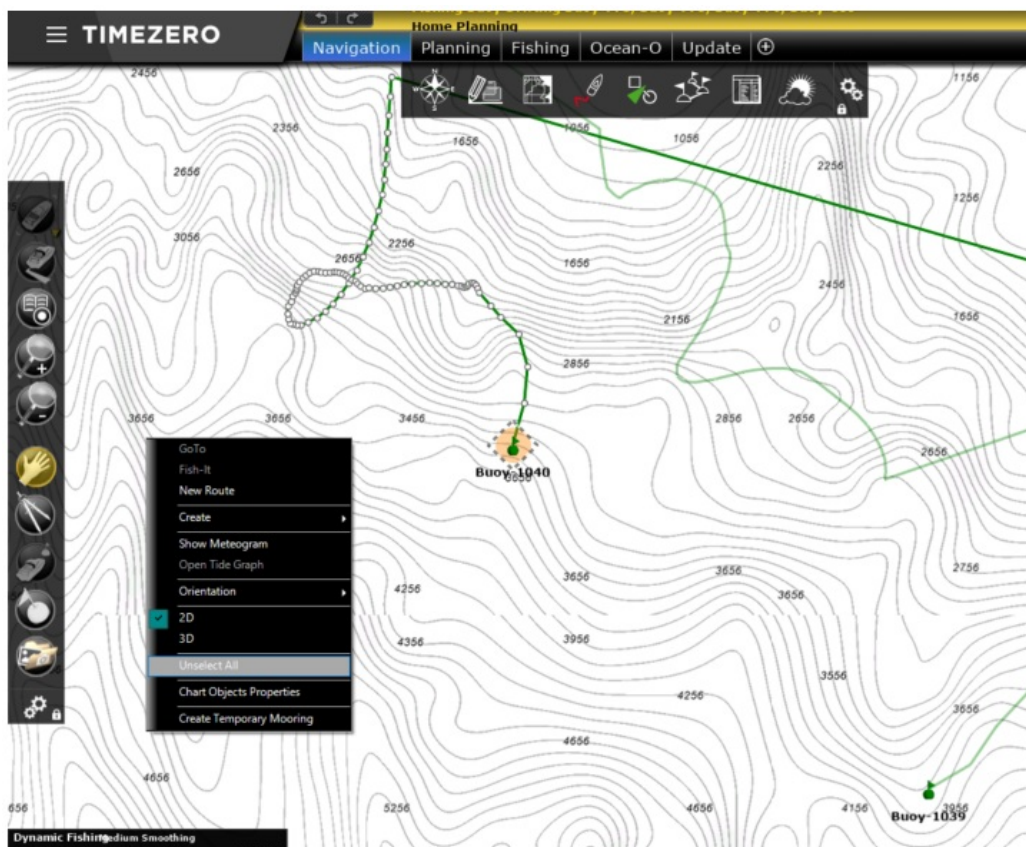


Double click the arrow on the left of a row in the Fishing Buoys List to select that buoy in the Fishing Buoys Detail panel. Here you can see the position history for the buoy. Double click an entry in this table to select it on the map.



Note: To hide the highlighted circle around the selected buoy and accompanying white circle buoy history positions:

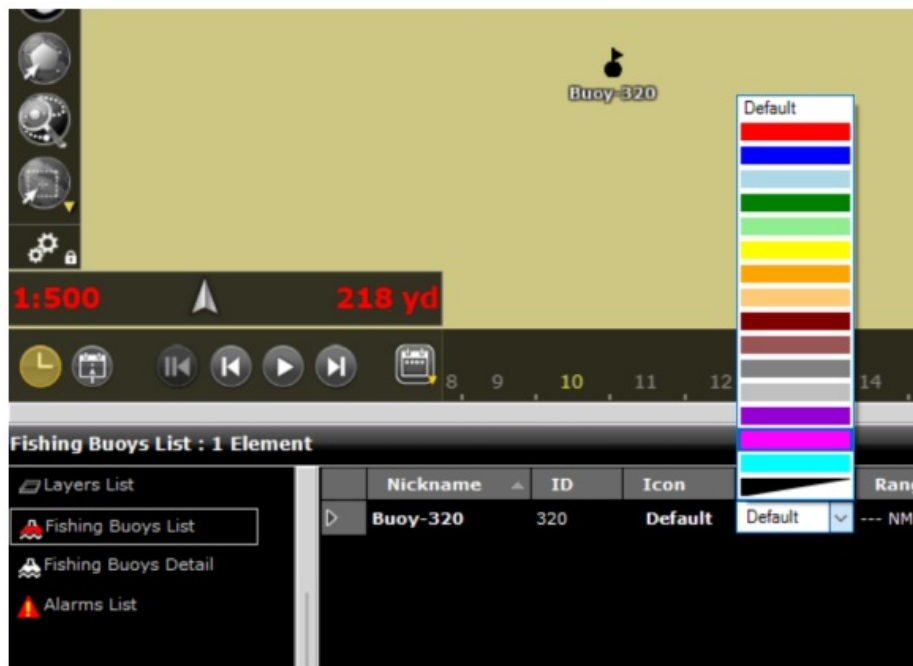
1. Right click anywhere on the map
2. Click on 'Unselect all'



Set Buoy Name and Color

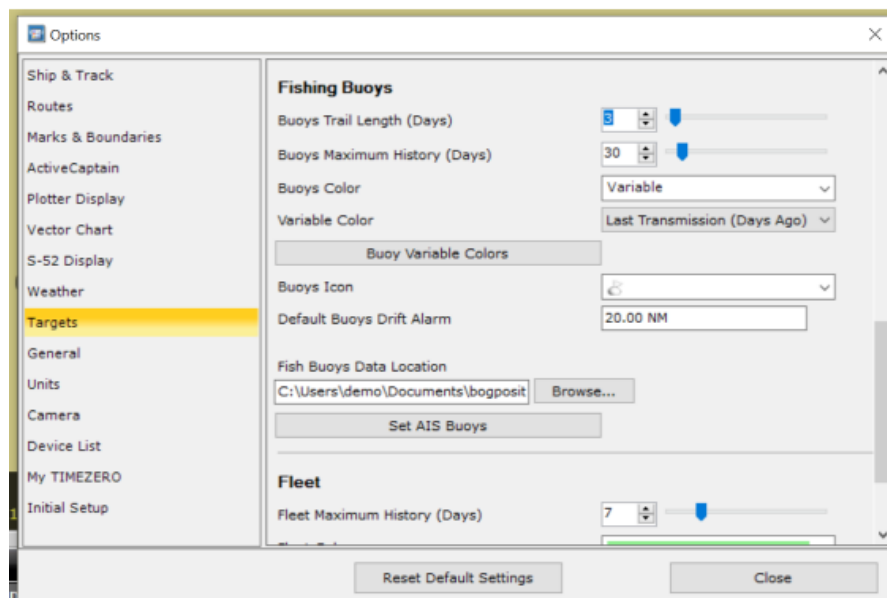
If you have many buoys in the water, it can be useful to distinguish them by giving them

a name or a color. Find the buoy in the Fishing Buoys List table; click its entry under Nicknameto set its name, and click the Color dropdown to pick a different color for that buoy's markers and lines.



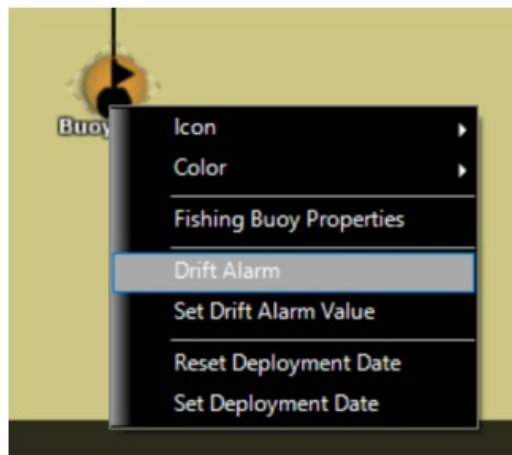
Set Data History

By default, TimeZeroTM will show all data history for your buoys. This may result in overlapping lines on the screen. You can set data history on the map under Targets → Options → Buoys Trail Length.



Drift Alarm

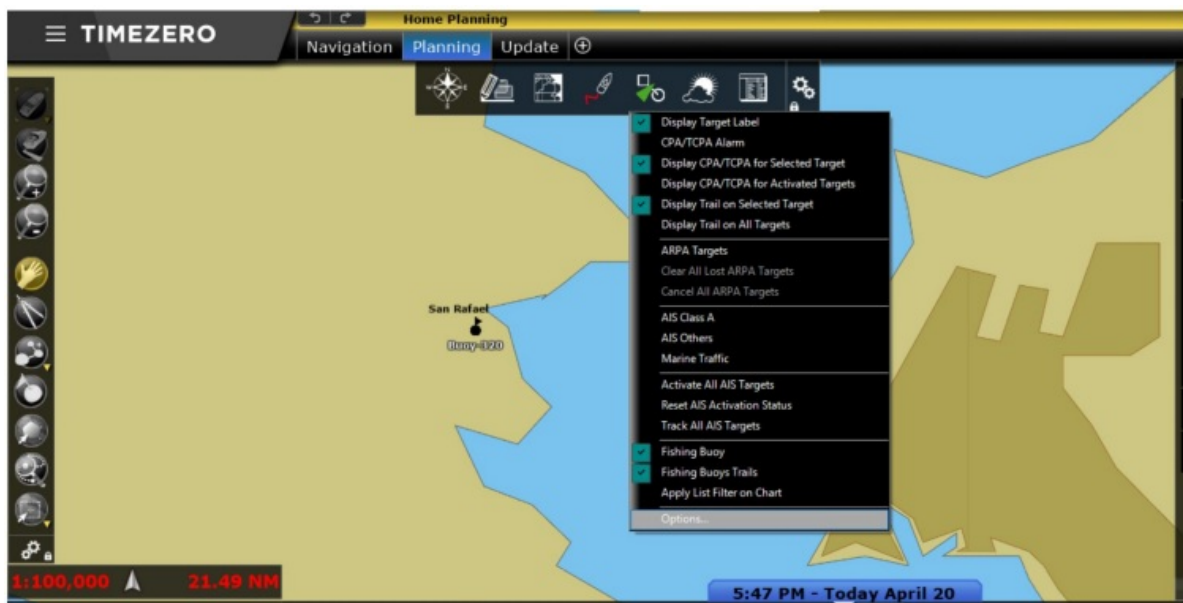
TimeZeroTM can notify you when buoys drift beyond a certain range. To set the range, right click on a buoy and select Set Drift Alarm Value. To activate the alarm, select Drift Alarm



Add differentiation from V0.4

Hiding Your Buoys and Buoy Trails

You can hide your buoys and buoy trails, or bring them back by going to Targets and selecting or deselecting Fishing Buoys or Fishing Buoy Trails.



Troubleshooting

If you can't see your buoys, first try the step above where it says to select Fishing Buoys under the Targets. If that doesn't work, try to increase the number of days you selected to show Buoy History (see one page up). If that doesn't work, contact us or your reseller.

Contacting Us

If you need any assistance configuring your buoys or the TimeZero™ sync, please don't hesitate to contact us at support@blueoceangear.com.

FAQs


Q: Can the PlotterLink system be used with any navigation plotter?

A: The PlotterLink system is designed to work with common navigation plotters. Ensure compatibility by coordinating with Blue Ocean Gear for customization.

Q: What is the power requirement for the PlotterLink system?

A: The system requires a 12Vdc power source with a maximum current of 2A for operation.

Documents / Resources

	Blue Ocean Gear PLOTTERLINK Software [pdf] Owner's Manual 2AZJC-PLOTTERLINK, 2AZJC PLOTTERLINK, PLOTTERLINK Software, PLOTTERLINK, Software
---	--

References

- [User Manual](#)

Blue Ocean Gear

2AZJC-PLOTTERLINK, 2AZJC PLOTTERLINK, Blue Ocean Gear, PLOTTERLINK, PLOTTERLINK Software, Software

Leave a comment

Your email address will not be published. Required fields are marked *

Comment *

Name

Email

Website

☐ Save my name, email, and website in this browser for the next time I comment.

Post Comment

Search:

e.g. whirlpool wrf535swhz

Search

[Manuals+](#) | [Upload](#) | [Deep Search](#) | [Privacy Policy](#) | [@manuals.plus](#) | [YouTube](#)

This website is an independent publication and is neither affiliated with nor endorsed by any of the trademark owners. The "Bluetooth®" word mark and logos are registered trademarks owned by Bluetooth SIG, Inc. The "Wi-Fi®" word mark and logos are registered trademarks owned by the Wi-Fi Alliance. Any use of these marks on this website does not imply any affiliation with or endorsement.