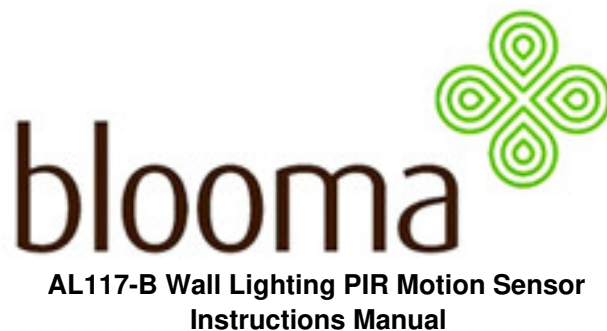




## **blooma AL117-B Wall Lightning PIR Motion Sensor Instructions**

[Home](#) » [blooma](#) » blooma AL117-B Wall Lightning PIR Motion Sensor Instructions



**IMPORTANT**

This Is a combined document. Please ensure that the Instruction manual and safety manual are spelled out and printed separately, including blank pages. PLEASE DO NOT PRINT THIS PAGE.

### **Safety**

- These instructions are for your safety. Please read through them thoroughly prior to installation and retain them for future reference.
- All fittings must be installed by a competent person in accordance with local regulations (IET wiring regulation BS7671). Check the pack and make sure you have all of the parts listed.
- Remove all packaging, wrap, etc from the product.
- The product must be securely fixed to the mounting surface using the screws and wall plugs supplied. The screws and wall plugs supplied are suitable for “masonry” only. Other fixings are not supplied and must be purchased.
- Take care not to drill into any pipes or mains cables beneath the surface during mounting holes preparation.
- **IMPORTANT:** The fixing point(s) selected must be capable of supporting the full weight of the light fitting.
- We recommend connecting this product to an external/wall switch in order to deactivate the motion detection

function if necessary.

- A wiring diagram is for reference only. Always refer to the terminal marking for wiring. Ensure that all electrical connections are tight and that no loose strands are left out of the terminal block.
- When the product does not light after installation:
  - > Ensure there is no electricity failure
  - > Ensure all the connections are secured
- If you have any doubt about the installation/use of this product, consult a qualified electrician.
- It is recommended to have a regular schedule of care and maintenance to keep the surface condition well.

## Contents [ [hide](#) ]

[1 Technical Data](#)

[2 Warranty Period and Conditions](#)






[3 Installation](#)

[4 Use](#)

[5 Documents / Resources](#)

[6 Related Posts](#)

## Technical Data

Supply Voltage:	220-240 V~, 50/60 Hz
Max. switching capacity:	1000 W for incandescent; 300 W for fluorescent; 150 W for LED
	This product complies with the conformity requirements of the applicable European Regulations or Directives.
	This product complies with the conformity requirements of the applicable UK Regulations.
	Splash-proof.
	Waste electrical products should not be disposed of with household waste. Please recycle where facilities exist. Check with your Local Authority or local store for recycling advice.
	This product is not suitable for dimming.
xxWyy	xx-year; yy-week of the year

## Warranty Period and Conditions

At Blooma, we devote special attention to selecting high-quality materials and use manufacturing techniques that enable us to create designer and durable product ranges.

That is why we offer a 2-year warranty against product manufacturing defects. This product is under warranty for 2 years as from the date of purchase, for normal, non-professional household use. The warranty shall only apply upon presentation of the till receipt or the invoice. Keep your proof of purchase in a safe place.

The warranty covers product breakdowns and malfunctions under the condition that the product is used in accordance with its intended use and subject to installation and maintenance in accordance with good practice and the information contained in the user's manual.

This product must be installed so that it may be later removed without damaging it.

This contractual warranty does not cover defects and damage caused by the natural wear of parts, bad weather, flooding, heat releases, freezing, damage caused by water quality (hardness, aggressiveness, corrosion, etc.), by the presence of foreign bodies transported by water or otherwise (sand, filings, etc.) or the lack of room ventilation, and damages that could be the consequence of improper use, misuse, negligence, accident or maintenance that is defective or does not comply with good practice or the information in the user's manual.

The following are also excluded from the warranty: harmful consequences due to the use of accessories and/or non-original equipment manufacturer or improper replacement parts, disassembly, or product modification.

The warranty is limited to those parts recognized as defective. Under no circumstances shall it cover fringe expenses (travel, labor) and direct and consequential damage.

Guarantee-related queries should be addressed to a store affiliated with the distributor you purchased the product from.

This guarantee is in addition to and does not affect your statutory rights.

**EU Manufacturer:**

Kingfisher International Products B.V.

Rapenburgerstraat 175E

1011 VM Amsterdam

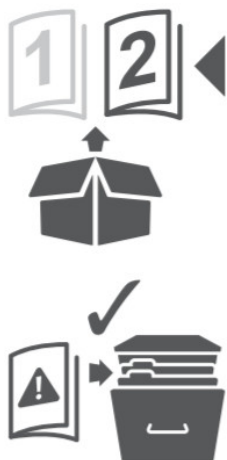
The Netherlands

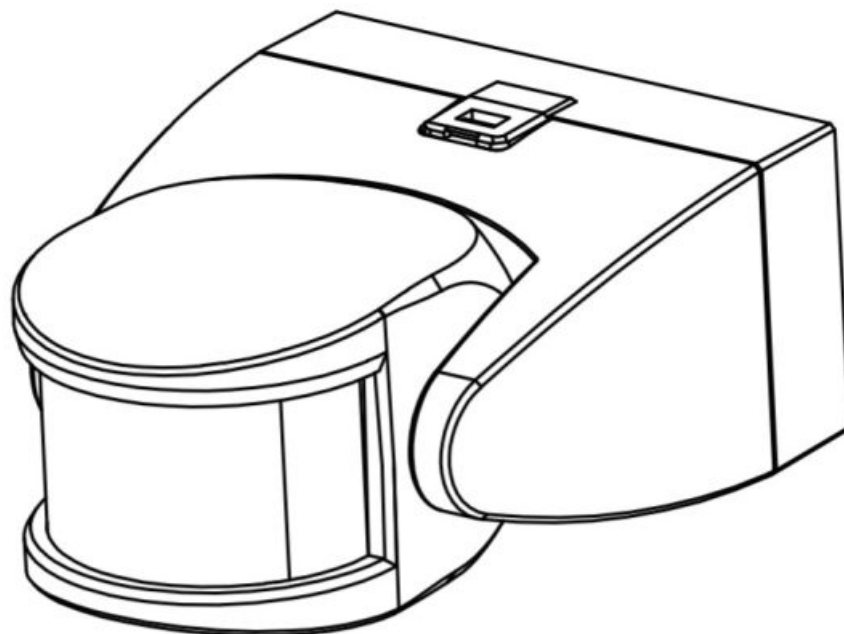
[www.kingfisher.com/products](http://www.kingfisher.com/products)

[www.diy.com](http://www.diy.com)

[www.screwfix.com](http://www.screwfix.com)

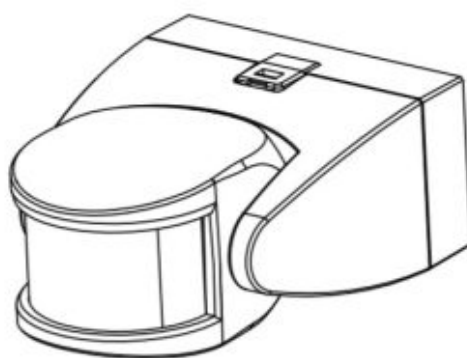
[www.screwfix.ie](http://www.screwfix.ie)





**IMPORTANT –**  
Please read carefully the separate safety guide before use.





[01] x 1

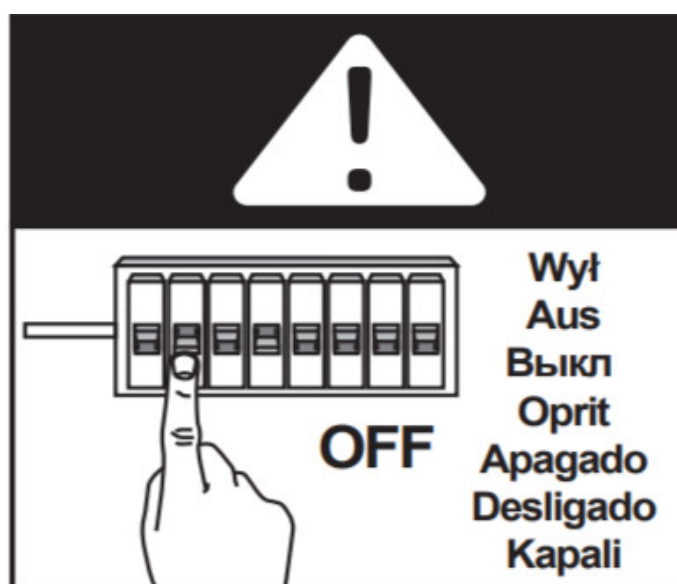


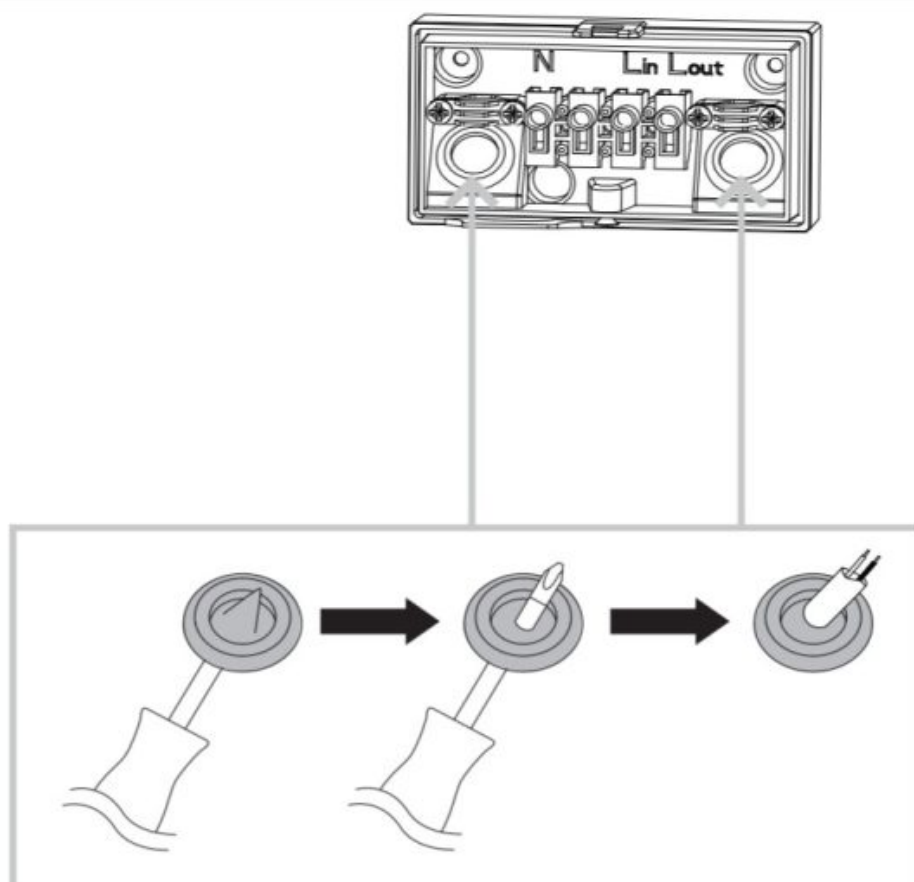
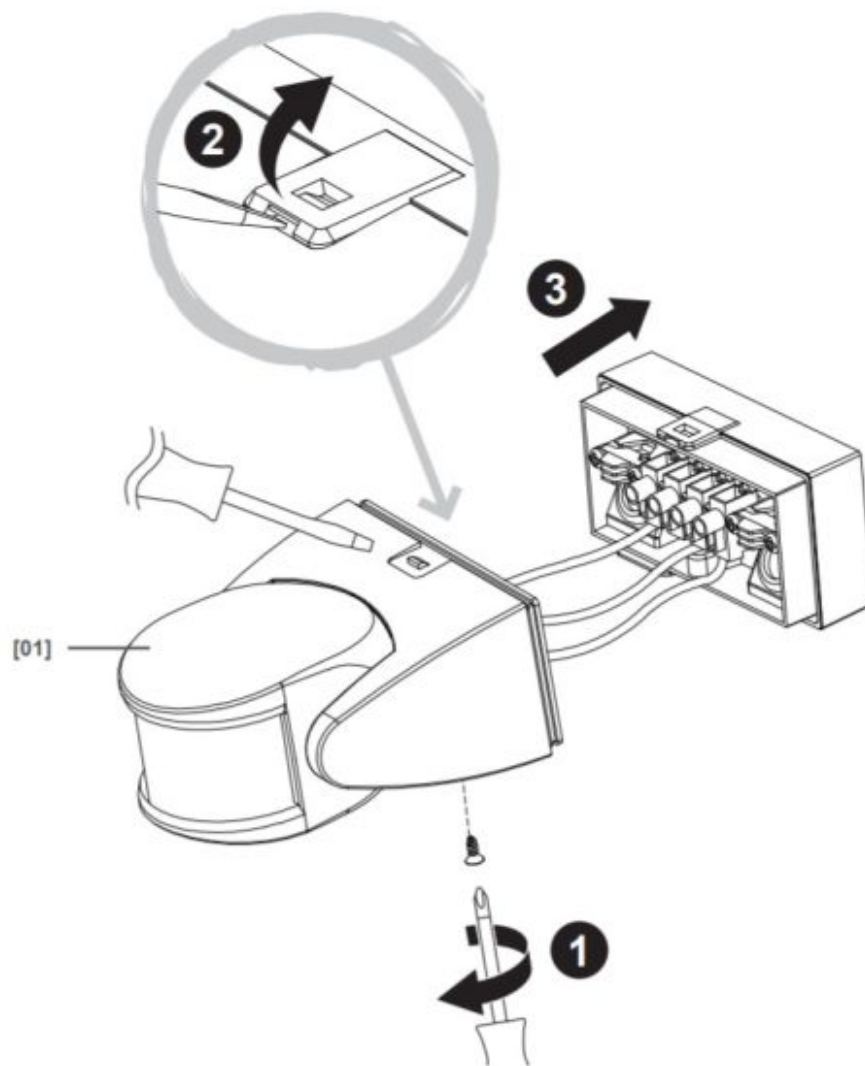
[A] x 2

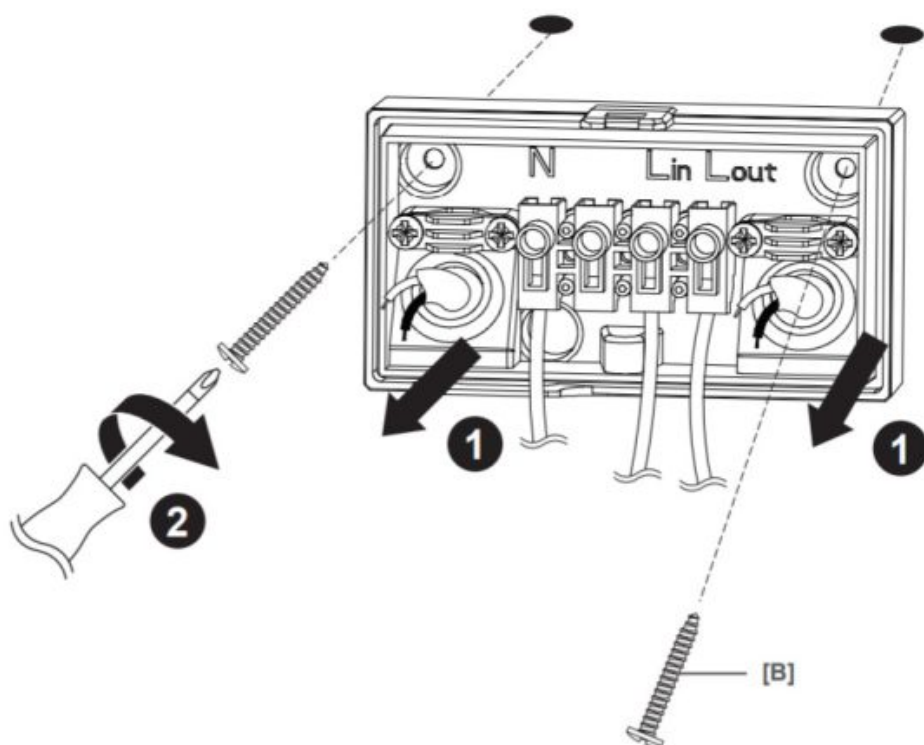
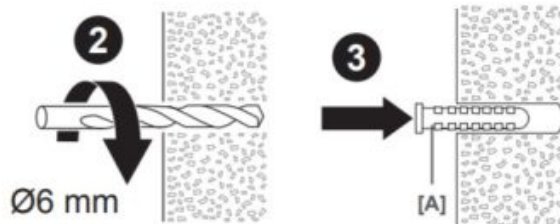
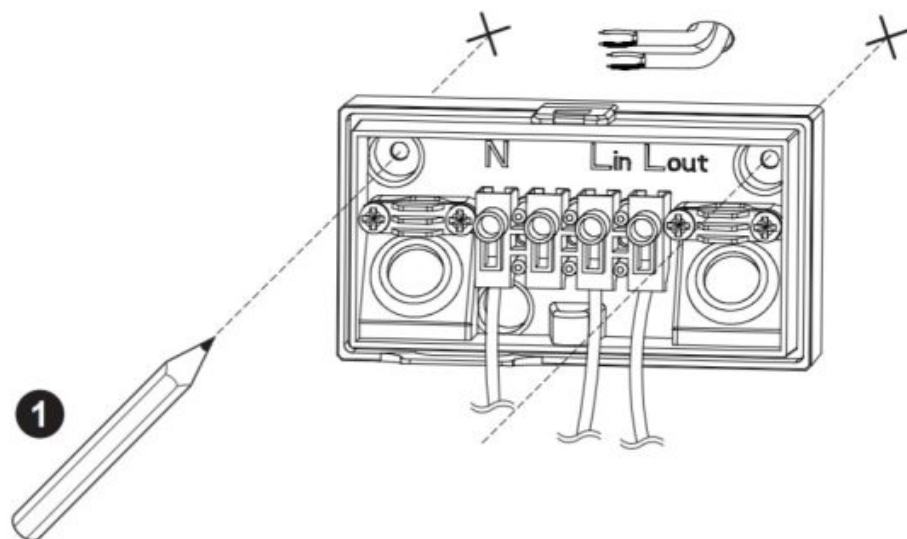


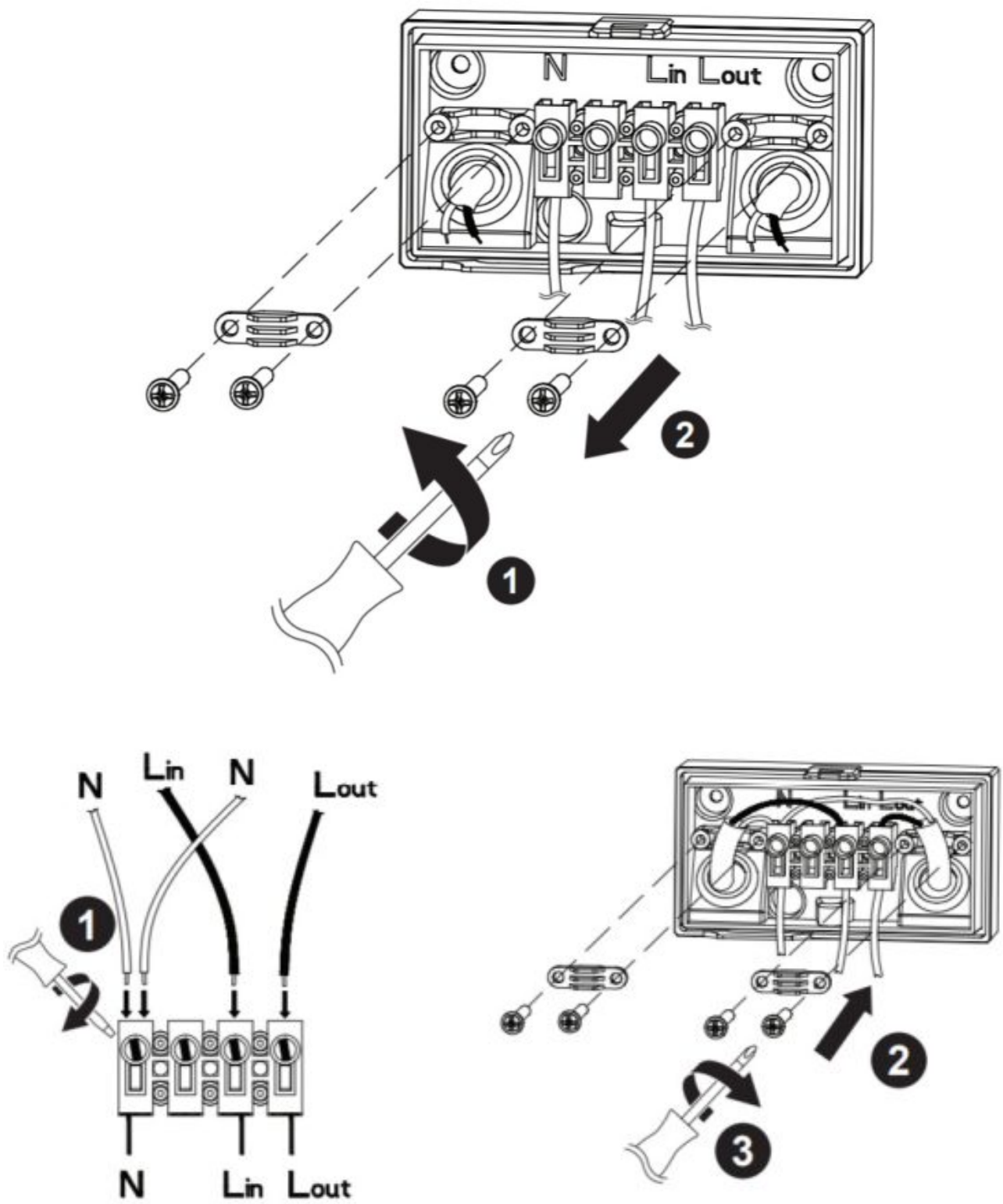
[B] x 2

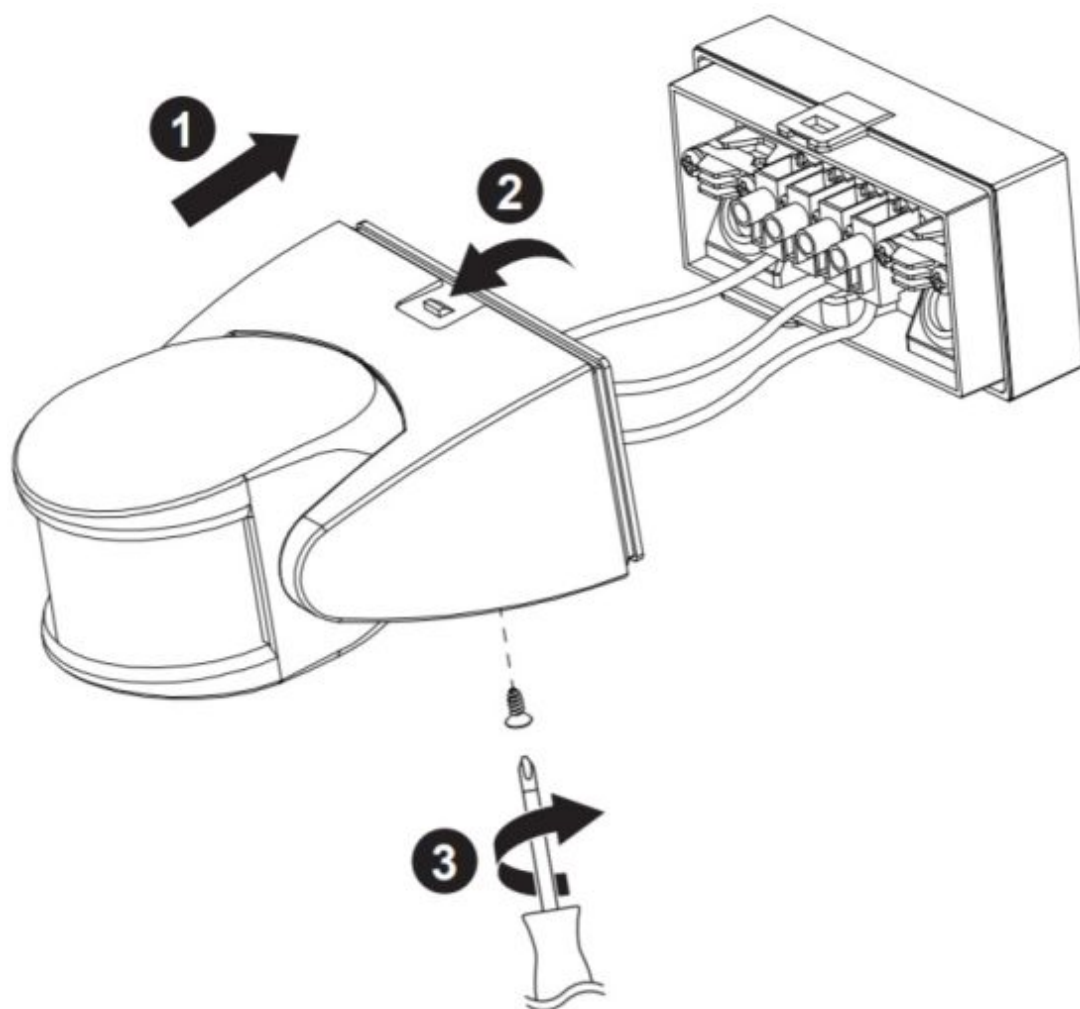
## Installation



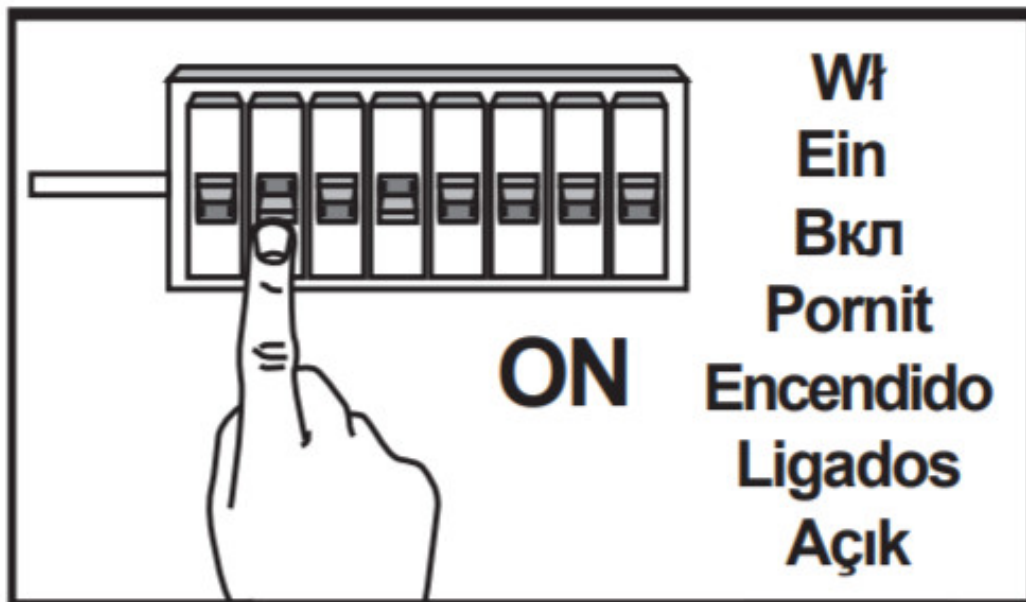
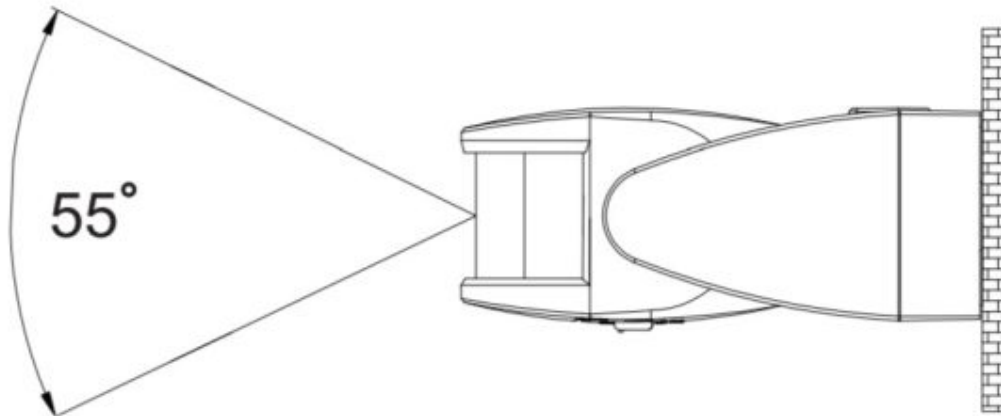
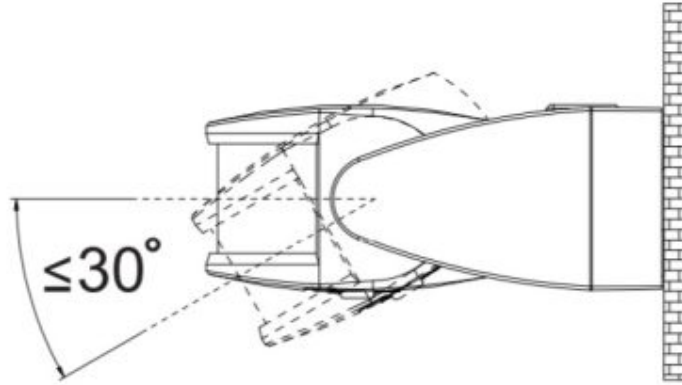






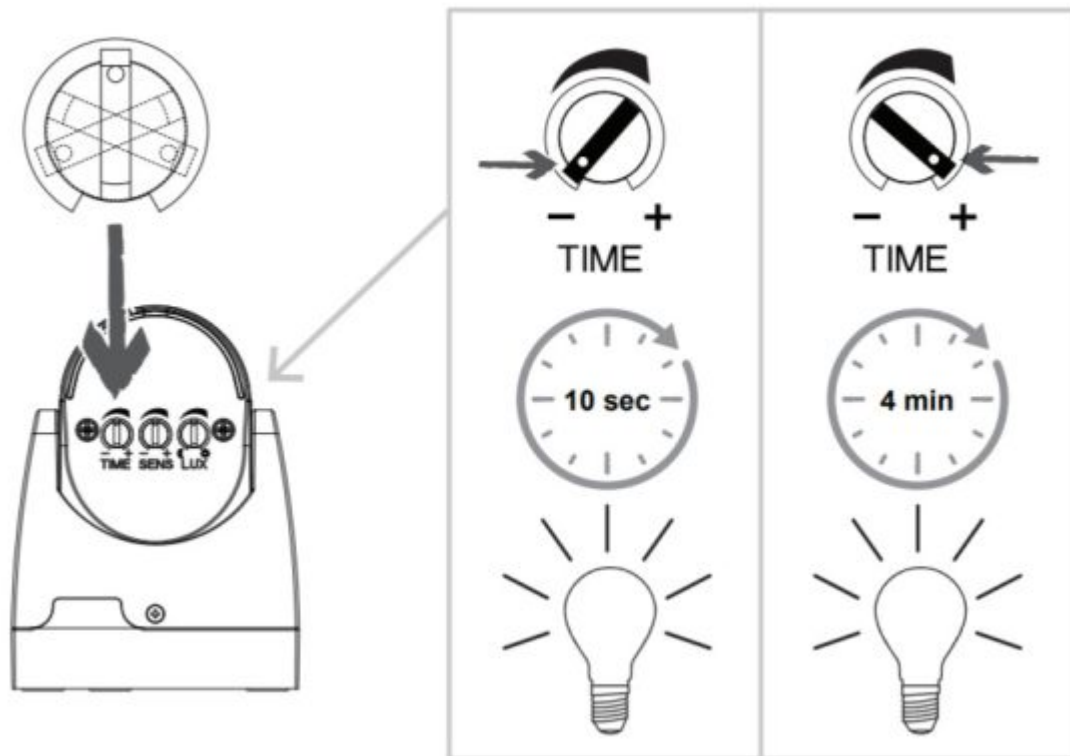


# IP44

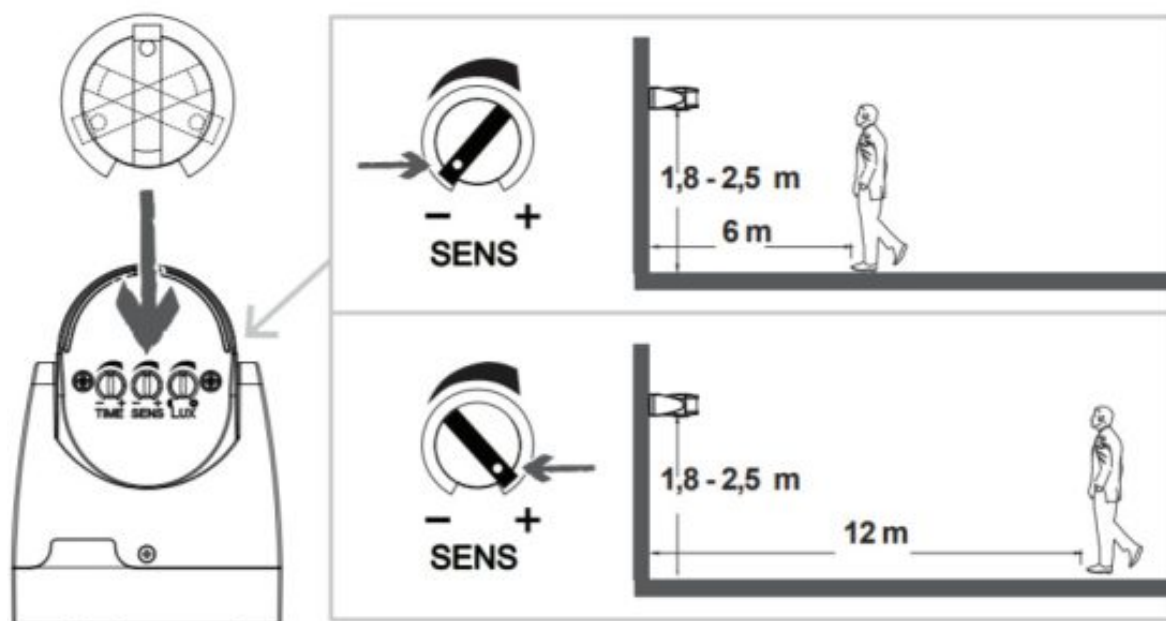


Use

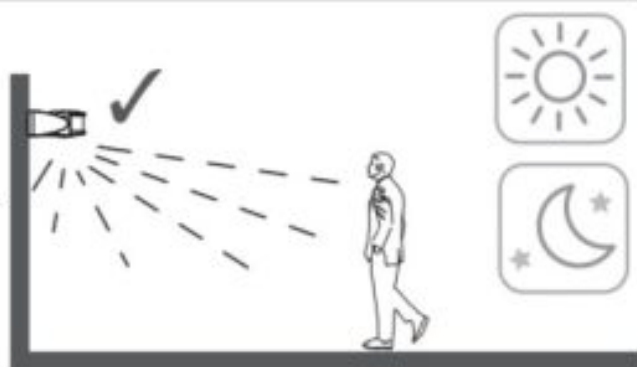
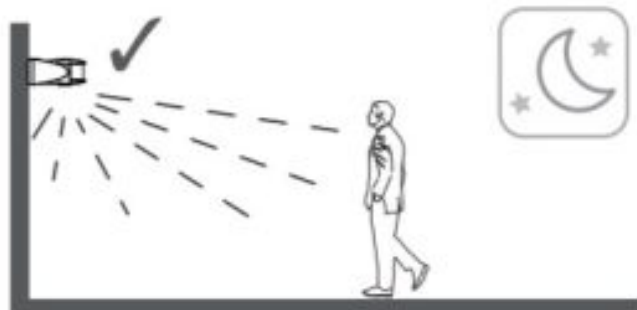
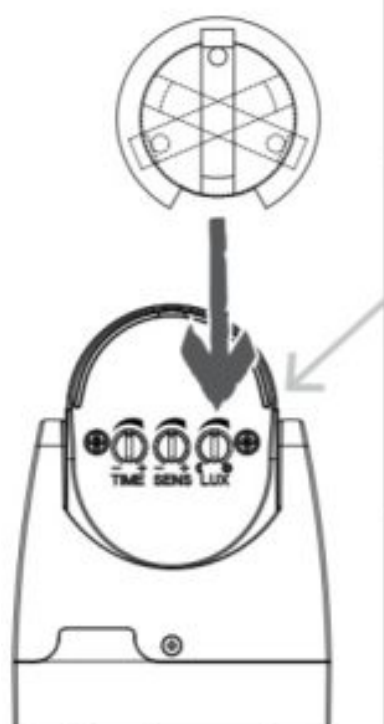
Timer

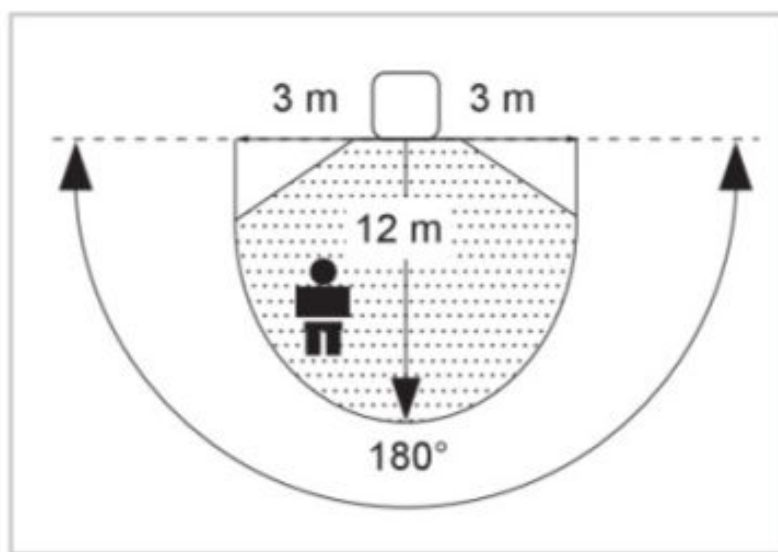
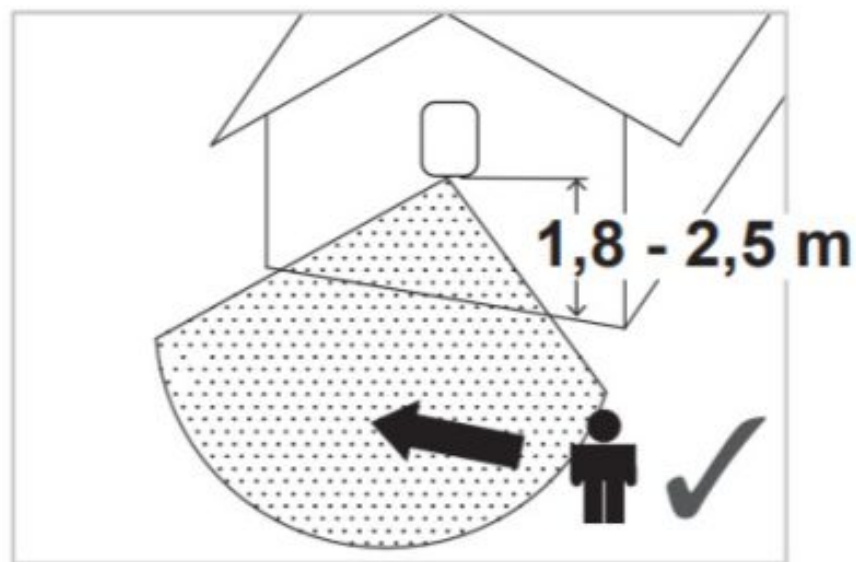


**Sensor**

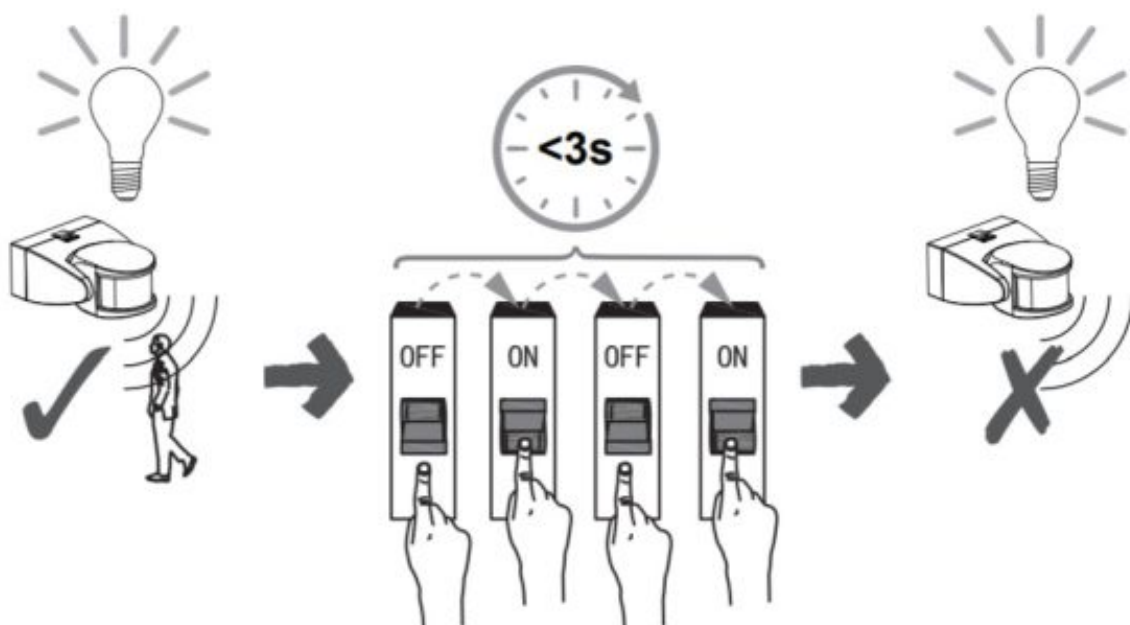


**Lux**



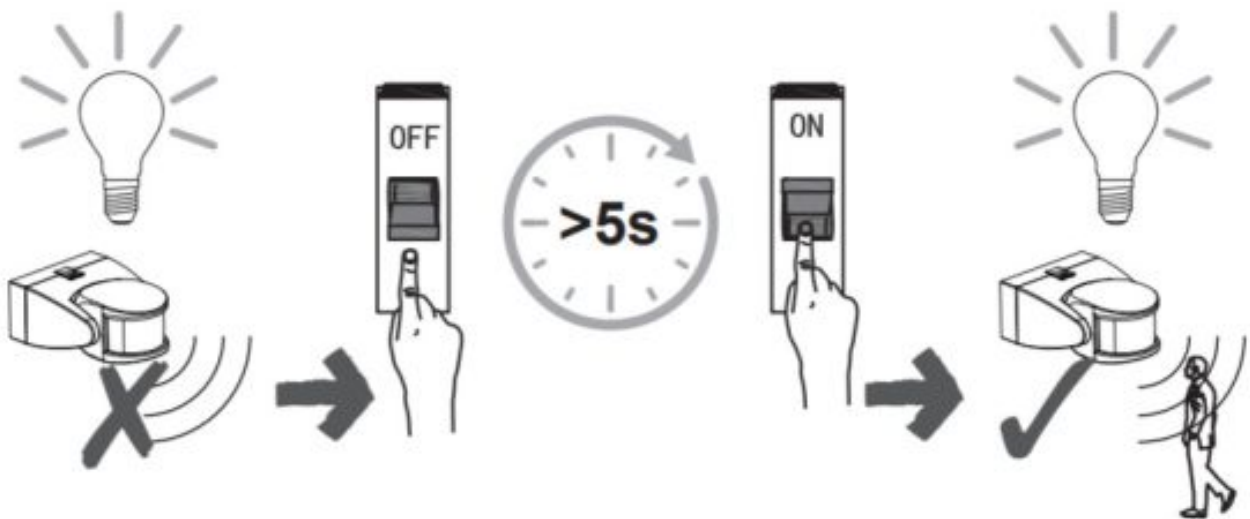


Activate sensor override mode



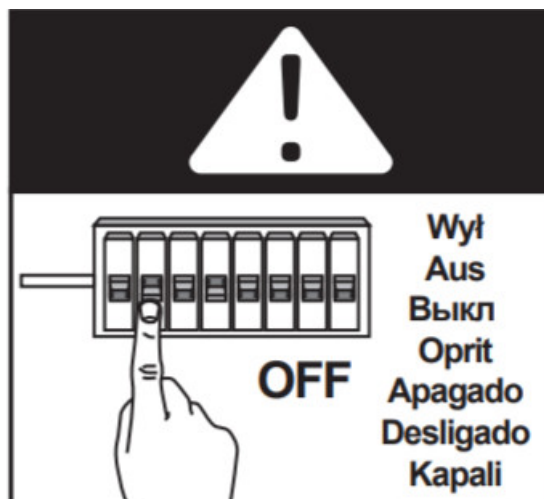
OFF/ON

De-activate sensor override mode



OFF / ON

Care






Manufacturer:  
 UK Manufacturer:  
 Kingfisher International Products Limited,  
 3 Sheldon Square, London, W2 6PX,  
**United Kingdom**  
 Kingfisher International Products B.V.,  
 Rapenburgerstraat 175E, 1011 VM Amsterdam,  
 The Netherlands  
**EU Manufacturer:**  
 Kingfisher International Products B.V.  
 Rapenburgerstraat 175E  
 1011 VM Amsterdam  
 The Netherlands  
[www.kingfisher.com/products](http://www.kingfisher.com/products)  
[www.diy.com](http://www.diy.com)  
[www.screwfix.com](http://www.screwfix.com)  
[www.screwfix.ie](http://www.screwfix.ie)

To view instruction manuals online, visit [www.kingfisher.com/products](http://www.kingfisher.com/products) Kingfisher International Products B.V.,

## Documents / Resources

	<p> <a href="#">blooma AL117-B Wall Lightning PIR Motion Sensor</a> [pdf] Instructions            AL117-B, AL117-W, AL117-B Wall Lightning PIR Motion Sensor, AL117-B, Wall Lightning PIR Motion Sensor         </p>
---	--