



BLITZWOLF BW-WS03 Multi-Function Wi-Fi Weather Station User Manual

[Home](#) » [Blitzwolf](#) » **BLITZWOLF BW-WS03 Multi-Function Wi-Fi Weather Station User Manual** 



User Manual BW-WS03

Contents

- [1 What's in the box](#)
- [2 To know the product](#)
- [3 How to use](#)
- [4 Documents / Resources](#)
- [5 Related Posts](#)

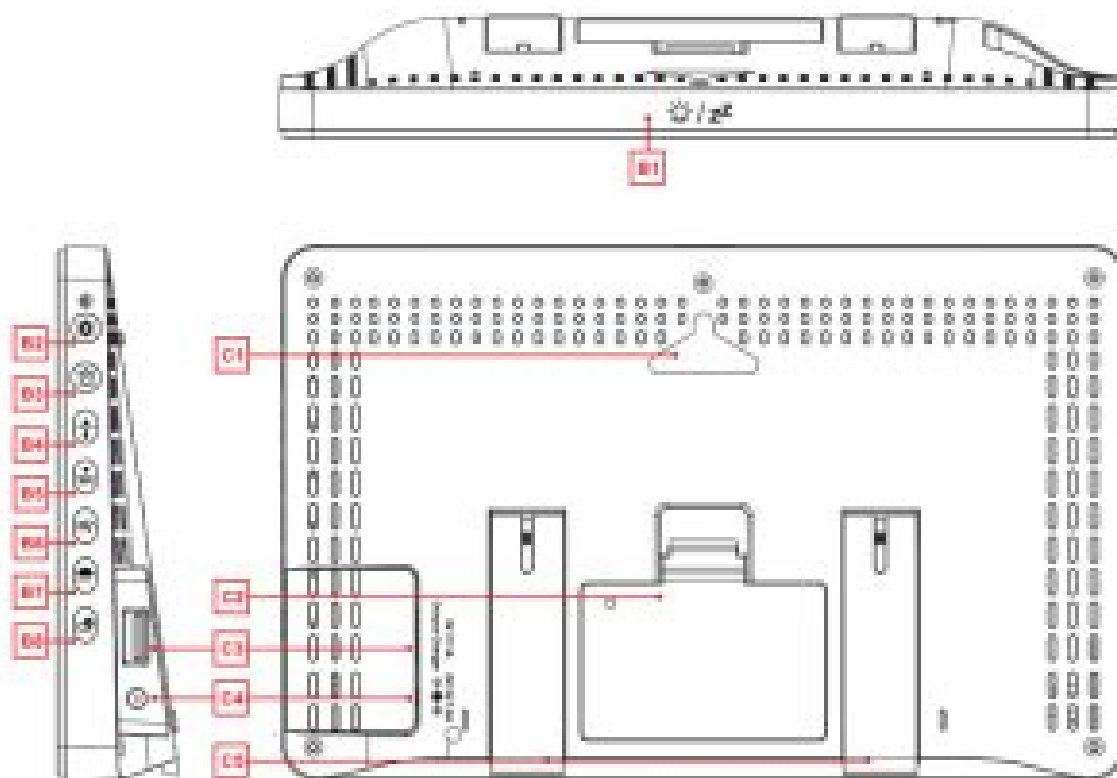
What's in the box

Indoor Weather Station*1
Outdoor Full Function Sensor*1
Screw Pack *1

To know the product

This product is a household weather station, non-professional special equipment, collecting weather data for reference only. If it may be damaged in bad weather, the damage caused by force majeure factors will not be guaranteed. Please pay attention to reasonable and safe use. It is suggested to take good safety protection measures before sudden weather and move the product components to a safe position in time.

1. Indoor Weather Station



B1: ☀ / ZZ Battery mode switch backlight, alarm mode into snooze, set mode exit Settings.

B2: ⚙ / ☀ Short press to adjust the brightness, long press to enter the setting mode, jump to the setting item.

B3: ⌚ Short press to view the alarm clock time, long press to enter the alarm clock setting mode.

B4: ▲ Short press to view temperature and humidity records, long press to switch air pressure/light display mode, adjust the value when setting/

B5: ▼ Short press to view temperature and humidity records, long press to switch air pressure/light display mode, adjust the value when setting.

B6: ⇄ Short press to view the wind speed record, long press to switch the wind speed and direction display mode.

B7: ☁ Short press to view the rainfall record, long press to switch the rainfall display mode.

B8: ↻ CH Short press to see the channel ID, long press to open or close the channel cycle.

C1: Hanging hole

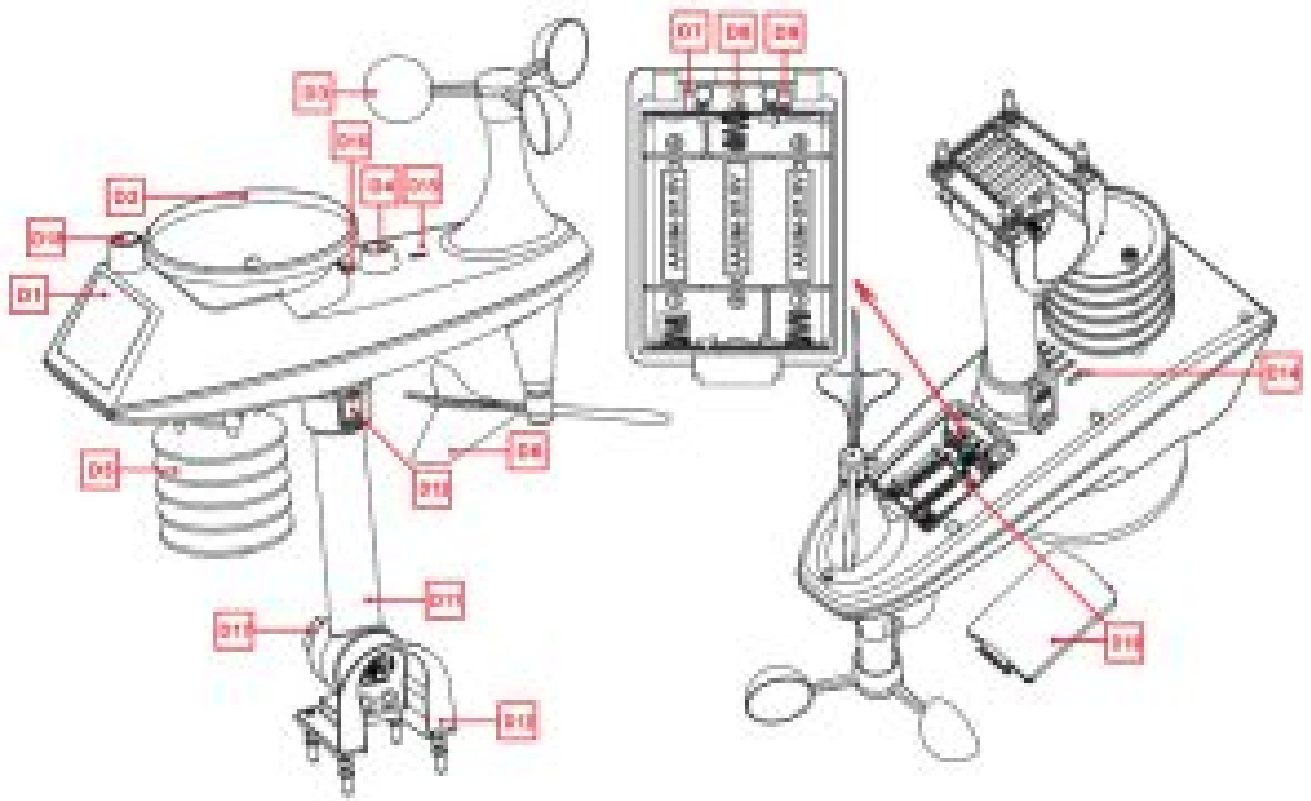
C2: Battery compartment

C3: USB charging socket

C4: Power supply socket

C5: Support frame

2. Outdoor Full Function Sensor



- D1: Solar panel
- D2: Rain funnel
- D3: Wind cups
- D4: Bubble level
- D5: Temperature | humidity induction box
- D6: Wind Directional Vane
- D7: Reset button
- D8: LED indicator
- D9: Manual transmit signal button
- D10; Battery compartment
- D11: Support rod
- D12: Fixed base
- D13: Socket head cap screws
- D14 Drain vents For rain sensor
- D15: North direction mark
- D16 Rain funnel rotation mark
- D17: Large nut for fixing the support rod and the base
- D18: Lighting and UV sensors

How to use

1. Setup Preparation

Items you will need to setup your station (not included):

- Crosshead screwdriver and hex driver for assembly.
- 5V1A power adapter
- Fresh Batteries:

AA*2 alkaline or lithium batteries for the weather station.

AA *3 alkaline or lithium batteries for the multi-combination sensor.

2. For Best Results:

- Remove weather station and sensors from the package and place together on a table or bench, within easy reach.
- Place batteries and screwdriver within reach of setup location.
- Keep sensors and weather station 0.15-0.3 meter or 5-10 feet for at least 15 minutes after installing batteries, to allow the sensors and station to connect repeatedly.

3. Quick Setup

1. Insert 3 AA batteries into the multi-combination wireless remote sensor.
2. Then plug the power cord into the weather station.
3. Download the corresponding APP (WeatherSense APP) on the mobile phone, open the APP, register the user and log in, and pair the weather station with the WIFI and server information according to the prompt of the APP.(Skip this step if your model doesn't have WiFi.)

 https://itunes.apple.com/cn/app/weathersense/id1273633929?mt=8	 https://play.google.com/store/apps/details?id=com.emax.weahter
--	--

4. Configure basic settings. Set time, date, unit, etc.
5. Insert 2 AA batteries into the weather station (when the power adapter is unexpectedly powered off, the settings will not be lost).
6. Move the remote sensor to outdoor or other location after 5 minutes.

4. Pairing with weather station device. (Skip this step if your model doesn't have WiFi.)

1. Login user account.
2. Make sure your phone is connected to a 2.4GHz Wi-Fi network.
3. Plug in weather station with AC/DC power, Press and hold "WiFi" button for 3 seconds until "WI-FI AP" blinking on the device display. If the device is first enabled, it will automatically enter AP mode, and "WI-FI AP" blinks on the display.
4. Please select "W003" for the connection method. After the new device search is completed, please find and select "WeatherTyp".
5. Select the correct Wi-Fi network SSID and Make sure Wi-Fi password you're inputting is correct.
6. Follow the in-app instructions to pair the weather station device:
When the notice of Device binding successful appears in the App. The weather station device will automatically exit AP mode. If not please press and hold "WiFi" button for 3 seconds to exit it.
7. Confirm the city of your current location:

Make sure your phone's location service are turned on and allowed for this App. Make sure that your current location city can be successfully located in the map. Some cities may fail to locate because there is no corresponding success in the app. You can manually move the location or be automatically positioned to a large administrative level city.

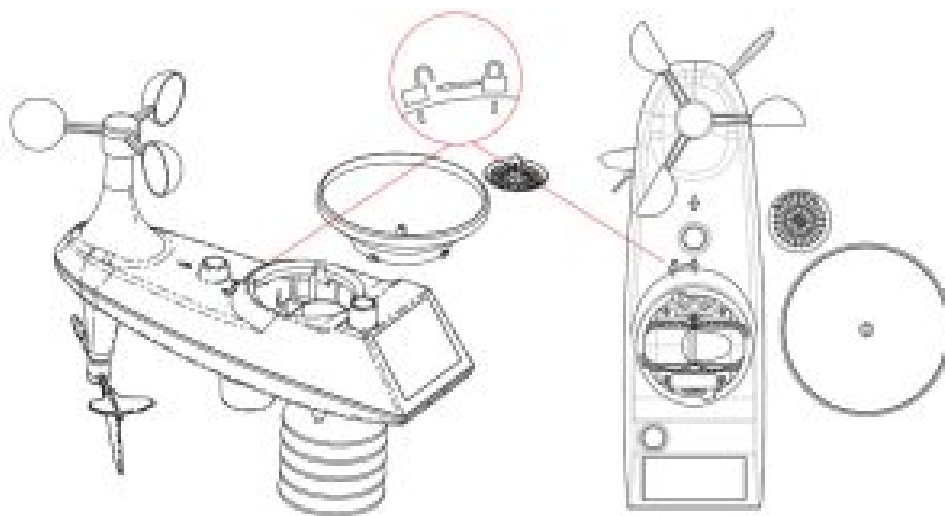
8. The device will connect to your home Wi-Fi network automatically in few minutes. Wi-Fi and signal symbol and All weather data will be displayed after Wi-Fi is successfully connected.

Note: after the power AC/DC adapter is disconnected, the WIFI connection of the device will be automatically disconnected.

5. Mounting Wireless Sensor

1. Mount in an open area clear for 15 meters (50 feet) in all directions.
2. The sensor needs to be mounted on a sturdy platform or bracket that is mounted 1.5 m (5 ft) above the ground.
3. The base of the sensor is screwed to the platform and the support frame. Tighten the large nut that secures the support rod to the base
4. When installing, adjust the sensor body so that the solar panel faces south, otherwise the wind direction will be wrong. Note the “N” North Embossed Mark on the top of the sensor (requires a compass for proofreading, and the “N” North Emboss mark is identical to the “N” of the compass).
5. When installing the sensor, use the top bubble level to ensure the sensor level, otherwise the accuracy of the rainfall reading will be affected.
6. After completing the above two steps, lock the two hexagon socket screws on the side of the sensor body.
7. When installing, the fixing screws of the wind cup and the wind direction cursor should be tightened and tightened.
8. The rainforest structure of the sensor needs to be cleaned regularly (recommended cycle 1-3 months, depending on the frequency of rain):

- Remove the rainwater funnel (turn the rain sensor funnel according to the direction of rotation shown).
- Gently remove debris or insects from the rain sensor.
- Remove debris from the rainwater funnel itself especially debris from the funnel drain.
- Remove the debris from the drain,
- Reinstall the rainwater bucket.



Note: Do not apply oil to the rain sensor.

Note: Make sure the wireless sensor is installed within 50 meters of the weather station (empty, unobstructed).

According to the thickness of the obstacle between the wireless sensor and the weather station, the distance should be shortened as much as possible (the distance after the wireless signal penetrates the obstacle will be shortened), otherwise the data transmission may be disturbed.

<div>EC</div> <div>REP</div>	SCHEUFER Technologies GmbH Address: Hertleinstrasse 37, 91052, Erlangen, Germany E-mail: Mark. Zhang@scheufer.com
<div>UK</div> <div>REP</div>	VISHTEC UK Co., Ltd Address: Unit G25 Waterfront Studios, 1DockRoad, London, E16 1AH E-mail: Vincent.feng@vish-tec.com



Documents / Resources

	BLITZWOIF BW-WS03 Multi-Function Wi-Fi Weather Station [pdf] User Manual BW-WS03, Multi-Function Wi-Fi Weather Station
---	---