



# BlITZWOIF BW-WS02 WiFi Smart Weather Station with App Control User Manual

[Home](#) » [Blitzwolf](#) » BlITZWOIF BW-WS02 WiFi Smart Weather Station with App Control User Manual 

## Contents

- [1 BlITZWOIF BW-WS02 WiFi Smart Weather Station with App Control](#)
- [2 What's in the box](#)
- [3 To know the product](#)
  - [3.1 Screen Display section](#)
  - [3.2 Commonly Used ICONS](#)
  - [3.3 The Button Part](#)
- [4 How to use](#)
- [5 Q&A](#)
- [6 Documents / Resources](#)
- [7 Related Posts](#)



**BlITZWOIF BW-WS02 WiFi Smart Weather Station with App Control**

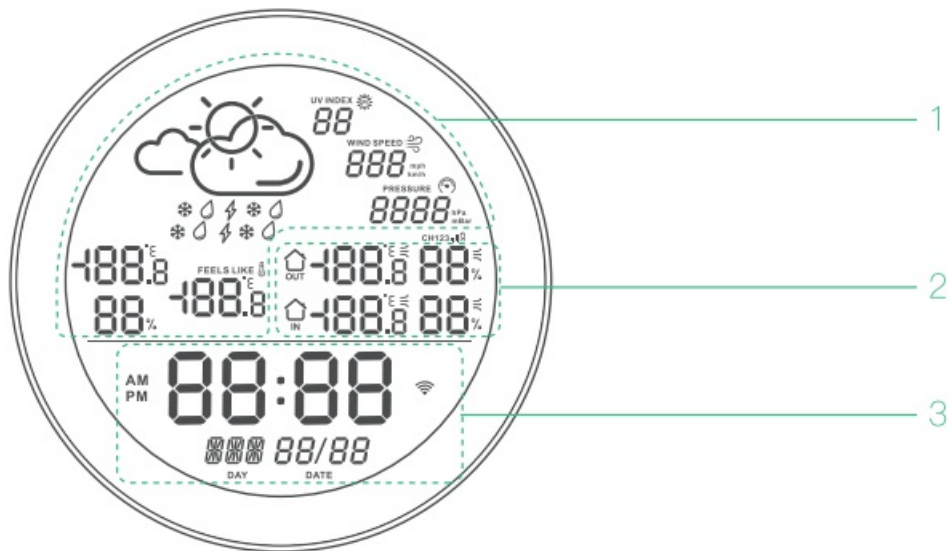


## What's in the box

BW-WS02 Indoor Weather Station\*1  
 BW-DS02 Outdoor Detect Sensork1  
 CR2477 Button Batteries\*1  
 Micro-USB\*1

## To know the product

### Screen Display section



### 1. Internet weather display

This function needs to automatically obtain the published data of the meteorological station on the Internet according to the positioning of the APP after connecting to WIH. If the data is obtained successfully, it will be dynamically updated. If there is no display/update, please check the network status. Content includes UV index, Wind speed, Air pressure, Sensible temperature, temperature and humidity. Weather forecast: sunny, cloudy, rain, snow, thunderstorm, partly cloudy.

### 2. Real-time outdoor temperature and humidity display

The data collected by the built-in sensor and outdoor detection sensor are displayed in real-time. Display data collected by indoor weather Stations and predict trends.



### 3. Time and date display

This function needs to automatically obtain the time and date data according to APP positioning after connecting to WIFI. If the data is successfully obtained, it will be dynamically updated. If there is no display/update, please check the network status.

Contents include: hours/minutes, weeks, months/days.

### Commonly Used ICONS



Low Battery warning icon.



Temperature and humidity trends icon.

CH123

Channel icon.

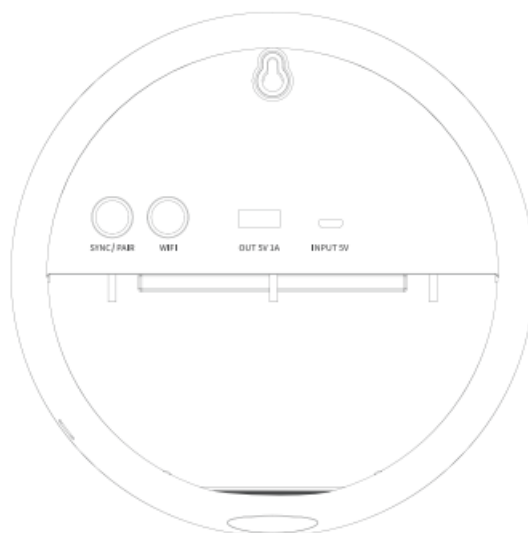


Communication signal icon.



WIFI icon: After successful networking, it is always on. In the flashing state, it is in paired connection; when it is not on, it is disconnected (please check the network).

## The Button Part



**SYNC/PAIR:** Press to synchronize the data from the auxiliary machine Press and hold to reset the pairing mode of the auxiliary machine.

**WIFI:** Long press to reset the network pairing state.

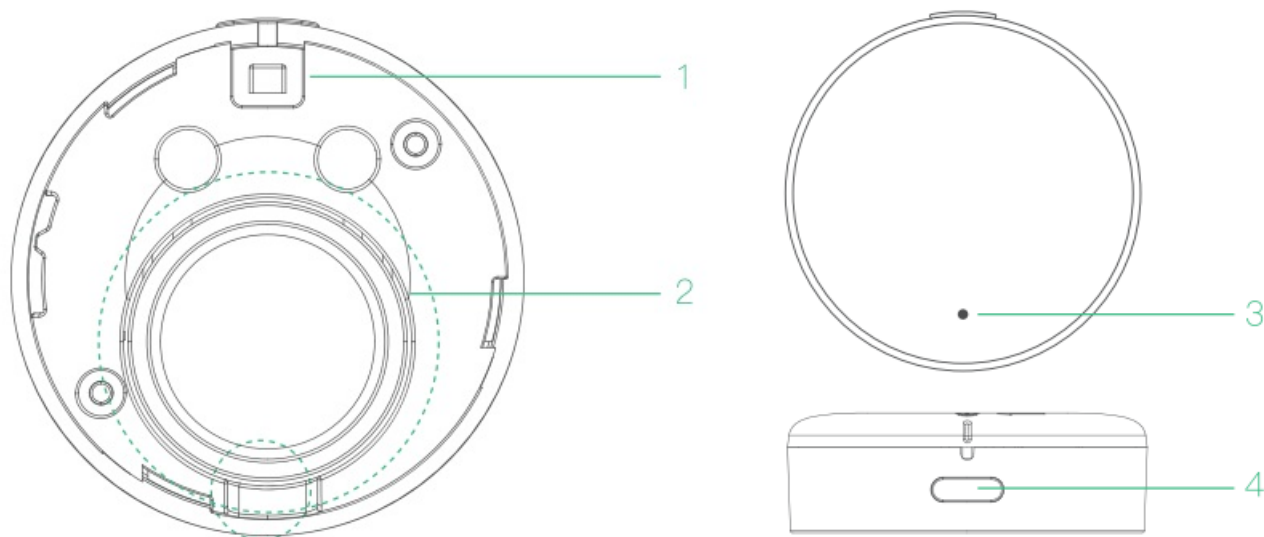
**OUT 5V 1A:** Output charging

**INPUT:** External power supply for equipment (it is recommended to INPUT above 5V2A)



Touch once, adjust the brightness of the light, and continuous touch will turn on/off the backlight.

## Detect Sensor



1. Hanging hole: insert a strap through the hole For portability.

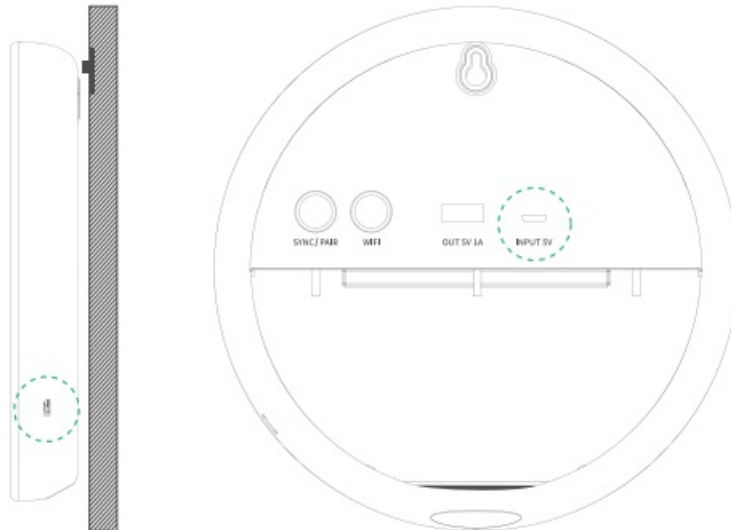
2. Battery compartment: for CR2477.

3. LED indicator: Data transmission when flickering.

4. Top Button: Press to transmit data; Press and hold to synchronize with the main machine.

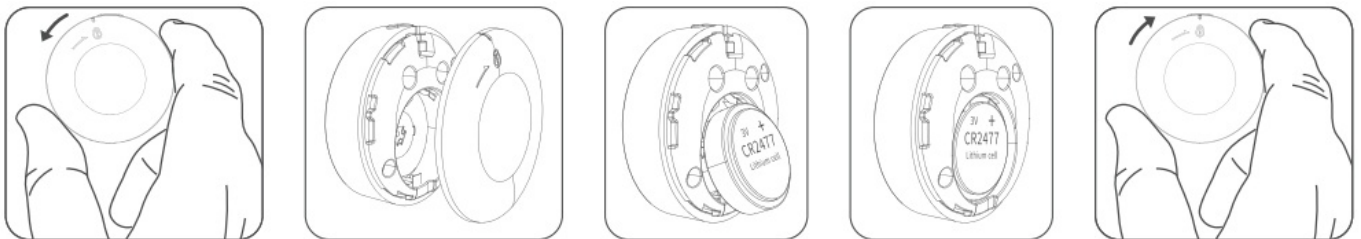
## How to use

### Plug-in power/install battery



Insert the Micro-USB power cord at the side/rear or the product by selecting the appropriate interface, and then externally Connect the appropriate power adapter (it is recommended to buy more than 5V2A).

### Detect Sensor



1. Twist the battery cover counterclockwise to unlock.
2. Place the button battery.
3. Twist the battery cover clockwise to lock.

### Paired detection sensors for indoor weather stations

Once the battery is installed into the main machine, the icon “CH123 will flash, indicating the main machine is in synchronization mode; press and holds the button on the auxiliary machine to synchronize With the main machine.

You will hear a buzz after the Successful connection. If you have only one auxiliary machine, you can press “SYNC/PAIR to complete the synchronization mode, the screen will display the current channel of the auxiliary machine. If you have three auxiliary machines, repeat the above steps to synchronize with the other auxiliary machines channel 2 and channel 3.

During synchronization, press the button on the paired auxiliary machine, and the main machine will display its icons and status and the buzzer will sound for 3 times.

During synchronization, press the “SYNC/PAIR button on the main machine to disable the synchronization mode and the buzzer will sound 2 times.

Press and hold the SYNC/PAIR button to clear the data on all the auxiliary machines, and the buzzer will Sound 3 times.

### Connect to the pairing APP

2.4ghz WIFI is required to connect the paired WIFI, and the password is entered correctly without special characters at the same time. The wifi signal strength is high, and it is recommended to connect the paired WIFI. The distance between the mobile phone and the WIFI IS Close, and 5GHz WIFI does not support connection to this product.

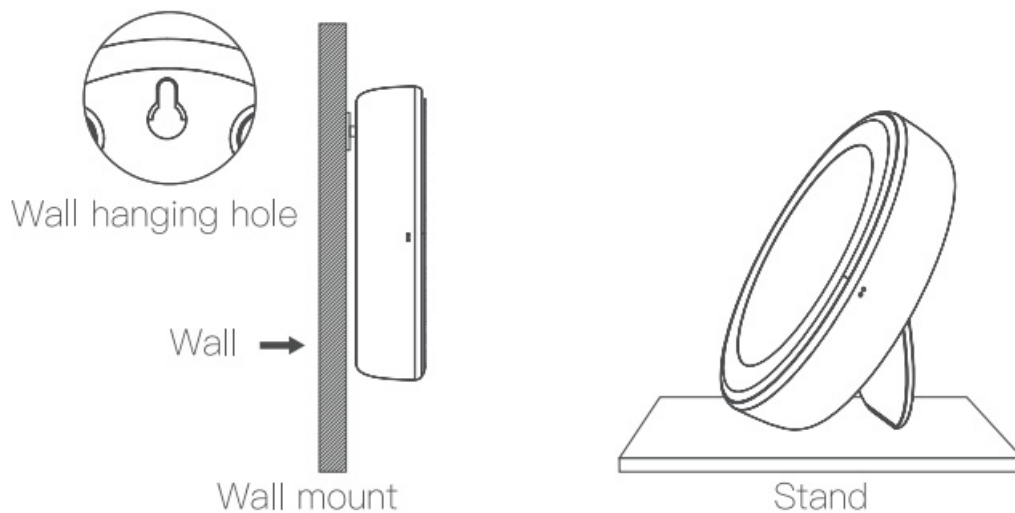
1. Scan QR code identification/search and download BlitzWolf APP in the APP Store.



2. Sign up for BlitzWolf APP
3. GO to the home page or APP, Click + On the upper right corner, and select the corresponding device to add
4. Confirm that the device WIFI icon is in flashing state and the device is in pairing state
5. Press the operation prompt to enter the WIFI password
6. Wait a moment to complete the pairing process and Customize the device name

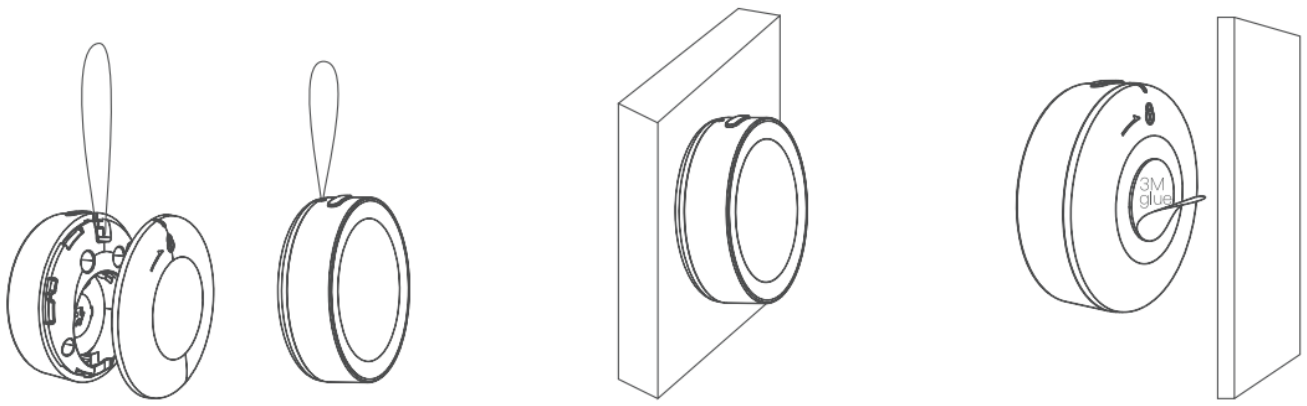
### Select the correct location for placement/installation

Indoor Weather Station



1. Hanging: use wall hanging holes to install on the wall.
2. Put: open bracket directly put on the table.

### Detect Sensor



1. Suspension: take off the battery cover and pass through the hole into the rope (the rope must be supplied by oneself).
2. Magnetic absorption: built-in strong magnetic can be adsorbed on the surface of metal objects.
3. Double-sided adhesive tape: use double-sided adhesive tape on a dust-free surface.

## Q&A

### What functions does the APP have?

APP has the following common functions, which can be set according to APP prompts. Specific operation methods can be logged on the official website for detailed operation methods.

1. Obtain equipment location, according to the location of the local Weather information.
2. Record and collect the local temperature and humidity change trend, analyze the maximum and minimum values and automatically generate the temperature and humidity change chart.
3. Overtemperature alarm function.
4. Unit switch: temperature unit, wind speed unit, pressure unit, 12H/24H Switch.
5. Display/turn on Some parameters: UV index, wind speed, air pressure, body sensing temperature, temperature and humidity, weather forecast, date, and week.

### Judgment of the farthest installation distance.

1. Place the main machine indoor.
2. Place the auxiliary machine indoor/outdoor. Make sure that the main machine and the auxiliary machine are within the communication distance
3. Press the "SYNC/PAIR" button on the main machine to enter the data synchronization mode, and the buzzer will sound; press the button on the auxiliary machine, the auxiliary machine transmits data to the main machine. After the main machine receives the data, the buzzer will sound 3 times; repeat the step or press the button on the auxiliary machine until the main machine can't receive the data, the buzzer will no longer sound, indicating exceed the farthest installation distance between the main machine and the auxiliary machine.

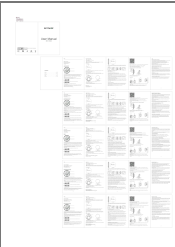
### The auxiliary machine is offline.

Answer: Check if there are any metallic objects nearby. Place the machine away from metallic objects, the auxiliary machine will automatically reconnect. Or press the "SYNC/PAIR" button on the main machine, and then press and hold the button at the top of the auxiliary machine to reconnect.

### How to add a new auxiliary machine?

Answer: Press the “SYNC/PAIR” button on the main machine, and then press and hold the button at the top of the auxiliary machine, you will hear the main machine buzzing, the auxiliary machine will be synchronized to an unpaired channel. The main machine can pair three auxiliary machines at most.

### Documents / Resources

	<a href="#">BlitzWolf BW-WS02 WiFi Smart Weather Station with App Control</a> [pdf] User Manual BW-WS02, WiFi Smart Weather Station with App Control
---	---