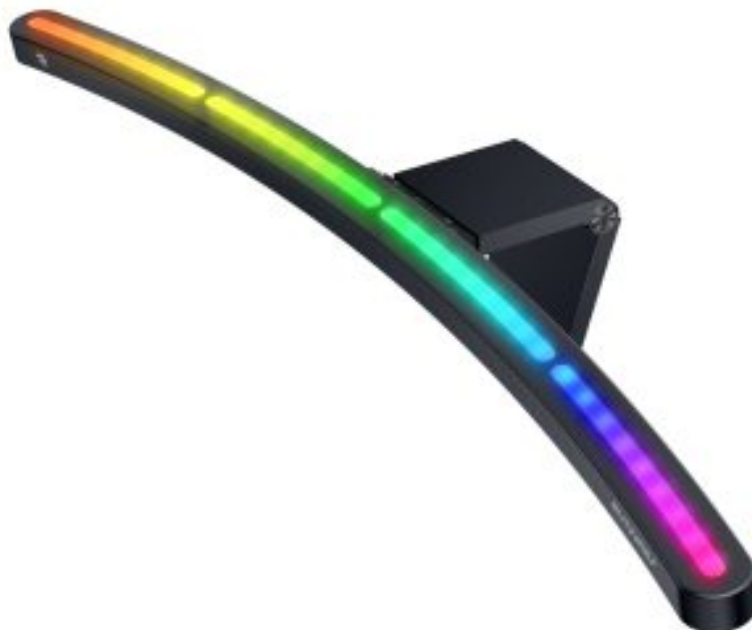


BLITZWOLF BW-CML3 RGB Curved Computer Monitor Light Bar with R1000 Curvature User Manual

[Home](#) » [Blitzwolf](#) » BLITZWOLF BW-CML3 RGB Curved Computer Monitor Light Bar with R1000 Curvature User Manual 

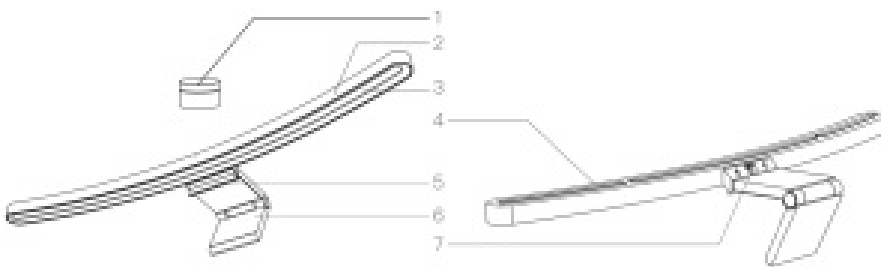
BLITZWOLF BW-CML3 RGB Curved Computer Monitor Light Bar with R1000 Curvature



Contents

- [1 At A Glance](#)
- [2 Package Included](#)
- [3 Specifications](#)
- [4 Installation](#)
- [5 Operation](#)
 - [5.1 Remote Control Pairing Way](#)
 - [5.2 White light Setting](#)
 - [5.3 RGB Ambient Light Setting](#)
- [6 Cautions](#)
- [7 Documents / Resources](#)
- [8 Related Posts](#)

At A Glance



1. Mini Remote Control
2. Lamp Pole
3. White & Warm LED Bead
4. RGB LED Bead
5. Fixed Holder
6. Collapsible alloy stand
7. Type- C Port

Package Included

- Monitor Light X1
- Remote Control X1
- USB To Type-C Cable X1
- User manual X1

Specifications

Model: BW- CML3

Material: Aluminum+ABS+PC

Input: DC5V / 1 A

Rate Power: 5W

Curvature: R1000

CRI: >97

LED Color: 2900- 6000K+RGB

LED Quantities: 1 00pcs SMD2835+40pcs SMD5050

White Brightness: 500lux

Ambient Mode: 2 Kinds+Music Sync

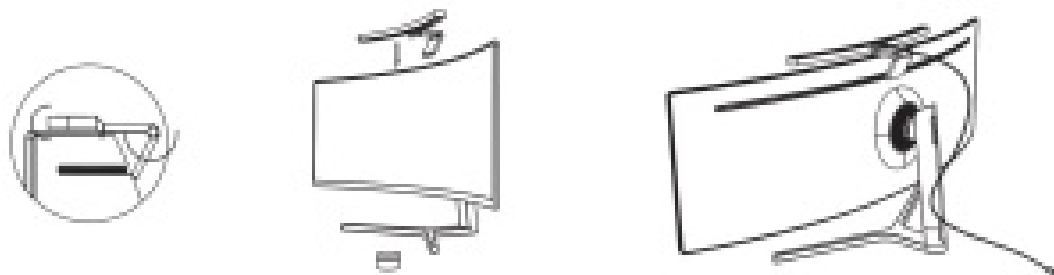
Control Way: 2.4GHz RF Control

Product Size: 550*145*30mm

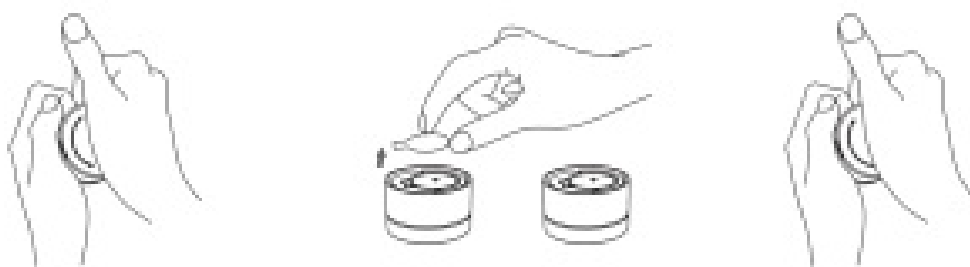
Remote Control Size: CD45X27mm

Product Weight: 515g

Installation



Rotate the clip and place it firmly on the monitor or computer, then connect the power cable to monitor light and power adapter, and plug the power adapter into wall socket. When the lamp is first powered on, white light and RGB light will be on at the same time



Hold the bottom of the remote control with one hand, press the bottom anti-slip pad with the other hand, and turn it counterclockwise to open the back cover of the remote control. Remove the insulating gasket and close the back cover, turn clockwise to lock the back cover in place.

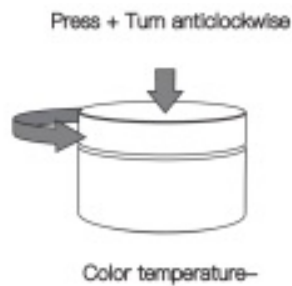
Operation

Remote Control Pairing Way

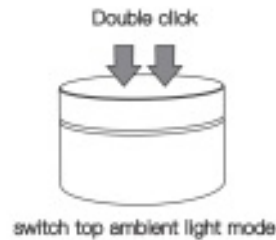
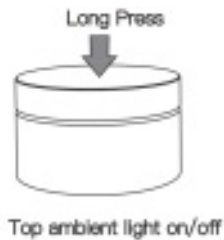
Plug in the power again and hold down the remote control for a few seconds. When the RGB light slowly flashes 3 times, it means that the remote control is paired successfully. If you want to cancel the pairing, plug in→power off→plug in, the RGB light will rapidly flash 3 times to unpair.

White light Setting





RGB Ambient Light Setting



- Double click to cycle through the effects of the ambient light, which has three modes.
 - 1: Colorful gradient;
 - 2: Colorful + breathing flashing gradient;
 - 3: Sound pick- up Colorful light effect;
- If the remote control is switched to the Music Sensing mode, the RGB colourful will go out if there is no ambient sound, and the marquee light effect will only appear if there is sound sensing in the surroundings.

Tip:

1. The default memorizes the ambient light effect mode used before turning off the lights last time.
2. After a normal shutdown or an unexpected shutdown, the lamp will enter the mode used before the shutdown by default.

Cautions

1. It is recommended to use with 5V / 2A adapter for better experience.
2. This product can be applied to flat or curved displays with a thickness of 0~45mm.



SCHEUFER Technologies GmbH

EC REP Address: Hertleinstrasse 37, 91052, Erlangen, Germany

E-mail: Mark.Zhang@scheufer.com



VISHTEC UK Co.,Ltd


UK REP Address: Unit G25 Waterfront Studios, 1 DockRoad, London, E16 1AH

E-mail: Vincent.feng@vish-tec.com





Documents / Resources

	<p>BLITZWOLF BW-CML3 RGB Curved Computer Monitor Light Bar with R1000 Curvature [pdf] User Manual</p> <p>BW-CML3, RGB Curved Computer Monitor Light Bar with R1000 Curvature, BW-CML3 RGB Curved Computer Monitor Light Bar with R1000 Curvature, BW-CML3 RGB Curved Computer Monitor Light Bar, RGB Curved Computer Monitor Light Bar, Monitor Light Bar, Light Bar</p>
---	--

[Manuals+](#)