



## BLING LSC-030-W3 Smart LED String Lights User Manual

[Home](#) » [BLING](#) » BLING LSC-030-W3 Smart LED String Lights User Manual 

# BLING

LSC-030-W3 Smart LED String Lights  
User Manual



Thank you for choosing us. To optimize users' experience, please use the string height according to the following instruction



**Warning**

1. Please check if the string light is intact before installation
2. Make sure to cut off the power before installation

3. Please do not place this light in corrosive conditions
4. If there is any damage to the cord, please cut off the power and stop using it immediately
5. Please do not retrofit the light within the warranty period
6. To ensure the light works properly, please use the voltage indicated on the packing
7. please do not use chemical solvents during routine maintenance

## Contents

- 1 Package List
- 2 Specification
- 3 Size
- 4 Initial Setup
- 5 Remote Controller
- 6 Add devices to Smart Life APP
- 7 Control the device in the Smart APP
- 8 How to control the light with Amazon Alexa?
- 9 How to control the light with Google Assistant?
- 10 Troubleshooting
- 11 Fail to control the string lightly with the remote controller
- 12 Documents / Resources
- 13 Related Posts

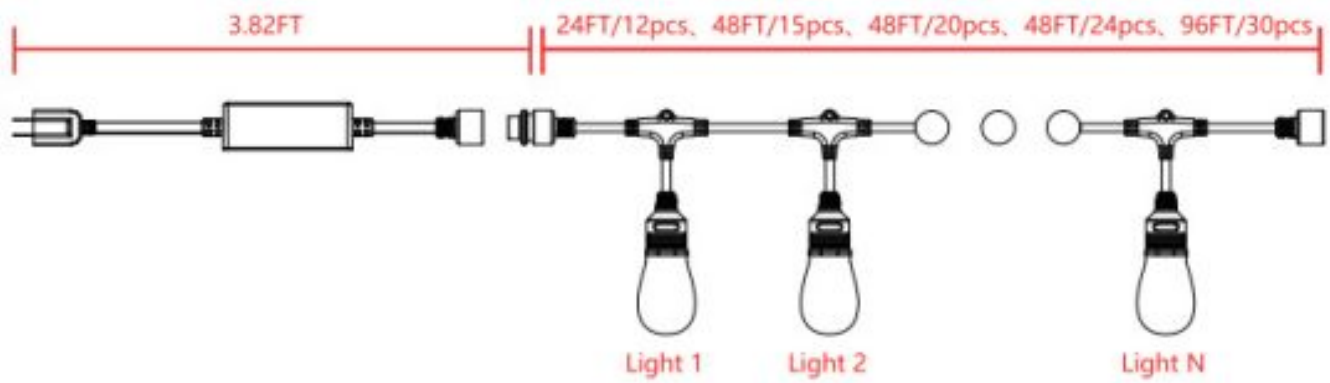
## Package List

Led string Light	1pcs
Remote Controller	1pcs
User manual	1 pcs
Cable ties	A few

## Specification

Color	RGBCW
Input Voltage	AC100-240V 50/60Hz
Waterproof Level	IP65
Controlled By	Alexa, Google Assistant
Battery for Controller	CR2030/CR2025
Lifespan	50000H
Working Temperature	-20°-40°

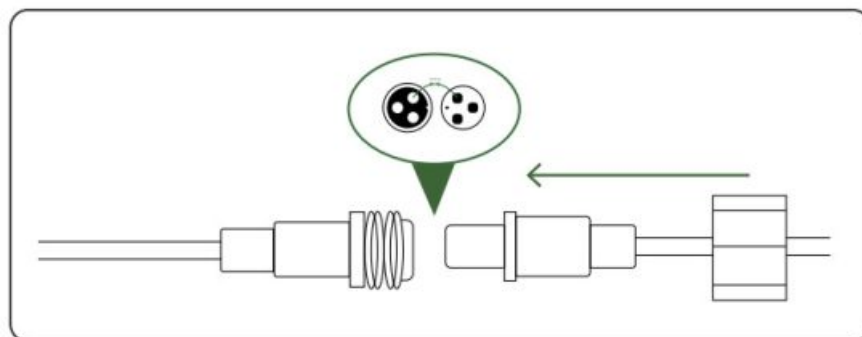
## Size



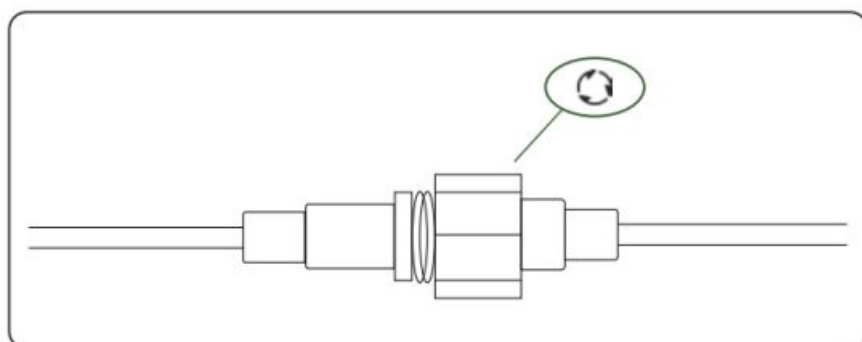
Number N	Mode	Length	Power
12	LSA-012-W3-C4N-K1-ee-fff	24FT	12W
15	LSA-015-W3-C4N-K1-ee-fff	48FT	15W
20	LSA-020-W3-C4N-K1-ee-fff	48FT	20W
24	LSA-024-W3-C4N-K1-ee-fff	48FT	24W
30	LSA-030-W3-C4N-K1-ee-fff	96FT	30W

## Initial Setup

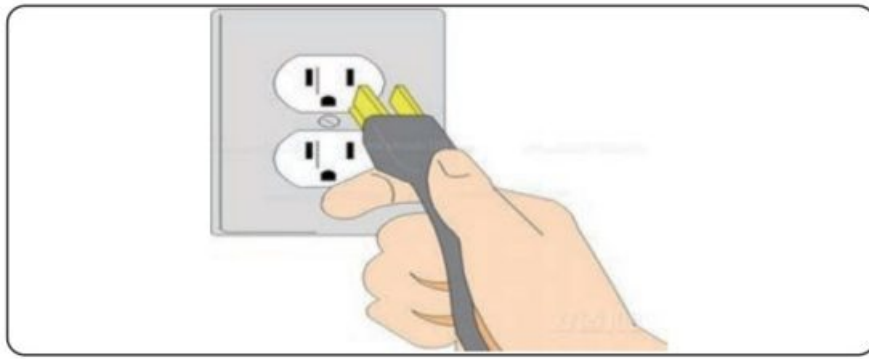
**Step I:** Connect string lights as indicated in the picture



**Step2:** Firmly screw the wire nut



**Step3:** Power on



Before installing, plug the smart string lights into an outlet to check if all lights work properly  
 Before hanging up please test to confirm the smart string lights can be connected to the APP  
**Note Please unplug the smart string lights before mounting.**

## Remote Controller

Notice Please press the button for a longer time or press more times to get a better experience



Buttons	Function
On-Off	Press to turn the string light on/off.
Pair	Long press the button for more than 8 seconds till the string enter pairing mode with red light flash.
Lock/Unlock	Short press to disable all the buttons with the lights flash one time or enable all the buttons with the lights to flash two times.
Scene Modes	Press MODE+or MODE-button to change the modes.
Adjust Speed	Press the button to speed up or slow down the lighting effect among 5 levels.
Adjust Brightness	Press to adjust the light brightness among 8 levels.
Off Delay	Press in and the string light will be automatically turned off 1 or 3 or 6 hours later.
Color Buttons	Press to change the color
CW Buttons	Press to switch colors between warm yellow, warm white, nature white, and cool white.
Flash	Press to flash the string light.
Fade	Press to fade the string light.
Random Change	Press to change the color automatically and randomly.

1. **Code matching:** You should press the “1 H” and “W” buttons before the string light works for 3 minutes, the lights will flash one time with blue. Then other remote controllers can’t control the string light.

**Decode:** You should press the “1 H” and “W” buttons before the string light works for 3 minutes, the lights will flash two times with blue. Then all remote controllers can control the string light.

- The remote controller has a memory function, which means it can start at your last choice of color and mode.
- After a period of usage, the remote controller might run out of battery. It will become insensitive and the available detection distance may be shortened. You can first try to replace the battery as per the instructions shown below. If the remote controller still fails to work after replacing the new battery, please contact the seller for help.





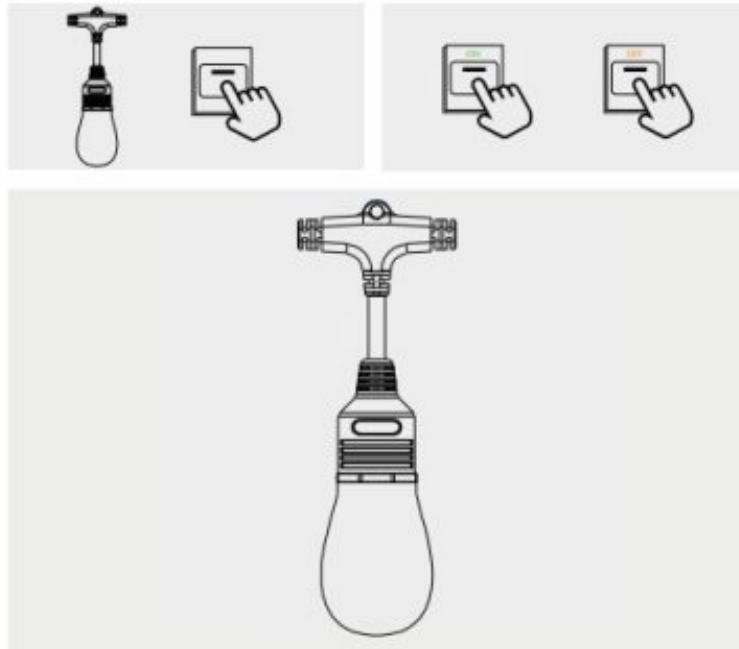
<https://smartapp.tuya.com/smartlife>

Please read this manual carefully before using

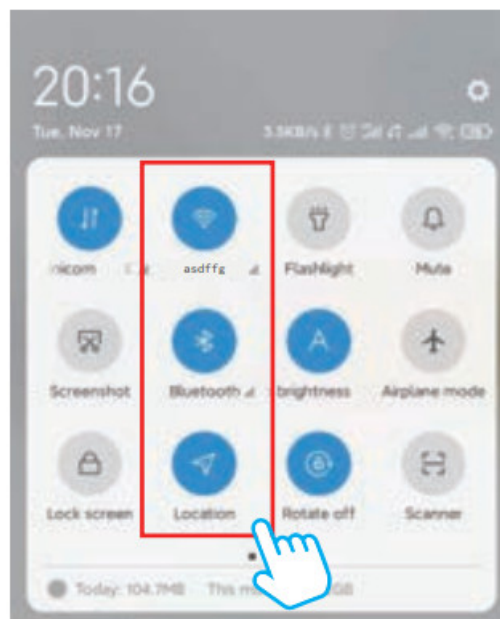
Before going to the next steps, please download the APP by scanning the above code or simply search the keywords "Smart Life" in the App Store or Google Play

### **Add devices to Smart Life APP**

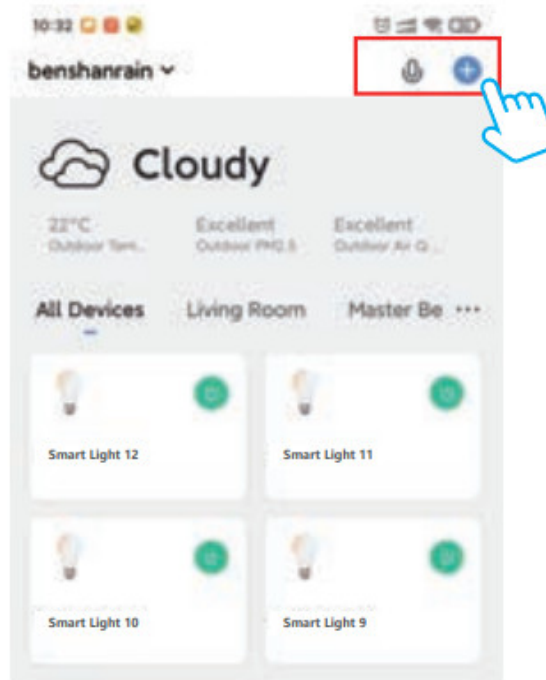
1. Turn the switch ON/OFF/ON/OFF/ON, or press the pair button for more than 12s before the lights work for 3 minutes. The device will blink to get ready for the network connection



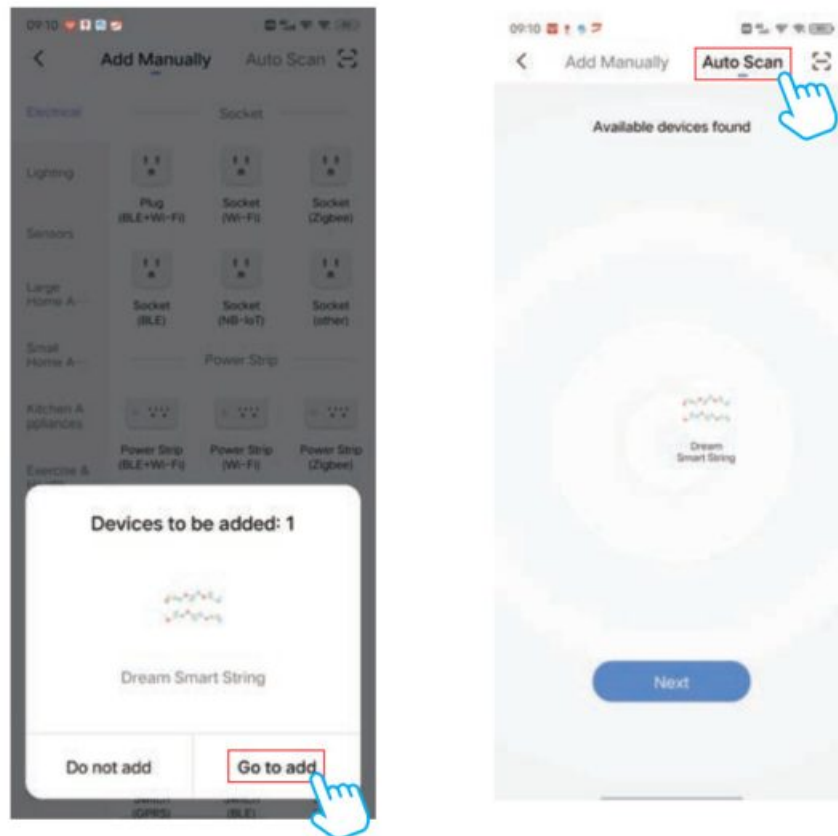
2. Make sure your mobile device is connected to your home ii(24 Ghat only)
3. Enable Bluetooth and Location settings on the mobile device



4. Goto "Smart Life" APP and login with your account, Click+on the upper right corner

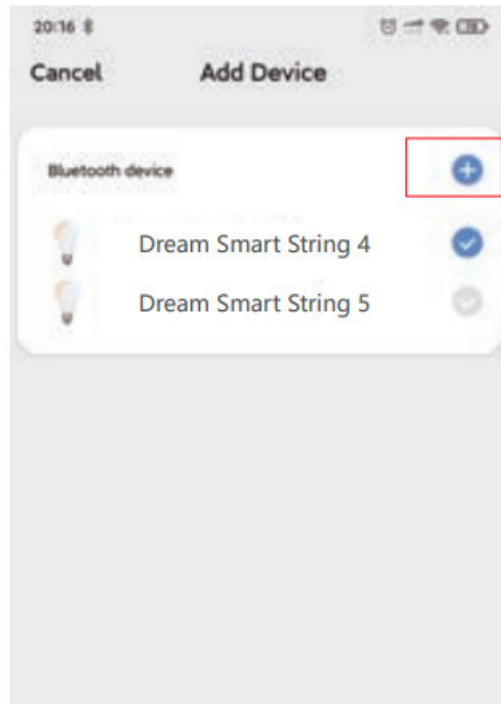


5. A window will pop up and click Go to add, if no popup window, please click Auto-Scan on the top middle screen

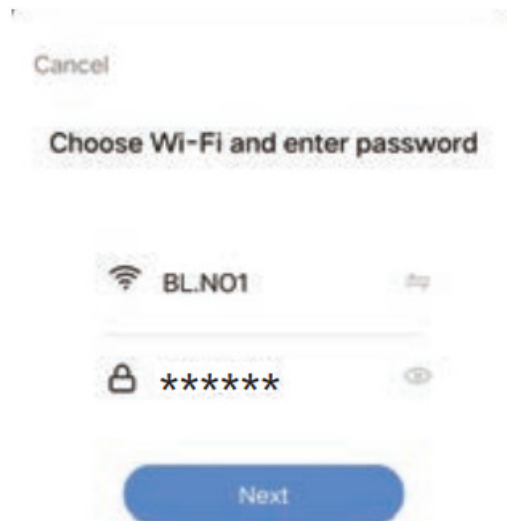


6. Select the device in the list you want to connect and click + (select to connect one by one, not support on multi-device selected)





7. Input the Password” of your home wifi and click “Confirm” on the popup window.



8. Wait till the pairing process is complete and click “Done” on the right top corner, it will go to the manage page of this device (If there are multi-devices that are ready for network connection, it will go back to the device list when you click “Done”)

**Tips.**

- a. The name you gave to the device will be used again when paired to Amato Alexa 8e Go0ogle home for voice control please do keep it in mind
- b The device name is suggested to be consist of English words and Arabic numerals, please do not use Special characters



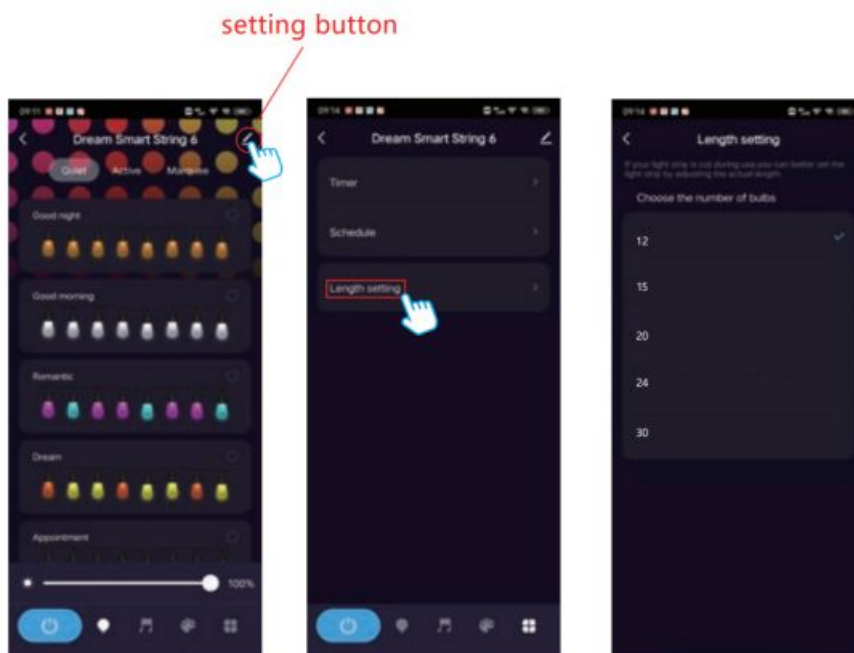
**Added successfully**



## Control the device in the Smart APP

### Length setting

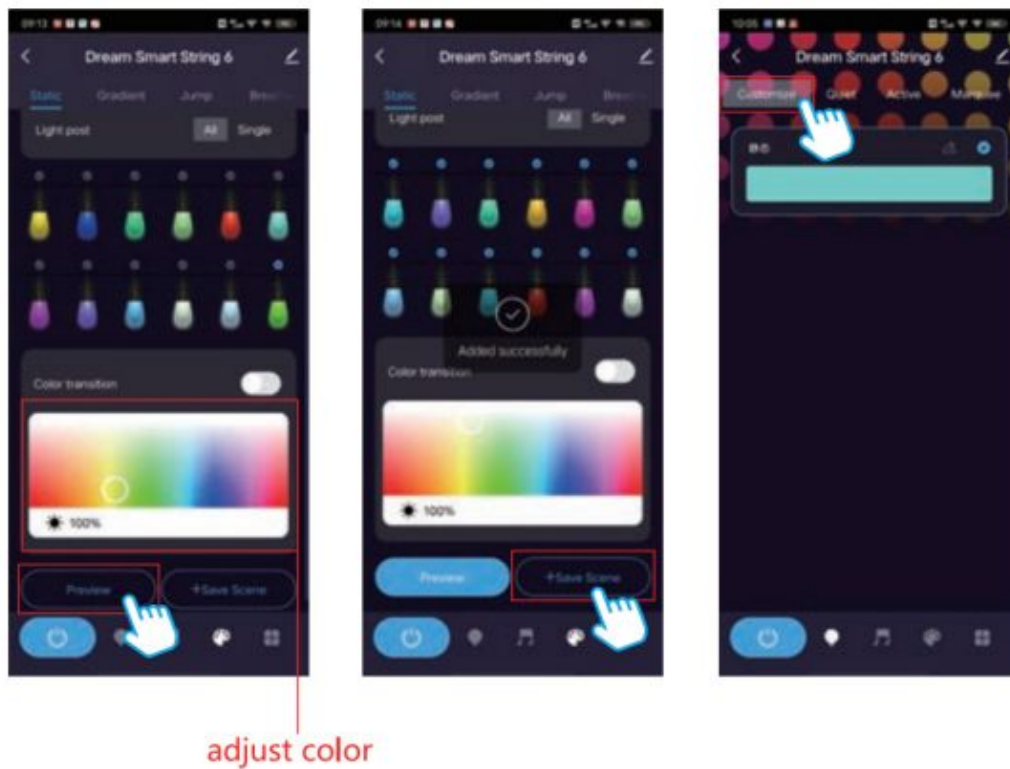
Click the setting button” on the upper right corner and check the “Length setting button. Choose the number of bulbs that you have purchased Here we choose “15”.



### Color adjustment

- Choose the color that you like, then like the Preview” button to gee the effect you have set

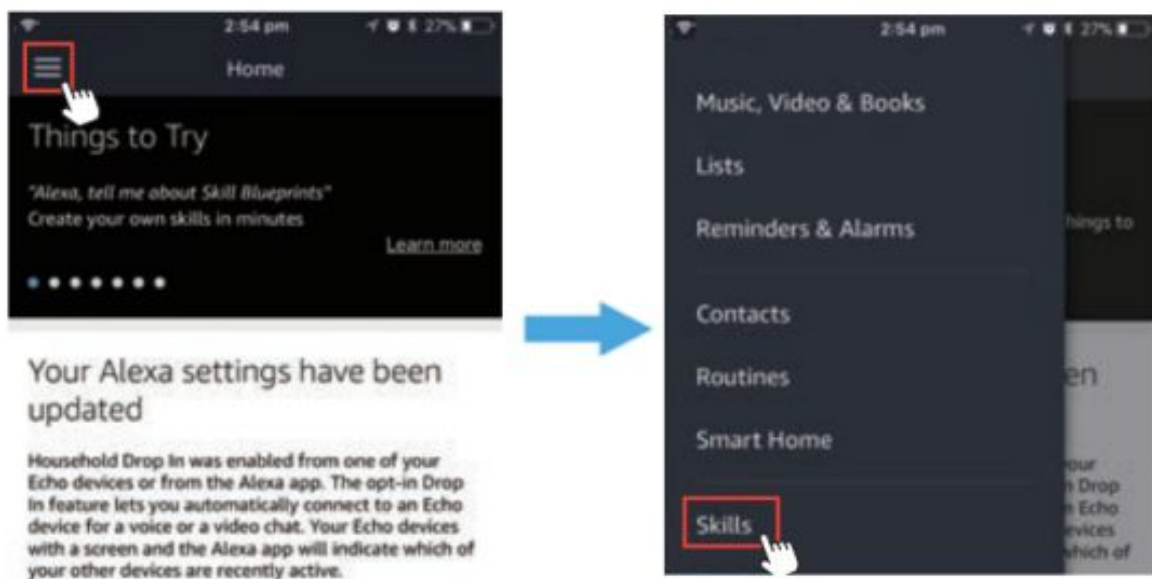
- If you lick the “Save Scene’, the scene you have chosen will be saved on the Customize page as shown in the picture



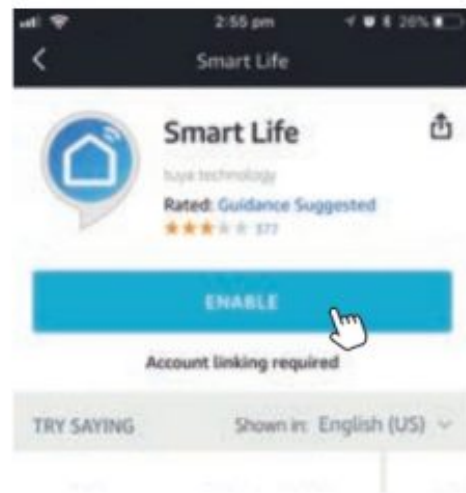
## How to control the light with Amazon Alexa?

please make sure that your Alexa app is connected to Echo and both work well under your ii network.

**Step A:** Log in to your Alexa App, tap the top left corner, and the “Skills,

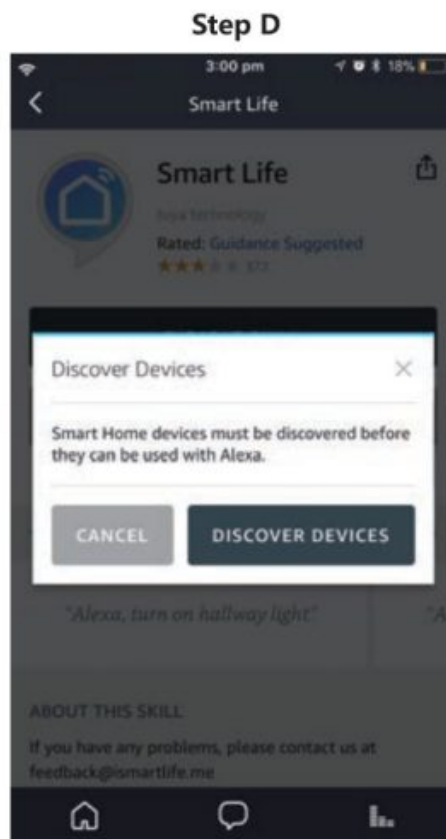


**Step B:** Type Smart Life”, find “Smart Life” from the search result, and tap it to enable the skill.



**Step C:** Enter your Smart Life App account and password. Tap Link Now, then tap Authorize” on the next page to bind the Smart Life account to Alees.

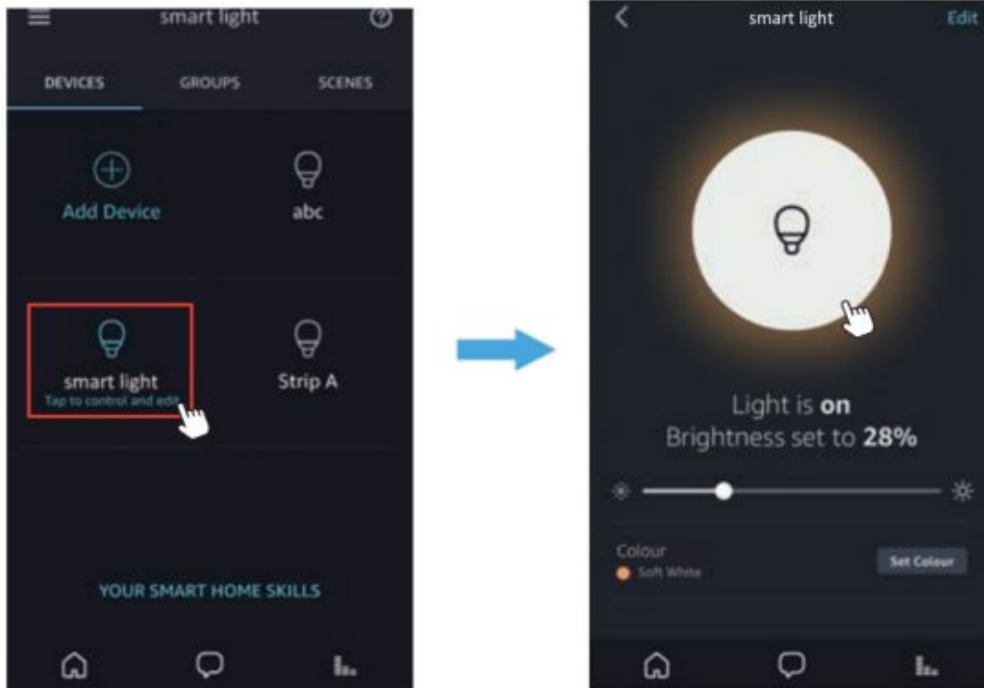
**Step D:** When your Smart Life account is bound to Alexa, ta. “DISCOVER DEVICES” to detect the light.



**Step E:** When the named light is paired to Alexa from Smart Life, it will show on the device page (see the smart light” example)

**Step F:** Now you can control the light with Alexa App on the setting page. lo turn on or off the light, simply tap the bulb icon

**Step G:** You can also voice control the height with Alexa by giving these commands. Alexa, turn on device name” Ale, set device name to’ cola Alexa, set’ device name’ to number Device name is the one you give to the light, the light is named smart light’ in this user guide. For example,” Alexa, turn on smart light Alexa, set mart hight’ to blue’ “etc.



**Note:** To control the light with Google Assistant, please continue to read Part Four.

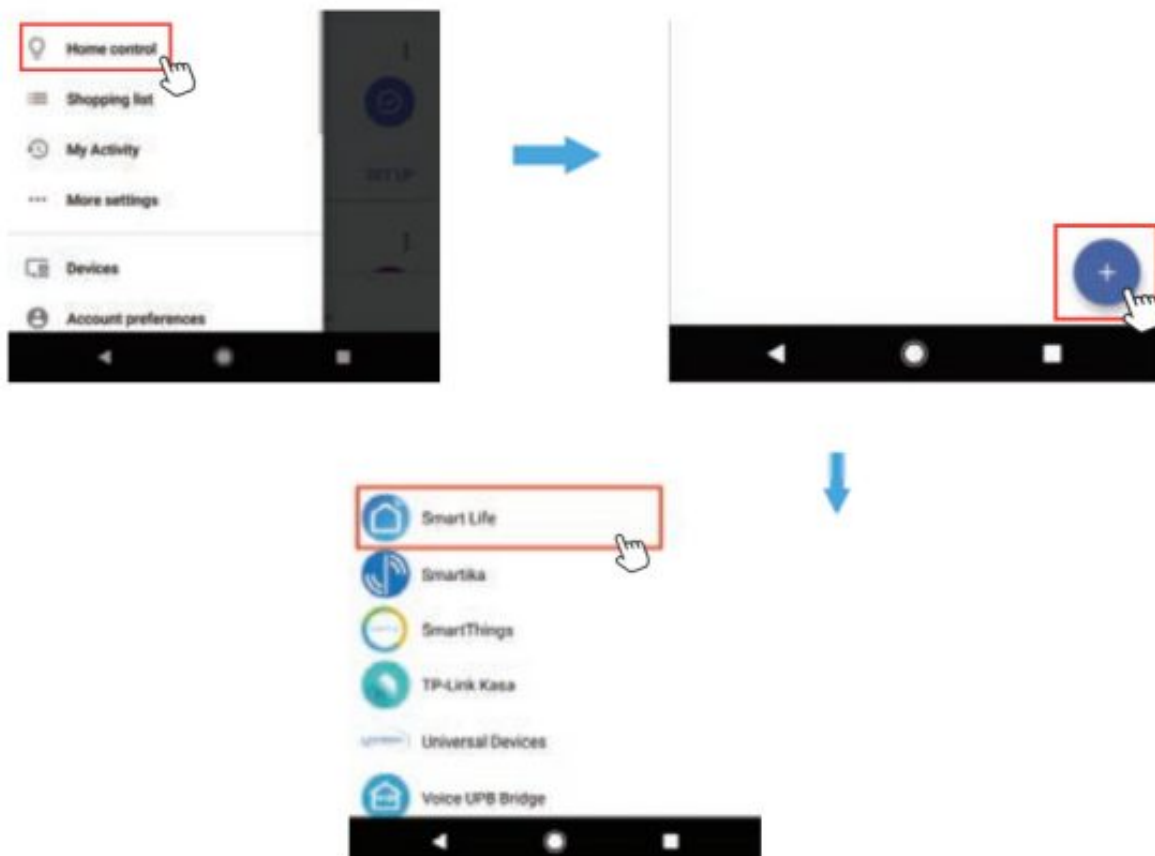


### How to control the light with Google Assistant?

**Step A:** Login Google Assistant App, tap “Home Control” on the left sidebar page

**Step B:** Tap + button on the bottom right to enter the next page.

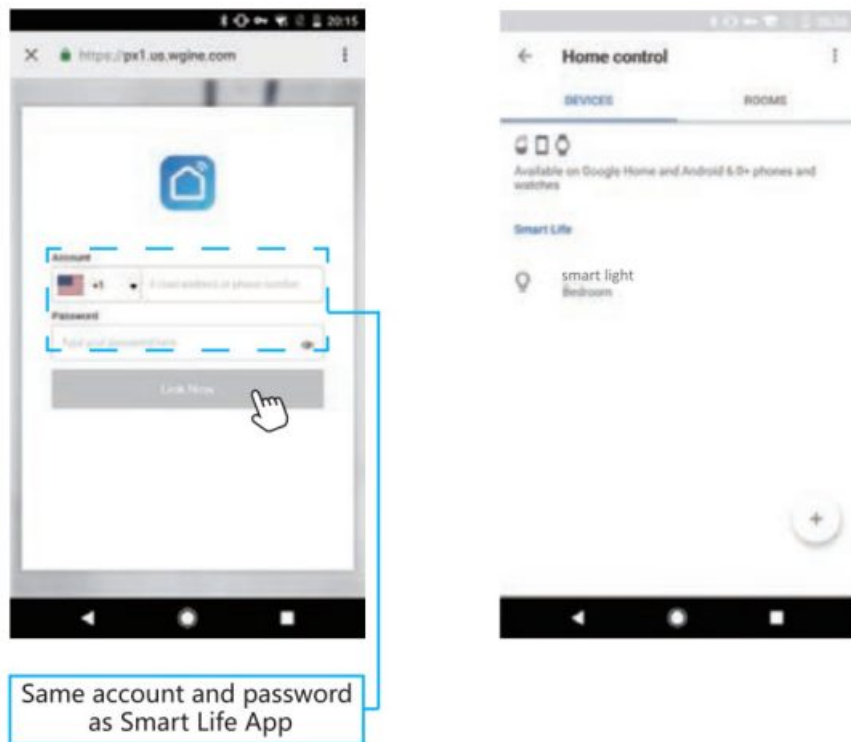
**Step C:** Find Smart Life” from the sidebar list.



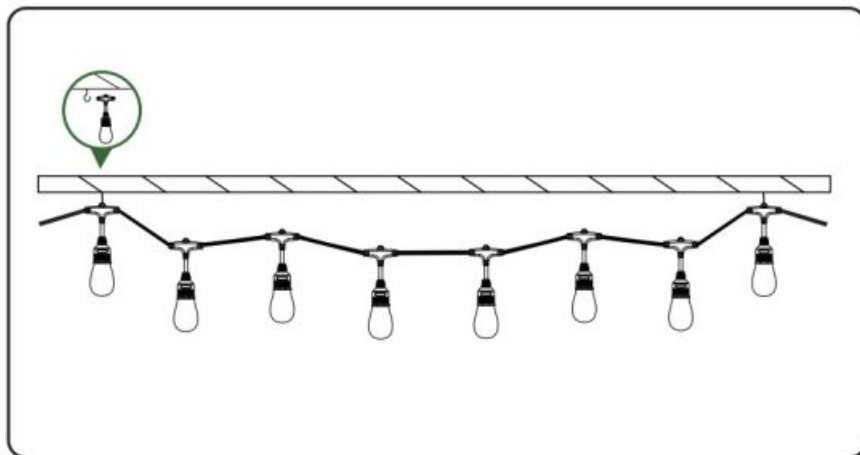
**Step D:** Enter your Smart Life App account and password to bind your Smart Life account to Google Assistant

**Step E:** You will find the named light shown on the Home Control page Now you can control the light on Google Assistant App or voice control it by giving these commands” Ok Google, turn on’ device name” Ok Google, set ‘device name’ to ‘color’ “Ok Google, set device name to ‘umber’

The Device Name is the one you give to the light. The light is named smart light’ in this user guide. For example,” Ok Google, turn on the smart light’ Ok Google, set ‘smart light’ to blue’ ” etc.



When hanging the light string it is recommended to use Shooks zip ties, cable ties or etc. to hang the hole on the top of each bulb When you hang the string lights, please do not pull the wires too tight. Keep the wires loose to avoid breaking the signal line inside.



## Troubleshooting

### Fail to connect the smart life App

- Ensure the string lights are powered on
- Confirm Bluetooth and 2ghz WIFI network on your smartphone is enabled
- Ensure the string lights are flashing to get ready for network connection
- Ensure your wifi password is correct
- If WIFI signal is too weak, reset your wifi router and try again. Or position your smartphone to lose to the control

box, then try again.

## Fail to control the string lightly with the remote controller

- power on again
- please press the button for more times
- please press the Lock /Unlock buttons to check whether the button is locked
- Press the H and W" buttons before the string height works for 3 minutes, the lights will flash blue, then the remote controller can work again

## FCC Statement

This equipment has been tested and found to comply with the limits for a Class B digital device, pursuant to part 15 of the FCC Rules. These limits are designed to provide reasonable protection against harmful interference in a residential installation. This equipment generates, uses, and can radiate radio frequency energy and, if not installed and used in accordance with the instructions, may cause harmful interference to radio communications. However, there is no guarantee that interference will not occur in a particular installation. If this equipment does cause harmful interference to radio or television reception, which can be determined by turning the equipment off and on, the user is encouraged to try to correct the interference by one or more of the following measures:

- Reorient or relocate the receiving antenna.
- Increase the separation between the equipment and receiver.
- Connect the equipment into an outlet on a circuit different from that to which the receiver is connected.
- Consult the dealer or an experienced radio/TV technician for help.


Caution: Any changes or modifications to this device not explicitly approved by the manufacturer could void your authority to operate this equipment.

This device complies with part 15 of the FCC Rules. Operation is subject to the following two conditions: (1) This device may not cause harmful interference, and (2) this device must accept any interference received, including interference that may cause undesired operation.

### RF Exposure Information

This equipment complies with FCC radiation exposure limits set forth for an uncontrolled environment. This equipment should be installed and operated with a minimum distance of 20cm between the radiator and your body.

## Documents / Resources

	<b><a href="#">BLING LSC-030-W3 Smart LED String Lights</a></b> [pdf] User Manual LSC-030-W3, LSC030W3, 2AI5T-LSC-030-W3, 2AI5TLSC030W3, LSC-030-W3 Smart LED String Lights, LSC-030-W3, Smart LED String Lights
-------------------------------------------------------------------------------------	---------------------------------------------------------------------------------------------------------------------------------------------------------------------------------------------------------------------