




BLING LIGHTING DMD-045-W3 Smart LED RGBCW String Light User Manual

[Home](#) » [BLING LIGHTING](#) » BLING LIGHTING DMD-045-W3 Smart LED RGBCW String Light User Manual 

Contents

- [1 BLING LIGHTING DMD-045-W3 Smart LED RGBCW String Light](#)
- [2 Size](#)
- [3 Touch button operation instructions](#)
- [4 Control the device in the Smart APP](#)
- [5 How to control the light with Google Assistant?](#)
- [6 Troubleshooting](#)
- [7 FCC Statement](#)
- [8 Documents / Resources](#)
- [9 Related Posts](#)

BLING LIGHTING

BLING LIGHTING DMD-045-W3 Smart LED RGBCW String Light



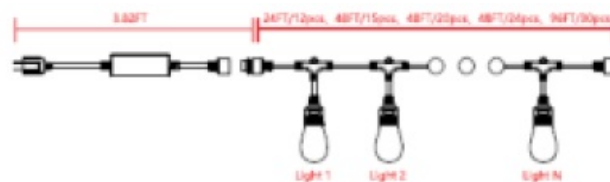
Smart LED RGBCW String light User manual

Thank you for choosing us. To optimize users experience, please use the string light according to the following instruction.

Warning

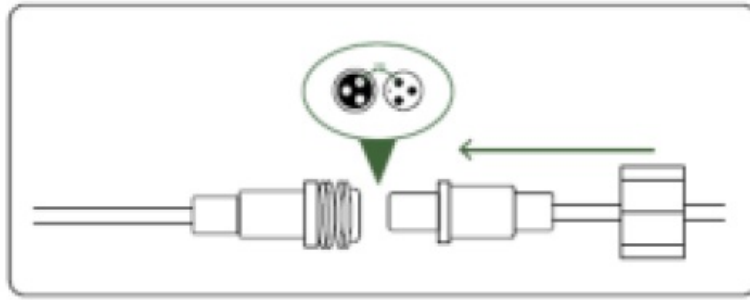
1. Please check if the string light is intact before installation
 2. Make sure to aut off power before installstion
 3. Please do not place this lght in corrosive conditions
 4. if there is any damage on the cord. please cut off the power and stop using it immediately
 5. Please do not retrofit the light within the warranty period.
 6. To ensure the light works propety, please use the voltage indicated on the packing.
- lease do not use chemical sobvent during routine maintenance

Size

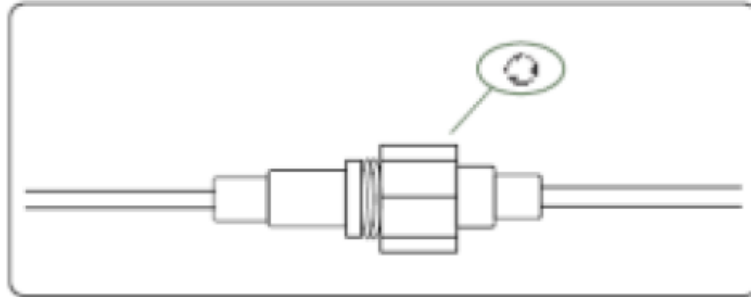


Initial Setup

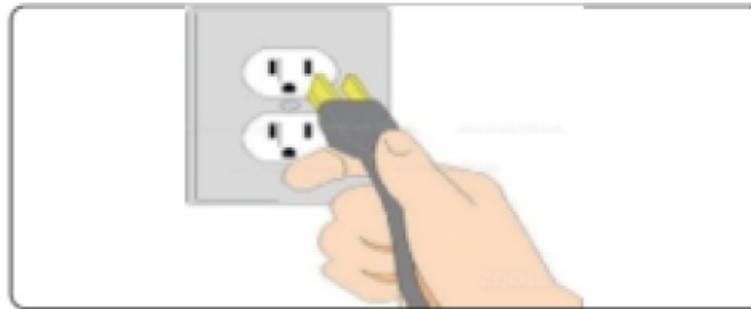
1. **Step:** Connect string lights as indicated in the picture



2. Step: Firmly screw the wire nut.



3. Step: Power on.



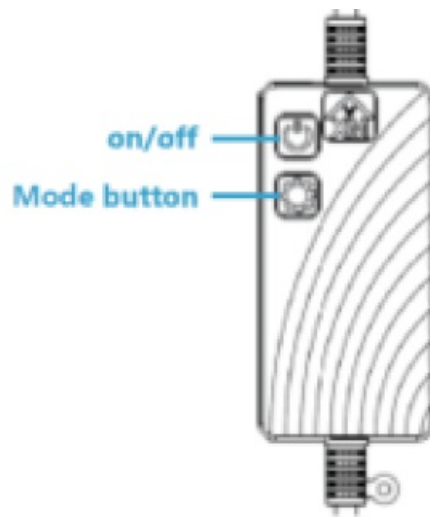
Before installing. plug the smart string lights into an outlet to check if all lights work properly

Before hanging up, please test to confirm the smart string lights can be connect to the APP

Note: Please unplug the smart string lights before mounting.

Touch button operation instructions

1. Switch button: short press the switch and long press the network for more than 5S
2. Mode button: Press to switch mode, including red, green, blue, yellow, purple, white, warm seven colors, flashing seven colors gradual change seven colors, breathing three colors, flowing water
In static color mode, change adjusts brightness. For dynamic magic mode, hold down to adjust speed
3. Lock and unlock:
Lock: If there is no operation after 180S, touch button automatically lock, touch failure
Unlock: Hold down the mode button for 5S, and the red light will blink once. Then hold down the switch button for 5S, and the red light will blink twice, and unlock. Any interruption of long pressing or disordering of touches will require a re-operation to unlock.
The device is unlocked each time it is powered on or configured successfully



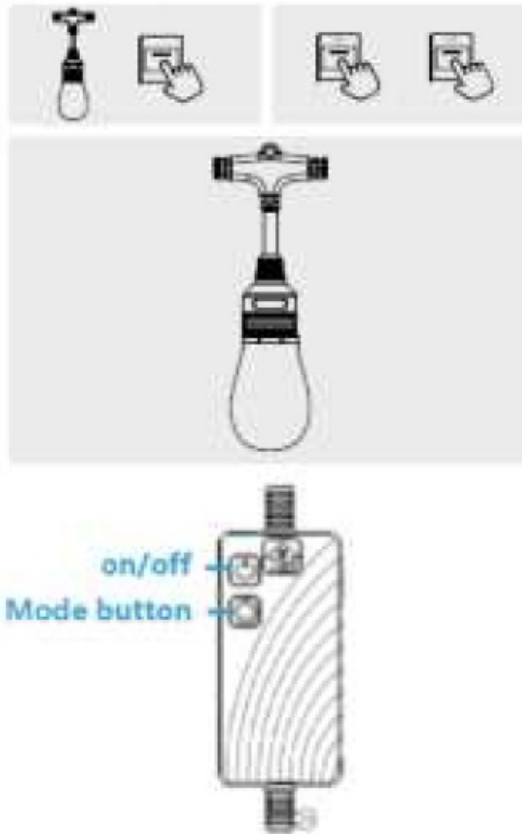
Smart String Light

Please read this manual carefully before using Before going to next steps, please download the APP by scanning above code or simply search keywords Smart Life in the APP Store or Google Play



Add devices in Smart Life APP

1. Turn the switch DN/OFF/ON/OFF/ON, or press the on/off button for more than 8s before the lights work for 3 minutes The device will get ready for network connection



2. Make sure your mobile device is connected to your home WiFi(2.4 Ghz only)



3. Enable Location setting on the mobile device
4. Go to Smart Life APP and login with your account, click on the upper right corner



5. A window will pop up and click "Go to add", if no pop-up window please click Auto Scan on the top middle screen



6. Select the device in the list you want to connect and click (select to connect one by one, not support on multi-device selected)



7. Input the "Password of your home wifi and click "Confirm" on pop up window



8. Wait till the pairing process complete and click "Done" on the right top corner it will go to the manage page of this device (If there are multiple devices which are ready for network connection, it will go back to the device list when you click "Done")

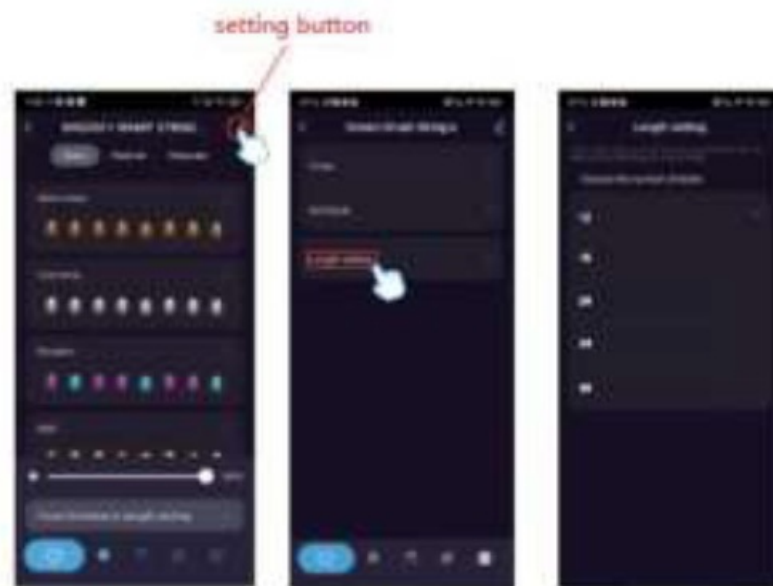
Tips

1. The name you gave to the device will be used again when pair to Amazon Alexa & Google home for voice control please do keep it in mind
2. The device name is suggested to be consist of English word and Arabic ummas, please do not use special characters

Control the device in the Smart APP

1. Length setting

Click the setting button on the upper right corner and click the Light setting button, Choose the number of buds what you have purchased. Here we choose 15



2. Color adjustment

Choose the color that you like, then click the "Preview button to see the effect you have set. If you click the "Save Scene, the scene you have chose will be saved on the Customize page as shown in the picture.



How to control the light with Amazon Alexa?

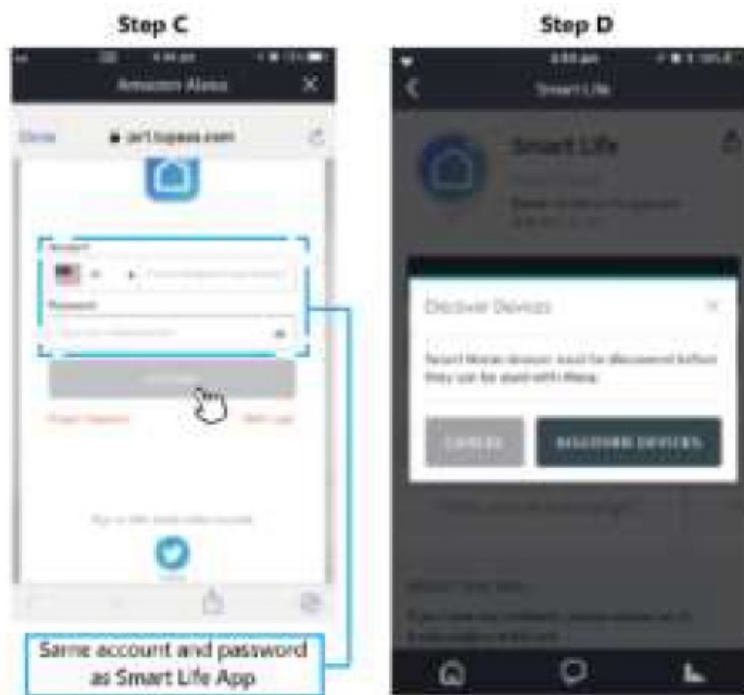
Please make sure that your Alexa app is connected to Echo, and both work well under your WiFi network

1. Step A: Log in to your Alexa App. tap top left corner, and tap "Skills"

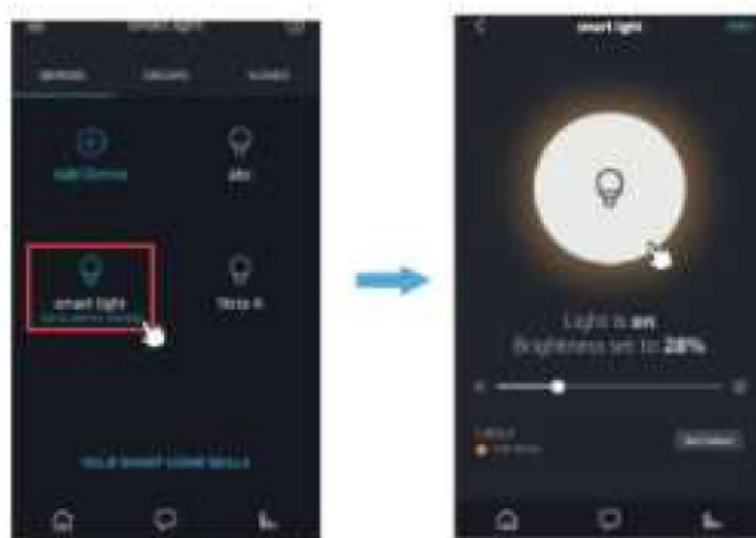
2. Step B: Type “Smart Life”, find Smart Life” from the search result and tap it to enable the skill



3. Step C Enter your Smart Life App account and password, Tap link Now, then tap Authorize on the next page to bind Smart Life account to Alexa
4. Step D When your Smart Life account is bound to Alexa tap “DISCOVER DEVICES to detect the light.



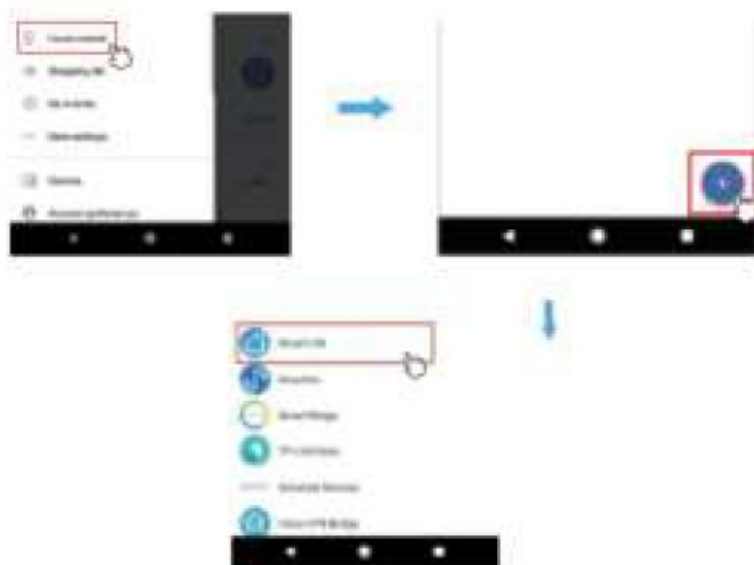
5. Step E: When the named light is paired to Alexa from Smart Life, it will show on the device page (see the smart light example)
6. Step F: Now you can control the light with Alexa App on the setting page. To turn on or off the light, simply tap the bulb icon.
7. Step G: You can also voice control the light with Alexa by giving these commands: "Alexa, turn on" device name, "Alexa, set device name to color", "Alexa, set device name to number". Device name is the one you give to the light. The light is named 'smart light' in this user guide. For example, "Alexa, turn on smart light", "Alexa, set smart light to blue", etc.



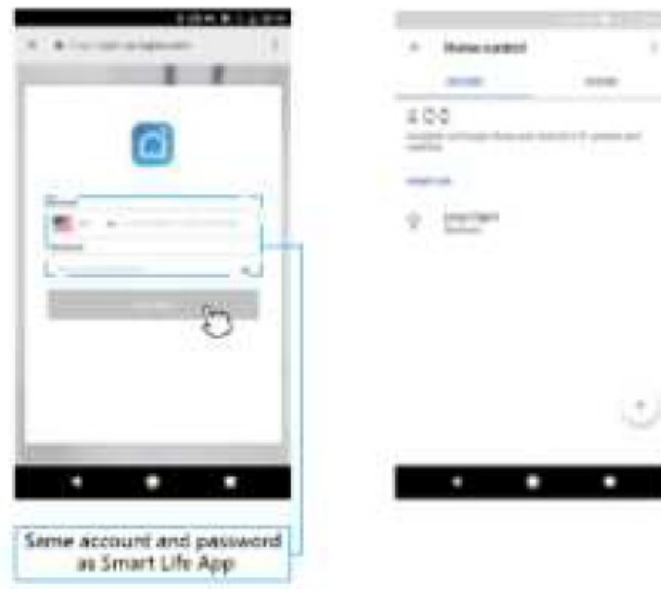
Note: To control the It with Google Assistant please continue to read Part Four

How to control the light with Google Assistant?

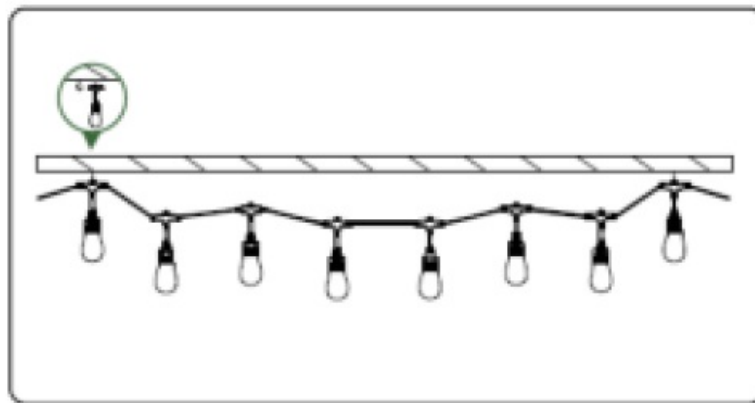
1. Step A: Login Google Assistant App, tag "Home Contro" on the left side bar page
2. Step B: Tap + button om the bottom right to enter next page.
3. Step C: Find Smart Life" from the sidebar list.



4. Step D. Enter your Smart Life App account and password to bind Smart Life account to Google Assistant
5. Step E: You will find the named light shows on the Home Control page. Now you can control the light on Google Assistant App, or voice control it by giving these commands: "Ok Google, turn on device name" "Ok Google, set device name" to 'color' "Ok Google, set device name to mumble". The device name is the one you give to the light. The light is named 'smart light' in this user guide. For example: "Ok Google, turn on smart light" "Ok Google, set smart light to blue" etc.



When hanging the light string, it is recommended to use S-hooks, zip ties, cable ties or etc. to hang the hole on the top of each bulb. When you hang the string lights, please do not pull the wires too tight. Keep the wires loose to avoid breaking the signal line inside.



Troubleshooting

Fail to connect the smart life App

- Ensure the string lights are powered on. Confirm Bluetooth and 2.4GHz WIFI network on your smart phone is enabled
- Ensure the string lights are flashing to get ready for network connection.
- Ensure your wifi password is correct.
- If wifi signal is too weak, reset your wifi router and try again. Or position your smartphone close to the control box, then try again
- Failed to control the string light with remote controller Power on again
- Please press the button for more times.
- Please press the Lock /Unlock buttons to check whether the button is locked.
- Press the "1H" and "W" buttons before the string light works for 3 minutes, the lights will flash with blue, then the remote controller can work again.

FCC Statement

This equipment has been tested and found to comply with the limits for a Class B digital device, pursuant to part 15 of the FCC Rules. These limits are designed to provide reasonable protection against harmful interference in a

residenael installation. This equipment generates uses and can radiate radio frequency enerTy and, if net installed and used in accordance with the instructions, my cause harmful interference to radio communications. However, there is no guarantee that interference will nat our ina particular installation. If this equipmet does cause harmful inberference to radio or tejewision reception which can be determined by turning the equipmet off and on the user is encouraged to try to comect the interference by one or more of the following ures

- Reorient or relocate the receiving antenna
- Increase the separation between the equipment and receiver.
- Connect the equipment inte an audit on a circuit different frem that to which the receiver is connected.
- Coast the dealer or an experienced radio/TV technician for help

Caution Ary changes or modifications to this deios not explicitly approved by the manufacturer could void your auto rity to operme tis equipment This device complies with part 15 of the FCC Rules Operation is subject to the following two conditions (2) This device may not cause hamal interference, and 2) this device must accept any interference received, including interference that may cause undesired operation.

RE Exposure Information

This equipment complies with FCC rad alien exposure lmits set forth for an uncontrolled environment. This equipment should be instaled and operated with minimum dlstance 20cm between the radiator and your body.

Documents / Resources

	<p>BLING LIGHTING DMD-045-W3 Smart LED RGBCW String Light [pdf] User Manual DMD-045-W3, DMD045W3, 2AI5T-DMD-045-W3, 2AI5TDMD045W3, Smart LED RGBCW Stri ng Light, DMD-045-W3 Smart LED RGBCW String Light</p>
---	--