

BLAZE
C8S Subwoofer



BLAZE C8S Subwoofer Installation Guide

[Home](#) » [BLAZE](#) » BLAZE C8S Subwoofer Installation Guide 

Contents

- [1 BLAZE C8S Subwoofer](#)
- [2 Introduction](#)
- [3 Installation](#)
- [4 Cables](#)
- [5 Specifications](#)
- [6 Product Usage Instructions](#)
- [7 Frequently Asked Questions](#)
- [8 Documents / Resources](#)
 - [8.1 References](#)

BLAZE

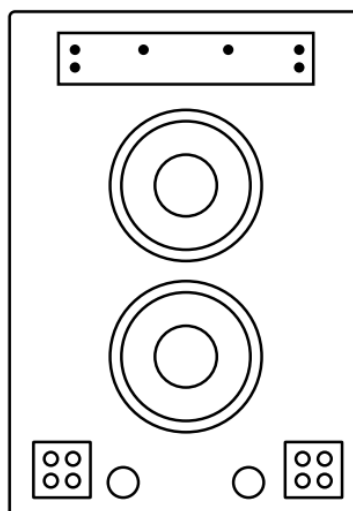
BLAZE C8S Subwoofer



Introduction

C8S is a compact and shallow on-wall subwoofer. The subwoofers face the wall and the sound is reflected out to the surroundings, allowing the subwoofer to blend discretely into any modern environment and offering full protection of the drivers. The C8S features a powerful 8" subwoofer with a dual voice coil and a passive radiator to extend the sub-bass performance to below 34 Hz. The built-in crossover with heavy-duty terminals allows the cables for the top-boxes to be connected directly from the C8S. The subwoofer features an integrated mounting system with removable feet. It can be wall-mounted with the drivers facing inward, or, by removing the feet, positioned on its front with the drivers facing upward—ideal for placement under a sofa or other furniture. Measuring only 16 cm deep – or 19 cm with wall mount, the C8S offers very loud output for its size with real sub-bass extension. C8S is available in black and white and is designed to be used together with the Ci loudspeaker series by Blaze Audio.

Included in the box



- Subwoofer
- Wall bracket
- Mounting template
- Safety letter

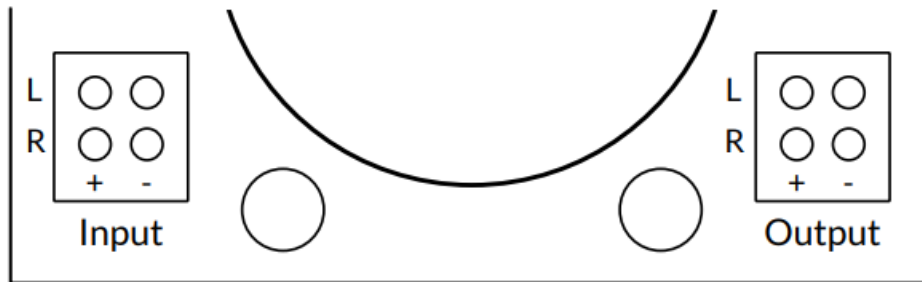
Installation

There are three distinct methods for connecting the subwoofer to the input terminals. We recommend utilizing our PowerZone™ Connect amplifier series, which is designed to seamlessly integrate with our downloadable speaker presets accessible at blaze-audio.com.

- **Option 1:** If you're NOT using a PowerZone™ Connect amplifier, consider using option 1.
- **Options 2 or 3:** If your loudspeakers and C8S bass module are linked to our PowerZone™ Connect amplifier, options 2 or 3 can be effectively utilized.

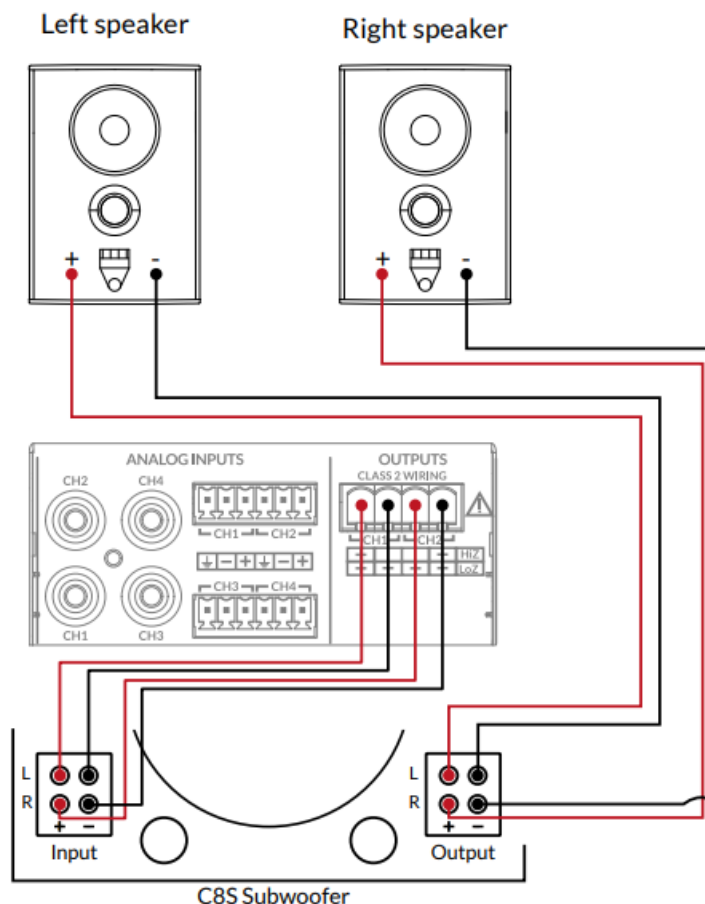
Connecting the speaker cable.

There are two sets of speaker terminals. The left terminal is for left and right input from the amplifier, while the right terminal serves as outputs for top boxes.



Option 1: Stereo Mode 8 ohm

1. Connect the positive (+) terminals from each amplifier output to the red terminals on the subwoofer, and connect the negative (-) terminals from each amplifier output to the black input terminals on the C8S.



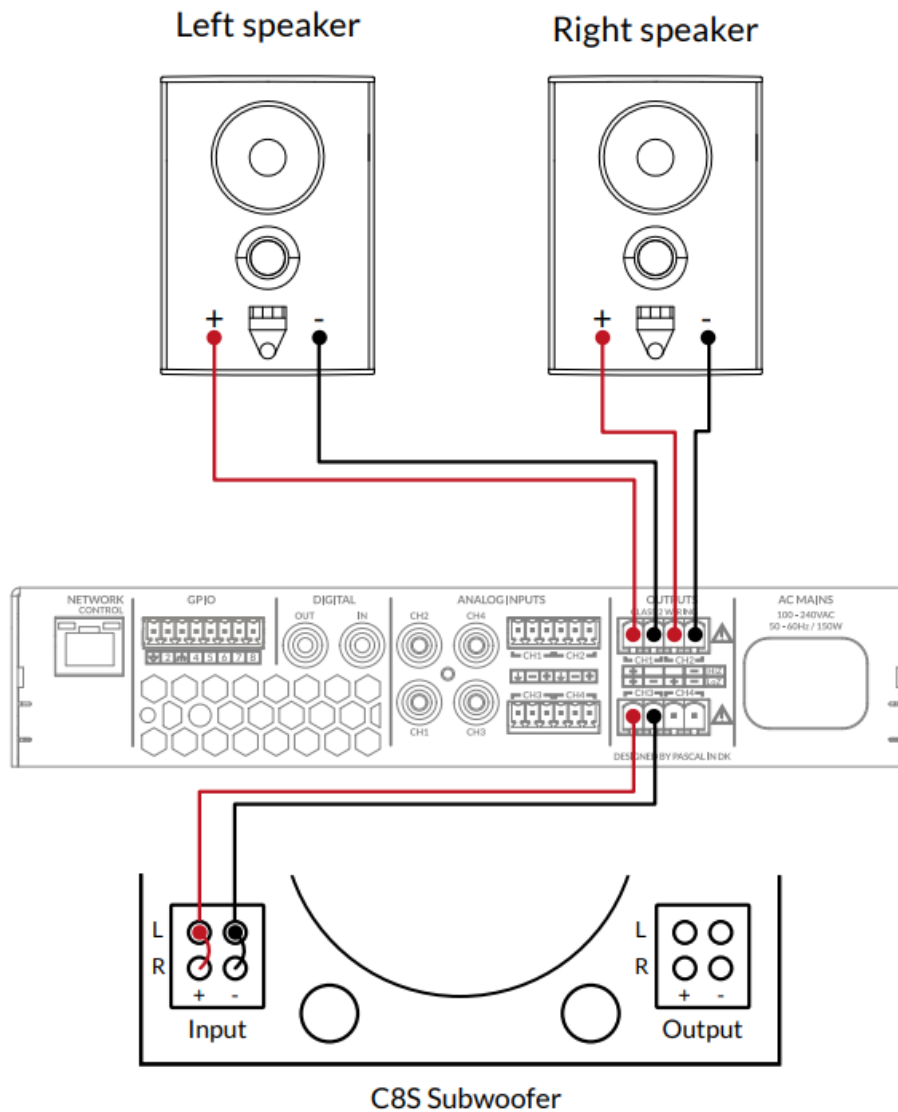
2. Connect L red (+) from the subwoofer output terminal to the red (+) input on your left speaker, and L black (-) from the subwoofer output terminal to the black (-) terminal on your left speaker. Likewise, connect R red (+) on

the subwoofer output terminal to the red (+) input on your right speaker, and R black (-) from the subwoofer output terminal to the black (-) terminal on your right speaker.

Note: When connecting, polarity shall NOT be reversed, as the reflected sound from the wall will be in phase with the top boxes.

Option 2: Dual Mono Sum 4 ohm:

This configuration is ideal for use with our PowerZone™ Connect amplifier series. The subwoofer's dual voice coil bass unit allows for parallel connection of the inputs, requiring only a single cable run to the subwoofer. This low-impedance solution is particularly suitable when long cable runs are not needed.

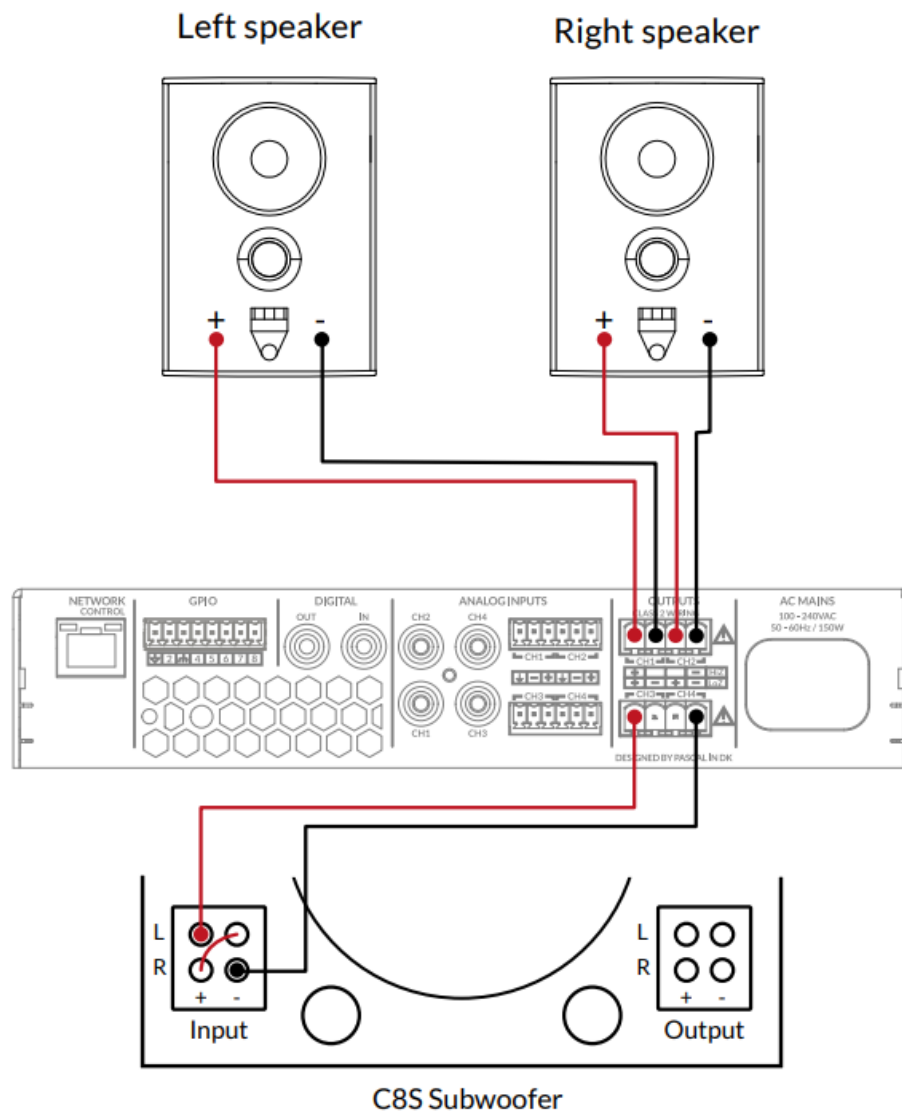


1. Connect the positive (+) terminals from the amplifier output to the red terminals on the subwoofer, and connect the negative (-) terminals from the amplifier output to the black input terminals on the C8S.
2. Establish a parallel connection between the L and R inputs as illustrated in the diagram.

Note: The output on the PowerZone™ Connect amplifier. shall be set to “Sum” of Left and Right in Output Routing

Option 3: Dual Mono Sum 16 ohm:

This configuration is ideal for use with our PowerZone™ Connect amplifier series. The subwoofer's dual voice coil allows for serial connection of the inputs, requiring only a single cable run to the subwoofer. This 16 ohm solution is advantageous when long cable runs are necessary.



1. Connect the positive (+) terminals to the L red terminal, and the negative (-) to the R black terminal.
2. Establish a serial connection between the L and R inputs as illustrated in the diagram

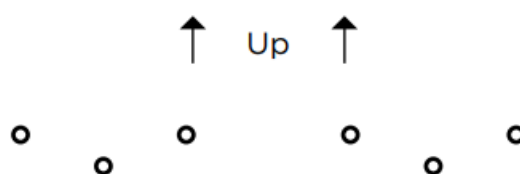
Note: The output on the PowerZone™ Connect amplifier shall be set to 100 V using two (2) outputs as shown in amplifier manual.

Positioning the cabinet

C8S is designed to be mounted on the wall with the woofers facing inwards. It is also possible to have it standing with the woofers facing down towards the floor.

For installation on wall

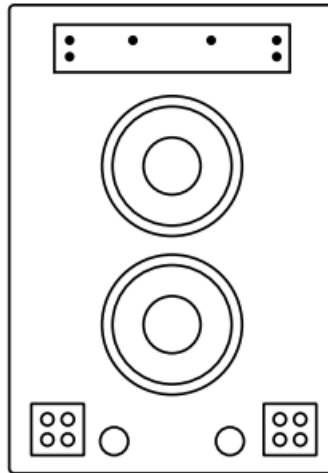
1. Mark screw holes for wall bracket using the provided template.



2. Mount the included wall bracket to the wall with the included screws.



3. After the speaker cables are mounted to the terminals, hang the C8S in the bracket.



Speaker presets

Recommended loudspeaker presets are available at blaze-audio.com/support and are designed for use with Blaze Audio's PowerZone™ Connect DSP-enabled amplifier series.

Recommended amplifier

The C8S Subwoofer has a high minimum impedance, making it an easy load for amplifiers. We recommend using Blaze Audio's PowerZone™ Connect DSP-enabled amplifiers with power ratings that exceed the subwoofers' power handling capacity (see specifications). As with all loudspeaker systems, power handling depends on the quality and size of the amplifier. If the amplifier is overdriven and runs into clipping, the drivers can be damaged, even if the amplifier's output is lower than the speaker's power handling capacity. When selecting an amplifier, keep in mind that a higher-power amplifier operating without distortion will typically sound better and cause less damage to the loudspeaker than a lower power amplifier that is constantly clipping.

Cables

Speaker cables present the amplifier with different loads. Cables with high capacitance, high inductance, and high impedance have a strong negative influence on sound quality as well as amplifier reliability. In order to get the most out of the speaker system, avoid using thin speaker cables. As a rule of thumb, 2 mm² (14 AWG) cable can be used for lengths up to 20 meters. 4 mm² (11 AWG) cable should be used for lengths over 20 meters. For lengths over 50 meters, most amplifiers will become unstable and sound quality is reduced significantly. To minimize power loss and response variations, please refer to the following table for guidance, showing the maximum recommended cable length relative to impedance and cable thickness:

Cable size/load	8 Ω	4 Ω	2 Ω
2 sq mm.	20 m / 65 ft.	10 m /32 ft.	5 m / 16 ft.
2,5 sq mm.	30 m / 100 ft.	15 m /50 ft.	7,5 m / 25ft.
4 sq mm.	60 m /200 ft.	30 m /100 ft.	15 m / 50 ft.

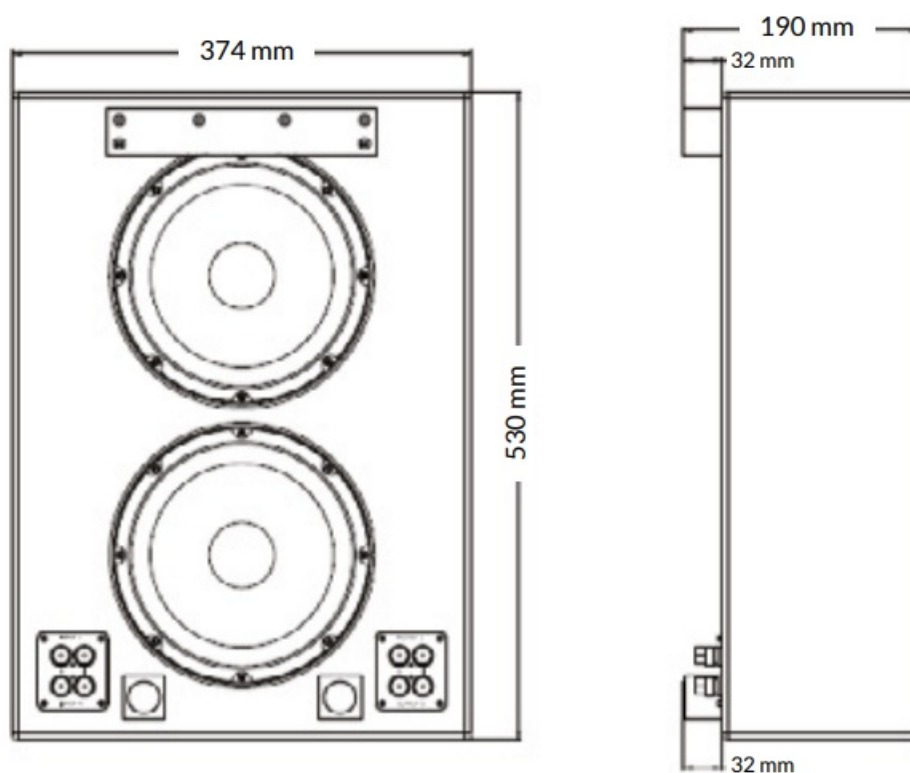
Warranty

For warranty information, please refer to your local Blaze Audio distributor or dealer, or contact us directly.

Service

Spare parts for your Blaze Audio speakers are available through your local Blaze Audio distributor or dealer. Please contact us directly, in case you are not able to source spare parts locally.

Specifications



- **Sensitivity SPL / 1W @ 1m:** 88 dB
- **Maximum SPL, Long Term:** 108 dB
- **Maximum SPL, Peak:** 114 dB
- **Frequency response:** 30-240 Hz
- **Nominal impedance:** 8 Ω
- **Ingress Protection:** Indoor use only
- **Recommended amplifier:** 50-150 W into 8 Ω
- **Measurements with wall mount:** 530 x 374 x 190 mm (20.87 x 14.72 x 7.48 in)
- **Weight:** 10,7 kg (23.59 lb)
- **Colour:** Matt White (RAL9010) Matt Black (RAL9005)

Contents of the manual are subject to change without notice. Blaze Audio does not accept any liability for loss or damage caused or alleged to be caused directly or indirectly by these instructions.

- Blaze Audio HQ, Pascal A/S, Ellekaer 6, DK-2730 Herlev, Denmark.
- hello@blaze-audio.com
- Blaze Audio Americas, Pascal Inc., [888-500-0109](tel:888-500-0109),
- help@blaze-audio.com
- blaze-audio.com

Product Usage Instructions

Option 1: Stereo Mode 8 ohm

1. Connect the positive (+) terminals from each amplifier output to the red terminals on the subwoofer.
2. Connect the negative (-) terminals from each amplifier output to the black input terminals on the C8S.
3. Connect L red (+) from the subwoofer output terminal to the red (+) input on your left speaker, and L black (-) to the black (-) terminal on your left speaker.
4. Similarly, connect R red (+) on the subwoofer output terminal to the red (+) input on your right speaker, and R black (-) to the black (-) terminal on your right speaker.

Option 2: Dual Mono Sum 4 ohm

1. Connect the positive (+) terminals from the amplifier output to the red terminals on the subwoofer.
2. Connect the negative (-) terminals from the amplifier output to the black input terminals on the C8S.
3. Establish a parallel connection between the L and R inputs as illustrated in the diagram.

Option 3: Dual Mono Sum 16 ohm

1. Connect the positive (+) terminals to the L red terminal, and the negative (-) to the R black terminal.
2. Establish a serial connection between the L and R inputs as illustrated in the diagram.

Frequently Asked Questions

Q: Can I use the C8S Subwoofer with any amplifier?

A: While you can use other amplifiers, we recommend using our PowerZone™ Connect series for seamless integration and optimal performance.

Q: What is the purpose of the dual voice coil in the C8S Subwoofer?

A: The dual voice coil allows for different connection options, such as parallel or serial connections, providing flexibility in setup configurations.

Q: What is the advantage of using Option 2 (Dual Mono Sum 4 ohm) over Option 3 (Dual Mono Sum 16 ohm)?

A: Option 2 is ideal for shorter cable runs, while Option 3 is more suitable for longer cable runs due to its higher impedance.

Documents / Resources

<div>BLAZE</div> <div>C8S Subwoofer Installation Manual</div> <div>Ci series by Blaze Audio</div>	<div>BLAZE C8S Subwoofer [pdf] Installation Guide</div> <div>C8S Subwoofer, C8S, Subwoofer</div>
---	--

References

- [📄 Pro audio solutions - Blaze Audio | Pro Audio Solutions for Commercial Installations](#)
- [User Manual](#)

[Manuals+](#), [Privacy Policy](#)

This website is an independent publication and is neither affiliated with nor endorsed by any of the trademark owners. The "Bluetooth®" word mark and logos are registered trademarks owned by Bluetooth SIG, Inc. The "Wi-Fi®" word mark and logos are registered trademarks owned by the Wi-Fi Alliance. Any use of these marks on this website does not imply any affiliation with or endorsement.