



BLAUPUNKT XLf 8120 AD Active Subwoofer with DSP Instruction Manual

[Home](#) » [Blaupunkt](#) » **BLAUPUNKT XLf 8120 AD Active Subwoofer with DSP Instruction Manual** 

Contents

- 1 [BLAUPUNKT XLf 8120 AD Active Subwoofer with DSP](#)
- 2 [INTRODUCTION](#)
- 3 [INPUT FUNCTION](#)
- 4 [INSTALLATION](#)
- 5 [WIRING DIAGRAM](#)
- 6 [SPECIFICATION](#)
- 7 [SOFTWARE OPERATION \(WINDOWS\)](#)
- 8 [SOFTWARE OPERATION \(MOBILE APPLICATION\)](#)
- 9 [TROUBLESHOOTING](#)
- 10 [Documents / Resources](#)
 - 10.1 [References](#)
- 11 [Related Posts](#)



BLAUPUNKT XLf 8120 AD Active Subwoofer with DSP



INTRODUCTION

This device has been manufactured according to established safety guidelines. However, dangers may still occur if the safety notes in this manual is not observed. This manual is intended to familiarize the user with the device's important functions. Read this carefully, prior to using the car radio. Keep this manual in an easily accessible location. In addition, do observe the instructions of other devices used in conjunction with this device.

Installation Safety Notes

Always observe the following safety notes:

- Device must be used in a way that compliments safety of the user when driving the vehicle. It is recommended for the user to install at an ap-proprate location when operating the device. While driving, user is not recommended to use applications that can be prone to distraction. Before installation, disconnect the negative ter-minal of the battery. Refer to the safety vechicle manufacturer's user manual.
- Ensure positions of the holes are nowhere near the vehicle component to avoid any damage during drilling.
- Ensure corss section of the cables i no less than 2.5mm if the positive and the negative cables are too long. incorrect installation may result in malfunction of the device or the car sound system.
- Select a dry and well-ventilated location to install the device.
- The device must not be installed in overly exposed location.
- The installation location must be suitable for screw holes and stable ground support

General Safety Notes:

Observe the following for protection against injuries: • User is advised to keep the volume of the car radio to a moderate level for the protection of the ears and to increase the ability to hear any emergency warning signals (e.g. police and ambulance sirens). Do not increase the car radio volume while the car radio is muted as it is not audible. The car radio volume can be too loud when the car radio is unmuted.

Disclaimer

- Blaupunkt is not liable for any loss or damage caused or resulting from unauthorized disassem-bly or

modification to the product.

- In no event shall Blaupunkt be liable for any direct, indirect, punitive, incidental, special consequential damages, to property or life, improper storage, whatsoever arising out of or connected with the use or misuse of our products.
- USA & CANADA : Products not intended for sales in the United States and Canada. If purchased in the U.S. or Canada, this product is purchased as-is. No warranty, expressed or implied is provided in the U.S. and Canada.

Voltage Supply

- +12V : Positive connection terminal for car 12V power supply.
- GND : Power supply negative connection terminal.
- Firmly and carefully connect the ground lead to a bare metal point on the vehicle chassis.
- Operation temperature : 0° – 70°

Compatible PC OS

PC – with or higher than Windows XP

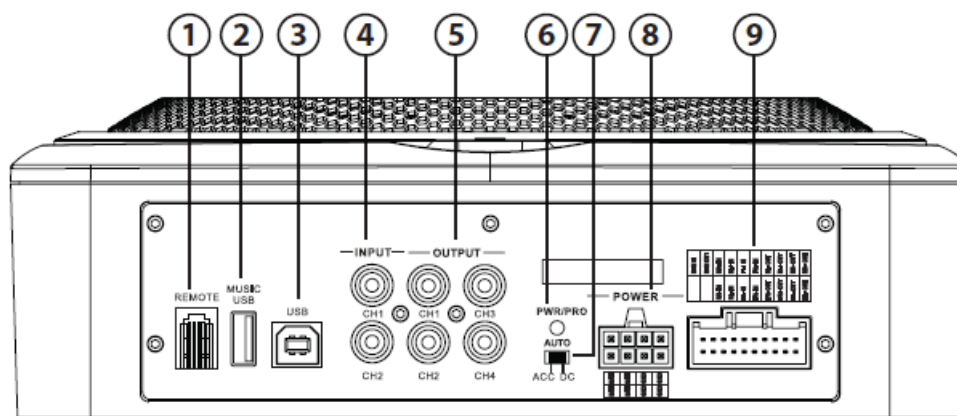
Scope of Delivery

- Active Subwoofer with DSP (330 x 240 x 73mm)
- 3.0m Wired Remote Controller
- 1.5m USB Cable
- 4 x Screws (Parker-Type) : 4 x 20mm
- 8 x Screws (M-Type) : 3 x 6mm
- 4 x Mounting Bracket A : 46mm x 22mm
- 1x Power Cable
- 1x High Level Input Cable

Disposal Notes

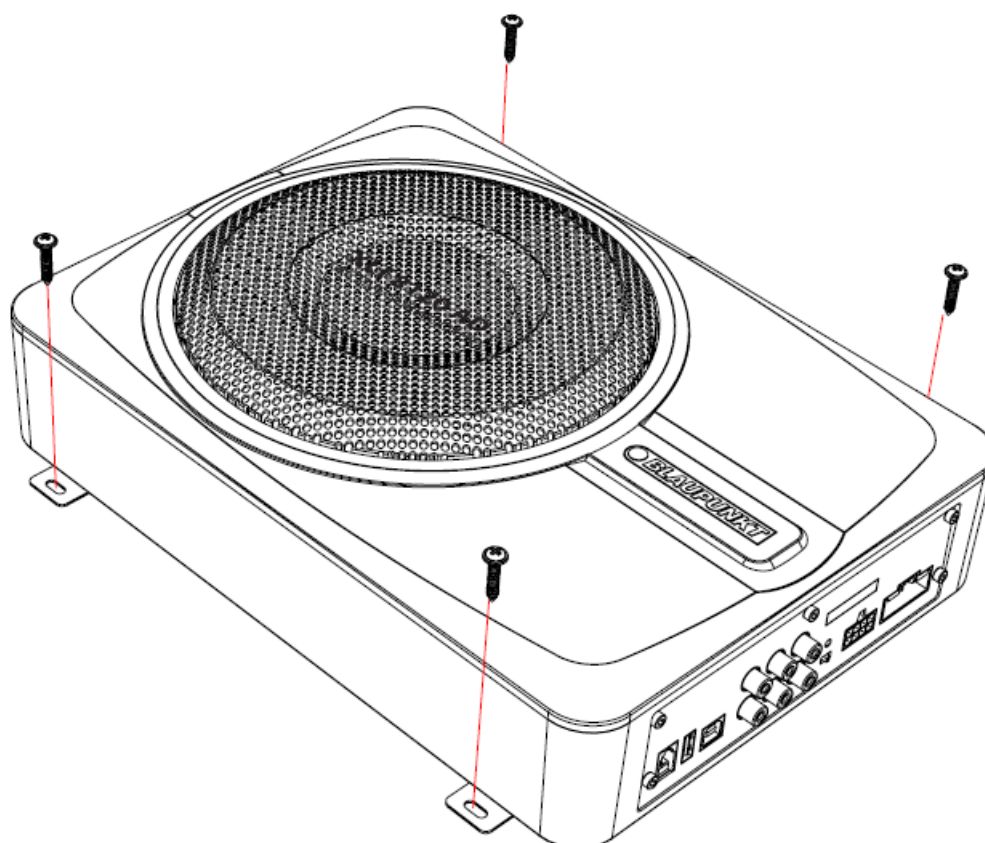
Do not dispose of your old unit in the household trash!
Use the return and collection systems available to dispose of the old device.

INPUT FUNCTION



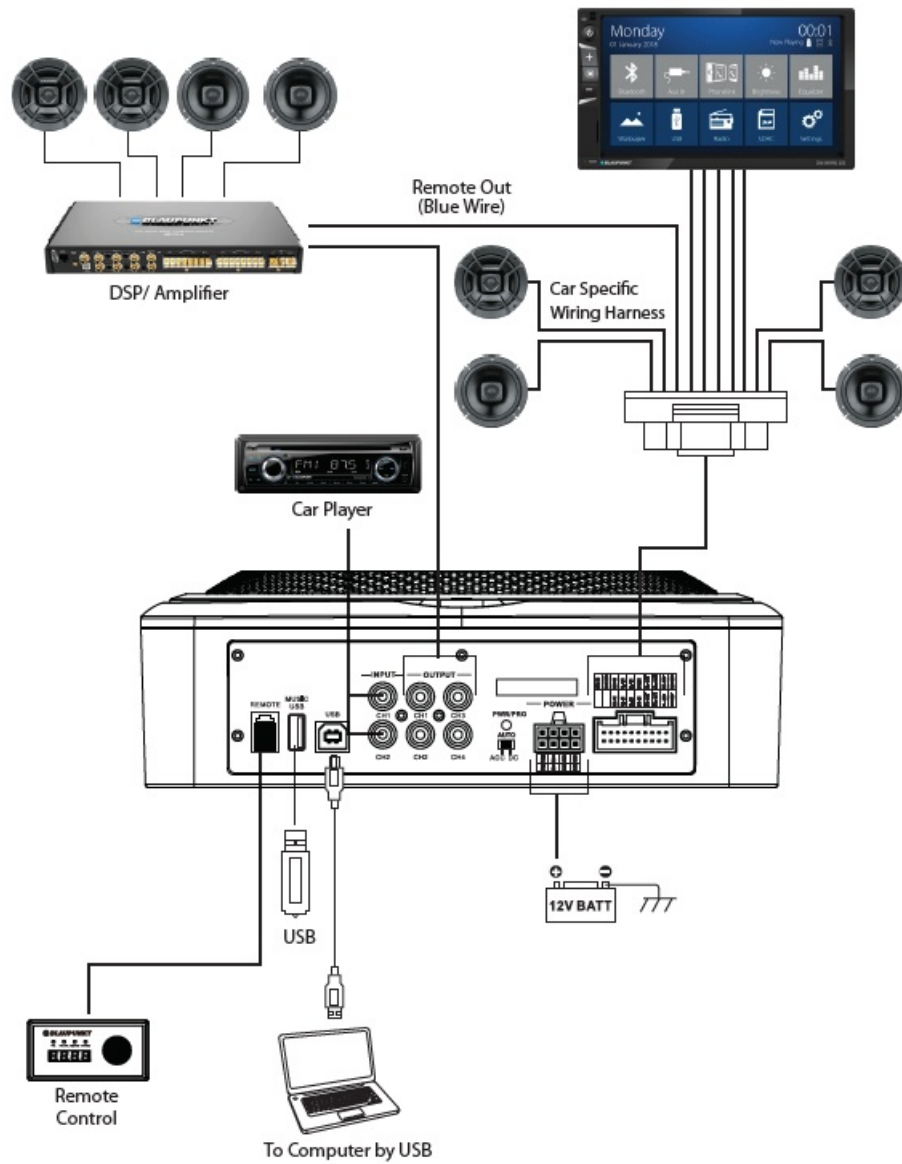
1. Remote Control Input
2. USB Player
3. USB2.0 Port
4. Low Level RCA Input
5. Low Level RCA Output
6. Power & Protection LED
7. ACC/DC Convertor
8. Power Input
9. Hi Level Input/ Speaker Output/ Remote In/ Remote Out

INSTALLATION

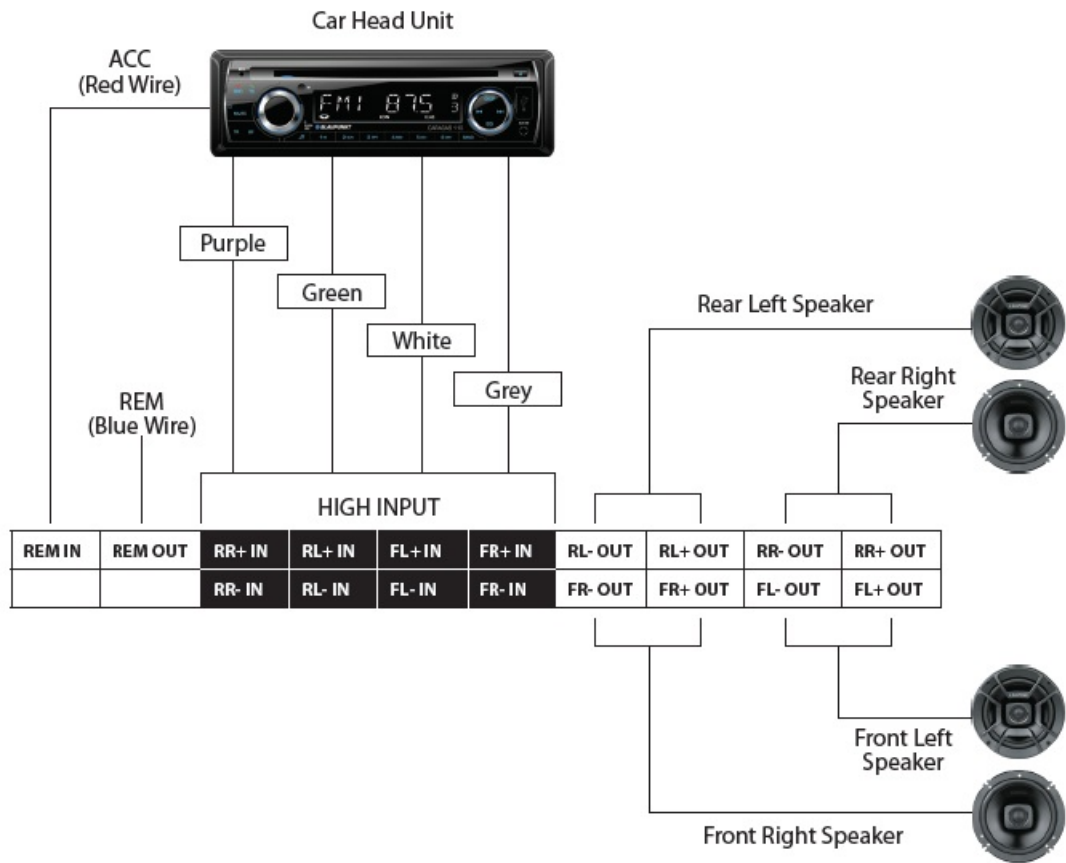


WIRING DIAGRAM

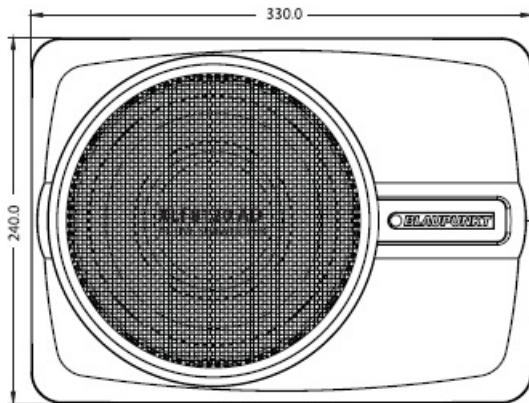
Car Specific Wiring Method



Universal Wiring Method



SPECIFICATION



Audio

- DSP RMS Power : 35Wx4(4Ω), 50Wx4(2Ω)
- DSP Resolution : 24 Bit
- DSP Output Power RMS @ 4 Ohms (≤1% THD +N) : 4x35W
- DSP Output Power RMS @ 2 Ohms (≤1% THD +N) : 4x50W
- Active Subwoofer RMS Power : 200W
- Active Subwoofer Output Power RMS @ 2 Ohms (≤1% THD +N) : 120W
- Distortion (THD) : <0.005%
- Operating Voltage : 10 -14.4V

- Sampling Rate : 48KHz/24Bit
- Signal Converter A/D : AKM5358
- Signal Converter D/A : Cirrus Logic CS4344

Input

- 2 x RCA/ Aux-in
- 4 High Level Speaker Input
- 1 x Remote-in
- 1 x USB
- RCA/ Cinch Sensitivity : 300mV
- High Level Input Sensitivity : 2.5V
- Impedence High Level : 240 Ohms
- S/N Ratio Analog-in : $\geq 100\text{dB}$

Output

- 4 x RCA/ Cinch
- 4 High Level Speaker Output
- 1 x Remote-out
- Voltage RCA/ Cinch : 4V RMS

Feature

- Class AB Amplifier
- 15-Band Equalizer/ Phase & Time Aligment Setting
- PC Tuner Software & Mobile Application Built-in BT
- Max. Output Power : 300W
- Frequency Response : 20Hz-20kHz
- Dimension (W x H x D) : 330 x 240 x 73mm
- Weight : 4.1 kg

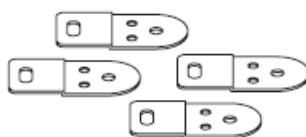
Accessories



4x Tapping Screws
(4x20mm)



8x Machine Screws
(3x6mm)



4x Mounting Bracket
(46x22x2mm)



1x Wired Remote Control



1.5m USB Cable



1x Power Cable



1x High Level Input Cable

SOFTWARE OPERATION (WINDOWS)

Blaupunkt XLf 8120 AD Software

Visit www.blaupunkt.com/ase to download the software



XLf 8120 AD.exe

Car entertainment enthusiast / experts may now begin to tune signal details. Enhance the sound effect according to your very own preference for optimum music enjoyment with the DSP software.



Channel Panel (15-band Tuning)

1. 15-Band Tuning Waveform



2. 15-band Equalizer Control



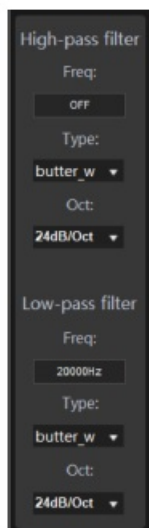
3. 6-Channel Control



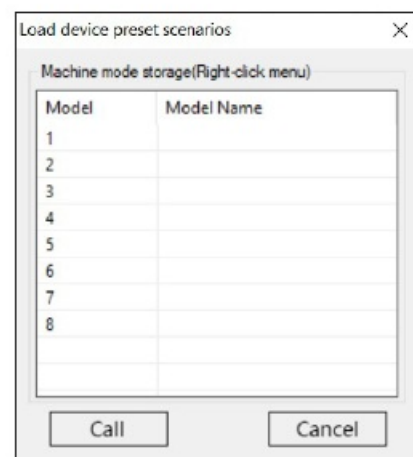
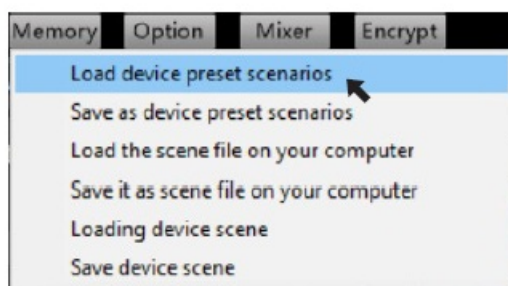
4. Main Volume Control



- ### 5. Crossover Frequency Setting :
- 3 Types of High-pass Frequency
 - 3 Types of Low-pass Frequency



- ### 6. Memory
- 8 Presets



SOFTWARE OPERATION (MOBILE APPLICATION)

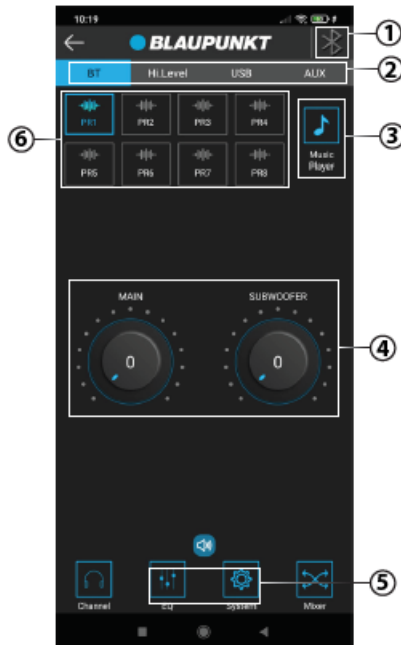
Mobile Application

- Download "Blaupunkt XLf 8120 AD" App from Google Play (Android) or App Store (iOS).



Blaupunkt XLf 8120 AD

Main Interface

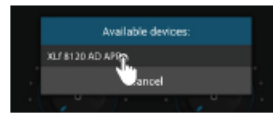


1. BT Connection

- Click on the BT icon to turn on the BT.

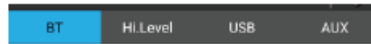


- Click on the available device & connect to "XLF 8120 AD APP".



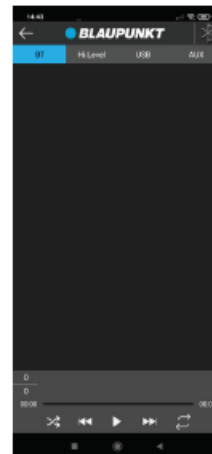
2. Input Sources

- Click on preferable input source



3. Music Player

- Click on the Music Player icon to enter music player interface.



4. Adjustment of Main Volume/ Subwoofer Volume

- Adjust the main volume/ subwoofer volume by clicking on the scale clockwise or counterclockwise.



5. Advanced

- Click on Advanced & enter the password "888888".

- Enter Advanced interface.

a
b
c
d

a. Channel Interface

b. EQ Interface

c. System Interface

d. Mixer Interface

6. Memory

- 8 Presets


TROUBLESHOOTING

If any of the following problem occur, please resort to Troubleshooting for the possible solutions. Consult Blaupunkt authorized dealer if problem persist.

Problem	Solution
Active subwoofer power up failure	Examine if the ground connection is intact.
	Examine if remote input has at least 5V DC.
	Examine if battery power is connected correctly to the + terminal.
	Ensure supplied voltage is minimum 12V.
	Examine if fuse is broken and replace if necessary.
	Restart the device if protection LED light is on.
	Examine fuses and replace if necessary.
	Examine ground connection is intact.

No sound output	Examine if remote input has at least 5V DC.
	Examine if RCA audio cables are connected to the right inputs.
	Examine if speaker wiring is intact.
Low sound output	Reset Level Control
	Examine the Crossover Control setting.
Buzzing noise	Observe if the device is still producing noise after turning on and off the amplifier. If yes, examine if the cables are correctly connected and if the cables and radio are in good condition.
	Repair or replace if the cables or the radio are not in good condition.
Squealing noise interference	Ensure RCA connections are properly connected.
Distorted sound output	Ensure input level of the device matches the signal level of the head unit.
	Always set the input level to the lowest.
	Examine if crossover frequency is set correctly.
	Examine if speaker wire had short-circuit.
Active subwoofer temperature increased	Examine the minimum speaker impedance for the amp models is correct.
	Ensure good air ventilation around the device. Add external cooling fan if necessary.
Engine noise (static sound) interference	Usually caused by poor RCA cable quality, which release noise. Use only the best quality cables, and route them away from power cables.
Engine noise (alternator whine) interference	Examine if RCA cable are nowhere near or attached to the vehicle chassis.
	Examine if head unit is properly connected to the wires.

Documents / Resources

 <p>BLAUPUNKT ACTIVE SUBWOOFER with DSP XLF 8120 AD</p> <p>Enjoy it!</p> <p>Operating and Installation Instructions</p>	<p>BLAUPUNKT XLF 8120 AD Active Subwoofer with DSP [pdf] Instruction Manual XLF 8120 AD, Active Subwoofer with DSP, XLF 8120 AD Active Subwoofer with DSP</p>
--	---

References

- [● Home - Blaupunkt](#)

Manuals+.