



## BLAUPUNKT TPMS Multi-Color Solar Powered Display Instruction Manual

[Home](#) » [Blaupunkt](#) » BLAUPUNKT TPMS Multi-Color Solar Powered Display Instruction Manual 



TPMS Multi-Color Solar Powered Display  
Instruction Manual

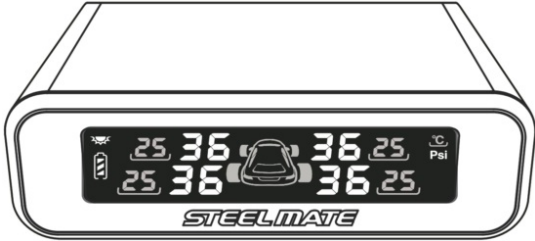
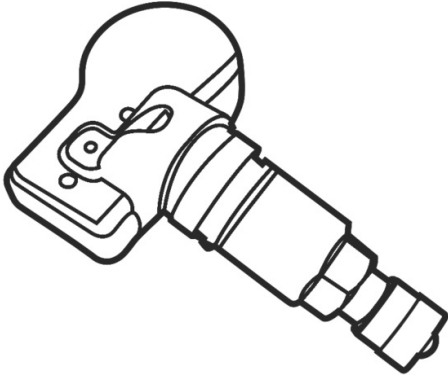
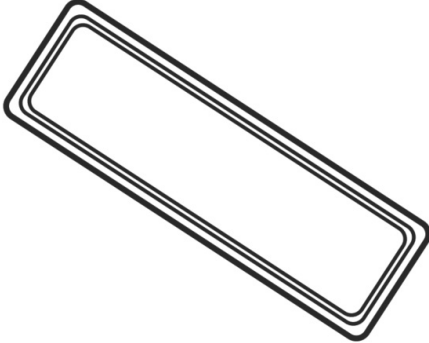
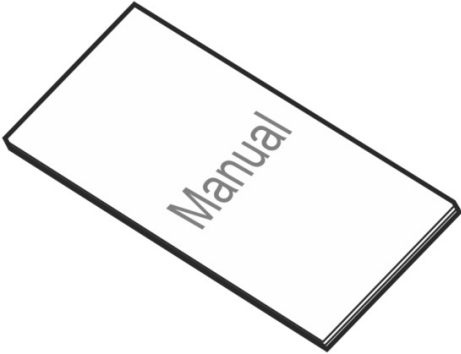
TYRE PRESSURE MONITORING SYSTEM



## Contents

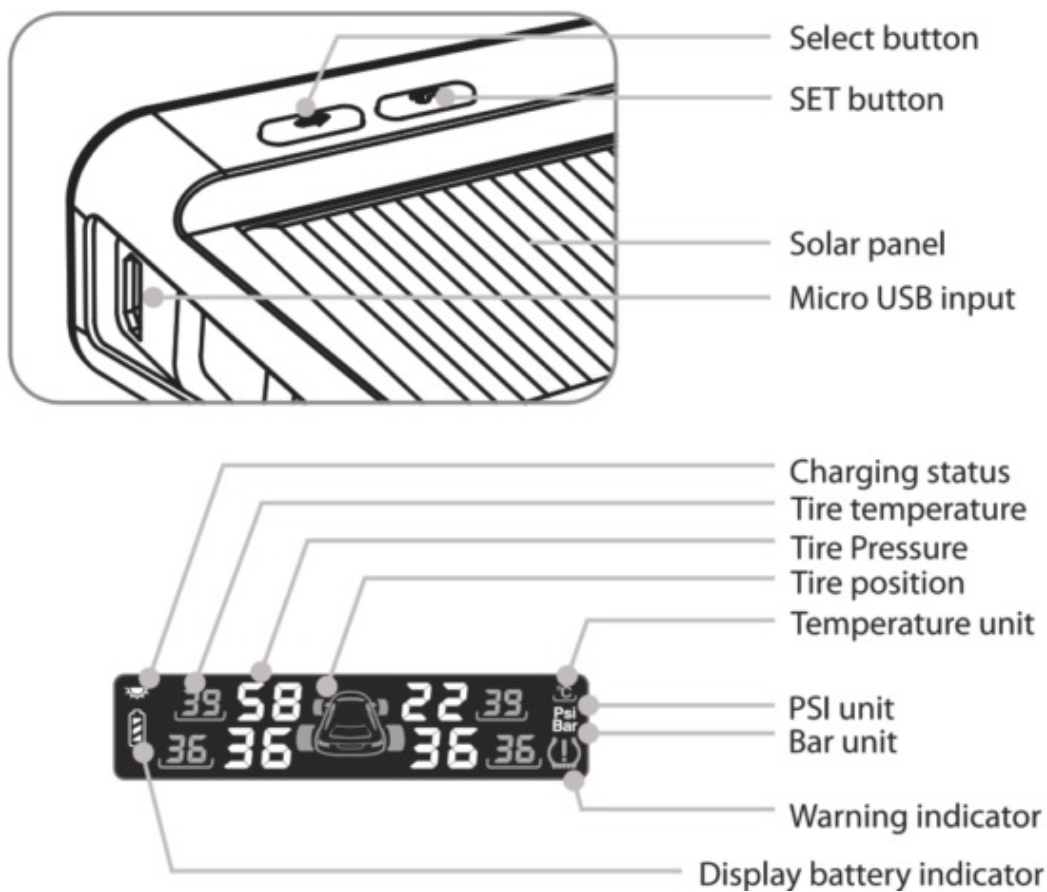
- [1 Includes](#)
- [2 Brief Look](#)
- [3 Display Installation](#)
- [4 About TPMS sensor](#)
- [5 Sensor Installation](#)
- [6 Sensor programming: \(Reminder: All sensors are pre-programmed\)](#)
- [7 Functional test after installation](#)
- [8 Different Scenarios](#)
- [9 Parameter Setting](#)
- [10 Specifications](#)
- [11 Disclaimer](#)
- [12 Notes](#)
- [13 Troubleshooting](#)
- [14 Warranty](#)
- [15 Documents / Resources](#)
- [16 Related Posts](#)

## Includes

Display X1	
Sensor X4	
Anti-slip mat X1	
Manual X1	

\*The above graphics are for reference only

**Brief Look**

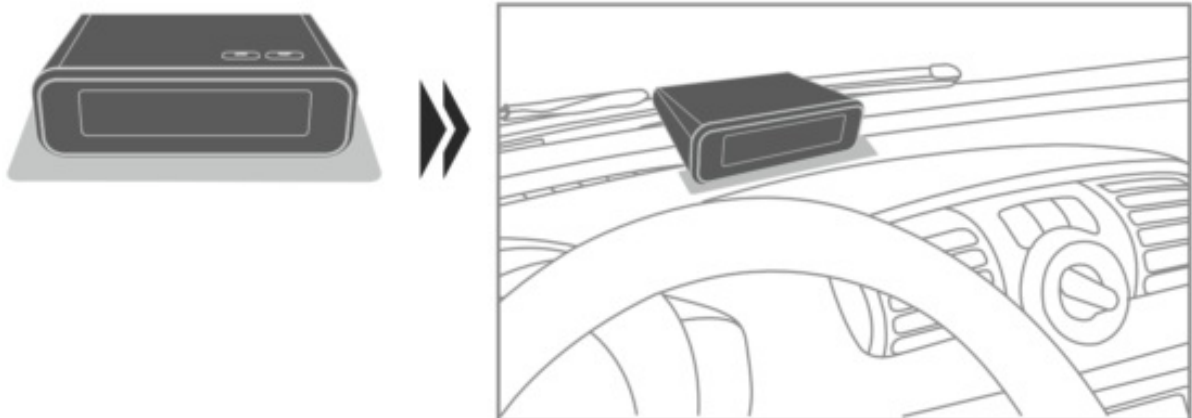


Note:

- Hold "↔" for 3 seconds to turn ON / OFF the display
- Hold "↔" + "+" for 3 seconds to reset

## Display Installation

### 1. Installation position

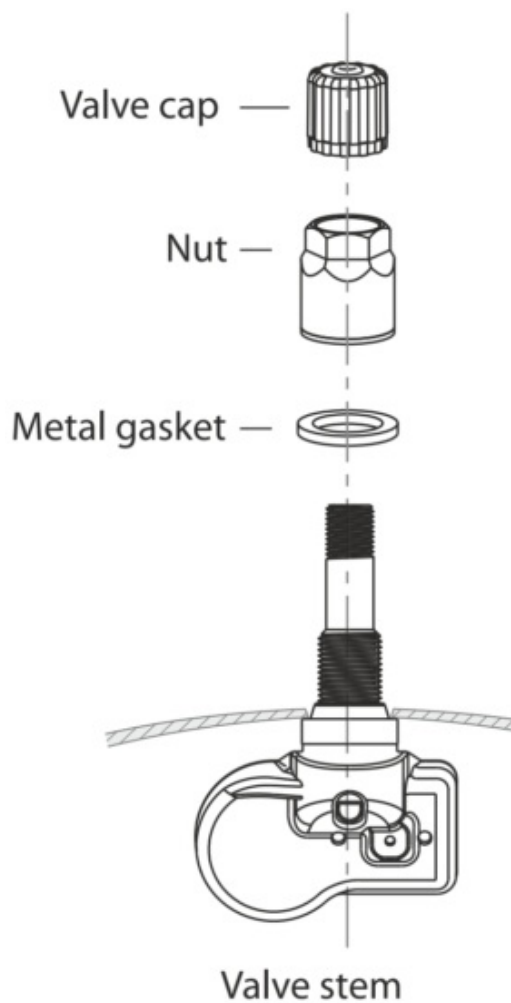


- Place the anti-slip mat under the display

### 2. USB charging connection

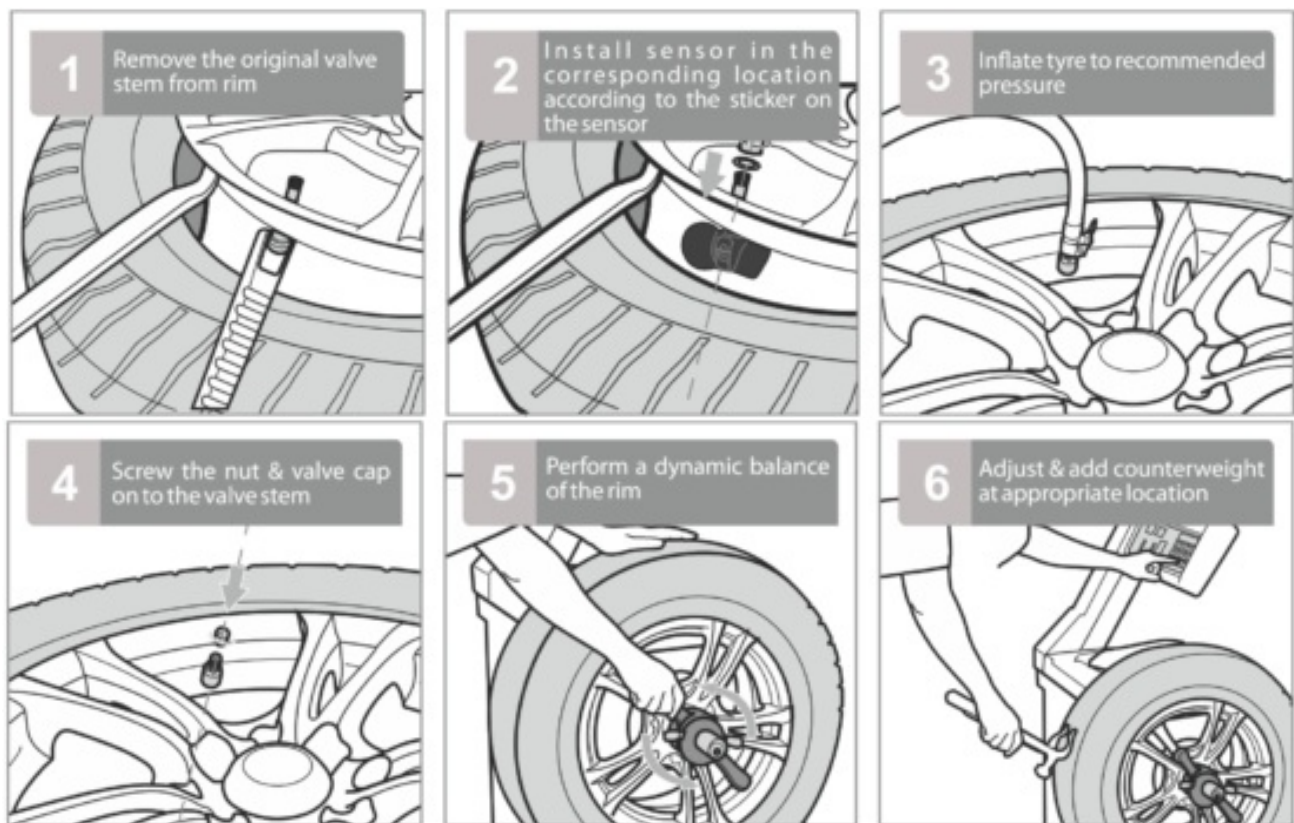


## About TPMS sensor

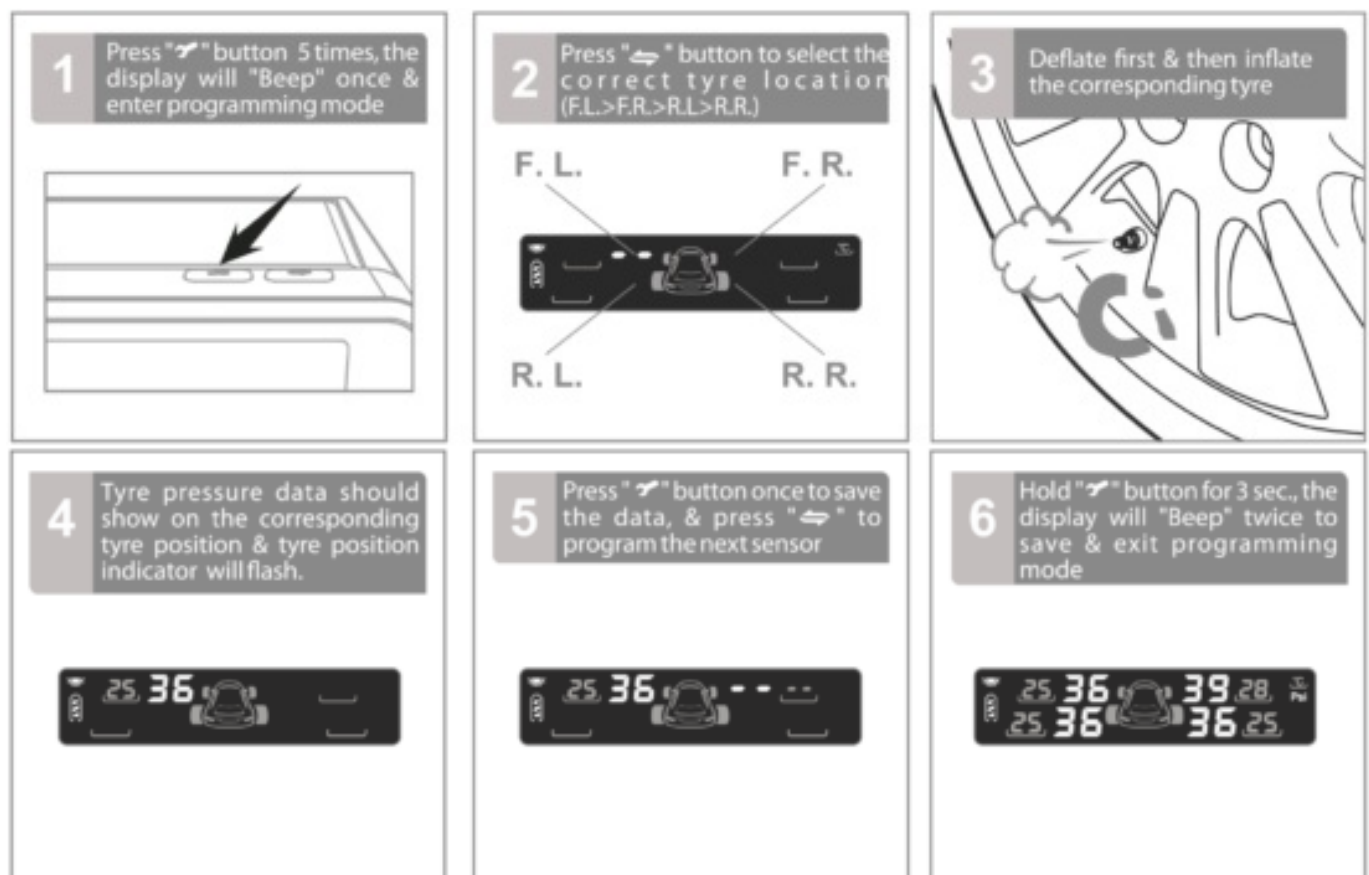


**Note:** The metal gasket, nut, and valve cap are to be installed on the exterior valve stem.

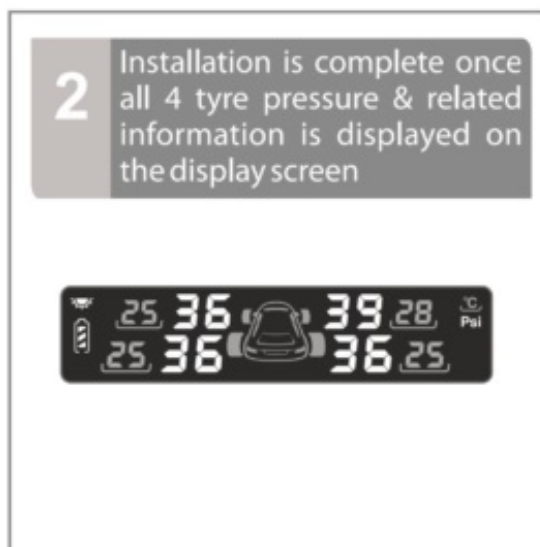
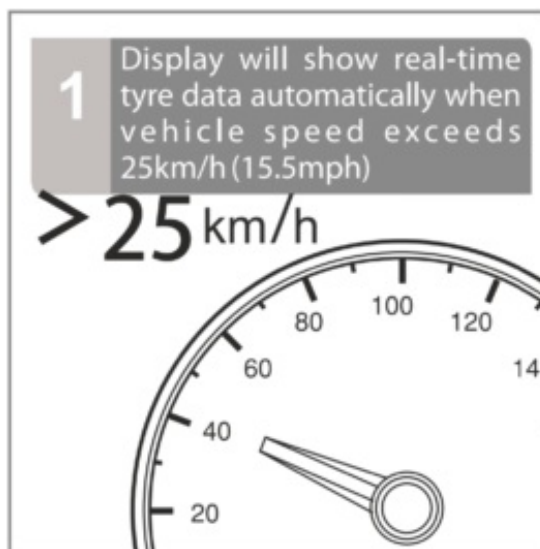
## Sensor Installation



**Sensor programming: (Reminder: All sensors are pre-programmed)**



**Functional test after installation**

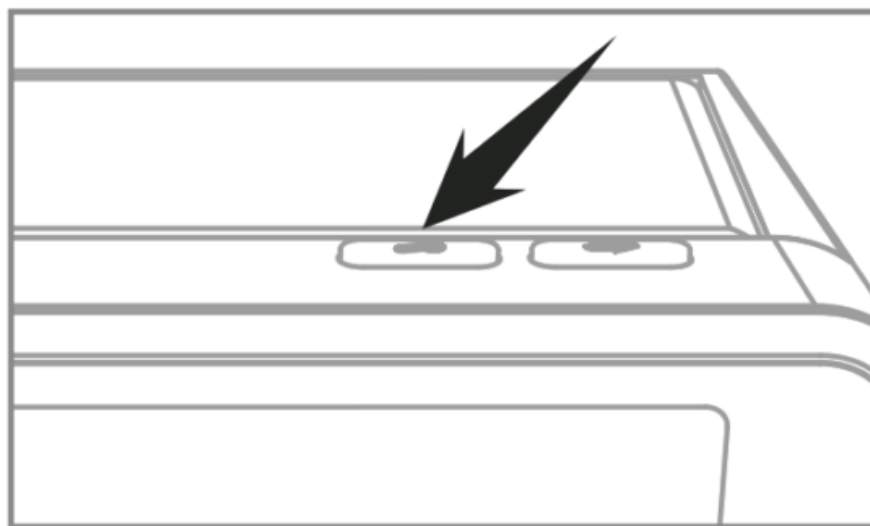


## Different Scenarios

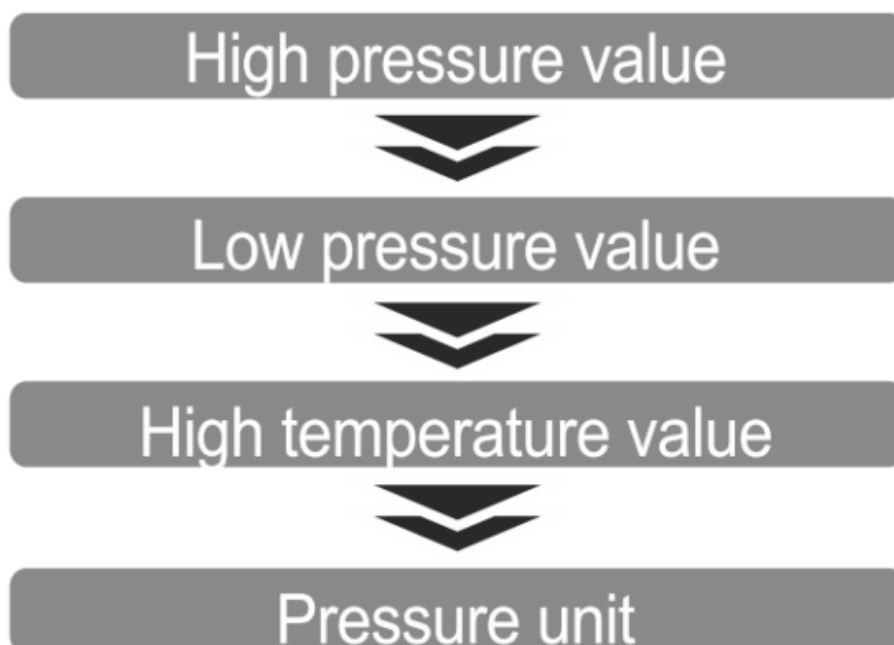


## Parameter Setting

1. Hold the "🔑" button for 4 seconds, the display will "Beep" once & entertain mode



## 2. Setting mode sequence



3. Press the "↔" button to select the high-pressure value. Press the "⚙️" button again to save & proceed to the next setting



4. Press the "↔" button to select a low-pressure value. Press the "⚙️" button again to save & proceed to the next setting



5. Press the "↔" button to select a high-temperature value. Press the "⚙️" button again to save & proceed to the next setting





6. Press the “↔” button to select the preferred choice of pressure indicator- PSI / BAR Press the “🔧” button again to save & proceed to the next setting.



7. Hold the “🔧” button for 4 secs., the display will “Beep” twice to save & exit setting mode



## Specifications

Sensor:	
Operating frequency:	433.92 ± 0.015MHz
Operating voltage:	2.0-3.6V
Operating temp:	-30°C-+105°C/ -22°F-+221 °F
Pressure range:	0-8Bar/ 0-116PSI

<b>Display:</b>	
Operating frequency:	433.92 ± 0.015MHz
Operating voltage:	2.6-3.6V
Operating current:	≤ 55mA
Static current:	≤ 100uA
USB charging current:	≤ 70mA
Operating temperature:	-20°C~+70°C -4°F+158°F
Solar charging current:	≤ 15mA (at 5500L 25°C)
Charging temperature:	-1 0°C ~ + 6 5°C / +14°F~+149°F
Built-in battery capacity:	3.2V/250mA
(*Maximum display tire pressure is 99PSI)	

<b>Adjustable value range:</b>	
High-pressure value:	2.6~6.0Bar/ 37~86PSI
Low-pressure value:	0.9~3.9Bar / 13~55PSI
High temperature value:	70~90°C/158~194°F

<b>Default value:</b>	
High-pressure value:	3.3Bar/47PSI
Low-pressure value:	1.7Bar/24PSI
High temperature:	80°C/ 176°F

<b>Precision:</b>	
Pressure:	±0.1 Bar / ±2PSI
Temperature:	±3°C/±5°F

#### Air pressure unit:

1 Bar = 14.5 PSI = 100K Pa =1.02 Kg/cm<sup>2</sup>

#### Disclaimer

- Tyre Pressure Monitoring System (TPMS) is designed for monitoring tire-related irregularities. The driver is responsible to maintain and inspect tires regularly
- The driver should react promptly once the device indicates a warning or alert
- Blaupunkt does not guarantee or assume liability for the loss of sensors

## Notes

- This system is suitable for different vehicles with recommended tire pressure within 6.0Bar/87PSI.
- All sensors in this unit have been pre-set individually for each tire at the factory.
- Whenever the location of the tire changes, the sensors must be re-programmed to the corresponding tire location.
- The display will turn off after the vehicle is turned OFF.
- The battery life of the sensor depends on the mileage driven.
- The solar-powered display is placed in temperatures exceeding 70°C (or 158°F) for extended periods, and the capacity of the built-in battery may be compromised
- Should the display not charge while in sunlight and the case of the display is warped, this indicates that the built-in battery is damaged
- Discharge and charge solar-powered display fully every 6 months to preserve battery life.
- Please store between -20°C to +70°C (-4°F to +158°F). Charge between -10°C to +65°C (+14°F to +149°F).
- Do not expose the battery to high temperatures or direct flame.
- Please keep the display away from wet surfaces & high humidity environments
- Do not disassemble or tamper with the battery in the display
- \*Tighten the nut on the valve stem slowly up to 4.0Nm (±0.5) torque setting

## Troubleshooting

### 1. After the installation, there is no tire data on the display

- The sensors are not paired to the display, please reprogram the sensors.
- The display should show the real-time tire pressure and related data automatically when the vehicle speed exceeds 25km/h

### 2. There is no tire data on the display

- The sensors are not paired to the display, please reprogram it
- There is a problem with the sensor

### 3. The system indicates a problem when there is “—” appears on the display occasionally

- The signal that is transmitted from the sensor to the display is an RF signal and is much like a cell phone signal. The FCC requires to allow all other RF signals to interfere with the system signals and this can cause the display to interrupt the receipt of information from the sensors. If this persists then there could be a damaged sensor or the battery in the sensor could be weak and needs to be replaced.

## Warranty

### Warranty:

Your Blaupunkt Tyre Inflator is fully guaranteed against manufacturing defects or material defects for the period of **12 (Twelve) months** from the date of sale, satisfying the terms & conditions given below. Equipment in need of Service should be referred to an authorized Blaupunkt Dealer or Service Center.

### Warranty Terms & Conditions:

- Warranty will be entertained only when this card and the original invoice or sale receipt (as proof of date of purchase, model, serial no. and the dealer's name) are presented together with the product requiring attention.

- Warranty does not cover damage to Blaupunkt item caused by accident, misuse, unauthorized repairs, additions, and modifications carried out by unauthorized dealers or if tampered with in any other manner.
- Warranty will not apply if the type or serial number on the product has been altered, deleted, removed, or made illegible.
- The warranty does not cover periodic maintenance or replacement of parts due to normal wear & tear.
- This warranty does not cover problems due to improper installation and setup adjustment.
- We reserve the right to refuse warranty service if the above terms and conditions are violated.
- The extent of this warranty is limited only up to the value of the Blaupunkt equipment under warranty.
- In case of any legal or other disputes, the same will be under the Courts in Mumbai jurisdiction.

#### **WARRANTY CARD – Tyre Pressure Monitoring System**

**Please demand the below portion is filled by the dealer and given to you.**

**Model: TPMS-SOLAR POWERED**

**Part Number: 1102146SRR-001**

**Date of Purchase:\_\_\_\_\_**

**Dealer's Stamp:\_\_\_\_\_**

#### **BPIN Private Limited**

47, Atlanta Society, Nariman Point  
Mumbai – 400 021. Maharashtra. **India.**

Toll-Free: **1800 209 6820**

[info@blaupunktcar.in](mailto:info@blaupunktcar.in)

Shop Online at [www.blaupunktcar.in](http://www.blaupunktcar.in)

#### **Documents / Resources**



[BLAUPUNKT TPMS Multi-Color Solar Powered Display](#) [pdf] Instruction Manual  
TPMS Multi-Color Solar Powered Display, TPMS, Multi-Color Solar Powered Display