



## BLAUPUNKT Reverse Camera User Manual

[Home](#) » [Blaupunkt](#) » BLAUPUNKT Reverse Camera User Manual 

### Contents

- 1 BLAUPUNKT Reverse Camera
- 2 Operating and Installation Instructions
  - 2.1 Safety Notes
  - 2.2 Attentions
  - 2.3 Disclaimer
- 3 SPECIFICATIONS
- 4 INSTALLATION DIAGRAM
  - 4.1 Attention
- 5 FRONT / REAR CAMERA INSTALLATION
- 6 INSTALLATION LOCATION
  - 6.1 Type 1: Tail Light
  - 6.2 Type 2: Hatch Handle
  - 6.3 Type 3: Car Plate
  - 6.4 After Installation: Adjust Viewing Angle
- 7 TROUBLESHOOTING
- 8 Documents / Resources
- 9 Related Posts



soundphone



## **Operating and Installation Instructions**

### **Safety Notes**

This vehicle security system has been manufactured according to established safety guidelines. However, dangers may still occur if the safety notes in this manual is not observed.

This manual is intended to familiarize the user with the reverse camera important functions. Read this carefully, prior to using the reverse camera. Keep this manual in an easily accessible location. In addition, do observe the instructions of the devices used in conjunction with this reverse camera.

### **Attentions**

- Assign a mounting location that will not obstruct driver in any circumstances. Or cause injuries to drives and passengers in case of emergency brake or accidents.
- Ensure all wires are connected properly, and that the unit is functioning well before fitting the unit into the mount.
- Any unauthorized installation, disassembly or modification may cause malfunction to the unit and void warranty of the unit.
- Always use only the parts that are includ-ed with the units only.
- Do not damage vehicle components when drilling holes for the mount.
- Vehicle may differ from the description provided here. Consult an authorized Blaupunkt dealer or vehicle's manufacturer if the information provided here does not fit your specific installation requirement.
- This unit is applicable for front and reverse camera use. Consult an authorized Blaupunkt dealer during installation.
- Unit does not record video.
- Avoid automatic car wash or high-pressure water to prevent water and pressure from damaging the camera or causing it to fall off.
- Do not install this unit near heater outlet.

This manual may be updated from time to time without any notice.

## Disclaimer

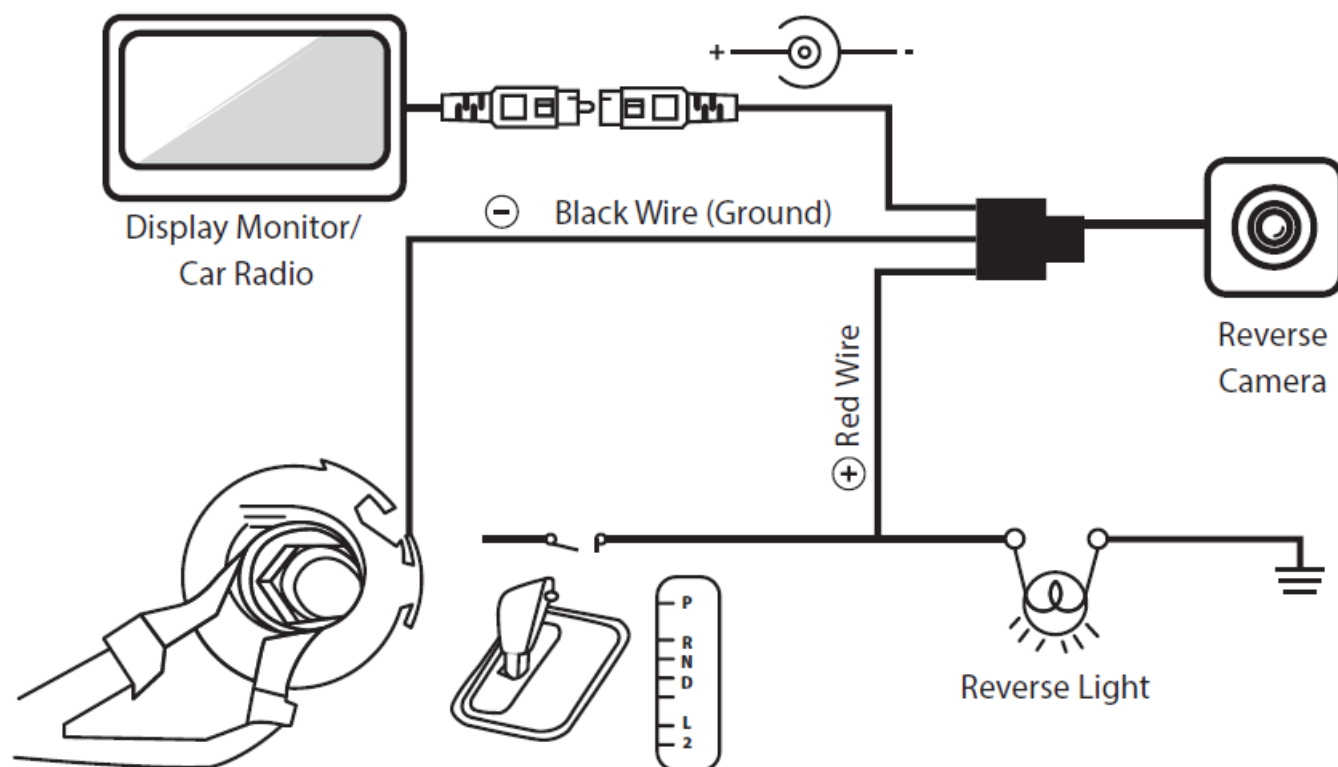
In no event shall Blaupunkt be liable for any direct, indirect, punitive, incidental, special consequential damages to property or life and whatsoever arising out of or connected with the use or misuse of our products. USA & CANADA: This product is not intended for sale in the United States and Canada. If purchased in the U.S. or Canada, this product is purchased on as-is basis. No warranty, whether expressed or implied is provided in the U.S. or Canada.

## SPECIFICATIONS

Features	RC1.0	RC2.0	RC3.0
CMOS Image Sensor	ü	ü	ü
NTSC/PAL TV System	ü	ü	ü
Effective Pixels	720 (H) x 480 (V)	720 (H) x 480 (V)	1280 (H) x 720 (V)
750TVL Image Resolution	ü	ü	ü
25/30 Frame Per Second	ü	ü	ü
Exposure & Gain Control	ü	ü	ü
1/60~1/100000sec Electronic Shutter	ü	ü	ü
Auto White Balance	ü	ü	ü
Illumination Min.	0.2 Lux/F	0.2 Lux/F	0.1 Lux/F
Horizontal View	105°H	145°H	160°H
Vertical View	95°V	125°V	140°V
Diagonal View	170°D	170°D	170°D

DC12V Voltage	ü	ü	ü
Current	29.3mA	27.1mA	61.5mA
DC9-16V Operating Voltage Range	ü	ü	ü
Operating Temperature	-20~+70 °C	-20~+70 °C	-20~+70 °C
Storage Temperature	-30~+75°C	-30~+75°C	-30~+75°C
Protection Grade	IP68	IP68	IP68
RCA/4 PIN DIN	ü	ü	ü
Lens	4glass	4glass	5glass

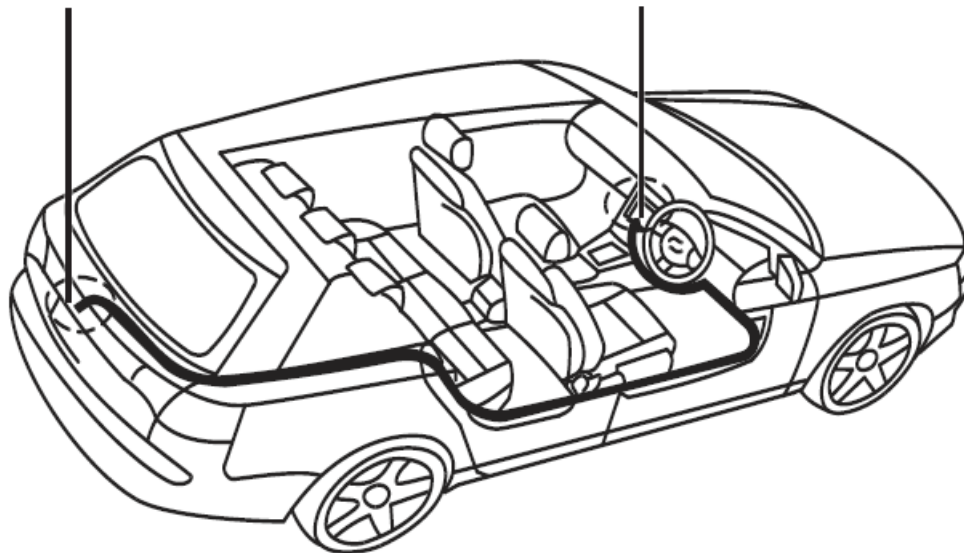
## INSTALLATION DIAGRAM



Ground the wire through the exterior body of the vehicle and keep connection intact.

Reverse Camera

Display Monitor/Car Radio



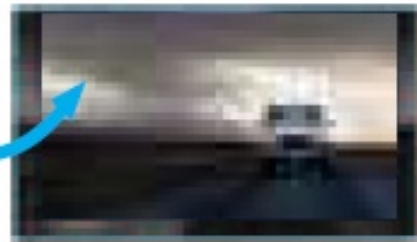
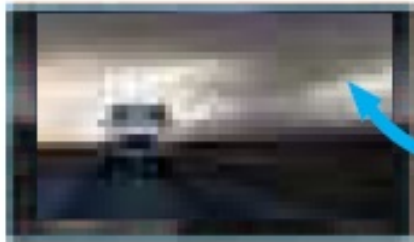
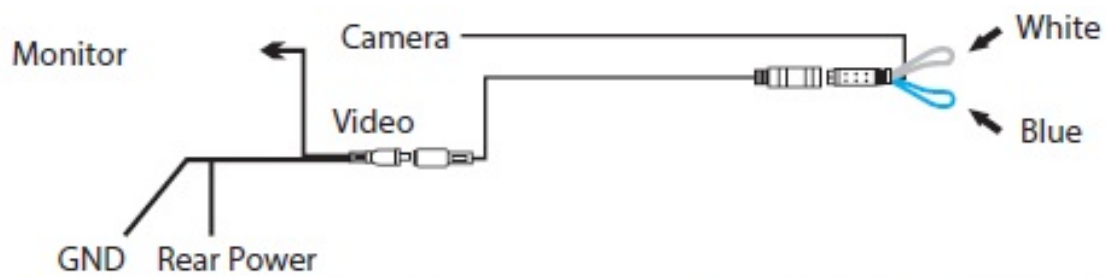
#### **Attention**

- Remove protective film from camera lens before use.
- Take extra precautions when setting up the connection near petrol tank and wires.
- Connect Red Wire with reverse light.

#### **FRONT / REAR CAMERA INSTALLATION**

##### **FRONT/ REAR VIEW DISPLAY & PARKING LINE**

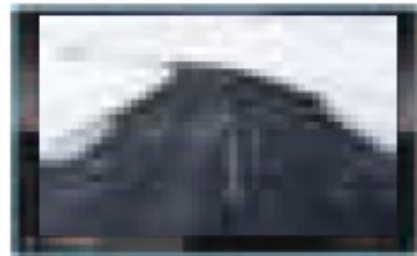
**Applicable for RC 1.0, RC 2.0**



**Reverse Camera**  
Do not cut this wire when using as reverse camera.



**Front Camera**  
Cut this wire when using as front camera to flip viewing display.

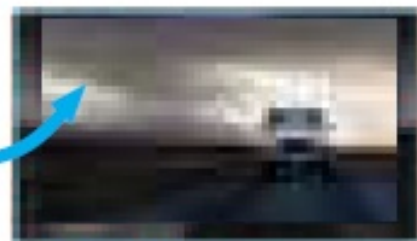
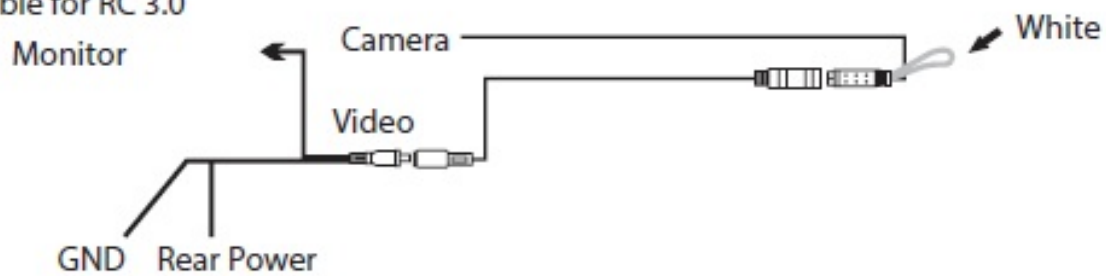


**Reverse Camera**  
Do not cut this wire when using as reverse camera.



**Front Camera**  
Cut this wire when using as front camera to remove parking line.

Applicable for RC 3.0



**For Reverse Camera**



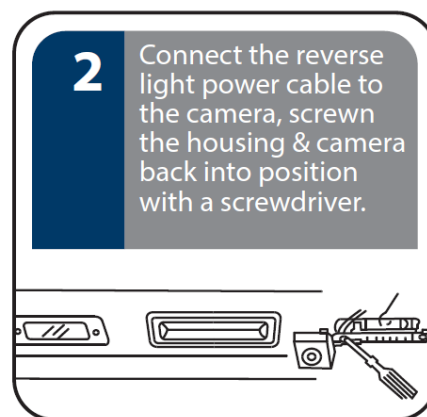
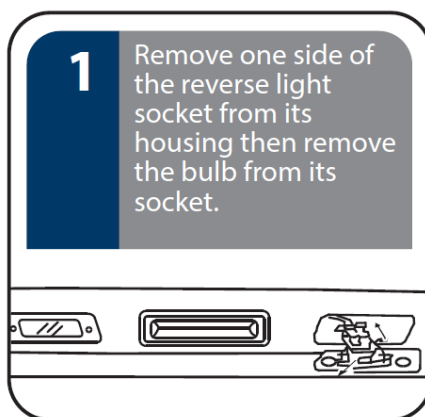
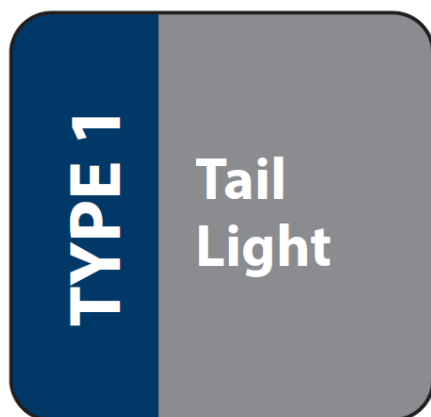
**Front Camera**  
Reconnect this wire when using as front camera to flip viewing display and remove parking line.

4

## INSTALLATION LOCATION

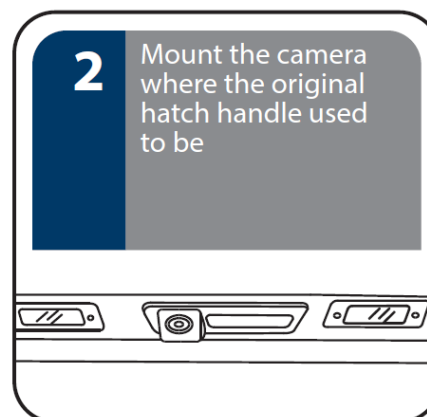
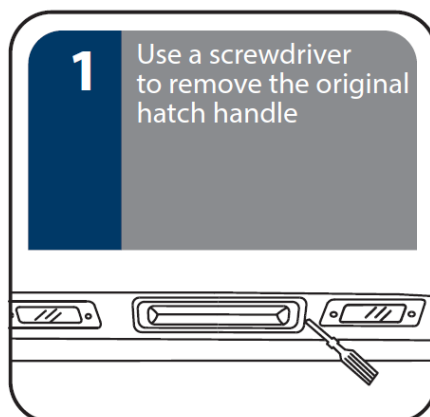
Type 1: Tail Light

1. Remove one side of the reverse light socket from its housing then remove the bulb from its socket.
2. Connect the reverse light power cable to the camera, screw the housing & camera back into position with a screwdriver.



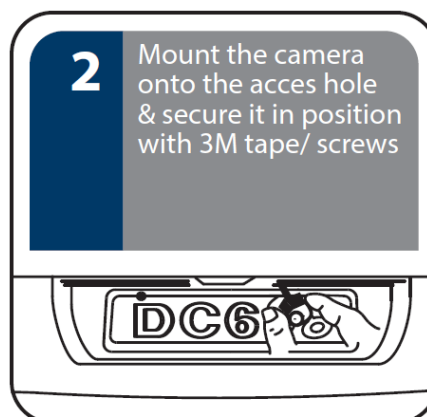
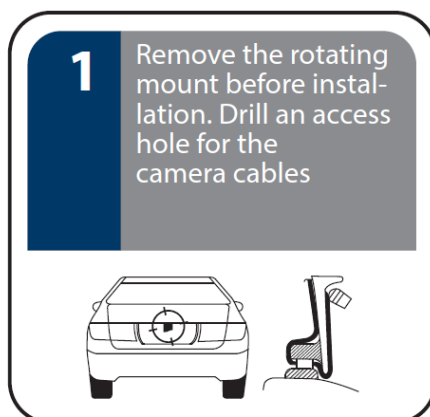
#### Type 2: Hatch Handle

1. Use a screwdriver to remove the original hatch handle
2. Mount the camera where the original hatch handle used to be

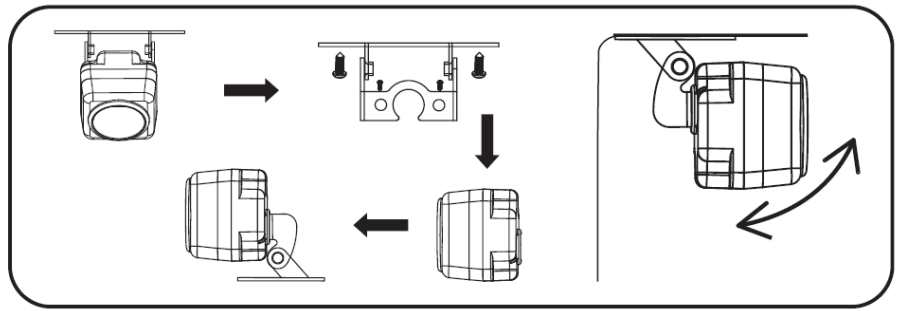
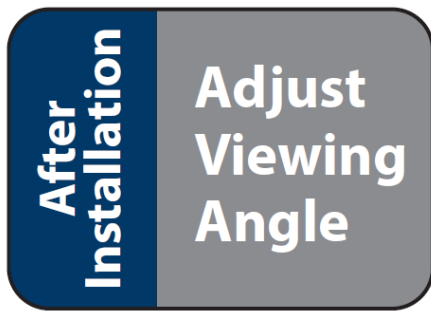


#### Type 3: Car Plate

1. Remove the rotating mount before installation. Drill an access hole for the camera cables
2. Mount the camera onto the access hole & secure it in position with 3M tape/ screws



## After Installation: Adjust Viewing Angle



### Remarks :

1. Pictures are for illustration purpose only, see actual vehicle for accurate installation location.
2. Ensure diameter of hole size is correct before drilling.
3. Ensure drilling process does not harm the component of the vehicle.
4. Assign mounting location that will not obstruct camera view.

## TROUBLESHOOTING

If any of the following problem occur, please resort to Troubleshooting for the possible solutions. Consult Blaupunkt authorized dealer if problem persist.


Problem	Solution
Display monitor / car radio does not show reverse view when reversing.	Restart the display monitor / car radio.
Reverse view does not show even after restarting the display monitor/ car radio.	Examine if the power supplies of the reverse light or the rear car plate light is properly connected.
Reverse view does not show even though power supplies of the reverse light or the rear car plate light is properly connected.	Examine if the power supply cables of the reverse light or the rear car plate light is damaged. Repair/replace if the cables are damaged.





soundphone

## Documents / Resources

	<p><a href="#">BLAUPUNKT Reverse Camera</a> [pdf] User Manual Reverse Camera, RC 1.0, RC 2.0, RC 3.0</p>
---	--