



BLAUPUNKT RC 1.1 Reverse Camera User Manual

[Home](#) » [Blaupunkt](#) » **BLAUPUNKT RC 1.1 Reverse Camera User Manual** 

Contents

- [1 BLAUPUNKT RC 1.1 Reverse Camera](#)
- [2 Reverse Camera RC 1.1](#)
- [3 Installation Instructions](#)
- [4 Installation Diagram](#)
- [5 Installation Location](#)
- [6 Product Usage](#)
- [7 Cautions](#)
- [8 Attentions](#)
- [9 Disclaimer](#)
- [10 Operating and Installation Instructions](#)
- [11 Safety Notes](#)
- [12 INSTALLATION DIAGRAM](#)
- [13 INSTALLATION LOCATION](#)
- [14 INSTALLATION LOCATION](#)
- [15 FRONT / REVERSE CAMERA INSTALLATION](#)
- [16 TROUBLESHOOTING](#)
- [17 Documents / Resources](#)
- [18 Related Posts](#)



BLAUPUNKT RC 1.1 Reverse Camera



Reverse Camera RC 1.1

The Reverse Camera RC 1.1 is a vehicle security system that comes with a CMOS image sensor, PAL TV system, and 750TVL effective pixels. It has an image resolution of 720 (H) x 480 (V) and 25 frames per second. This camera also features exposure and gain control, 1/60~1/100000sec electronic shutter, auto white balance, and 0.2 Lux/F illumination.

Installation Instructions

Before installing the Reverse Camera RC 1.1, read the operating and installation instructions carefully. The manual contains important safety notes that must be observed to prevent any dangers while using the camera.

Installation Diagram

The installation diagram shows how to connect the camera to the display monitor or car radio. The camera has a black wire for ground connection, a red wire for reverse light trigger, and a white/blue wire for parking line. There are different types of installation locations shown in the diagram, including the tail light, hatch handle, and car plate.

Installation Location

When installing the camera, make sure to choose a location that will not obstruct the camera view. Use a screwdriver to remove any necessary components and mount the camera using screws or 3M tape. After installation, adjust the viewing angle as needed.

Product Usage

To use the Reverse Camera RC 1.1, turn on your vehicle and shift into reverse gear. The camera will automatically activate and display the rear view on the monitor or car radio. If you want to remove the parking line from the display, remove the white/blue wire as shown in the installation diagram.

Cautions

Remember to observe the safety notes in the manual and keep it in an easily accessible location for reference. The manual may be updated from time to time without notice.

Attentions

This product is not intended for sale in the United States and Canada. If purchased in the U.S. or Canada, this product is purchased on an as-is basis with no warranty provided.

Disclaimer

Blaupunkt is not liable for any direct, indirect, punitive, incidental, special, consequential damages to property or life arising from the use or misuse of this product.

Operating and Installation Instructions

CAUTIONS

Safety Notes

This vehicle security system has been manufactured according to established safety guidelines. However, dangers may still occur if the safety notes in this manual is not observed. This manual is intended to familiarize the user with the reverse camera important functions. Read this carefully, prior to using the reverse camera. Keep this manual in an easily accessible location. In addition, do observe the instructions of the devices used in conjunction with this reverse camera.

Attentions

- Assign a mounting location that will not obstruct driver in any circumstances. Or cause injuries to drives and passengers in case of emergency brake or accidents.
- Ensure all wires are connected properly, and that the unit is functioning well before fitting the unit into the mount.
- Any unauthorized installation, disassembly or modification may cause malfunction to the unit and void warranty of the unit.
- Always use only the parts that are included with the units only.
- Do not damage vehicle components when drilling holes for the mount.
- Vehicle may differ from the description provided here. Consult an authorized Blaupunkt dealer or vehicle's manufacturer if the information provided here does not fit your specific installation requirement.
- This unit is applicable for front and reverse AHD camera use. Consult an authorized Blaupunkt dealer during installation.
- Unit does not record video.
Avoid automatic car wash or high-pressure water to prevent water and pressure from damaging the camera or causing it to fall off.
- Do not install this unit near heater outlet.

This manual may be updated from time to time without any notice.

Disclaimer

In no event shall Blaupunkt be liable for any direct, indirect, punitive, incidental, special consequential damages to property or life and whatsoever arising out of or connected with the use or misuse of our products. USA & CANADA: This product is not intended for sale in the United States and Canada. If purchased in the U.S. or Canada, this product is purchased on as-is basis. No warranty, whether expressed or implied is provided in the

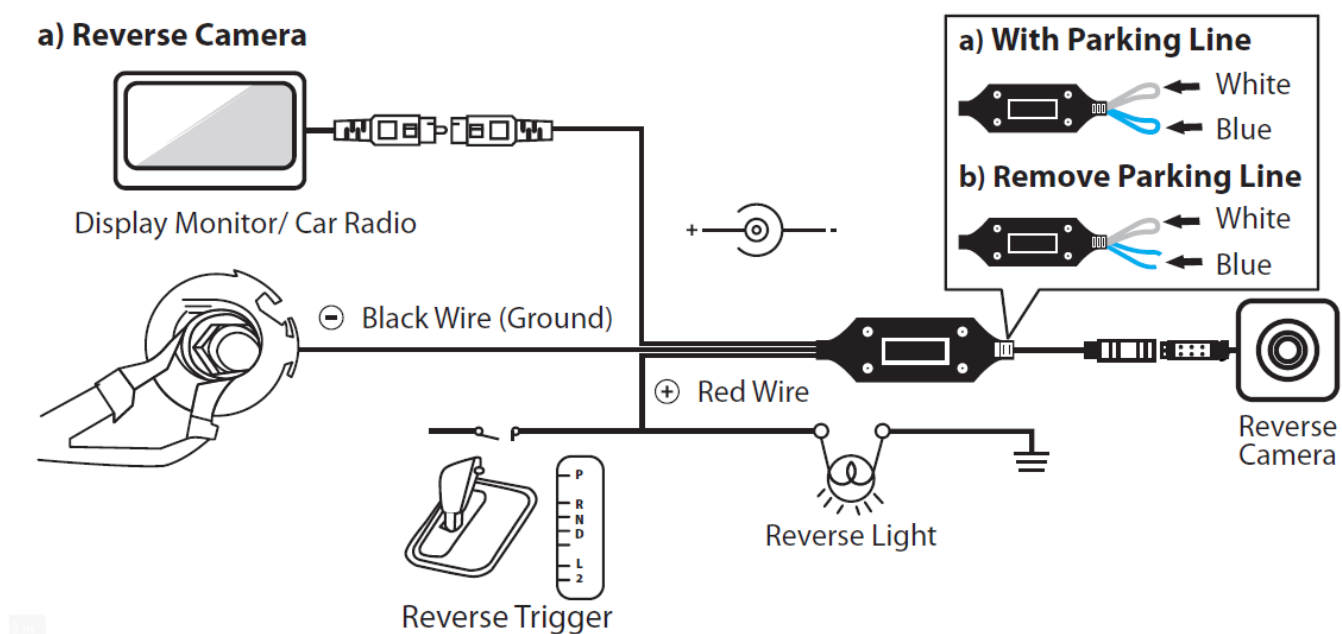
U.S. or Canada.

Features	RC1.1
CMOS Image Sensor	ü
PAL TV System	ü
Effective Pixels	720 (H) x 480 (V)
750TVL Image Resolution	ü
25 Frame Per Second	ü
Exposure & Gain Control	ü
1/60~1/100000sec Electronic Shutter	ü
Auto White Balance	ü
Illumination Min.	0.2 Lux/F
Horizontal View	105°H
Vertical View	95°V
Diagonal View	170°D
DC12V Voltage	ü
Current	29.3mA
DC9-16V Operating Voltage Range	ü
Operating Temperature	-20~+70 °C

Storage Temperature	-30~+75°C
Protection Grade	IP68
RCA/6 PIN DIN	ü
Lens	4 glass

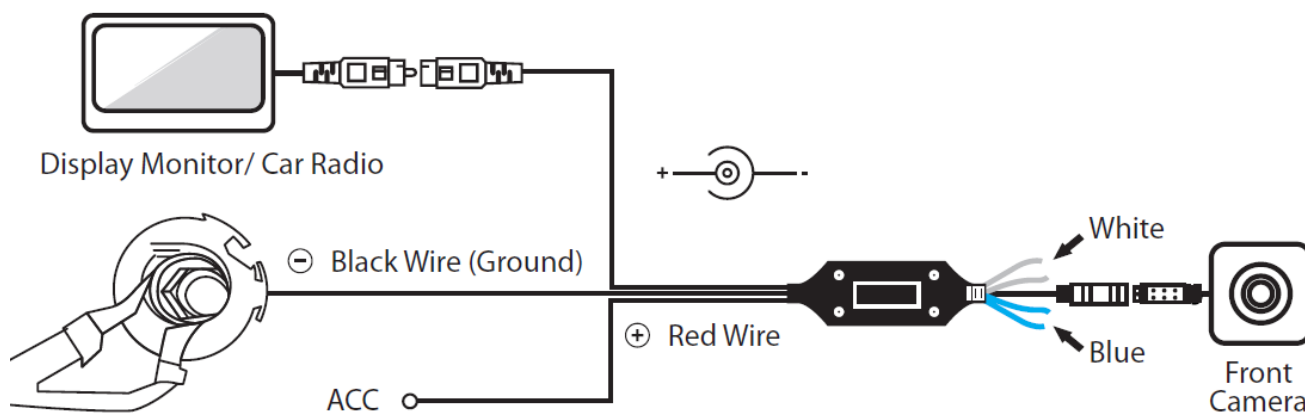
INSTALLATION DIAGRAM

Reverse Camera



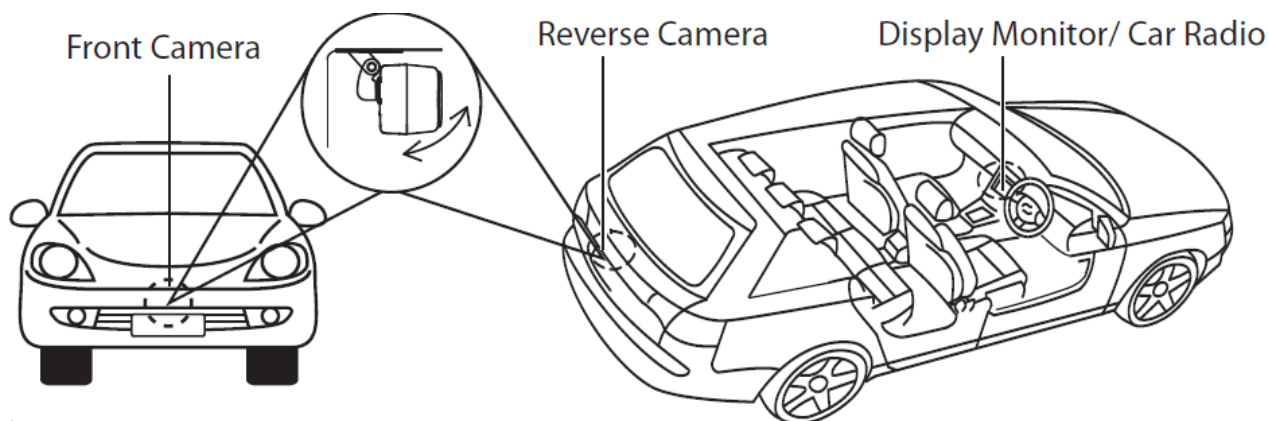
Ground the wire through the exterior body of the vehicle and keep connection intact.

Front Camera



Ground the wire through the exterior body of the vehicle and keep connection intact.

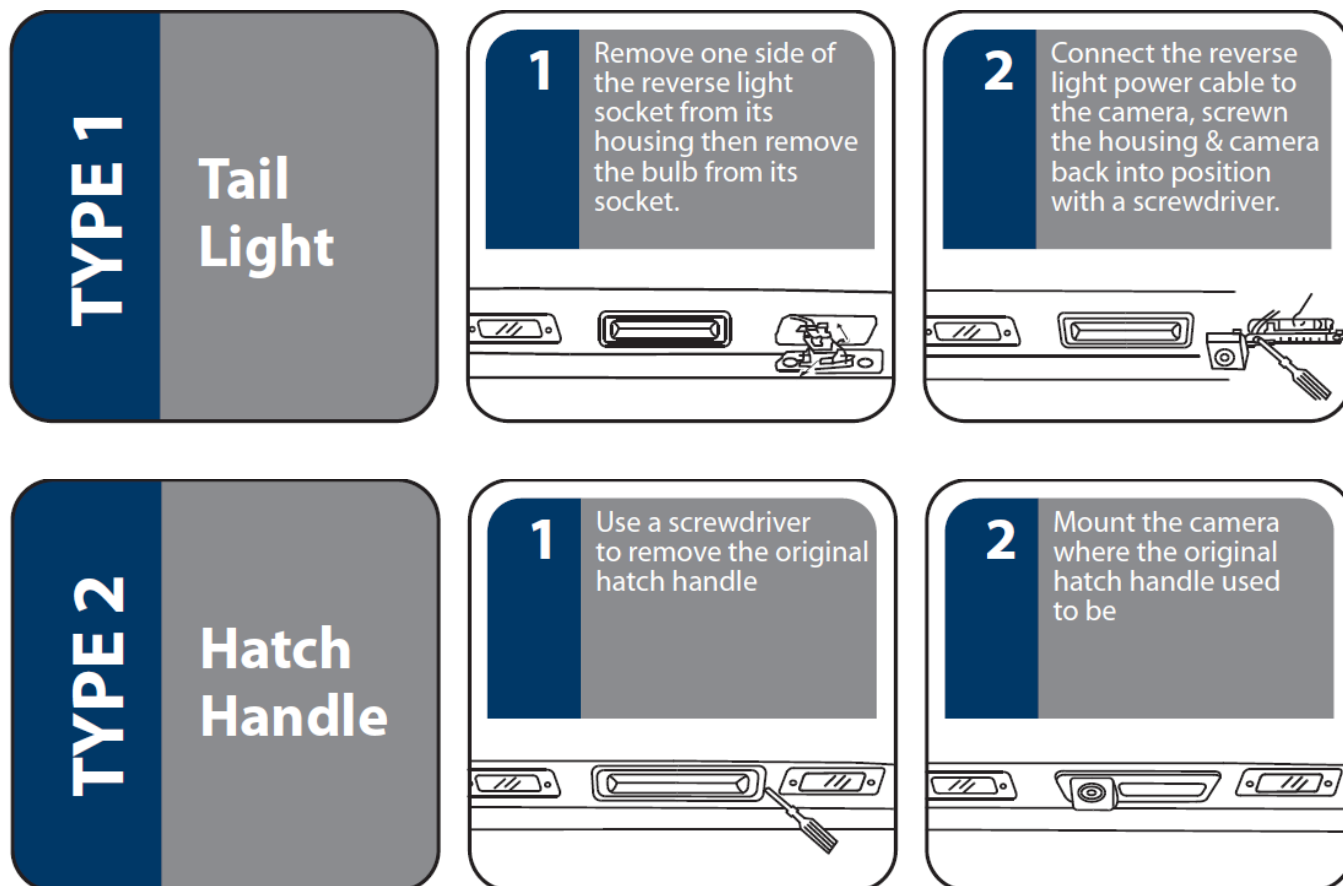
INSTALLATION LOCATION

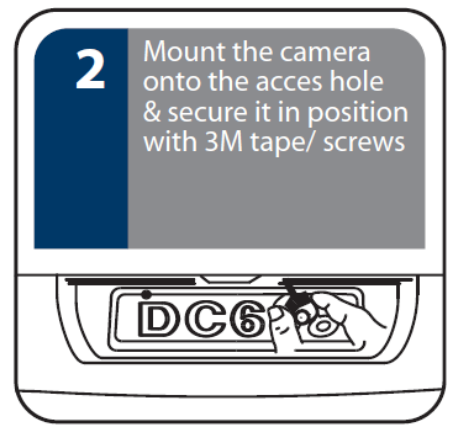
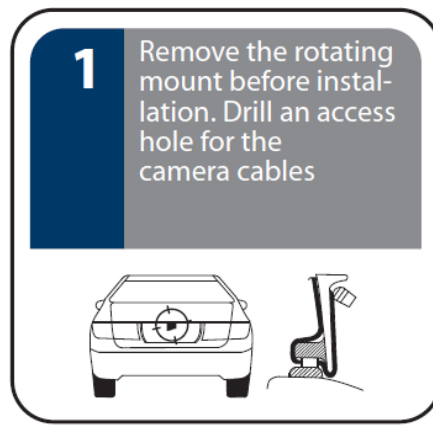
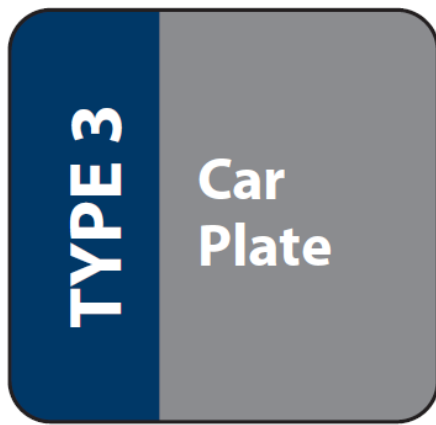


Attention

- Remove protective film from camera lens before use.
- Take extra precautions when setting up the connection near petrol tank and wires.
- Connect Red Wire with reverse light.

INSTALLATION LOCATION





Remarks

1. Pictures are for illustration purpose only, see actual vehicle for accurate installation location.
2. Ensure diameter of hole size is correct before drilling.
3. Ensure drilling process does not harm the component of the vehicle.
4. Assign mounting location that will not obstruct camera view.

FRONT / REVERSE CAMERA INSTALLATION

FRONT/ REAR VIEW DISPLAY & PARKING LINE Reverse Camera Wiring (Remove Parking Line)



Reverse Camera

Do not cut the wires when using as reverse camera.



Reverse Camera

Cut blue wire when using as reverse camera to remove parking line.

Front Camera Wiring (Flip Viewing Display & Remove Parking Line)



Reverse Camera

Do not cut the wire when using as reverse camera.



Front Camera

Cut white & blue wires when using as front camera to flip viewing display & remove parking line.

TROUBLESHOOTING

If any of the following problem occur, please resort to Troubleshooting for the possible solutions. Consult Blaupunkt authorized dealer if problem persist.

Problem	Solution
Display monitor / car radio does not show reverse view when reversing.	Restart the display monitor / car radio.
Reverse view does not show even after restarting the display monitor/ car radio.	Examine if the power supplies of the reverse light or the rear car plate light is properly connected.
Reverse view does not show even though power supplies of the reverse light or the rear car plate light is properly connected.	Examine if the power supply cables of the reverse light or the rear car plate light is damaged. Repair/replace if the cables are damaged.



Designed and engineered by Blaupunkt Competence Centre

Documents / Resources



[BLAUPUNKT RC 1.1 Reverse Camera](#) [pdf] User Manual

RC 1.1 Reverse Camera, RC 1.1, Reverse Camera, Camera