



## BLAUPUNKT MS16BT Edition Micro System with Bluetooth and USB Player Owner's Manual

[Home](#) » [Blaupunkt](#) » BLAUPUNKT MS16BT Edition Micro System with Bluetooth and USB Player Owner's Manual 

### BLAUPUNKT MS16BT Edition Micro System with Bluetooth and USB Player



## Contents

- 1 Important Safety Instructions
- 2 SAFETY INSTRUCTIONS
- 3 Control locations
  - 3.1 Front & rear panel
- 4 Remote control battery installation
- 5 General operation
- 6 CD operation
- 7 FM radio operation
- 8 Specification
- 9 Trouble shooting
- 10 Customer Support
- 11 Documents / Resources
  - 11.1 References
- 12 Related Posts

## Important Safety Instructions



### Caution:

To reduce the risk of electric shock, do not remove cover (or back). No user serviceable parts inside. Refer servicing to qualified service personnel.

### Explanation of Graphical Symbols:



The lightning flash within an equilateral triangle is intended to alert you to the presence of uninsulated dangerous voltage within the product's enclosure that may be of sufficient magnitude to constitute an electric shock to a person or persons.



The exclamation point within an equilateral triangle is intended to alert you to the presence of important operating and maintenance (servicing) instructions in the literature accompanying the product.

To achieve the utmost in enjoyment and performance, and in order to become familiar with its features, please read this manual carefully before attempting to operate this product. This will assure you years of trouble free performance and listening pleasure.

### Important Notes

- This safety and operating instruction should be retained for future reference.
- The apparatus should not be exposed to dripping or splashing or placed in a humid atmosphere such as a bathroom.
- Do not install the product in the following areas:
- Places exposed to direct sunlight or close to radiators.

- On top of other stereo equipment that radiate too much heat.
- Blocking ventilation or in a dusty area.
- Areas where there is constant vibration.
- Humid or moist places.
- Do not place near candles or other naked flames.
- Operate the product only as instructed in this manual.
- Before turning on the power for the first time, make sure the power adaptor is properly connected.
- Plug-in the USB stick directly or use an USB-extension cable which is not longer than 25 cm.

For safety reasons, do not remove any covers or attempt to gain access to the inside of the product. Refer any servicing to qualified personnel.

Do not attempt to remove any screws, or open the casing of the unit; there are no user serviceable parts inside. Refer all servicing to qualified service personnel.

## **SAFETY INSTRUCTIONS**

1. Read Instructions – All the safety and operating instructions must be read before the product is operated.
2. Retain Instructions – The safety and operating instructions should be kept with the product for future reference.
3. Heed warnings – All warnings on the product and in the operating instructions should be adhered to.
4. Follow instructions – All operating and users' instructions should be followed.
5. Installation – Install in accordance with the manufacturer's instructions.
6. Power sources – This product should be operated only from the type of power source indicated by the marking adjacent to the power cord entry. If you are not sure of the type of power supply to your home, consult your product dealer or local power company.
7. Grounding or polarization – the product is not required to be grounded. Ensure that the plug is fully inserted into the wall outlet or extension cord receptacle to prevent blade or pin exposure. Some versions of the product are equipped with a power cord fitted with a polarized alternating line plug (a plug having one blade wider than the other). This plug will fit onto the power outlet only one way. This is a safety feature. If you are unable to insert the plug fully into the outlet, try reversing the plug. If the plug should still fail to fit, contact your electrician to replace your obsolete outlet. Do not defeat the safety purpose of the polarized plug. When using an extension power-supply cord or a power-supply cord other than that supplied with the appliance, it should be fitted with the appropriate molded plugs and carry safety approval appropriate to the country of use.
8. Power cord protection – Power-supply cords should be routed so that they are not likely to be walked on, kinked or pinched by items placed on or against them, paying particular attention to cords from plugs, receptacles and the point where they exit from the product.
9. Overloading – Do not overload wall outlets, extension cords, or multiple sockets, as this can result in a risk of fire or electric shock.
10. Ventilation – The product must be properly ventilated. Do not place the product on a bed, sofa, or other similar surface. Do not cover the product with any items such as tablecloths, newspapers, etc.
11. Heat – The product should be situated away from heat sources such as radiators, heat registers, stoves, or other products, including amplifiers that produce heat. No naked flame sources, such as lighted candles, should be placed on the apparatus.
12. Water and moisture – To reduce the risk of fire or electric shock, do not expose the product to rain, dripping,

splashing or excessive moisture such as in a sauna or bathroom. Do not use this product near water, for example, near a bathtub, washbowl, kitchen sink, laundry tub, in a wet basement or near a swimming pool (or similar).

13. Object and Liquid Entry – Never push objects of any kind into this product through openings, as they may touch dangerous voltage points or short-circuit parts that could result in a fire or electric shock. Never spill liquid of any kind on the product. Do not place any object containing liquid on top of the product.
14. Cleaning – Unplug the product from the wall outlet before cleaning. Dust in the woofer may be cleaned with a dry cloth. If you wish to use an aerosol cleaning spray, do not spray directly on the cabinet; spray onto the cloth. Be careful not to damage the drive units.
15. Attachments – Do not use attachments not recommended by the product manufacturer, as they may cause hazards.
16. Accessories – Do not place this product on an unstable cart, stand, tripod, bracket or table. The product may fall, causing serious injury to a child or adult, and serious damage to the product. Use only with a cart, stand, tripod, bracket or table recommended by the manufacturer or sold with the product. Any mounting of the product should follow the manufacturer's instructions and should use a mounting accessory recommended by the manufacturer.
17. Moving the product – A product and cart combination should be moved with care. Quick stops, excessive force and uneven surfaces may cause the product and cart combination to overturn.
18. Unused periods – The power cord of the appliance should be unplugged from the outlet during lightning storms or when the apparatus is left unused for a long period of time.
19. Servicing – Do not attempt to service this product yourself, as opening or removing covers may expose you to dangerous voltage or other hazards. Refer all servicing to qualified service personnel.
20. Please remove the power plug from the main power source or wall power source when not in use. When plugged in to a power source, the system is in standby mode, so the power is not entirely cut off.
21. Replacement parts – When replacement parts are required, ensure that the service technician has used replacement parts specified by the manufacturer or have the same characteristics as the original part. Unauthorized substitutions may result in fire, electric shock or other hazards.
22. Mains fuses – For continued protection against fire hazard, use fuses only of the correct type and rating. The correct fuse specification for each voltage range is marked on the product.
23. Do not turn up the volume while listening to a section with very low level inputs or no audio signals. If you do, the speaker may be damaged when a peak level section is suddenly played.
24. The only means of completely disconnecting the product from the power supply is by removing the power cord from the wall outlet or the product. The wall outlet or the power cord entry to the product must remain freely accessible at all times while the product is in use.
25. Try to install the product near a wall socket or extension cord and shall be easily accessible.
26. The highest environmental temperature suitable for this product is 35°C.
27. ESD hints – If the product maybe reset or not reset to operation of control due to electrostatic discharge, just switch off and reconnect again, or move the product to another location.
28. Battery
  - a. The batteries must not be exposed to excessive heat such as sunshine, fire or the like.
  - b. The batteries should be drawn to the environmental aspects of battery disposal.
  - c. Battery usage CAUTION-to prevent battery leakage which may result in body injuries, property damage, or damage to the apparatus:

- Install all batteries correctly, + and – as marked on the apparatus.
- Do not mix batteries (old and new or carbon and alkaline, etc.)
- Remove batteries when the unit is not used for a long time.

### **ERP2 (Energy Related Products) note**

This product with ecodesign complies with the stage 2 requirements of Commission Regulation (EC) NO. 1275/2008 implementing Directive 2009/125/EC regard to standby and off mode electric power consumption of electronic household and office equipment. After 30 minutes without any audio input, the device will automatically switch into standby mode. Follow up the instruction manual to resume the operation.

### **Important note:**

This device is equipped with an energy saving mode: if no signal is given during 30 minutes the device will switch automatically into standby mode in order to save energy (ERP 2 standard). Please note that low volume setting in the audio source may be recognized as “no audio signal”: this will affect the capability of signal detection from the device and can also originate an automatic switch into standby mode. If this happens please reactivate the audio signal transmission or increase the volume setting on the audio source player (MP3 player, etc.), in order to resume playback. Please contact the local service center if the problem remains.

### **WARNING**

This appliance is not intended for use by persons (including children) with reduced physical sensory or mental capabilities, or lack of experience and knowledge, unless they have been given supervision or instruction concerning use of the appliance by a person responsible for their safety. Children should be supervised to ensure that they do not play with the appliance.

1. Never use the device unsupervised! Switch off the device whenever you are not using it, even if this only for a short while.
2. The appliance is not intended to be operated by means of an external timer or separate remote control system.
3. If the supply cord is damaged, it must be replaced by the manufacturer, its service agent or similarly qualified persons in order to avoid a hazard.
4. Before operating this system, check the voltage of this system to see if it is identical to the voltage of your local power supply.
5. The unit should not be impeded by covering the ventilation opening with items such as newspaper, table-cloths, curtains etc. Make sure that there are at least 20 cm of space above and at least 5 cm of space on each side of the unit.
6. The apparatus must not be exposed to dripping or splashing and that objects filled with liquids, such as vases, must not be placed on the apparatus.
7. To prevent fire or shock hazard, do not expose this equipment to hot places, rain, moisture or dust.
8. Do not locate this unit near any water sources e.g. taps, bathtubs, washing machines or swimming pools.  
Ensure that you place the unit on a dry, stable surface.
9. Do not place this unit close to a strong magnetic field.
10. Do not place the unit on a amplifier or receiver.
11. Do not place this unit in a damp area as the moisture will affect the life of electric components.
12. If the system is brought directly from a cold to a warm location, or is placed in a very damp room, moisture may condense on the lens inside the player. If this occurs, the system will not operate properly. Please leave the system turned on for about an hour until the moisture evaporates.
13. Do not attempt to clean the unit with chemical solvents as this might damage the finish. Wipe with a clean, dry or slightly damp cloth.

14. When removing the power plug from the wall outlet, always pull directly on the plug, never pull on the cord.
15. Depending on the electromagnetic waves used by a television broadcast, if a TV is turned on near this unit while it is also on, lines might appear on the TV screen. Neither this unit nor the TV is malfunctioning. If you see such lines, keep this unit well away from the TV set.
16. The mains plug is used as the disconnect device, the disconnect device must remain readily operable.
17. To keep the laser pickup clean, do not touch it, and always close the disc tray.
18. During playback, the disc rotates at high speed. DO NOT lift or move the unit during playback, doing so may damage the disc or the unit.
19. When changing places of installation or packing the unit for moving, be sure to remove the disc and return the disc tray to its closed position in the player. Then, press switch to turn the power off and disconnect the power cord. Moving this unit with the disc loaded may result in damage to this unit.
20. Put discs back in their case after playing them. Never expose discs to direct sunlight or heat sources. Never leave discs inside a car parked in full sunlight.
21. Do not touch the playback side of disks. Hold discs by the edges to avoid leaving fingerprints on the surface. Any dust, fingerprints or scratches may cause a malfunction. Never attach a label or sticky tape to the disc.
22. Use a clean soft lint-free cloth to clean the disc, working from the center outwards in a straight line, thinners, commercially available cleaners or anti static sprays for vinyl discs.
23. To prevent possible hearing damage, do not listen at high volume levels for long periods.



**WARNING: DANGER OF RADIATION**

CLASS 1 LASER PRODUCT  
LUOKAN 1 LASERLAITE  
KLASS 1 LASERAPPARAT

This label means that this unit contains a laser component. Opening the CD compartment lid and defeating the safety interlocks will expose the user to radiation from the laser beam. Do not stare into the laser while it is operating.

#### BEFORE OPERATION

Notes: Concerning compact discs



Since dirty, damaged or warped discs may damage the appliance, care should be taken of the followings items:

- a. Usable compact discs. Use only compact disc with the mark shown below.
- b. CD compact disc only with digital audio signals.

#### NOTICE



Conformity

Hereby, Blaupunkt Competence Center 2N-Everpol Sp. z o.o., declares that this equipment is in compliance with the essential requirement and other relevant provisions of Directive 2014/53/EU. Declaration of conformity can be obtained from the product page at [www.blaupunkt.com](http://www.blaupunkt.com).

Responsible party: 2N-Everpol Sp. z o.o, Puławska 403A, 02-801 Warsaw, Poland, Phone: +48 22 688 08 00, E-mail: [info@everpol.pl](mailto:info@everpol.pl)



Your products is designed a manufactured with high quality materials and components, which can be recycled and reused.



When this crossed-out wheeled bin symbol is attached to a product it means that the product is covered by the European Directive 2012/19/EU. Please inform yourself about the local separate collection system for electrical and electronic products. Please act according to your local rules and do not dispose of your old products with your normal household waste. Correct disposal of your old product helps to prevent potential negative consequences for the environment and human health.



Your product contains batteries covered by the European Directive 2006/66/EC, which cannot be disposed with normal household waste. Please inform yourself about the local rules on separate collection of batteries because correct disposal helps to prevent negative consequences for the environmental and human health. Environmental information

All unnecessary packaging has been omitted. We have tried to make the packaging easy to separate into three materials: cardboard (box), polystyrene foam (buffer) and polyethylene (bags, protective foam sheet). Your system consists of material which can be recycled and reused if disassembled by a specialized company. Please observe the local regulations regarding the disposal of packaging materials, exhausted batteries and old equipment. Recording and playback of material might require consent. See Copyright Act 1956 and The Performer's Protection Acts 1958 to 1972.

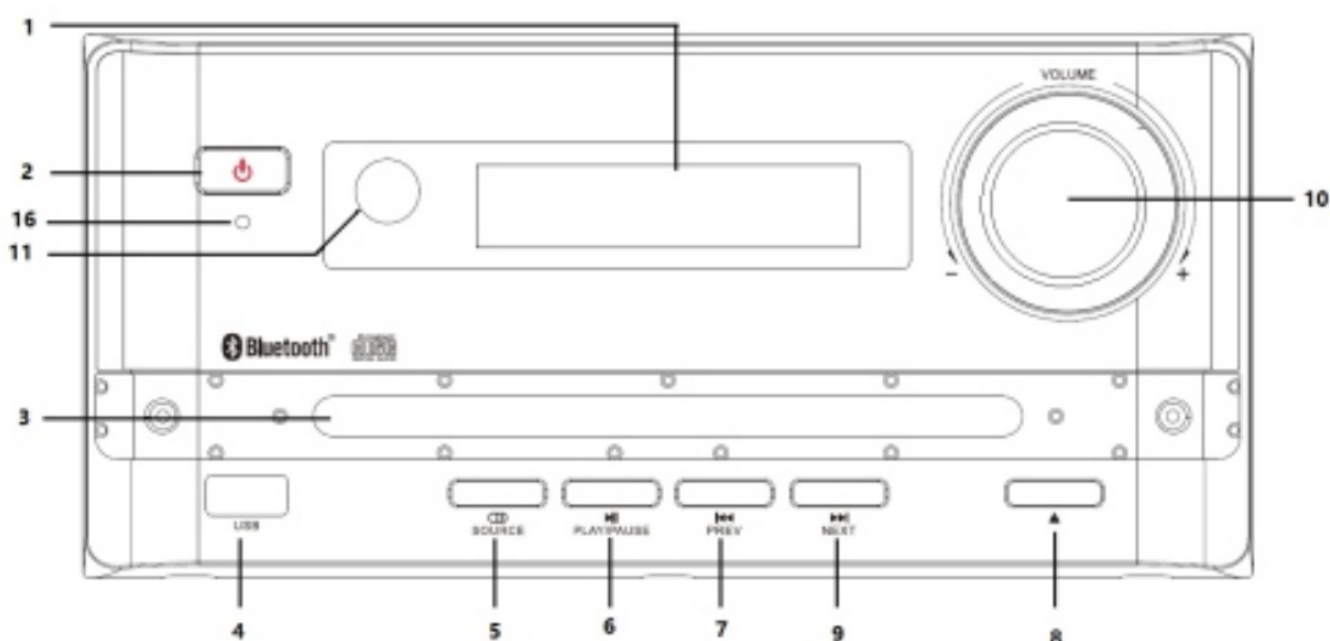


The Bluetooth® word mark and logos are registered trademarks owned by Bluetooth SIG, Inc. and any use of such marks by us is under license. Other trademarks and trade names are those of their respective owners.

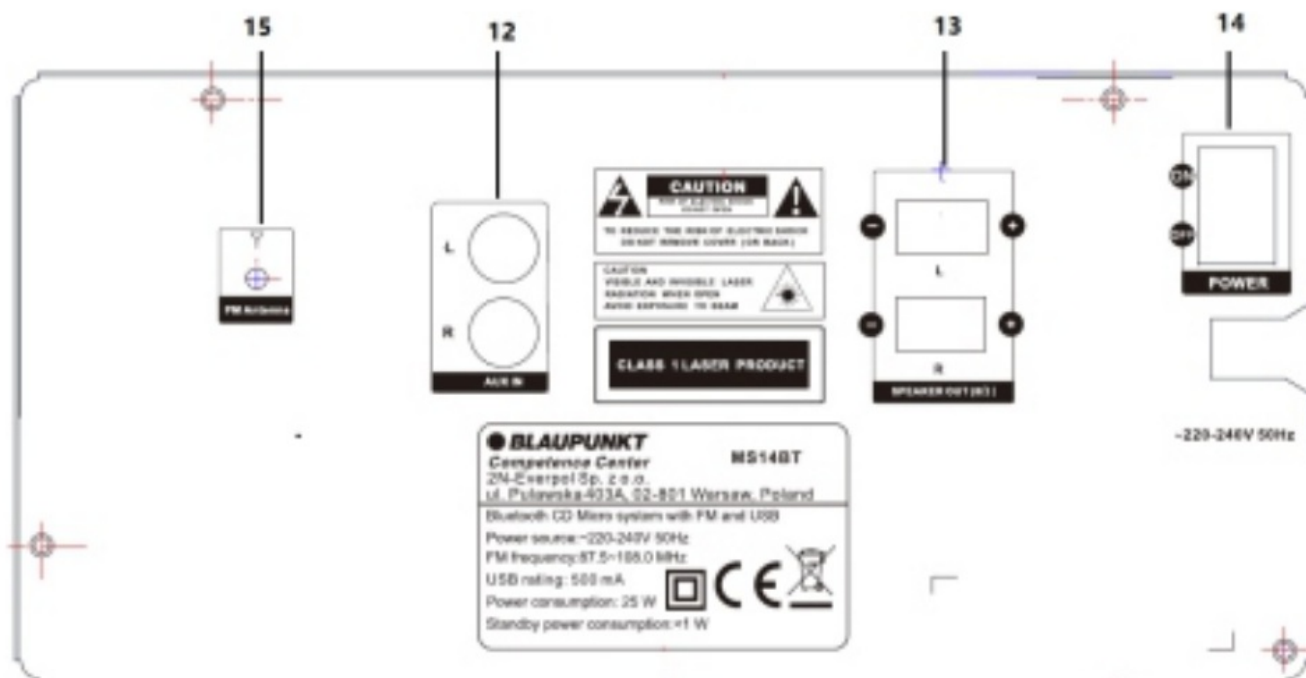
Many thanks to purchase our product, please reference the following operation guide and enjoy the music.

## Control locations

### Front & rear panel

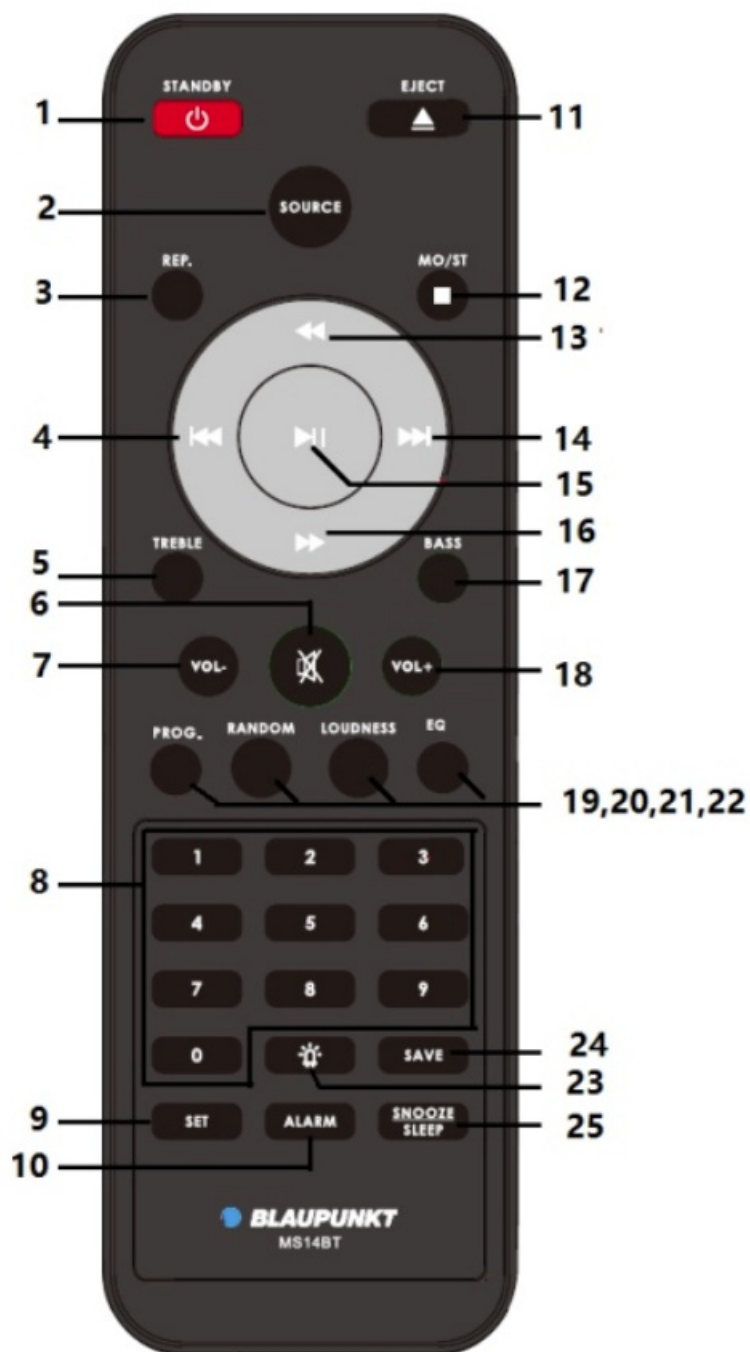






1. Display,
2. standby,
3. CD door,
4. USB port,
5. Source,
6. Play/pause,
7. Previous,
8. Eject,
9. Next
10. Volume +/-
11. IR sensor
12. AUX IN
13. L/R speaker out terminal
14. power ON/OFF
15. FM antenna
16. power LED indicator

## Remote control



1. Standby/power
2. Source
3. repeat
4. Previous
5. treble
6. mute
7. Volume –
8. Digits button,
9. set,
10. alarm,
11. Eject,
12. Mono/stereo/stop
13. Fast-rewind

14. Next
15. Play/pause
16. Fast-forward
17. Bass
18. Volume +
19. Program
20. Random
21. loudness
22. EQ(classic/rock/POP/Jazz/Dance/Liue/off)
23. LED light
24. snooze/sleep

## Remote control battery installation

Before using the remote controller, please make sure that you have installed the batteries(included) power inside. Please reference below operation.



1. Open the battery door on the bottom of remote control and insert 2 x AAA dry batteries into the compartment. Please pay attention to the polarity symbol and aim it accordingly.
2. Close the battery door and put the remote controller sensor aim to the IR sensor during operation.

### Notes:

- a. The best working distance of remote controller is within 5 meters without any obstacle, the working angle is +/- 30 degree base on the IR sensor on unit front panel.
- b. Please dispose the exhausted battery in environmental friendly. Please reference and check your local government requirements for the detail.

## General operation

### 1. Speaker system connection and power on

Before start the audio playing, please connect the satellite speaker to the main unit's speaker output L/R terminals with their attached speaker wire..

Connect the AC power plug to household AC power sourcing, press the power ON/OFF switch belong to on position from rear panel, press the standby button on front panel of unit, or remote controller to power on the unit.

### 2. Volume adjustment

Rotate the volume knob, or press the Vol +/Vol – button can increase or decrease the volume level.

### 3. Play mode selection

Press the source button repeatedly can switch the play model between CD/USB/AUX/Bluetooth/FM.

#### 4. **Mute, play/pause, stop**

Press the mute button on remote control can make the speaker output in silence, and press it again to resume the playing. To Press the pause button for playing pause, and press the play button to resume the playing. Press the stop button to stop the playback on CD mode.

#### 5. **Repeat/Random**

To press it for repeat one, repeat all and random playback.

#### 6. **Digits button**

Press the relative digit button to select the track and FM preset station; in order to select the track faster you can key-in the track number directly, then there will skip to the track for playing after a while.

#### 7. **Fast-forward, Fast-rewind,**

Press it for fast rewinding or fast-forwarding the current playing track, press it again resume to normal playback. Press and hold previous or next button on front panel can achieve this function as well, and resume normal playing after release the button.

#### 8. **previous and next button**

Press it to select last and next track.

#### 9. **Treble and bass adjustment**

Press the treble or bass button first, then press the “VOL-” and “VOL+” button to adjust treble or bass setting value. The speaker output sound will be changed accordingly. There will quit the setting after wait a while.

#### 10. **Loudness and equalizer**

Press the loudness button to adjust the output sound with more bass quickly; press the EQ button repeatedly to switch the preset EQ mode between classic/rock/POP/Jazz/Dance/Liue/off.

#### 11. **LED light**

Short press the button from remote controller to turn on or off the LED light which surround the CD door.

#### 12. **Eject CD:**

press the eject button on front panel or remote controller to eject the CD. Press it again to close the CD.

### **CD operation**

The system includes CD playback function, which allows you to play CD/-R/-RW/MP3/WMA format disc. Before start the CD playback, please make sure there is no scratch or dirty dot on the disc, which affects the playing sound quality. Power on the unit, and press the source button repeatedly on front panel of unit in order enter to the CD playback mode.

**CD program** : in CD playing mode, press the “STOP” button first, then press the “PROG” button and shows “P01” on display; press previous/next button or key-in the number of track that you want to be programmed (E.g. input “04”, then the NO.4 track will be programmed as the first playing song). Then press program button again to confirm it, the display will skip and show “P02”. Continue to repeat the operation till the display show “full” in order to complete the track program. Then press the play button to start the programmed track playing. There can program up to 20 tracks for CD disc, and 99 tracks for MP3/WMA disc. Press the “STOP” button twice can cancel the program operation.

In CD playback mode, you can achieve the volume adjustment, mute, play/pause, repeat, fast-forward and fast-rewind, previous and next, and treble & bass adjustment, loudness etc. function after press relative button. You also can fast select the track by the digit button.

### **FM radio operation**

Before start the FM listening, please kindly full extent the rear FM wire antenna or move the unit next to the window in order to get better FM reception. Power on the unit, press source button repeatedly on front panel in order to enter FM mode.

1. **Auto tune and preset (all-in-one):** long press(2 seconds) the play/pause button on remote control or front panel can tune and save the available station automatically. The unit can save up to 40 preset stations. Long press (2 seconds) the previous/next button on front panel will scan and play the available station in upward or downward frequency automatically.
2. **Auto scan and manual tune:** Short press the “ fast-rewind” and ” fast-forward” button on remote control can increase or decrease the FM frequency per 0.05MHz. Press and hold the button in 2 seconds can auto scan the available station.
3. **Station memory in manual:** when you turned a favorite station, short press the save button first, and then press the previous and next button to switch the desirable preset station number, press save button again to confirm it. Then the current station will be save in your desired preset station.
4. **Get a specific frequency station:** in order to get a specific frequency station, you can input the frequency directly by the digit button on remote control. For example, you want to listen the radio frequency at “ 104.3 MHz”, you just need key-in digits 1-0-4-3 by remote controller, and wait a while. Then the unit will skip and play the defined station.
5. **Preset station picking up:** short press the “ Previous” or “ Next” button on remote control or front panel can pick up the preset station; Or input preset station number by digit button on remote control for picking up. For example, you want to listen the preset station number 12, please just key in 1-2 by remote control, then the relevant station will be played.

**Tips:** In FM radio mode, if there have many background noise on the station, please try to press the “ MO/ST” button on remote control switch to mono speaker output which may reduce the background noise.

### USB playback operation

Before start the playing, please copy MP3 format music and insert the USB device into USB port, press the source button repeatedly to enter the USB mode. The unit will auto detect the device and start playing. In USB playback mode, you can achieve the volume adjustment, mute, play/pause, repeat, fast-forward and fast-rewind, previous and next track, and treble & bass adjustment function, loudness etc. after press relative button.

#### Notes:

- a. Depending on the amount of data and media, it may takes longer for the unit to read out the USB device. In some cases, the reading time may up to 60 seconds. This is not a malfunction.
- b. Using USB extension cable for playing connection is not recommended which may impact the audio data transfer, and cause the sound output intermittently.
- c. Even when the files are in a support MP3 format, some may not play or display depending on the compatibility.
- d. The maximum supported capacity of USB device is up to 32GB, support MP3/WMA music file.

### Bluetooth operation

The unit includes Bluetooth function which allows you to wireless playback the music from your Bluetooth device. Please reference below for operation.

1. Press the source button enter to the Bluetooth mode.
2. Enable the Bluetooth function on your Bluetooth device (please reference your device user manual for the operation), and then check the available Bluetooth device on the menu list of your device. Please select “ BP MS16BT” on list(please input “0000” in case of POP password request). Then your device will start to pair the

speaker system.

3. Please select the music from your Bluetooth device and start the playing, then the audio will output from the speaker system.
4. You can press the "Next/previous" button to select the track, and press "play/pause" button for playback operation; long press(2 seconds) the play/pause button to disconnect the current Bluetooth device pairing.

**Note:**

- a. Some devices may pair and connect immediately; some may take longer time due to different brand and designed Bluetooth product.
- b. The unit only can pair and playback with one device at one time.
- c. The best working distance of Bluetooth is within 10 meters. You can try to move your Bluetooth device close to the unit in case of sound output intermittently.
- d. To connect another Bluetooth device, you have to turn off the Bluetooth function on your current device. Then reference above for operation.

**AUX IN/MP3 LINK playback operation**

Using the supplied 3.5mm stereo to RCA audio cable connect with the line out jack of your player (E.g. mp3 player etc), and connect another terminal of audio cable to the AUX IN jack on the rear panel of unit, then press source button on front panel enter to the AUX IN mode. Select the music and start the playing from your player, then adjust the volume of unit. The music will output from the micro system speaker.

Please kindly note the main control is from your player in AUX IN mode. You can adjust the volume from the micro system.

**Clock and alarm**

**Clock setting:** in standby mode, long press(2 seconds) the set button from remote controller to start the clock time setting, press the previous or next button to adjust the hours, Short press set button again to confirm and skip to minute setting, press previous or next button to adjust the minutes, short press set button again to confirm and quite the clock setting.

**Alarm setting:** the unit includes simply alarm function, which can play the music automatically at set up time, or wake up you. Long press(2seconds) the alarm button from remote controller, the hour digits will flare on display, press previous or next button to adjust the hours, short press the alarm button to confirm and skip to minute/alarm source/alarm volume setting

which is same operation as hours setting, press the alarm button again to confirm and quite the alarm setting.

- a. The clock and alarm only workable when the AC power is connected. Please set up the clock and alarm again in case of power interrupted.
- b. When we set up the alarm ready, the "AL" symbol will show on display, short press the alarm button can turn on or off the alarm.
- c. You can select the alarm source between CD/FM/USB/Buzz, please make sure the disc or USB device is available when you select it as alarm source.
- d. You can select the alarm volume between 7~30.
- e. When the alarm time is being, the unit will wake up with alarming; short press the standby power button to cancel the alarm sound, and the unit will wake up again at same time next day.

**Specification**

- Power source: ~220V-240v, 50Hz
- CD: compatible to CD/-R/-RW/MP3/WMA.
- FM radio frequency: 87.5~108.0MHz
- Bluetooth version: V5.0
- USB rating: 500 mA
- USB support device: up to 32GB max, support MP3/WMA playback.

- RMS output: 2 x 7.5W
- Power consumption: 25W
- Standby power consumption: <1W

## Trouble shooting

1. There is no sound from the speaker
  - a. Check if the volume was turned up;
  - b. Check if the speaker was connected with main unit properly;
  - c. Control the local service center for support if the issue still remains;
2. The sound is distorted
  - a. Please try to turn the volume a little down.
  - b. Please try to adjust the bass and treble setting.
3. Background noise on FM ration station
  - a. Please try to extent and adjust the antenna direction, or move the unit next to the window for better signal reception.
  - b. Please turn to other station for listening.
4. There have unexpected noise in CD playing
  - a. Please try to clean the CD disc and replay it.
5. The sound is intermittent output in Bluetooth mode
  - a. Please try to move your Bluetooth device more close to the speaker.
  - b. Please turn off the Bluetooth function and re-pairing.

## Customer Support

### Competence Center

2N-Everpol Sp. z o.o.

ul. Pulawska 403A

02-801 Warsaw, Poland

phone: +48 22 688 08 00

e-mail: [info@everpol.pl](mailto:info@everpol.pl)

[www.blaupunkt.com](http://www.blaupunkt.com)

In case of questions or problems

please contact our service.

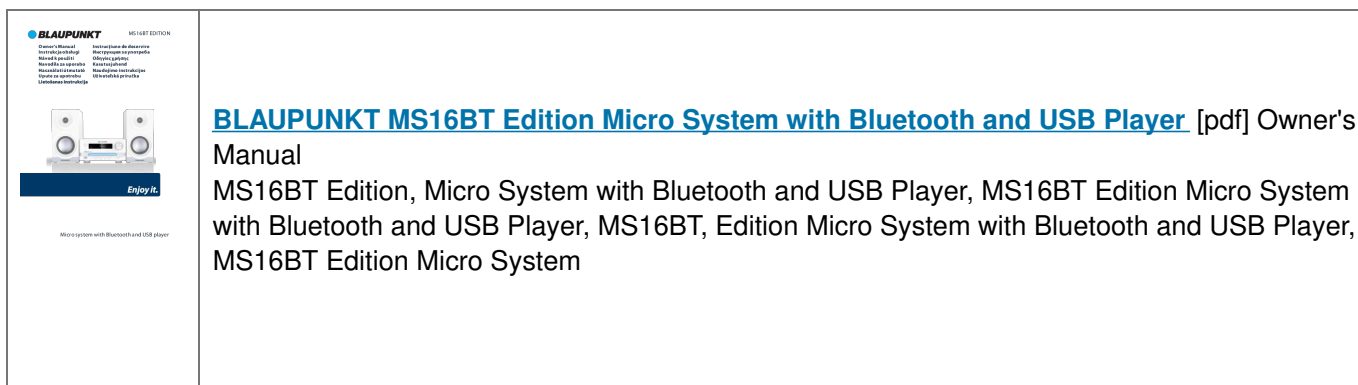
Tel. 00 48 22 688 08 33

E-mail: [info@blaupunkt-audio.pl](mailto:info@blaupunkt-audio.pl)

Enjoy it.

All rights reserved. All brand names are registered trademarks of their respective owners. Specifications are subject to change without prior notice.





## References