



BLAUPUNKT CS2010 Chainsaw 18V Owner's Manual

[Home](#) » [Blaupunkt](#) » BLAUPUNKT CS2010 Chainsaw 18V Owner's Manual 

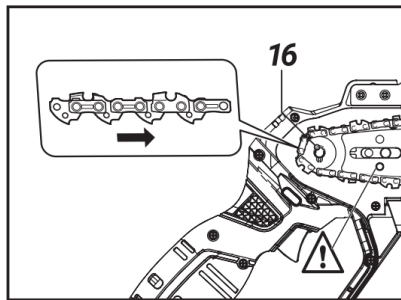
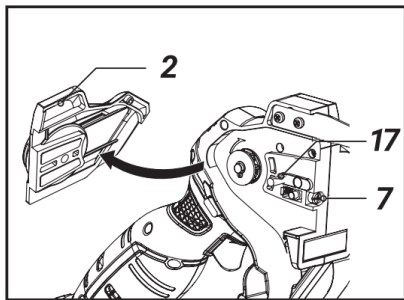
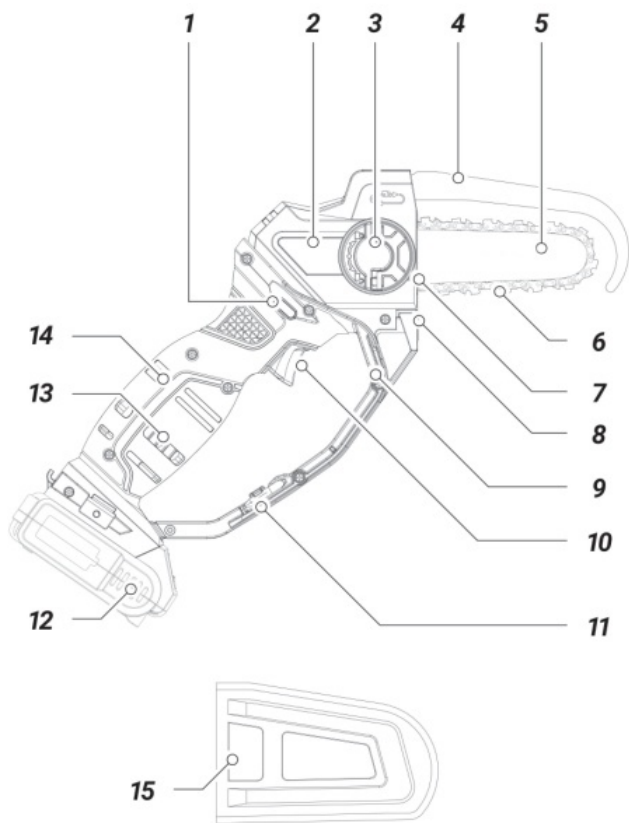
BLAUPUNKT CS2010 Chainsaw 18V Owner's Manual



Contents

- 1 Product Overview
- 2 Safety rules for machinery and electrical equipment
- 3 Storage
- 4 Installing the battery pack
- 5 Operation
- 6 Removing and installing the chain bar
- 7 SAWING – GENERAL TIPS
- 8 CLEANING AND MAINTENANCE
- 9 TECHNICAL DATA
- 10 Documents / Resources
- 11 Related Posts

Product Overview



Safety rules for machinery and electrical equipment

The device is considered suitable for use in countries with a moderate, evenly humid climate. It can also be used in other countries.









NOTE! Before installation or using the device, it is absolutely necessary to read the instruction manual and, in particular, the recommendations concerning the safety of use. Keep the manual for inspection and pass it on to the next users of the device.

Failure to follow these safety instructions and warnings can result in electric shock, fire or serious personal injury. Do not allow children and adolescents to operate the device.

Do not attempt to install, maintain or use the device if you are not familiar with the operating instructions.

This equipment is not intended to be operated by individuals with reduced physical, sensory or mental capabilities or lack of experience and knowledge of the equipment, unless they have been given supervision or instruction concerning the use of the equipment by individuals responsible for their safety.

Explanation of warning symbols:

1 	2 	3 	4 
5 	6 	7 	8 

1. Hazard warning. Use extreme caution.
2. Important, read the instructions and observe the warnings.
3. Use safety glasses.
4. Wear safety ear muffs.
5. Always disconnect from the power source before repair or maintenance. Unplug the device immediately if damaged.
6. Do not use the saw in rain or high humidity conditions.
7. Hold the saw securely and operate it with both hands.
8. Observe the safety rules for kickback. Avoid cutting with the top of the chain guide bar. If so, the saw is can rotate and may move towards the operator in an uncontrolled manner causing a risk of injury.

Workplace safety

- Keep the work area clean and well lit. Clutter and poor lighting contribute to accidents.
- Before starting work, prepare and clean the area, remove all stones, branches, wires, and other foreign objects that pose the risk of tripping.
- Take particular care when working on inclined terrain or slopes.
- Do not use the electrically powered device in explosive environments created by flammable liquids, gases or dusts. The may generate sparks that can ignite dust or vapours.
- Do not use the electric saw in places with an extreme risk of fire or explosion.
- The saw is not waterproof. Operating it in rain or humid environments may result in electric shock.
- Children and bystanders should not be allowed in areas where an electrically powered device is used. Distraction may result in loss of control of the device. Leave electrically powered garden equipment away from bystanders.
- It is the operator or the user who is responsible for accidents or hazards to other people or the environment.

Electrical safety

- Connect the device only to an electrical supply of characteristics in accordance with the information on the data plate.
- Do not expose electric devices to rain or humid conditions. If water enters the power tool, the risk of an electric shock increases.
- Do not tighten the connection cables. Never use the connection cable to carry, pull electrical equipment or pull

the plug out of the socket. Keep the connection cable away from heat sources, oils, sharp edges or moving parts. Damaged or entangled connection cables increase the risk of an electric shock.

Human safety

- Do not start working with a chainsaw if you feel tired or are under the influence of alcohol, drugs or medication. Full focus is required when using the device, be careful. A moment of inattention while using the power tool can lead to an accident and consequently serious injury or damage to property.
- It is necessary to use personal protective equipment. Always wear eye protection that is close to your face (according to EN 166 or other national regulations). Wear hearing protectors due to the noise generated by the device. It is also recommended to use protective equipment such as a dust mask, anti-slip footwear with uppers, protective gloves and a helmet.
- Clothing should fit closely to the body. Loose clothing, jewellery, a scarf can be caught in moving parts of the saw, which can lead to dangerous accidents. If you have long hair it should be secured and tightened.
- When working, the device can eject various objects, sawdust, pieces of wood at high speed. Risk of injury. It is recommended to use appropriate clothing.
- Remove all wrenches and other set-up tools before operating the power tool. Leaving a wrench in the rotating part of the power tool may result in an injury.
- Avoid working in an unnatural body position. Adopt a correct and stable stance to avoid the risk of loss of balance. This will allow better control of the power tool in unpredictable situations.
- Unintentional start-up should be avoided. Before lifting or moving the device, make sure that the power cord is unplugged from the power supply and the switch is in the off position. Moving electrical equipment with your finger on the switch or connecting it to the mains with the switch switched on can lead to an accident.
- Keep hands and feet away from moving (rotating) parts of the saw.
- Do not raise the working saw above your shoulders. Hold the saw with both hands.
- Keep a safe distance from bystanders



Despite the safe design and using protective measures and additional safeguards, there is always a residual risk of injury during work.

Detailed safety instructions for chainsaws.

- Do not attempt to cut metal.
- Do not use detergents or alcohol to clean the saw. Wipe with a soft dry cloth.
- Do not use accessories not specifically intended for this device and recommended by the manufacturer. The fact that some accessories can be mounted to a power tool is not a guarantee of safe use.
- The accessory mounting system must correspond to the dimensions of the power tool. Tools of improper dimensions cannot be sufficiently shielded or controlled.
- Use personal protective equipment. Depending on the type of work, wear a protective mask covering the whole face, eye protection, e.g. safety goggles. Eyes should be protected from airborne foreign matter ejected during operation. Protect the respiratory tract against dust and vapours with dust masks. The effects of prolonged exposure to noise can lead to hearing loss.
- Be careful that bystanders are kept at a safe distance from the working range of the chain saw. Anyone who is

close to the operating power tool must use personal protective equipment. Chips of the material being cut or cracked work tools can chip and cause injuries even outside the immediate reach zone.

- Never move the power tool when it is in motion. Accidental contact of clothing with a working tool may cut it and come into contact with the operator's body.
- Regularly clean the device's ventilation slots. The motor blower sucks dust into the housing and a large accumulation of metal dust can cause an electrical hazard. Blocked ventilation slots of the device can also lead to overheating of the power tool.
- **Before starting each time, make sure that:**
 - the device is assembled correctly, according to the instructions;
 - the cutting tool is in good condition; the chain attachment must be checked regularly for damage and wear;
 - safety devices (e.g. cutter guard, housing, handle, motor switch) are in good condition and working properly.
- Only move the chainsaw away from the workpiece when the cutting chain is running.
- Always use the support claws as a support point when cutting through. Holding the saw by the main handle, guide it with the auxiliary handle.
- If it is not possible to cut the material at one time, pull the saw slightly back, move the support claw and continue cutting by lifting the main handle of the saw slightly.
- Be extra careful when the chain gets stuck. This may result in the kickback towards you.
- After the saw is switched off, the chain remains in motion for some time. Caution must be maintained.
- The rotating chain of the saw heats up and expands. Without proper lubrication and tension, it can jump off the guide bar or break off. Danger of serious accident and damage to property.

Always turn off the saw when:

- is left unattended;
- before adjustment and maintenance;
- after it being hit by a foreign object;
- abnormal vibrations of the device are sensed.

General information

- The device is intended for house gardening use only as described and protected by these instructions for use. It can be used for pruning branches, cutting firewood and other applications requiring pruning of wood.
- Other uses can be dangerous to users and can cause damage to the device. Do not use the device for felling trees, for cutting materials other than wood and wood-based materials.

Charger and battery pack safety instructions

To connect the battery pack for charging, insert the battery pack into the charger dock and plug the charger to a power source.

- Keep the charger away from rain and moisture. The charger may only be used indoors.
- Keep the charger clean.
- Do not operate the charger on readily combustible objects and surfaces (e.g. paper) or areas with flammable/explosive atmospheres.
- Always ensure adequate ventilation when charging; fumes or battery acid can be released from the battery

pack if the latter is compromised by poor handling or damage.

- When charging is complete, unplug the charger from the power source. Do not leave it connected to a power source for longer than necessary.
- Store and charge the battery pack in a dry place and make sure it will not be flooded by water.
- Keep the battery pack terminals clean and free of dirt.
- Protect the battery pack from shocks and moisture; never open the battery pack or expose it to any damage.
- The battery pack charge level can be displayed with the number of charge indicator LEDs by pressing the state of charge indicator button on the pack; if required, charge the battery pack for as long as required to reach the desired charge level and the expected operating time of the cordless power tool.

Kickback:

The kickback is sudden and uncontrollable, the device reacts to the jamming or blockage of the cutting device. Jamming or blocking results in a sudden jerk, in the direction opposite to the rotation of the disc.

Kickback is the result of not reading the safety instruction.

To avoid kickback, follow the safety instructions and use methods to prevent it

Methods to prevent kickback.

a) Hold the device by the two handles firmly and securely. Always use the additional handle. – The operator can control the torque and the resultant kickback forces if appropriate precautions are taken.

b) Keep hands away from the cutting part of the device.

CAUTION: The device may injure the user if used improperly.

c) The user should stand in such a position that, in the event of a kickback, they are not within reach of the grinder disc.



If a crossed-out waste bin symbol appears on the appliance, this indicates that the product is covered by European Directive 2012/19/EU. Familiarise yourself with the requirements of your local electrical and electronic waste collection system. Follow your local regulations. Do not dispose of this product with household waste. Proper disposal of the old product will prevent potential negative effects on the environment and human health. Information on environmental protection

The packaging contains only the necessary elements. Every effort has been made to ensure that the three packaging materials are easy to separate: cardboard (box), polystyrene foam (internal protection) and polyethylene (handbags, protective sheet). The device is manufactured from recyclable materials and can be used again after its disassembly by a specialized company. Observe local regulations for the disposal of packaging materials, waste batteries and unnecessary equipment.



The product is manufactured from high quality materials and components that can be recycled and reused.

Design of the electric chain saw.

1. Switch lock button
2. Saw guard
3. Drive guard retaining nut

4. Chain guard
5. Chain bar
6. Chain
7. Chain tensioner bolt
8. Base plate
9. Hand guard
10. Power switch
11. Adjustment wrench
12. Battery pack
13. Air vent
14. Handle grip
15. Chain bar guard
16. Chain sprocket
17. Chain tensioner bolt pin

Storage

Store cordless tools in a dry place and out of the reach of children. For safety concerns, remove the battery pack from the cordless tool before storage. When left connected to a cordless tool, the battery pack is drained faster.

Protect the battery pack and power tools from frost, high temperatures, moisture and water.

Do not attempt to repair a failed battery pack. Only the original manufacturer or an authorised service may repair the battery pack.

Recharge the battery packs using only the chargers specified by the manufacturer.

Storage or operation of the battery pack in unsuitable conditions may result in a battery acid leak.

Never attempt to use a damaged or modified battery pack. Damaged or modified battery packs may cause unpredictable effects during operation, resulting in health hazards. Keep the battery pack away from open flames and high temperature. If exposed to fire or temperatures above 130°C, the battery pack may explode.

Installing the battery pack

Tip: Using a battery pack incompatible with the power tool may result in abnormal performance or failure of the power tool.

Insert the battery pack into the handle until the battery pack latch clicks (the battery pack should be flush with the receptacle edges on the power tool).

Operation

The chainsaw is used for pruning small trees and branches.

Removing and installing the chain bar

1. Turn off the chainsaw and remove the battery pack.
2. Remove the nut (3).
3. Remove the saw guard (2).
4. Release the chain tensioner bolt.
5. Remove the chain bar together with the chain.
6. Remove the worn chain from the chain bar.
7. Install a new chain onto the chain bar so that the arrow marks on the chain links on the top side of the bar are

towards the chain running direction.

8. Install the chain bar with the chain on it and engage the chain links with the drive sprocket.
9. The chain bar features a slot which must engage over the pin. If the pin is located too far out, release the chain tensioner bolt.
10. Once the chain bar is properly installed, tighten the chain tensioner bolt (7).
11. Reinstall the chain guard and tighten the drive guard retaining nut.

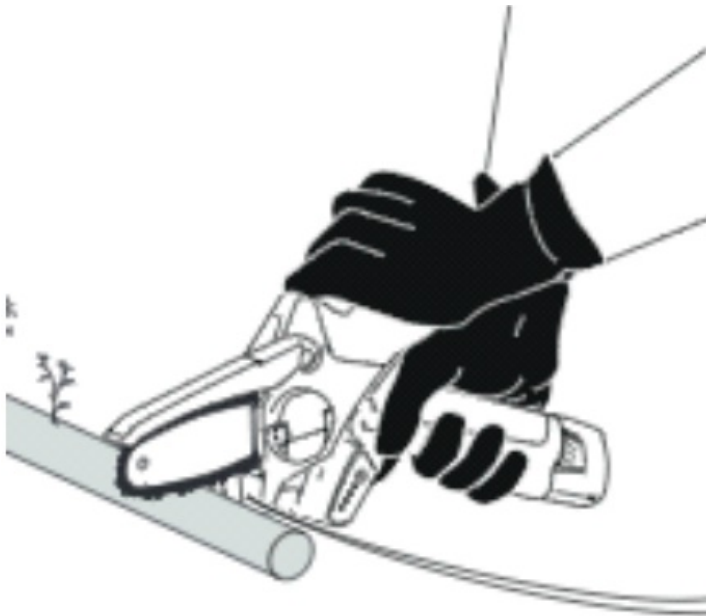
Lubricating the chain

Chain oil or biodegradable oil provides lubrication and cooling for the saw chain.

Turn off the saw and remove the battery pack. Place the saw on a flat surface with the drive sprocket guard upwards. Clean the chain bar and the chain with a painter's brush, a soft scrubbing brush, or a resin remover. Apply multi-purpose oil to the area between the chain bar and the chain. Install the battery pack. Power on the saw. The running chain will spread the multi-purpose oil around it. The chain is now lubricated.

Handling and guiding the chainsaw

Hold the main handle grip (14) firmly with the thumb wrapped around it. Use your other hand to hold the chainsaw as shown in the figure.



Storing the chainsaw

Before storing the chainsaw, it shall be cleaned, dry, and relubricated.

Remove the battery pack from the tool and replace the chain guard.

Keep the chainsaw out of the reach of children.

SAWING – GENERAL TIPS

Take a 15 minute break after each 15 minutes of work.

Read the safety rules before starting work and cutting. There is a risk of kickback – the saw can kick back towards you. Danger of serious or fatal accident.

Start cutting when the saw has reached its full speed.

Do not cut through the area around the top quarter of the guide tip.

Do not apply excessive pressure when cutting. Apply gentle pressure when the saw is running at its maximum speed.

If the guide bar is stuck in the material, do not pull it out by force, use a wedge or lever.

Always ensure that your feet are well supported. Do not stand on logs of trees. Note that the log being cut may twist.

Be careful of the springing of the branch being cut.

CLEANING AND MAINTENANCE



NOTE! Make sure that the device is switched off and disconnected from the power source before starting cleaning or maintenance.

After finishing work, the device should be cleaned of debris and dust.

Clean the housing of dust using a delicate brush, paint brush or cloth.

Cleaning with a damp cloth is allowed, but only if the device is dried immediately. Protect metal parts with oil.

Clean the ventilation slots regularly. Use compressed air or a vacuum cleaner.

After every 5 hours of operation, check the condition of the guide bar and chain. Remove sawdust from the guide bar groove and the oil hole. Lubricate the chain guide sprocket through the guide lubrication hole (6).

Take care that the chain is always sharp. If a blunt chain is used, the guide and other structural components of the device will wear more quickly. In the extreme situation, the chain may break. It is recommended to have the chain sharpened by trained professionals.

In case of prolonged storage keep the device in a well-ventilated room, free of moisture and protected from dust. Make sure to put the guard on the cutting unit and keep the device out of the reach of children.

TECHNICAL DATA

Voltage: 18 V

Chain bar total length: 156 mm

Chain speed: 4.7 m/s-1

Rotational speed: 3200 min

Max. cutting depth: 110 mm

Accessories: 1 x belt clip, 1 x screwdriver (for chain tensioner adjustment)

Battery type: 18 V Li-Ion; BP1840 4.0 Ah recommended (not included)

Dimensions: 41×11.5×16 cm

Weight: 1.56 kg

Noise

Typical A-weighted noise level measured in accordance with ISO/TR 11688-1:

Sound pressure level (LpA): 70.12 dB (A) ; LwA: 90.12 dB (A)

Measurement uncertainty (K): 3 dB (A) ; KWA: 3 dB (A)

Noise level during operation may exceed: 90.12 dB (A).

Wear hearing protection!

Vibrations

Total vibration value measured in accordance with En1299:

2 Vibration emission: ah = 1.387 / 1.448 m/s² , 2 Measurement uncertainty (K): Km=1.5 m/s²

Permissible Operating Time: 15 minutes of operation, 30 minutes off.

The declared vibrations has been measured according to the standard test method and can be used to compare tools.

The declared vibrations can also be used in the initial exposure assessment.



