



BLAUPUNKT BPA-HX80DSP 8Ch Class D DSP Amplifier User Manual

[Home](#) » [Blaupunkt](#) » BLAUPUNKT BPA-HX80DSP 8Ch Class D DSP Amplifier User Manual 

Contents

- [1 BLAUPUNKT BPA-HX80DSP 8Ch Class D DSP Amplifier](#)
- [2 Panel Features](#)
- [3 SYSTEM 1: LOW INPUT](#)
- [4 Malfunction: no function](#)
- [5 SPECIFICATIONS](#)
- [6 Documents / Resources](#)
 - [6.1 References](#)
- [7 Related Posts](#)



BLAUPUNKT BPA-HX80DSP 8Ch Class D DSP Amplifier

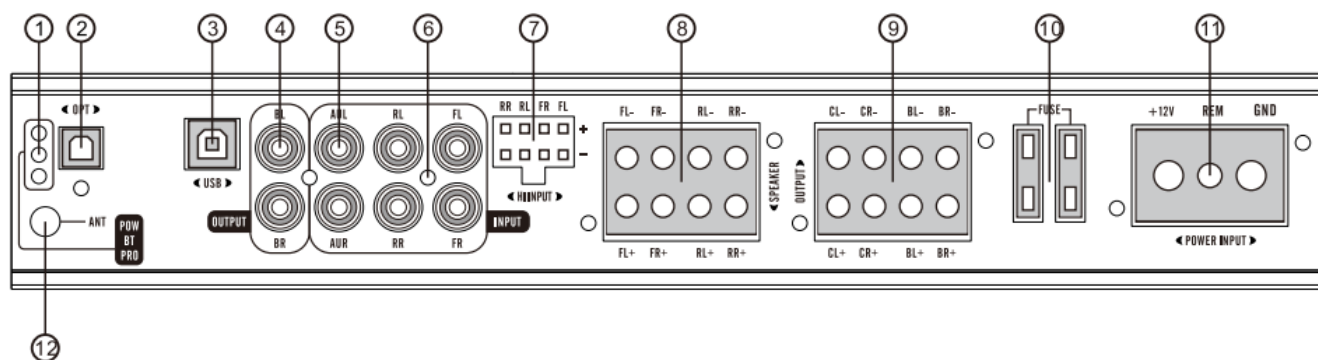


PLEASE READ CAREFULLY BEFORE INSTALLING OR OPERATING THIS UNIT

WARNING

Make sure you choose a suitable place to mount the unit. The position should be completely dry with a good circulation of air, and from a mechanical point of view very stable.

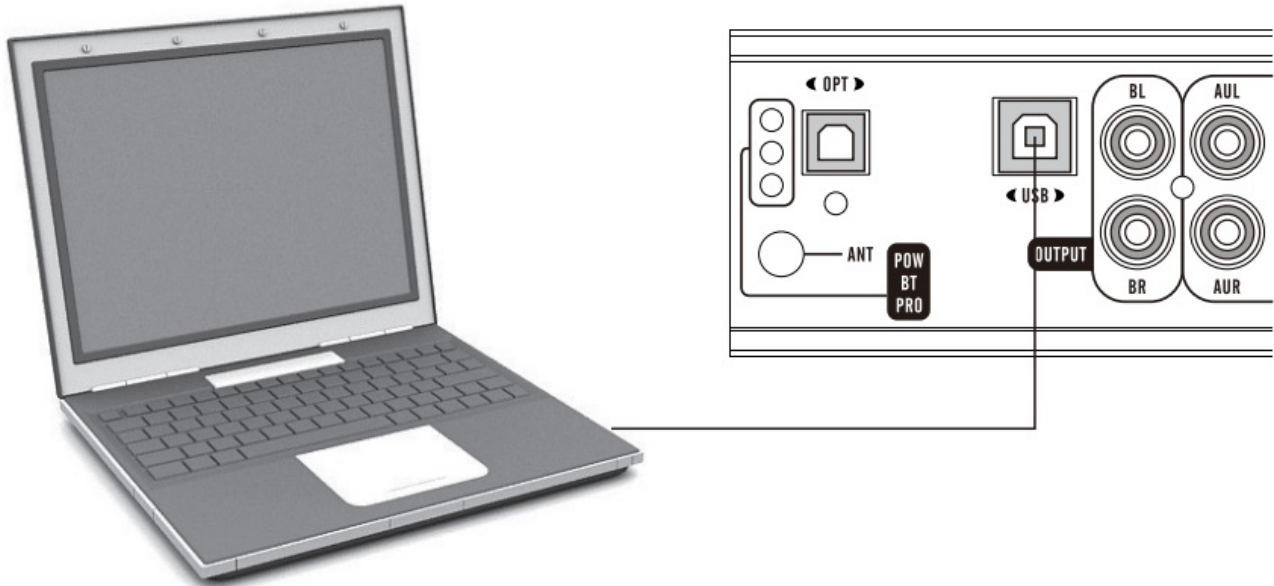
Panel Features



1. LED
2. Optical input
3. USB port
4. Signal output
5. AUX signal input
6. Low level signal input
7. High level signal input
8. Speaker output

9. Speaker output
10. .Fuse
11. Power input
12. External Bluetooth antenna

PC CONNECTION

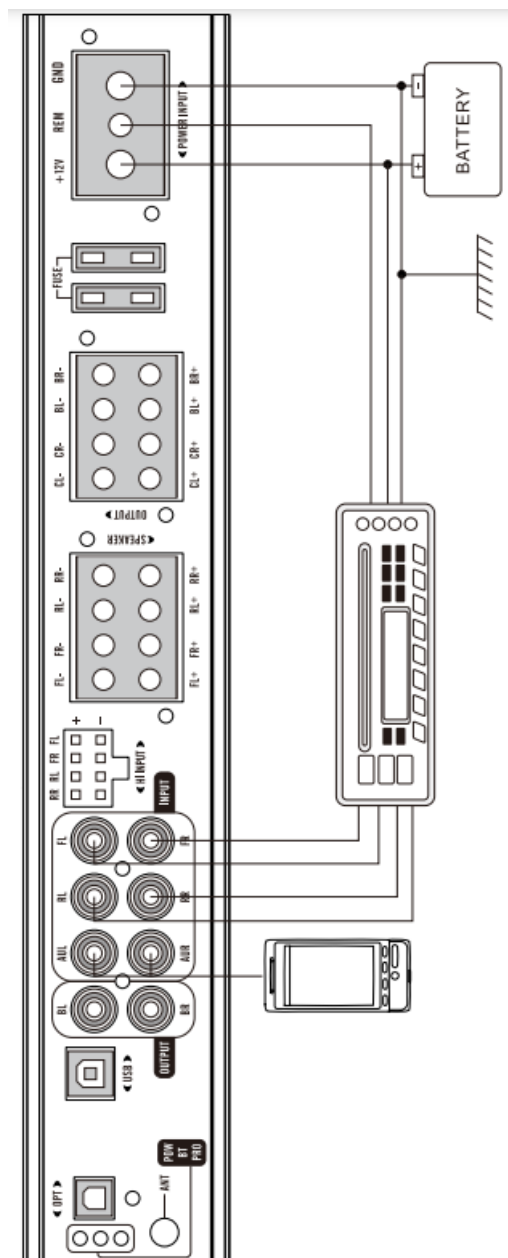


1. Please connect to PC with the enclosed USB cable, OS windows XP, VIST, WINS, WINI 0 supported.
2. Installation CD: BPA-HX80DSP program and BPA-HX80DSP program driver.
3. Launch the DSP program to automatically search for the device. The connection success words will be displayed in the upper left corner of the software interface.

If connection fails

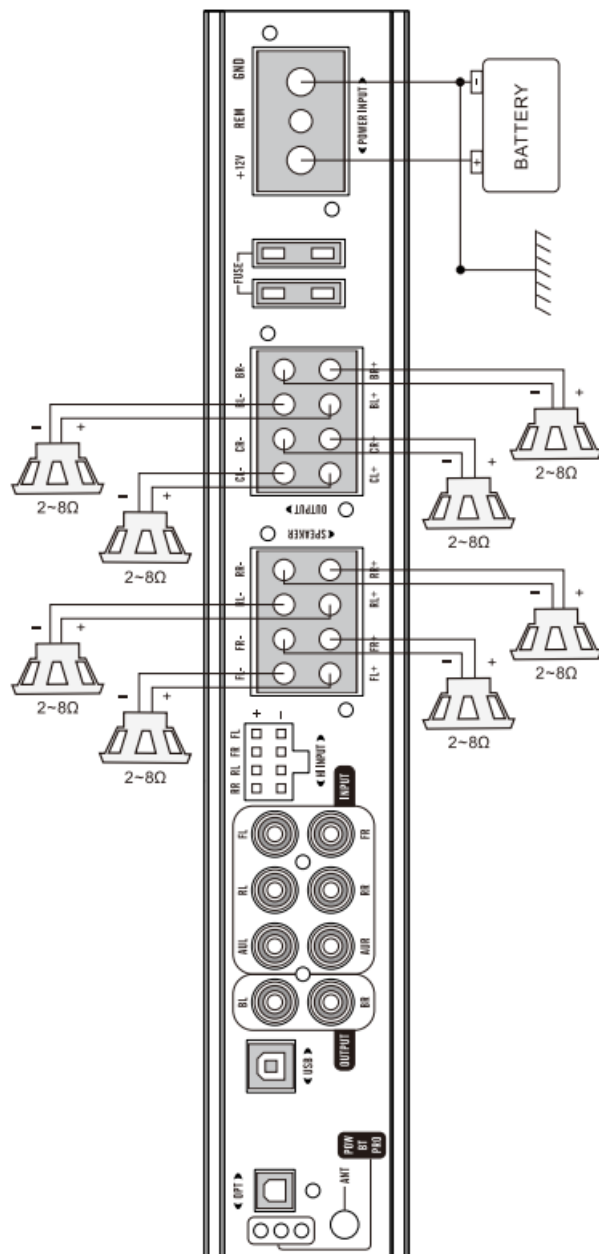
1. CD Check whether the driver is installed successfully
2. Check whether there is a problem for USB cable or USB port
3. Check whether the device is in working condition.

SYSTEM 1: LOW INPUT

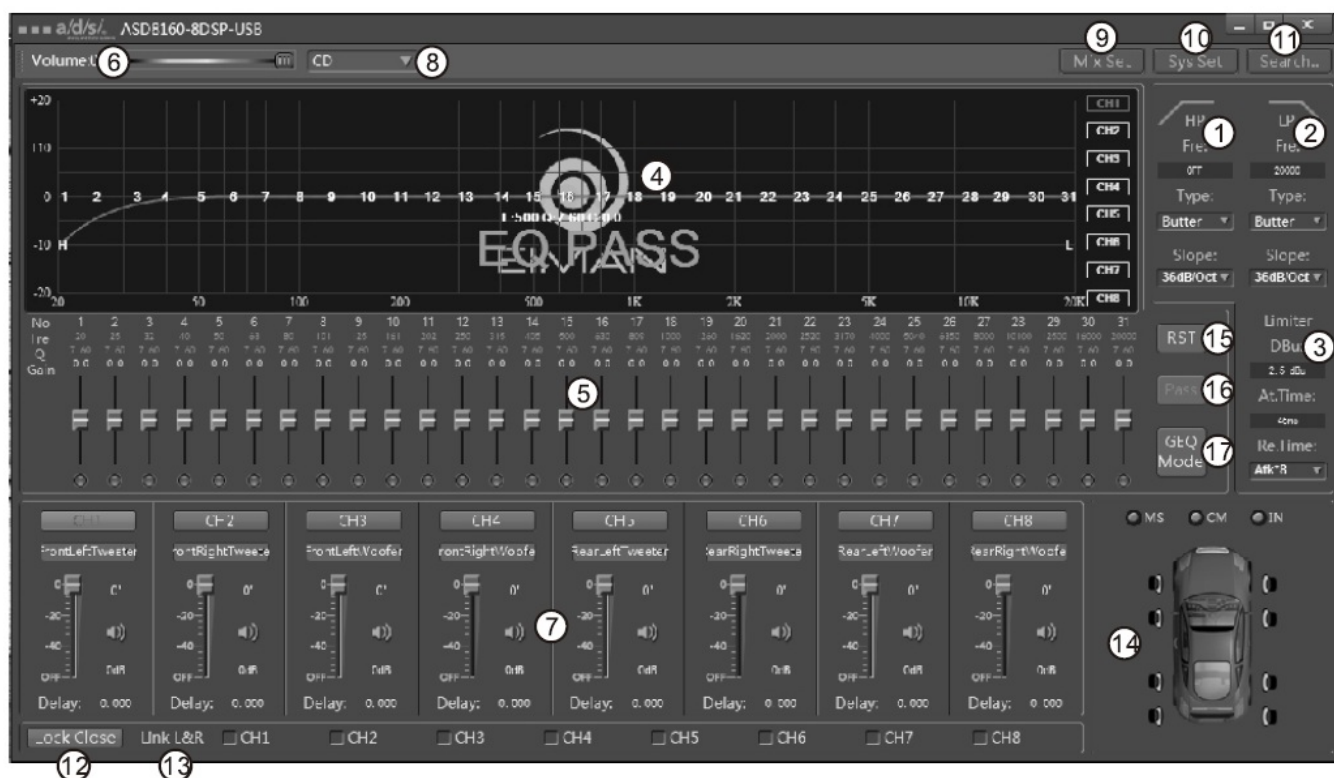


SYSTEM 2: HIGH INPUT

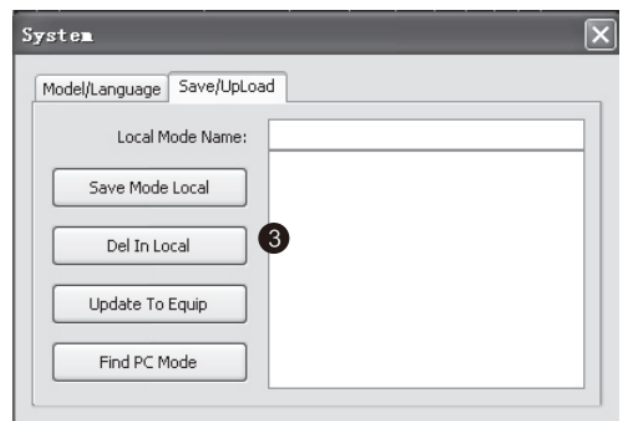
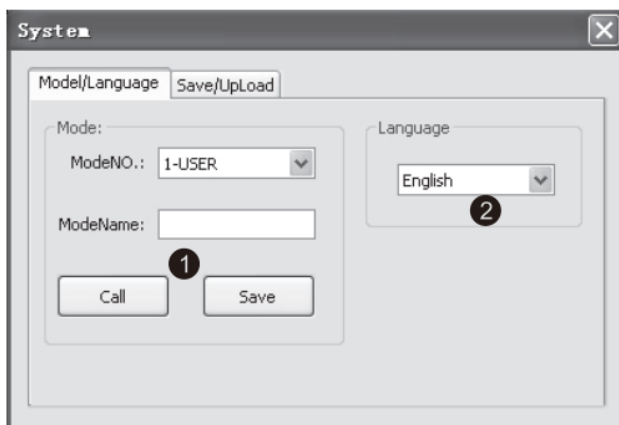




SYSTEM 5: 8 CHANNEL AMPLIFIER



1. High-pass filter
2. Low-pass filter
3. Signal amplitude
4. Graphic curve visual window
5. 31 segment equalizer, optional parameter EQ
6. Master volume control
7. Channel independent control volume, phase, mute
8. Mode switch
9. Mix setting
10. System settings
11. Connect/ Disconnect
12. Switch
13. Output alignment
14. Channel delay setting, in(cm. ms. Inches)
15. Reset EQ
16. Bypass
17. GEQ/ PEQ switch



1. The scene mode is saved in this unit, and 8 modes can be saved.
2. Software interface language selection: Chinese or English.
3. Scene mode saved to the PC, you can load the PC's mode to the device, and you can also load the mode from the device to the PC

Malfunction: no function

Reason Solution:

1. The power supply connection of the device is not correct Recheck
2. The cabels have no mechanical or electrical contact Recheck
3. The remote turn-on connection from the head unit to the processor is not correct Recheck
4. Defective Fuses. Incase of replacing the fuses, ensure the correct fuse rating Replace Fuses

Malfunction :no signal on loudspeakers, but power LED lights up

Reason Solution

1. The connections of the speakers or the RCA audio cables are not correct Recheck
2. The speaker cables or the RCA audio cables are defective Replace cables
3. The loudspeakers are defective Replace speakers
4. HP controller in LP/BP operation is adjusted to high Turn down controller
5. No signal from the head unit Check head unit settings
6. A wrong input source under INPUT SOURCE is selected, which is not connected (e.g. AUX IN) Check selection
7. For example on one or more channels, "Mute" is activated in the DSP software. Check settings
8. The volume level on the remote controller is adjusted too low Turn up the volume level on the remote

Malfunction :one or more channels or controllers are without function I faulty stereo stage

Reason Solution

1. The balance or fader controller of the head unit is not in the center-position Turn to center-position
2. The connections of the speakers are not correct Recheck
3. The loudspeakers are defective Replace speakers
4. HP controller in operation is adjusted to high Turn down controller
5. For example on one or more channels "Delay" or "Phase" is incorrectly set in the DSP software. Check settings

Malfunction: distortions on the loudspeakers

Reason Solution

1. The loudspeakers are overloaded Turn down the level
2. Amplifier is clipping Turn down the level on the head unit Switch off loudness on the head unit Reset bass EQ on the head unit

Malfunction: no bass or stereo sound

Reason Solution

1. Interchange of loudspeaker cable polarity Reconnect
2. The RCA audio cables are loose or defective Reconnect or replace the cables
3. For example on one or more channels "Delay" or "Phase" is incorrectly set in the DSP software. Check settings

Malfunction: hiss or white noise on the loudspeakers

Reason Solution

1. The level controllers in the DSP software are turned up too loud. Turn down the level
2. The treble controller on the head unit is turned up Turn down the level on the head unit
3. The speaker cables or the RCA audio cables are defective Replacing the cables
4. The hissing is caused by the head unit Check the head unit

Malfunction: no subwoofer sound


Reason Solution

1. The volume of the subwoofer output (channel G /H and SUB OUT) is set too low on the remote control. Press the remote controller and hold.
2. DSP Software is set incorrectly. Turn up the volume. (Refer to page 21). Check all settings.

SPECIFICATIONS

Amplifier section

RMS(4 Ohms):	60WX6+80WX2
RMS(2 Ohms):	90WX6+ 120WX2
TYPE:	8CH/Amplifier;8CH/DSP
Frequency Range (-3dB)	20 Hz - 20 kHz
Signal-to-Noise Ratio	>100 dB
Channel Separation	>60 dB
THD&N	0.05%
Input Impedance	Low=22K Ohms High=100 Ohms Phase Shift 0°/180° XP SP3, Vista, 7, 8, 10 8 Presets, Gain -60dB - 0dB 6 - 48 db/Oct. HPF/BPF/LPF Time Delay: 0-20ms / 0-692cm All Equalizer Frequency adjustable 8 x 31-Band Equalizer, -20- 20dB, Q adjustable Setting range 20 - 20.000 Hz
Signal Input	RCAX6/AUX RCAX2
Signal Output	For Master Volume, Subwoofer Volume,
Remote Controller	Mode Selection
Dimensions	311X145X51mm

	<p>BLAUPUNKT BPA-HX80DSP 8Ch Class D DSP Amplifier [pdf] User Manual</p> <p>BPA-HX80DSP, BPA-HX80DSP 8Ch Class D DSP Amplifier, 8Ch Class D DSP Amplifier, Class D DSP Amplifier, DSP Amplifier, Amplifier</p>
----------------------------------------------------------------------------------	--------------------------------------------------------------------------------------------------------------------------------------------------------------------------------------------------------------------------------

References

- [User Manual](#)