



BLAUPUNKT Bluebot App on Google Play Installation Guide

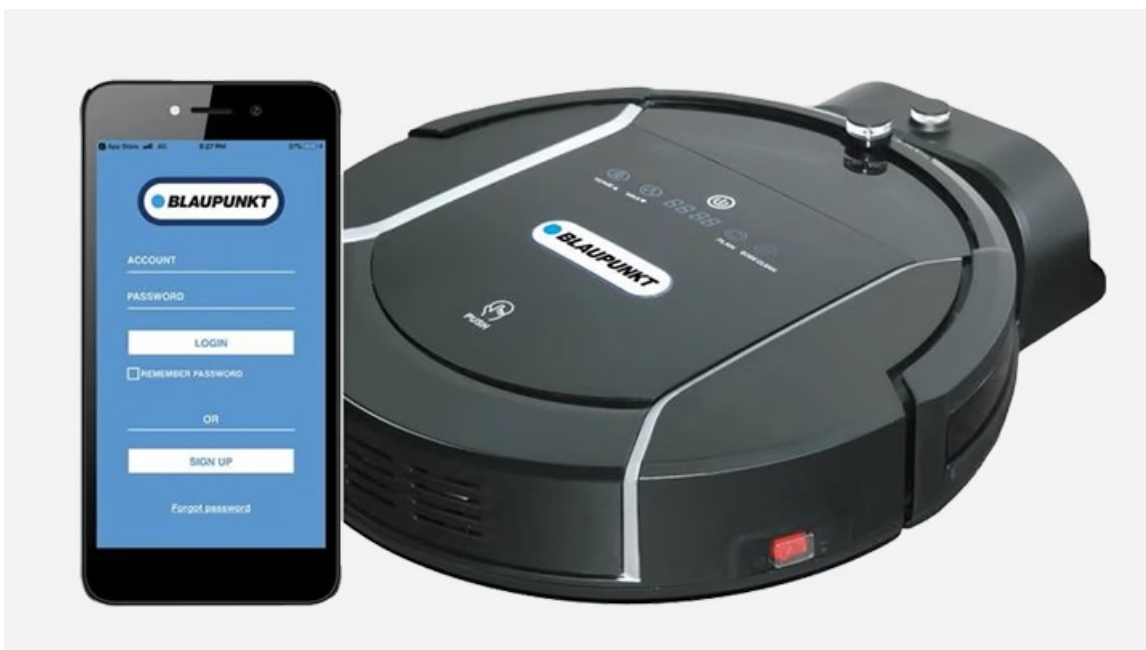
[Home](#) » [BLAUPUNKT](#) » BLAUPUNKT Bluebot App on Google Play Installation Guide 

Contents

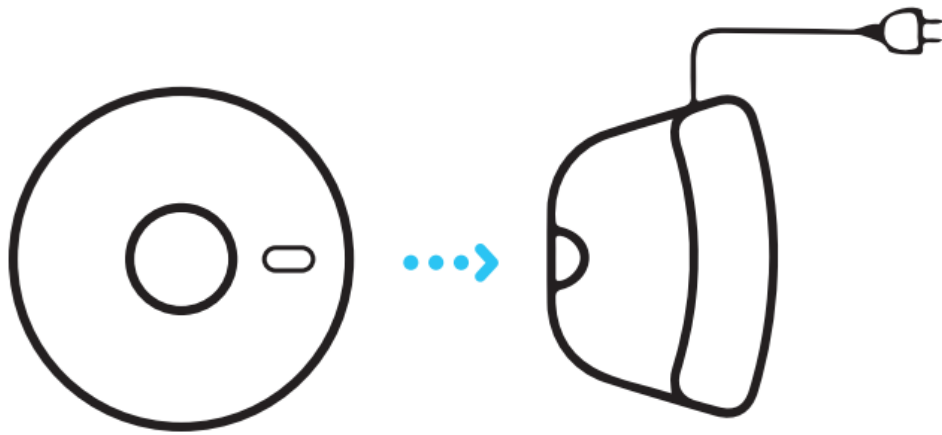
- [1 BLAUPUNKT Bluebot App on Google Play Installation](#)
- [2 Documents / Resources](#)
- [3 Related Posts](#)



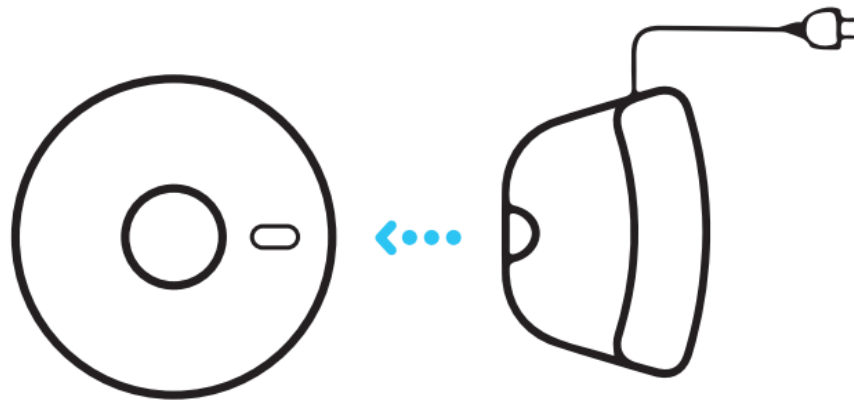
BLAUPUNKT Bluebot App on Google Play Installation



1. Place the robot in the charging station to charge and make sure it's fully charged before use.



2. Remove the robot from the charging station.



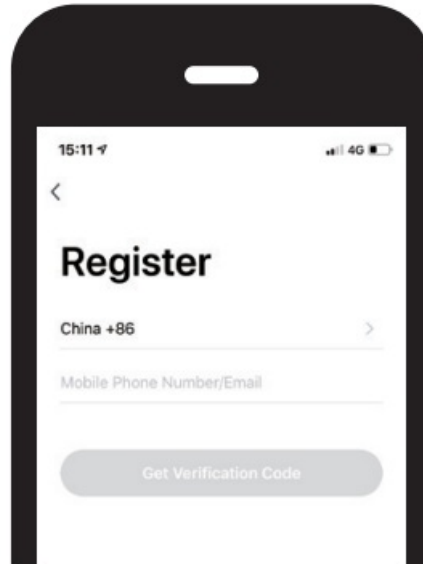
3. Make sure the Robot is on, by holding in the 'On button' for a few seconds on top of the robot. Wait until the robot has started fully.



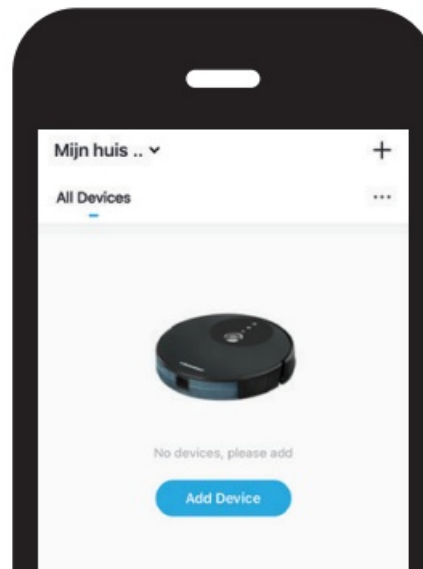
4. Download the Bleubot app. The app can be found in the Appstore and Google Play.



5. Register a new account if you are not yet an existing user.



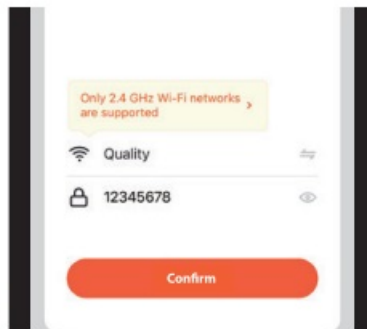
6. Open the Bluebot app and press the '+' icon to add your device.



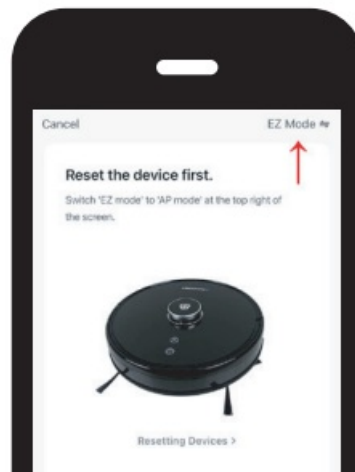
7. Select the device you want to add.



8. Select your wifi network enter the password and confirm



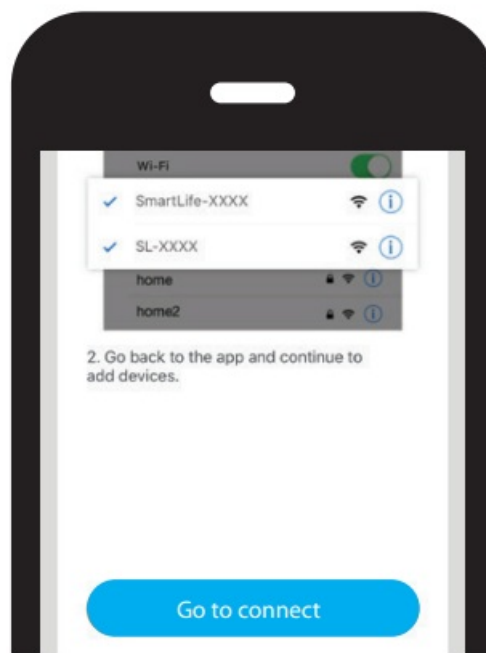
9. Select 'AP mode' in the upper right.



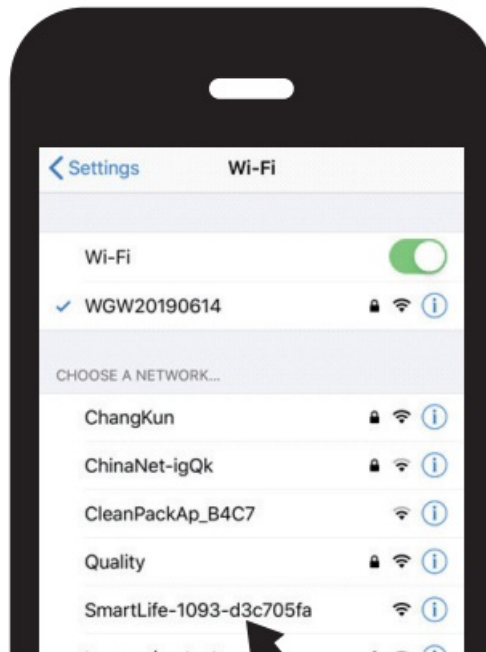
10. After your registration, make sure the robot is removed from it's charging station. Turn on your Robot by pressing the 'On button' . After that is done, press both the 'Home button' and 'On button' simultaneously for more than 3 seconds connection.



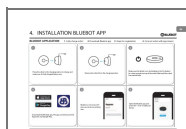
11. Press on the 'Go to connect' button in the bottom of your screen.



12. Select the 'SmartLife xxx' network from the list and return to the Bluebot app. Your robot will now connect to the App.



Documents / Resources



[BLAUPUNKT Bluebot App on Google Play](#) [pdf] Installation Guide
Bluebot App on Google Play

Manuals+.