



# BLACKVUE DR770X Box Series 3-Channel Stealthy Hidden Dash Cam User Guide

[Home](#) » [BLACKVUE](#) » BLACKVUE DR770X Box Series 3-Channel Stealthy Hidden Dash Cam User Guide 




## DR770X Box Series 3-Channel Stealthy Hidden Dash Cam User Guide

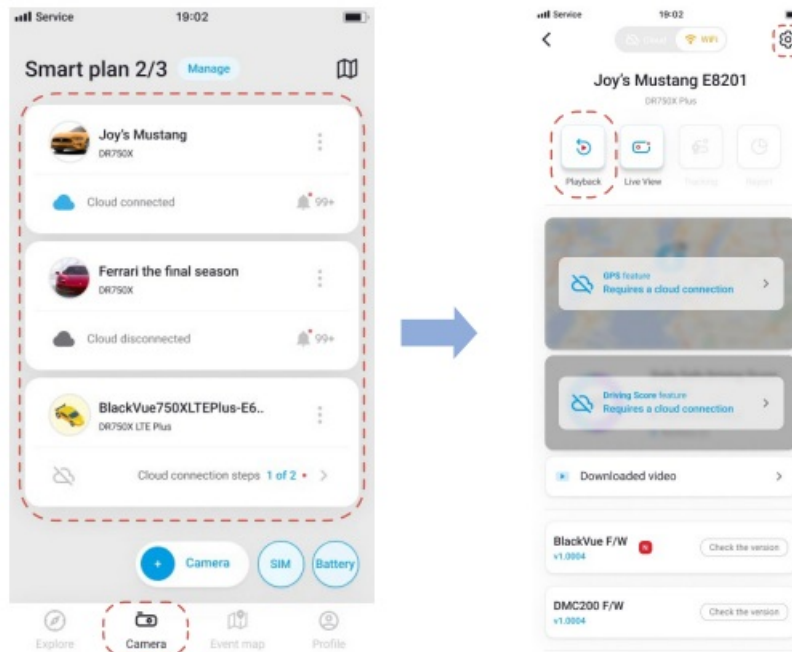
### Contents

- [1 Playing video files and changing settings](#)
- [2 Using BlackVue Viewer](#)
- [3 Tips for optimal performance](#)
- [4 Documents / Resources](#)
  - [4.1 References](#)

### Playing video files and changing settings

After installation is complete, follow the below steps to play video files and change settings.

- A. Select Camera on your Global Navigation Bar.
- B. Tap your dashcam model in the camera list.
- C. To play video files, press Playback and tap the video you want to play.
- D. To change the settings, press  settings.

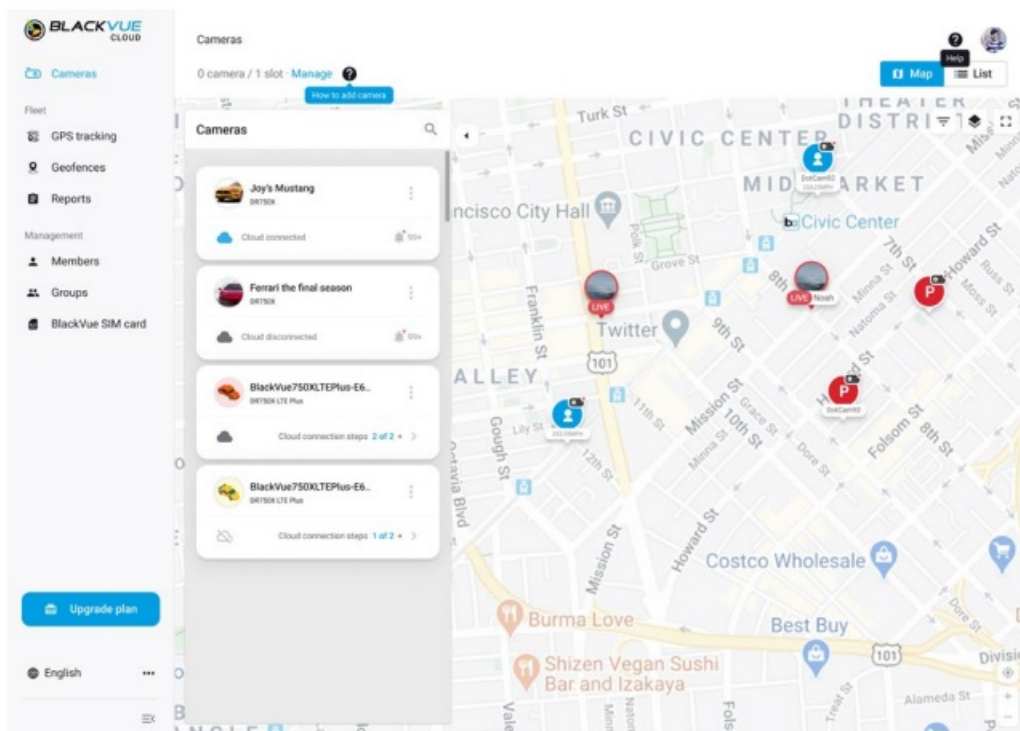


**Note**

- For more information about BlackVue app, go to <https://cloudmanual.blackvue.com>.

### Using BlackVue Web Viewer

To experience the camera features in the Web Viewer, you must create an account and your dashcam must be connected to the Cloud. For this setup, it is recommended to download the BlackVue app and follow the instructions including optional steps in Using BlackVue App prior to accessing the Web Viewer.



- Go to [www.blackvuecloud.com](http://www.blackvuecloud.com) to access BlackVue Web Viewer.
- Select Start Web Viewer. Enter the login information if you have an account, otherwise press Sign up and follow the guidelines in the web Viewer
- To play video files after login, select your camera in the camera list and press Playback. If you have not already added your camera, press Add camera and follow the guidelines in the Web Viewer.

D. Select the video you want to play from the video list.

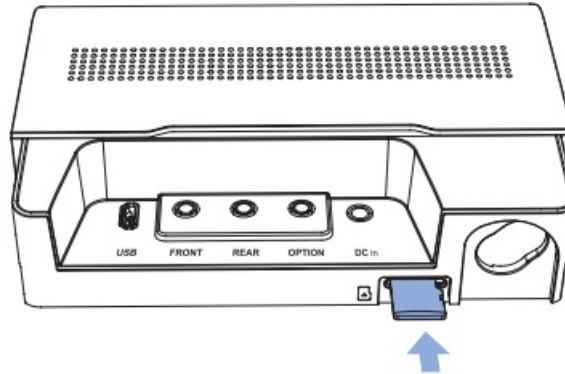
**Note**

- For more information about BlackVue Web Viewer features, refer to the manual from <https://cloudmanual.blackvue.com>.

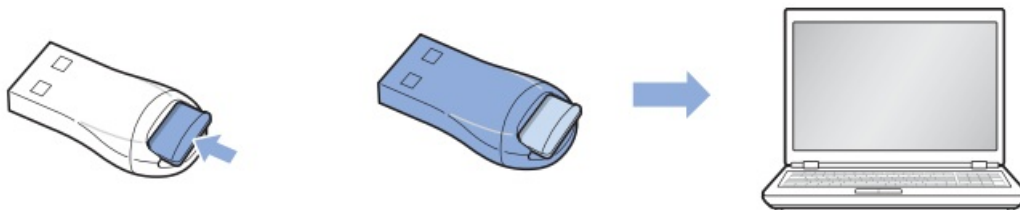
## Using BlackVue Viewer

### Playing video files and changing settings

A. Remove the microSD card from the main unit.




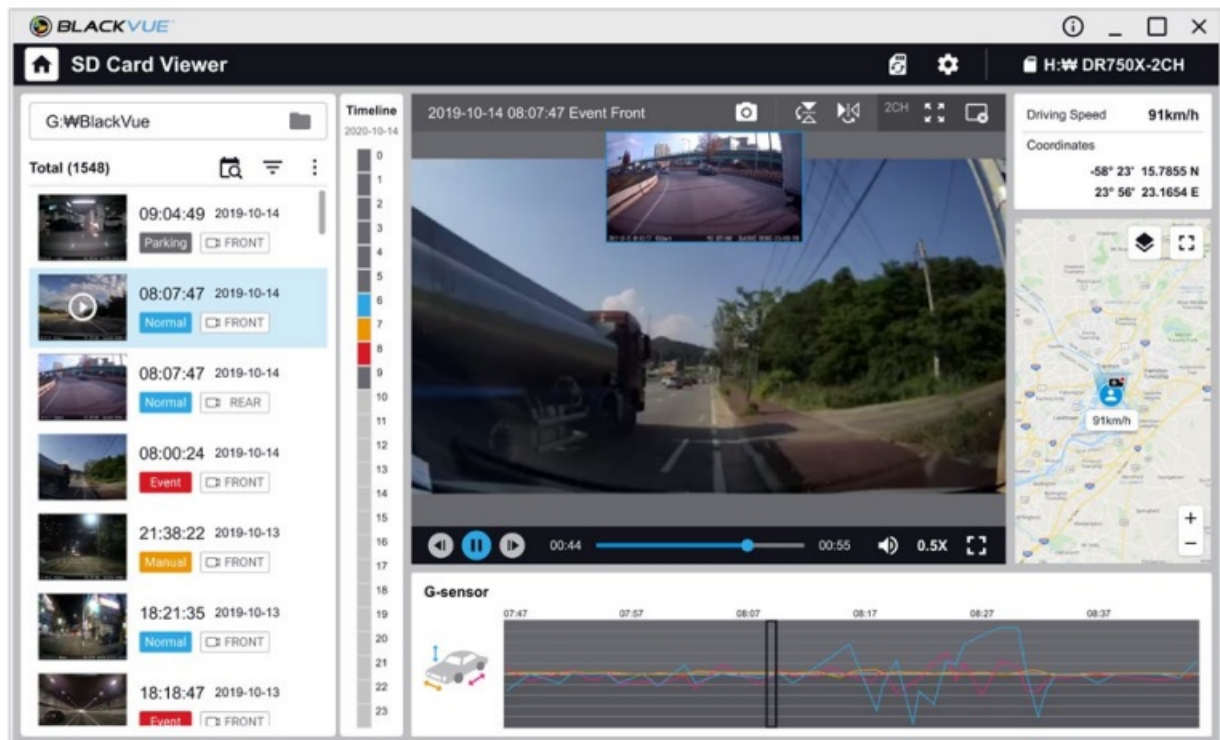
B. Insert the card into the microSD card reader and connect it to a computer.



C. Download BlackVue Viewer program from [www.blackvue.com](http://www.blackvue.com) > Support > Downloads and install it on your computer.

D. Run BlackVue Viewer. To play, select a video and click on the play button or double click the selected video.

E. To change settings, click on the  button to open the BlackVue settings panel. Settings that can be changed include Wi-Fi SSID & password, image quality, sensitivity settings, voice recording on/off, speed unit (km/h, MPH), LEDs on/off, voice guidance volume, Cloud settings etc.



Windows/macOS Viewer



#### Note

- For more information about BlackVue Viewer, go to <https://cloudmanual.blackvue.com>.
- All images shown are for illustration purpose only. Actual program may differ from images shown.


### Tips for optimal performance

For stable operation of the dashcam, it is recommended to format the microSD card once a month.

Format using BlackVue App (Android/iOS): Go to BlackVue App >> Format microSD card and format the microSD card.

Format using BlackVue Viewer (Windows):

Download BlackVue Windows Viewer from [www.blackvue.com](http://www.blackvue.com) > Support > Downloads and install it on your computer. Insert the microSD card into the microSD card reader and connect the reader to your computer. Launch

the copy of BlackVue Viewer that is installed on your computer. Click the Format  button, select the card drive and click OK.

Format using BlackVue Viewer (macOS):

Download BlackVue Mac Viewer from [www.blackvue.com](http://www.blackvue.com) > Support > Downloads and install it on your computer. Insert the microSD card into the microSD card reader and connect the reader to your computer. Launch the copy of BlackVue Viewer that is installed on your computer. Click the Format button and select the microSD card from the list of drives in the left frame. After selecting your microSD card select the Erase tab in the main window. Select "MS-DOS (FAT)" from the Volume Format drop-down menu and click Erase.

Only use official BlackVue microSD cards. Other cards may have compatibility issues.

Regularly upgrade the firmware for performance improvements and updated features. Firmware updates will be made available for download at [www.blackvue.com](http://www.blackvue.com) > Support > Downloads.

### Customer Support


For customer support, manuals and firmware updates please visit [www.blackvue.com](http://www.blackvue.com)

You can also email a Customer Support expert at [cs@pittasoft.com](mailto:cs@pittasoft.com)

Model Name	DR770X Box Series
Color/Size/Weight	Main unit : Black/ Length 130.0 mm x Width 101.0 mm x Height 33.0 mm / 209 g Front : Black / Length 62.5 mm x Width 34.3 mm x Height 34.0 mm / 43 g Rear : Black / Length 63.5 mm x Width 32.0 mm x Height 32.0 mm / 33 g Rear Truck : Black / Length 70.4 mm x Width 56.6 mm x Height 36.1 mm / 157 g Interior IR: Black / Length 63.5 mm x Width 32.0 mm x Height 32.0 mm / 34 g EB-1 : Black / Length 45.2 mm x Width 42.0 mm x Height 14.5 mm / 23 g
Memory	microSD Card (32 GB/64 GB/128 GB/256 GB)
Recording Modes	Normal recording, Event recording (when impact is detected in normal and parking mode), Manual recording and Parking recording (when motion is detected) When using Hardwiring Power Cable, ACC+ will trigger parking mode. When using other methods, G-sensor will trigger parking mode.
Camera	Front : STARVISI* CMOS Sensor (Approx. 2.1 M Pixel) Rear/Rear Truck : STARVIS' CMOS Sensor (Approx. 2.1 M Pixel) Interior IR : STARVIS' CMOS Sensor (Approx. 2.1 M Pixel)
Viewing Angle	Front : Diagonal 139°, Horizontal 116°, Vertical 61° Rear/Rear Truck : Diagonal 116°, Horizontal 97°, Vertical 51° Interior IR: Diagonal 180°, Horizontal 150°, Vertical 93°
Resolution/Frame Rate	<Front – Rear/Rear Truck – Interior IR> Full HD (1920×1080) @ 60 fps – Full HD (1920×1080)@ 30 fps – Full HD (1920×1080) @ 30 fps *Frame rate may vary during Wi-Fi streaming.
Video Codec	H.264 (AVC)
Image Quality	Highest (Extreme): 16 + 10 + 8 Mbps Highest:12 + 10 + 8 Mbps High:10 + 8 + 6 Mbps Normal: 8 + 6 + 4 Mbps
Video Compression Mode	MP4
Wi-Fi	Built-in (802.11 b.g.n)
GNSS	External (Dual Band : GPS, GLONASS)
Bluetooth	Built-in (V2.1+EDR/4.2)
LTE	External (Optional)
Microphone	Built-in
Speaker (Voice Guidance )	Built-in
LED Indicators	Main unit : Recording LED, GPS LED, BT/Wi-Fi/LTE LED Front : Front & Rear Security LED Rear: Front & Rear Security LED Rear Truck: None Interior IR: Front&Rear Security LED EB-1 : Operating/Battery low voltage LED



Wavelength of IR camera light	Rear Truck : 940nm (6 Infrared (IR) LEDS) Interior IR : 940nm (2 Infrared (IR) LED S)
II. Button	EB-1 button : Press the button – manual recording.
I.. Sensor	3-Axis Acceleration Sensor
7 Backup Battery	Built-in super capacitor
kInput Power	DC 12V-24V (3 pole DC Plug(03.5 x 01.1) to Wires (Black: GND / Yellow: B+ / Red: ACC)
P Power Consumption	Normal Mode (GPS On / 3CH) : Avg. 730mA / 12V Parking Mode (GPS Off/ 3CH) : Avg. 610mA / 12V * Approx. 40mA increase in current when Interior Camera IR LEDs are ON. * Approx. 60mA increase in current when Rear Truck Camera IR LEDs are ON. * Actual power consumption may vary depending on use conditions and environment.
Operation Temperature	-20°C – 70°C (-4°F – 158°F )
Storage Temperature	-20°C – 80°C (-4°F – 176°F )
High Temperature Cut-Off	Approx. 80 °C (176 °F )
Certifications	Front (with Main unit & EB-1) : FCC, IC, CE, UKCA, RCM, Telec, WEEE, RoHS Rear, Rear Truck & Interior IR: KC, FCC, IC, CE, UKCA, RCM, WEEE, RoHS
111 Software i	BlackVue Application • Android 8.0 or higher, iOS 13.0 or higher BlackVue Viewer *Windows 7 or higher, Mac Sierra OS X (10.12) or higher BlackVue Web Viewer * Chrome 71 or higher, Safari 13.0 or higher
Other Features	Adaptive Format Free File Management System

## Documents / Resources

	<p><b><a href="#">BLACKVUE DR770X Box Series 3-Channel Stealthy Hidden Dash Cam</a></b> [pdf] User Guide YCK-DR770XBOX, YCKDR770XBOX, dr770xbox, DR770X Box Series 3-Channel Stealthy Hidden Dash Cam, Box Series 3-Channel Stealthy Hidden Dash Cam, 3-Channel Stealthy Hidden Dash Cam, Stealthy Hidden Dash Cam, Dash Cam</p>
---	--

## References

-  [4K Cloud Dash Cams for Cars and Trucks - BlackVue Dash Cameras](#)

-  [BlackVue Cloud — Add-on service for cloud-compatible BlackVue dashcams](#)
-  [BlackVue App, Viewer and Cloud Manuals – Online manuals for BlackVue App, Viewer and Cloud services](#)

[Manuals+](#).