



# BLACKVUE CM100GLTE-M External 4G LTE Module User Guide

[Home](#) » [BLACKVUE](#) » BLACKVUE CM100GLTE-M External 4G LTE Module User Guide 

## Contents

- [1 BLACKVUE CM100GLTE-M External 4G LTE Module](#)
- [2 In the box](#)
- [3 At a glance](#)
- [4 Install and power up](#)
- [5 Product specifications](#)
- [6 Product Warranty](#)
- [7 Documents / Resources](#)
  - [7.1 References](#)
- [8 Related Posts](#)



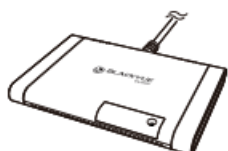
**BLACKVUE CM100GLTE-M External 4G LTE Module**



For manuals, customer support and FAQs go to [www.blackvue.com](http://www.blackvue.com)

## In the box

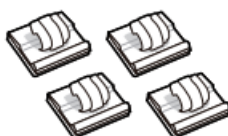
Check the box for each of the following items before installing the BlackVue device.



Connectivity module



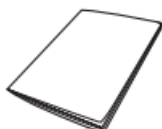
SIM eject tool



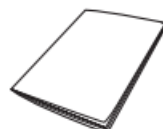
Cable Clips (4ea)



Double-side tape



User guide



SIM activation guide



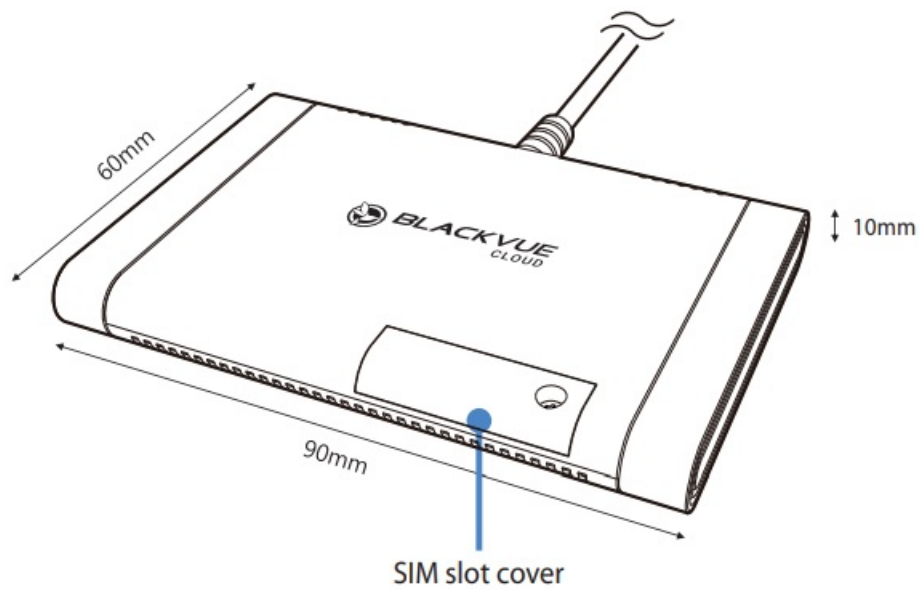
Screw Driver

## Need help?

Download the manual (including FAQs) and the latest firmware from [www.blackvue.com](http://www.blackvue.com) Or contact a Customer Support expert at [cs@pittasoft.com](mailto:cs@pittasoft.com)

## At a glance

The following diagram explains details of the external connectivity module.



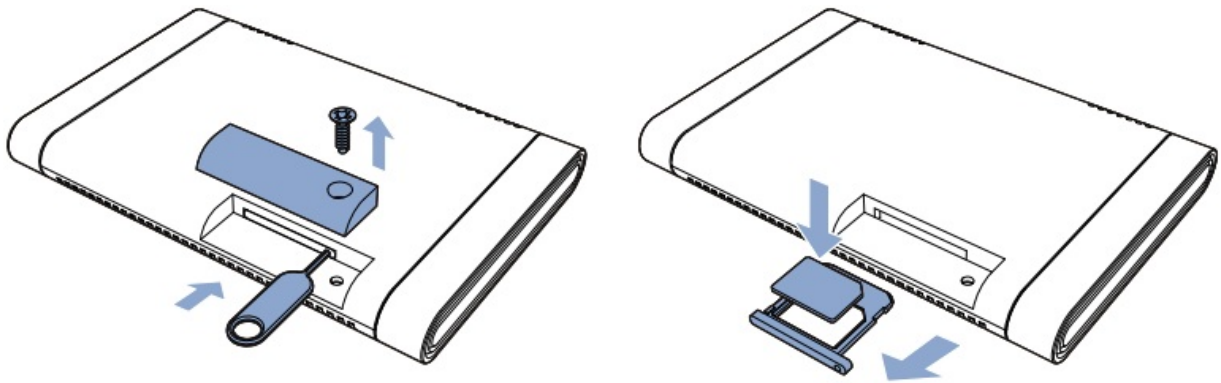
## Install and power up

Install the connectivity module at top corner of the windshield. Remove any foreign matter and clean and dry the windshield before installation.

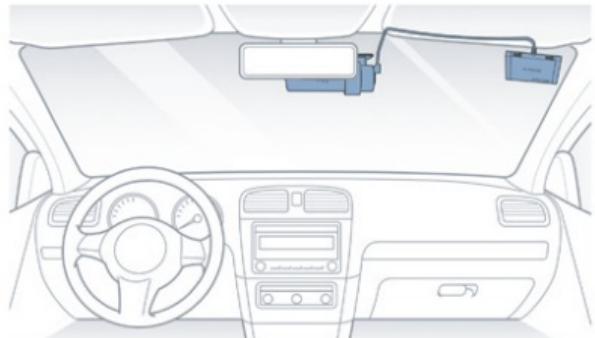
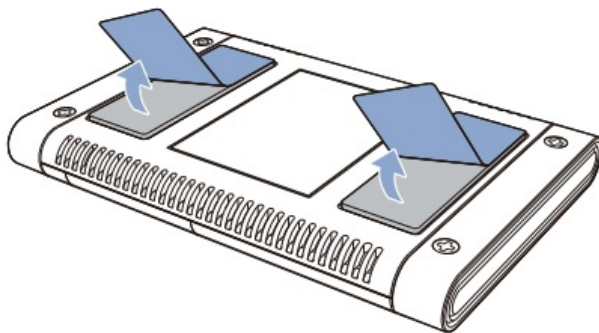


**Warning:** Do not install the product in a location where it can obstruct the driver's field of vision.

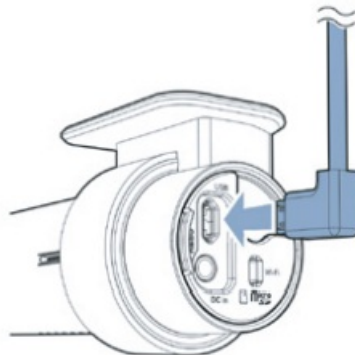
- Turn off the engine.
- Unscrew the bolt that locks the SIM slot cover on connectivity module. Remove the cover, and unmount the SIM slot using the SIM eject tool. Insert the SIM card into the slot.



- Peel off the protective film from the double-sided tape and attach the connectivity module to the top corner of the windshield.



- Connect the front camera (USB port) and the connectivity module cable (USB).



- Use the pry tool to lift the edges of the windshield trim/molding and tuck in the connectivity module cable.
- Turn on the engine. The BlackVue dashcam and connectivity module will power up.
- **Note**
  - For full details on installing the dashcam on your vehicle, refer to the “Quick Start Guide” that is included in the BlackVue dashcam package.
  - SIM card must be activated to use LTE service. For details, refer to the SIM Activation Guide.

## Product specifications

**CM100GLTE**

<b>Model Name</b>	CM100GLTE
<b>Color/Size/Weight</b>	Black / Length 90 mm x Width 60 mm x Height 10 mm / 110g
<b>LTE Module</b>	Quectel EC25
<b>LTE Supported Band</b>	EC25-A : B2/B4/B12 EC25-J : B1/B3/B8/B18/B19/B26 EC25-E : B1/B3/B5/B7/B8/B20
<b>LTE Features</b>	Support up to Non-CA CAT. 4 FDD Support 1.4/3/5/10/15/20MHz RF Bandwidth LTE-FDD : Max 150Mbps(DL) / Max 50Mbps(UL)
<b>LTE Transmit Power</b>	Class 3 : 23dBm +/-2dBm @ LTE-FDD Bands
<b>USIM Interface</b>	Support USIM Nano Card / 3.0V
<b>GNSS Feature</b>	Gen8C Lite of Qualcomm Protocol : NMEA 0183 Mode : GPS L1, Glonass G1, Galileo E1, Bei-dou B1
<b>Connector Type</b>	Micro USB Type-B Connector with Harness Cable
<b>USB Interface</b>	Compliant with USB 2.0 specification(Slave Only), Reach up to 480Mbps for data transfer rate
<b>LTE Antenna Type</b>	Fixed / Intenna (Main, Diversity)
<b>GNSS Antenna Type</b>	Ceramic Patch Antenna
<b>Power Supply</b>	USB Harness Cable : 3.0m Typical Supply Voltage : 5.0V / 1A Supply Input Voltage : 3.3V ~ 5.5V / Max. Current : 2A

<b>Power Consumption</b>	Idle Mode : 30mA / Traffic Mode : 620mA @ Max. Power (23dBm)
<b>Temperature Range</b>	Operation Temperature Range : -35°C ~ +75°C Storage Temperature Range : -40°C ~ +85°C
<b>Certifications</b>	CE, UKCA, FCC, ISCED, RCM, TELEC, KC, WEEE, RoHS

## Product Warranty

The term of this product warranty is 1 year from the purchase date. (Accessories such as an External Battery/ microSD Card: 6 Months)

We, PittaSoft Co., Ltd., provide the product warranty according to the Consumer Dispute Settlement Regulations (drawn up by the Fair Trade Commission). PittaSoft or designated partners will provide the warranty service upon request.

Circumstances			Warranty	
			Within the Term	Outside of the Term
For performance/functional problems under normal use conditions	For serious repair required within 10 days of purchase		Exchange/ Refund	N/A
	For serious repair required within 1 month of purchase		Exchange	
	For serious repair required within 1 month of exchange		Exchange/ Refund	
	When not exchangeable		Refund	
	Repair  (If Available)	For Defect	Free Repair	Paid Repair/ Paid Product Exchange
		Repeated problem with the same defect (up to 3 times)		
		Repeated trouble with different parts (up to 5 times)		
	Repair  (If Unavailable)	For the loss of a product while being serviced/repared	Exchange/ Refund	Refund after depreciation plus an additional 10 % (Maximum: purchase price)
		When repair is unavailable due to lack of spare parts within the component holding period		
		When repair is unavailable even when spare parts are available		Exchange/ Refund after depreciation
1) Malfunction due to customer fault			Paid Repair	Paid Repair
– Malfunction & damage caused by user negligence (fall, shock, damage, unreasonable operation, etc.) or careless use				
– Malfunction & damage after being serviced/repared by an unauthorized third party, and not through Pittasoft’s Authorized Service Center.				
– Malfunction & damage due to the use of unauthorized components, consumables, or separately sold parts				
2) Other Cases				
– Malfunction due to natural disasters (fire, flood, earthquake, etc.)				
– Expired life span of a consumable part				
– Malfunction due to external reasons				



FCC ID: YCK-CM100GLTE / Contains FCC ID: XMR201605EC25A / Contains IC ID: 10224A-201611EC25A

#### Declaration of Conformity

Pittasoft declares that this device complies with the essential requirements and relevant provisions of Directive


2014/53/EU

Go to [www.blackvue.com/doc](http://www.blackvue.com/doc) to view the Declaration of Conformity.

- Product: External Connectivity Module
- Model Name: CM100GLTE
- Manufacturer: Pittasoft Co., Ltd.
- Address: 4F ABN Tower, 331, Pangyo-ro, Bundang-gu, Seongnam-si, Gyeonggi-do, Republic of Korea, 13488
- Customer Support : [cs@pittasoft.com](mailto:cs@pittasoft.com)
- Product Warranty: One-Year Limited Warranty
- [facebook.com/BlackVueOfficial](https://facebook.com/BlackVueOfficial)
- [instagram.com/blackvueofficial](https://instagram.com/blackvueofficial)
- [www.blackvue.com](http://www.blackvue.com)
- Made in Korea

COPYRIGHT©2022 Pittasoft Co., Ltd. ALL rights reserved.

## Documents / Resources

	<p><a href="#">BLACKVUE CM100GLTE-M External 4G LTE Module</a> [pdf] User Guide CM100GLTE-M, External 4G LTE Module, CM100GLTE-M External 4G LTE Module, 4G LTE Module, LTE Module, Module</p>
---	--

## References

- [4K Cloud Dash Cams for Cars and Trucks - BlackVue - BlackVue Dash Cameras](#)
- [Declaration Of Conformity - BlackVue Dash Cameras](#)

[Manuals+](#)