

**BLACK+DECKER.
CO100B
Spacemaker
Multi-Purpose
Can Opener**



BLACK+DECKER CO100B Spacemaker Multi-Purpose Can Opener User Manual

[Home](#) » [Support](#) » BLACK+DECKER CO100B Spacemaker Multi-Purpose Can Opener User Manual 

Contents

- [1 BLACK+DECKER CO100B Spacemaker Multi-Purpose Can Opener](#)
- [2 IMPORTANT SAFEGUARDS](#)
- [3 GETTING TO KNOW YOUR SPACEMAKER™ CAN OPENER](#)
- [4 INSTALLING YOUR SPACEMAKER™](#)
- [5 HOW TO USE](#)
- [6 CARE AND CLEANING](#)
- [7 WARRANTY AND CUSTOMER SERVICE INFORMATION](#)
- [8 FAQs](#)
- [9 Video-BLACK+DECKER CO100B Spacemaker Multi-Purpose Can Opener](#)
- [10 References](#)
- [11 Related Posts](#)



BLACK+DECKER CO100B Spacemaker Multi-Purpose Can Opener



Please Read and Save this Use and Care Book.

IMPORTANT SAFEGUARDS

When using electrical appliances, basic safety precautions should always be followed to reduce the risk of fire, electric shock, and/or injury, including the following:

- Read all instructions.
- To protect against the risk of electrical shock do not immerse the cord, plugs or appliance in water or other liquid.
- Close supervision is necessary when any appliance is used by or near children.
- Unplug from the outlet when not in use, before disassembly, and before cleaning.
- Avoid contacting moving parts.
- Do not operate any appliance with a damaged cord or plug or after the appliance malfunctions, or has been damaged in any manner. Contact the consumer service number listed in this manual.
- The use of attachments not recommended or sold by the manufacturer may cause fire, electric shock or injury.
- Do not use outdoors.
- Do not attempt to open pressurized (aerosol-type) cans.
- Do not open cans of flammable liquids such as lighter fluids.
- To reduce the risk of fire or electric shock, do not operate any heating appliance beneath the mounted unit.
- Do not mount the storage bracket/unit over or near any portion of a heating or cooking appliance, or a sink or basin.
- Handle can opener carefully; cutting blades are sharp.
- This appliance is not intended for use by persons (including children) with reduced physical, sensory or mental capabilities, or lack of experience and knowledge unless they have been given supervision or instruction concerning use of the appliance by a person responsible for their safety.
- Children should be supervised to ensure that they do not play with the appliance.

SAVE THESE INSTRUCTIONS.

This product is for household use only. **POLARIZED PLUG** (120V models only) This appliance has a polarized plug (one blade is wider than the other). To reduce the risk of electric shock, this plug is intended to fit into a polarized outlet only one way. If the plug does not fit fully into the outlet, reverse the plug. If it still does not fit, contact a qualified electrician. Do not attempt to modify the plug in any way.

TAMPER-RESISTANT SCREW

Warning: This appliance is equipped with a tamper-resistant screw to prevent removal of the outer cover. To reduce the risk of fire or electric shock, do not attempt to remove the outer cover. There are no user-serviceable parts inside. Repair should be done only by authorized service personnel.

ELECTRICAL CORD

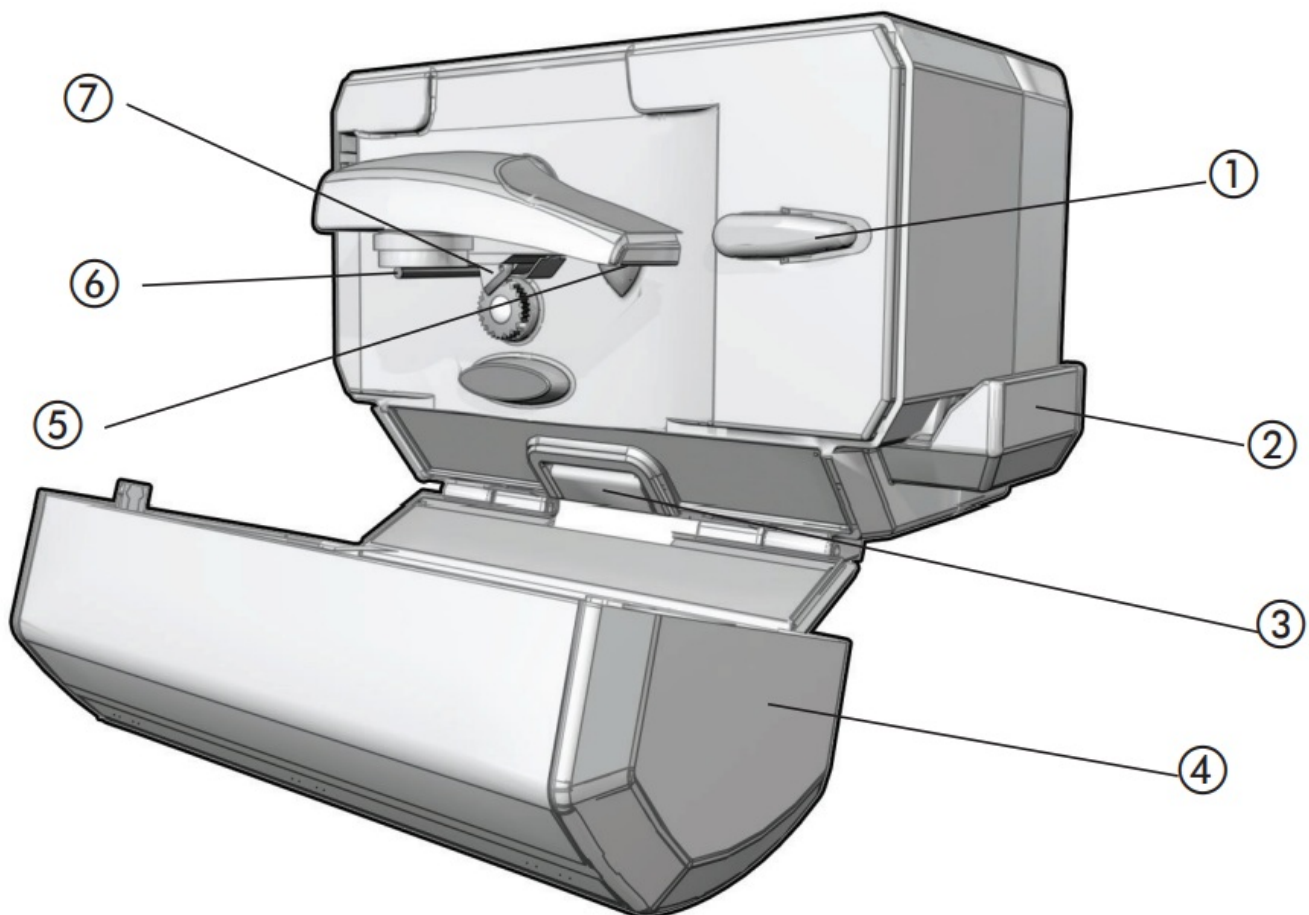
1. A short power-supply cord is provided to reduce the risk resulting from becoming entangled in or tripping over a longer cord.
2. Extension cords may be used if care is exercised in their use.
3. If a long detachable extension cord is used:
 - The marked electrical rating of the power cord or extension cord should be at least as great as the electrical rating of the appliance.
 - If the appliance is of the grounded type, the extension cord should be a grounding-type 3-wire cord.
 - The cord should be arranged so that it will not drape over the countertop or tabletop where it can be pulled on by children or tripped over.

Note: If the power cord is damaged, please contact the warranty department listed in these instructions.

WELCOME!

Congratulations on your purchase of the Spacemaker™ Can Opener. We have developed this guide to ensure optimal product performance and your complete satisfaction. Save this use and care manual and be sure to register your appliance online at www.prodprotect.com/applica.

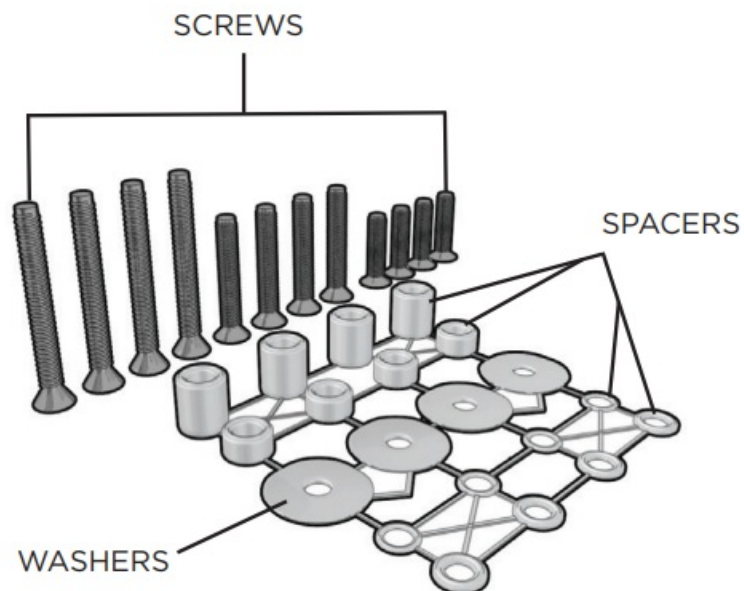
GETTING TO KNOW YOUR SPACEMAKER™ CAN OPENER



1. Bag cutter
2. Knife sharpener
3. Bottle Opener
4. Cover
5. † Blade assembly with magnet (Part # CO100-01) ±
6. Key post
7. Piercing lever
8. Cord storage (not included in all models/not shown)
9. Cord management hook (not shown)

Note: † indicates consumer replaceable/removable parts

MOUNTING



- Mounting Parts (Part # SDC-MOUNTING KIT)
 - 16 Spacers
 - 4: 1/2"
 - 4: 1/4"
 - 4: 3/16"
 - 4: 1/16"
 - 12 Screws
 - 4: 1"
 - 4: 1 1/2"
 - 4: 2 1/4"
 - 4 Washers
- Mounting Template (in box)

You will also need:

- Tape

- Ruler
- Electric drill with a 1/4" drill bit and a 1/32" drill bit
- Screwdriver
- Protective glasses
- A second person

Note: The use of all provided mounting hardware may not be necessary for the installation of all Spacemaker™ products.

INSTALLING YOUR SPACEMAKER™

This unit is for household use only. Only recommended for installation on flat bottom cabinets.

GETTING STARTED

- Remove all packing material, stickers, and plastic band around the power plug.
- Register your product at www.prodprotect.com/applica
- Remove and save literature.
- Remove mounting hardware and template. Set them safely aside.
- For warranty verification, do not remove the cord tag.

Do not attempt to operate the appliance until properly installed.

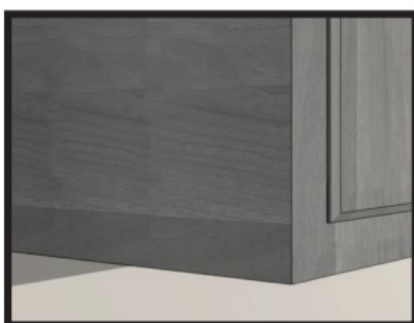
CHOOSE A LOCATION

When choosing your location, consider the following:

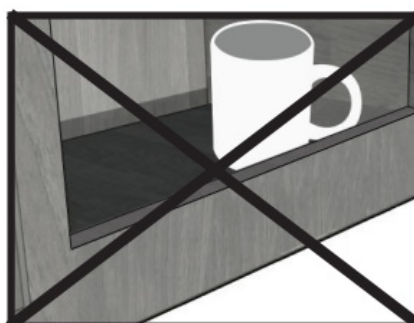
- DO make sure to mount within reach of an electrical outlet.
- DO consider your normal work patterns in the kitchen when choosing a location.
- DO NOT mount over any heating or cooking appliance such as your range or oven.
- DO NOT mount over or near a sink.
- DO NOT mount under, in front of, or behind any under-cabinet light fixtures.

DETERMINE CABINET TYPE

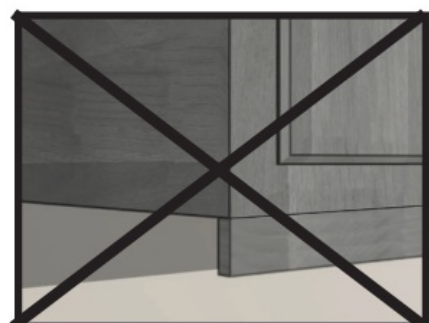
Important: Spacemaker™ appliances are only recommended to be installed on cabinets without a top lip and with a flat bottom. It is not recommended to install Spacemaker appliances on cabinets with an overhang. See the image below for recommended cabinet types.



FLAT BOTTOM



TOP LIP



OVERHANG

STANDARD INSTALLATION (FLAT CABINET)

Important: Always wear protective glasses or goggles to prevent injury when drilling.

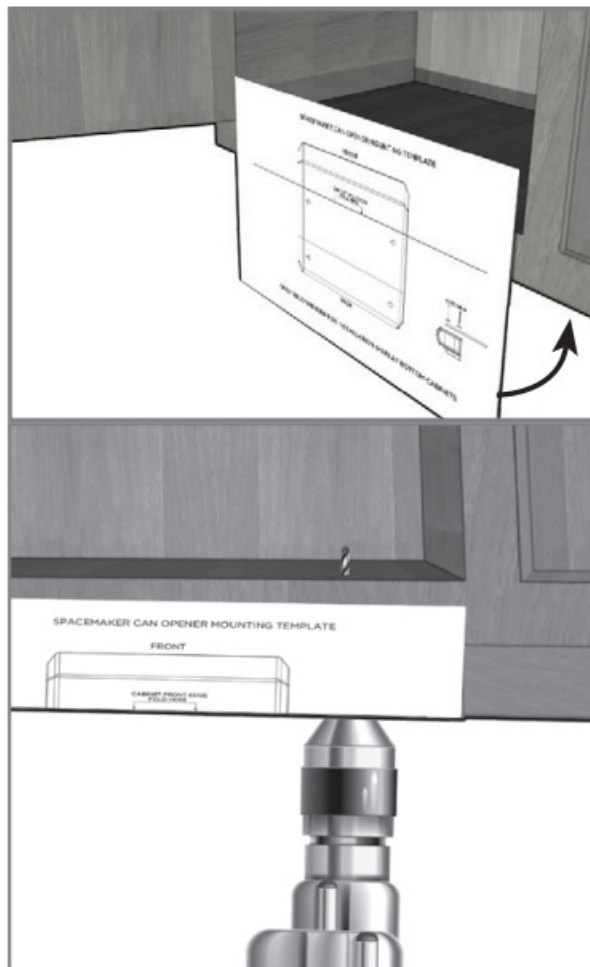
Important: Do not align screw holes on the template directly under the partition between cabinets, as this will prevent you from installing the appliance properly. Pay close attention to where drill holes will be set so as not to damage your cabinets during mounting. Drilling through your cabinet's partition may cause damage to cabinets and prevent proper installation.

1. Clear the countertop under the installation area to avoid getting dust or debris on other appliances or items.
Open cabinets and remove contents to make mounting easier.
2. Clean both the underside and topside of the bottom panel of the cabinet.
3. Decide whether you will be drilling from the top down or from the bottom up.

IF DRILLING FROM THE BOTTOM UP:

- With cabinet doors open, place the mounting template against the surface of the front edge of your cabinet. Align the thick line on the template (labeled “cabinet front edge”) with the lower front edge of your cabinet (D).

D



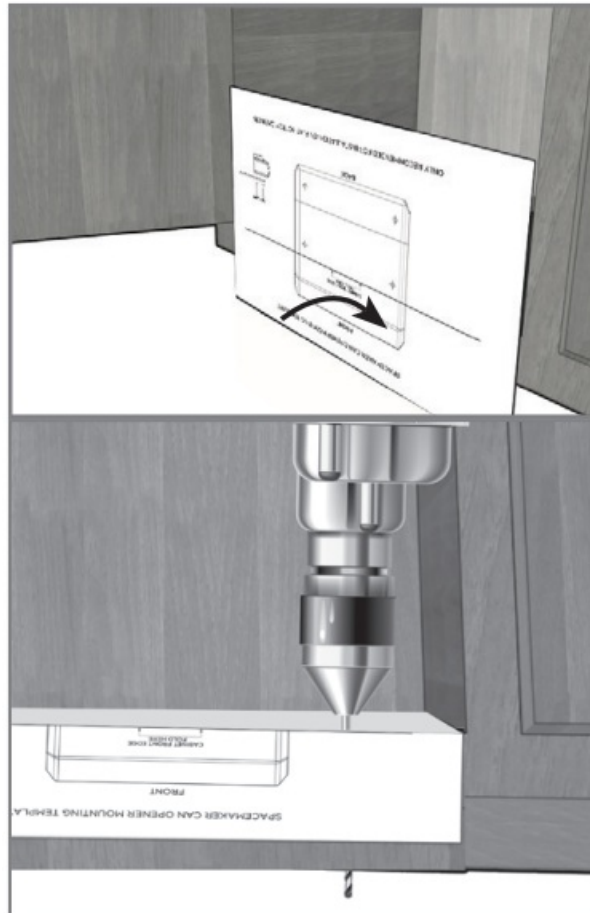
- Fold the balance of the template up along the underside of your cabinet, ensuring the “cabinet front edge” line remains aligned with the bottom front cabinet edge.
- Make sure the template is smooth and flush against the cabinet's underside. Pull the template tight and tape it down to hold in place.

IF DRILLING FROM THE TOP DOWN:

- With cabinet doors open, place the mounting template against the surface of the front edge of your cabinet. Align the thick line on the template (labeled “cabinet front edge”) with the upper front edge of your

cabinet (E).

E

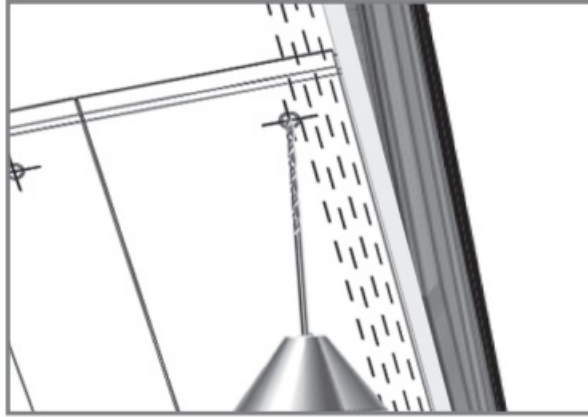


- Fold the balance of the template over into the inside of your cabinet, ensuring the “cabinet front edge” line remains aligned with the upper front cabinet edge.
- Make sure the template is smooth and flush against the cabinet’s inside. Pull the template tight and tape it down to hold it in place.

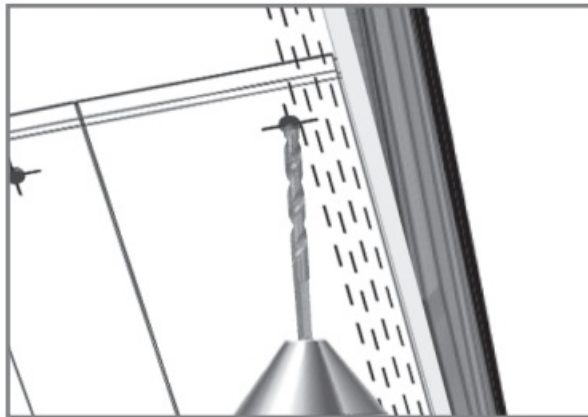
Important: Always ensure you are drilling straight up or straight down through the marked mounting holes on the template. Drilling at an angle may prevent proper installation and may damage cabinets if the drill bit pierces the partition.

4. Using a 1/32” drill bit, drill from the underside of the cabinet up or the top down, creating pilot holes through the 4 holes marked on the template. This will help guide the 1/4” drill bit in the next step. (F)

F



G

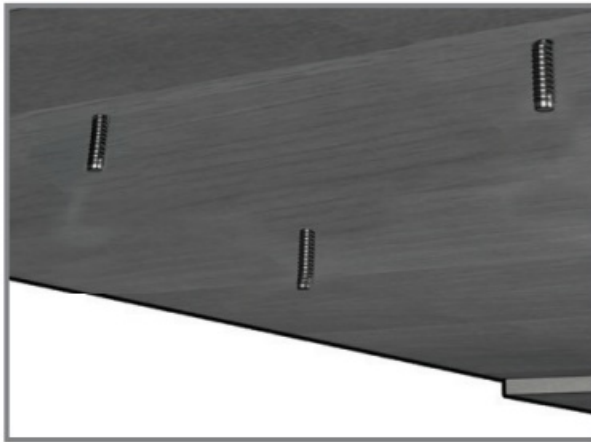


5. Switch to a 1/4" drill bit and drill straight up or straight down through the holes that have just been created. (G)
6. Once holes are drilled, remove the tape and mounting template.
7. Wipe dust and debris off the top side and the underside of the cabinet surface.
8. Place a washer inside the cabinet over each of the 4 holes you drilled. (H)

H



I

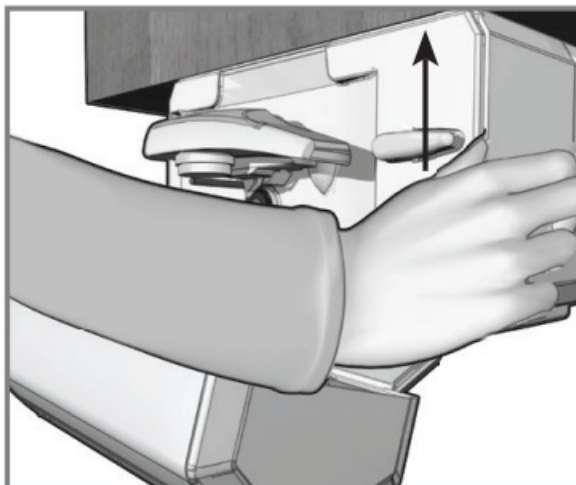


9. Determine what size screws to use by placing a screw through the hole in the cabinet without the appliance in place. The screw should be $\frac{1}{2}$ " exposed underneath the cabinet to ensure the appliance is properly attached to the cabinet. (I)

Note: Several standard screw lengths are provided but may not fit all cabinet sizes.

10. Place one of the screws through each of the washers covering the holes in the cabinet, from the inside of the cabinet down.
11. Hold the appliance up to the screws, aligning the front of the appliance with the front edge of the cabinet base. The front of the can opener DOES NOT include the cover, as indicated on the mounting template. Make sure there will be enough room to lift the can opener lever when the cover is open. The screws in the cabinet should align with the mounting holes in the appliance. (J)

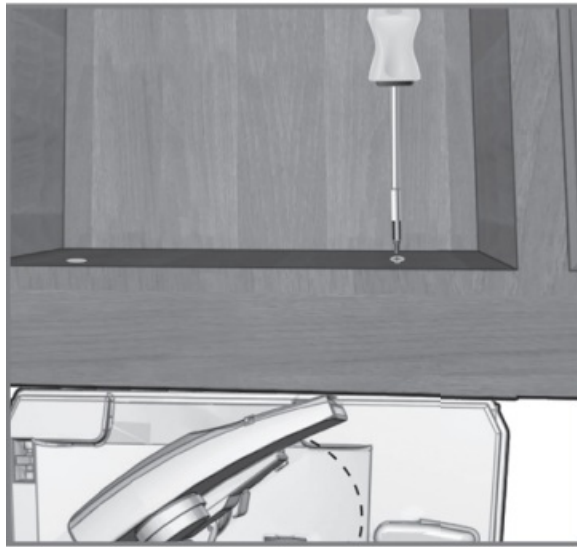
J



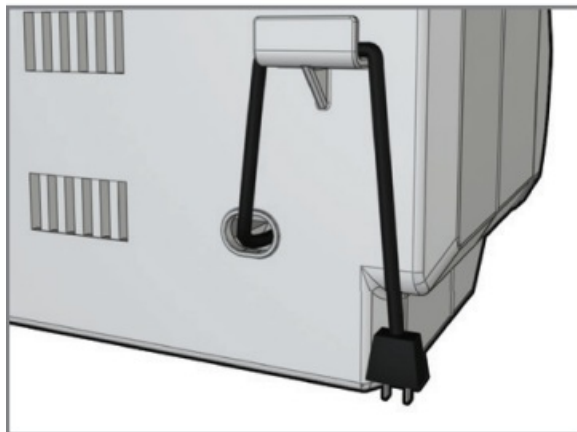
Note: It may require two people to ensure the appliance is held in place while drilling.

12. Screwing from inside the cabinet down into the appliance holes, use your drill or screwdriver to tighten the four screws in place. (K)

K



L



Note: Always tighten screws to properly secure the appliance to the cabinet and to ensure the appliance does not move or shake during operation.

13. Pull out cord from cord storage behind the appliance and plug into a standard electrical outlet. Extra cord can be fed back into storage or hung over cord management hook behind the appliance. (L)

Note: If you are connecting this appliance to the receptacle of another Spacemaker™ appliance such as the toaster oven or coffeemaker, make sure you can easily unplug the appliance following use.

14. Your Spacemaker™ appliance is now ready for use!

HOW TO USE

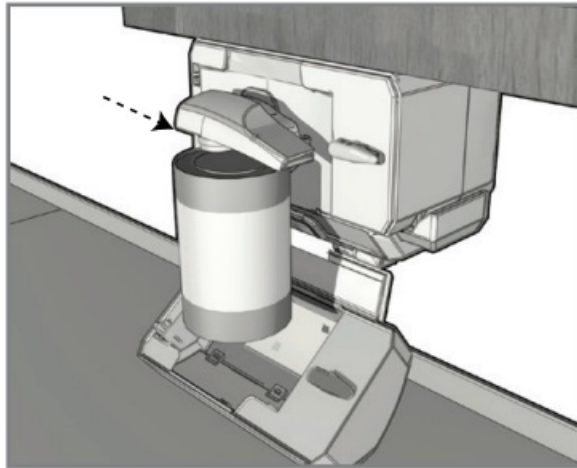
This product is for household use only.

OPENING A CAN

1. Lift piercing lever.

2. Tip the can so that the rim is under the locating post, then push down on the piercing lever, making sure the cutter blade is inside the rim of the can (M)

M



Note: Because of the hands-free feature, it is not necessary to hold the lever down or hold the can during cutting. However, you may have to support very tall or heavy cans.

Tip: When the can is opened, the can opener will stop automatically.

3. To remove the can, hold it with one hand and raise the lever with the other.

Caution: Avoid contact with the cut edges of the can or lid; they are sharp. During the opening process, the design of your can opener will roll the rim of the can to prevent sharp edges; however, handle open can and cut lid with caution.

4. Carefully discard the lid from the magnet.

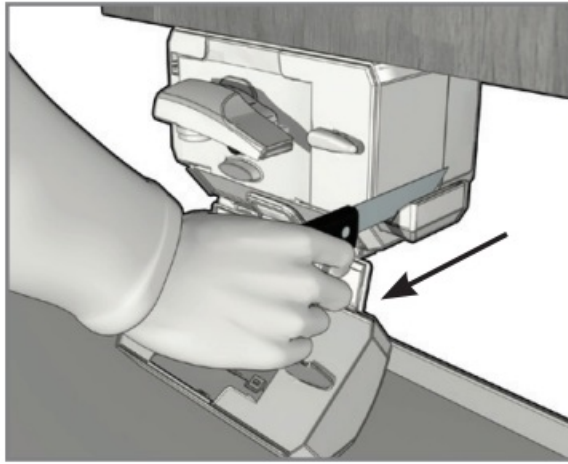
HELPFUL TIPS AND TRICKS:

- Do not use this can opener to open cans with a pull tab, peel-off foil seal, rolling key or rimless cans.
- Open frozen juices or foods in cardboard cans right from the freezer, while they are frozen.
- Aluminum lids will not stick to the magnet.

USING THE KNIFE SHARPENER

1. Insert the blade to be sharpened with the end of the blade closest to the knife handle into the sharpening slot.
2. Carefully press down on the blade and pull it toward you through the slot in one continuous stroke. (N)

N



Important: Do not saw knife back and forth to sharpen. Pull through the sharpener in one direction with a continuous, slow and even motion. Failure to do so may dull or damage your blade.

3. Repeat until desired sharpness is achieved.
4. Wash and dry knife before using again.

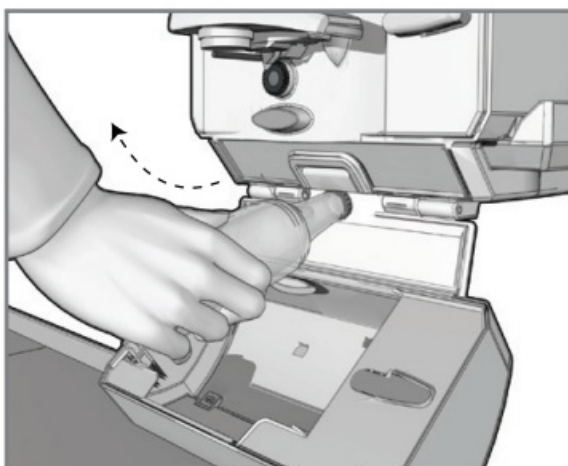
HELPFUL TIPS AND TRICKS:

1. Use caution when washing and drying knives after sharpening.
2. Do not sharpen serrated blades, as this will smooth their edges.
3. Do not sharpen scissors.

USING THE BOTTLE OPENER

1. Grab the bottle to be opened and position the cap above the lip on the back side of the bottle opener.
2. Tilt bottom of the bottle away from you to catch the cap on the lip and open the bottle. (O)

O



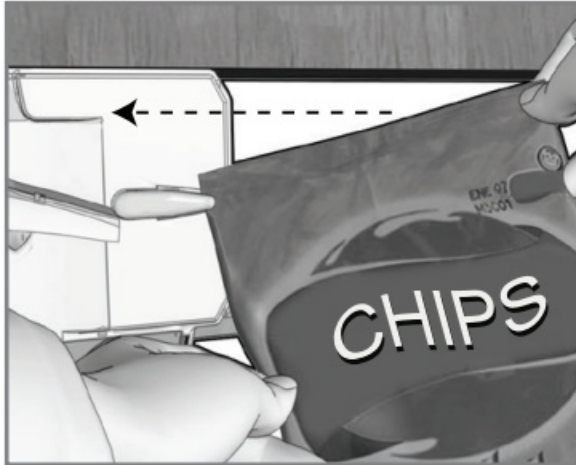
USING THE BAG CUTTER

1. Grasp the plastic or metal foil bag to be opened by one corner, with one hand holding the top edge and the other hand holding the side or bottom, depending on the size of the bag.
2. Position tightly pulled corner of bag against the cutter and pull firmly to the left to open the bag.

Note: Pulling a bag straight against the cutter will cut a line along the top of the bag; pulling at an angle will

simply remove the corner. (P)

P



CARE AND CLEANING

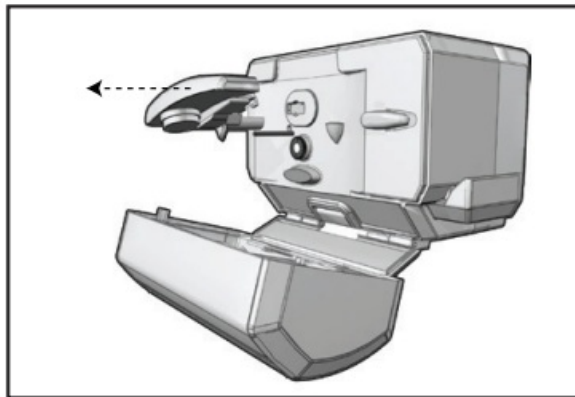
This product contains no user-serviceable parts. Refer service to qualified service personnel.

Important: Unplug the cord before cleaning the unit.

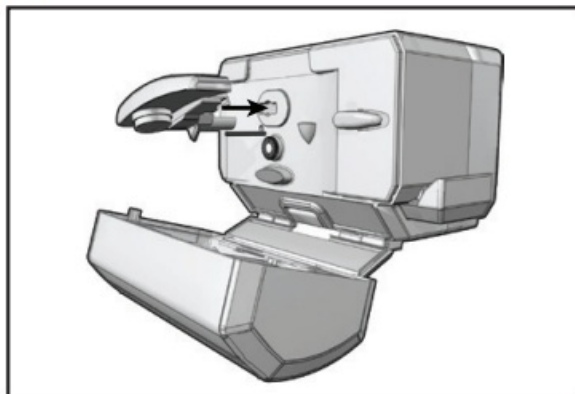
REMOVING BLADE ASSEMBLY

1. Lift the piercing lever up as far as it will go (roughly 90 degrees)
2. Carefully grip the blade assembly and pull it away from the can opener. (Q)
- 3.

Q



R



Wash with water and dish soap and dry thoroughly. Do not put the blade assembly in the dishwasher.

4. Before replacing the blade assembly, wipe the can opener body, knife sharpener, and area around the geared wheel with a slightly damp cloth or sponge.

REPLACING BLADE ASSEMBLY

1. Align the key post on the blade assembly with a key slot on the unit. (R)
2. Push in the blade assembly and turn clockwise until it locks into position. (S)

S



WARRANTY AND CUSTOMER SERVICE INFORMATION

For service, repair, or any questions regarding your appliance, call the appropriate 800 number listed within this section. Please DO NOT return the product to the place of purchase. Also, please DO NOT mail the product back to the manufacturer, nor bring it to a service center. You may also want to consult the website listed on the inside cover of this manual.

Two-Year Limited Warranty (Applies only in the United States and Canada)

What does it cover?

Any defect in material or workmanship provided; however, Spectrum Brands, Inc.'s liability will not exceed the purchase price of the product.

For how long?

- Two years from the date of original purchase with proof of purchase.

What will we do to help you?

- Provide you with a reasonably similar replacement product that is either new or factory refurbished.

How do you get service?

- Save your receipt as proof of date of sale.
- Visit the online service website at www.prodprotect.com/applica, or call toll-free 1-[800-231-9786](tel:800-231-9786), for general warranty service.
- If you need parts or accessories, please call 1-[800-738-0245](tel:800-738-0245).

What does your warranty not cover?

- Damage from commercial use
- damage from misuse, abuse, or neglect
- Products that have been modified in any way
- Products used or serviced outside the country of purchase
- Glass parts and other accessory items that are packed with the unit
- Shipping and handling costs associated with the replacement of the unit
- Consequential or incidental damages (Please note, however, that some states do not allow the exclusion or limitation of consequential or incidental damages, so this limitation may not apply to you.)

How does state law relate to this warranty?

This warranty gives you specific legal rights. You may also have other rights that vary from state to state or province to province.

www.BlackAndDeckerAppliances.com

Register online at: www.prodprotect.com/applica

Rate and review your products at: www.BlackAndDeckerAppliances.com

Share your pictures & stories with us online

Should you have any questions or concerns with your new product, please call our Customer Service Line at 1-[800-231-9786](tel:800-231-9786) (US and Canada). Please do not return to the store.

FAQs

What are the main features of the BLACK+DECKER CO100B Spacemaker Multi-Purpose Can Opener?

The BLACK+DECKER CO100B Spacemaker Multi-Purpose Can Opener includes a can opener, a knife sharpener, a bottle opener, a bag cutter, and cord storage, making it a versatile kitchen tool.

How do you install the BLACK+DECKER CO100B Spacemaker Can Opener?

To install the BLACK+DECKER CO100B Spacemaker Can Opener, follow the mounting instructions provided in the manual, using the provided mounting template to align the screw holes properly.

What safety features are included in the BLACK+DECKER CO100B Spacemaker Can Opener?

The BLACK+DECKER CO100B Spacemaker Can Opener includes a tamper-resistant screw to prevent removal of the outer cover and safety instructions to avoid electrical shock or injury.

Does the BLACK+DECKER CO100B Spacemaker Can Opener work with all types of cans?

The BLACK+DECKER CO100B Spacemaker Can Opener is designed to open most standard cans but should not be used on pressurized, flammable, or rimless cans.

How does the knife sharpener on the BLACK+DECKER CO100B Spacemaker Can Opener work?

To use the knife sharpener on the BLACK+DECKER CO100B Spacemaker Can Opener, insert the knife blade into the sharpening slot and pull it toward you in a slow, continuous motion.

What should I do if the cord of my BLACK+DECKER CO100B Spacemaker Can Opener is damaged?

If the power cord of your BLACK+DECKER CO100B Spacemaker Can Opener is damaged, contact the warranty department listed in the manual. Do not attempt to repair it yourself.

How do I clean the BLACK+DECKER CO100B Spacemaker Can Opener?

To clean the BLACK+DECKER CO100B Spacemaker Can Opener, unplug it and wipe the body with a damp cloth. Remove the blade assembly for washing with soap and water, but do not put it in the dishwasher.

Can children use the BLACK+DECKER CO100B Spacemaker Can Opener?

The BLACK+DECKER CO100B Spacemaker Can Opener should not be used by children without close adult supervision due to sharp blades and electrical components.

What type of power plug does the BLACK+DECKER CO100B Spacemaker Can Opener have?

The BLACK+DECKER CO100B Spacemaker Can Opener comes with a polarized plug, which fits into a polarized outlet one way to reduce the risk of electric shock.

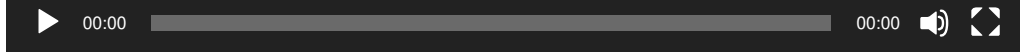
How do I replace the blade assembly on the BLACK+DECKER CO100B Spacemaker Can Opener?

To replace the blade assembly on the BLACK+DECKER CO100B Spacemaker Can Opener, lift the piercing lever, remove the old blade, and align the new blade assembly before locking it into place.

How do I use the bottle opener on the BLACK+DECKER CO100B Spacemaker Can Opener?

To use the bottle opener on the BLACK+DECKER CO100B Spacemaker Can Opener, position the bottle cap above the lip on the back of the opener and tilt the bottle to open it.

Video-BLACK+DECKER CO100B Spacemaker Multi-Purpose Can Opener



[Download this Manual: BLACK+DECKER CO100B Spacemaker Multi-Purpose Can Opener User Manual Spacemaker-Multi-Purpose-Can-Opener.mp4](#)

References

- [User Manual](#)

[Manuals+.](#) [Privacy Policy](#)

This website is an independent publication and is neither affiliated with nor endorsed by any of the trademark owners. The "Bluetooth®" word mark and logos are registered trademarks owned by Bluetooth SIG, Inc. The "Wi-Fi®" word mark and logos are registered trademarks owned by the Wi-Fi Alliance. Any use of these marks on this website does not imply any affiliation with or endorsement.