



## BLACK DIAMOND DEPLOY 325 Deploy Headlamp Instructions

[Home](#) » [BLACK-DIAMOND](#) » BLACK DIAMOND DEPLOY 325 Deploy Headlamp Instructions 


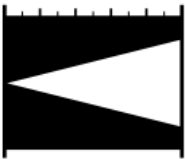


### BLACK DIAMOND DEPLOY 325 Deploy Headlamp




## Contents

- 1 ANSI FL-1 STANDARD / NORME
- 2 INSTRUCTIONS FOR USE
  - 2.1 BATTERY – RECHARGEABLE LITHIUM-ION
- 3 USE / MODES
- 4 STORAGE AND TRANSPORTATION
- 5 CARE AND MAINTENANCE
- 6 TROUBLESHOOTING
- 7 LIMITED WARRANTY
- 8 CUSTOMERS SUPPORT
- 9 Documents / Resources
  - 9.1 References
- 10 Related Posts

## ANSI FL-1 STANDARD / NORME

	ANSI FL-1 STANDARD / NORME			
	 LUMENS <i>PUISSANCE</i>	 DISTANCE <i>DISTANCE</i>	 BURNTIME* <i>TEMPS*</i>	 RESERVE** <i>RÉSERVE**</i>
<b>LOW</b> <i>Bas</i>	<b>6 lm</b>	<b>7 m</b>	<b>30 h</b>	<b>0 h</b>
<b>MED</b> <i>Moyen</i>	<b>180 lm</b>	<b>40 m</b>	<b>4.3 h</b>	<b>3 h</b>
<b>MAX</b> <i>Maxi</i>	<b>325 lm</b>	<b>52 m</b>	<b>2.5 h</b>	<b>4.5 h</b>

 **39 g**

This product is protected by one or more of the following patents. Other patents pending.  
Autres brevets en instance.  
US6249089B1, US6621225B2, US6650066B2, EP1120018B1, EP1206168B1

## INSTRUCTIONS FOR USE

### DEPLOY LED HEADLAMP

**IMPORTANT:** Follow all instructions carefully and keep for future reference.

## BATTERY – RECHARGEABLE LITHIUM-ION

### Charging:

- Charge the battery completely before initial use.
- Battery does not need to be fully discharged prior to being recharged.
- Battery will automatically stop charging when fully charged.

**Battery Life:** Your battery life will vary depending on:

- “Recovery time” or time when lamp has not been on.
- Temperature.
- Settings used.
- A full charge is needed to achieve maximum burn time!
- Dispose of the device/batteries in accordance with applicable local laws and regulations.

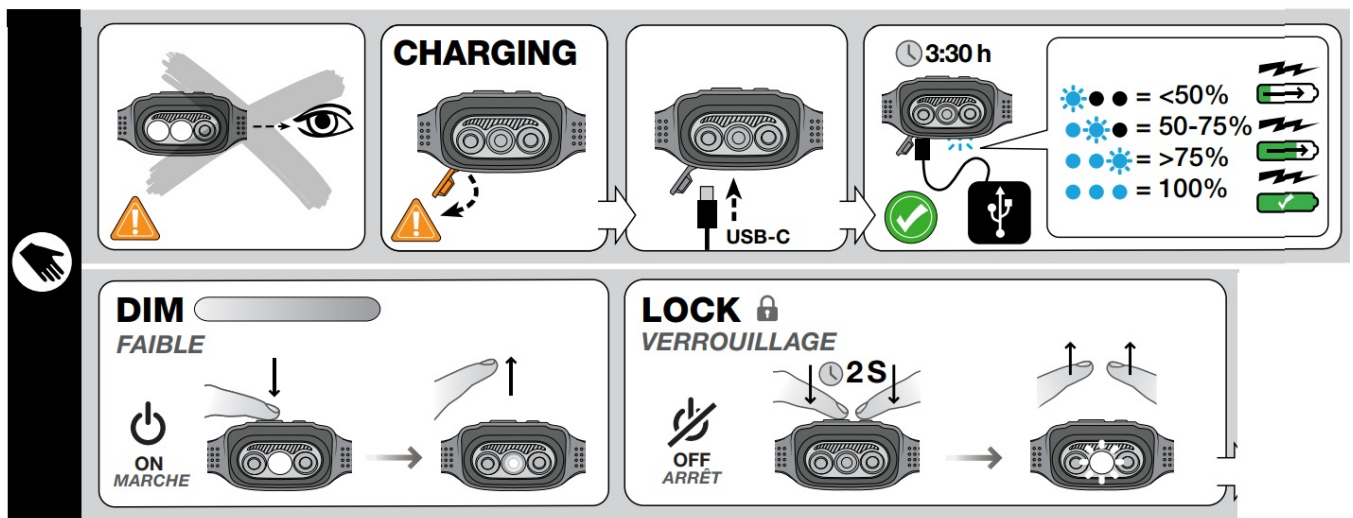
\*ANSI FL-1 Standard: Runtime to 10% of initial output.

\*\*Reserve: Additional time the lamp will produce usable light for low intensity activities (measured to .25 Lux @ 4 meters.)



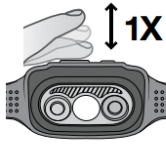
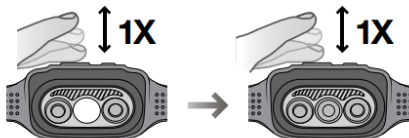
### USE / MODES

(see accompanying illustrations)



## ON/OFF

MARCHE/ARRÊT

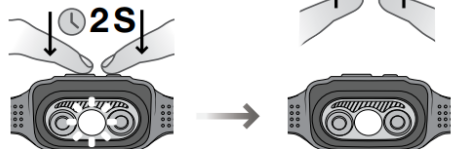


5s

- = 80-100%
- = 60-80%
- = 40-60%
- = 20-40%
- = 10-20%
- = 1-10%

## UNLOCK

OUVRIR

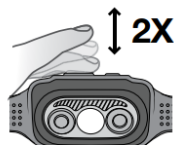


## STROBE

CLIGNOTANT



OFF  
ARRÊT



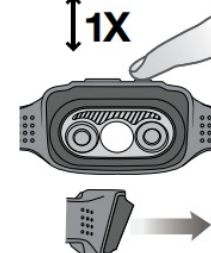
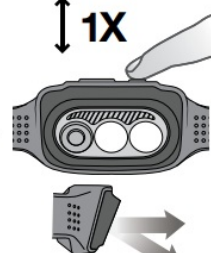
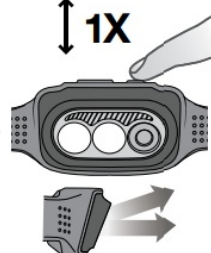
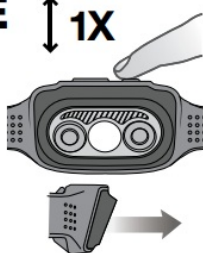
## MODE

1X

1X

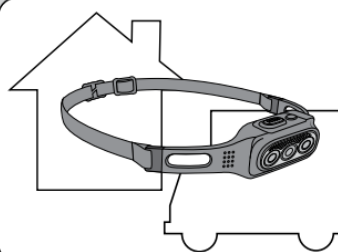
1X

1X



## STORAGE AND TRANSPORTATION

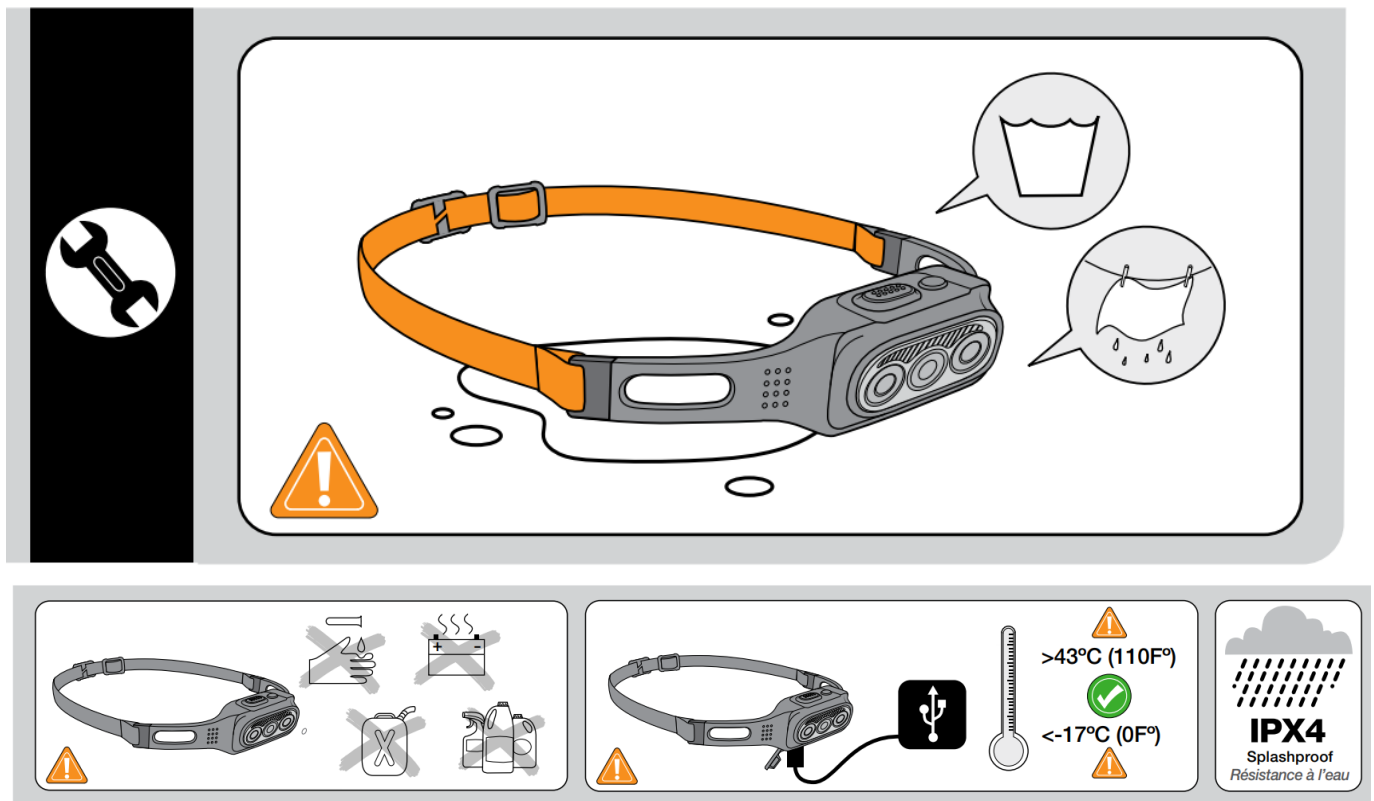
(see accompanying illustrations)





## CARE AND MAINTENANCE

(see accompanying illustrations)



## TROUBLESHOOTING

If the product does not work:

- Charge the batteries completely
- Check that the USB cord is properly inserted
- Work the switch several times

No luck? Contact your Black Diamond Dealer or [www.BlackDiamondEquipment.com](http://www.BlackDiamondEquipment.com).



## WARNINGS

- A responsible adult must supervise use by children under the age of 12
- Inspect your headlamp for proper operation prior to using and, for critical situations, carry a second light and sufficient spare batteries
- Do not stare directly into the beam or shine it directly into others' eyes. Intense light can damage your eyes or the eyes of those around you. Black Diamond Equipment is not responsible for the consequences, whether direct, indirect or accidental, or for any other type of damage arising or resulting from the use of its products.

## LIMITED WARRANTY

We warrant for three years from purchase date and only to the original retail buyer (Buyer) that our lighting products (Products) are free from defects in material and workmanship. We do not warrant Products against normal wear and tear, improper use, or improper maintenance. If Buyer discovers a covered defect, Buyer should return the Product to the place of purchase. In the event that this is not possible, return the Product to us at the address provided. The Product will be repaired or replaced at our discretion. That is the extent of our liability under this Warranty and, upon expiration of the applicable warranty period, all such liability shall terminate. We reserve the right to require proof of purchase for all warranty claims. This Warranty gives you specific rights, and you may also have other rights which vary from state to state. Except for expressly stated in this Warranty, we shall not be liable for direct, indirect, incidental, or other types of damages arising out of, or resulting from the use of Product. This Warranty is in lieu of all other warranties, express or implied, including, but not limited to, implied warranties of merchantability or fitness for a particular purpose (some states do not allow the exclusion or limitation of incidental or consequential damages or allow limitations on the duration of an implied warranty, so the above exclusions may not apply to you).

This Black Diamond product meets the requirements of the EMC (electromagnetic compatibility) Directive 2014/30/EU and the RoHS Directive 2011/65/EU. It also meets the requirements for Electromagnetic Compatibility Regulations 2016 and The Restriction of the Use of Certain Hazardous Substances in Electrical and Electronic Equipment Regulations 2012 as brought into UK law.

The Declarations of Conformity for this product may be viewed at [www.blackdiamondequipment.com/DOC](http://www.blackdiamondequipment.com/DOC)

**NOTE:** This product has been tested and found to comply with the limits for a Class B digital device, pursuant to Part 15 of the FCC Rules. These limits are designed to provide reasonable protection against harmful interference in a residential installation. This product generates, uses and can radiate radio frequency energy and, if not used in accordance with the instructions, may cause harmful interference to radio communications. However, there is no guarantee that interference will not occur in a particular installation. If the product does cause harmful interference to radio, television, cell phone or avalanche beacon reception, which can be determined by turning the equipment off and on, the user is encouraged to try to correct the interference by one or more of the following measures:

- Increase the separation between the product and receiver.
- Turn the product off or to a different setting. Industry Canada ICES-005 Compliance Label: CAN ICES-005 (B)/NMB-005(B)

## CUSTOMERS SUPPORT



North America: Black Diamond Equipment, Ltd.  
2084 East 3900 South  
Salt Lake City, UT 84124



Europe: Black Diamond Europe  
Hans-Maier-Straße 9  
6020, Innsbruck, Austria



[www.BlackDiamondEquipment.com](http://www.BlackDiamondEquipment.com)



© Black Diamond Equipment, Ltd. 2023 M14813\_A



## Documents / Resources



[BLACK DIAMOND DEPLOY 325 Deploy Headlamp](#) [pdf] Instructions  
DEPLOY 325 Deploy Headlamp, DEPLOY 325, Deploy Headlamp, Headlamp

## References

- [Black Diamond® Equipment | Climbing, Skiing & Trail Running Gear](#)
- [Declarations of Conformity](#)
- [The domain name pment.com is for sale | Dan.com](#)
- [Black Diamond® Equipment | Climbing, Skiing & Trail Running Gear](#)
- [Black Diamond® Equipment | Climbing, Skiing & Trail Running Gear](#)
- [Declarations of Conformity](#)