

BLACK DECKER BD50MWSA 4500 Sq. Ft. Dehumidifier for Large Spaces and Basements Owner's Manual

[Home](#) » [Black Decker](#) » BLACK DECKER BD50MWSA 4500 Sq. Ft. Dehumidifier for Large Spaces and Basements Owner's Manual 



OWNER'S MANUAL



Contents

- 1 BD50MWSA 4500 Sq. Ft. Dehumidifier for Large Spaces and Basements
- 2 !IMPORTANT LIMB INFORMATION!
- 3 IMPORTANT PRESS INFORMATION
- 4 !SAFETY FIRST!
- 5 CARE AND MAINTENANCE
- 6 BOW ADJUSTMENTS
- 7 SHORERUNNVER – CONSTANT DRAW MODULE
- 8 INITIAL BOW SETUP
- 9 INSTALL ALL ACCESSORIES
- 10 SHORE RUNNER PART LIST
- 11 SPIN DOCTOR REEL INSTALLATION
- 12 ARROW SLIDE
- 13 SHOOTING INSTRUCTIONS
- 14 CAJUN BOWFISHING BOW WARRANTY STATEMENT
- 15 Documents / Resources
 - 15.1 References

BD50MWSA 4500 Sq. Ft. Dehumidifier for Large Spaces and Basements

4600 SW 41st Boulevard ● Gainesville, FL 32608

p: 800.694.9494 ● f: 812.467.1245

cajunbowfishing.com

Record important bow information here and keep for future reference.

Model:_____

Weight Range:_____

Draw Length:_____

String Length:_____

Cable Length:_____

Purchased From:_____

Date Purchased:_____

serial Number:_____

Congratulations! We know how much you are going to enjoy your new bow. For this reason, we ask you read the Care and Maintenance section carefully to learn how easy it is to maintain the quality, performance, and level of satisfaction you expect from a Cajun Bowfishing product. ENJOY YOUR NEW BOW!

!IMPORTANT LIMB INFORMATION!

Your new Cajun Bowfishing bow uses the latest technology in limb design. This creates a limb capable of storing optimal amounts of energy unlike any other bow in the industry. For that reason, the use of limb mounted accessories such as vibration dampeners must be restricted. These particular accessories **MUST NOT BE** mounted more than 2 inches from the limb pockets. Mounting limb accessories more than 2 inches away from the pockets, particularly clamping type accessories, can potentially damage the limbs and void the warranty. see the diagram above.

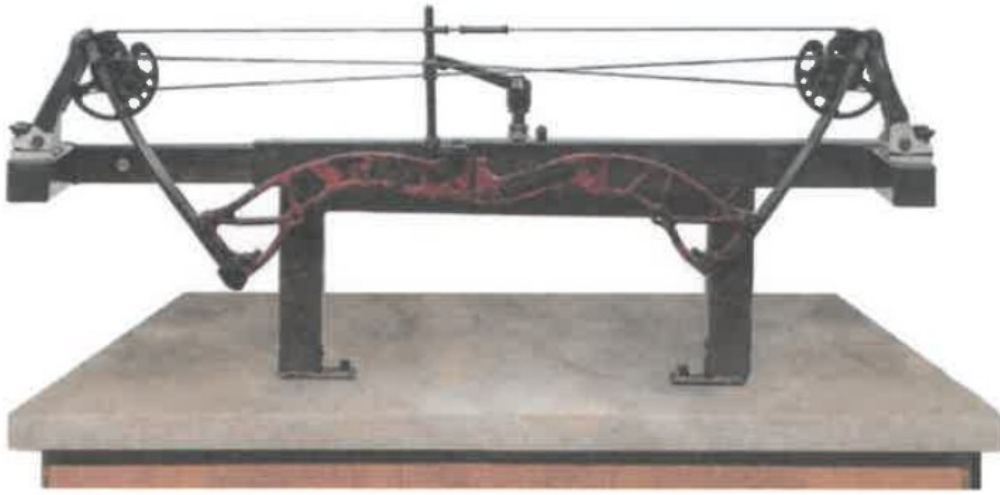


	Draw Weight (in pounds)			
	At 23"	At 25"	At 27"	At 29"
0 Turns	47	47	48	53
1 Turn	44	44	45	50
2 Turns	42	42	43	47
3 Turns	40	40	40	43
4 Turns	37	37	38	42
5 Turns	35	35	36	40
6 Turns	32	32	33	35
7 Turns	29	30	31	34
8 Turns	27	28	29	32
9 Turns	Too Loose			

IMPORTANT PRESS INFORMATION

Due to the innovative and advanced design of your Cajun Bowfishing bow limbs, it is of the utmost importance that your bow **ONLY BE PRESSED IN PROPER BOW PRESSES**.

Traditional style presses that use rollers to apply pressure only to the mid section of the limbs **CANNOT BE USED**. Only presses that are capable of applying pressure to the last 2" of the limbs should be utilized, as illustrated below



APPROVED BOW PRESSES

For the most up to date and accurate list, please visit your local Cajun Bowfishing dealer or www.beararcheryproducts.com

! WARNING Failure to adhere to this list of presses can result in immediate failure of the limbs, possible injury and void the manufacturer's warranty.

!SAFETY FIRST!

BEFORE using this equipment, read and follow these manufacturer's instructions carefully. If you have any questions, contact the manufacturer or a qualified dealer.

! WARNING Dry-firing a bow severely reduces the life expectancy of the bow and may cause immediate damage to the bow resulting in injury to yourself or others. Never dry-fire your bow! Never pull back and release the bowstring without an arrow attached to the string. Your bow is designed to transfer energy to a properly weighted arrow.

! WARNING Shooting underweight arrows has the same effect as dry- firing a bow and may cause serious injury. Use the proper arrow for you and your bow. If you are unsure about your arrow choice, contact your local Bear Archery dealer or an arrow manufacturer.

! WARNING Do not use wooden arrows. They are not designed for use with this compound bow and may cause serious injury. Use the proper arrow for you and your bow. If you are unsure about your arrow choice, contact your archery dealer or an arrow manufacturer.

! WARNING Inspect your arrows and nocks regularly. Immediately discard any dented, split, splintered or otherwise damaged arrows and replace cracked or broken nocks.

! WARNING Do not draw your bow beyond its maximum draw length as damage to the limbs, cables and strings could occur.

! WARNING The use of safety glasses is recommended with any archery product.

CARE AND MAINTENANCE

With proper care and a minimum amount of routine maintenance, your bow will be kept in top condition. However, it is still important to carefully inspect your bow on a regular basis.

CLEANING

Your bow should be kept clean of dust, mud and grime. Use a damp soft cotton cloth to remove dirt and moisture. Do not use solvents such as acetone or mineral spirits as they may ruin the finish.

STORAGE AND TRANSPORTATION

Avoid exposing your bow to temperatures over 150 degrees. Excessive heat may damage your bow. Do not leave your bow unprotected in your vehicle on a hot sunny day or store in a hot attic or other hot enclosed area. Clean your bow thoroughly after each use. Never put your bow away wet or store it in a damp place. Lightly oil all steel parts (axles, mounting screws) to prevent rust. You can relax the limbs if storing for more than a year. Follow the instructions under Peak Draw Weight Adjustment in the bow adjustment section.

BOW PRESSES

Use only “double-pull” type APPROVED bow presses. A “double-pull” bow press draws your bow down at two points on the riser.

Older style “single-pull” bow presses that contact the bow only in the grip area can result in bent or broken risers. To reduce unnecessary stress on the riser, back off the limb bolts 2-3 turns before placing in a press.

LUBRICATION

Your Bear Archery compound bow requires very little lubrication.

Wipe the cable guard periodically with a dry cloth to keep the cable slide running smoothly and free of dust. Cam and idler wheel bearings do not require lubrication. If other lubrication is necessary, use white lithium grease or Teflon™ lubricants. Avoid excessive lubrication of any item, as this can attract dirt. On hunting bows, avoid lubricants with obvious odors.

STRING AND SYNTHETIC CABLE MAINTENANCE

Regularly apply a high quality bowstring wax to your string and synthetic cable system. Regular waxing protects your cables and strings from abrasion, wear and separation. Smear the wax into position. Then, rub it gently with your fingers or a soft piece of leather to work the wax into the strands. Replace frayed or worn bowstrings and cables immediately.

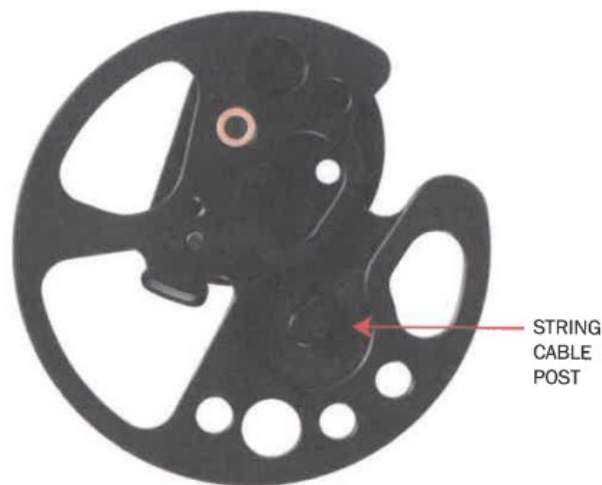
- Bear Archery strongly recommends replacing the bowstring and cable annually. Please visit your local Bear Archery dealer for assistance.

BOW ADJUSTMENTS

PEAK DRAW WEIGHT ADJUSTMENT

Using a 3/16” hex wrench, turn the limb bolts clockwise to increase peak weight and counter-clockwise to reduce peak weight. Bow weight will increase or decrease approximately two to four pounds per turn. IMPORTANT Both limb bolts must be adjusted equally. Likewise, do not turn one limb bolt more than two turns ahead of the other when making adjustments. Finally, limb bolts must never be backed out more than 10 turns. Constant draw 17 to 28 inch.

SHORERUNNVER – CONSTANT DRAW MODULE



INITIAL BOW SETUP

Before you can safely and effectively shoot your bow; a number of specific initial bow setup steps must be taken. These steps can be performed on your own, if your level of expertise is adequate. Or, your local Bear Archery dealer can help you.

ARROW REST INSTALLATION & SETUP

Arrow rests should be installed according to the manufacturer's specifications. The first adjustment you need to perform is setting the vertical height of your arrow rest. When properly adjusted, your arrow rest should align the centerline of the arrow with the center of the two holes used to mount the rest to the riser. To check this, place an arrow in the rest and nocked on the string. Visually confirm the center of the arrow passes directly through the center of the arrow rest mounting holes when viewed from the side. If not, adjust your rest up or down to correct.

Next, the rest should be adjusted for proper "Centershot". With an arrow in the rest and nocked on the string, firmly hold another arrow against the inside of the riser near the arrow rest mounting holes as illustrated. Look down the arrows and verify that the arrows are parallel to each other. In other words, the spacing between the two arrows should be the same along the entire length of the arrows. If not, adjust your rest side to side to correct. This is only your "initial" centershot and additional fine tuning may be required depending on your shooting style and equipment. Please refer to the images on the next page for further reference.



- Place arrow firmly against inside of riser rise as shown above.
- Arrow rest should support the arrow in such a way that the arrow's centerline passes directly through the center of the two arrow rest holes.



NOCKING POINT AND NOCK ADJUSTMENT

Now that the initial centershot setting is complete, you need to verify your arrow nocking point. Install the nocking point or string loop on the bowstring so that when an arrow is nocked it creates a 90 degree angle to the string. Another option is to use a process similar to the one used to determine centershot.

With an arrow in the rest and nocked on the string, firmly hold another arrow against the shelf of the riser as illustrated. Look down the arrows and verify that the arrows are parallel. In other words, the spacing between the two arrows should be the same along the entire length of the arrows. If not, adjust your nocking point up or down to correct.

At this time, adjust arrow fletch position to correspond with the arrow rest you are using. Such adjustments are done by simply rotating or replacing the arrow's nock. Carefully position the nock to provide proper fletch clearance through the arrow rest.

Your local Bear Archery dealer can show you how to do this or can provide the service for you. Please refer to the

images on the next page for further reference.

INSTALL ALL ACCESSORIES

After your arrow rest and nocking point are installed correctly you will need to install all other accessories such as sights, quivers, silencers, peep sights, stabilizers, etc. Before mounting ANY accessories to the limbs, Refer to page 1 for important limb information.

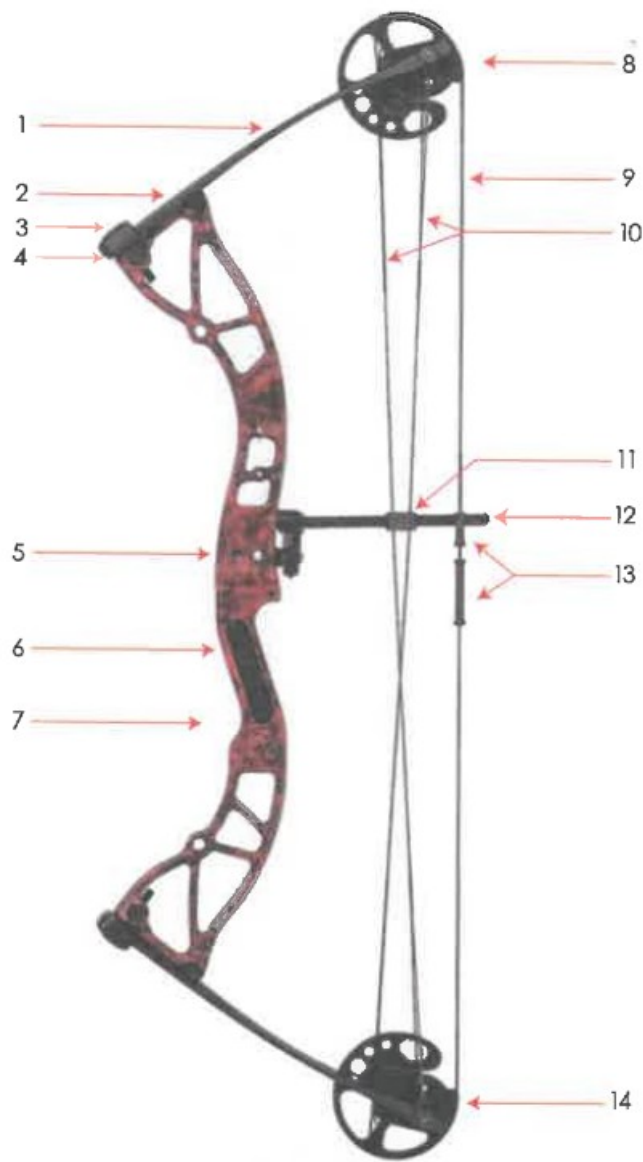
- Place arrow firmly against shelf of riser as shown.



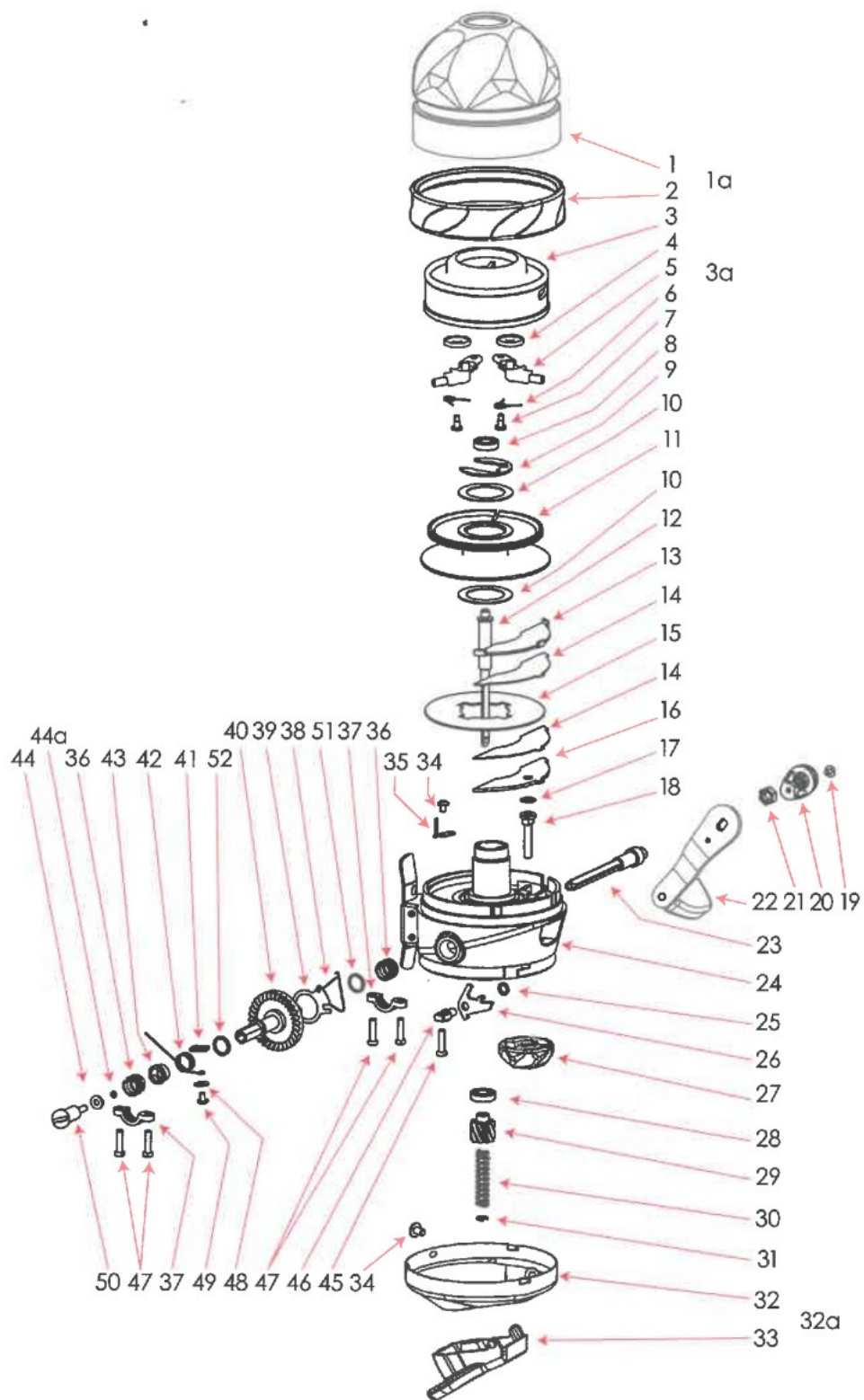
- Arrows should be parallel along their entire length.



SHORE RUNNER PART LIST



NUMBER	PART DESCRIPTION	NUMBER	PART DESCRIPTION
1	Limb	8	RH Top Constant Draw Cam
2	Limb Rocker	9	String
3	Limb Bolt	10	Cable
4	Pocket	11	Cable Slide
5	Riser	12	Cable Rod
6	Panel Grip	13	Blister Buster
7	Panel Grip Screw	14	RH Bottom Constant Draw Cam



NUMBER	PART DESCRIPTION	NUMBER	PART DESCRIPTION
1	Hood Assembly	27	Drag Dial
1a	Hood & Grip Assembly	28	Ball Bearing (7x14x3.5)
2	Hood Grip Ring	29	Pinion Gear
3	Rotor Assembly	30	Mainshaft Spring
3a	Rotor & Pin Carrier Assembly	31	Spring Retainer
4	Carrier Roller (x2)	32	Backcover
5	Pin Carrier Assembly	32a	Backcover Assembly
6	Carrier Spring (x2)	33	Push Button
7	Carrier Screw (x2)	34	Retainer Screw
8	Ball Bearing (6.5x13x3.5)	35	Clicker
9	Spool Clip	36	Main Gear Bushing (x2)
10	Spool Washer	37	Bushing Retainer (x2)
11	Spool Assembly	38	A/R Friction Spring
12	Main Shaft	39	A/R Retainer Plate
13	Front Caliper	40	Main Gear
14	Friction Pad (x2)	41	Coil Anchor Plate
15	Drag Disk	42	Cushion Coil
16	Back Caliper	43	Coil Bushing
17	Drag Spring	44	Handle Scerw Washer
18	Drag Plunger	44a	O-rings
19	Handle nutcover screw	45	A/R Pawl Post Screw
20	Handle Nutcover	46	A/R Pawl Post
21	Handle Nut	47	Bushing Retainer Screw (x4)
22	Handle Assembly	48	Coil Screwwasher
23	Handle Shaft Assembly	49	Coil Screw
24	Main Body Assembly	50	Handle Screw
25	Pawl Shim	51	Main Gear Shim
26	A/R Pawl	52	Coil Bushing Shim

SPIN DOCTOR REEL INSTALLATION

INSTALLATION OF REEL ON COMPOUND BOWS

1. Attach spincast reel seat to front stabilizer bushing on bow.



2. Place reel foot inside of the reel seat and tighten down the rings until there is no more movement from the reel.

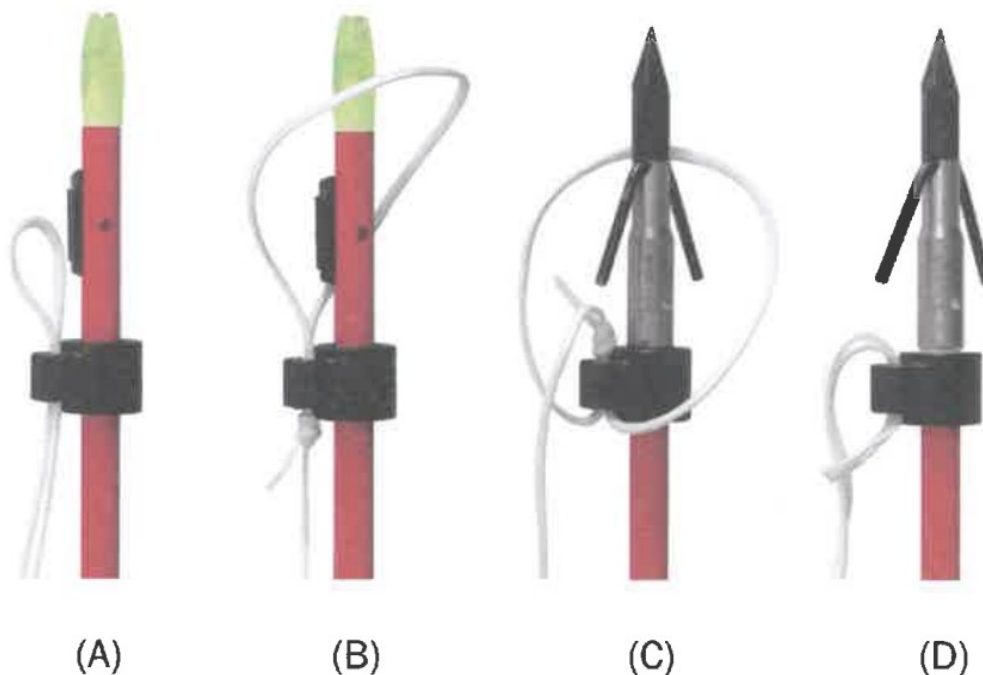


ARROW SLIDE

1. Install ACS Slide over the nock if possible. If not, remove the nock and replace when finished. Ensure that the wide flat part of the slide faces rearward so that it impacts the pad.
2. Install the arrow stop and ironclad pad protector using the stainless steel mounting screw. Place the pad on the arrow shaft followed by the ironclad pad protector ensuring the holes are aligned. Secure using the stainless screw.

DO NOT OVER TIGHTEN!

3. (A) Attach the slide to the string by threading the line through the back of the slide, over the top, then back out the opposite hole on the back of the slide. (B)(C)(D) Tie an overhand knot 4" from the slide passing the entire arrow through the loop starting with the point.



SHOOTING INSTRUCTIONS

Arrow snap back is a serious safety concern for bow fishermen.

Arrow snap back occurs when the bowfishing line becomes tangled around a part of the bow preventing the arrow from leaving the bow. The ACS slide system from Cajun, if used properly, helps to eliminate this concern by keeping the string in front of the arrow rest and bow at all times, greatly reducing the chances of the string becoming tangled.

1. It is recommended before each use to wet your line by throwing your arrow into the water to wet it, and remove any tangles. This will help prolong the life of your line.
2. With the slide stop pad facing upward, nock an arrow. The slide stop should always face upward to prevent interference with the arrow rest.
3. Make sure that your slide is in front of your arrow rest, and that any excessive line is reeled in. Do not use an arrow rest that could allow the slide to pass over the rest.
4. The reel will remain in the closed position to prevent excess string from falling out of the reel. Cock the reel trigger, and you are now ready to start fishing.
5. After a shot, simply turn the handle to retrieve the line.
6. Adjust the drag on the reel as necessary to prevent the fish from pulling excess line from the reel while fighting. Turn the drag dial counter clockwise to increase drag. Turn clockwise to decrease the drag.

LINE CARE AND MAINTENANCE

1. Prior to shooting and fishing, it is recommended that the line be wet. Cock the reel trigger and toss the entire line into the water. Slowly reel in the line allowing the line to untwist.
2. Check line regularly for snags and/or fraying and replace as needed. It is recommended that only Cajun Replacement Line be used in the Spin Doctor Reel.

RH/LH REEL CONVERSION

Spin cast reel can be converted from RH to LH retrieve with the following steps:

1. Remove the handle screw, on the opposite side of reel from the handle, with a flat head screw driver.
2. Pull out handle assembly from the reel housing.
3. Reinstall handle assembly to opposite side of the reel housing ensuring the assembly is fully seated.
4. Reinstall the handle screw hand tight with flathead screwdriver.
5. Check to make sure handle is seated properly by spinning the reel a couple times.

CAJUN BOWFISHING BOW WARRANTY STATEMENT

All Cajun Bowfishing compound bows are backed with a Limited Lifetime Warranty to the original owner. This warranty applies to limbs, risers, and cams. This warranty consists of the following programs:

Limbs: 100% covered at no charge for the first 5 years, 50% of replacement cost after.

- Risers: Lifetime Warranty
- Cams: Lifetime Warranty

ORIGINAL OWNER

Warranty applies only to the original owner and is not transferable. Proof of purchase may be required.

ITEMS NOT COVERED

Cables, strings, bearings, paint and/or film dipped finishes resulting from normal wear and tear are not included in this warranty.

DAMAGE NOT COVERED

Damage caused by abuse, mishandling, dry firing, alteration or modification made to original products are not covered under this warranty. The use of any bow press other than those approved by Cajun Bowfishing will void this warranty.

Additionally, shooting of arrows less than 5 grains per pound of peak draw weight will void this warranty. Cajun Bowfishing reserves the right to make parts substitutions on warranty coverage at Cajun Bowfishing's sole discretion, for any reason.

BOW WARRANTY REGISTRATION

For this warranty to be In effect, the on-line warranty registration process must be completed at www.cajunbowfishing.com and submitted within 30 days of purchase.

In the event a bow requires warranty service, please contact the Cajun Bowfishing Customer Department at 800-694- 9494 for a return authorization (RA) number and return shipping instructions. For full warranty details, please log on to cajunbowfishign.com for further Information.

Key Contact data Dealer 800 Number: SOQ-694-9494

Dealer Fax Number: 812-467-1245

www.CajunBowfishIng.com

@2019 Cajun BowfishIng

CAJUN WARRANTY

Cajun Archery provides a Limited Lifetime Warranty on its products. All products are covered against breakage due to defects in materials, and workmanship from the date of purchase. Abuse or alteration of the product voids the warranty.

In the event of breakage due to defects in materials or workmanship the liability of Cajun Archery shall be limited to the lesser of the cost of repairing, or replacing the broken part. In any event, the cost shall never exceed the original retail price of the product. Failure to follow all recommended installation instruction of any Cajun Archery

product may void this warranty.

ORIGINAL OWNER

Warranty applies only to the original owner, and is not transferable.

DAMAGE NOT COVERED

Although Cajun Archery warrants all products are free from defects in materials or manufacturing, Cajun Archery is not responsible for personal / property harm to you, any equipment, or others due to misuse, misapplication, improper installation, or any other form of misuse or abuse of a Cajun Archery product. It is strongly recommended that any installation of any Cajun Archery product is done by an experienced, qualified, and competent Pro Shop for the safety of you and your equipment. In the event an item requires warranty service, please contact Cajun Archery Customer Relations department at 1-800-694-9494 for a return authorization (RA) number and return shipping instructions. For full warranty details, please log on to www.cajunbowfishing.com for further information.

Key Contact Data:

Dealer toll free Number: 1-800-694-9494


Dealer Fax Number: 1-812-467-1245

www.cajunbowfishing.com



Cajun Bowfishing
Owner's Manual

Documents / Resources

 <p>OWNER'S MANUAL</p> <p>4500 Sq. Ft. Dehumidifier • Cincinnati, OH 45208 P 900-694-9494 • F 812-467-1245 cajunbowfishing.com</p>	<p>BLACK DECKER BD50MWSA 4500 Sq. Ft. Dehumidifier for Large Spaces and Basements</p> <p>[pdf] Owner's Manual</p> <p>BD50MWSA 4500 Sq. Ft. Dehumidifier for Large Spaces and Basements, BD50MWSA, 4500 S q. Ft. Dehumidifier for Large Spaces and Basements, Dehumidifier for Large Spaces and Base ments, Large Spaces and Basements, Spaces and Basements, Basements</p>
---	--

References

- [User Manual](#)